

Location:	COLORADO	Slot:	SLOT#05 NORTH PLATTE 21-24-28HNC (1424'FSL & 1463'FWL, SEC.21)
Field:	WELD COUNTY	Well:	NORTH PLATTE 21-24-28HNC
Facility:	SEC.21-T05N-R63W	Wellbore:	NORTH PLATTE 21-24-28HNC PWB

Plot reference wellpath is NORTH PLATTE 21-24-28HNC PWP (REV-C.0)	Grid System: NAD83 / Lambert Colorado SP, Northern Zone (501), US feet
True vertical depths are referenced to RIG (17KB) (RKB)	* = Wellpath was transformed from a different geoidic datum
Measured depths are referenced to RIG (17KB) (RKB)	North Reference: True north
RIG (17KB) (RKB) to Mean Sea Level: 4570 feet	Scale: True distance
Mean Sea Level to Ground level (At Slot: SLOTH05 NORTH PLATTE 21-24-28HNC (1424FSL & 1463FWL, SEC.21)): 0 feet	Depths are in feet
Coordinates are in feet referenced to Slot	Created by: ingnjahr on 2018-01-31
	Database: Denver

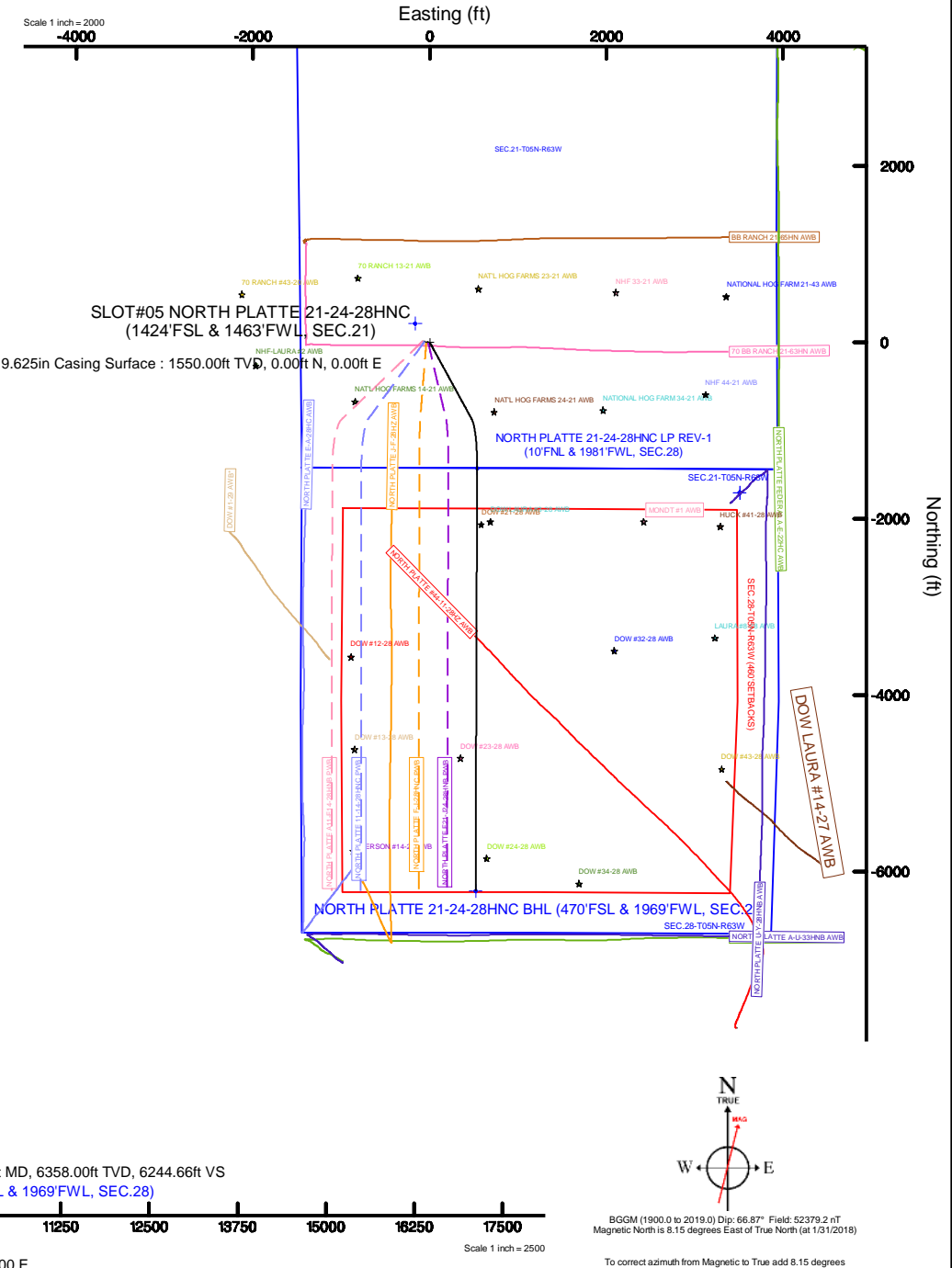
Facility Name			Grid East (US ft)	Grid North (US ft)	Latitude	Longitude
SEC.21-T00N-R63W			329662.591	1383831.667	40°22'56.021"N	104°26'45.049"W
Spot	Local N (ft)	Local E (ft)	Grid East (US ft)	Grid North (US ft)	Latitude	Longitude
SLOT#05 NORTH PLATTE 21-24-28HNC (1424FSL & 1463FWL, SEC.21)	-212.78	165.19	3293830.294	1383620.878	40°22'53.918"N	104°26'42.914"W
RIG (179KB) (R0KB) to Ground level (N Slot: SLOT#05 NORTH PLATTE 21-24-28HNC (1424FSL & 1463FWL, SEC.21))					4570R	
Mean Sea Level to Ground level (N Slot: SLOT#05 NORTH PLATTE 21-24-28HNC (1424FSL & 1463FWL, SEC.21))					0R	
RIG (179KB) (R0KB) to Mean Sea Level					4570R	

Design Comment	MD (ft)	Inc (°)	Az (°)	TVD (ft)	Local N (ft)	Local E (ft)	DLS (°/100ft)	VS (ft)
Tie On	17.00	0.000	151.375	17.00	0.00	0.00	0.00	0.00
End of Tangent	2200.00	0.000	151.375	2200.00	0.00	0.00	0.00	0.00
End of Build (XS)	3035.28	16.706	151.375	3023.49	-106.13	57.93	2.00	110.58
End of Tangent (XS)	6073.77	16.706	151.375	5933.75	-872.80	476.37	0.00	909.36
End of 3D Arc (XS)	6827.92	90.000	180.203	6358.00	-1427.51	535.80	10.00	1467.08
End of Tangent (XS)	11623.52	90.000	180.203	6358.00	-6223.08	518.77	0.00	6244.66

Name	Start MD (ft)	End MD (ft)	Interval (ft)	Start TVD (ft)	End TVD (ft)	Start Local N (ft)	Start Local E (ft)	End Local N (ft)	End Local E (ft)	Wellbore
9.625in Casing Surface	17.00	1550.00	1533.00	17.00	1550.00	0.00	0.00	0.00	0.00	NORTH PLATTE 21-24-28#NC PWB
8.5in Open Hole	1550.00	11623.52	10073.52	1550.00	N/A	0.00	0.00	N/A	N/A	NORTH PLATTE 21-24-28#NC PWB

Start MD (ft)	End MD (ft)	Tool	Model	Log Name/Comment	Wellbore
17.00	1550.00	BHI NavTrak	Custom BHI NavTrak (Standard Rotating+Areal Cor.) (Rockies 0.03G model)		NORTH PLATTE 21-24-28HNC PWB
1550.00	11623.52	BHI AutoTrak Curve	Custom BHI AutoTrak Curve (Areal Cor., Short spacing) (Rockies 0.01G model)		NORTH PLATTE 21-24-28HNC PWB

MD (ft)	Inc (°)	Az (°)	TVD (ft)	Local N (ft)	Local E (ft)	Grid East (US ft)	Grid North (US ft)	Latitude	Longitude
11623.52	90.000	180.203	6358.00	-6223.08	518.77	3294423.02	1377404.68	40°21'52.424"N	104°26'36.213"W





Planned Wellpath Report

NORTH PLATTE 21-24-28HNC PWP (REV-C.0)

Page 1 of 8



REFERENCE WELLPATH IDENTIFICATION

Operator	BONANZA CREEK OIL COMPANY	Slot	SLOT#05 NORTH PLATTE 21-24-28HNC (1424'FSL & 1463'FWL, SEC.21)
Area	COLORADO	Well	NORTH PLATTE 21-24-28HNC
Field	WELD COUNTY	Wellbore	NORTH PLATTE 21-24-28HNC PWB
Facility	SEC.21-T05N-R63W		

REPORT SETUP INFORMATION

Projection System	NAD83 / Lambert Colorado SP, Northern Zone (501), US feet	Software System	WellArchitect® 5.0
North Reference	True	User	Ingmjmr
Scale	0.999959	Report Generated	1/31/2018 at 3:28:30 PM
Convergence at slot	0.69° East	Database/Source file	Denver/NORTH_PLATTE_21-24-28HNC_PWP__REV-C.0_.xml

WELLPATH LOCATION

	Local coordinates		Grid coordinates		Geographic coordinates	
	North[ft]	East[ft]	Easting[US ft]	Northing[US ft]	Latitude	Longitude
Slot Location	-212.78	165.19	3293830.29	1383620.88	40°22'53.918"N	104°26'42.914"W
Facility Reference Pt			3293662.59	1383831.67	40°22'56.021"N	104°26'45.049"W
Field Reference Pt			3224525.77	1254425.87	40°01'44.400"N	104°41'53.556"W

WELLPATH DATUM

Calculation method	Minimum curvature	RIG (17'KB) (RKB) to Facility Vertical Datum	4570.00ft
Horizontal Reference Pt	Slot	RIG (17'KB) (RKB) to Mean Sea Level	4570.00ft
Vertical Reference Pt	RIG (17'KB) (RKB)	RIG (17'KB) (RKB) to Ground Level at Slot (SLOT#05 NORTH PLATTE 21-24-28HNC (1424'FSL & 1463'FWL, SEC.21))	4570.00ft
MD Reference Pt	RIG (17'KB) (RKB)	Section Origin	N 0.00, E 0.00 ft
Field Vertical Reference	Mean Sea Level	Section Azimuth	175.23°



Planned Wellpath Report

NORTH PLATTE 21-24-28HNC PWP (REV-C.0)

Page 2 of 8



REFERENCE WELLPATH IDENTIFICATION			
Operator	BONANZA CREEK OIL COMPANY	Slot	SLOT#05 NORTH PLATTE 21-24-28HNC (1424'FSL & 1463'FWL, SEC.21)
Area	COLORADO	Well	NORTH PLATTE 21-24-28HNC
Field	WELD COUNTY	Wellbore	NORTH PLATTE 21-24-28HNC PWB
Facility	SEC.21-T05N-R63W		

WELLPATH DATA (123 stations) † = interpolated/extrapolated station										
MD [ft]	Inclination [°]	Azimuth [°]	TVD [ft]	Vert Sect [ft]	North [ft]	East [ft]	Latitude	Longitude	DLS [°/100ft]	Comments
0.00†	0.000	151.375	0.00	0.00	0.00	0.00	40°22'53.918"N	104°26'42.914"W	0.00	
17.00	0.000	151.375	17.00	0.00	0.00	0.00	40°22'53.918"N	104°26'42.914"W	0.00	Tie On
117.00†	0.000	151.375	117.00	0.00	0.00	0.00	40°22'53.918"N	104°26'42.914"W	0.00	
217.00†	0.000	151.375	217.00	0.00	0.00	0.00	40°22'53.918"N	104°26'42.914"W	0.00	
317.00†	0.000	151.375	317.00	0.00	0.00	0.00	40°22'53.918"N	104°26'42.914"W	0.00	
417.00†	0.000	151.375	417.00	0.00	0.00	0.00	40°22'53.918"N	104°26'42.914"W	0.00	
517.00†	0.000	151.375	517.00	0.00	0.00	0.00	40°22'53.918"N	104°26'42.914"W	0.00	
617.00†	0.000	151.375	617.00	0.00	0.00	0.00	40°22'53.918"N	104°26'42.914"W	0.00	
717.00†	0.000	151.375	717.00	0.00	0.00	0.00	40°22'53.918"N	104°26'42.914"W	0.00	
817.00†	0.000	151.375	817.00	0.00	0.00	0.00	40°22'53.918"N	104°26'42.914"W	0.00	
917.00†	0.000	151.375	917.00	0.00	0.00	0.00	40°22'53.918"N	104°26'42.914"W	0.00	
1017.00†	0.000	151.375	1017.00	0.00	0.00	0.00	40°22'53.918"N	104°26'42.914"W	0.00	
1117.00†	0.000	151.375	1117.00	0.00	0.00	0.00	40°22'53.918"N	104°26'42.914"W	0.00	
1217.00†	0.000	151.375	1217.00	0.00	0.00	0.00	40°22'53.918"N	104°26'42.914"W	0.00	
1317.00†	0.000	151.375	1317.00	0.00	0.00	0.00	40°22'53.918"N	104°26'42.914"W	0.00	
1417.00†	0.000	151.375	1417.00	0.00	0.00	0.00	40°22'53.918"N	104°26'42.914"W	0.00	
1517.00†	0.000	151.375	1517.00	0.00	0.00	0.00	40°22'53.918"N	104°26'42.914"W	0.00	
1617.00†	0.000	151.375	1617.00	0.00	0.00	0.00	40°22'53.918"N	104°26'42.914"W	0.00	
1717.00†	0.000	151.375	1717.00	0.00	0.00	0.00	40°22'53.918"N	104°26'42.914"W	0.00	
1817.00†	0.000	151.375	1817.00	0.00	0.00	0.00	40°22'53.918"N	104°26'42.914"W	0.00	
1917.00†	0.000	151.375	1917.00	0.00	0.00	0.00	40°22'53.918"N	104°26'42.914"W	0.00	
2017.00†	0.000	151.375	2017.00	0.00	0.00	0.00	40°22'53.918"N	104°26'42.914"W	0.00	
2117.00†	0.000	151.375	2117.00	0.00	0.00	0.00	40°22'53.918"N	104°26'42.914"W	0.00	
2200.00	0.000	151.375	2200.00	0.00	0.00	0.00	40°22'53.918"N	104°26'42.914"W	0.00	End of Tangent
2217.00†	0.340	151.375	2217.00	0.05	-0.04	0.02	40°22'53.918"N	104°26'42.914"W	2.00	
2317.00†	2.340	151.375	2316.97	2.18	-2.10	1.14	40°22'53.898"N	104°26'42.900"W	2.00	
2417.00†	4.340	151.375	2416.79	7.51	-7.21	3.94	40°22'53.847"N	104°26'42.864"W	2.00	
2517.00†	6.340	151.375	2516.35	16.02	-15.38	8.39	40°22'53.766"N	104°26'42.806"W	2.00	
2617.00†	8.340	151.375	2615.53	27.71	-26.59	14.51	40°22'53.656"N	104°26'42.727"W	2.00	
2717.00†	10.340	151.375	2714.20	42.55	-40.84	22.29	40°22'53.515"N	104°26'42.626"W	2.00	



Planned Wellpath Report

NORTH PLATTE 21-24-28HNC PWP (REV-C.0)

Page 3 of 8



REFERENCE WELLPATH IDENTIFICATION			
Operator	BONANZA CREEK OIL COMPANY	Slot	SLOT#05 NORTH PLATTE 21-24-28HNC (1424'FSL & 1463'FWL, SEC.21)
Area	COLORADO	Well	NORTH PLATTE 21-24-28HNC
Field	WELD COUNTY	Wellbore	NORTH PLATTE 21-24-28HNC PWB
Facility	SEC.21-T05N-R63W		

WELLPATH DATA (123 stations) † = interpolated/extrapolated station

MD [ft]	Inclination [°]	Azimuth [°]	TVD [ft]	Vert Sect [ft]	North [ft]	East [ft]	Latitude	Longitude	DLS [°/100ft]	Comments
2817.00†	12.340	151.375	2812.24	60.53	-58.10	31.71	40°22'53.344"N	104°26'42.505"W	2.00	
2917.00†	14.340	151.375	2909.54	81.63	-78.35	42.76	40°22'53.144"N	104°26'42.362"W	2.00	
3017.00†	16.340	151.375	3005.97	105.82	-101.57	55.44	40°22'52.915"N	104°26'42.198"W	2.00	
3035.28	16.706	151.375	3023.49	110.58	-106.13	57.93	40°22'52.870"N	104°26'42.166"W	2.00	End of Build (XS)
3117.00†	16.706	151.375	3101.77	132.06	-126.75	69.18	40°22'52.666"N	104°26'42.020"W	0.00	
3217.00†	16.706	151.375	3197.55	158.35	-151.98	82.95	40°22'52.417"N	104°26'41.843"W	0.00	
3317.00†	16.706	151.375	3293.33	184.64	-177.21	96.72	40°22'52.167"N	104°26'41.665"W	0.00	
3417.00†	16.706	151.375	3389.10	210.93	-202.45	110.49	40°22'51.918"N	104°26'41.487"W	0.00	
3517.00†	16.706	151.375	3484.88	237.21	-227.68	124.27	40°22'51.669"N	104°26'41.309"W	0.00	
3617.00†	16.706	151.375	3580.66	263.50	-252.91	138.04	40°22'51.419"N	104°26'41.131"W	0.00	
3717.00†	16.706	151.375	3676.44	289.79	-278.14	151.81	40°22'51.170"N	104°26'40.953"W	0.00	
3817.00†	16.706	151.375	3772.22	316.08	-303.37	165.58	40°22'50.921"N	104°26'40.775"W	0.00	
3917.00†	16.706	151.375	3868.00	342.37	-328.61	179.35	40°22'50.671"N	104°26'40.597"W	0.00	
4017.00†	16.706	151.375	3963.78	368.66	-353.84	193.12	40°22'50.422"N	104°26'40.419"W	0.00	
4117.00†	16.706	151.375	4059.56	394.95	-379.07	206.89	40°22'50.173"N	104°26'40.241"W	0.00	
4217.00†	16.706	151.375	4155.34	421.23	-404.30	220.67	40°22'49.923"N	104°26'40.063"W	0.00	
4317.00†	16.706	151.375	4251.12	447.52	-429.53	234.44	40°22'49.674"N	104°26'39.885"W	0.00	
4417.00†	16.706	151.375	4346.90	473.81	-454.76	248.21	40°22'49.425"N	104°26'39.707"W	0.00	
4517.00†	16.706	151.375	4442.68	500.10	-480.00	261.98	40°22'49.175"N	104°26'39.529"W	0.00	
4617.00†	16.706	151.375	4538.46	526.39	-505.23	275.75	40°22'48.926"N	104°26'39.351"W	0.00	
4717.00†	16.706	151.375	4634.24	552.68	-530.46	289.52	40°22'48.677"N	104°26'39.173"W	0.00	
4817.00†	16.706	151.375	4730.02	578.97	-555.69	303.29	40°22'48.427"N	104°26'38.995"W	0.00	
4917.00†	16.706	151.375	4825.80	605.26	-580.92	317.07	40°22'48.178"N	104°26'38.817"W	0.00	
5017.00†	16.706	151.375	4921.58	631.54	-606.16	330.84	40°22'47.929"N	104°26'38.639"W	0.00	
5117.00†	16.706	151.375	5017.36	657.83	-631.39	344.61	40°22'47.679"N	104°26'38.462"W	0.00	
5217.00†	16.706	151.375	5113.13	684.12	-656.62	358.38	40°22'47.430"N	104°26'38.284"W	0.00	
5317.00†	16.706	151.375	5208.91	710.41	-681.85	372.15	40°22'47.181"N	104°26'38.106"W	0.00	
5417.00†	16.706	151.375	5304.69	736.70	-707.08	385.92	40°22'46.931"N	104°26'37.928"W	0.00	
5517.00†	16.706	151.375	5400.47	762.99	-732.31	399.69	40°22'46.682"N	104°26'37.750"W	0.00	
5617.00†	16.706	151.375	5496.25	789.28	-757.55	413.46	40°22'46.433"N	104°26'37.572"W	0.00	



Planned Wellpath Report

NORTH PLATTE 21-24-28HNC PWP (REV-C.0)

Page 4 of 8



REFERENCE WELLPATH IDENTIFICATION			
Operator	BONANZA CREEK OIL COMPANY	Slot	SLOT#05 NORTH PLATTE 21-24-28HNC (1424'FSL & 1463'FWL, SEC.21)
Area	COLORADO	Well	NORTH PLATTE 21-24-28HNC
Field	WELD COUNTY	Wellbore	NORTH PLATTE 21-24-28HNC PWB
Facility	SEC.21-T05N-R63W		

WELLPATH DATA (123 stations) † = interpolated/extrapolated station										
MD [ft]	Inclination [°]	Azimuth [°]	TVD [ft]	Vert Sect [ft]	North [ft]	East [ft]	Latitude	Longitude	DLS [°/100ft]	Comments
5717.00†	16.706	151.375	5592.03	815.56	-782.78	427.24	40°22'46.183"N	104°26'37.394"W	0.00	
5817.00†	16.706	151.375	5687.81	841.85	-808.01	441.01	40°22'45.934"N	104°26'37.216"W	0.00	
5917.00†	16.706	151.375	5783.59	868.14	-833.24	454.78	40°22'45.685"N	104°26'37.038"W	0.00	
6017.00†	16.706	151.375	5879.37	894.43	-858.47	468.55	40°22'45.435"N	104°26'36.860"W	0.00	
6073.77	16.706	151.375	5933.75	909.36	-872.80	476.37	40°22'45.294"N	104°26'36.759"W	0.00	End of Tangent (XS)
6117.00†	20.563	157.512	5974.70	922.27	-885.27	482.25	40°22'45.170"N	104°26'36.683"W	10.00	
6217.00†	29.961	165.663	6065.07	963.73	-925.79	495.19	40°22'44.770"N	104°26'36.516"W	10.00	
6317.00†	39.634	170.141	6147.10	1020.27	-981.55	506.86	40°22'44.219"N	104°26'36.365"W	10.00	
6417.00†	49.421	173.084	6218.31	1090.16	-1050.85	516.92	40°22'43.534"N	104°26'36.235"W	10.00	
6517.00†	59.264	175.267	6276.54	1171.29	-1131.59	525.06	40°22'42.736"N	104°26'36.130"W	10.00	
6617.00†	69.136	177.042	6320.01	1261.20	-1221.30	531.03	40°22'41.850"N	104°26'36.053"W	10.00	
6717.00†	79.024	178.595	6347.41	1357.14	-1317.28	534.65	40°22'40.901"N	104°26'36.006"W	10.00	
6817.00†	88.920	180.047	6357.90	1456.21	-1416.59	535.82	40°22'39.920"N	104°26'35.991"W	10.00	
6827.92	90.000	180.203	6358.00†	1467.08	-1427.51	535.80	40°22'39.812"N	104°26'35.991"W	10.00	End of 3D Arc (XS)
6917.00†	90.000	180.203	6358.00	1555.83	-1516.59	535.48	40°22'38.932"N	104°26'35.995"W	0.00	
7017.00†	90.000	180.203	6358.00	1655.45	-1616.59	535.12	40°22'37.944"N	104°26'36.000"W	0.00	
7117.00†	90.000	180.203	6358.00	1755.08	-1716.59	534.77	40°22'36.956"N	104°26'36.005"W	0.00	
7217.00†	90.000	180.203	6358.00	1854.70	-1816.59	534.41	40°22'35.967"N	104°26'36.009"W	0.00	
7317.00†	90.000	180.203	6358.00	1954.33	-1916.59	534.06	40°22'34.979"N	104°26'36.014"W	0.00	
7417.00†	90.000	180.203	6358.00	2053.95	-2016.59	533.70	40°22'33.991"N	104°26'36.019"W	0.00	
7517.00†	90.000	180.203	6358.00	2153.58	-2116.58	533.35	40°22'33.003"N	104°26'36.023"W	0.00	
7617.00†	90.000	180.203	6358.00	2253.20	-2216.58	532.99	40°22'32.015"N	104°26'36.028"W	0.00	
7717.00†	90.000	180.203	6358.00	2352.82	-2316.58	532.64	40°22'31.027"N	104°26'36.032"W	0.00	
7817.00†	90.000	180.203	6358.00	2452.45	-2416.58	532.28	40°22'30.038"N	104°26'36.037"W	0.00	
7917.00†	90.000	180.203	6358.00	2552.07	-2516.58	531.93	40°22'29.050"N	104°26'36.042"W	0.00	
8017.00†	90.000	180.203	6358.00	2651.70	-2616.58	531.57	40°22'28.062"N	104°26'36.046"W	0.00	
8117.00†	90.000	180.203	6358.00	2751.32	-2716.58	531.22	40°22'27.074"N	104°26'36.051"W	0.00	
8217.00†	90.000	180.203	6358.00	2850.95	-2816.58	530.86	40°22'26.086"N	104°26'36.055"W	0.00	
8317.00†	90.000	180.203	6358.00	2950.57	-2916.58	530.51	40°22'25.098"N	104°26'36.060"W	0.00	
8417.00†	90.000	180.203	6358.00	3050.19	-3016.58	530.15	40°22'24.109"N	104°26'36.065"W	0.00	



Planned Wellpath Report

NORTH PLATTE 21-24-28HNC PWP (REV-C.0)

Page 5 of 8



REFERENCE WELLPATH IDENTIFICATION			
Operator	BONANZA CREEK OIL COMPANY	Slot	SLOT#05 NORTH PLATTE 21-24-28HNC (1424'FSL & 1463'FWL, SEC.21)
Area	COLORADO	Well	NORTH PLATTE 21-24-28HNC
Field	WELD COUNTY	Wellbore	NORTH PLATTE 21-24-28HNC PWB
Facility	SEC.21-T05N-R63W		

WELLPATH DATA (123 stations) † = interpolated/extrapolated station										
MD [ft]	Inclination [°]	Azimuth [°]	TVD [ft]	Vert Sect [ft]	North [ft]	East [ft]	Latitude	Longitude	DLS [°/100ft]	Comments
8517.00†	90.000	180.203	6358.00	3149.82	-3116.58	529.80	40°22'23.121"N	104°26'36.069"W	0.00	
8617.00†	90.000	180.203	6358.00	3249.44	-3216.58	529.44	40°22'22.133"N	104°26'36.074"W	0.00	
8717.00†	90.000	180.203	6358.00	3349.07	-3316.58	529.09	40°22'21.145"N	104°26'36.079"W	0.00	
8817.00†	90.000	180.203	6358.00	3448.69	-3416.58	528.73	40°22'20.157"N	104°26'36.083"W	0.00	
8917.00†	90.000	180.203	6358.00	3548.31	-3516.58	528.38	40°22'19.169"N	104°26'36.088"W	0.00	
9017.00†	90.000	180.203	6358.00	3647.94	-3616.58	528.02	40°22'18.181"N	104°26'36.092"W	0.00	
9117.00†	90.000	180.203	6358.00	3747.56	-3716.57	527.67	40°22'17.192"N	104°26'36.097"W	0.00	
9217.00†	90.000	180.203	6358.00	3847.19	-3816.57	527.31	40°22'16.204"N	104°26'36.102"W	0.00	
9317.00†	90.000	180.203	6358.00	3946.81	-3916.57	526.96	40°22'15.216"N	104°26'36.106"W	0.00	
9417.00†	90.000	180.203	6358.00	4046.44	-4016.57	526.60	40°22'14.228"N	104°26'36.111"W	0.00	
9517.00†	90.000	180.203	6358.00	4146.06	-4116.57	526.25	40°22'13.240"N	104°26'36.115"W	0.00	
9617.00†	90.000	180.203	6358.00	4245.68	-4216.57	525.89	40°22'12.252"N	104°26'36.120"W	0.00	
9717.00†	90.000	180.203	6358.00	4345.31	-4316.57	525.54	40°22'11.263"N	104°26'36.125"W	0.00	
9817.00†	90.000	180.203	6358.00	4444.93	-4416.57	525.18	40°22'10.275"N	104°26'36.129"W	0.00	
9917.00†	90.000	180.203	6358.00	4544.56	-4516.57	524.83	40°22'09.287"N	104°26'36.134"W	0.00	
10017.00†	90.000	180.203	6358.00	4644.18	-4616.57	524.47	40°22'08.299"N	104°26'36.139"W	0.00	
10117.00†	90.000	180.203	6358.00	4743.81	-4716.57	524.12	40°22'07.311"N	104°26'36.143"W	0.00	
10217.00†	90.000	180.203	6358.00	4843.43	-4816.57	523.76	40°22'06.323"N	104°26'36.148"W	0.00	
10317.00†	90.000	180.203	6358.00	4943.05	-4916.57	523.41	40°22'05.334"N	104°26'36.152"W	0.00	
10417.00†	90.000	180.203	6358.00	5042.68	-5016.57	523.05	40°22'04.346"N	104°26'36.157"W	0.00	
10517.00†	90.000	180.203	6358.00	5142.30	-5116.57	522.70	40°22'03.358"N	104°26'36.162"W	0.00	
10617.00†	90.000	180.203	6358.00	5241.93	-5216.56	522.34	40°22'02.370"N	104°26'36.166"W	0.00	
10717.00†	90.000	180.203	6358.00	5341.55	-5316.56	521.98	40°22'01.382"N	104°26'36.171"W	0.00	
10817.00†	90.000	180.203	6358.00	5441.17	-5416.56	521.63	40°22'00.394"N	104°26'36.175"W	0.00	
10917.00†	90.000	180.203	6358.00	5540.80	-5516.56	521.27	40°21'59.405"N	104°26'36.180"W	0.00	
11017.00†	90.000	180.203	6358.00	5640.42	-5616.56	520.92	40°21'58.417"N	104°26'36.185"W	0.00	
11117.00†	90.000	180.203	6358.00	5740.05	-5716.56	520.56	40°21'57.429"N	104°26'36.189"W	0.00	
11217.00†	90.000	180.203	6358.00	5839.67	-5816.56	520.21	40°21'56.441"N	104°26'36.194"W	0.00	
11317.00†	90.000	180.203	6358.00	5939.30	-5916.56	519.85	40°21'55.453"N	104°26'36.199"W	0.00	
11417.00†	90.000	180.203	6358.00	6038.92	-6016.56	519.50	40°21'54.465"N	104°26'36.203"W	0.00	



Planned Wellpath Report

NORTH PLATTE 21-24-28HNC PWP (REV-C.0)

Page 6 of 8



REFERENCE WELLPATH IDENTIFICATION			
Operator	BONANZA CREEK OIL COMPANY	Slot	SLOT#05 NORTH PLATTE 21-24-28HNC (1424'FSL & 1463'FWL, SEC.21)
Area	COLORADO	Well	NORTH PLATTE 21-24-28HNC
Field	WELD COUNTY	Wellbore	NORTH PLATTE 21-24-28HNC PWB
Facility	SEC.21-T05N-R63W		

WELLPATH DATA (123 stations) † = interpolated/extrapolated station										
MD [ft]	Inclination [°]	Azimuth [°]	TVD [ft]	Vert Sect [ft]	North [ft]	East [ft]	Latitude	Longitude	DLS [°/100ft]	Comments
11517.00†	90.000	180.203	6358.00	6138.54	-6116.56	519.14	40°21'53.476"N	104°26'36.208"W	0.00	
11617.00†	90.000	180.203	6358.00	6238.17	-6216.56	518.79	40°21'52.488"N	104°26'36.212"W	0.00	
11623.52	90.000	180.203	6358.00 ²	6244.66	-6223.08	518.77	40°21'52.424"N	104°26'36.213"W	0.00	End of Tangent (XS)

HOLE & CASING SECTIONS - Ref Wellbore: NORTH PLATTE 21-24-28HNC PWB Ref Wellpath: NORTH PLATTE 21-24-28HNC PWP (REV-C.0)									
String/Diameter	Start MD [ft]	End MD [ft]	Interval [ft]	Start TVD [ft]	End TVD [ft]	Start N/S [ft]	Start E/W [ft]	End N/S [ft]	End E/W [ft]
9.625in Casing Surface	17.00	1550.00	1533.00	17.00	1550.00	0.00	0.00	0.00	0.00
8.5in Open Hole	1550.00	11623.52	10073.52	1550.00	N/A	0.00	0.00	N/A	N/A



Planned Wellpath Report

NORTH PLATTE 21-24-28HNC PWP (REV-C.0)

Page 7 of 8



REFERENCE WELLPATH IDENTIFICATION			
Operator	BONANZA CREEK OIL COMPANY	Slot	SLOT#05 NORTH PLATTE 21-24-28HNC (1424'FSL & 1463'FWL, SEC.21)
Area	COLORADO	Well	NORTH PLATTE 21-24-28HNC
Field	WELD COUNTY	Wellbore	NORTH PLATTE 21-24-28HNC PWB
Facility	SEC.21-T05N-R63W		

TARGETS									
Name	MD [ft]	TVD [ft]	North [ft]	East [ft]	Grid East [US ft]	Grid North [US ft]	Latitude	Longitude	Shape
SEC.21-T05N-R63W		-8.00	212.78	-165.19	3293662.59	1383831.67	40°22'56.021"N	104°26'45.049"W	polygon
SEC.28-T05N-R63W		-8.00	-1706.89	3508.59	3297358.79	1381955.91	40°22'37.049"N	104°25'57.580"W	polygon
2) NORTH PLATTE 21-24-28HNC BHL (470'FSL & 1969'FWL, SEC.28)	11623.52	6358.00	-6223.08	518.77	3294423.02	1377404.68	40°21'52.424"N	104°26'36.213"W	point
NORTH PLATTE 21-24-28HNC LP (470'FNL & 1981'FWL, SEC.28)		6358.00	-1887.51	535.79	3294388.48	1381739.96	40°22'35.267"N	104°26'35.991"W	point
1) NORTH PLATTE 21-24-28HNC LP REV-1 (10'FNL & 1981'FWL, SEC.28)	6827.92	6358.00	-1427.51	535.80	3294383.01	1382199.91	40°22'39.812"N	104°26'35.991"W	point
SEC.28-T05N-R63W 460'SETBACKS		6425.00	-1706.89	3508.59	3297358.79	1381955.91	40°22'37.049"N	104°25'57.580"W	polygon

SURVEY PROGRAM - Ref Wellbore: NORTH PLATTE 21-24-28HNC PWB Ref Wellpath: NORTH PLATTE 21-24-28HNC PWP (REV-C.0)				
Start MD [ft]	End MD [ft]	Positional Uncertainty Model	Log Name/Comment	Wellbore
17.00	1550.00	Custom BHI NaviTrak (Standard Rotating+Axial Corr) (Rockies 0.03Gt model)		NORTH PLATTE 21-24-28HNC PWB
1550.00	11623.52	Custom BHI AutoTrak Curve (Axial Corr, Short spacing) (Rockies 0.03Gt model)		NORTH PLATTE 21-24-28HNC PWB



Planned Wellpath Report

NORTH PLATTE 21-24-28HNC PWP (REV-C.0)

Page 8 of 8



REFERENCE WELLPATH IDENTIFICATION			
Operator	BONANZA CREEK OIL COMPANY	Slot	SLOT#05 NORTH PLATTE 21-24-28HNC (1424'FSL & 1463'FWL, SEC.21)
Area	COLORADO	Well	NORTH PLATTE 21-24-28HNC
Field	WELD COUNTY	Wellbore	NORTH PLATTE 21-24-28HNC PWB
Facility	SEC.21-T05N-R63W		

DESIGN COMMENTS				
MD [ft]	Inclination [°]	Azimuth [°]	TVD [ft]	Comment
17.00	0.000	151.375	17.00	Tie On
2200.00	0.000	151.375	2200.00	End of Tangent
3035.28	16.706	151.375	3023.49	End of Build (XS)
6073.77	16.706	151.375	5933.75	End of Tangent (XS)
6827.92	90.000	180.203	6358.00	End of 3D Arc (XS)
11623.52	90.000	180.203	6358.00	End of Tangent (XS)