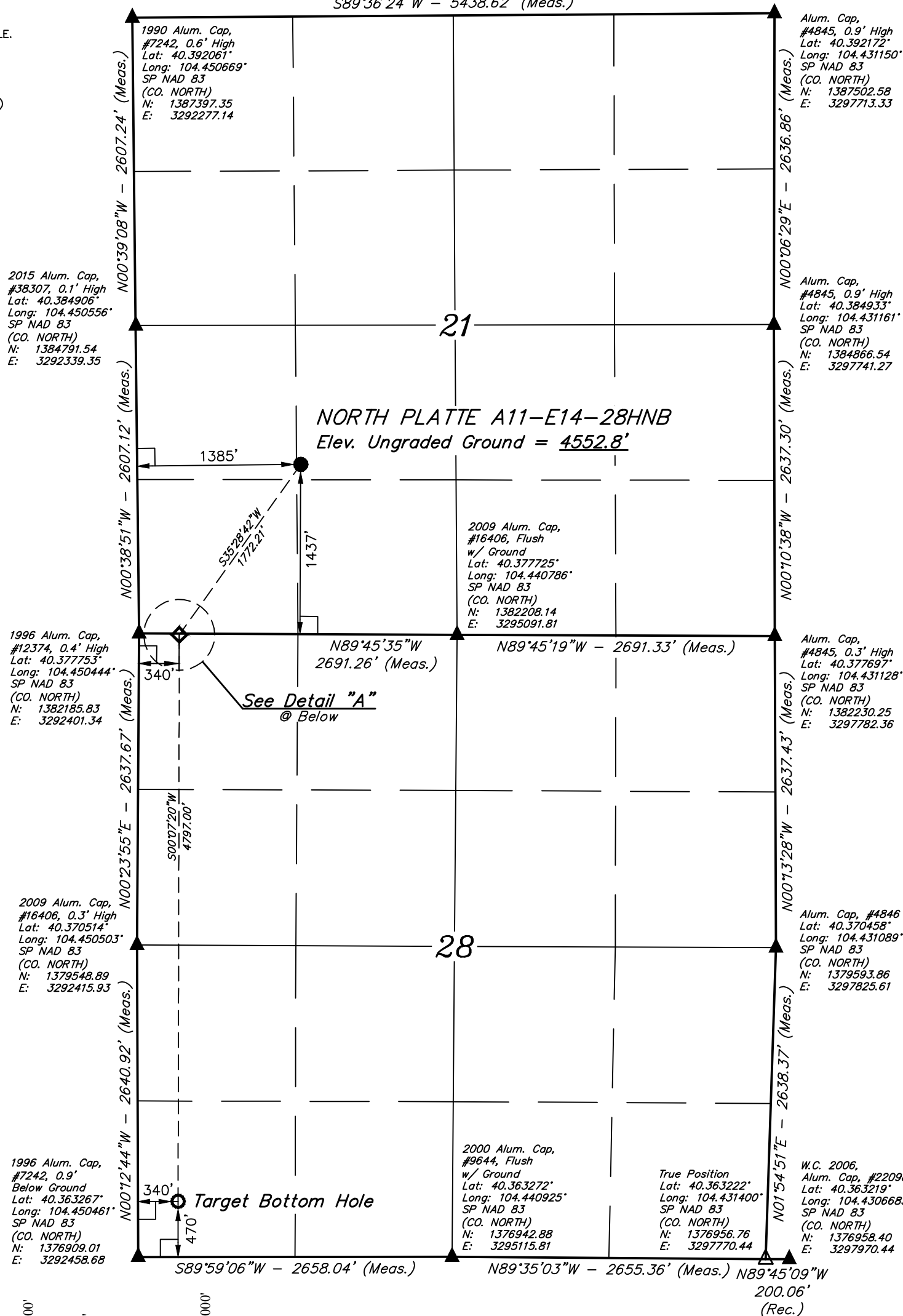


 = 90° SYMBOL
 = PROPOSED WELLHEAD.
 = ENTRY TARGET.
 = TARGET BOTTOM HOLE.
 = SECTION CORNERS LOCATED. (NAD 83)
 = SECTION CORNERS RE-ESTABLISHED. (Not Set on Ground.) (NAD 83)

S89°36'24"W - 5438.62' (Meas.)



NAD 83 (SURFACE LOCATION)
LATITUDE = 40°22'54.06" (40.381683)
LONGITUDE = 104°26'43.93" (104.445536)
STATE PLANE NAD 83 (CO. NORTH)
N: 1383634.18 E: 3293751.52
NAD 83 (ENTRY TARGET)
LATITUDE = 40°22'39.79" (40.377721)
LONGITUDE = 104°26'57.21" (104.449224)
STATE PLANE NAD 83 (CO. NORTH)
N: 1382178.65 E: 3292741.30
NAD 83 (TARGET BOTTOM HOLE)
LATITUDE = 40°21'52.40" (40.364556)
LONGITUDE = 104°26'57.30" (104.449250)
STATE PLANE NAD 83 (CO. NORTH)
N: 1377383.16 E: 3292790.96

BASIS OF BEARINGS
BASIS OF BEARINGS IS A G.P.S. OBSERVATION

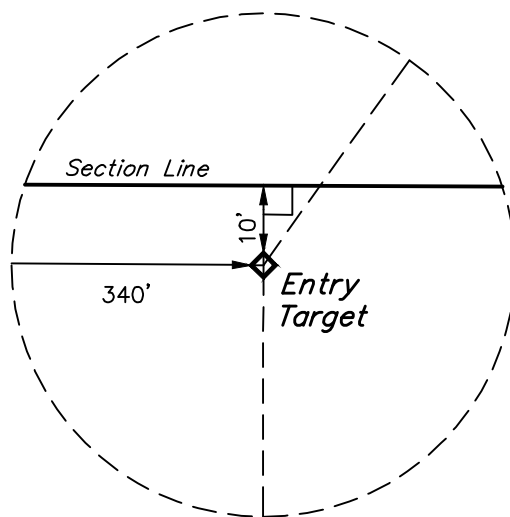
BASIS OF ELEVATION
USGS COOPERATIVE BASE NETWORK CONTROL STATION, DESIGNATION "M414". NGS DATA SHEET LISTS THE NAVD 88 ELEVATION AS BEING 4600.58 FEET.



UELS, LLC
Corporate Office * 85 South 200 East
Vernal, UT 84078 * (435) 789-1017



Detail "A"
No Scale



CERTIFICATE OF REGISTRATION
THE ABOVE PLAT WAS PREPARED FROM PLATS
MADE BY ME OR UNDER MY SUPERVISION
TRUE AND CORRECT TO THE BEST OF MY KNOWLEDGE

[Signature]
28285

REGISTERED LAND SURVEYOR
REGISTRATION NO. 28285
STATE OF COLORADO 02-02-18

REV: 2 01-29-18 D.J.W. (SURFACE MOVE & LATERAL CHANGE)

**BONANZA CREEK ENERGY
OPERATING COMPANY, LLC**

NORTH PLATTE A11-E14-28HNB
NE 1/4 SW 1/4, SECTION 21, T5N, R63W, 6th P.M.
WELD COUNTY, COLORADO

SURVEYED BY	CHAD MEIERS, O.R.	01-10-18	SCALE
DRAWN BY	M.F.D.	11-03-16	1" = 1000'

WELL LOCATION PLAT