



410 17th Street, Suite 1400
Denver, CO 80202
(720) 440-6100 phone
(720) 305-0804 fax

Bonanzacrk.com

March 14, 2018

State of Colorado
Oil and Gas Conservation Commission
1120 Lincoln Street, Suite 801
Denver, CO 80203

RE: Proposed Wellbore Spacing Unit
North Platte F-J-28HNC
Niobrara New Drill
NESW Section 21, Township 5N, Range 63W, 6th PM
Weld County, Colorado

Dear Director Murphy,

Bonanza Creek Energy Operating Company, LLC. ("Bonanza Creek") is planning to drill the above captioned well in accordance with the provisions of Colorado Oil and Gas Conservation Commission (COGCC) Rule 318A.e.

Bonanza Creek's proposed wellbore spacing unit consists of:

Township 5N, Range 63W (Weld County):
Section 21: S2SW
Section 28: W2

Total acres: 400ac

The 30 day notification time period has passed and we have not yet received any objections to such well locations or proposed spacing unit, therefore Bonanza Creek hereby requests the Director to approve the above mentioned well. Bonanza Creek respectfully requests the COGCC review the enclosed map illustrating the proposed wellbore spacing unit.

Regards,
Bonanza Creek Energy Operating Company, LLC.

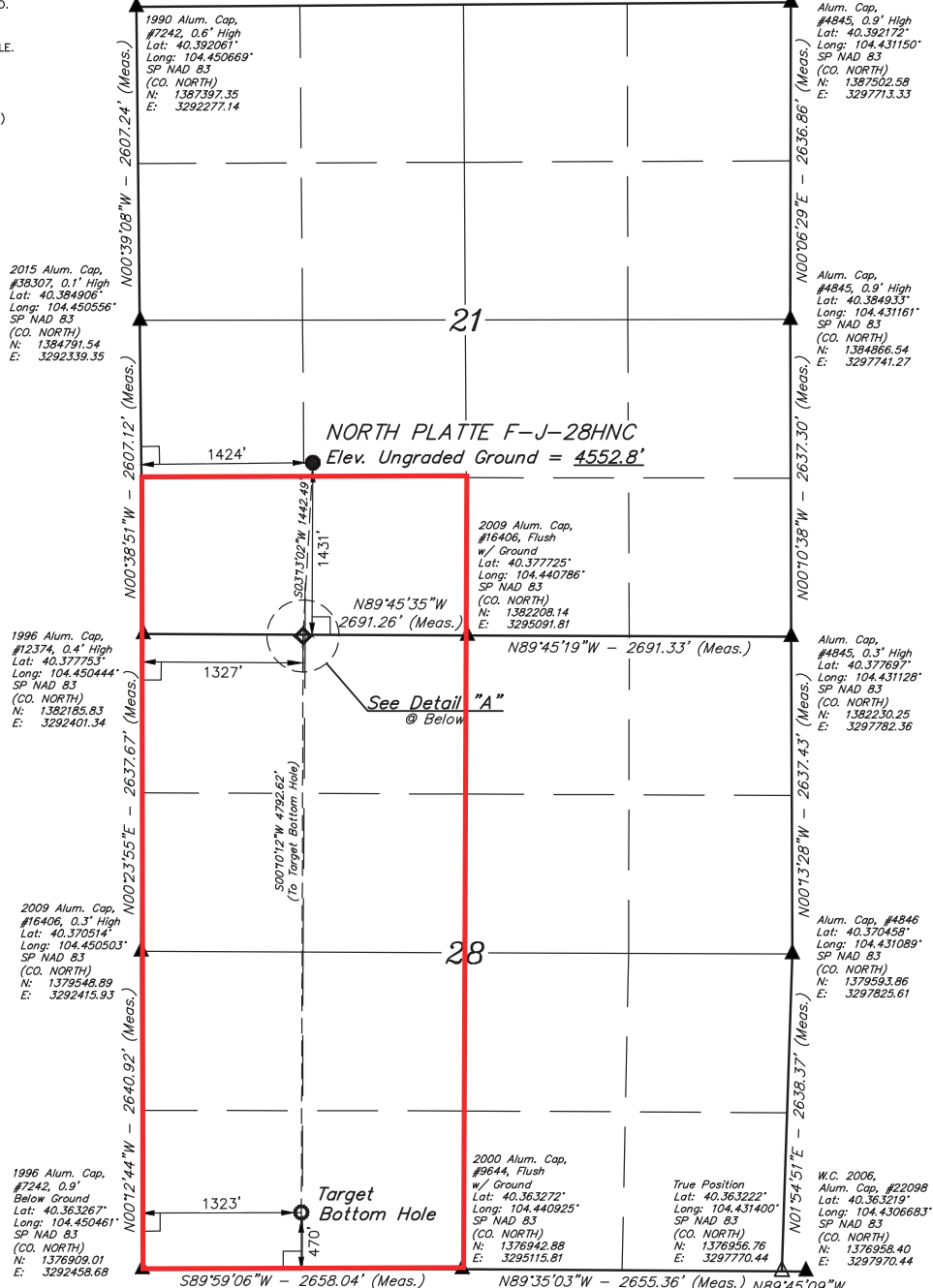
Brian Dodek, P.G.
Manager – Environmental & Regulatory Compliance

LEGEND:

- = 90° SYMBOL
- = PROPOSED WELLHEAD.
- ◆ = ENTRY TARGET.
- = TARGET BOTTOM HOLE.
- ▲ = SECTION CORNERS LOCATED. (NAD 83)
- △ = SECTION CORNERS RE-ESTABLISHED. (Not Set on Ground.) (NAD 83)

T5N, R63W, 6th P.M.

S89°36'24"W - 5438.62' (Meas.)

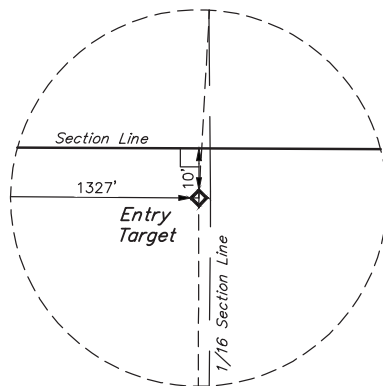


Detail "A"
No Scale

PDOP = 1.2



NAD 83 (SURFACE LOCATION)	
LATITUDE = 40°22'53.99" (40.381664)	
LONGITUDE = 104°26'43.42" (104.445395)	
STATE PLANE NAD 83 (CO. NORTH)	
N: 1383627.58 E: 3293790.96	
NAD 83 (ENTRY TARGET)	
LATITUDE = 40°22'39.76" (40.377711)	
LONGITUDE = 104°26'44.46" (104.445682)	
STATE PLANE NAD 83 (CO. NORTH)	
N: 1382186.84 E: 3293728.01	
NAD 83 (TARGET BOTTOM HOLE)	
LATITUDE = 40°21'52.41" (40.364559)	
LONGITUDE = 104°26'44.60" (104.445723)	
STATE PLANE NAD 83 (CO. NORTH)	
N: 1377395.69 E: 3293773.63	



CERTIFICATE OF REGISTRATION
THIS IS TO CERTIFY THAT THE ABOVE TOWER, PREPARED AND PLACED UNDER MY SURVEILLANCE AND THAT THE SAME ARE TRUE AND CORRECT TO THE BEST OF MY KNOWLEDGE AND BELIEF.

REGISTERED LAND SURVEYOR
REGISTRATION NO. 28285
STATE OF COLORADO
JANUARY 18, 2018

REV: 2 01-29-18 D.J.W. (SURFACE MOVE & LATERAL CHANGE)

BONANZA CREEK ENERGY
OPERATING COMPANY, LLC

NORTH PLATTE F-J-28HNC
NE 1/4 SW 1/4, SECTION 21, T5N, R63W, 6th P.M.
WELD COUNTY, COLORADO

SURVEYED BY	CHAD MEIERS, O.R.	01-10-18	SCALE
DRAWN BY	M.F.D.	11-03-16	1" = 1000'

WELL LOCATION PLAT



UELS, LLC
Corporate Office * 85 South 200 East
Vernal, UT 84078 * (435) 789-1017



USGS COOPERATIVE BASE NETWORK CONTROL STATION, DESIGNATION "M414". NGS DATA SHEET LISTS THE NAVD 88 ELEVATION AS BEING 4600.58 FEET.