

# **SRC ENERGY**

**WELD COUNTY (NAD83, TRUE NORTH)**

**5N-66W-07 BOST FARM 5-7 PAD**

**BOST FARM 1N-8C-L**

**Wellbore #1**

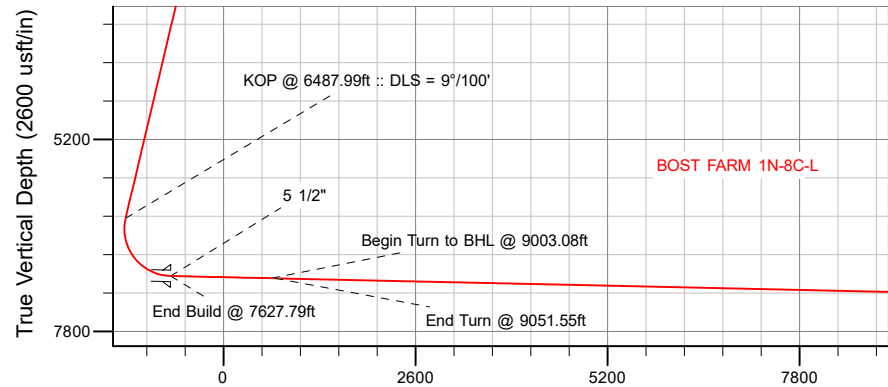
**Plan: Design #1**

## **Standard Planning Report**

**28 December, 2017**

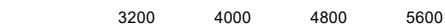
# SRC ENERGY

CASING DETAILS			
TVD	MD	Name	Size
1750.00	1788.61	9 5/8"	9-5/8
7051.00	7627.79	5 1/2"	5-1/2



Vertical Section at 85.20° (2600 usft/in)

West(-)/East(+) (1600 usft/in)



SECTION DETAILS										
Sec	MD	Inc	Azi	TVD	+N/-S	+E/-W	Dleg	TFace	VSect	Target
1	0.00	0.00	0.00	0.00	0.00	0.00	0.00	0.00	0.00	
2	250.00	0.00	0.00	250.00	0.00	0.00	0.00	0.00	0.00	
3	1045.00	15.90	299.10	1034.84	53.30	-95.77	2.00	299.10	-90.97	
4	6487.99	15.90	299.10	6269.58	778.51	-1398.70	0.00	0.00	-1328.64	
5	7627.79	88.74	89.84	7051.00	886.57	-794.67	9.00	149.95	-717.68	
6	9003.08	88.74	89.84	7081.18	890.43	580.28	0.00	0.00	652.77	BOST FARM 1N-8C-L_tgt
7	9051.55	88.74	90.81	7082.24	890.16	628.74	2.00	90.18	701.03	
8	17589.36	88.74	90.81	7270.00	769.65	9163.63	0.00	0.00	9195.90	BOST FARM 1N-8C-L_BHL

WELLBORE TARGET DETAILS (LAT/LONG)					
Name	TVD	+N/-S	+E/-W	Latitude	Longitude
BOST FARM 1N-8C-L_SHL	0.00	0.00	0.00	40.417866	-104.829010
BOST FARM 1N-8C-L_BHL	7270.00	769.65	9163.63	40.419974	-104.796098

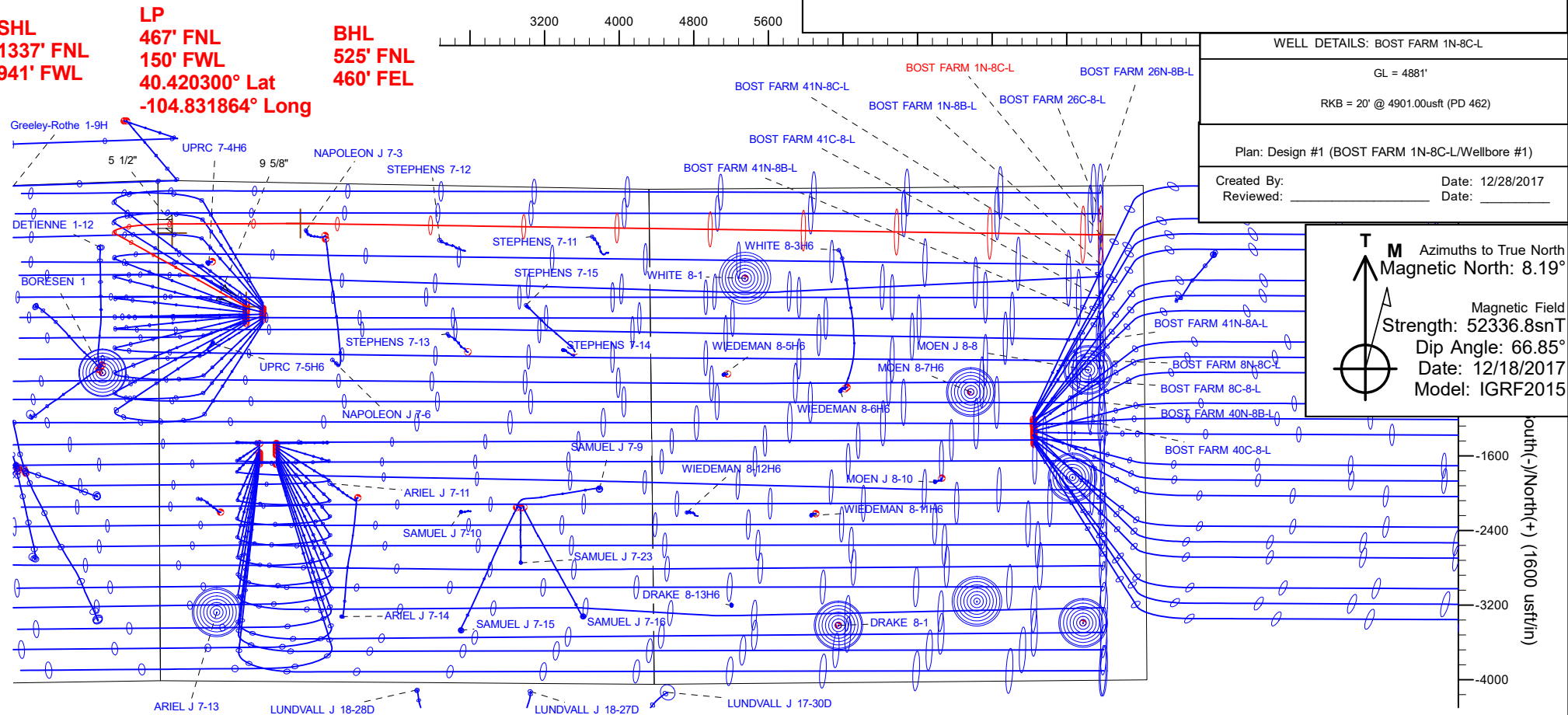
WELL DETAILS: BOST FARM 1N-8C-L

GL = 4881'

RKB = 20' @ 4901.00usft (PD 462)

Plan: Design #1 (BOST FARM 1N-8C-L/Wellbore #1)

Created By: \_\_\_\_\_ Date: 12/28/2017  
Reviewed: \_\_\_\_\_ Date: \_\_\_\_\_



# Hewlett-Packard

## Planning Report

<b>Database:</b>	EDM 5000.14 Single User Db	<b>Local Co-ordinate Reference:</b>	Well BOST FARM 1N-8C-L
<b>Company:</b>	SRC ENERGY	<b>TVD Reference:</b>	RKB = 20' @ 4901.00usft (PD 462)
<b>Project:</b>	WELD COUNTY (NAD83, TRUE NORTH)	<b>MD Reference:</b>	RKB = 20' @ 4901.00usft (PD 462)
<b>Site:</b>	5N-66W-07 BOST FARM 5-7 PAD	<b>North Reference:</b>	True
<b>Well:</b>	BOST FARM 1N-8C-L	<b>Survey Calculation Method:</b>	Minimum Curvature
<b>Wellbore:</b>	Wellbore #1		
<b>Design:</b>	Design #1		

<b>Project</b>	WELD COUNTY (NAD83, TRUE NORTH)		
<b>Map System:</b>	US State Plane 1983	<b>System Datum:</b>	Mean Sea Level
<b>Geo Datum:</b>	North American Datum 1983		
<b>Map Zone:</b>	Colorado Northern Zone		

<b>Site</b>	5N-66W-07 BOST FARM 5-7 PAD			
<b>Site Position:</b>		<b>Northing:</b>	1,395,815.76 usft	<b>Latitude:</b> 40.417972
<b>From:</b>	Lat/Long	<b>Easting:</b>	3,187,006.76 usft	<b>Longitude:</b> -104.828362
<b>Position Uncertainty:</b>	0.00 usft	<b>Slot Radius:</b>	13-3/16 "	<b>Grid Convergence:</b> 0.43 °

<b>Well</b>	BOST FARM 1N-8C-L			
<b>Well Position</b>	<b>+N/-S</b>	-38.62 usft	<b>Northing:</b>	1,395,775.77 usft
	<b>+E/-W</b>	-180.43 usft	<b>Easting:</b>	3,186,826.63 usft
<b>Position Uncertainty</b>		3.28 usft	<b>Wellhead Elevation:</b>	<b>Ground Level:</b> 4,881.00 usft

<b>Wellbore</b>	Wellbore #1				
<b>Magnetics</b>	<b>Model Name</b>	<b>Sample Date</b>	<b>Declination (°)</b>	<b>Dip Angle (°)</b>	<b>Field Strength (nT)</b>
	IGRF2015	12/18/2017	8.19	66.85	52,336.81559114

<b>Design</b>	Design #1			
<b>Audit Notes:</b>				
<b>Version:</b>	<b>Phase:</b>	PLAN	<b>Tie On Depth:</b>	0.00
<b>Vertical Section:</b>	<b>Depth From (TVD) (usft)</b>	<b>+N/-S (usft)</b>	<b>+E/-W (usft)</b>	<b>Direction (°)</b>
	0.00	0.00	0.00	85.20

<b>Plan Survey Tool Program</b>	<b>Date</b>	12/28/2017		
<b>Depth From (usft)</b>	<b>Depth To (usft)</b>	<b>Survey (Wellbore)</b>	<b>Tool Name</b>	<b>Remarks</b>
1	0.00	1,750.00	Design #1 (Wellbore #1)	SRC Energy_ISCWSA REV 2 Fixed:v2:crustal field declinatio
2	1,750.00	17,589.36	Design #1 (Wellbore #1)	SRC Energy_ISCWSA REV 2 Fixed:v2:crustal field declinatio

Hewlett-Packard  
Planning Report

Database:	EDM 5000.14 Single User Db	Local Co-ordinate Reference:	Well BOST FARM 1N-8C-L
Company:	SRC ENERGY	TVD Reference:	RKB = 20' @ 4901.00usft (PD 462)
Project:	WELD COUNTY (NAD83, TRUE NORTH)	MD Reference:	RKB = 20' @ 4901.00usft (PD 462)
Site:	5N-66W-07 BOST FARM 5-7 PAD	North Reference:	True
Well:	BOST FARM 1N-8C-L	Survey Calculation Method:	Minimum Curvature
Wellbore:	Wellbore #1		
Design:	Design #1		

Plan Sections										
Measured Depth (usft)	Inclination (°)	Azimuth (°)	Vertical Depth (usft)	+N/-S (usft)	+E/-W (usft)	Dogleg Rate (°/100usft)	Build Rate (°/100usft)	Turn Rate (°/100usft)	TFO (°)	Target
0.00	0.00	0.00	0.00	0.00	0.00	0.00	0.00	0.00	0.00	
250.00	0.00	0.00	250.00	0.00	0.00	0.00	0.00	0.00	0.00	
1,045.00	15.90	299.10	1,034.84	53.30	-95.77	2.00	2.00	0.00	299.10	
6,487.99	15.90	299.10	6,269.58	778.51	-1,398.70	0.00	0.00	0.00	0.00	
7,627.79	88.74	89.84	7,051.00	886.57	-794.67	9.00	6.39	13.23	149.95	
9,003.08	88.74	89.84	7,081.18	890.43	580.28	0.00	0.00	0.00	0.00	BOST FARM 1N-8C-L
9,051.55	88.74	90.81	7,082.24	890.16	628.74	2.00	-0.01	2.00	90.18	
17,589.36	88.74	90.81	7,270.00	769.65	9,163.63	0.00	0.00	0.00	0.00	BOST FARM 1N-8C-L

# Hewlett-Packard

## Planning Report

<b>Database:</b>	EDM 5000.14 Single User Db	<b>Local Co-ordinate Reference:</b>	Well BOST FARM 1N-8C-L
<b>Company:</b>	SRC ENERGY	<b>TVD Reference:</b>	RKB = 20' @ 4901.00usft (PD 462)
<b>Project:</b>	WELD COUNTY (NAD83, TRUE NORTH)	<b>MD Reference:</b>	RKB = 20' @ 4901.00usft (PD 462)
<b>Site:</b>	5N-66W-07 BOST FARM 5-7 PAD	<b>North Reference:</b>	True
<b>Well:</b>	BOST FARM 1N-8C-L	<b>Survey Calculation Method:</b>	Minimum Curvature
<b>Wellbore:</b>	Wellbore #1		
<b>Design:</b>	Design #1		

Planned Survey									
Measured Depth (usft)	Inclination (°)	Azimuth (°)	Vertical Depth (usft)	+N/-S (usft)	+E/-W (usft)	Vertical Section (usft)	Dogleg Rate (°/100usft)	Build Rate (°/100usft)	Turn Rate (°/100usft)
0.00	0.00	0.00	0.00	0.00	0.00	0.00	0.00	0.00	0.00
100.00	0.00	0.00	100.00	0.00	0.00	0.00	0.00	0.00	0.00
200.00	0.00	0.00	200.00	0.00	0.00	0.00	0.00	0.00	0.00
250.00	0.00	0.00	250.00	0.00	0.00	0.00	0.00	0.00	0.00
Begin Nudge @ 250.00ft									
300.00	1.00	299.10	300.00	0.21	-0.38	-0.36	2.00	2.00	0.00
400.00	3.00	299.10	399.93	1.91	-3.43	-3.26	2.00	2.00	0.00
500.00	5.00	299.10	499.68	5.30	-9.53	-9.05	2.00	2.00	0.00
600.00	7.00	299.10	599.13	10.39	-18.66	-17.72	2.00	2.00	0.00
700.00	9.00	299.10	698.15	17.15	-30.82	-29.27	2.00	2.00	0.00
800.00	11.00	299.10	796.63	25.60	-45.99	-43.69	2.00	2.00	0.00
900.00	13.00	299.10	894.44	35.71	-64.16	-60.94	2.00	2.00	0.00
1,000.00	15.00	299.10	991.46	47.47	-85.29	-81.02	2.00	2.00	0.00
1,045.00	15.90	299.10	1,034.84	53.30	-95.77	-90.97	2.00	2.00	0.00
End Nudge @ 1045.00ft									
1,100.00	15.90	299.10	1,087.73	60.63	-108.93	-103.48	0.00	0.00	0.00
1,200.00	15.90	299.10	1,183.91	73.96	-132.87	-126.22	0.00	0.00	0.00
1,300.00	15.90	299.10	1,280.08	87.28	-156.81	-148.95	0.00	0.00	0.00
1,400.00	15.90	299.10	1,376.25	100.60	-180.75	-171.69	0.00	0.00	0.00
1,500.00	15.90	299.10	1,472.43	113.93	-204.69	-194.43	0.00	0.00	0.00
1,600.00	15.90	299.10	1,568.60	127.25	-228.62	-217.17	0.00	0.00	0.00
1,700.00	15.90	299.10	1,664.78	140.57	-252.56	-239.91	0.00	0.00	0.00
1,788.61	15.90	299.10	1,750.00	152.38	-273.77	-260.06	0.00	0.00	0.00
9 5/8"									
1,800.00	15.90	299.10	1,760.95	153.90	-276.50	-262.65	0.00	0.00	0.00
1,900.00	15.90	299.10	1,857.12	167.22	-300.44	-285.39	0.00	0.00	0.00
2,000.00	15.90	299.10	1,953.30	180.54	-324.37	-308.13	0.00	0.00	0.00
2,100.00	15.90	299.10	2,049.47	193.87	-348.31	-330.86	0.00	0.00	0.00
2,200.00	15.90	299.10	2,145.65	207.19	-372.25	-353.60	0.00	0.00	0.00
2,300.00	15.90	299.10	2,241.82	220.52	-396.19	-376.34	0.00	0.00	0.00
2,400.00	15.90	299.10	2,337.99	233.84	-420.13	-399.08	0.00	0.00	0.00
2,500.00	15.90	299.10	2,434.17	247.16	-444.06	-421.82	0.00	0.00	0.00
2,600.00	15.90	299.10	2,530.34	260.49	-468.00	-444.56	0.00	0.00	0.00
2,700.00	15.90	299.10	2,626.52	273.81	-491.94	-467.30	0.00	0.00	0.00
2,800.00	15.90	299.10	2,722.69	287.13	-515.88	-490.03	0.00	0.00	0.00
2,900.00	15.90	299.10	2,818.87	300.46	-539.81	-512.77	0.00	0.00	0.00
3,000.00	15.90	299.10	2,915.04	313.78	-563.75	-535.51	0.00	0.00	0.00
3,100.00	15.90	299.10	3,011.21	327.10	-587.69	-558.25	0.00	0.00	0.00
3,200.00	15.90	299.10	3,107.39	340.43	-611.63	-580.99	0.00	0.00	0.00
3,300.00	15.90	299.10	3,203.56	353.75	-635.57	-603.73	0.00	0.00	0.00
3,400.00	15.90	299.10	3,299.74	367.07	-659.50	-626.47	0.00	0.00	0.00
3,500.00	15.90	299.10	3,395.91	380.40	-683.44	-649.21	0.00	0.00	0.00
3,600.00	15.90	299.10	3,492.08	393.72	-707.38	-671.94	0.00	0.00	0.00
3,700.00	15.90	299.10	3,588.26	407.05	-731.32	-694.68	0.00	0.00	0.00
3,800.00	15.90	299.10	3,684.43	420.37	-755.25	-717.42	0.00	0.00	0.00
3,900.00	15.90	299.10	3,780.61	433.69	-779.19	-740.16	0.00	0.00	0.00
4,000.00	15.90	299.10	3,876.78	447.02	-803.13	-762.90	0.00	0.00	0.00
4,100.00	15.90	299.10	3,972.96	460.34	-827.07	-785.64	0.00	0.00	0.00
4,200.00	15.90	299.10	4,069.13	473.66	-851.01	-808.38	0.00	0.00	0.00
4,300.00	15.90	299.10	4,165.30	486.99	-874.94	-831.12	0.00	0.00	0.00
4,400.00	15.90	299.10	4,261.48	500.31	-898.88	-853.85	0.00	0.00	0.00
4,500.00	15.90	299.10	4,357.65	513.63	-922.82	-876.59	0.00	0.00	0.00
4,600.00	15.90	299.10	4,453.83	526.96	-946.76	-899.33	0.00	0.00	0.00

# Hewlett-Packard

## Planning Report

<b>Database:</b>	EDM 5000.14 Single User Db	<b>Local Co-ordinate Reference:</b>	Well BOST FARM 1N-8C-L
<b>Company:</b>	SRC ENERGY	<b>TVD Reference:</b>	RKB = 20' @ 4901.00usft (PD 462)
<b>Project:</b>	WELD COUNTY (NAD83, TRUE NORTH)	<b>MD Reference:</b>	RKB = 20' @ 4901.00usft (PD 462)
<b>Site:</b>	5N-66W-07 BOST FARM 5-7 PAD	<b>North Reference:</b>	True
<b>Well:</b>	BOST FARM 1N-8C-L	<b>Survey Calculation Method:</b>	Minimum Curvature
<b>Wellbore:</b>	Wellbore #1		
<b>Design:</b>	Design #1		

Planned Survey									
Measured Depth (usft)	Inclination (°)	Azimuth (°)	Vertical Depth (usft)	+N/-S (usft)	+E/-W (usft)	Vertical Section (usft)	Dogleg Rate (°/100usft)	Build Rate (°/100usft)	Turn Rate (°/100usft)
4,700.00	15.90	299.10	4,550.00	540.28	-970.69	-922.07	0.00	0.00	0.00
4,800.00	15.90	299.10	4,646.17	553.61	-994.63	-944.81	0.00	0.00	0.00
4,900.00	15.90	299.10	4,742.35	566.93	-1,018.57	-967.55	0.00	0.00	0.00
5,000.00	15.90	299.10	4,838.52	580.25	-1,042.51	-990.29	0.00	0.00	0.00
5,100.00	15.90	299.10	4,934.70	593.58	-1,066.45	-1,013.02	0.00	0.00	0.00
5,200.00	15.90	299.10	5,030.87	606.90	-1,090.38	-1,035.76	0.00	0.00	0.00
5,300.00	15.90	299.10	5,127.04	620.22	-1,114.32	-1,058.50	0.00	0.00	0.00
5,400.00	15.90	299.10	5,223.22	633.55	-1,138.26	-1,081.24	0.00	0.00	0.00
5,500.00	15.90	299.10	5,319.39	646.87	-1,162.20	-1,103.98	0.00	0.00	0.00
5,600.00	15.90	299.10	5,415.57	660.19	-1,186.13	-1,126.72	0.00	0.00	0.00
5,700.00	15.90	299.10	5,511.74	673.52	-1,210.07	-1,149.46	0.00	0.00	0.00
5,800.00	15.90	299.10	5,607.92	686.84	-1,234.01	-1,172.20	0.00	0.00	0.00
5,900.00	15.90	299.10	5,704.09	700.16	-1,257.95	-1,194.93	0.00	0.00	0.00
6,000.00	15.90	299.10	5,800.26	713.49	-1,281.89	-1,217.67	0.00	0.00	0.00
6,100.00	15.90	299.10	5,896.44	726.81	-1,305.82	-1,240.41	0.00	0.00	0.00
6,200.00	15.90	299.10	5,992.61	740.14	-1,329.76	-1,263.15	0.00	0.00	0.00
6,300.00	15.90	299.10	6,088.79	753.46	-1,353.70	-1,285.89	0.00	0.00	0.00
6,400.00	15.90	299.10	6,184.96	766.78	-1,377.64	-1,308.63	0.00	0.00	0.00
6,487.99	15.90	299.10	6,269.58	778.51	-1,398.70	-1,328.64	0.00	0.00	0.00
<b>KOP @ 6487.99ft :: DLS = 9°/100'</b>									
6,500.00	14.97	301.19	6,281.16	780.11	-1,401.46	-1,331.26	9.00	-7.71	17.44
6,550.00	11.41	313.35	6,329.84	786.85	-1,410.59	-1,339.79	9.00	-7.13	24.31
6,600.00	8.73	334.35	6,379.08	793.67	-1,415.83	-1,344.44	9.00	-5.35	42.00
6,650.00	7.92	5.31	6,428.58	800.53	-1,417.16	-1,345.18	9.00	-1.63	61.93
6,700.00	9.45	33.73	6,478.03	807.38	-1,414.56	-1,342.02	9.00	3.07	56.82
6,750.00	12.50	51.35	6,527.12	814.17	-1,408.05	-1,334.97	9.00	6.09	35.26
6,800.00	16.23	61.60	6,575.56	820.88	-1,397.67	-1,324.07	9.00	7.46	20.50
6,850.00	20.27	67.99	6,623.04	827.45	-1,383.49	-1,309.38	9.00	8.08	12.77
6,900.00	24.46	72.29	6,669.27	833.85	-1,365.59	-1,291.01	9.00	8.39	8.61
6,950.00	28.74	75.39	6,713.97	840.03	-1,344.09	-1,269.07	9.00	8.56	6.20
7,000.00	33.08	77.74	6,756.86	845.96	-1,319.11	-1,243.68	9.00	8.67	4.70
7,050.00	37.45	79.60	6,797.68	851.61	-1,290.81	-1,215.00	9.00	8.74	3.72
7,100.00	41.84	81.12	6,836.17	856.93	-1,259.36	-1,183.22	9.00	8.79	3.04
7,150.00	46.25	82.40	6,872.10	861.90	-1,224.97	-1,148.53	9.00	8.82	2.56
7,200.00	50.68	83.50	6,905.24	866.48	-1,187.83	-1,111.14	9.00	8.85	2.21
7,250.00	55.11	84.47	6,935.40	870.65	-1,148.18	-1,071.29	9.00	8.87	1.94
7,300.00	59.55	85.34	6,962.38	874.38	-1,106.27	-1,029.21	9.00	8.88	1.74
7,350.00	64.00	86.14	6,986.02	877.64	-1,062.35	-985.17	9.00	8.89	1.59
7,400.00	68.45	86.88	7,006.18	880.42	-1,016.69	-939.43	9.00	8.90	1.48
7,450.00	72.90	87.57	7,022.73	882.70	-969.57	-892.29	9.00	8.90	1.39
7,500.00	77.35	88.23	7,035.56	884.46	-921.29	-844.04	9.00	8.91	1.32
7,550.00	81.81	88.87	7,044.60	885.71	-872.15	-794.96	9.00	8.91	1.28
7,600.00	86.26	89.50	7,049.79	886.41	-822.44	-745.36	9.00	8.91	1.25
7,627.79	88.74	89.84	7,051.00	886.57	-794.67	-717.68	9.00	8.91	1.24
<b>End Build @ 7627.79ft - 5 1/2"</b>									
7,700.00	88.74	89.84	7,052.59	886.78	-722.48	-645.73	0.00	0.00	0.00
7,800.00	88.74	89.84	7,054.78	887.06	-622.51	-546.08	0.00	0.00	0.00
7,900.00	88.74	89.84	7,056.98	887.34	-522.53	-446.43	0.00	0.00	0.00
8,000.00	88.74	89.84	7,059.17	887.62	-422.56	-346.78	0.00	0.00	0.00
8,100.00	88.74	89.84	7,061.36	887.90	-322.58	-247.14	0.00	0.00	0.00
8,200.00	88.74	89.84	7,063.56	888.18	-222.60	-147.49	0.00	0.00	0.00
8,300.00	88.74	89.84	7,065.75	888.46	-122.63	-47.84	0.00	0.00	0.00
8,400.00	88.74	89.84	7,067.95	888.74	-22.65	51.81	0.00	0.00	0.00
8,500.00	88.74	89.84	7,070.14	889.02	77.32	151.46	0.00	0.00	0.00

# Hewlett-Packard

## Planning Report

<b>Database:</b>	EDM 5000.14 Single User Db	<b>Local Co-ordinate Reference:</b>	Well BOST FARM 1N-8C-L
<b>Company:</b>	SRC ENERGY	<b>TVD Reference:</b>	RKB = 20' @ 4901.00usft (PD 462)
<b>Project:</b>	WELD COUNTY (NAD83, TRUE NORTH)	<b>MD Reference:</b>	RKB = 20' @ 4901.00usft (PD 462)
<b>Site:</b>	5N-66W-07 BOST FARM 5-7 PAD	<b>North Reference:</b>	True
<b>Well:</b>	BOST FARM 1N-8C-L	<b>Survey Calculation Method:</b>	Minimum Curvature
<b>Wellbore:</b>	Wellbore #1		
<b>Design:</b>	Design #1		

Planned Survey										
Measured Depth (usft)	Inclination (°)	Azimuth (°)	Vertical Depth (usft)	+N/-S (usft)	+E/-W (usft)	Vertical Section (usft)	Dogleg Rate (°/100usft)	Build Rate (°/100usft)	Turn Rate (°/100usft)	
8,600.00	88.74	89.84	7,072.34	889.30	177.30	251.11	0.00	0.00	0.00	
8,700.00	88.74	89.84	7,074.53	889.58	277.27	350.75	0.00	0.00	0.00	
8,800.00	88.74	89.84	7,076.72	889.86	377.25	450.40	0.00	0.00	0.00	
8,900.00	88.74	89.84	7,078.92	890.14	477.22	550.05	0.00	0.00	0.00	
9,003.08	88.74	89.84	7,081.18	890.43	580.28	652.77	0.00	0.00	0.00	
Begin Turn to BHL @ 9003.08ft										
9,051.55	88.74	90.81	7,082.24	890.16	628.74	701.03	2.00	-0.01	2.00	
End Turn @ 9051.55ft										
9,100.00	88.74	90.81	7,083.31	889.47	677.17	749.24	0.00	0.00	0.00	
9,200.00	88.74	90.81	7,085.51	888.06	777.13	848.73	0.00	0.00	0.00	
9,300.00	88.74	90.81	7,087.71	886.65	877.10	948.23	0.00	0.00	0.00	
9,400.00	88.74	90.81	7,089.91	885.24	977.07	1,047.73	0.00	0.00	0.00	
9,500.00	88.74	90.81	7,092.11	883.83	1,077.03	1,147.23	0.00	0.00	0.00	
9,600.00	88.74	90.81	7,094.31	882.41	1,177.00	1,246.72	0.00	0.00	0.00	
9,700.00	88.74	90.81	7,096.50	881.00	1,276.96	1,346.22	0.00	0.00	0.00	
9,800.00	88.74	90.81	7,098.70	879.59	1,376.93	1,445.72	0.00	0.00	0.00	
9,900.00	88.74	90.81	7,100.90	878.18	1,476.90	1,545.21	0.00	0.00	0.00	
10,000.00	88.74	90.81	7,103.10	876.77	1,576.86	1,644.71	0.00	0.00	0.00	
10,100.00	88.74	90.81	7,105.30	875.36	1,676.83	1,744.21	0.00	0.00	0.00	
10,200.00	88.74	90.81	7,107.50	873.95	1,776.79	1,843.70	0.00	0.00	0.00	
10,300.00	88.74	90.81	7,109.70	872.53	1,876.76	1,943.20	0.00	0.00	0.00	
10,400.00	88.74	90.81	7,111.90	871.12	1,976.73	2,042.70	0.00	0.00	0.00	
10,500.00	88.74	90.81	7,114.10	869.71	2,076.69	2,142.20	0.00	0.00	0.00	
10,600.00	88.74	90.81	7,116.30	868.30	2,176.66	2,241.69	0.00	0.00	0.00	
10,700.00	88.74	90.81	7,118.50	866.89	2,276.62	2,341.19	0.00	0.00	0.00	
10,800.00	88.74	90.81	7,120.70	865.48	2,376.59	2,440.69	0.00	0.00	0.00	
10,900.00	88.74	90.81	7,122.89	864.07	2,476.55	2,540.18	0.00	0.00	0.00	
11,000.00	88.74	90.81	7,125.09	862.65	2,576.52	2,639.68	0.00	0.00	0.00	
11,100.00	88.74	90.81	7,127.29	861.24	2,676.49	2,739.18	0.00	0.00	0.00	
11,200.00	88.74	90.81	7,129.49	859.83	2,776.45	2,838.67	0.00	0.00	0.00	
11,300.00	88.74	90.81	7,131.69	858.42	2,876.42	2,938.17	0.00	0.00	0.00	
11,400.00	88.74	90.81	7,133.89	857.01	2,976.38	3,037.67	0.00	0.00	0.00	
11,500.00	88.74	90.81	7,136.09	855.60	3,076.35	3,137.17	0.00	0.00	0.00	
11,600.00	88.74	90.81	7,138.29	854.19	3,176.32	3,236.66	0.00	0.00	0.00	
11,700.00	88.74	90.81	7,140.49	852.77	3,276.28	3,336.16	0.00	0.00	0.00	
11,800.00	88.74	90.81	7,142.69	851.36	3,376.25	3,435.66	0.00	0.00	0.00	
11,900.00	88.74	90.81	7,144.89	849.95	3,476.21	3,535.15	0.00	0.00	0.00	
12,000.00	88.74	90.81	7,147.08	848.54	3,576.18	3,634.65	0.00	0.00	0.00	
12,100.00	88.74	90.81	7,149.28	847.13	3,676.14	3,734.15	0.00	0.00	0.00	
12,200.00	88.74	90.81	7,151.48	845.72	3,776.11	3,833.64	0.00	0.00	0.00	
12,300.00	88.74	90.81	7,153.68	844.31	3,876.08	3,933.14	0.00	0.00	0.00	
12,400.00	88.74	90.81	7,155.88	842.89	3,976.04	4,032.64	0.00	0.00	0.00	
12,500.00	88.74	90.81	7,158.08	841.48	4,076.01	4,132.14	0.00	0.00	0.00	
12,600.00	88.74	90.81	7,160.28	840.07	4,175.97	4,231.63	0.00	0.00	0.00	
12,700.00	88.74	90.81	7,162.48	838.66	4,275.94	4,331.13	0.00	0.00	0.00	
12,800.00	88.74	90.81	7,164.68	837.25	4,375.91	4,430.63	0.00	0.00	0.00	
12,900.00	88.74	90.81	7,166.88	835.84	4,475.87	4,530.12	0.00	0.00	0.00	
13,000.00	88.74	90.81	7,169.08	834.43	4,575.84	4,629.62	0.00	0.00	0.00	
13,100.00	88.74	90.81	7,171.27	833.01	4,675.80	4,729.12	0.00	0.00	0.00	
13,200.00	88.74	90.81	7,173.47	831.60	4,775.77	4,828.61	0.00	0.00	0.00	
13,300.00	88.74	90.81	7,175.67	830.19	4,875.73	4,928.11	0.00	0.00	0.00	
13,400.00	88.74	90.81	7,177.87	828.78	4,975.70	5,027.61	0.00	0.00	0.00	
13,500.00	88.74	90.81	7,180.07	827.37	5,075.67	5,127.10	0.00	0.00	0.00	
13,600.00	88.74	90.81	7,182.27	825.96	5,175.63	5,226.60	0.00	0.00	0.00	

# Hewlett-Packard

## Planning Report

<b>Database:</b>	EDM 5000.14 Single User Db	<b>Local Co-ordinate Reference:</b>	Well BOST FARM 1N-8C-L
<b>Company:</b>	SRC ENERGY	<b>TVD Reference:</b>	RKB = 20' @ 4901.00usft (PD 462)
<b>Project:</b>	WELD COUNTY (NAD83, TRUE NORTH)	<b>MD Reference:</b>	RKB = 20' @ 4901.00usft (PD 462)
<b>Site:</b>	5N-66W-07 BOST FARM 5-7 PAD	<b>North Reference:</b>	True
<b>Well:</b>	BOST FARM 1N-8C-L	<b>Survey Calculation Method:</b>	Minimum Curvature
<b>Wellbore:</b>	Wellbore #1		
<b>Design:</b>	Design #1		

Planned Survey										
Measured Depth (usft)	Inclination (°)	Azimuth (°)	Vertical Depth (usft)	+N/-S (usft)	+E/-W (usft)	Vertical Section (usft)	Dogleg Rate (°/100usft)	Build Rate (°/100usft)	Turn Rate (°/100usft)	
13,700.00	88.74	90.81	7,184.47	824.55	5,275.60	5,326.10	0.00	0.00	0.00	
13,800.00	88.74	90.81	7,186.67	823.13	5,375.56	5,425.60	0.00	0.00	0.00	
13,900.00	88.74	90.81	7,188.87	821.72	5,475.53	5,525.09	0.00	0.00	0.00	
14,000.00	88.74	90.81	7,191.07	820.31	5,575.50	5,624.59	0.00	0.00	0.00	
14,100.00	88.74	90.81	7,193.27	818.90	5,675.46	5,724.09	0.00	0.00	0.00	
14,200.00	88.74	90.81	7,195.46	817.49	5,775.43	5,823.58	0.00	0.00	0.00	
14,300.00	88.74	90.81	7,197.66	816.08	5,875.39	5,923.08	0.00	0.00	0.00	
14,400.00	88.74	90.81	7,199.86	814.67	5,975.36	6,022.58	0.00	0.00	0.00	
14,500.00	88.74	90.81	7,202.06	813.25	6,075.33	6,122.07	0.00	0.00	0.00	
14,600.00	88.74	90.81	7,204.26	811.84	6,175.29	6,221.57	0.00	0.00	0.00	
14,700.00	88.74	90.81	7,206.46	810.43	6,275.26	6,321.07	0.00	0.00	0.00	
14,800.00	88.74	90.81	7,208.66	809.02	6,375.22	6,420.57	0.00	0.00	0.00	
14,900.00	88.74	90.81	7,210.86	807.61	6,475.19	6,520.06	0.00	0.00	0.00	
15,000.00	88.74	90.81	7,213.06	806.20	6,575.15	6,619.56	0.00	0.00	0.00	
15,100.00	88.74	90.81	7,215.26	804.79	6,675.12	6,719.06	0.00	0.00	0.00	
15,200.00	88.74	90.81	7,217.46	803.37	6,775.09	6,818.55	0.00	0.00	0.00	
15,300.00	88.74	90.81	7,219.65	801.96	6,875.05	6,918.05	0.00	0.00	0.00	
15,400.00	88.74	90.81	7,221.85	800.55	6,975.02	7,017.55	0.00	0.00	0.00	
15,500.00	88.74	90.81	7,224.05	799.14	7,074.98	7,117.04	0.00	0.00	0.00	
15,600.00	88.74	90.81	7,226.25	797.73	7,174.95	7,216.54	0.00	0.00	0.00	
15,700.00	88.74	90.81	7,228.45	796.32	7,274.92	7,316.04	0.00	0.00	0.00	
15,800.00	88.74	90.81	7,230.65	794.91	7,374.88	7,415.54	0.00	0.00	0.00	
15,900.00	88.74	90.81	7,232.85	793.49	7,474.85	7,515.03	0.00	0.00	0.00	
16,000.00	88.74	90.81	7,235.05	792.08	7,574.81	7,614.53	0.00	0.00	0.00	
16,100.00	88.74	90.81	7,237.25	790.67	7,674.78	7,714.03	0.00	0.00	0.00	
16,200.00	88.74	90.81	7,239.45	789.26	7,774.74	7,813.52	0.00	0.00	0.00	
16,300.00	88.74	90.81	7,241.65	787.85	7,874.71	7,913.02	0.00	0.00	0.00	
16,400.00	88.74	90.81	7,243.84	786.44	7,974.68	8,012.52	0.00	0.00	0.00	
16,500.00	88.74	90.81	7,246.04	785.03	8,074.64	8,112.01	0.00	0.00	0.00	
16,600.00	88.74	90.81	7,248.24	783.61	8,174.61	8,211.51	0.00	0.00	0.00	
16,700.00	88.74	90.81	7,250.44	782.20	8,274.57	8,311.01	0.00	0.00	0.00	
16,800.00	88.74	90.81	7,252.64	780.79	8,374.54	8,410.51	0.00	0.00	0.00	
16,900.00	88.74	90.81	7,254.84	779.38	8,474.51	8,510.00	0.00	0.00	0.00	
17,000.00	88.74	90.81	7,257.04	777.97	8,574.47	8,609.50	0.00	0.00	0.00	
17,100.00	88.74	90.81	7,259.24	776.56	8,674.44	8,709.00	0.00	0.00	0.00	
17,200.00	88.74	90.81	7,261.44	775.15	8,774.40	8,808.49	0.00	0.00	0.00	
17,300.00	88.74	90.81	7,263.64	773.73	8,874.37	8,907.99	0.00	0.00	0.00	
17,400.00	88.74	90.81	7,265.84	772.32	8,974.34	9,007.49	0.00	0.00	0.00	
17,500.00	88.74	90.81	7,268.04	770.91	9,074.30	9,106.98	0.00	0.00	0.00	
17,589.36	88.74	90.81	7,270.00	769.65	9,163.63	9,195.90	0.00	0.00	0.00	
TD Well @ 17589.36ft										

Casing Points						
Measured Depth (usft)	Vertical Depth (usft)	Name			Casing Diameter (")	Hole Diameter (")
1,788.61	1,750.00	9 5/8"			9-5/8	13-1/2
7,627.79	7,051.00	5 1/2"			5-1/2	8-1/2



# Hewlett-Packard

## Planning Report

<b>Database:</b>	EDM 5000.14 Single User Db	<b>Local Co-ordinate Reference:</b>	Well BOST FARM 1N-8C-L
<b>Company:</b>	SRC ENERGY	<b>TVD Reference:</b>	RKB = 20' @ 4901.00usft (PD 462)
<b>Project:</b>	WELD COUNTY (NAD83, TRUE NORTH)	<b>MD Reference:</b>	RKB = 20' @ 4901.00usft (PD 462)
<b>Site:</b>	5N-66W-07 BOST FARM 5-7 PAD	<b>North Reference:</b>	True
<b>Well:</b>	BOST FARM 1N-8C-L	<b>Survey Calculation Method:</b>	Minimum Curvature
<b>Wellbore:</b>	Wellbore #1		
<b>Design:</b>	Design #1		

Plan Annotations				
Measured Depth (usft)	Vertical Depth (usft)	Local Coordinates		Comment
		+N/-S (usft)	+E/-W (usft)	
250.00	250.00	0.00	0.00	Begin Nudge @ 250.00ft
1,045.00	1,034.84	53.30	-95.77	End Nudge @ 1045.00ft
6,487.99	6,269.58	778.51	-1,398.70	KOP @ 6487.99ft :: DLS = 9°/100'
7,627.79	7,051.00	886.57	-794.67	End Build @ 7627.79ft
9,003.08	7,081.18	890.43	580.28	Begin Turn to BHL @ 9003.08ft
9,051.55	7,082.24	890.16	628.74	End Turn @ 9051.55ft
17,589.36	7,270.00	769.65	9,163.63	TD Well @ 17589.36ft