

SRC ENERGY

WELD COUNTY (NAD83, TRUE NORTH)

5N-66W-07 BOST FARM 5-7 PAD

BOST FARM 41N-8B-L

Wellbore #1

Plan: Design #1

Standard Planning Report

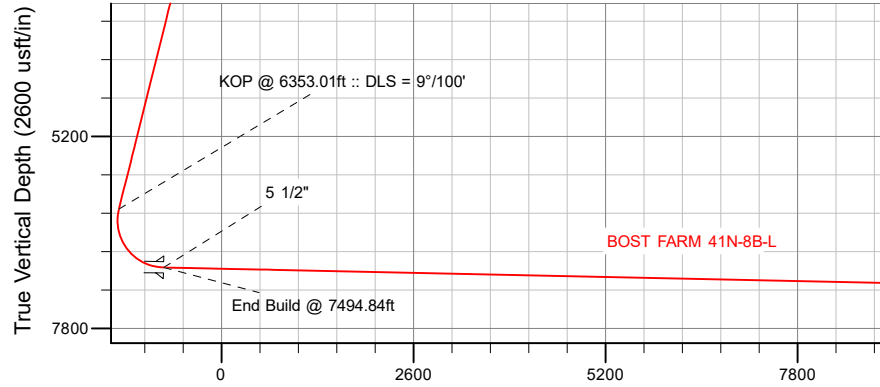
28 December, 2017

Project: WELD COUNTY (NAD83, TRUE NORTH)
Site: 5N-66W-07 BOST FARM 5-7 PAD
Well: BOST FARM 41N-8B-L
Wellbore: Wellbore #1
Design: Design #1

SRC ENERGY

CASING DETAILS

TVD	MD	Name	Size
1750.00	1781.65	9 5/8"	9-5/8
6976.00	7494.84	5 1/2"	5-1/2



Vertical Section at 90.31° (2600 usft/in)

West(-)/East(+) (1600 usft/in)

SECTION DETAILS

Sec	MD	Inc	Azi	TVD	+N/-S	+E/-W	Dleg	TFace	VSec	Target
1	0.00	0.00	0.00	0.00	0.00	0.00	0.00	0.00	0.00	
2	250.00	0.00	0.00	250.00	0.00	0.00	0.00	0.00	0.00	
3	950.00	14.00	268.70	943.06	-1.93	-85.07	2.00	268.70	-85.06	
4	6353.01	14.00	268.70	6185.57	-31.59	-1391.84	0.00	0.00	-1391.65	
5	7494.84	88.77	90.08	6976.00	-37.03	-787.81	9.00	-178.59	-787.59	
6	17455.61	88.77	90.08	7190.00	-50.38	9170.65	0.00	0.00	9170.79	BOST FARM 41N-8B-L_BHL

WELLBORE TARGET DETAILS (LAT/LONG)

Name	TVD	+N/-S	+E/-W	Latitude	Longitude
BOST FARM 41N-8B-L_SHL	0.00	0.00	0.00	40.417647	-104.829012
BOST FARM 41N-8B-L_BHL	7190.00	-50.38	9170.65	40.417504	-104.796076

WELL DETAILS: BOST FARM 41N-8B-L

GL = 4881'

RKB = 20' @ 4901.00usft (PD 462)

Plan: Design #1 (BOST FARM 41N-8B-L/Wellbore #1)

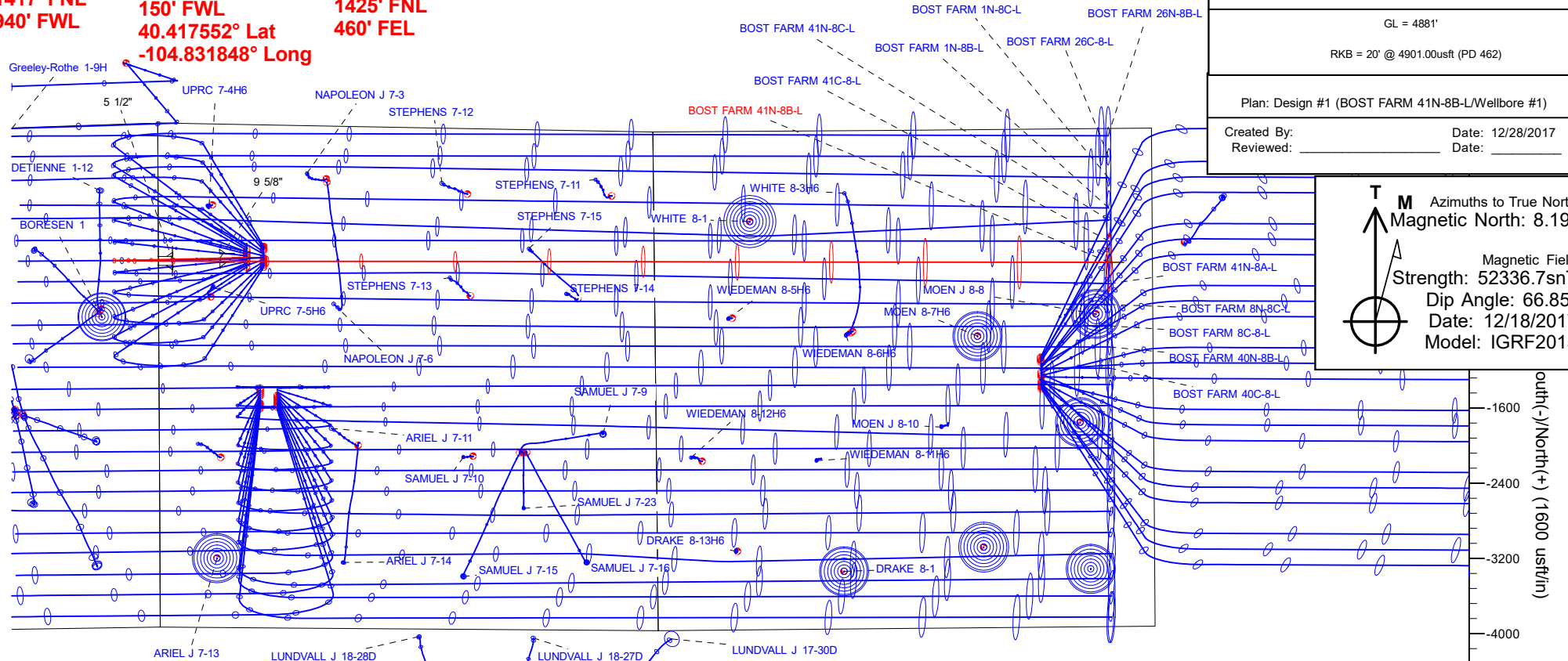
Created By: _____ Date: 12/28/2017
Reviewed: _____ Date: _____

T Azimuths to True North
M Magnetic North: 8.19°
Magnetic Field
Strength: 52336.7snT
Dip Angle: 66.85°
Date: 12/18/2017
Model: IGRF2015

SHL
1417' FNL
940' FWL

LP
1466' FNL
150' FWL
40.417552° Lat
-104.831848° Long

BHL
1425' FNL
460' FEL



Hewlett-Packard

Planning Report

Database:	EDM 5000.14 Single User Db	Local Co-ordinate Reference:	Well BOST FARM 41N-8B-L
Company:	SRC ENERGY	TVD Reference:	RKB = 20' @ 4901.00usft (PD 462)
Project:	WELD COUNTY (NAD83, TRUE NORTH)	MD Reference:	RKB = 20' @ 4901.00usft (PD 462)
Site:	5N-66W-07 BOST FARM 5-7 PAD	North Reference:	True
Well:	BOST FARM 41N-8B-L	Survey Calculation Method:	Minimum Curvature
Wellbore:	Wellbore #1		
Design:	Design #1		

Project	WELD COUNTY (NAD83, TRUE NORTH)		
Map System:	US State Plane 1983	System Datum:	Mean Sea Level
Geo Datum:	North American Datum 1983		
Map Zone:	Colorado Northern Zone		

Site	5N-66W-07 BOST FARM 5-7 PAD			
Site Position:		Northing:	1,395,815.76 usft	Latitude: 40.417972
From:	Lat/Long	Easting:	3,187,006.76 usft	Longitude: -104.828362
Position Uncertainty:	0.00 usft	Slot Radius:	13-3/16 "	Grid Convergence: 0.43 °

Well	BOST FARM 41N-8B-L			
Well Position	+N/-S	-118.40 usft	Northing:	1,395,695.99 usft
	+E/-W	-180.98 usft	Easting:	3,186,826.68 usft
Position Uncertainty		3.28 usft	Wellhead Elevation:	Latitude: 40.417647
				Longitude: -104.829012
				Ground Level: 4,881.00 usft

Wellbore	Wellbore #1				
Magnetics	Model Name	Sample Date	Declination (°)	Dip Angle (°)	Field Strength (nT)
	IGRF2015	12/18/2017	8.19	66.85	52,336.70185634

Design	Design #1			
Audit Notes:				
Version:	Phase:	PLAN	Tie On Depth:	0.00
Vertical Section:	Depth From (TVD) (usft)	+N/-S (usft)	+E/-W (usft)	Direction (°)
	0.00	0.00	0.00	90.31

Plan Survey Tool Program	Date	12/28/2017		
Depth From (usft)	Depth To (usft)	Survey (Wellbore)	Tool Name	Remarks
1	0.00	1,750.00	Design #1 (Wellbore #1)	SRC Energy_ISCWSA REV 2
				Fixed:v2:crustal field declinatio
2	1,750.00	17,455.61	Design #1 (Wellbore #1)	SRC Energy_ISCWSA REV 2
				Fixed:v2:crustal field declinatio

Plan Sections										
Measured Depth (usft)	Inclination (°)	Azimuth (°)	Vertical Depth (usft)	+N/-S (usft)	+E/-W (usft)	Dogleg Rate (°/100usft)	Build Rate (°/100usft)	Turn Rate (°/100usft)	TFO (°)	Target
0.00	0.00	0.00	0.00	0.00	0.00	0.00	0.00	0.00	0.00	
250.00	0.00	0.00	250.00	0.00	0.00	0.00	0.00	0.00	0.00	
950.00	14.00	268.70	943.06	-1.93	-85.07	2.00	2.00	0.00	268.70	
6,353.01	14.00	268.70	6,185.57	-31.59	-1,391.84	0.00	0.00	0.00	0.00	
7,494.84	88.77	90.08	6,976.00	-37.03	-787.81	9.00	6.55	-15.64	-178.59	
17,455.61	88.77	90.08	7,190.00	-50.38	9,170.65	0.00	0.00	0.00	0.00	BOST FARM 41N-8B-

Hewlett-Packard

Planning Report

Database:	EDM 5000.14 Single User Db	Local Co-ordinate Reference:	Well BOST FARM 41N-8B-L
Company:	SRC ENERGY	TVD Reference:	RKB = 20' @ 4901.00usft (PD 462)
Project:	WELD COUNTY (NAD83, TRUE NORTH)	MD Reference:	RKB = 20' @ 4901.00usft (PD 462)
Site:	5N-66W-07 BOST FARM 5-7 PAD	North Reference:	True
Well:	BOST FARM 41N-8B-L	Survey Calculation Method:	Minimum Curvature
Wellbore:	Wellbore #1		
Design:	Design #1		

Planned Survey									
Measured Depth (usft)	Inclination (°)	Azimuth (°)	Vertical Depth (usft)	+N/-S (usft)	+E/-W (usft)	Vertical Section (usft)	Dogleg Rate (°/100usft)	Build Rate (°/100usft)	Turn Rate (°/100usft)
0.00	0.00	0.00	0.00	0.00	0.00	0.00	0.00	0.00	0.00
100.00	0.00	0.00	100.00	0.00	0.00	0.00	0.00	0.00	0.00
200.00	0.00	0.00	200.00	0.00	0.00	0.00	0.00	0.00	0.00
250.00	0.00	0.00	250.00	0.00	0.00	0.00	0.00	0.00	0.00
Begin Nudge @ 250.00ft									
300.00	1.00	268.70	300.00	-0.01	-0.44	-0.44	2.00	2.00	0.00
400.00	3.00	268.70	399.93	-0.09	-3.93	-3.92	2.00	2.00	0.00
500.00	5.00	268.70	499.68	-0.25	-10.90	-10.90	2.00	2.00	0.00
600.00	7.00	268.70	599.13	-0.48	-21.35	-21.35	2.00	2.00	0.00
700.00	9.00	268.70	698.15	-0.80	-35.26	-35.26	2.00	2.00	0.00
800.00	11.00	268.70	796.63	-1.19	-52.62	-52.61	2.00	2.00	0.00
900.00	13.00	268.70	894.44	-1.67	-73.41	-73.40	2.00	2.00	0.00
950.00	14.00	268.70	943.06	-1.93	-85.07	-85.06	2.00	2.00	0.00
End Nudge @ 950.00ft									
1,000.00	14.00	268.70	991.57	-2.21	-97.17	-97.15	0.00	0.00	0.00
1,100.00	14.00	268.70	1,088.60	-2.75	-121.35	-121.34	0.00	0.00	0.00
1,200.00	14.00	268.70	1,185.63	-3.30	-145.54	-145.52	0.00	0.00	0.00
1,300.00	14.00	268.70	1,282.66	-3.85	-169.73	-169.70	0.00	0.00	0.00
1,400.00	14.00	268.70	1,379.69	-4.40	-193.91	-193.88	0.00	0.00	0.00
1,500.00	14.00	268.70	1,476.72	-4.95	-218.10	-218.07	0.00	0.00	0.00
1,600.00	14.00	268.70	1,573.75	-5.50	-242.28	-242.25	0.00	0.00	0.00
1,700.00	14.00	268.70	1,670.78	-6.05	-266.47	-266.43	0.00	0.00	0.00
1,781.65	14.00	268.70	1,750.00	-6.50	-286.22	-286.18	0.00	0.00	0.00
9 5/8"									
1,800.00	14.00	268.70	1,767.81	-6.60	-290.66	-290.61	0.00	0.00	0.00
1,900.00	14.00	268.70	1,864.84	-7.14	-314.84	-314.80	0.00	0.00	0.00
2,000.00	14.00	268.70	1,961.87	-7.69	-339.03	-338.98	0.00	0.00	0.00
2,100.00	14.00	268.70	2,058.90	-8.24	-363.21	-363.16	0.00	0.00	0.00
2,200.00	14.00	268.70	2,155.92	-8.79	-387.40	-387.34	0.00	0.00	0.00
2,300.00	14.00	268.70	2,252.95	-9.34	-411.59	-411.53	0.00	0.00	0.00
2,400.00	14.00	268.70	2,349.98	-9.89	-435.77	-435.71	0.00	0.00	0.00
2,500.00	14.00	268.70	2,447.01	-10.44	-459.96	-459.89	0.00	0.00	0.00
2,600.00	14.00	268.70	2,544.04	-10.99	-484.14	-484.08	0.00	0.00	0.00
2,700.00	14.00	268.70	2,641.07	-11.54	-508.33	-508.26	0.00	0.00	0.00
2,800.00	14.00	268.70	2,738.10	-12.08	-532.51	-532.44	0.00	0.00	0.00
2,900.00	14.00	268.70	2,835.13	-12.63	-556.70	-556.62	0.00	0.00	0.00
3,000.00	14.00	268.70	2,932.16	-13.18	-580.89	-580.81	0.00	0.00	0.00
3,100.00	14.00	268.70	3,029.19	-13.73	-605.07	-604.99	0.00	0.00	0.00
3,200.00	14.00	268.70	3,126.22	-14.28	-629.26	-629.17	0.00	0.00	0.00
3,300.00	14.00	268.70	3,223.25	-14.83	-653.44	-653.35	0.00	0.00	0.00
3,400.00	14.00	268.70	3,320.28	-15.38	-677.63	-677.54	0.00	0.00	0.00
3,500.00	14.00	268.70	3,417.31	-15.93	-701.82	-701.72	0.00	0.00	0.00
3,600.00	14.00	268.70	3,514.34	-16.48	-726.00	-725.90	0.00	0.00	0.00
3,700.00	14.00	268.70	3,611.37	-17.02	-750.19	-750.08	0.00	0.00	0.00
3,800.00	14.00	268.70	3,708.40	-17.57	-774.37	-774.27	0.00	0.00	0.00
3,900.00	14.00	268.70	3,805.43	-18.12	-798.56	-798.45	0.00	0.00	0.00
4,000.00	14.00	268.70	3,902.46	-18.67	-822.75	-822.63	0.00	0.00	0.00
4,100.00	14.00	268.70	3,999.49	-19.22	-846.93	-846.81	0.00	0.00	0.00
4,200.00	14.00	268.70	4,096.52	-19.77	-871.12	-871.00	0.00	0.00	0.00
4,300.00	14.00	268.70	4,193.55	-20.32	-895.30	-895.18	0.00	0.00	0.00
4,400.00	14.00	268.70	4,290.58	-20.87	-919.49	-919.36	0.00	0.00	0.00
4,500.00	14.00	268.70	4,387.61	-21.42	-943.68	-943.54	0.00	0.00	0.00
4,600.00	14.00	268.70	4,484.63	-21.96	-967.86	-967.73	0.00	0.00	0.00

Hewlett-Packard

Planning Report

Database:	EDM 5000.14 Single User Db	Local Co-ordinate Reference:	Well BOST FARM 41N-8B-L
Company:	SRC ENERGY	TVD Reference:	RKB = 20' @ 4901.00usft (PD 462)
Project:	WELD COUNTY (NAD83, TRUE NORTH)	MD Reference:	RKB = 20' @ 4901.00usft (PD 462)
Site:	5N-66W-07 BOST FARM 5-7 PAD	North Reference:	True
Well:	BOST FARM 41N-8B-L	Survey Calculation Method:	Minimum Curvature
Wellbore:	Wellbore #1		
Design:	Design #1		

Planned Survey									
Measured Depth (usft)	Inclination (°)	Azimuth (°)	Vertical Depth (usft)	+N/-S (usft)	+E/-W (usft)	Vertical Section (usft)	Dogleg Rate (°/100usft)	Build Rate (°/100usft)	Turn Rate (°/100usft)
4,700.00	14.00	268.70	4,581.66	-22.51	-992.05	-991.91	0.00	0.00	0.00
4,800.00	14.00	268.70	4,678.69	-23.06	-1,016.23	-1,016.09	0.00	0.00	0.00
4,900.00	14.00	268.70	4,775.72	-23.61	-1,040.42	-1,040.27	0.00	0.00	0.00
5,000.00	14.00	268.70	4,872.75	-24.16	-1,064.61	-1,064.46	0.00	0.00	0.00
5,100.00	14.00	268.70	4,969.78	-24.71	-1,088.79	-1,088.64	0.00	0.00	0.00
5,200.00	14.00	268.70	5,066.81	-25.26	-1,112.98	-1,112.82	0.00	0.00	0.00
5,300.00	14.00	268.70	5,163.84	-25.81	-1,137.16	-1,137.01	0.00	0.00	0.00
5,400.00	14.00	268.70	5,260.87	-26.35	-1,161.35	-1,161.19	0.00	0.00	0.00
5,500.00	14.00	268.70	5,357.90	-26.90	-1,185.54	-1,185.37	0.00	0.00	0.00
5,600.00	14.00	268.70	5,454.93	-27.45	-1,209.72	-1,209.55	0.00	0.00	0.00
5,700.00	14.00	268.70	5,551.96	-28.00	-1,233.91	-1,233.74	0.00	0.00	0.00
5,800.00	14.00	268.70	5,648.99	-28.55	-1,258.09	-1,257.92	0.00	0.00	0.00
5,900.00	14.00	268.70	5,746.02	-29.10	-1,282.28	-1,282.10	0.00	0.00	0.00
6,000.00	14.00	268.70	5,843.05	-29.65	-1,306.47	-1,306.28	0.00	0.00	0.00
6,100.00	14.00	268.70	5,940.08	-30.20	-1,330.65	-1,330.47	0.00	0.00	0.00
6,200.00	14.00	268.70	6,037.11	-30.75	-1,354.84	-1,354.65	0.00	0.00	0.00
6,300.00	14.00	268.70	6,134.14	-31.29	-1,379.02	-1,378.83	0.00	0.00	0.00
6,353.01	14.00	268.70	6,185.57	-31.59	-1,391.84	-1,391.65	0.00	0.00	0.00
KOP @ 6353.01ft :: DLS = 9°/100'									
6,400.00	9.77	268.09	6,231.54	-31.85	-1,401.52	-1,401.32	9.00	-9.00	-1.30
6,450.00	5.28	266.37	6,281.10	-32.13	-1,408.06	-1,407.86	9.00	-8.99	-3.43
6,500.00	0.84	246.07	6,331.02	-32.43	-1,410.69	-1,410.49	9.00	-8.88	-40.60
6,550.00	3.75	95.29	6,380.99	-32.73	-1,409.39	-1,409.19	9.00	5.82	-301.57
6,600.00	8.24	92.43	6,430.70	-33.03	-1,404.18	-1,403.98	9.00	8.98	-5.72
6,650.00	12.74	91.58	6,479.85	-33.34	-1,395.09	-1,394.89	9.00	8.99	-1.70
6,700.00	17.24	91.17	6,528.14	-33.64	-1,382.17	-1,381.96	9.00	9.00	-0.82
6,750.00	21.74	90.93	6,575.26	-33.94	-1,365.49	-1,365.29	9.00	9.00	-0.49
6,800.00	26.24	90.76	6,620.94	-34.24	-1,345.18	-1,344.97	9.00	9.00	-0.33
6,850.00	30.73	90.64	6,664.87	-34.53	-1,321.34	-1,321.13	9.00	9.00	-0.24
6,900.00	35.23	90.55	6,706.80	-34.81	-1,294.13	-1,293.92	9.00	9.00	-0.18
6,950.00	39.73	90.48	6,746.47	-35.08	-1,263.71	-1,263.50	9.00	9.00	-0.15
7,000.00	44.23	90.42	6,783.62	-35.35	-1,230.27	-1,230.06	9.00	9.00	-0.12
7,050.00	48.73	90.37	6,818.04	-35.59	-1,194.02	-1,193.81	9.00	9.00	-0.10
7,100.00	53.23	90.32	6,849.51	-35.83	-1,155.18	-1,154.97	9.00	9.00	-0.09
7,150.00	57.73	90.29	6,877.84	-36.05	-1,114.00	-1,113.78	9.00	9.00	-0.08
7,200.00	62.23	90.25	6,902.84	-36.25	-1,070.71	-1,070.50	9.00	9.00	-0.07
7,250.00	66.73	90.22	6,924.37	-36.43	-1,025.60	-1,025.39	9.00	9.00	-0.07
7,300.00	71.23	90.19	6,942.30	-36.60	-978.94	-978.73	9.00	9.00	-0.06
7,350.00	75.73	90.16	6,956.51	-36.74	-931.02	-930.80	9.00	9.00	-0.06
7,400.00	80.23	90.13	6,966.92	-36.86	-882.13	-881.91	9.00	9.00	-0.06
7,450.00	84.73	90.10	6,973.46	-36.96	-832.57	-832.35	9.00	9.00	-0.05
7,494.84	88.77	90.08	6,976.00	-37.03	-787.81	-787.59	9.00	9.00	-0.05
End Build @ 7494.84ft - 5 1/2"									
7,500.00	88.77	90.08	6,976.11	-37.04	-782.65	-782.44	0.00	0.00	0.00
7,600.00	88.77	90.08	6,978.26	-37.17	-682.67	-682.46	0.00	0.00	0.00
7,700.00	88.77	90.08	6,980.41	-37.30	-582.70	-582.48	0.00	0.00	0.00
7,800.00	88.77	90.08	6,982.56	-37.44	-482.72	-482.51	0.00	0.00	0.00
7,900.00	88.77	90.08	6,984.70	-37.57	-382.74	-382.53	0.00	0.00	0.00
8,000.00	88.77	90.08	6,986.85	-37.71	-282.77	-282.56	0.00	0.00	0.00
8,100.00	88.77	90.08	6,989.00	-37.84	-182.79	-182.58	0.00	0.00	0.00
8,200.00	88.77	90.08	6,991.15	-37.97	-82.81	-82.60	0.00	0.00	0.00
8,300.00	88.77	90.08	6,993.30	-38.11	17.16	17.37	0.00	0.00	0.00
8,400.00	88.77	90.08	6,995.45	-38.24	117.14	117.35	0.00	0.00	0.00
8,500.00	88.77	90.08	6,997.60	-38.38	217.12	217.33	0.00	0.00	0.00

Hewlett-Packard

Planning Report

Database:	EDM 5000.14 Single User Db	Local Co-ordinate Reference:	Well BOST FARM 41N-8B-L
Company:	SRC ENERGY	TVD Reference:	RKB = 20' @ 4901.00usft (PD 462)
Project:	WELD COUNTY (NAD83, TRUE NORTH)	MD Reference:	RKB = 20' @ 4901.00usft (PD 462)
Site:	5N-66W-07 BOST FARM 5-7 PAD	North Reference:	True
Well:	BOST FARM 41N-8B-L	Survey Calculation Method:	Minimum Curvature
Wellbore:	Wellbore #1		
Design:	Design #1		

Planned Survey										
Measured Depth (usft)	Inclination (°)	Azimuth (°)	Vertical Depth (usft)	+N/-S (usft)	+E/-W (usft)	Vertical Section (usft)	Dogleg Rate (°/100usft)	Build Rate (°/100usft)	Turn Rate (°/100usft)	
8,600.00	88.77	90.08	6,999.74	-38.51	317.09	317.30	0.00	0.00	0.00	
8,700.00	88.77	90.08	7,001.89	-38.64	417.07	417.28	0.00	0.00	0.00	
8,800.00	88.77	90.08	7,004.04	-38.78	517.05	517.25	0.00	0.00	0.00	
8,900.00	88.77	90.08	7,006.19	-38.91	617.02	617.23	0.00	0.00	0.00	
9,000.00	88.77	90.08	7,008.34	-39.05	717.00	717.21	0.00	0.00	0.00	
9,100.00	88.77	90.08	7,010.49	-39.18	816.98	817.18	0.00	0.00	0.00	
9,200.00	88.77	90.08	7,012.63	-39.31	916.96	917.16	0.00	0.00	0.00	
9,300.00	88.77	90.08	7,014.78	-39.45	1,016.93	1,017.13	0.00	0.00	0.00	
9,400.00	88.77	90.08	7,016.93	-39.58	1,116.91	1,117.11	0.00	0.00	0.00	
9,500.00	88.77	90.08	7,019.08	-39.72	1,216.89	1,217.09	0.00	0.00	0.00	
9,600.00	88.77	90.08	7,021.23	-39.85	1,316.86	1,317.06	0.00	0.00	0.00	
9,700.00	88.77	90.08	7,023.38	-39.98	1,416.84	1,417.04	0.00	0.00	0.00	
9,800.00	88.77	90.08	7,025.52	-40.12	1,516.82	1,517.01	0.00	0.00	0.00	
9,900.00	88.77	90.08	7,027.67	-40.25	1,616.79	1,616.99	0.00	0.00	0.00	
10,000.00	88.77	90.08	7,029.82	-40.39	1,716.77	1,716.97	0.00	0.00	0.00	
10,100.00	88.77	90.08	7,031.97	-40.52	1,816.75	1,816.94	0.00	0.00	0.00	
10,200.00	88.77	90.08	7,034.12	-40.66	1,916.72	1,916.92	0.00	0.00	0.00	
10,300.00	88.77	90.08	7,036.27	-40.79	2,016.70	2,016.89	0.00	0.00	0.00	
10,400.00	88.77	90.08	7,038.42	-40.92	2,116.68	2,116.87	0.00	0.00	0.00	
10,500.00	88.77	90.08	7,040.56	-41.06	2,216.65	2,216.85	0.00	0.00	0.00	
10,600.00	88.77	90.08	7,042.71	-41.19	2,316.63	2,316.82	0.00	0.00	0.00	
10,700.00	88.77	90.08	7,044.86	-41.33	2,416.61	2,416.80	0.00	0.00	0.00	
10,800.00	88.77	90.08	7,047.01	-41.46	2,516.58	2,516.77	0.00	0.00	0.00	
10,900.00	88.77	90.08	7,049.16	-41.59	2,616.56	2,616.75	0.00	0.00	0.00	
11,000.00	88.77	90.08	7,051.31	-41.73	2,716.54	2,716.73	0.00	0.00	0.00	
11,100.00	88.77	90.08	7,053.45	-41.86	2,816.52	2,816.70	0.00	0.00	0.00	
11,200.00	88.77	90.08	7,055.60	-42.00	2,916.49	2,916.68	0.00	0.00	0.00	
11,300.00	88.77	90.08	7,057.75	-42.13	3,016.47	3,016.65	0.00	0.00	0.00	
11,400.00	88.77	90.08	7,059.90	-42.26	3,116.45	3,116.63	0.00	0.00	0.00	
11,500.00	88.77	90.08	7,062.05	-42.40	3,216.42	3,216.61	0.00	0.00	0.00	
11,600.00	88.77	90.08	7,064.20	-42.53	3,316.40	3,316.58	0.00	0.00	0.00	
11,700.00	88.77	90.08	7,066.34	-42.67	3,416.38	3,416.56	0.00	0.00	0.00	
11,800.00	88.77	90.08	7,068.49	-42.80	3,516.35	3,516.54	0.00	0.00	0.00	
11,900.00	88.77	90.08	7,070.64	-42.93	3,616.33	3,616.51	0.00	0.00	0.00	
12,000.00	88.77	90.08	7,072.79	-43.07	3,716.31	3,716.49	0.00	0.00	0.00	
12,100.00	88.77	90.08	7,074.94	-43.20	3,816.28	3,816.46	0.00	0.00	0.00	
12,200.00	88.77	90.08	7,077.09	-43.34	3,916.26	3,916.44	0.00	0.00	0.00	
12,300.00	88.77	90.08	7,079.24	-43.47	4,016.24	4,016.42	0.00	0.00	0.00	
12,400.00	88.77	90.08	7,081.38	-43.60	4,116.21	4,116.39	0.00	0.00	0.00	
12,500.00	88.77	90.08	7,083.53	-43.74	4,216.19	4,216.37	0.00	0.00	0.00	
12,600.00	88.77	90.08	7,085.68	-43.87	4,316.17	4,316.34	0.00	0.00	0.00	
12,700.00	88.77	90.08	7,087.83	-44.01	4,416.14	4,416.32	0.00	0.00	0.00	
12,800.00	88.77	90.08	7,089.98	-44.14	4,516.12	4,516.30	0.00	0.00	0.00	
12,900.00	88.77	90.08	7,092.13	-44.28	4,616.10	4,616.27	0.00	0.00	0.00	
13,000.00	88.77	90.08	7,094.27	-44.41	4,716.08	4,716.25	0.00	0.00	0.00	
13,100.00	88.77	90.08	7,096.42	-44.54	4,816.05	4,816.22	0.00	0.00	0.00	
13,200.00	88.77	90.08	7,098.57	-44.68	4,916.03	4,916.20	0.00	0.00	0.00	
13,300.00	88.77	90.08	7,100.72	-44.81	5,016.01	5,016.18	0.00	0.00	0.00	
13,400.00	88.77	90.08	7,102.87	-44.95	5,115.98	5,116.15	0.00	0.00	0.00	
13,500.00	88.77	90.08	7,105.02	-45.08	5,215.96	5,216.13	0.00	0.00	0.00	
13,600.00	88.77	90.08	7,107.17	-45.21	5,315.94	5,316.10	0.00	0.00	0.00	
13,700.00	88.77	90.08	7,109.31	-45.35	5,415.91	5,416.08	0.00	0.00	0.00	
13,800.00	88.77	90.08	7,111.46	-45.48	5,515.89	5,516.06	0.00	0.00	0.00	
13,900.00	88.77	90.08	7,113.61	-45.62	5,615.87	5,616.03	0.00	0.00	0.00	

Hewlett-Packard

Planning Report

Database:	EDM 5000.14 Single User Db	Local Co-ordinate Reference:	Well BOST FARM 41N-8B-L
Company:	SRC ENERGY	TVD Reference:	RKB = 20' @ 4901.00usft (PD 462)
Project:	WELD COUNTY (NAD83, TRUE NORTH)	MD Reference:	RKB = 20' @ 4901.00usft (PD 462)
Site:	5N-66W-07 BOST FARM 5-7 PAD	North Reference:	True
Well:	BOST FARM 41N-8B-L	Survey Calculation Method:	Minimum Curvature
Wellbore:	Wellbore #1		
Design:	Design #1		

Planned Survey										
Measured Depth (usft)	Inclination (°)	Azimuth (°)	Vertical Depth (usft)	+N/-S (usft)	+E/-W (usft)	Vertical Section (usft)	Dogleg Rate (°/100usft)	Build Rate (°/100usft)	Turn Rate (°/100usft)	
14,000.00	88.77	90.08	7,115.76	-45.75	5,715.84	5,716.01	0.00	0.00	0.00	
14,100.00	88.77	90.08	7,117.91	-45.88	5,815.82	5,815.98	0.00	0.00	0.00	
14,200.00	88.77	90.08	7,120.06	-46.02	5,915.80	5,915.96	0.00	0.00	0.00	
14,300.00	88.77	90.08	7,122.20	-46.15	6,015.77	6,015.94	0.00	0.00	0.00	
14,400.00	88.77	90.08	7,124.35	-46.29	6,115.75	6,115.91	0.00	0.00	0.00	
14,500.00	88.77	90.08	7,126.50	-46.42	6,215.73	6,215.89	0.00	0.00	0.00	
14,600.00	88.77	90.08	7,128.65	-46.55	6,315.70	6,315.86	0.00	0.00	0.00	
14,700.00	88.77	90.08	7,130.80	-46.69	6,415.68	6,415.84	0.00	0.00	0.00	
14,800.00	88.77	90.08	7,132.95	-46.82	6,515.66	6,515.82	0.00	0.00	0.00	
14,900.00	88.77	90.08	7,135.09	-46.96	6,615.63	6,615.79	0.00	0.00	0.00	
15,000.00	88.77	90.08	7,137.24	-47.09	6,715.61	6,715.77	0.00	0.00	0.00	
15,100.00	88.77	90.08	7,139.39	-47.23	6,815.59	6,815.75	0.00	0.00	0.00	
15,200.00	88.77	90.08	7,141.54	-47.36	6,915.57	6,915.72	0.00	0.00	0.00	
15,300.00	88.77	90.08	7,143.69	-47.49	7,015.54	7,015.70	0.00	0.00	0.00	
15,400.00	88.77	90.08	7,145.84	-47.63	7,115.52	7,115.67	0.00	0.00	0.00	
15,500.00	88.77	90.08	7,147.99	-47.76	7,215.50	7,215.65	0.00	0.00	0.00	
15,600.00	88.77	90.08	7,150.13	-47.90	7,315.47	7,315.63	0.00	0.00	0.00	
15,700.00	88.77	90.08	7,152.28	-48.03	7,415.45	7,415.60	0.00	0.00	0.00	
15,800.00	88.77	90.08	7,154.43	-48.16	7,515.43	7,515.58	0.00	0.00	0.00	
15,900.00	88.77	90.08	7,156.58	-48.30	7,615.40	7,615.55	0.00	0.00	0.00	
16,000.00	88.77	90.08	7,158.73	-48.43	7,715.38	7,715.53	0.00	0.00	0.00	
16,100.00	88.77	90.08	7,160.88	-48.57	7,815.36	7,815.51	0.00	0.00	0.00	
16,200.00	88.77	90.08	7,163.02	-48.70	7,915.33	7,915.48	0.00	0.00	0.00	
16,300.00	88.77	90.08	7,165.17	-48.83	8,015.31	8,015.46	0.00	0.00	0.00	
16,400.00	88.77	90.08	7,167.32	-48.97	8,115.29	8,115.43	0.00	0.00	0.00	
16,500.00	88.77	90.08	7,169.47	-49.10	8,215.26	8,215.41	0.00	0.00	0.00	
16,600.00	88.77	90.08	7,171.62	-49.24	8,315.24	8,315.39	0.00	0.00	0.00	
16,700.00	88.77	90.08	7,173.77	-49.37	8,415.22	8,415.36	0.00	0.00	0.00	
16,800.00	88.77	90.08	7,175.91	-49.50	8,515.19	8,515.34	0.00	0.00	0.00	
16,900.00	88.77	90.08	7,178.06	-49.64	8,615.17	8,615.31	0.00	0.00	0.00	
17,000.00	88.77	90.08	7,180.21	-49.77	8,715.15	8,715.29	0.00	0.00	0.00	
17,100.00	88.77	90.08	7,182.36	-49.91	8,815.13	8,815.27	0.00	0.00	0.00	
17,200.00	88.77	90.08	7,184.51	-50.04	8,915.10	8,915.24	0.00	0.00	0.00	
17,300.00	88.77	90.08	7,186.66	-50.17	9,015.08	9,015.22	0.00	0.00	0.00	
17,400.00	88.77	90.08	7,188.81	-50.31	9,115.06	9,115.19	0.00	0.00	0.00	
17,455.61	88.77	90.08	7,190.00	-50.38	9,170.65	9,170.79	0.00	0.00	0.00	
TD Well @ 17455.61ft										

Casing Points					
Measured Depth (usft)	Vertical Depth (usft)	Name		Casing Diameter (")	Hole Diameter (")
1,781.65	1,750.00	9 5/8"		9-5/8	13-1/2
7,494.84	6,976.00	5 1/2"		5-1/2	8-1/2

Hewlett-Packard

Planning Report

Database:	EDM 5000.14 Single User Db	Local Co-ordinate Reference:	Well BOST FARM 41N-8B-L
Company:	SRC ENERGY	TVD Reference:	RKB = 20' @ 4901.00usft (PD 462)
Project:	WELD COUNTY (NAD83, TRUE NORTH)	MD Reference:	RKB = 20' @ 4901.00usft (PD 462)
Site:	5N-66W-07 BOST FARM 5-7 PAD	North Reference:	True
Well:	BOST FARM 41N-8B-L	Survey Calculation Method:	Minimum Curvature
Wellbore:	Wellbore #1		
Design:	Design #1		

Plan Annotations				
Measured Depth (usft)	Vertical Depth (usft)	Local Coordinates		Comment
		+N/-S (usft)	+E/-W (usft)	
250.00	250.00	0.00	0.00	Begin Nudge @ 250.00ft
950.00	943.06	-1.93	-85.07	End Nudge @ 950.00ft
6,353.01	6,185.57	-31.59	-1,391.84	KOP @ 6353.01ft :: DLS = 9°/100'
7,494.84	6,976.00	-37.03	-787.81	End Build @ 7494.84ft
17,455.61	7,190.00	-50.38	9,170.65	TD Well @ 17455.61ft