

SRC ENERGY

WELD COUNTY (NAD83, TRUE NORTH)

5N-66W-07 BOST FARM 5-7 PAD

BOST FARM 1N-8B-L

Wellbore #1

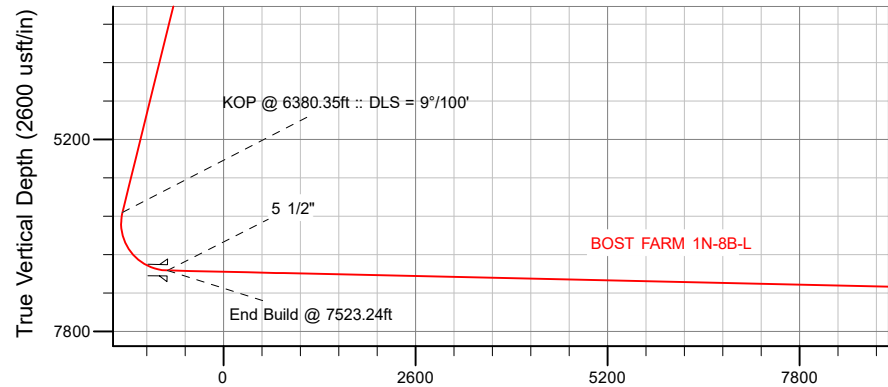
Plan: Design #1

Standard Planning Report

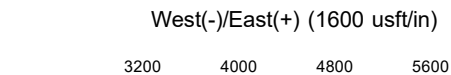
28 December, 2017

SRC ENERGY

CASING DETAILS			
TVD	MD	Name	Size
1750.00	1785.48	9 5/8"	9-5/8
6976.00	7523.24	5 1/2"	5-1/2



Vertical Section at 87.07° (2600 usft/in)



SECTION DETAILS										
Sec	MD	Inc	Azi	TVD	+N/-S	+E/-W	Dleg	TFace	VSect	Target
1	0.00	0.00	0.00	0.00	0.00	0.00	0.00	0.00	0.00	
2	250.00	0.00	0.00	250.00	0.00	0.00	0.00	0.00	0.00	
3	1002.50	15.05	290.60	993.88	34.57	-91.98	2.00	290.60	-90.09	
4	6380.35	15.05	290.60	6187.26	525.89	-1399.12	0.00	0.00	-1370.40	
5	7523.24	88.72	90.69	6976.00	589.21	-795.08	9.00	159.56	-763.92	
6	17486.62	88.72	90.69	7198.00	469.18	9165.11	0.00	0.00	9177.11	BOST FARM 1N-8B-L_BHL

WELLBORE TARGET DETAILS (LAT/LONG)					
Name	TVD	+N/-S	+E/-W	Latitude	Longitude
BOST FARM 1N-8B-L_SHL	0.00	0.00	0.00	40.417811	-104.829010
BOST FARM 1N-8B-L_BHL	7198.00	469.18	9165.11	40.419094	-104.796093

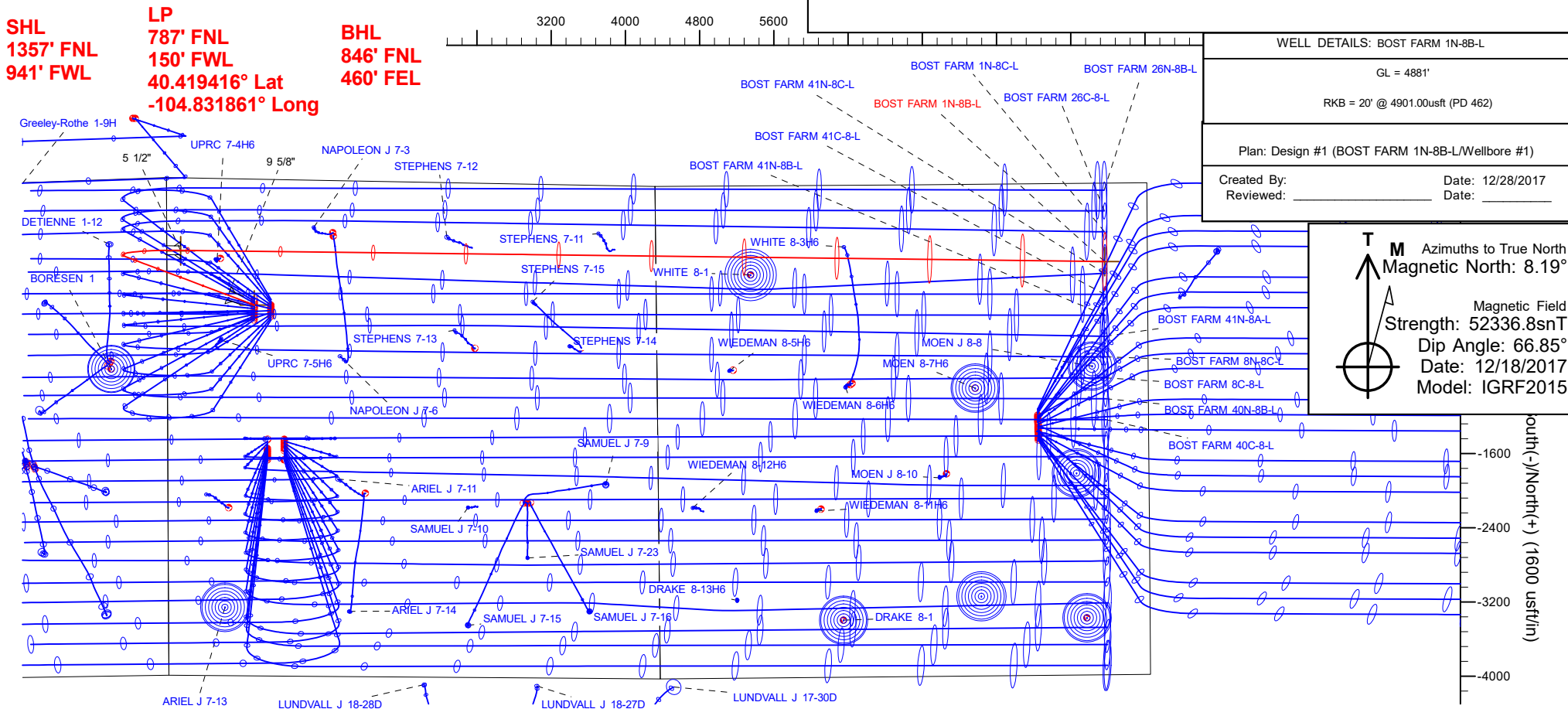
WELL DETAILS: BOST FARM 1N-8B-L

GL = 4881'

RKB = 20' @ 4901.00usft (PD 462)

Plan: Design #1 (BOST FARM 1N-8B-L/Wellbore #1)

Created By: _____ Date: 12/28/2017
Reviewed: _____ Date: _____



Hewlett-Packard

Planning Report

Database:	EDM 5000.14 Single User Db	Local Co-ordinate Reference:	Well BOST FARM 1N-8B-L
Company:	SRC ENERGY	TVD Reference:	RKB = 20' @ 4901.00usft (PD 462)
Project:	WELD COUNTY (NAD83, TRUE NORTH)	MD Reference:	RKB = 20' @ 4901.00usft (PD 462)
Site:	5N-66W-07 BOST FARM 5-7 PAD	North Reference:	True
Well:	BOST FARM 1N-8B-L	Survey Calculation Method:	Minimum Curvature
Wellbore:	Wellbore #1		
Design:	Design #1		

Project	WELD COUNTY (NAD83, TRUE NORTH)		
Map System:	US State Plane 1983	System Datum:	Mean Sea Level
Geo Datum:	North American Datum 1983		
Map Zone:	Colorado Northern Zone		

Site	5N-66W-07 BOST FARM 5-7 PAD			
Site Position:		Northing:	1,395,815.76 usft	Latitude: 40.417972
From:	Lat/Long	Easting:	3,187,006.76 usft	Longitude: -104.828362
Position Uncertainty:	0.00 usft	Slot Radius:	13-3/16 "	Grid Convergence: 0.43 °

Well	BOST FARM 1N-8B-L			
Well Position	+N/-S	-58.66 usft	Northing:	1,395,755.74 usft
	+E/-W	-180.43 usft	Easting:	3,186,826.79 usft
Position Uncertainty		3.28 usft	Wellhead Elevation:	Latitude: 40.417811
				Longitude: -104.829010
				Ground Level: 4,881.00 usft

Wellbore	Wellbore #1				
Magnetics	Model Name	Sample Date	Declination (°)	Dip Angle (°)	Field Strength (nT)
	IGRF2015	12/18/2017	8.19	66.85	52,336.78708633

Design	Design #1			
Audit Notes:				
Version:	Phase:	PLAN	Tie On Depth:	0.00
Vertical Section:	Depth From (TVD) (usft)	+N/-S (usft)	+E/-W (usft)	Direction (°)
	0.00	0.00	0.00	87.07

Plan Survey Tool Program	Date	12/28/2017		
Depth From (usft)	Depth To (usft)	Survey (Wellbore)	Tool Name	Remarks
1	0.00	1,750.00	Design #1 (Wellbore #1)	SRC Energy_ISCWSA REV 2
				Fixed:v2:crustal field declinatio
2	1,750.00	17,486.62	Design #1 (Wellbore #1)	SRC Energy_ISCWSA REV 2
				Fixed:v2:crustal field declinatio

Plan Sections										
Measured Depth (usft)	Inclination (°)	Azimuth (°)	Vertical Depth (usft)	+N/-S (usft)	+E/-W (usft)	Dogleg Rate (°/100usft)	Build Rate (°/100usft)	Turn Rate (°/100usft)	TFO (°)	Target
0.00	0.00	0.00	0.00	0.00	0.00	0.00	0.00	0.00	0.00	
250.00	0.00	0.00	250.00	0.00	0.00	0.00	0.00	0.00	0.00	
1,002.50	15.05	290.60	993.88	34.57	-91.98	2.00	2.00	0.00	290.60	
6,380.35	15.05	290.60	6,187.26	525.89	-1,399.12	0.00	0.00	0.00	0.00	
7,523.24	88.72	90.69	6,976.00	589.21	-795.08	9.00	6.45	14.01	159.56	
17,486.62	88.72	90.69	7,198.00	469.18	9,165.11	0.00	0.00	0.00	0.00	BOST FARM 1N-8B-L

Hewlett-Packard

Planning Report

Database:	EDM 5000.14 Single User Db	Local Co-ordinate Reference:	Well BOST FARM 1N-8B-L
Company:	SRC ENERGY	TVD Reference:	RKB = 20' @ 4901.00usft (PD 462)
Project:	WELD COUNTY (NAD83, TRUE NORTH)	MD Reference:	RKB = 20' @ 4901.00usft (PD 462)
Site:	5N-66W-07 BOST FARM 5-7 PAD	North Reference:	True
Well:	BOST FARM 1N-8B-L	Survey Calculation Method:	Minimum Curvature
Wellbore:	Wellbore #1		
Design:	Design #1		

Planned Survey									
Measured Depth (usft)	Inclination (°)	Azimuth (°)	Vertical Depth (usft)	+N/-S (usft)	+E/-W (usft)	Vertical Section (usft)	Dogleg Rate (°/100usft)	Build Rate (°/100usft)	Turn Rate (°/100usft)
0.00	0.00	0.00	0.00	0.00	0.00	0.00	0.00	0.00	0.00
100.00	0.00	0.00	100.00	0.00	0.00	0.00	0.00	0.00	0.00
200.00	0.00	0.00	200.00	0.00	0.00	0.00	0.00	0.00	0.00
250.00	0.00	0.00	250.00	0.00	0.00	0.00	0.00	0.00	0.00
Begin Nudge @ 250.00ft									
300.00	1.00	290.60	300.00	0.15	-0.41	-0.40	2.00	2.00	0.00
400.00	3.00	290.60	399.93	1.38	-3.68	-3.60	2.00	2.00	0.00
500.00	5.00	290.60	499.68	3.84	-10.20	-9.99	2.00	2.00	0.00
600.00	7.00	290.60	599.13	7.51	-19.99	-19.58	2.00	2.00	0.00
700.00	9.00	290.60	698.15	12.41	-33.02	-32.34	2.00	2.00	0.00
800.00	11.00	290.60	796.63	18.52	-49.27	-48.26	2.00	2.00	0.00
900.00	13.00	290.60	894.44	25.83	-68.73	-67.32	2.00	2.00	0.00
1,002.50	15.05	290.60	993.88	34.57	-91.98	-90.09	2.00	2.00	0.00
End Nudge @ 1002.50ft									
1,100.00	15.05	290.60	1,088.03	43.48	-115.68	-113.30	0.00	0.00	0.00
1,200.00	15.05	290.60	1,184.60	52.62	-139.98	-137.11	0.00	0.00	0.00
1,300.00	15.05	290.60	1,281.17	61.75	-164.29	-160.92	0.00	0.00	0.00
1,400.00	15.05	290.60	1,377.74	70.89	-188.60	-184.73	0.00	0.00	0.00
1,500.00	15.05	290.60	1,474.31	80.02	-212.90	-208.53	0.00	0.00	0.00
1,600.00	15.05	290.60	1,570.88	89.16	-237.21	-232.34	0.00	0.00	0.00
1,700.00	15.05	290.60	1,667.45	98.30	-261.51	-256.15	0.00	0.00	0.00
1,785.48	15.05	290.60	1,750.00	106.11	-282.29	-276.50	0.00	0.00	0.00
9 5/8"									
1,800.00	15.05	290.60	1,764.02	107.43	-285.82	-279.95	0.00	0.00	0.00
1,900.00	15.05	290.60	1,860.59	116.57	-310.13	-303.76	0.00	0.00	0.00
2,000.00	15.05	290.60	1,957.16	125.70	-334.43	-327.57	0.00	0.00	0.00
2,100.00	15.05	290.60	2,053.73	134.84	-358.74	-351.37	0.00	0.00	0.00
2,200.00	15.05	290.60	2,150.30	143.98	-383.04	-375.18	0.00	0.00	0.00
2,300.00	15.05	290.60	2,246.87	153.11	-407.35	-398.99	0.00	0.00	0.00
2,400.00	15.05	290.60	2,343.44	162.25	-431.66	-422.80	0.00	0.00	0.00
2,500.00	15.05	290.60	2,440.01	171.38	-455.96	-446.60	0.00	0.00	0.00
2,600.00	15.05	290.60	2,536.58	180.52	-480.27	-470.41	0.00	0.00	0.00
2,700.00	15.05	290.60	2,633.15	189.66	-504.57	-494.22	0.00	0.00	0.00
2,800.00	15.05	290.60	2,729.72	198.79	-528.88	-518.02	0.00	0.00	0.00
2,900.00	15.05	290.60	2,826.29	207.93	-553.18	-541.83	0.00	0.00	0.00
3,000.00	15.05	290.60	2,922.86	217.06	-577.49	-565.64	0.00	0.00	0.00
3,100.00	15.05	290.60	3,019.43	226.20	-601.80	-589.45	0.00	0.00	0.00
3,200.00	15.05	290.60	3,116.00	235.34	-626.10	-613.25	0.00	0.00	0.00
3,300.00	15.05	290.60	3,212.57	244.47	-650.41	-637.06	0.00	0.00	0.00
3,400.00	15.05	290.60	3,309.14	253.61	-674.71	-660.87	0.00	0.00	0.00
3,500.00	15.05	290.60	3,405.71	262.74	-699.02	-684.67	0.00	0.00	0.00
3,600.00	15.05	290.60	3,502.28	271.88	-723.33	-708.48	0.00	0.00	0.00
3,700.00	15.05	290.60	3,598.85	281.02	-747.63	-732.29	0.00	0.00	0.00
3,800.00	15.05	290.60	3,695.42	290.15	-771.94	-756.09	0.00	0.00	0.00
3,900.00	15.05	290.60	3,791.99	299.29	-796.24	-779.90	0.00	0.00	0.00
4,000.00	15.05	290.60	3,888.56	308.42	-820.55	-803.71	0.00	0.00	0.00
4,100.00	15.05	290.60	3,985.13	317.56	-844.86	-827.52	0.00	0.00	0.00
4,200.00	15.05	290.60	4,081.70	326.70	-869.16	-851.32	0.00	0.00	0.00
4,300.00	15.05	290.60	4,178.27	335.83	-893.47	-875.13	0.00	0.00	0.00
4,400.00	15.05	290.60	4,274.84	344.97	-917.77	-898.94	0.00	0.00	0.00
4,500.00	15.05	290.60	4,371.41	354.10	-942.08	-922.74	0.00	0.00	0.00
4,600.00	15.05	290.60	4,467.98	363.24	-966.39	-946.55	0.00	0.00	0.00
4,700.00	15.05	290.60	4,564.55	372.38	-990.69	-970.36	0.00	0.00	0.00

Hewlett-Packard

Planning Report

Database:	EDM 5000.14 Single User Db	Local Co-ordinate Reference:	Well BOST FARM 1N-8B-L
Company:	SRC ENERGY	TVD Reference:	RKB = 20' @ 4901.00usft (PD 462)
Project:	WELD COUNTY (NAD83, TRUE NORTH)	MD Reference:	RKB = 20' @ 4901.00usft (PD 462)
Site:	5N-66W-07 BOST FARM 5-7 PAD	North Reference:	True
Well:	BOST FARM 1N-8B-L	Survey Calculation Method:	Minimum Curvature
Wellbore:	Wellbore #1		
Design:	Design #1		

Planned Survey									
Measured Depth (usft)	Inclination (°)	Azimuth (°)	Vertical Depth (usft)	+N/-S (usft)	+E/-W (usft)	Vertical Section (usft)	Dogleg Rate (°/100usft)	Build Rate (°/100usft)	Turn Rate (°/100usft)
4,800.00	15.05	290.60	4,661.12	381.51	-1,015.00	-994.16	0.00	0.00	0.00
4,900.00	15.05	290.60	4,757.69	390.65	-1,039.30	-1,017.97	0.00	0.00	0.00
5,000.00	15.05	290.60	4,854.26	399.78	-1,063.61	-1,041.78	0.00	0.00	0.00
5,100.00	15.05	290.60	4,950.83	408.92	-1,087.91	-1,065.59	0.00	0.00	0.00
5,200.00	15.05	290.60	5,047.40	418.06	-1,112.22	-1,089.39	0.00	0.00	0.00
5,300.00	15.05	290.60	5,143.97	427.19	-1,136.53	-1,113.20	0.00	0.00	0.00
5,400.00	15.05	290.60	5,240.54	436.33	-1,160.83	-1,137.01	0.00	0.00	0.00
5,500.00	15.05	290.60	5,337.11	445.46	-1,185.14	-1,160.81	0.00	0.00	0.00
5,600.00	15.05	290.60	5,433.68	454.60	-1,209.44	-1,184.62	0.00	0.00	0.00
5,700.00	15.05	290.60	5,530.25	463.74	-1,233.75	-1,208.43	0.00	0.00	0.00
5,800.00	15.05	290.60	5,626.82	472.87	-1,258.06	-1,232.24	0.00	0.00	0.00
5,900.00	15.05	290.60	5,723.39	482.01	-1,282.36	-1,256.04	0.00	0.00	0.00
6,000.00	15.05	290.60	5,819.96	491.14	-1,306.67	-1,279.85	0.00	0.00	0.00
6,100.00	15.05	290.60	5,916.53	500.28	-1,330.97	-1,303.66	0.00	0.00	0.00
6,200.00	15.05	290.60	6,013.10	509.42	-1,355.28	-1,327.46	0.00	0.00	0.00
6,300.00	15.05	290.60	6,109.67	518.55	-1,379.59	-1,351.27	0.00	0.00	0.00
6,380.35	15.05	290.60	6,187.26	525.89	-1,399.12	-1,370.40	0.00	0.00	0.00
KOP @ 6380.35ft :: DLS = 9°/100'									
6,400.00	13.41	293.26	6,206.31	527.69	-1,403.60	-1,374.78	9.00	-8.36	13.56
6,450.00	9.43	304.06	6,255.32	532.28	-1,412.32	-1,383.26	9.00	-7.96	21.59
6,500.00	6.20	327.78	6,304.86	536.86	-1,417.15	-1,387.85	9.00	-6.46	47.44
6,550.00	5.32	13.05	6,354.63	541.40	-1,418.07	-1,388.54	9.00	-1.75	90.53
6,600.00	7.66	48.18	6,404.33	545.88	-1,415.06	-1,385.30	9.00	4.67	70.27
6,650.00	11.37	63.89	6,453.64	550.28	-1,408.15	-1,378.17	9.00	7.43	31.42
6,700.00	15.51	71.65	6,502.26	554.55	-1,397.37	-1,367.19	9.00	8.27	15.51
6,750.00	19.80	76.15	6,549.90	558.68	-1,382.80	-1,352.43	9.00	8.58	9.01
6,800.00	24.16	79.10	6,596.25	562.65	-1,364.52	-1,333.97	9.00	8.73	5.88
6,850.00	28.57	81.18	6,641.04	566.42	-1,342.65	-1,311.94	9.00	8.81	4.17
6,900.00	32.99	82.74	6,683.99	569.97	-1,317.32	-1,286.46	9.00	8.86	3.13
6,950.00	37.44	83.98	6,724.83	573.29	-1,288.69	-1,257.69	9.00	8.89	2.46
7,000.00	41.89	84.98	6,763.31	576.35	-1,256.93	-1,225.82	9.00	8.91	2.01
7,050.00	46.35	85.82	6,799.20	579.13	-1,222.24	-1,191.03	9.00	8.92	1.69
7,100.00	50.82	86.55	6,832.26	581.61	-1,184.83	-1,153.55	9.00	8.93	1.45
7,150.00	55.29	87.19	6,862.31	583.78	-1,144.94	-1,113.60	9.00	8.94	1.28
7,200.00	59.77	87.76	6,889.14	585.63	-1,102.81	-1,071.43	9.00	8.95	1.15
7,250.00	64.24	88.29	6,912.61	587.15	-1,058.70	-1,027.30	9.00	8.95	1.05
7,300.00	68.72	88.77	6,932.56	588.32	-1,012.88	-981.48	9.00	8.96	0.97
7,350.00	73.20	89.23	6,948.87	589.14	-965.64	-934.25	9.00	8.96	0.91
7,400.00	77.68	89.67	6,961.43	589.60	-917.26	-885.91	9.00	8.96	0.87
7,450.00	82.16	90.09	6,970.18	589.71	-868.04	-836.76	9.00	8.96	0.84
7,500.00	86.64	90.50	6,975.06	589.45	-818.29	-787.09	9.00	8.96	0.82
7,523.24	88.72	90.69	6,976.00	589.21	-795.08	-763.91	9.00	8.96	0.82
End Build @ 7523.24ft - 5 1/2"									
7,600.00	88.72	90.69	6,977.71	588.29	-718.34	-687.33	0.00	0.00	0.00
7,700.00	88.72	90.69	6,979.94	587.08	-618.37	-587.55	0.00	0.00	0.00
7,800.00	88.72	90.69	6,982.17	585.88	-518.41	-487.77	0.00	0.00	0.00
7,900.00	88.72	90.69	6,984.40	584.67	-418.44	-388.00	0.00	0.00	0.00
8,000.00	88.72	90.69	6,986.62	583.47	-318.47	-288.22	0.00	0.00	0.00
8,100.00	88.72	90.69	6,988.85	582.26	-218.50	-188.45	0.00	0.00	0.00
8,200.00	88.72	90.69	6,991.08	581.06	-118.53	-88.67	0.00	0.00	0.00
8,300.00	88.72	90.69	6,993.31	579.85	-18.57	11.10	0.00	0.00	0.00
8,400.00	88.72	90.69	6,995.54	578.65	81.40	110.88	0.00	0.00	0.00
8,500.00	88.72	90.69	6,997.77	577.44	181.37	210.66	0.00	0.00	0.00
8,600.00	88.72	90.69	6,999.99	576.24	281.34	310.43	0.00	0.00	0.00

Hewlett-Packard

Planning Report

Database:	EDM 5000.14 Single User Db	Local Co-ordinate Reference:	Well BOST FARM 1N-8B-L
Company:	SRC ENERGY	TVD Reference:	RKB = 20' @ 4901.00usft (PD 462)
Project:	WELD COUNTY (NAD83, TRUE NORTH)	MD Reference:	RKB = 20' @ 4901.00usft (PD 462)
Site:	5N-66W-07 BOST FARM 5-7 PAD	North Reference:	True
Well:	BOST FARM 1N-8B-L	Survey Calculation Method:	Minimum Curvature
Wellbore:	Wellbore #1		
Design:	Design #1		

Planned Survey										
Measured Depth (usft)	Inclination (°)	Azimuth (°)	Vertical Depth (usft)	+N/-S (usft)	+E/-W (usft)	Vertical Section (usft)	Dogleg Rate (°/100usft)	Build Rate (°/100usft)	Turn Rate (°/100usft)	
8,700.00	88.72	90.69	7,002.22	575.03	381.31	410.21	0.00	0.00	0.00	
8,800.00	88.72	90.69	7,004.45	573.83	481.27	509.98	0.00	0.00	0.00	
8,900.00	88.72	90.69	7,006.68	572.62	581.24	609.76	0.00	0.00	0.00	
9,000.00	88.72	90.69	7,008.91	571.42	681.21	709.53	0.00	0.00	0.00	
9,100.00	88.72	90.69	7,011.13	570.22	781.18	809.31	0.00	0.00	0.00	
9,200.00	88.72	90.69	7,013.36	569.01	881.15	909.08	0.00	0.00	0.00	
9,300.00	88.72	90.69	7,015.59	567.81	981.11	1,008.86	0.00	0.00	0.00	
9,400.00	88.72	90.69	7,017.82	566.60	1,081.08	1,108.64	0.00	0.00	0.00	
9,500.00	88.72	90.69	7,020.05	565.40	1,181.05	1,208.41	0.00	0.00	0.00	
9,600.00	88.72	90.69	7,022.27	564.19	1,281.02	1,308.19	0.00	0.00	0.00	
9,700.00	88.72	90.69	7,024.50	562.99	1,380.99	1,407.96	0.00	0.00	0.00	
9,800.00	88.72	90.69	7,026.73	561.78	1,480.95	1,507.74	0.00	0.00	0.00	
9,900.00	88.72	90.69	7,028.96	560.58	1,580.92	1,607.51	0.00	0.00	0.00	
10,000.00	88.72	90.69	7,031.19	559.37	1,680.89	1,707.29	0.00	0.00	0.00	
10,100.00	88.72	90.69	7,033.42	558.17	1,780.86	1,807.06	0.00	0.00	0.00	
10,200.00	88.72	90.69	7,035.64	556.96	1,880.82	1,906.84	0.00	0.00	0.00	
10,300.00	88.72	90.69	7,037.87	555.76	1,980.79	2,006.62	0.00	0.00	0.00	
10,400.00	88.72	90.69	7,040.10	554.55	2,080.76	2,106.39	0.00	0.00	0.00	
10,500.00	88.72	90.69	7,042.33	553.35	2,180.73	2,206.17	0.00	0.00	0.00	
10,600.00	88.72	90.69	7,044.56	552.14	2,280.70	2,305.94	0.00	0.00	0.00	
10,700.00	88.72	90.69	7,046.78	550.94	2,380.66	2,405.72	0.00	0.00	0.00	
10,800.00	88.72	90.69	7,049.01	549.73	2,480.63	2,505.49	0.00	0.00	0.00	
10,900.00	88.72	90.69	7,051.24	548.53	2,580.60	2,605.27	0.00	0.00	0.00	
11,000.00	88.72	90.69	7,053.47	547.33	2,680.57	2,705.04	0.00	0.00	0.00	
11,100.00	88.72	90.69	7,055.70	546.12	2,780.54	2,804.82	0.00	0.00	0.00	
11,200.00	88.72	90.69	7,057.93	544.92	2,880.50	2,904.60	0.00	0.00	0.00	
11,300.00	88.72	90.69	7,060.15	543.71	2,980.47	3,004.37	0.00	0.00	0.00	
11,400.00	88.72	90.69	7,062.38	542.51	3,080.44	3,104.15	0.00	0.00	0.00	
11,500.00	88.72	90.69	7,064.61	541.30	3,180.41	3,203.92	0.00	0.00	0.00	
11,600.00	88.72	90.69	7,066.84	540.10	3,280.38	3,303.70	0.00	0.00	0.00	
11,700.00	88.72	90.69	7,069.07	538.89	3,380.34	3,403.47	0.00	0.00	0.00	
11,800.00	88.72	90.69	7,071.29	537.69	3,480.31	3,503.25	0.00	0.00	0.00	
11,900.00	88.72	90.69	7,073.52	536.48	3,580.28	3,603.03	0.00	0.00	0.00	
12,000.00	88.72	90.69	7,075.75	535.28	3,680.25	3,702.80	0.00	0.00	0.00	
12,100.00	88.72	90.69	7,077.98	534.07	3,780.22	3,802.58	0.00	0.00	0.00	
12,200.00	88.72	90.69	7,080.21	532.87	3,880.18	3,902.35	0.00	0.00	0.00	
12,300.00	88.72	90.69	7,082.43	531.66	3,980.15	4,002.13	0.00	0.00	0.00	
12,400.00	88.72	90.69	7,084.66	530.46	4,080.12	4,101.90	0.00	0.00	0.00	
12,500.00	88.72	90.69	7,086.89	529.25	4,180.09	4,201.68	0.00	0.00	0.00	
12,600.00	88.72	90.69	7,089.12	528.05	4,280.06	4,301.45	0.00	0.00	0.00	
12,700.00	88.72	90.69	7,091.35	526.85	4,380.02	4,401.23	0.00	0.00	0.00	
12,800.00	88.72	90.69	7,093.58	525.64	4,479.99	4,501.01	0.00	0.00	0.00	
12,900.00	88.72	90.69	7,095.80	524.44	4,579.96	4,600.78	0.00	0.00	0.00	
13,000.00	88.72	90.69	7,098.03	523.23	4,679.93	4,700.56	0.00	0.00	0.00	
13,100.00	88.72	90.69	7,100.26	522.03	4,779.89	4,800.33	0.00	0.00	0.00	
13,200.00	88.72	90.69	7,102.49	520.82	4,879.86	4,900.11	0.00	0.00	0.00	
13,300.00	88.72	90.69	7,104.72	519.62	4,979.83	4,999.88	0.00	0.00	0.00	
13,400.00	88.72	90.69	7,106.94	518.41	5,079.80	5,099.66	0.00	0.00	0.00	
13,500.00	88.72	90.69	7,109.17	517.21	5,179.77	5,199.43	0.00	0.00	0.00	
13,600.00	88.72	90.69	7,111.40	516.00	5,279.73	5,299.21	0.00	0.00	0.00	
13,700.00	88.72	90.69	7,113.63	514.80	5,379.70	5,398.99	0.00	0.00	0.00	
13,800.00	88.72	90.69	7,115.86	513.59	5,479.67	5,498.76	0.00	0.00	0.00	
13,900.00	88.72	90.69	7,118.09	512.39	5,579.64	5,598.54	0.00	0.00	0.00	
14,000.00	88.72	90.69	7,120.31	511.18	5,679.61	5,698.31	0.00	0.00	0.00	

Hewlett-Packard

Planning Report

Database:	EDM 5000.14 Single User Db	Local Co-ordinate Reference:	Well BOST FARM 1N-8B-L
Company:	SRC ENERGY	TVD Reference:	RKB = 20' @ 4901.00usft (PD 462)
Project:	WELD COUNTY (NAD83, TRUE NORTH)	MD Reference:	RKB = 20' @ 4901.00usft (PD 462)
Site:	5N-66W-07 BOST FARM 5-7 PAD	North Reference:	True
Well:	BOST FARM 1N-8B-L	Survey Calculation Method:	Minimum Curvature
Wellbore:	Wellbore #1		
Design:	Design #1		

Planned Survey										
Measured Depth (usft)	Inclination (°)	Azimuth (°)	Vertical Depth (usft)	+N/-S (usft)	+E/-W (usft)	Vertical Section (usft)	Dogleg Rate (°/100usft)	Build Rate (°/100usft)	Turn Rate (°/100usft)	
14,100.00	88.72	90.69	7,122.54	509.98	5,779.57	5,798.09	0.00	0.00	0.00	
14,200.00	88.72	90.69	7,124.77	508.77	5,879.54	5,897.86	0.00	0.00	0.00	
14,300.00	88.72	90.69	7,127.00	507.57	5,979.51	5,997.64	0.00	0.00	0.00	
14,400.00	88.72	90.69	7,129.23	506.37	6,079.48	6,097.42	0.00	0.00	0.00	
14,500.00	88.72	90.69	7,131.45	505.16	6,179.45	6,197.19	0.00	0.00	0.00	
14,600.00	88.72	90.69	7,133.68	503.96	6,279.41	6,296.97	0.00	0.00	0.00	
14,700.00	88.72	90.69	7,135.91	502.75	6,379.38	6,396.74	0.00	0.00	0.00	
14,800.00	88.72	90.69	7,138.14	501.55	6,479.35	6,496.52	0.00	0.00	0.00	
14,900.00	88.72	90.69	7,140.37	500.34	6,579.32	6,596.29	0.00	0.00	0.00	
15,000.00	88.72	90.69	7,142.59	499.14	6,679.29	6,696.07	0.00	0.00	0.00	
15,100.00	88.72	90.69	7,144.82	497.93	6,779.25	6,795.84	0.00	0.00	0.00	
15,200.00	88.72	90.69	7,147.05	496.73	6,879.22	6,895.62	0.00	0.00	0.00	
15,300.00	88.72	90.69	7,149.28	495.52	6,979.19	6,995.40	0.00	0.00	0.00	
15,400.00	88.72	90.69	7,151.51	494.32	7,079.16	7,095.17	0.00	0.00	0.00	
15,500.00	88.72	90.69	7,153.74	493.11	7,179.12	7,194.95	0.00	0.00	0.00	
15,600.00	88.72	90.69	7,155.96	491.91	7,279.09	7,294.72	0.00	0.00	0.00	
15,700.00	88.72	90.69	7,158.19	490.70	7,379.06	7,394.50	0.00	0.00	0.00	
15,800.00	88.72	90.69	7,160.42	489.50	7,479.03	7,494.27	0.00	0.00	0.00	
15,900.00	88.72	90.69	7,162.65	488.29	7,579.00	7,594.05	0.00	0.00	0.00	
16,000.00	88.72	90.69	7,164.88	487.09	7,678.96	7,693.82	0.00	0.00	0.00	
16,100.00	88.72	90.69	7,167.10	485.88	7,778.93	7,793.60	0.00	0.00	0.00	
16,200.00	88.72	90.69	7,169.33	484.68	7,878.90	7,893.38	0.00	0.00	0.00	
16,300.00	88.72	90.69	7,171.56	483.48	7,978.87	7,993.15	0.00	0.00	0.00	
16,400.00	88.72	90.69	7,173.79	482.27	8,078.84	8,092.93	0.00	0.00	0.00	
16,500.00	88.72	90.69	7,176.02	481.07	8,178.80	8,192.70	0.00	0.00	0.00	
16,600.00	88.72	90.69	7,178.24	479.86	8,278.77	8,292.48	0.00	0.00	0.00	
16,700.00	88.72	90.69	7,180.47	478.66	8,378.74	8,392.25	0.00	0.00	0.00	
16,800.00	88.72	90.69	7,182.70	477.45	8,478.71	8,492.03	0.00	0.00	0.00	
16,900.00	88.72	90.69	7,184.93	476.25	8,578.68	8,591.80	0.00	0.00	0.00	
17,000.00	88.72	90.69	7,187.16	475.04	8,678.64	8,691.58	0.00	0.00	0.00	
17,100.00	88.72	90.69	7,189.39	473.84	8,778.61	8,791.36	0.00	0.00	0.00	
17,200.00	88.72	90.69	7,191.61	472.63	8,878.58	8,891.13	0.00	0.00	0.00	
17,300.00	88.72	90.69	7,193.84	471.43	8,978.55	8,990.91	0.00	0.00	0.00	
17,400.00	88.72	90.69	7,196.07	470.22	9,078.52	9,090.68	0.00	0.00	0.00	
17,486.62	88.72	90.69	7,198.00	469.18	9,165.11	9,177.11	0.00	0.00	0.00	
TD Well @ 17486.62ft										

Casing Points						
Measured Depth (usft)	Vertical Depth (usft)	Name			Casing Diameter (")	Hole Diameter (")
1,785.48	1,750.00	9 5/8"			9-5/8	13-1/2
7,523.24	6,976.00	5 1/2"			5-1/2	8-1/2

Hewlett-Packard

Planning Report

Database:	EDM 5000.14 Single User Db	Local Co-ordinate Reference:	Well BOST FARM 1N-8B-L
Company:	SRC ENERGY	TVD Reference:	RKB = 20' @ 4901.00usft (PD 462)
Project:	WELD COUNTY (NAD83, TRUE NORTH)	MD Reference:	RKB = 20' @ 4901.00usft (PD 462)
Site:	5N-66W-07 BOST FARM 5-7 PAD	North Reference:	True
Well:	BOST FARM 1N-8B-L	Survey Calculation Method:	Minimum Curvature
Wellbore:	Wellbore #1		
Design:	Design #1		

Plan Annotations					
Measured Depth (usft)	Vertical Depth (usft)	Local Coordinates		Comment	
		+N/-S (usft)	+E/-W (usft)		
250.00	250.00	0.00	0.00	Begin Nudge @ 250.00ft	
1,002.50	993.88	34.57	-91.98	End Nudge @ 1002.50ft	
6,380.35	6,187.26	525.89	-1,399.12	KOP @ 6380.35ft :: DLS = 9°/100'	
7,523.24	6,976.00	589.21	-795.08	End Build @ 7523.24ft	
17,486.62	7,198.00	469.18	9,165.11	TD Well @ 17486.62ft	