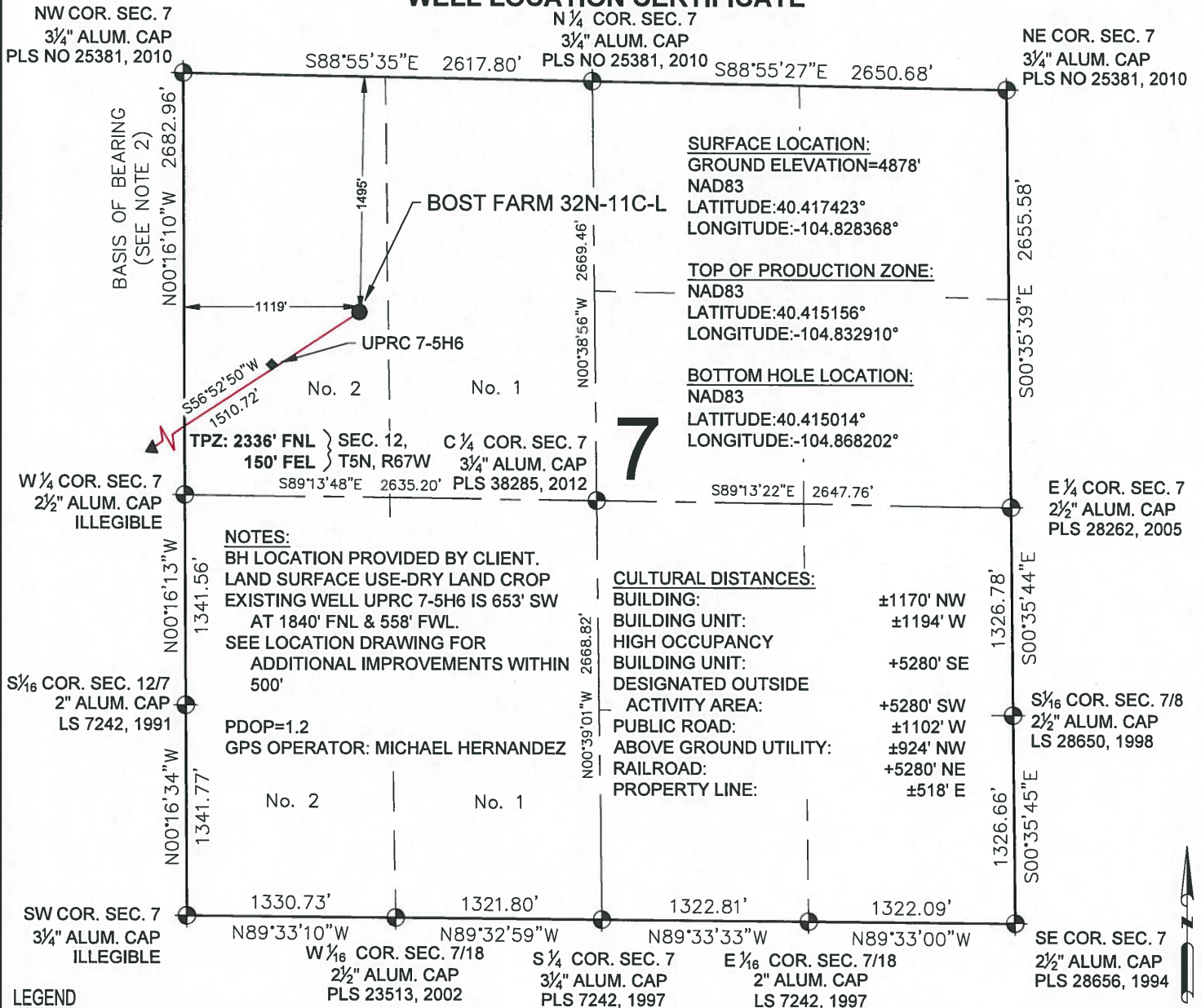


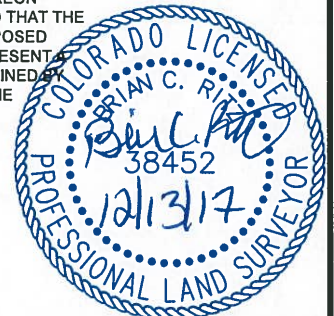
# BOST FARM 32N-11C-L WELL LOCATION CERTIFICATE



## WELL BOST FARM 32N-11C-L TO BE LOCATED 1495' FNL & 1119' FWL

I, BRIAN C. RITZ, A LICENSED PROFESSIONAL LAND SURVEYOR IN THE STATE OF COLORADO DO HEREBY CERTIFY TO SRC ENERGY, INC., THAT THE SURVEY AND WELL LOCATION CERTIFICATE SHOWN HEREON WERE DONE BY ME OR UNDER MY DIRECT SUPERVISION AND THAT THE DRAWING SHOWN HEREON ACCURATELY DEPICTS THE PROPOSED LOCATION OF THE WELL. THIS CERTIFICATE DOES NOT REPRESENT A LAND SURVEY PLAT OR IMPROVEMENT SURVEY PLAT AS DEFINED BY C.R.S. 38-51-102 AND CANNOT BE RELIED UPON TO DETERMINE OWNERSHIP.

BRIAN C. RITZ, PLS 38452  
COLORADO LICENSED PROFESSIONAL LAND SURVEYOR  
FOR AND ON BEHALF OF P.F.S., LLC



SHEET 1 OF 3



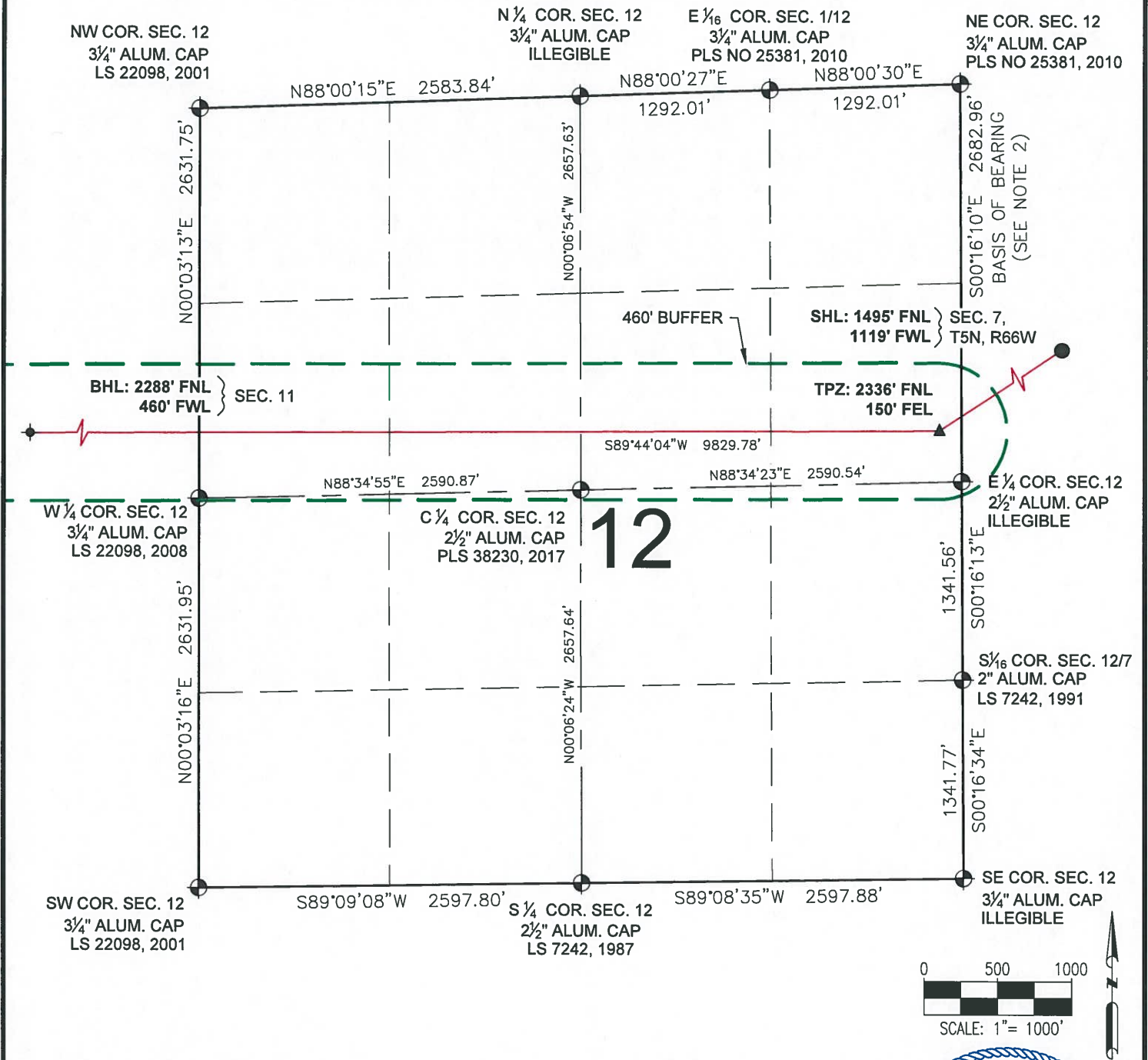
FIELD DATE:  
06-15-17  
DRAWING DATE:  
12-11-17  
BY:  
CSG  
CHECKED BY:  
KAD

WELL NAME:  
BOST FARM 32N-11C-L  
SURFACE LOCATION:  
LOT 2 NW 1/4 SEC. 7, T5N, R66W, 6TH P.M.  
WELD COUNTY, COLORADO





# BOST FARM 32N-11C-L WELL LOCATION CERTIFICATE



## LEGEND

- = EXISTING MONUMENT
- = CALCULATED POSITION
- = PROPOSED WELL
- ◆ = EXISTING WELL
- ◆ = BOTTOM HOLE
- ▲ = TOP OF PRODUCTION ZONE
- SHL = SURFACE HOLE LOCATION
- TPZ = TOP OF PRODUCTION ZONE
- BHL = BOTTOM HOLE LOCATION

BRIAN C. RITZ, PLS 38452  
COLORADO LICENSED PROFESSIONAL LAND SURVEYOR  
FOR AND ON BEHALF OF P.F.S., LLC



SHEET 2 OF 3



FIELD DATE:  
**06-15-17**

DRAWING DATE:  
**12-11-17**

BY:  
**CSG**

CHECKED BY:  
**KAD**

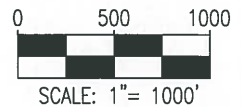
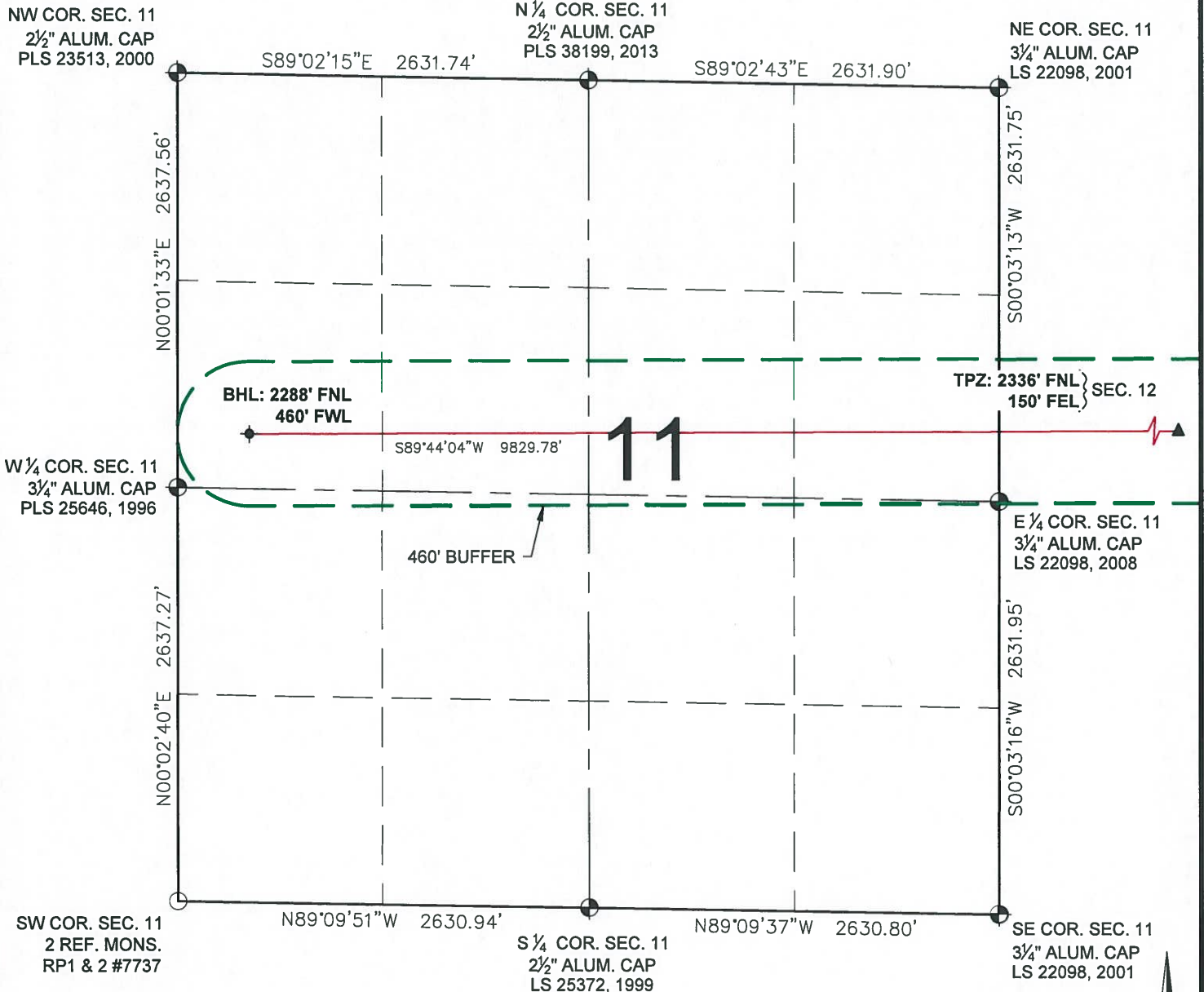
WELL NAME:  
**BOST FARM 32N-11C-L**

SURFACE LOCATION:  
**LOT 2 NW 1/4 SEC. 7, T5N, R66W, 6TH P.M.**  
**WELD COUNTY, COLORADO**





# BOST FARM 32N-11C-L WELL LOCATION CERTIFICATE



## LEGEND

- ⊕ = EXISTING MONUMENT
- = CALCULATED POSITION
- = PROPOSED WELL
- ◆ = EXISTING WELL
- ⬮ = BOTTOM HOLE
- ▲ = TOP OF PRODUCTION ZONE
- TPZ = TOP OF PRODUCTION ZONE
- BHL = BOTTOM HOLE LOCATION

BRIAN C. RITZ, PLS 38452  
COLORADO LICENSED PROFESSIONAL LAND SURVEYOR  
FOR AND ON BEHALF OF P.F.S., LLC



SHEET 3 OF 3



FIELD DATE:  
06-15-17

DRAWING DATE:  
12-11-17

BY:  
CSG

CHECKED BY:  
KAD

WELL NAME:  
BOST FARM 32N-11C-L

SURFACE LOCATION:  
LOT 2 NW 1/4 SEC. 7, T5N, R66W, 6TH P.M.  
WELD COUNTY, COLORADO

