

SRC ENERGY

WELD COUNTY (NAD83, TRUE NORTH)

5N-66W-07 BOST FARM 5-7 PAD

BOST FARM 32N-11C-L

Wellbore #1

Plan: Design #1

Standard Planning Report

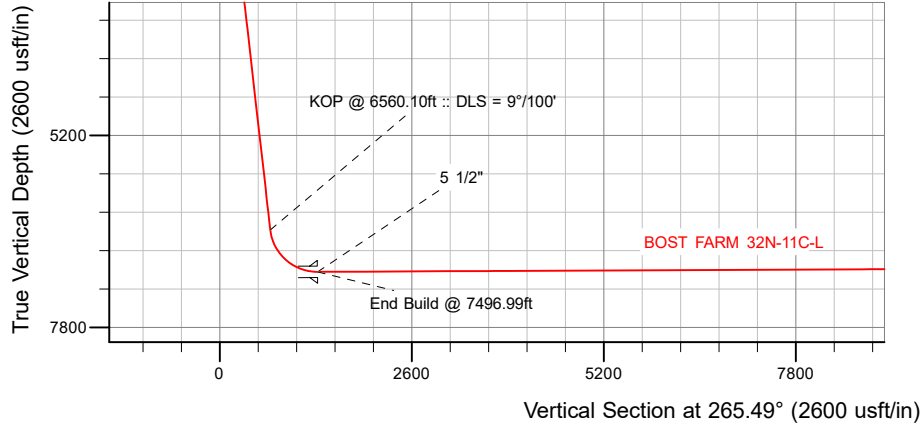
28 December, 2017

Project: WELD COUNTY (NAD83, TRUE NORTH)
 Site: 5N-66W-07 BOST FARM 5-7 PAD
 Well: BOST FARM 32N-11C-L
 Wellbore: Wellbore #1
 Design: Design #1

SRC ENERGY

CASING DETAILS

TVD	MD	Name	Size
1750.00	1765.76	9 5/8"	9-5/8
7048.00	7496.99	5 1/2"	5-1/2

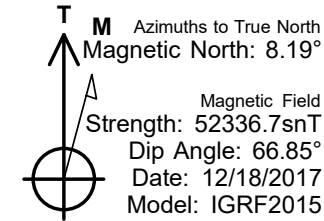
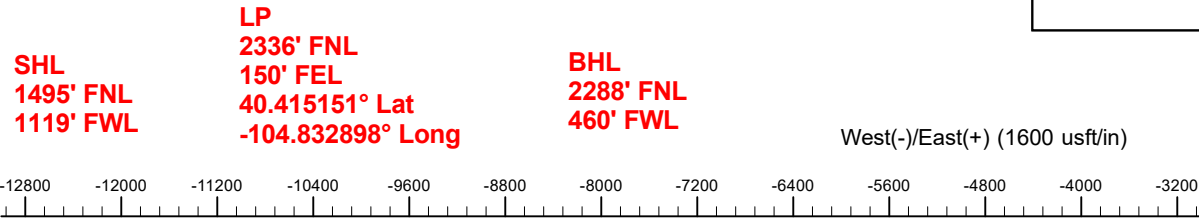


SECTION DETAILS

Sec	MD	Inc	Azi	TVD	+N/-S	+E/-W	Dleg	TFace	V Sect	Target
1	0.00	0.00	0.00	0.00	0.00	0.00	0.00	0.00	0.00	
2	250.00	0.00	0.00	250.00	0.00	0.00	0.00	0.00	0.00	
3	713.50	9.27	219.70	711.48	-28.79	-23.90	2.00	219.70	26.09	
4	6560.10	9.27	219.70	6481.73	-753.42	-625.50	0.00	0.00	682.82	
5	7496.99	90.26	269.72	7048.00	-827.64	-1261.24	9.00	50.36	1322.43	
6	17327.69	90.26	269.72	7003.00	-875.09	-11091.72	0.00	0.0011126.19		BOST FARM 32N-11C-L_BHL

WELLBORE TARGET DETAILS (LAT/LONG)

Name	TVD	+N/-S	+E/-W	Latitude	Longitude
BOST FARM 32N-11C-L_SHL	0.00	0.00	0.00	40.417423	-104.828368
BOST FARM 32N-11C-L_BHL	7003.00	-875.09	-11091.72	40.415014	-104.868202



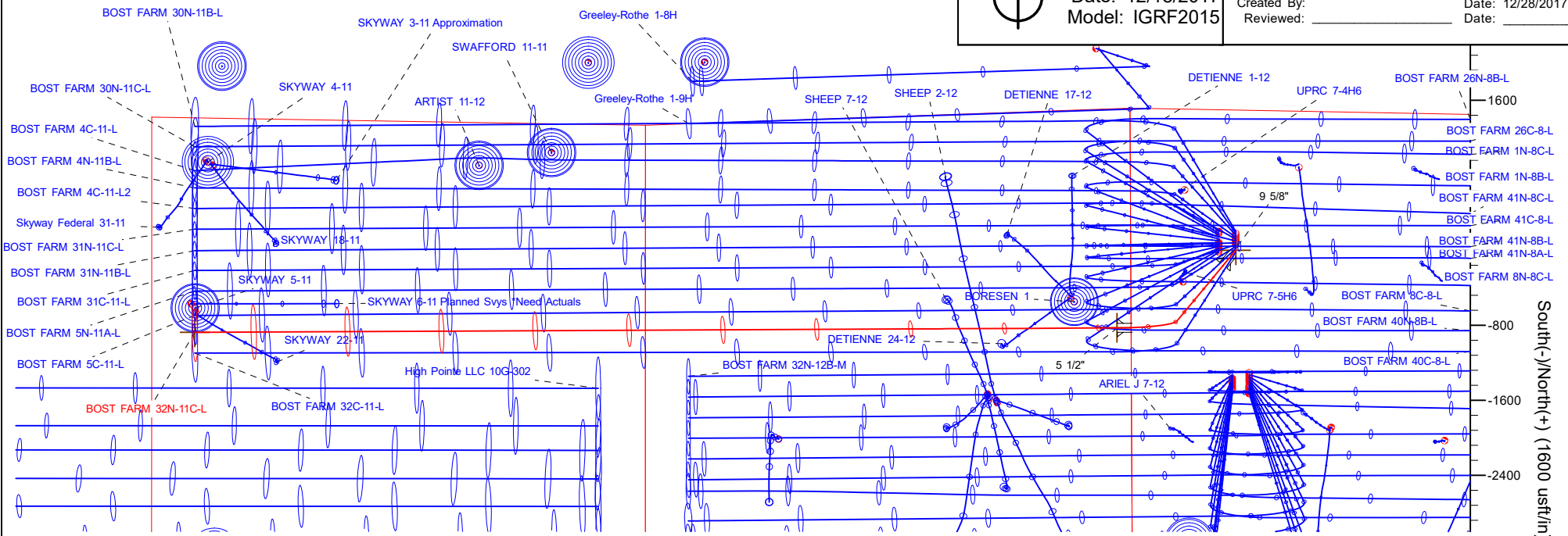
WELL DETAILS: BOST FARM 32N-11C-L

GL = 4878'

RKB = 20' @ 4898.00usft (PD 462)

Plan: Design #1 (BOST FARM 32N-11C-L/Wellbore #1)

Created By: _____ Date: 12/28/2017
 Reviewed: _____ Date: _____



Hewlett-Packard

Planning Report

Database:	EDM 5000.14 Single User Db	Local Co-ordinate Reference:	Well BOST FARM 32N-11C-L
Company:	SRC ENERGY	TVD Reference:	RKB = 20' @ 4898.00usft (PD 462)
Project:	WELD COUNTY (NAD83, TRUE NORTH)	MD Reference:	RKB = 20' @ 4898.00usft (PD 462)
Site:	5N-66W-07 BOST FARM 5-7 PAD	North Reference:	True
Well:	BOST FARM 32N-11C-L	Survey Calculation Method:	Minimum Curvature
Wellbore:	Wellbore #1		
Design:	Design #1		

Project	WELD COUNTY (NAD83, TRUE NORTH)		
Map System:	US State Plane 1983	System Datum:	Mean Sea Level
Geo Datum:	North American Datum 1983		
Map Zone:	Colorado Northern Zone		

Site	5N-66W-07 BOST FARM 5-7 PAD				
Site Position:		Northing:	1,395,815.76 usft	Latitude:	40.417972
From:	Lat/Long	Easting:	3,187,006.76 usft	Longitude:	-104.828362
Position Uncertainty:	0.00 usft	Slot Radius:	13-3/16 "	Grid Convergence:	0.43 °

Well	BOST FARM 32N-11C-L					
Well Position	+N/-S	-200.01 usft	Northing:	1,395,615.75 usft	Latitude:	40.417423
	+E/-W	-1.67 usft	Easting:	3,187,006.61 usft	Longitude:	-104.828368
Position Uncertainty		3.28 usft	Wellhead Elevation:		Ground Level:	4,878.00 usft

Wellbore	Wellbore #1				
Magnetics	Model Name	Sample Date	Declination (°)	Dip Angle (°)	Field Strength (nT)
	IGRF2015	12/18/2017	8.19	66.85	52,336.67771258

Design	Design #1			
Audit Notes:				
Version:	Phase:	PLAN	Tie On Depth:	0.00
Vertical Section:	Depth From (TVD) (usft)	+N/-S (usft)	+E/-W (usft)	Direction (°)
	0.00	0.00	0.00	265.49

Plan Survey Tool Program	Date	12/28/2017		
Depth From (usft)	Depth To (usft)	Survey (Wellbore)	Tool Name	Remarks
1	0.00	1,750.00	Design #1 (Wellbore #1)	SRC Energy_ISCWSA REV 2 Fixed:v2:crustal field declinatio
2	1,750.00	17,327.69	Design #1 (Wellbore #1)	SRC Energy_ISCWSA REV 2 Fixed:v2:crustal field declinatio

Plan Sections										
Measured Depth (usft)	Inclination (°)	Azimuth (°)	Vertical Depth (usft)	+N/-S (usft)	+E/-W (usft)	Dogleg Rate (°/100usft)	Build Rate (°/100usft)	Turn Rate (°/100usft)	TFO (°)	Target
0.00	0.00	0.00	0.00	0.00	0.00	0.00	0.00	0.00	0.00	
250.00	0.00	0.00	250.00	0.00	0.00	0.00	0.00	0.00	0.00	
713.50	9.27	219.70	711.48	-28.79	-23.90	2.00	2.00	0.00	219.70	
6,560.10	9.27	219.70	6,481.73	-753.42	-625.50	0.00	0.00	0.00	0.00	
7,496.99	90.26	269.72	7,048.00	-827.64	-1,261.24	9.00	8.64	5.34	50.36	
17,327.69	90.26	269.72	7,003.00	-875.09	-11,091.72	0.00	0.00	0.00	0.00	BOST FARM 32N-11C

Hewlett-Packard

Planning Report

Database:	EDM 5000.14 Single User Db	Local Co-ordinate Reference:	Well BOST FARM 32N-11C-L
Company:	SRC ENERGY	TVD Reference:	RKB = 20' @ 4898.00usft (PD 462)
Project:	WELD COUNTY (NAD83, TRUE NORTH)	MD Reference:	RKB = 20' @ 4898.00usft (PD 462)
Site:	5N-66W-07 BOST FARM 5-7 PAD	North Reference:	True
Well:	BOST FARM 32N-11C-L	Survey Calculation Method:	Minimum Curvature
Wellbore:	Wellbore #1		
Design:	Design #1		

Planned Survey									
Measured Depth (usft)	Inclination (°)	Azimuth (°)	Vertical Depth (usft)	+N/-S (usft)	+E/-W (usft)	Vertical Section (usft)	Dogleg Rate (°/100usft)	Build Rate (°/100usft)	Turn Rate (°/100usft)
0.00	0.00	0.00	0.00	0.00	0.00	0.00	0.00	0.00	0.00
100.00	0.00	0.00	100.00	0.00	0.00	0.00	0.00	0.00	0.00
200.00	0.00	0.00	200.00	0.00	0.00	0.00	0.00	0.00	0.00
250.00	0.00	0.00	250.00	0.00	0.00	0.00	0.00	0.00	0.00
Begin Nudge @ 250.00ft									
300.00	1.00	219.70	300.00	-0.34	-0.28	0.30	2.00	2.00	0.00
400.00	3.00	219.70	399.93	-3.02	-2.51	2.74	2.00	2.00	0.00
500.00	5.00	219.70	499.68	-8.39	-6.96	7.60	2.00	2.00	0.00
600.00	7.00	219.70	599.13	-16.43	-13.64	14.89	2.00	2.00	0.00
700.00	9.00	219.70	698.15	-27.14	-22.53	24.59	2.00	2.00	0.00
713.50	9.27	219.70	711.48	-28.79	-23.90	26.09	2.00	2.00	0.00
End Nudge @ 713.50ft									
800.00	9.27	219.70	796.85	-39.51	-32.80	35.80	0.00	0.00	0.00
900.00	9.27	219.70	895.54	-51.90	-43.09	47.04	0.00	0.00	0.00
1,000.00	9.27	219.70	994.24	-64.29	-53.38	58.27	0.00	0.00	0.00
1,100.00	9.27	219.70	1,092.93	-76.69	-63.67	69.50	0.00	0.00	0.00
1,200.00	9.27	219.70	1,191.63	-89.08	-73.96	80.74	0.00	0.00	0.00
1,300.00	9.27	219.70	1,290.32	-101.48	-84.25	91.97	0.00	0.00	0.00
1,400.00	9.27	219.70	1,389.01	-113.87	-94.54	103.20	0.00	0.00	0.00
1,500.00	9.27	219.70	1,487.71	-126.27	-104.83	114.43	0.00	0.00	0.00
1,600.00	9.27	219.70	1,586.40	-138.66	-115.12	125.67	0.00	0.00	0.00
1,700.00	9.27	219.70	1,685.10	-151.05	-125.41	136.90	0.00	0.00	0.00
1,765.76	9.27	219.70	1,750.00	-159.20	-132.17	144.29	0.00	0.00	0.00
9 5/8"									
1,800.00	9.27	219.70	1,783.79	-163.45	-135.70	148.13	0.00	0.00	0.00
1,900.00	9.27	219.70	1,882.49	-175.84	-145.99	159.36	0.00	0.00	0.00
2,000.00	9.27	219.70	1,981.18	-188.24	-156.28	170.60	0.00	0.00	0.00
2,100.00	9.27	219.70	2,079.87	-200.63	-166.57	181.83	0.00	0.00	0.00
2,200.00	9.27	219.70	2,178.57	-213.02	-176.86	193.06	0.00	0.00	0.00
2,300.00	9.27	219.70	2,277.26	-225.42	-187.15	204.29	0.00	0.00	0.00
2,400.00	9.27	219.70	2,375.96	-237.81	-197.43	215.53	0.00	0.00	0.00
2,500.00	9.27	219.70	2,474.65	-250.21	-207.72	226.76	0.00	0.00	0.00
2,600.00	9.27	219.70	2,573.34	-262.60	-218.01	237.99	0.00	0.00	0.00
2,700.00	9.27	219.70	2,672.04	-274.99	-228.30	249.23	0.00	0.00	0.00
2,800.00	9.27	219.70	2,770.73	-287.39	-238.59	260.46	0.00	0.00	0.00
2,900.00	9.27	219.70	2,869.43	-299.78	-248.88	271.69	0.00	0.00	0.00
3,000.00	9.27	219.70	2,968.12	-312.18	-259.17	282.92	0.00	0.00	0.00
3,100.00	9.27	219.70	3,066.81	-324.57	-269.46	294.16	0.00	0.00	0.00
3,200.00	9.27	219.70	3,165.51	-336.96	-279.75	305.39	0.00	0.00	0.00
3,300.00	9.27	219.70	3,264.20	-349.36	-290.04	316.62	0.00	0.00	0.00
3,400.00	9.27	219.70	3,362.90	-361.75	-300.33	327.85	0.00	0.00	0.00
3,500.00	9.27	219.70	3,461.59	-374.15	-310.62	339.09	0.00	0.00	0.00
3,600.00	9.27	219.70	3,560.28	-386.54	-320.91	350.32	0.00	0.00	0.00
3,700.00	9.27	219.70	3,658.98	-398.93	-331.20	361.55	0.00	0.00	0.00
3,800.00	9.27	219.70	3,757.67	-411.33	-341.49	372.78	0.00	0.00	0.00
3,900.00	9.27	219.70	3,856.37	-423.72	-351.78	384.02	0.00	0.00	0.00
4,000.00	9.27	219.70	3,955.06	-436.12	-362.07	395.25	0.00	0.00	0.00
4,100.00	9.27	219.70	4,053.75	-448.51	-372.36	406.48	0.00	0.00	0.00
4,200.00	9.27	219.70	4,152.45	-460.90	-382.65	417.72	0.00	0.00	0.00
4,300.00	9.27	219.70	4,251.14	-473.30	-392.94	428.95	0.00	0.00	0.00
4,400.00	9.27	219.70	4,349.84	-485.69	-403.23	440.18	0.00	0.00	0.00
4,500.00	9.27	219.70	4,448.53	-498.09	-413.52	451.41	0.00	0.00	0.00
4,600.00	9.27	219.70	4,547.22	-510.48	-423.81	462.65	0.00	0.00	0.00

Hewlett-Packard

Planning Report

Database:	EDM 5000.14 Single User Db	Local Co-ordinate Reference:	Well BOST FARM 32N-11C-L
Company:	SRC ENERGY	TVD Reference:	RKB = 20' @ 4898.00usft (PD 462)
Project:	WELD COUNTY (NAD83, TRUE NORTH)	MD Reference:	RKB = 20' @ 4898.00usft (PD 462)
Site:	5N-66W-07 BOST FARM 5-7 PAD	North Reference:	True
Well:	BOST FARM 32N-11C-L	Survey Calculation Method:	Minimum Curvature
Wellbore:	Wellbore #1		
Design:	Design #1		

Planned Survey										
Measured Depth (usft)	Inclination (°)	Azimuth (°)	Vertical Depth (usft)	+N/-S (usft)	+E/-W (usft)	Vertical Section (usft)	Dogleg Rate (°/100usft)	Build Rate (°/100usft)	Turn Rate (°/100usft)	
4,700.00	9.27	219.70	4,645.92	-522.87	-434.10	473.88	0.00	0.00	0.00	
4,800.00	9.27	219.70	4,744.61	-535.27	-444.39	485.11	0.00	0.00	0.00	
4,900.00	9.27	219.70	4,843.31	-547.66	-454.68	496.34	0.00	0.00	0.00	
5,000.00	9.27	219.70	4,942.00	-560.06	-464.97	507.58	0.00	0.00	0.00	
5,100.00	9.27	219.70	5,040.69	-572.45	-475.26	518.81	0.00	0.00	0.00	
5,200.00	9.27	219.70	5,139.39	-584.84	-485.55	530.04	0.00	0.00	0.00	
5,300.00	9.27	219.70	5,238.08	-597.24	-495.84	541.27	0.00	0.00	0.00	
5,400.00	9.27	219.70	5,336.78	-609.63	-506.13	552.51	0.00	0.00	0.00	
5,500.00	9.27	219.70	5,435.47	-622.03	-516.42	563.74	0.00	0.00	0.00	
5,600.00	9.27	219.70	5,534.16	-634.42	-526.71	574.97	0.00	0.00	0.00	
5,700.00	9.27	219.70	5,632.86	-646.81	-537.00	586.21	0.00	0.00	0.00	
5,800.00	9.27	219.70	5,731.55	-659.21	-547.29	597.44	0.00	0.00	0.00	
5,900.00	9.27	219.70	5,830.25	-671.60	-557.58	608.67	0.00	0.00	0.00	
6,000.00	9.27	219.70	5,928.94	-684.00	-567.86	619.90	0.00	0.00	0.00	
6,100.00	9.27	219.70	6,027.63	-696.39	-578.15	631.14	0.00	0.00	0.00	
6,200.00	9.27	219.70	6,126.33	-708.78	-588.44	642.37	0.00	0.00	0.00	
6,300.00	9.27	219.70	6,225.02	-721.18	-598.73	653.60	0.00	0.00	0.00	
6,400.00	9.27	219.70	6,323.72	-733.57	-609.02	664.83	0.00	0.00	0.00	
6,500.00	9.27	219.70	6,422.41	-745.97	-619.31	676.07	0.00	0.00	0.00	
6,560.10	9.27	219.70	6,481.73	-753.42	-625.50	682.82	0.00	0.00	0.00	
KOP @ 6560.10ft :: DLS = 9°/100'										
6,600.00	11.88	233.25	6,520.95	-758.35	-630.84	688.54	9.00	6.55	33.95	
6,650.00	15.71	243.30	6,569.51	-764.47	-641.02	699.16	9.00	7.65	20.11	
6,700.00	19.81	249.39	6,617.12	-770.50	-655.01	713.58	9.00	8.21	12.18	
6,750.00	24.06	253.43	6,663.49	-776.39	-672.71	731.69	9.00	8.48	8.08	
6,800.00	28.37	256.31	6,708.34	-782.12	-694.03	753.40	9.00	8.64	5.76	
6,850.00	32.74	258.48	6,751.39	-787.63	-718.84	778.56	9.00	8.73	4.34	
6,900.00	37.13	260.19	6,792.37	-792.91	-746.97	807.02	9.00	8.79	3.42	
6,950.00	41.54	261.58	6,831.03	-797.91	-778.25	838.60	9.00	8.83	2.79	
7,000.00	45.97	262.75	6,867.14	-802.61	-812.50	873.11	9.00	8.85	2.34	
7,050.00	50.41	263.76	6,900.47	-806.97	-849.50	910.34	9.00	8.87	2.01	
7,100.00	54.85	264.64	6,930.81	-810.98	-889.02	950.05	9.00	8.89	1.77	
7,150.00	59.30	265.43	6,957.98	-814.60	-930.82	992.01	9.00	8.90	1.59	
7,200.00	63.76	266.16	6,981.81	-817.82	-974.65	1,035.95	9.00	8.91	1.45	
7,250.00	68.21	266.83	7,002.15	-820.61	-1,020.22	1,081.60	9.00	8.92	1.34	
7,300.00	72.67	267.46	7,018.89	-822.96	-1,067.27	1,128.69	9.00	8.92	1.26	
7,350.00	77.14	268.05	7,031.90	-824.84	-1,115.49	1,176.91	9.00	8.93	1.20	
7,400.00	81.60	268.63	7,041.12	-826.26	-1,164.60	1,225.98	9.00	8.93	1.16	
7,450.00	86.07	269.20	7,046.49	-827.20	-1,214.29	1,275.59	9.00	8.93	1.13	
7,496.99	90.26	269.72	7,048.00	-827.64	-1,261.24	1,322.43	9.00	8.93	1.12	
End Build @ 7496.99ft - 5 1/2"										
7,500.00	90.26	269.72	7,047.98	-827.66	-1,264.25	1,325.43	0.00	0.00	0.00	
7,600.00	90.26	269.72	7,047.53	-828.14	-1,364.25	1,425.16	0.00	0.00	0.00	
7,700.00	90.26	269.72	7,047.07	-828.62	-1,464.25	1,524.88	0.00	0.00	0.00	
7,800.00	90.26	269.72	7,046.61	-829.10	-1,564.25	1,624.61	0.00	0.00	0.00	
7,900.00	90.26	269.72	7,046.15	-829.59	-1,664.24	1,724.34	0.00	0.00	0.00	
8,000.00	90.26	269.72	7,045.70	-830.07	-1,764.24	1,824.06	0.00	0.00	0.00	
8,100.00	90.26	269.72	7,045.24	-830.55	-1,864.24	1,923.79	0.00	0.00	0.00	
8,200.00	90.26	269.72	7,044.78	-831.04	-1,964.24	2,023.51	0.00	0.00	0.00	
8,300.00	90.26	269.72	7,044.32	-831.52	-2,064.23	2,123.24	0.00	0.00	0.00	
8,400.00	90.26	269.72	7,043.87	-832.00	-2,164.23	2,222.97	0.00	0.00	0.00	
8,500.00	90.26	269.72	7,043.41	-832.48	-2,264.23	2,322.69	0.00	0.00	0.00	
8,600.00	90.26	269.72	7,042.95	-832.97	-2,364.23	2,422.42	0.00	0.00	0.00	
8,700.00	90.26	269.72	7,042.49	-833.45	-2,464.23	2,522.14	0.00	0.00	0.00	

Hewlett-Packard

Planning Report

Database:	EDM 5000.14 Single User Db	Local Co-ordinate Reference:	Well BOST FARM 32N-11C-L
Company:	SRC ENERGY	TVD Reference:	RKB = 20' @ 4898.00usft (PD 462)
Project:	WELD COUNTY (NAD83, TRUE NORTH)	MD Reference:	RKB = 20' @ 4898.00usft (PD 462)
Site:	5N-66W-07 BOST FARM 5-7 PAD	North Reference:	True
Well:	BOST FARM 32N-11C-L	Survey Calculation Method:	Minimum Curvature
Wellbore:	Wellbore #1		
Design:	Design #1		

Planned Survey										
Measured Depth (usft)	Inclination (°)	Azimuth (°)	Vertical Depth (usft)	+N/-S (usft)	+E/-W (usft)	Vertical Section (usft)	Dogleg Rate (°/100usft)	Build Rate (°/100usft)	Turn Rate (°/100usft)	
8,800.00	90.26	269.72	7,042.03	-833.93	-2,564.22	2,621.87	0.00	0.00	0.00	
8,900.00	90.26	269.72	7,041.58	-834.41	-2,664.22	2,721.60	0.00	0.00	0.00	
9,000.00	90.26	269.72	7,041.12	-834.90	-2,764.22	2,821.32	0.00	0.00	0.00	
9,100.00	90.26	269.72	7,040.66	-835.38	-2,864.22	2,921.05	0.00	0.00	0.00	
9,200.00	90.26	269.72	7,040.20	-835.86	-2,964.21	3,020.77	0.00	0.00	0.00	
9,300.00	90.26	269.72	7,039.75	-836.35	-3,064.21	3,120.50	0.00	0.00	0.00	
9,400.00	90.26	269.72	7,039.29	-836.83	-3,164.21	3,220.23	0.00	0.00	0.00	
9,500.00	90.26	269.72	7,038.83	-837.31	-3,264.21	3,319.95	0.00	0.00	0.00	
9,600.00	90.26	269.72	7,038.37	-837.79	-3,364.21	3,419.68	0.00	0.00	0.00	
9,700.00	90.26	269.72	7,037.91	-838.28	-3,464.20	3,519.40	0.00	0.00	0.00	
9,800.00	90.26	269.72	7,037.46	-838.76	-3,564.20	3,619.13	0.00	0.00	0.00	
9,900.00	90.26	269.72	7,037.00	-839.24	-3,664.20	3,718.86	0.00	0.00	0.00	
10,000.00	90.26	269.72	7,036.54	-839.72	-3,764.20	3,818.58	0.00	0.00	0.00	
10,100.00	90.26	269.72	7,036.08	-840.21	-3,864.19	3,918.31	0.00	0.00	0.00	
10,200.00	90.26	269.72	7,035.63	-840.69	-3,964.19	4,018.03	0.00	0.00	0.00	
10,300.00	90.26	269.72	7,035.17	-841.17	-4,064.19	4,117.76	0.00	0.00	0.00	
10,400.00	90.26	269.72	7,034.71	-841.66	-4,164.19	4,217.49	0.00	0.00	0.00	
10,500.00	90.26	269.72	7,034.25	-842.14	-4,264.19	4,317.21	0.00	0.00	0.00	
10,600.00	90.26	269.72	7,033.80	-842.62	-4,364.18	4,416.94	0.00	0.00	0.00	
10,700.00	90.26	269.72	7,033.34	-843.10	-4,464.18	4,516.66	0.00	0.00	0.00	
10,800.00	90.26	269.72	7,032.88	-843.59	-4,564.18	4,616.39	0.00	0.00	0.00	
10,900.00	90.26	269.72	7,032.42	-844.07	-4,664.18	4,716.12	0.00	0.00	0.00	
11,000.00	90.26	269.72	7,031.96	-844.55	-4,764.18	4,815.84	0.00	0.00	0.00	
11,100.00	90.26	269.72	7,031.51	-845.03	-4,864.17	4,915.57	0.00	0.00	0.00	
11,200.00	90.26	269.72	7,031.05	-845.52	-4,964.17	5,015.29	0.00	0.00	0.00	
11,300.00	90.26	269.72	7,030.59	-846.00	-5,064.17	5,115.02	0.00	0.00	0.00	
11,400.00	90.26	269.72	7,030.13	-846.48	-5,164.17	5,214.75	0.00	0.00	0.00	
11,500.00	90.26	269.72	7,029.68	-846.96	-5,264.16	5,314.47	0.00	0.00	0.00	
11,600.00	90.26	269.72	7,029.22	-847.45	-5,364.16	5,414.20	0.00	0.00	0.00	
11,700.00	90.26	269.72	7,028.76	-847.93	-5,464.16	5,513.92	0.00	0.00	0.00	
11,800.00	90.26	269.72	7,028.30	-848.41	-5,564.16	5,613.65	0.00	0.00	0.00	
11,900.00	90.26	269.72	7,027.84	-848.90	-5,664.16	5,713.38	0.00	0.00	0.00	
12,000.00	90.26	269.72	7,027.39	-849.38	-5,764.15	5,813.10	0.00	0.00	0.00	
12,100.00	90.26	269.72	7,026.93	-849.86	-5,864.15	5,912.83	0.00	0.00	0.00	
12,200.00	90.26	269.72	7,026.47	-850.34	-5,964.15	6,012.55	0.00	0.00	0.00	
12,300.00	90.26	269.72	7,026.01	-850.83	-6,064.15	6,112.28	0.00	0.00	0.00	
12,400.00	90.26	269.72	7,025.56	-851.31	-6,164.14	6,212.01	0.00	0.00	0.00	
12,500.00	90.26	269.72	7,025.10	-851.79	-6,264.14	6,311.73	0.00	0.00	0.00	
12,600.00	90.26	269.72	7,024.64	-852.27	-6,364.14	6,411.46	0.00	0.00	0.00	
12,700.00	90.26	269.72	7,024.18	-852.76	-6,464.14	6,511.18	0.00	0.00	0.00	
12,800.00	90.26	269.72	7,023.73	-853.24	-6,564.14	6,610.91	0.00	0.00	0.00	
12,900.00	90.26	269.72	7,023.27	-853.72	-6,664.13	6,710.64	0.00	0.00	0.00	
13,000.00	90.26	269.72	7,022.81	-854.21	-6,764.13	6,810.36	0.00	0.00	0.00	
13,100.00	90.26	269.72	7,022.35	-854.69	-6,864.13	6,910.09	0.00	0.00	0.00	
13,200.00	90.26	269.72	7,021.89	-855.17	-6,964.13	7,009.81	0.00	0.00	0.00	
13,300.00	90.26	269.72	7,021.44	-855.65	-7,064.12	7,109.54	0.00	0.00	0.00	
13,400.00	90.26	269.72	7,020.98	-856.14	-7,164.12	7,209.27	0.00	0.00	0.00	
13,500.00	90.26	269.72	7,020.52	-856.62	-7,264.12	7,308.99	0.00	0.00	0.00	
13,600.00	90.26	269.72	7,020.06	-857.10	-7,364.12	7,408.72	0.00	0.00	0.00	
13,700.00	90.26	269.72	7,019.61	-857.58	-7,464.12	7,508.44	0.00	0.00	0.00	
13,800.00	90.26	269.72	7,019.15	-858.07	-7,564.11	7,608.17	0.00	0.00	0.00	
13,900.00	90.26	269.72	7,018.69	-858.55	-7,664.11	7,707.90	0.00	0.00	0.00	
14,000.00	90.26	269.72	7,018.23	-859.03	-7,764.11	7,807.62	0.00	0.00	0.00	
14,100.00	90.26	269.72	7,017.77	-859.51	-7,864.11	7,907.35	0.00	0.00	0.00	

Hewlett-Packard

Planning Report

Database:	EDM 5000.14 Single User Db	Local Co-ordinate Reference:	Well BOST FARM 32N-11C-L
Company:	SRC ENERGY	TVD Reference:	RKB = 20' @ 4898.00usft (PD 462)
Project:	WELD COUNTY (NAD83, TRUE NORTH)	MD Reference:	RKB = 20' @ 4898.00usft (PD 462)
Site:	5N-66W-07 BOST FARM 5-7 PAD	North Reference:	True
Well:	BOST FARM 32N-11C-L	Survey Calculation Method:	Minimum Curvature
Wellbore:	Wellbore #1		
Design:	Design #1		

Planned Survey									
Measured Depth (usft)	Inclination (°)	Azimuth (°)	Vertical Depth (usft)	+N/-S (usft)	+E/-W (usft)	Vertical Section (usft)	Dogleg Rate (°/100usft)	Build Rate (°/100usft)	Turn Rate (°/100usft)
14,200.00	90.26	269.72	7,017.32	-860.00	-7,964.10	8,007.07	0.00	0.00	0.00
14,300.00	90.26	269.72	7,016.86	-860.48	-8,064.10	8,106.80	0.00	0.00	0.00
14,400.00	90.26	269.72	7,016.40	-860.96	-8,164.10	8,206.53	0.00	0.00	0.00
14,500.00	90.26	269.72	7,015.94	-861.45	-8,264.10	8,306.25	0.00	0.00	0.00
14,600.00	90.26	269.72	7,015.49	-861.93	-8,364.10	8,405.98	0.00	0.00	0.00
14,700.00	90.26	269.72	7,015.03	-862.41	-8,464.09	8,505.70	0.00	0.00	0.00
14,800.00	90.26	269.72	7,014.57	-862.89	-8,564.09	8,605.43	0.00	0.00	0.00
14,900.00	90.26	269.72	7,014.11	-863.38	-8,664.09	8,705.15	0.00	0.00	0.00
15,000.00	90.26	269.72	7,013.65	-863.86	-8,764.09	8,804.88	0.00	0.00	0.00
15,100.00	90.26	269.72	7,013.20	-864.34	-8,864.08	8,904.61	0.00	0.00	0.00
15,200.00	90.26	269.72	7,012.74	-864.82	-8,964.08	9,004.33	0.00	0.00	0.00
15,300.00	90.26	269.72	7,012.28	-865.31	-9,064.08	9,104.06	0.00	0.00	0.00
15,400.00	90.26	269.72	7,011.82	-865.79	-9,164.08	9,203.78	0.00	0.00	0.00
15,500.00	90.26	269.72	7,011.37	-866.27	-9,264.08	9,303.51	0.00	0.00	0.00
15,600.00	90.26	269.72	7,010.91	-866.76	-9,364.07	9,403.24	0.00	0.00	0.00
15,700.00	90.26	269.72	7,010.45	-867.24	-9,464.07	9,502.96	0.00	0.00	0.00
15,800.00	90.26	269.72	7,009.99	-867.72	-9,564.07	9,602.69	0.00	0.00	0.00
15,900.00	90.26	269.72	7,009.54	-868.20	-9,664.07	9,702.41	0.00	0.00	0.00
16,000.00	90.26	269.72	7,009.08	-868.69	-9,764.06	9,802.14	0.00	0.00	0.00
16,100.00	90.26	269.72	7,008.62	-869.17	-9,864.06	9,901.87	0.00	0.00	0.00
16,200.00	90.26	269.72	7,008.16	-869.65	-9,964.06	10,001.59	0.00	0.00	0.00
16,300.00	90.26	269.72	7,007.70	-870.13	-10,064.06	10,101.32	0.00	0.00	0.00
16,400.00	90.26	269.72	7,007.25	-870.62	-10,164.06	10,201.04	0.00	0.00	0.00
16,500.00	90.26	269.72	7,006.79	-871.10	-10,264.05	10,300.77	0.00	0.00	0.00
16,600.00	90.26	269.72	7,006.33	-871.58	-10,364.05	10,400.50	0.00	0.00	0.00
16,700.00	90.26	269.72	7,005.87	-872.07	-10,464.05	10,500.22	0.00	0.00	0.00
16,800.00	90.26	269.72	7,005.42	-872.55	-10,564.05	10,599.95	0.00	0.00	0.00
16,900.00	90.26	269.72	7,004.96	-873.03	-10,664.04	10,699.67	0.00	0.00	0.00
17,000.00	90.26	269.72	7,004.50	-873.51	-10,764.04	10,799.40	0.00	0.00	0.00
17,100.00	90.26	269.72	7,004.04	-874.00	-10,864.04	10,899.13	0.00	0.00	0.00
17,200.00	90.26	269.72	7,003.58	-874.48	-10,964.04	10,998.85	0.00	0.00	0.00
17,300.00	90.26	269.72	7,003.13	-874.96	-11,064.04	11,098.58	0.00	0.00	0.00
17,327.69	90.26	269.72	7,003.00	-875.09	-11,091.72	11,126.19	0.00	0.00	0.00
TD Well @ 17327.69ft									

Casing Points					
Measured Depth (usft)	Vertical Depth (usft)		Name	Casing Diameter (")	Hole Diameter (")
1,765.76	1,750.00	9 5/8"		9-5/8	13-1/2
7,496.99	7,048.00	5 1/2"		5-1/2	8-1/2

Hewlett-Packard

Planning Report

Database:	EDM 5000.14 Single User Db	Local Co-ordinate Reference:	Well BOST FARM 32N-11C-L
Company:	SRC ENERGY	TVD Reference:	RKB = 20' @ 4898.00usft (PD 462)
Project:	WELD COUNTY (NAD83, TRUE NORTH)	MD Reference:	RKB = 20' @ 4898.00usft (PD 462)
Site:	5N-66W-07 BOST FARM 5-7 PAD	North Reference:	True
Well:	BOST FARM 32N-11C-L	Survey Calculation Method:	Minimum Curvature
Wellbore:	Wellbore #1		
Design:	Design #1		

Plan Annotations				
Measured Depth (usft)	Vertical Depth (usft)	Local Coordinates		Comment
		+N/-S (usft)	+E/-W (usft)	
250.00	250.00	0.00	0.00	Begin Nudge @ 250.00ft
713.50	711.48	-28.79	-23.90	End Nudge @ 713.50ft
6,560.10	6,481.73	-753.42	-625.50	KOP @ 6560.10ft :: DLS = 9°/100'
7,496.99	7,048.00	-827.64	-1,261.24	End Build @ 7496.99ft
17,327.69	7,003.00	-875.09	-11,091.72	TD Well @ 17327.69ft