

# **SRC ENERGY**

**WELD COUNTY (NAD83, TRUE NORTH)**

**5N-66W-07 BOST FARM 5-7 PAD**

**BOST FARM 5C-11-L**

**Wellbore #1**

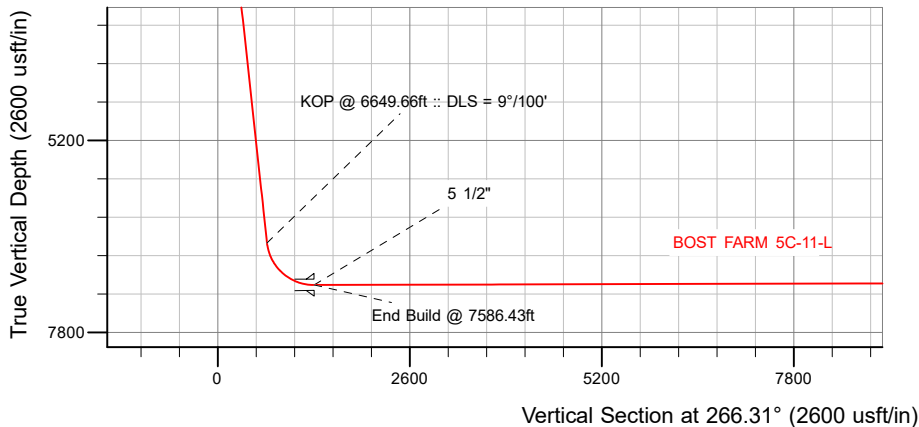
**Plan: Design #1**

## **Standard Planning Report**

**28 December, 2017**

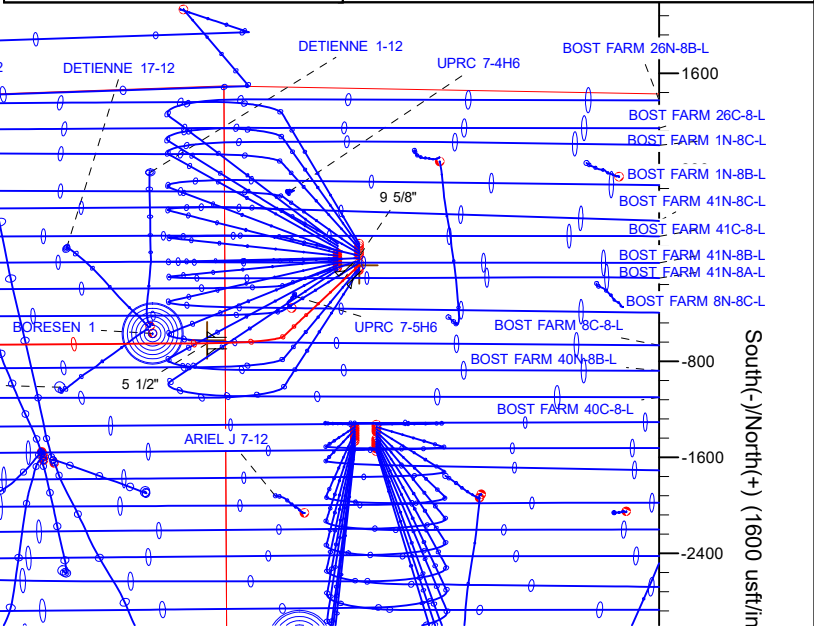
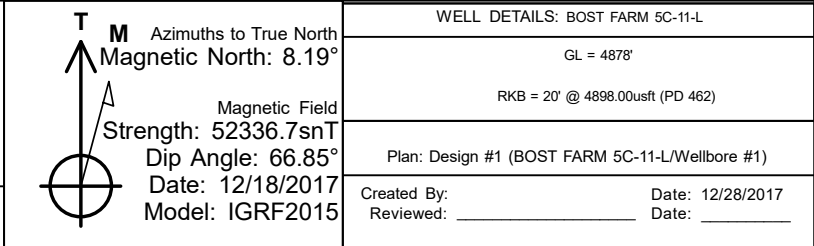
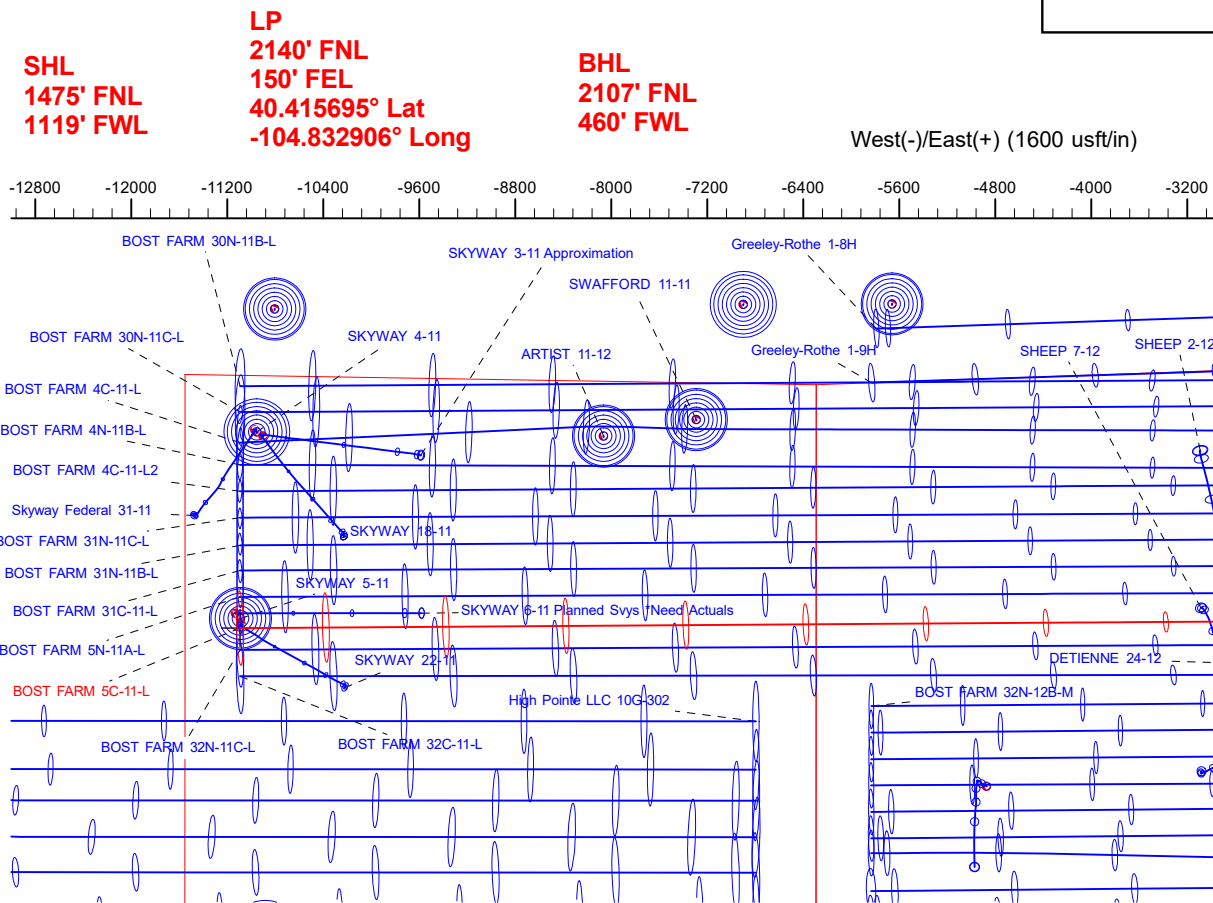
# SRC ENERGY

CASING DETAILS			
TVD	MD	Name	Size
1750.00	1762.12	9 5/8"	9-5/8
7159.00	7586.43	5 1/2"	5-1/2



SECTION DETAILS										
Sec	MD	Inc	Azi	TVD	+N/-S	+E/-W	Dleg	TFace	VSect	Target
1	0.00	0.00	0.00	0.00	0.00	0.00	0.00	0.00	0.00	
2	250.00	0.00	0.00	250.00	0.00	0.00	0.00	0.00	0.00	
3	650.00	8.00	226.80	648.70	-19.09	-20.32	2.00	226.80	21.51	
4	6649.66	8.00	226.80	6589.97	-590.68	-629.01	0.00	0.00	665.67	
5	7586.43	90.17	269.62	7159.00	-649.39	-1263.80	9.00	43.08	1302.92	
6	17414.80	90.17	269.62	7130.00	-714.37	-11091.90	0.00	0.0011114.88		BOST FARM 5C-11-L_BHL

WELLBORE TARGET DETAILS (LAT/LONG)					
Name	TVD	+N/-S	+E/-W	Latitude	Longitude
BOST FARM 5C-11-L_SHL	0.00	0.00	0.00	40.417478	-104.828367
BOST FARM 5C-11-L_BHL	7130.00	-714.37	-11091.90	40.415510	-104.868202



# Hewlett-Packard

## Planning Report

<b>Database:</b>	EDM 5000.14 Single User Db	<b>Local Co-ordinate Reference:</b>	Well BOST FARM 5C-11-L
<b>Company:</b>	SRC ENERGY	<b>TVD Reference:</b>	RKB = 20' @ 4898.00usft (PD 462)
<b>Project:</b>	WELD COUNTY (NAD83, TRUE NORTH)	<b>MD Reference:</b>	RKB = 20' @ 4898.00usft (PD 462)
<b>Site:</b>	5N-66W-07 BOST FARM 5-7 PAD	<b>North Reference:</b>	True
<b>Well:</b>	BOST FARM 5C-11-L	<b>Survey Calculation Method:</b>	Minimum Curvature
<b>Wellbore:</b>	Wellbore #1		
<b>Design:</b>	Design #1		

<b>Project</b>	WELD COUNTY (NAD83, TRUE NORTH)		
<b>Map System:</b>	US State Plane 1983	<b>System Datum:</b>	Mean Sea Level
<b>Geo Datum:</b>	North American Datum 1983		
<b>Map Zone:</b>	Colorado Northern Zone		

Site		5N-66W-07 BOST FARM 5-7 PAD			
Site Position:		Northing:	1,395,815.76 usft	Latitude:	40.417972
From:	Lat/Long	Easting:	3,187,006.76 usft	Longitude:	-104.828362
Position Uncertainty:	0.00 usft	Slot Radius:	13-3/16 "	Grid Convergence:	0.43 °

Well		BOST FARM 5C-11-L				
Well Position	+N/-S	-179.97 usft	Northing:	1,395,635.79 usft	Latitude:	40.417478
	+E/-W	-1.39 usft	Easting:	3,187,006.73 usft	Longitude:	-104.828367
Position Uncertainty		3.28 usft	Wellhead Elevation:		Ground Level:	4,878.00 usft

<b>Wellbore</b>	Wellbore #1				
<b>Magnetics</b>	<b>Model Name</b>	<b>Sample Date</b>	<b>Declination (°)</b>	<b>Dip Angle (°)</b>	<b>Field Strength (nT)</b>
	IGRF2015	12/18/2017	8.19	66.85	52,336.70633445

<b>Design</b>	Design #1				
<b>Audit Notes:</b>					
<b>Version:</b>		<b>Phase:</b>	PLAN	<b>Tie On Depth:</b>	0.00
<b>Vertical Section:</b>	<b>Depth From (TVD) (usft)</b>	<b>+N/-S (usft)</b>	<b>+E/-W (usft)</b>	<b>Direction (°)</b>	
	0.00	0.00	0.00	266.31	

<b>Plan Survey Tool Program</b>	<b>Date</b>	12/27/2017			
<b>Depth From (usft)</b>	<b>Depth To (usft)</b>	<b>Survey (Wellbore)</b>	<b>Tool Name</b>	<b>Remarks</b>	
1	0.00	1,750.00	Design #1 (Wellbore #1)	SRC Energy_ISCWSA REV 2	
				Fixed:v2:crustal field declinatio	
2	1,750.00	17,414.80	Design #1 (Wellbore #1)	SRC Energy_ISCWSA REV 2	
				Fixed:v2:crustal field declinatio	

<b>Plan Sections</b>										
<b>Measured Depth (usft)</b>	<b>Inclination (°)</b>	<b>Azimuth (°)</b>	<b>Vertical Depth (usft)</b>	<b>+N/-S (usft)</b>	<b>+E/-W (usft)</b>	<b>Dogleg Rate (°/100usft)</b>	<b>Build Rate (°/100usft)</b>	<b>Turn Rate (°/100usft)</b>	<b>TFO (°)</b>	<b>Target</b>
0.00	0.00	0.00	0.00	0.00	0.00	0.00	0.00	0.00	0.00	
250.00	0.00	0.00	250.00	0.00	0.00	0.00	0.00	0.00	0.00	
650.00	8.00	226.80	648.70	-19.09	-20.32	2.00	2.00	0.00	226.80	
6,649.66	8.00	226.80	6,589.97	-590.68	-629.01	0.00	0.00	0.00	0.00	
7,586.43	90.17	269.62	7,159.00	-649.39	-1,263.80	9.00	8.77	4.57	43.08	
17,414.80	90.17	269.62	7,130.00	-714.37	-11,091.90	0.00	0.00	0.00	0.00	BOST FARM 5C-11-L

# Hewlett-Packard

## Planning Report

<b>Database:</b>	EDM 5000.14 Single User Db	<b>Local Co-ordinate Reference:</b>	Well BOST FARM 5C-11-L
<b>Company:</b>	SRC ENERGY	<b>TVD Reference:</b>	RKB = 20' @ 4898.00usft (PD 462)
<b>Project:</b>	WELD COUNTY (NAD83, TRUE NORTH)	<b>MD Reference:</b>	RKB = 20' @ 4898.00usft (PD 462)
<b>Site:</b>	5N-66W-07 BOST FARM 5-7 PAD	<b>North Reference:</b>	True
<b>Well:</b>	BOST FARM 5C-11-L	<b>Survey Calculation Method:</b>	Minimum Curvature
<b>Wellbore:</b>	Wellbore #1		
<b>Design:</b>	Design #1		

Planned Survey									
Measured Depth (usft)	Inclination (°)	Azimuth (°)	Vertical Depth (usft)	+N/-S (usft)	+E/-W (usft)	Vertical Section (usft)	Dogleg Rate (°/100usft)	Build Rate (°/100usft)	Turn Rate (°/100usft)
0.00	0.00	0.00	0.00	0.00	0.00	0.00	0.00	0.00	0.00
100.00	0.00	0.00	100.00	0.00	0.00	0.00	0.00	0.00	0.00
200.00	0.00	0.00	200.00	0.00	0.00	0.00	0.00	0.00	0.00
250.00	0.00	0.00	250.00	0.00	0.00	0.00	0.00	0.00	0.00
Begin Nudge @ 250.00ft									
300.00	1.00	226.80	300.00	-0.30	-0.32	0.34	2.00	2.00	0.00
400.00	3.00	226.80	399.93	-2.69	-2.86	3.03	2.00	2.00	0.00
500.00	5.00	226.80	499.68	-7.46	-7.95	8.41	2.00	2.00	0.00
600.00	7.00	226.80	599.13	-14.62	-15.57	16.47	2.00	2.00	0.00
650.00	8.00	226.80	648.70	-19.09	-20.32	21.51	2.00	2.00	0.00
End Nudge @ 650.00ft									
700.00	8.00	226.80	698.21	-23.85	-25.40	26.88	0.00	0.00	0.00
800.00	8.00	226.80	797.24	-33.38	-35.54	37.61	0.00	0.00	0.00
900.00	8.00	226.80	896.27	-42.90	-45.69	48.35	0.00	0.00	0.00
1,000.00	8.00	226.80	995.30	-52.43	-55.83	59.09	0.00	0.00	0.00
1,100.00	8.00	226.80	1,094.32	-61.96	-65.98	69.82	0.00	0.00	0.00
1,200.00	8.00	226.80	1,193.35	-71.48	-76.12	80.56	0.00	0.00	0.00
1,300.00	8.00	226.80	1,292.38	-81.01	-86.27	91.30	0.00	0.00	0.00
1,400.00	8.00	226.80	1,391.40	-90.54	-96.41	102.03	0.00	0.00	0.00
1,500.00	8.00	226.80	1,490.43	-100.07	-106.56	112.77	0.00	0.00	0.00
1,600.00	8.00	226.80	1,589.46	-109.59	-116.70	123.51	0.00	0.00	0.00
1,700.00	8.00	226.80	1,688.48	-119.12	-126.85	134.24	0.00	0.00	0.00
1,762.12	8.00	226.80	1,750.00	-125.04	-133.15	140.91	0.00	0.00	0.00
9 5/8"									
1,800.00	8.00	226.80	1,787.51	-128.65	-136.99	144.98	0.00	0.00	0.00
1,900.00	8.00	226.80	1,886.54	-138.17	-147.14	155.72	0.00	0.00	0.00
2,000.00	8.00	226.80	1,985.56	-147.70	-157.28	166.45	0.00	0.00	0.00
2,100.00	8.00	226.80	2,084.59	-157.23	-167.43	177.19	0.00	0.00	0.00
2,200.00	8.00	226.80	2,183.62	-166.75	-177.58	187.93	0.00	0.00	0.00
2,300.00	8.00	226.80	2,282.64	-176.28	-187.72	198.66	0.00	0.00	0.00
2,400.00	8.00	226.80	2,381.67	-185.81	-197.87	209.40	0.00	0.00	0.00
2,500.00	8.00	226.80	2,480.70	-195.34	-208.01	220.14	0.00	0.00	0.00
2,600.00	8.00	226.80	2,579.72	-204.86	-218.16	230.87	0.00	0.00	0.00
2,700.00	8.00	226.80	2,678.75	-214.39	-228.30	241.61	0.00	0.00	0.00
2,800.00	8.00	226.80	2,777.78	-223.92	-238.45	252.35	0.00	0.00	0.00
2,900.00	8.00	226.80	2,876.80	-233.44	-248.59	263.08	0.00	0.00	0.00
3,000.00	8.00	226.80	2,975.83	-242.97	-258.74	273.82	0.00	0.00	0.00
3,100.00	8.00	226.80	3,074.86	-252.50	-268.88	284.56	0.00	0.00	0.00
3,200.00	8.00	226.80	3,173.89	-262.03	-279.03	295.29	0.00	0.00	0.00
3,300.00	8.00	226.80	3,272.91	-271.55	-289.17	306.03	0.00	0.00	0.00
3,400.00	8.00	226.80	3,371.94	-281.08	-299.32	316.77	0.00	0.00	0.00
3,500.00	8.00	226.80	3,470.97	-290.61	-309.46	327.50	0.00	0.00	0.00
3,600.00	8.00	226.80	3,569.99	-300.13	-319.61	338.24	0.00	0.00	0.00
3,700.00	8.00	226.80	3,669.02	-309.66	-329.75	348.98	0.00	0.00	0.00
3,800.00	8.00	226.80	3,768.05	-319.19	-339.90	359.71	0.00	0.00	0.00
3,900.00	8.00	226.80	3,867.07	-328.71	-350.05	370.45	0.00	0.00	0.00
4,000.00	8.00	226.80	3,966.10	-338.24	-360.19	381.19	0.00	0.00	0.00
4,100.00	8.00	226.80	4,065.13	-347.77	-370.34	391.92	0.00	0.00	0.00
4,200.00	8.00	226.80	4,164.15	-357.30	-380.48	402.66	0.00	0.00	0.00
4,300.00	8.00	226.80	4,263.18	-366.82	-390.63	413.40	0.00	0.00	0.00
4,400.00	8.00	226.80	4,362.21	-376.35	-400.77	424.13	0.00	0.00	0.00
4,500.00	8.00	226.80	4,461.23	-385.88	-410.92	434.87	0.00	0.00	0.00
4,600.00	8.00	226.80	4,560.26	-395.40	-421.06	445.60	0.00	0.00	0.00

# Hewlett-Packard

## Planning Report

<b>Database:</b>	EDM 5000.14 Single User Db	<b>Local Co-ordinate Reference:</b>	Well BOST FARM 5C-11-L
<b>Company:</b>	SRC ENERGY	<b>TVD Reference:</b>	RKB = 20' @ 4898.00usft (PD 462)
<b>Project:</b>	WELD COUNTY (NAD83, TRUE NORTH)	<b>MD Reference:</b>	RKB = 20' @ 4898.00usft (PD 462)
<b>Site:</b>	5N-66W-07 BOST FARM 5-7 PAD	<b>North Reference:</b>	True
<b>Well:</b>	BOST FARM 5C-11-L	<b>Survey Calculation Method:</b>	Minimum Curvature
<b>Wellbore:</b>	Wellbore #1		
<b>Design:</b>	Design #1		

Planned Survey									
Measured Depth (usft)	Inclination (°)	Azimuth (°)	Vertical Depth (usft)	+N/-S (usft)	+E/-W (usft)	Vertical Section (usft)	Dogleg Rate (°/100usft)	Build Rate (°/100usft)	Turn Rate (°/100usft)
4,700.00	8.00	226.80	4,659.29	-404.93	-431.21	456.34	0.00	0.00	0.00
4,800.00	8.00	226.80	4,758.31	-414.46	-441.35	467.08	0.00	0.00	0.00
4,900.00	8.00	226.80	4,857.34	-423.98	-451.50	477.81	0.00	0.00	0.00
5,000.00	8.00	226.80	4,956.37	-433.51	-461.64	488.55	0.00	0.00	0.00
5,100.00	8.00	226.80	5,055.39	-443.04	-471.79	499.29	0.00	0.00	0.00
5,200.00	8.00	226.80	5,154.42	-452.57	-481.93	510.02	0.00	0.00	0.00
5,300.00	8.00	226.80	5,253.45	-462.09	-492.08	520.76	0.00	0.00	0.00
5,400.00	8.00	226.80	5,352.48	-471.62	-502.22	531.50	0.00	0.00	0.00
5,500.00	8.00	226.80	5,451.50	-481.15	-512.37	542.23	0.00	0.00	0.00
5,600.00	8.00	226.80	5,550.53	-490.67	-522.52	552.97	0.00	0.00	0.00
5,700.00	8.00	226.80	5,649.56	-500.20	-532.66	563.71	0.00	0.00	0.00
5,800.00	8.00	226.80	5,748.58	-509.73	-542.81	574.44	0.00	0.00	0.00
5,900.00	8.00	226.80	5,847.61	-519.26	-552.95	585.18	0.00	0.00	0.00
6,000.00	8.00	226.80	5,946.64	-528.78	-563.10	595.92	0.00	0.00	0.00
6,100.00	8.00	226.80	6,045.66	-538.31	-573.24	606.65	0.00	0.00	0.00
6,200.00	8.00	226.80	6,144.69	-547.84	-583.39	617.39	0.00	0.00	0.00
6,300.00	8.00	226.80	6,243.72	-557.36	-593.53	628.13	0.00	0.00	0.00
6,400.00	8.00	226.80	6,342.74	-566.89	-603.68	638.86	0.00	0.00	0.00
6,500.00	8.00	226.80	6,441.77	-576.42	-613.82	649.60	0.00	0.00	0.00
6,600.00	8.00	226.80	6,540.80	-585.94	-623.97	660.34	0.00	0.00	0.00
6,649.66	8.00	226.80	6,589.97	-590.68	-629.01	665.67	0.00	0.00	0.00
<b>KOP @ 6649.66ft :: DLS = 9°/100'</b>									
6,700.00	11.72	242.20	6,639.57	-595.46	-636.09	673.04	9.00	7.39	30.60
6,750.00	15.84	249.93	6,688.12	-600.17	-646.99	684.23	9.00	8.23	15.46
6,800.00	20.12	254.49	6,735.67	-604.82	-661.69	699.20	9.00	8.56	9.12
6,850.00	24.47	257.49	6,781.93	-609.36	-680.10	717.86	9.00	8.71	6.00
6,900.00	28.87	259.63	6,826.60	-613.78	-702.09	740.09	9.00	8.79	4.27
6,950.00	33.29	261.24	6,869.41	-618.04	-727.54	765.76	9.00	8.85	3.23
7,000.00	37.73	262.51	6,910.10	-622.13	-756.28	794.71	9.00	8.88	2.54
7,050.00	42.18	263.56	6,948.42	-626.00	-788.15	826.75	9.00	8.90	2.08
7,100.00	46.64	264.43	6,984.13	-629.66	-822.94	861.70	9.00	8.92	1.75
7,150.00	51.10	265.19	7,017.01	-633.05	-860.43	899.34	9.00	8.93	1.51
7,200.00	55.57	265.85	7,046.86	-636.18	-900.41	939.44	9.00	8.94	1.33
7,250.00	60.04	266.45	7,073.49	-639.01	-942.62	981.74	9.00	8.94	1.20
7,300.00	64.52	267.00	7,096.75	-641.54	-986.79	1,025.99	9.00	8.95	1.09
7,350.00	68.99	267.50	7,116.48	-643.74	-1,032.67	1,071.91	9.00	8.95	1.01
7,400.00	73.47	267.98	7,132.56	-645.60	-1,079.96	1,119.22	9.00	8.95	0.96
7,450.00	77.95	268.44	7,144.90	-647.11	-1,128.38	1,167.64	9.00	8.96	0.91
7,500.00	82.43	268.88	7,153.42	-648.27	-1,177.62	1,216.85	9.00	8.96	0.88
7,550.00	86.91	269.31	7,158.07	-649.05	-1,227.38	1,266.56	9.00	8.96	0.86
7,586.43	90.17	269.62	7,159.00	-649.39	-1,263.80	1,302.92	9.00	8.96	0.86
<b>End Build @ 7586.43ft - 5 1/2"</b>									
7,600.00	90.17	269.62	7,158.96	-649.48	-1,277.37	1,316.47	0.00	0.00	0.00
7,700.00	90.17	269.62	7,158.66	-650.14	-1,377.36	1,416.30	0.00	0.00	0.00
7,800.00	90.17	269.62	7,158.37	-650.81	-1,477.36	1,516.13	0.00	0.00	0.00
7,900.00	90.17	269.62	7,158.07	-651.47	-1,577.36	1,615.97	0.00	0.00	0.00
8,000.00	90.17	269.62	7,157.78	-652.13	-1,677.35	1,715.80	0.00	0.00	0.00
8,100.00	90.17	269.62	7,157.48	-652.79	-1,777.35	1,815.63	0.00	0.00	0.00
8,200.00	90.17	269.62	7,157.19	-653.45	-1,877.35	1,915.47	0.00	0.00	0.00
8,300.00	90.17	269.62	7,156.89	-654.11	-1,977.35	2,015.30	0.00	0.00	0.00
8,400.00	90.17	269.62	7,156.60	-654.77	-2,077.34	2,115.13	0.00	0.00	0.00
8,500.00	90.17	269.62	7,156.30	-655.43	-2,177.34	2,214.97	0.00	0.00	0.00
8,600.00	90.17	269.62	7,156.01	-656.09	-2,277.34	2,314.80	0.00	0.00	0.00
8,700.00	90.17	269.62	7,155.71	-656.76	-2,377.34	2,414.63	0.00	0.00	0.00

# Hewlett-Packard

## Planning Report

<b>Database:</b>	EDM 5000.14 Single User Db	<b>Local Co-ordinate Reference:</b>	Well BOST FARM 5C-11-L
<b>Company:</b>	SRC ENERGY	<b>TVD Reference:</b>	RKB = 20' @ 4898.00usft (PD 462)
<b>Project:</b>	WELD COUNTY (NAD83, TRUE NORTH)	<b>MD Reference:</b>	RKB = 20' @ 4898.00usft (PD 462)
<b>Site:</b>	5N-66W-07 BOST FARM 5-7 PAD	<b>North Reference:</b>	True
<b>Well:</b>	BOST FARM 5C-11-L	<b>Survey Calculation Method:</b>	Minimum Curvature
<b>Wellbore:</b>	Wellbore #1		
<b>Design:</b>	Design #1		

Planned Survey										
Measured Depth (usft)	Inclination (°)	Azimuth (°)	Vertical Depth (usft)	+N/-S (usft)	+E/-W (usft)	Vertical Section (usft)	Dogleg Rate (°/100usft)	Build Rate (°/100usft)	Turn Rate (°/100usft)	
8,800.00	90.17	269.62	7,155.42	-657.42	-2,477.33	2,514.47	0.00	0.00	0.00	
8,900.00	90.17	269.62	7,155.12	-658.08	-2,577.33	2,614.30	0.00	0.00	0.00	
9,000.00	90.17	269.62	7,154.83	-658.74	-2,677.33	2,714.13	0.00	0.00	0.00	
9,100.00	90.17	269.62	7,154.53	-659.40	-2,777.33	2,813.96	0.00	0.00	0.00	
9,200.00	90.17	269.62	7,154.24	-660.06	-2,877.32	2,913.80	0.00	0.00	0.00	
9,300.00	90.17	269.62	7,153.94	-660.72	-2,977.32	3,013.63	0.00	0.00	0.00	
9,400.00	90.17	269.62	7,153.65	-661.38	-3,077.32	3,113.46	0.00	0.00	0.00	
9,500.00	90.17	269.62	7,153.35	-662.04	-3,177.32	3,213.30	0.00	0.00	0.00	
9,600.00	90.17	269.62	7,153.06	-662.71	-3,277.31	3,313.13	0.00	0.00	0.00	
9,700.00	90.17	269.62	7,152.76	-663.37	-3,377.31	3,412.96	0.00	0.00	0.00	
9,800.00	90.17	269.62	7,152.47	-664.03	-3,477.31	3,512.80	0.00	0.00	0.00	
9,900.00	90.17	269.62	7,152.17	-664.69	-3,577.31	3,612.63	0.00	0.00	0.00	
10,000.00	90.17	269.62	7,151.88	-665.35	-3,677.30	3,712.46	0.00	0.00	0.00	
10,100.00	90.17	269.62	7,151.58	-666.01	-3,777.30	3,812.30	0.00	0.00	0.00	
10,200.00	90.17	269.62	7,151.29	-666.67	-3,877.30	3,912.13	0.00	0.00	0.00	
10,300.00	90.17	269.62	7,150.99	-667.33	-3,977.29	4,011.96	0.00	0.00	0.00	
10,400.00	90.17	269.62	7,150.70	-667.99	-4,077.29	4,111.80	0.00	0.00	0.00	
10,500.00	90.17	269.62	7,150.40	-668.66	-4,177.29	4,211.63	0.00	0.00	0.00	
10,600.00	90.17	269.62	7,150.11	-669.32	-4,277.29	4,311.46	0.00	0.00	0.00	
10,700.00	90.17	269.62	7,149.81	-669.98	-4,377.28	4,411.29	0.00	0.00	0.00	
10,800.00	90.17	269.62	7,149.52	-670.64	-4,477.28	4,511.13	0.00	0.00	0.00	
10,900.00	90.17	269.62	7,149.22	-671.30	-4,577.28	4,610.96	0.00	0.00	0.00	
11,000.00	90.17	269.62	7,148.93	-671.96	-4,677.28	4,710.79	0.00	0.00	0.00	
11,100.00	90.17	269.62	7,148.63	-672.62	-4,777.27	4,810.63	0.00	0.00	0.00	
11,200.00	90.17	269.62	7,148.34	-673.28	-4,877.27	4,910.46	0.00	0.00	0.00	
11,300.00	90.17	269.62	7,148.04	-673.94	-4,977.27	5,010.29	0.00	0.00	0.00	
11,400.00	90.17	269.62	7,147.75	-674.61	-5,077.27	5,110.13	0.00	0.00	0.00	
11,500.00	90.17	269.62	7,147.45	-675.27	-5,177.26	5,209.96	0.00	0.00	0.00	
11,600.00	90.17	269.62	7,147.16	-675.93	-5,277.26	5,309.79	0.00	0.00	0.00	
11,700.00	90.17	269.62	7,146.86	-676.59	-5,377.26	5,409.63	0.00	0.00	0.00	
11,800.00	90.17	269.62	7,146.57	-677.25	-5,477.26	5,509.46	0.00	0.00	0.00	
11,900.00	90.17	269.62	7,146.27	-677.91	-5,577.25	5,609.29	0.00	0.00	0.00	
12,000.00	90.17	269.62	7,145.98	-678.57	-5,677.25	5,709.13	0.00	0.00	0.00	
12,100.00	90.17	269.62	7,145.68	-679.23	-5,777.25	5,808.96	0.00	0.00	0.00	
12,200.00	90.17	269.62	7,145.39	-679.89	-5,877.24	5,908.79	0.00	0.00	0.00	
12,300.00	90.17	269.62	7,145.09	-680.56	-5,977.24	6,008.62	0.00	0.00	0.00	
12,400.00	90.17	269.62	7,144.80	-681.22	-6,077.24	6,108.46	0.00	0.00	0.00	
12,500.00	90.17	269.62	7,144.50	-681.88	-6,177.24	6,208.29	0.00	0.00	0.00	
12,600.00	90.17	269.62	7,144.21	-682.54	-6,277.23	6,308.12	0.00	0.00	0.00	
12,700.00	90.17	269.62	7,143.91	-683.20	-6,377.23	6,407.96	0.00	0.00	0.00	
12,800.00	90.17	269.62	7,143.62	-683.86	-6,477.23	6,507.79	0.00	0.00	0.00	
12,900.00	90.17	269.62	7,143.32	-684.52	-6,577.23	6,607.62	0.00	0.00	0.00	
13,000.00	90.17	269.62	7,143.03	-685.18	-6,677.22	6,707.46	0.00	0.00	0.00	
13,100.00	90.17	269.62	7,142.73	-685.84	-6,777.22	6,807.29	0.00	0.00	0.00	
13,200.00	90.17	269.62	7,142.44	-686.51	-6,877.22	6,907.12	0.00	0.00	0.00	
13,300.00	90.17	269.62	7,142.14	-687.17	-6,977.22	7,006.96	0.00	0.00	0.00	
13,400.00	90.17	269.62	7,141.85	-687.83	-7,077.21	7,106.79	0.00	0.00	0.00	
13,500.00	90.17	269.62	7,141.55	-688.49	-7,177.21	7,206.62	0.00	0.00	0.00	
13,600.00	90.17	269.62	7,141.26	-689.15	-7,277.21	7,306.45	0.00	0.00	0.00	
13,700.00	90.17	269.62	7,140.96	-689.81	-7,377.21	7,406.29	0.00	0.00	0.00	
13,800.00	90.17	269.62	7,140.67	-690.47	-7,477.20	7,506.12	0.00	0.00	0.00	
13,900.00	90.17	269.62	7,140.37	-691.13	-7,577.20	7,605.95	0.00	0.00	0.00	
14,000.00	90.17	269.62	7,140.08	-691.79	-7,677.20	7,705.79	0.00	0.00	0.00	
14,100.00	90.17	269.62	7,139.78	-692.46	-7,777.20	7,805.62	0.00	0.00	0.00	

# Hewlett-Packard

## Planning Report

<b>Database:</b>	EDM 5000.14 Single User Db	<b>Local Co-ordinate Reference:</b>	Well BOST FARM 5C-11-L
<b>Company:</b>	SRC ENERGY	<b>TVD Reference:</b>	RKB = 20' @ 4898.00usft (PD 462)
<b>Project:</b>	WELD COUNTY (NAD83, TRUE NORTH)	<b>MD Reference:</b>	RKB = 20' @ 4898.00usft (PD 462)
<b>Site:</b>	5N-66W-07 BOST FARM 5-7 PAD	<b>North Reference:</b>	True
<b>Well:</b>	BOST FARM 5C-11-L	<b>Survey Calculation Method:</b>	Minimum Curvature
<b>Wellbore:</b>	Wellbore #1		
<b>Design:</b>	Design #1		

Planned Survey										
Measured Depth (usft)	Inclination (°)	Azimuth (°)	Vertical Depth (usft)	+N/-S (usft)	+E/-W (usft)	Vertical Section (usft)	Dogleg Rate (°/100usft)	Build Rate (°/100usft)	Turn Rate (°/100usft)	
14,200.00	90.17	269.62	7,139.49	-693.12	-7,877.19	7,905.45	0.00	0.00	0.00	
14,300.00	90.17	269.62	7,139.19	-693.78	-7,977.19	8,005.29	0.00	0.00	0.00	
14,400.00	90.17	269.62	7,138.90	-694.44	-8,077.19	8,105.12	0.00	0.00	0.00	
14,500.00	90.17	269.62	7,138.60	-695.10	-8,177.18	8,204.95	0.00	0.00	0.00	
14,600.00	90.17	269.62	7,138.31	-695.76	-8,277.18	8,304.79	0.00	0.00	0.00	
14,700.00	90.17	269.62	7,138.01	-696.42	-8,377.18	8,404.62	0.00	0.00	0.00	
14,800.00	90.17	269.62	7,137.71	-697.08	-8,477.18	8,504.45	0.00	0.00	0.00	
14,900.00	90.17	269.62	7,137.42	-697.74	-8,577.17	8,604.29	0.00	0.00	0.00	
15,000.00	90.17	269.62	7,137.12	-698.41	-8,677.17	8,704.12	0.00	0.00	0.00	
15,100.00	90.17	269.62	7,136.83	-699.07	-8,777.17	8,803.95	0.00	0.00	0.00	
15,200.00	90.17	269.62	7,136.53	-699.73	-8,877.17	8,903.78	0.00	0.00	0.00	
15,300.00	90.17	269.62	7,136.24	-700.39	-8,977.16	9,003.62	0.00	0.00	0.00	
15,400.00	90.17	269.62	7,135.94	-701.05	-9,077.16	9,103.45	0.00	0.00	0.00	
15,500.00	90.17	269.62	7,135.65	-701.71	-9,177.16	9,203.28	0.00	0.00	0.00	
15,600.00	90.17	269.62	7,135.35	-702.37	-9,277.16	9,303.12	0.00	0.00	0.00	
15,700.00	90.17	269.62	7,135.06	-703.03	-9,377.15	9,402.95	0.00	0.00	0.00	
15,800.00	90.17	269.62	7,134.76	-703.69	-9,477.15	9,502.78	0.00	0.00	0.00	
15,900.00	90.17	269.62	7,134.47	-704.36	-9,577.15	9,602.62	0.00	0.00	0.00	
16,000.00	90.17	269.62	7,134.17	-705.02	-9,677.15	9,702.45	0.00	0.00	0.00	
16,100.00	90.17	269.62	7,133.88	-705.68	-9,777.14	9,802.28	0.00	0.00	0.00	
16,200.00	90.17	269.62	7,133.58	-706.34	-9,877.14	9,902.12	0.00	0.00	0.00	
16,300.00	90.17	269.62	7,133.29	-707.00	-9,977.14	10,001.95	0.00	0.00	0.00	
16,400.00	90.17	269.62	7,132.99	-707.66	-10,077.13	10,101.78	0.00	0.00	0.00	
16,500.00	90.17	269.62	7,132.70	-708.32	-10,177.13	10,201.62	0.00	0.00	0.00	
16,600.00	90.17	269.62	7,132.40	-708.98	-10,277.13	10,301.45	0.00	0.00	0.00	
16,700.00	90.17	269.62	7,132.11	-709.64	-10,377.13	10,401.28	0.00	0.00	0.00	
16,800.00	90.17	269.62	7,131.81	-710.31	-10,477.12	10,501.11	0.00	0.00	0.00	
16,900.00	90.17	269.62	7,131.52	-710.97	-10,577.12	10,600.95	0.00	0.00	0.00	
17,000.00	90.17	269.62	7,131.22	-711.63	-10,677.12	10,700.78	0.00	0.00	0.00	
17,100.00	90.17	269.62	7,130.93	-712.29	-10,777.12	10,800.61	0.00	0.00	0.00	
17,200.00	90.17	269.62	7,130.63	-712.95	-10,877.11	10,900.45	0.00	0.00	0.00	
17,300.00	90.17	269.62	7,130.34	-713.61	-10,977.11	11,000.28	0.00	0.00	0.00	
17,400.00	90.17	269.62	7,130.04	-714.27	-11,077.11	11,100.11	0.00	0.00	0.00	
17,414.80	90.17	269.62	7,130.00	-714.37	-11,091.90	11,114.88	0.00	0.00	0.00	
TD Well @ 17414.80ft										

Casing Points					
Measured Depth (usft)	Vertical Depth (usft)	Name	Casing Diameter (")	Hole Diameter (")	
1,762.12	1,750.00	9 5/8"	9-5/8	13-1/2	
7,586.43	7,159.00	5 1/2"	5-1/2	8-1/2	

# Hewlett-Packard

## Planning Report

<b>Database:</b>	EDM 5000.14 Single User Db	<b>Local Co-ordinate Reference:</b>	Well BOST FARM 5C-11-L
<b>Company:</b>	SRC ENERGY	<b>TVD Reference:</b>	RKB = 20' @ 4898.00usft (PD 462)
<b>Project:</b>	WELD COUNTY (NAD83, TRUE NORTH)	<b>MD Reference:</b>	RKB = 20' @ 4898.00usft (PD 462)
<b>Site:</b>	5N-66W-07 BOST FARM 5-7 PAD	<b>North Reference:</b>	True
<b>Well:</b>	BOST FARM 5C-11-L	<b>Survey Calculation Method:</b>	Minimum Curvature
<b>Wellbore:</b>	Wellbore #1		
<b>Design:</b>	Design #1		

Plan Annotations					
Measured Depth (usft)	Vertical Depth (usft)	Local Coordinates		Comment	
		+N/-S (usft)	+E/-W (usft)		
250.00	250.00	0.00	0.00	Begin Nudge @ 250.00ft	
650.00	648.70	-19.09	-20.32	End Nudge @ 650.00ft	
6,649.66	6,589.97	-590.68	-629.01	KOP @ 6649.66ft :: DLS = 9°/100'	
7,586.43	7,159.00	-649.39	-1,263.80	End Build @ 7586.43ft	
17,414.80	7,130.00	-714.37	-11,091.90	TD Well @ 17414.80ft	