

# **SRC ENERGY**

**WELD COUNTY (NAD83, TRUE NORTH)**

**5N-66W-07 BOST FARM 5-7 PAD**

**BOST FARM 5N-11A-L**

**Wellbore #1**

**Plan: Design #1**

## **Standard Planning Report**

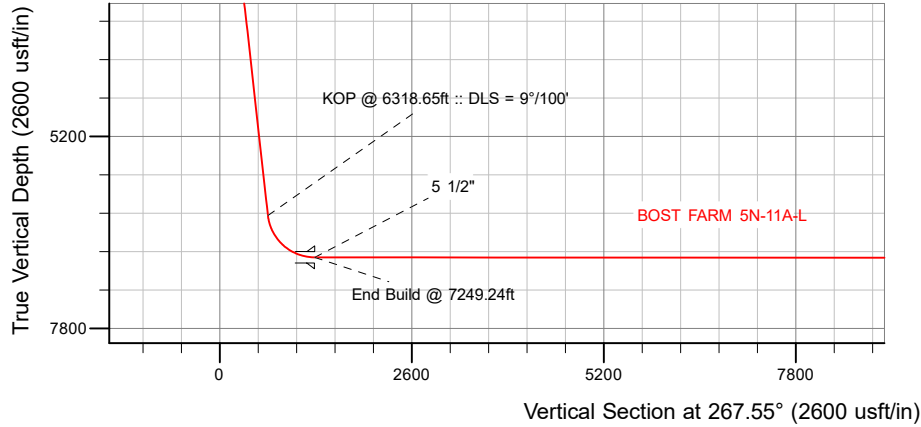
**28 December, 2017**

Project: WELD COUNTY (NAD83, TRUE NORTH)  
 Site: 5N-66W-07 BOST FARM 5-7 PAD  
 Well: BOST FARM 5N-11A-L  
 Wellbore: Wellbore #1  
 Design: Design #1

# SRC ENERGY

## CASING DETAILS

TVD	MD	Name	Size
1750.00	1760.27	9 5/8"	9-5/8
6838.00	7249.24	5 1/2"	5-1/2

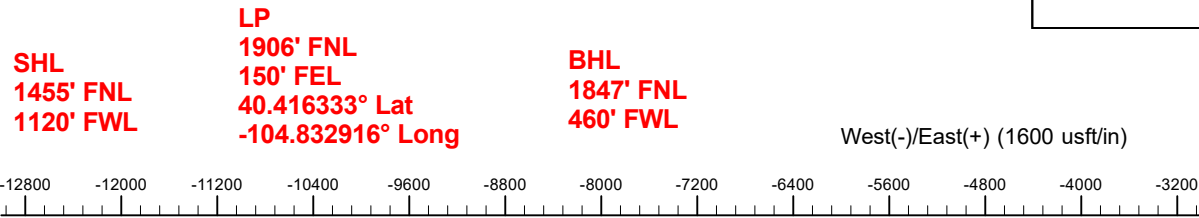


## SECTION DETAILS

Sec	MD	Inc	Azi	TVD	+N-S	+E-W	Dleg	TFace	V Sect	Target
1	0.00	0.00	0.00	0.00	0.00	0.00	0.00	0.00	0.00	
2	250.00	0.00	0.00	250.00	0.00	0.00	0.00	0.00	0.00	
3	615.00	7.30	238.00	614.01	-12.31	-19.69	2.00	238.00	20.20	
4	6318.65	7.30	238.00	6271.43	-396.35	-634.30	0.00	0.00	650.66	
5	7249.24	89.95	269.78	6838.00	-436.96	-1266.53	9.00	31.99	1284.04	
6	17074.59	89.95	269.78	6846.00	-474.36	-11091.80	0.00	0.0011101.94		BOST FARM 5N-11A-L_BHL

## WELLBORE TARGET DETAILS (LAT/LONG)

Name	TVD	+N-S	+E-W	Latitude	Longitude
BOST FARM 5N-11A-L_SHL	0.00	0.01	0.00	40.417533	-104.828367
BOST FARM 5N-11A-L_BHL	6846.00	-474.36	-11091.80	40.416224	-104.868202



**T M** Azimuths to True North  
 Magnetic North: 8.19°  
 Magnetic Field Strength: 52336.7snT  
 Dip Angle: 66.85°  
 Date: 12/18/2017  
 Model: IGRF2015

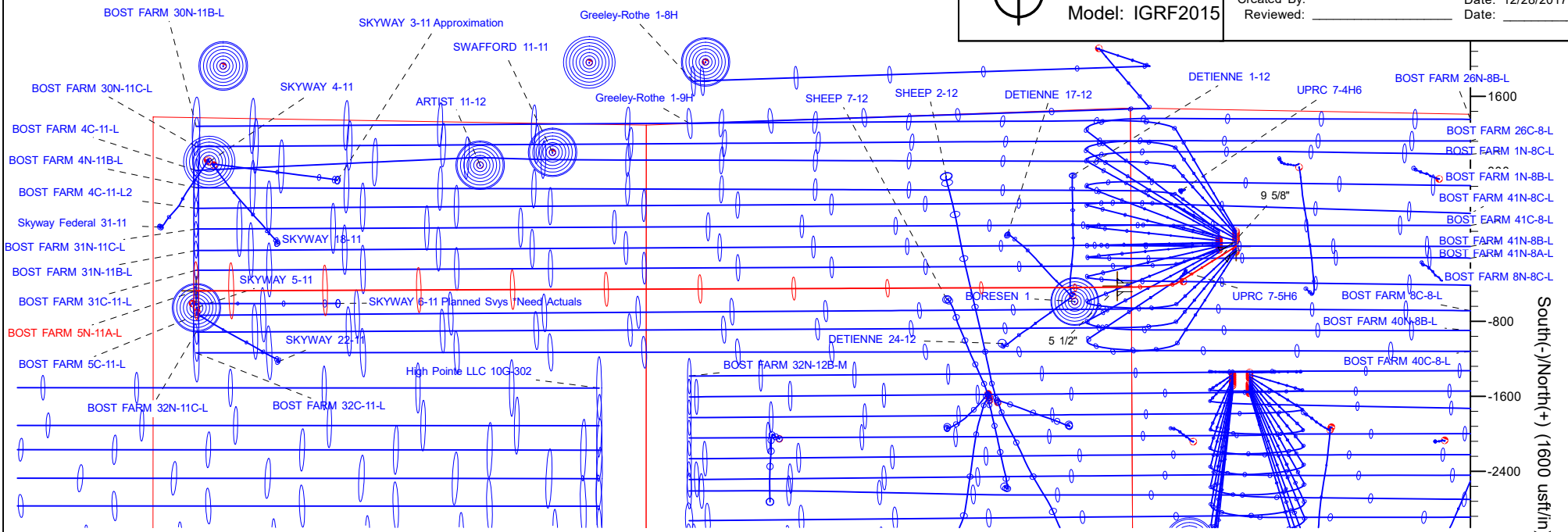
## WELL DETAILS: BOST FARM 5N-11A-L

GL = 487'

RKB = 20' @ 4898.00usft (PD 462)

Plan: Design #1 (BOST FARM 5N-11A-L/Wellbore #1)

Created By: \_\_\_\_\_ Date: 12/28/2017  
 Reviewed: \_\_\_\_\_ Date: \_\_\_\_\_



South(-)/North(+) (1600 usft/in)

# Hewlett-Packard

## Planning Report

<b>Database:</b>	EDM 5000.14 Single User Db	<b>Local Co-ordinate Reference:</b>	Well BOST FARM 5N-11A-L
<b>Company:</b>	SRC ENERGY	<b>TVD Reference:</b>	RKB = 20' @ 4898.00usft (PD 462)
<b>Project:</b>	WELD COUNTY (NAD83, TRUE NORTH)	<b>MD Reference:</b>	RKB = 20' @ 4898.00usft (PD 462)
<b>Site:</b>	5N-66W-07 BOST FARM 5-7 PAD	<b>North Reference:</b>	True
<b>Well:</b>	BOST FARM 5N-11A-L	<b>Survey Calculation Method:</b>	Minimum Curvature
<b>Wellbore:</b>	Wellbore #1		
<b>Design:</b>	Design #1		

<b>Project</b>	WELD COUNTY (NAD83, TRUE NORTH)		
<b>Map System:</b>	US State Plane 1983	<b>System Datum:</b>	Mean Sea Level
<b>Geo Datum:</b>	North American Datum 1983		
<b>Map Zone:</b>	Colorado Northern Zone		

<b>Site</b>	5N-66W-07 BOST FARM 5-7 PAD				
<b>Site Position:</b>		<b>Northing:</b>	1,395,815.76 usft	<b>Latitude:</b>	40.417972
<b>From:</b>	Lat/Long	<b>Easting:</b>	3,187,006.76 usft	<b>Longitude:</b>	-104.828362
<b>Position Uncertainty:</b>	0.00 usft	<b>Slot Radius:</b>	13-3/16 "	<b>Grid Convergence:</b>	0.43 °

<b>Well</b>	BOST FARM 5N-11A-L					
<b>Well Position</b>	<b>+N/-S</b>	-159.94 usft	<b>Northing:</b>	1,395,655.81 usft	<b>Latitude:</b>	40.417533
	<b>+E/-W</b>	-1.39 usft	<b>Easting:</b>	3,187,006.58 usft	<b>Longitude:</b>	-104.828367
<b>Position Uncertainty</b>		3.28 usft	<b>Wellhead Elevation:</b>		<b>Ground Level:</b>	4,878.00 usft

<b>Wellbore</b>	Wellbore #1				
<b>Magnetics</b>	<b>Model Name</b>	<b>Sample Date</b>	<b>Declination (°)</b>	<b>Dip Angle (°)</b>	<b>Field Strength (nT)</b>
	IGRF2015	12/18/2017	8.19	66.85	52,336.73483943

<b>Design</b>	Design #1			
<b>Audit Notes:</b>				
<b>Version:</b>	<b>Phase:</b>	PLAN	<b>Tie On Depth:</b>	0.00
<b>Vertical Section:</b>	<b>Depth From (TVD) (usft)</b>	<b>+N/-S (usft)</b>	<b>+E/-W (usft)</b>	<b>Direction (°)</b>
	0.00	0.00	0.00	267.55

<b>Plan Survey Tool Program</b>	<b>Date</b>	12/27/2017			
<b>Depth From (usft)</b>	<b>Depth To (usft)</b>	<b>Survey (Wellbore)</b>	<b>Tool Name</b>	<b>Remarks</b>	
1	0.00	1,750.00	Design #1 (Wellbore #1)	SRC Energy_ISCWSA REV 2 Fixed:v2:crustal field declinatio	
2	1,750.00	17,074.59	Design #1 (Wellbore #1)	SRC Energy_ISCWSA REV 2 Fixed:v2:crustal field declinatio	

<b>Plan Sections</b>										
<b>Measured Depth (usft)</b>	<b>Inclination (°)</b>	<b>Azimuth (°)</b>	<b>Vertical Depth (usft)</b>	<b>+N/-S (usft)</b>	<b>+E/-W (usft)</b>	<b>Dogleg Rate (°/100usft)</b>	<b>Build Rate (°/100usft)</b>	<b>Turn Rate (°/100usft)</b>	<b>TFO (°)</b>	<b>Target</b>
0.00	0.00	0.00	0.00	0.00	0.00	0.00	0.00	0.00	0.00	
250.00	0.00	0.00	250.00	0.00	0.00	0.00	0.00	0.00	0.00	
615.00	7.30	238.00	614.01	-12.31	-19.69	2.00	2.00	0.00	238.00	
6,318.65	7.30	238.00	6,271.43	-396.35	-634.30	0.00	0.00	0.00	0.00	
7,249.24	89.95	269.78	6,838.00	-436.96	-1,266.53	9.00	8.88	3.42	31.99	
17,074.59	89.95	269.78	6,846.00	-474.36	-11,091.80	0.00	0.00	0.00	0.00	BOST FARM 5N-11A-

# Hewlett-Packard

## Planning Report

<b>Database:</b>	EDM 5000.14 Single User Db	<b>Local Co-ordinate Reference:</b>	Well BOST FARM 5N-11A-L
<b>Company:</b>	SRC ENERGY	<b>TVD Reference:</b>	RKB = 20' @ 4898.00usft (PD 462)
<b>Project:</b>	WELD COUNTY (NAD83, TRUE NORTH)	<b>MD Reference:</b>	RKB = 20' @ 4898.00usft (PD 462)
<b>Site:</b>	5N-66W-07 BOST FARM 5-7 PAD	<b>North Reference:</b>	True
<b>Well:</b>	BOST FARM 5N-11A-L	<b>Survey Calculation Method:</b>	Minimum Curvature
<b>Wellbore:</b>	Wellbore #1		
<b>Design:</b>	Design #1		

Planned Survey										
Measured Depth (usft)	Inclination (°)	Azimuth (°)	Vertical Depth (usft)	+N/-S (usft)	+E/-W (usft)	Vertical Section (usft)	Dogleg Rate (°/100usft)	Build Rate (°/100usft)	Turn Rate (°/100usft)	
0.00	0.00	0.00	0.00	0.00	0.00	0.00	0.00	0.00	0.00	0.00
100.00	0.00	0.00	100.00	0.00	0.00	0.00	0.00	0.00	0.00	0.00
200.00	0.00	0.00	200.00	0.00	0.00	0.00	0.00	0.00	0.00	0.00
250.00	0.00	0.00	250.00	0.00	0.00	0.00	0.00	0.00	0.00	0.00
<b>Begin Nudge @ 250.00ft</b>										
300.00	1.00	238.00	300.00	-0.23	-0.37	0.38	2.00	2.00	0.00	0.00
400.00	3.00	238.00	399.93	-2.08	-3.33	3.42	2.00	2.00	0.00	0.00
500.00	5.00	238.00	499.68	-5.78	-9.24	9.48	2.00	2.00	0.00	0.00
600.00	7.00	238.00	599.13	-11.32	-18.11	18.58	2.00	2.00	0.00	0.00
615.00	7.30	238.00	614.01	-12.31	-19.69	20.20	2.00	2.00	0.00	0.00
<b>End Nudge @ 615.00ft</b>										
700.00	7.30	238.00	698.32	-18.03	-28.85	29.60	0.00	0.00	0.00	0.00
800.00	7.30	238.00	797.51	-24.76	-39.63	40.65	0.00	0.00	0.00	0.00
900.00	7.30	238.00	896.70	-31.50	-50.40	51.70	0.00	0.00	0.00	0.00
1,000.00	7.30	238.00	995.89	-38.23	-61.18	62.76	0.00	0.00	0.00	0.00
1,100.00	7.30	238.00	1,095.08	-44.96	-71.95	73.81	0.00	0.00	0.00	0.00
1,200.00	7.30	238.00	1,194.27	-51.70	-82.73	84.86	0.00	0.00	0.00	0.00
1,300.00	7.30	238.00	1,293.46	-58.43	-93.51	95.92	0.00	0.00	0.00	0.00
1,400.00	7.30	238.00	1,392.65	-65.16	-104.28	106.97	0.00	0.00	0.00	0.00
1,500.00	7.30	238.00	1,491.84	-71.90	-115.06	118.02	0.00	0.00	0.00	0.00
1,600.00	7.30	238.00	1,591.03	-78.63	-125.83	129.08	0.00	0.00	0.00	0.00
1,700.00	7.30	238.00	1,690.22	-85.36	-136.61	140.13	0.00	0.00	0.00	0.00
1,760.27	7.30	238.00	1,750.00	-89.42	-143.10	146.79	0.00	0.00	0.00	0.00
<b>9 5/8"</b>										
1,800.00	7.30	238.00	1,789.41	-92.10	-147.38	151.18	0.00	0.00	0.00	0.00
1,900.00	7.30	238.00	1,888.60	-98.83	-158.16	162.24	0.00	0.00	0.00	0.00
2,000.00	7.30	238.00	1,987.79	-105.56	-168.94	173.29	0.00	0.00	0.00	0.00
2,100.00	7.30	238.00	2,086.98	-112.30	-179.71	184.35	0.00	0.00	0.00	0.00
2,200.00	7.30	238.00	2,186.17	-119.03	-190.49	195.40	0.00	0.00	0.00	0.00
2,300.00	7.30	238.00	2,285.36	-125.76	-201.26	206.45	0.00	0.00	0.00	0.00
2,400.00	7.30	238.00	2,384.54	-132.50	-212.04	217.51	0.00	0.00	0.00	0.00
2,500.00	7.30	238.00	2,483.73	-139.23	-222.81	228.56	0.00	0.00	0.00	0.00
2,600.00	7.30	238.00	2,582.92	-145.96	-233.59	239.61	0.00	0.00	0.00	0.00
2,700.00	7.30	238.00	2,682.11	-152.70	-244.37	250.67	0.00	0.00	0.00	0.00
2,800.00	7.30	238.00	2,781.30	-159.43	-255.14	261.72	0.00	0.00	0.00	0.00
2,900.00	7.30	238.00	2,880.49	-166.16	-265.92	272.77	0.00	0.00	0.00	0.00
3,000.00	7.30	238.00	2,979.68	-172.90	-276.69	283.83	0.00	0.00	0.00	0.00
3,100.00	7.30	238.00	3,078.87	-179.63	-287.47	294.88	0.00	0.00	0.00	0.00
3,200.00	7.30	238.00	3,178.06	-186.36	-298.24	305.93	0.00	0.00	0.00	0.00
3,300.00	7.30	238.00	3,277.25	-193.10	-309.02	316.99	0.00	0.00	0.00	0.00
3,400.00	7.30	238.00	3,376.44	-199.83	-319.80	328.04	0.00	0.00	0.00	0.00
3,500.00	7.30	238.00	3,475.63	-206.56	-330.57	339.10	0.00	0.00	0.00	0.00
3,600.00	7.30	238.00	3,574.82	-213.30	-341.35	350.15	0.00	0.00	0.00	0.00
3,700.00	7.30	238.00	3,674.01	-220.03	-352.12	361.20	0.00	0.00	0.00	0.00
3,800.00	7.30	238.00	3,773.20	-226.76	-362.90	372.26	0.00	0.00	0.00	0.00
3,900.00	7.30	238.00	3,872.39	-233.50	-373.67	383.31	0.00	0.00	0.00	0.00
4,000.00	7.30	238.00	3,971.58	-240.23	-384.45	394.36	0.00	0.00	0.00	0.00
4,100.00	7.30	238.00	4,070.77	-246.96	-395.23	405.42	0.00	0.00	0.00	0.00
4,200.00	7.30	238.00	4,169.95	-253.70	-406.00	416.47	0.00	0.00	0.00	0.00
4,300.00	7.30	238.00	4,269.14	-260.43	-416.78	427.52	0.00	0.00	0.00	0.00
4,400.00	7.30	238.00	4,368.33	-267.16	-427.55	438.58	0.00	0.00	0.00	0.00
4,500.00	7.30	238.00	4,467.52	-273.90	-438.33	449.63	0.00	0.00	0.00	0.00
4,600.00	7.30	238.00	4,566.71	-280.63	-449.10	460.68	0.00	0.00	0.00	0.00

# Hewlett-Packard

## Planning Report

<b>Database:</b>	EDM 5000.14 Single User Db	<b>Local Co-ordinate Reference:</b>	Well BOST FARM 5N-11A-L
<b>Company:</b>	SRC ENERGY	<b>TVD Reference:</b>	RKB = 20' @ 4898.00usft (PD 462)
<b>Project:</b>	WELD COUNTY (NAD83, TRUE NORTH)	<b>MD Reference:</b>	RKB = 20' @ 4898.00usft (PD 462)
<b>Site:</b>	5N-66W-07 BOST FARM 5-7 PAD	<b>North Reference:</b>	True
<b>Well:</b>	BOST FARM 5N-11A-L	<b>Survey Calculation Method:</b>	Minimum Curvature
<b>Wellbore:</b>	Wellbore #1		
<b>Design:</b>	Design #1		

Planned Survey										
Measured Depth (usft)	Inclination (°)	Azimuth (°)	Vertical Depth (usft)	+N/-S (usft)	+E/-W (usft)	Vertical Section (usft)	Dogleg Rate (°/100usft)	Build Rate (°/100usft)	Turn Rate (°/100usft)	
4,700.00	7.30	238.00	4,665.90	-287.36	-459.88	471.74	0.00	0.00	0.00	
4,800.00	7.30	238.00	4,765.09	-294.10	-470.65	482.79	0.00	0.00	0.00	
4,900.00	7.30	238.00	4,864.28	-300.83	-481.43	493.84	0.00	0.00	0.00	
5,000.00	7.30	238.00	4,963.47	-307.56	-492.21	504.90	0.00	0.00	0.00	
5,100.00	7.30	238.00	5,062.66	-314.30	-502.98	515.95	0.00	0.00	0.00	
5,200.00	7.30	238.00	5,161.85	-321.03	-513.76	527.01	0.00	0.00	0.00	
5,300.00	7.30	238.00	5,261.04	-327.76	-524.53	538.06	0.00	0.00	0.00	
5,400.00	7.30	238.00	5,360.23	-334.50	-535.31	549.11	0.00	0.00	0.00	
5,500.00	7.30	238.00	5,459.42	-341.23	-546.08	560.17	0.00	0.00	0.00	
5,600.00	7.30	238.00	5,558.61	-347.97	-556.86	571.22	0.00	0.00	0.00	
5,700.00	7.30	238.00	5,657.80	-354.70	-567.64	582.27	0.00	0.00	0.00	
5,800.00	7.30	238.00	5,756.99	-361.43	-578.41	593.33	0.00	0.00	0.00	
5,900.00	7.30	238.00	5,856.18	-368.17	-589.19	604.38	0.00	0.00	0.00	
6,000.00	7.30	238.00	5,955.36	-374.90	-599.96	615.43	0.00	0.00	0.00	
6,100.00	7.30	238.00	6,054.55	-381.63	-610.74	626.49	0.00	0.00	0.00	
6,200.00	7.30	238.00	6,153.74	-388.37	-621.51	637.54	0.00	0.00	0.00	
6,300.00	7.30	238.00	6,252.93	-395.10	-632.29	648.59	0.00	0.00	0.00	
6,318.65	7.30	238.00	6,271.43	-396.35	-634.30	650.66	0.00	0.00	0.00	
<b>KOP @ 6318.65ft :: DLS = 9°/100'</b>										
6,350.00	9.81	246.81	6,302.43	-398.46	-638.44	654.89	9.00	8.00	28.10	
6,400.00	14.05	254.15	6,351.34	-401.80	-648.20	664.78	9.00	8.49	14.68	
6,450.00	18.42	258.09	6,399.34	-405.09	-661.78	678.48	9.00	8.73	7.90	
6,500.00	22.83	260.56	6,446.12	-408.31	-679.08	695.91	9.00	8.83	4.94	
6,550.00	27.28	262.27	6,491.41	-411.44	-700.02	716.96	9.00	8.88	3.40	
6,600.00	31.73	263.52	6,534.91	-414.47	-724.45	741.50	9.00	8.92	2.51	
6,650.00	36.20	264.50	6,576.37	-417.37	-752.23	769.37	9.00	8.93	1.95	
6,700.00	40.67	265.28	6,615.53	-420.13	-783.18	800.41	9.00	8.95	1.57	
6,750.00	45.15	265.94	6,652.14	-422.73	-817.11	834.43	9.00	8.96	1.31	
6,800.00	49.63	266.50	6,685.98	-425.15	-853.82	871.21	9.00	8.96	1.12	
6,850.00	54.12	266.99	6,716.84	-427.38	-893.08	910.53	9.00	8.97	0.98	
6,900.00	58.60	267.42	6,744.53	-429.40	-934.65	952.14	9.00	8.97	0.88	
6,950.00	63.09	267.82	6,768.88	-431.21	-978.27	995.80	9.00	8.97	0.80	
7,000.00	67.58	268.19	6,789.75	-432.79	-1,023.66	1,041.22	9.00	8.98	0.73	
7,050.00	72.06	268.53	6,806.99	-434.13	-1,070.56	1,088.13	9.00	8.98	0.69	
7,100.00	76.55	268.86	6,820.51	-435.22	-1,118.68	1,136.25	9.00	8.98	0.65	
7,150.00	81.04	269.18	6,830.22	-436.06	-1,167.70	1,185.27	9.00	8.98	0.63	
7,200.00	85.53	269.48	6,836.06	-436.64	-1,217.34	1,234.89	9.00	8.98	0.61	
7,249.24	89.95	269.78	6,838.00	-436.96	-1,266.53	1,284.05	9.00	8.98	0.61	
<b>End Build @ 7249.24ft - 5 1/2"</b>										
7,300.00	89.95	269.78	6,838.04	-437.15	-1,317.29	1,334.77	0.00	0.00	0.00	
7,400.00	89.95	269.78	6,838.13	-437.53	-1,417.29	1,434.69	0.00	0.00	0.00	
7,500.00	89.95	269.78	6,838.21	-437.91	-1,517.29	1,534.62	0.00	0.00	0.00	
7,600.00	89.95	269.78	6,838.29	-438.29	-1,617.29	1,634.54	0.00	0.00	0.00	
7,700.00	89.95	269.78	6,838.37	-438.67	-1,717.29	1,734.46	0.00	0.00	0.00	
7,800.00	89.95	269.78	6,838.45	-439.05	-1,817.29	1,834.39	0.00	0.00	0.00	
7,900.00	89.95	269.78	6,838.53	-439.43	-1,917.29	1,934.31	0.00	0.00	0.00	
8,000.00	89.95	269.78	6,838.61	-439.81	-2,017.29	2,034.24	0.00	0.00	0.00	
8,100.00	89.95	269.78	6,838.70	-440.20	-2,117.29	2,134.16	0.00	0.00	0.00	
8,200.00	89.95	269.78	6,838.78	-440.58	-2,217.29	2,234.09	0.00	0.00	0.00	
8,300.00	89.95	269.78	6,838.86	-440.96	-2,317.28	2,334.01	0.00	0.00	0.00	
8,400.00	89.95	269.78	6,838.94	-441.34	-2,417.28	2,433.93	0.00	0.00	0.00	
8,500.00	89.95	269.78	6,839.02	-441.72	-2,517.28	2,533.86	0.00	0.00	0.00	
8,600.00	89.95	269.78	6,839.10	-442.10	-2,617.28	2,633.78	0.00	0.00	0.00	
8,700.00	89.95	269.78	6,839.18	-442.48	-2,717.28	2,733.71	0.00	0.00	0.00	

# Hewlett-Packard

## Planning Report

<b>Database:</b>	EDM 5000.14 Single User Db	<b>Local Co-ordinate Reference:</b>	Well BOST FARM 5N-11A-L
<b>Company:</b>	SRC ENERGY	<b>TVD Reference:</b>	RKB = 20' @ 4898.00usft (PD 462)
<b>Project:</b>	WELD COUNTY (NAD83, TRUE NORTH)	<b>MD Reference:</b>	RKB = 20' @ 4898.00usft (PD 462)
<b>Site:</b>	5N-66W-07 BOST FARM 5-7 PAD	<b>North Reference:</b>	True
<b>Well:</b>	BOST FARM 5N-11A-L	<b>Survey Calculation Method:</b>	Minimum Curvature
<b>Wellbore:</b>	Wellbore #1		
<b>Design:</b>	Design #1		

Planned Survey									
Measured Depth (usft)	Inclination (°)	Azimuth (°)	Vertical Depth (usft)	+N/-S (usft)	+E/-W (usft)	Vertical Section (usft)	Dogleg Rate (°/100usft)	Build Rate (°/100usft)	Turn Rate (°/100usft)
8,800.00	89.95	269.78	6,839.27	-442.86	-2,817.28	2,833.63	0.00	0.00	0.00
8,900.00	89.95	269.78	6,839.35	-443.24	-2,917.28	2,933.55	0.00	0.00	0.00
9,000.00	89.95	269.78	6,839.43	-443.62	-3,017.28	3,033.48	0.00	0.00	0.00
9,100.00	89.95	269.78	6,839.51	-444.00	-3,117.28	3,133.40	0.00	0.00	0.00
9,200.00	89.95	269.78	6,839.59	-444.38	-3,217.28	3,233.33	0.00	0.00	0.00
9,300.00	89.95	269.78	6,839.67	-444.76	-3,317.28	3,333.25	0.00	0.00	0.00
9,400.00	89.95	269.78	6,839.75	-445.14	-3,417.28	3,433.18	0.00	0.00	0.00
9,500.00	89.95	269.78	6,839.83	-445.52	-3,517.28	3,533.10	0.00	0.00	0.00
9,600.00	89.95	269.78	6,839.92	-445.91	-3,617.27	3,633.02	0.00	0.00	0.00
9,700.00	89.95	269.78	6,840.00	-446.29	-3,717.27	3,732.95	0.00	0.00	0.00
9,800.00	89.95	269.78	6,840.08	-446.67	-3,817.27	3,832.87	0.00	0.00	0.00
9,900.00	89.95	269.78	6,840.16	-447.05	-3,917.27	3,932.80	0.00	0.00	0.00
10,000.00	89.95	269.78	6,840.24	-447.43	-4,017.27	4,032.72	0.00	0.00	0.00
10,100.00	89.95	269.78	6,840.32	-447.81	-4,117.27	4,132.64	0.00	0.00	0.00
10,200.00	89.95	269.78	6,840.40	-448.19	-4,217.27	4,232.57	0.00	0.00	0.00
10,300.00	89.95	269.78	6,840.49	-448.57	-4,317.27	4,332.49	0.00	0.00	0.00
10,400.00	89.95	269.78	6,840.57	-448.95	-4,417.27	4,432.42	0.00	0.00	0.00
10,500.00	89.95	269.78	6,840.65	-449.33	-4,517.27	4,532.34	0.00	0.00	0.00
10,600.00	89.95	269.78	6,840.73	-449.71	-4,617.27	4,632.27	0.00	0.00	0.00
10,700.00	89.95	269.78	6,840.81	-450.09	-4,717.27	4,732.19	0.00	0.00	0.00
10,800.00	89.95	269.78	6,840.89	-450.47	-4,817.27	4,832.11	0.00	0.00	0.00
10,900.00	89.95	269.78	6,840.97	-450.85	-4,917.26	4,932.04	0.00	0.00	0.00
11,000.00	89.95	269.78	6,841.06	-451.23	-5,017.26	5,031.96	0.00	0.00	0.00
11,100.00	89.95	269.78	6,841.14	-451.62	-5,117.26	5,131.89	0.00	0.00	0.00
11,200.00	89.95	269.78	6,841.22	-452.00	-5,217.26	5,231.81	0.00	0.00	0.00
11,300.00	89.95	269.78	6,841.30	-452.38	-5,317.26	5,331.73	0.00	0.00	0.00
11,400.00	89.95	269.78	6,841.38	-452.76	-5,417.26	5,431.66	0.00	0.00	0.00
11,500.00	89.95	269.78	6,841.46	-453.14	-5,517.26	5,531.58	0.00	0.00	0.00
11,600.00	89.95	269.78	6,841.54	-453.52	-5,617.26	5,631.51	0.00	0.00	0.00
11,700.00	89.95	269.78	6,841.63	-453.90	-5,717.26	5,731.43	0.00	0.00	0.00
11,800.00	89.95	269.78	6,841.71	-454.28	-5,817.26	5,831.36	0.00	0.00	0.00
11,900.00	89.95	269.78	6,841.79	-454.66	-5,917.26	5,931.28	0.00	0.00	0.00
12,000.00	89.95	269.78	6,841.87	-455.04	-6,017.26	6,031.20	0.00	0.00	0.00
12,100.00	89.95	269.78	6,841.95	-455.42	-6,117.26	6,131.13	0.00	0.00	0.00
12,200.00	89.95	269.78	6,842.03	-455.80	-6,217.26	6,231.05	0.00	0.00	0.00
12,300.00	89.95	269.78	6,842.11	-456.18	-6,317.25	6,330.98	0.00	0.00	0.00
12,400.00	89.95	269.78	6,842.20	-456.56	-6,417.25	6,430.90	0.00	0.00	0.00
12,500.00	89.95	269.78	6,842.28	-456.94	-6,517.25	6,530.83	0.00	0.00	0.00
12,600.00	89.95	269.78	6,842.36	-457.33	-6,617.25	6,630.75	0.00	0.00	0.00
12,700.00	89.95	269.78	6,842.44	-457.71	-6,717.25	6,730.67	0.00	0.00	0.00
12,800.00	89.95	269.78	6,842.52	-458.09	-6,817.25	6,830.60	0.00	0.00	0.00
12,900.00	89.95	269.78	6,842.60	-458.47	-6,917.25	6,930.52	0.00	0.00	0.00
13,000.00	89.95	269.78	6,842.68	-458.85	-7,017.25	7,030.45	0.00	0.00	0.00
13,100.00	89.95	269.78	6,842.77	-459.23	-7,117.25	7,130.37	0.00	0.00	0.00
13,200.00	89.95	269.78	6,842.85	-459.61	-7,217.25	7,230.29	0.00	0.00	0.00
13,300.00	89.95	269.78	6,842.93	-459.99	-7,317.25	7,330.22	0.00	0.00	0.00
13,400.00	89.95	269.78	6,843.01	-460.37	-7,417.25	7,430.14	0.00	0.00	0.00
13,500.00	89.95	269.78	6,843.09	-460.75	-7,517.25	7,530.07	0.00	0.00	0.00
13,600.00	89.95	269.78	6,843.17	-461.13	-7,617.24	7,629.99	0.00	0.00	0.00
13,700.00	89.95	269.78	6,843.25	-461.51	-7,717.24	7,729.92	0.00	0.00	0.00
13,800.00	89.95	269.78	6,843.33	-461.89	-7,817.24	7,829.84	0.00	0.00	0.00
13,900.00	89.95	269.78	6,843.42	-462.27	-7,917.24	7,929.76	0.00	0.00	0.00
14,000.00	89.95	269.78	6,843.50	-462.65	-8,017.24	8,029.69	0.00	0.00	0.00
14,100.00	89.95	269.78	6,843.58	-463.04	-8,117.24	8,129.61	0.00	0.00	0.00

# Hewlett-Packard

## Planning Report

<b>Database:</b>	EDM 5000.14 Single User Db	<b>Local Co-ordinate Reference:</b>	Well BOST FARM 5N-11A-L
<b>Company:</b>	SRC ENERGY	<b>TVD Reference:</b>	RKB = 20' @ 4898.00usft (PD 462)
<b>Project:</b>	WELD COUNTY (NAD83, TRUE NORTH)	<b>MD Reference:</b>	RKB = 20' @ 4898.00usft (PD 462)
<b>Site:</b>	5N-66W-07 BOST FARM 5-7 PAD	<b>North Reference:</b>	True
<b>Well:</b>	BOST FARM 5N-11A-L	<b>Survey Calculation Method:</b>	Minimum Curvature
<b>Wellbore:</b>	Wellbore #1		
<b>Design:</b>	Design #1		

Planned Survey										
Measured Depth (usft)	Inclination (°)	Azimuth (°)	Vertical Depth (usft)	+N/-S (usft)	+E/-W (usft)	Vertical Section (usft)	Dogleg Rate (°/100usft)	Build Rate (°/100usft)	Turn Rate (°/100usft)	
14,200.00	89.95	269.78	6,843.66	-463.42	-8,217.24	8,229.54	0.00	0.00	0.00	
14,300.00	89.95	269.78	6,843.74	-463.80	-8,317.24	8,329.46	0.00	0.00	0.00	
14,400.00	89.95	269.78	6,843.82	-464.18	-8,417.24	8,429.38	0.00	0.00	0.00	
14,500.00	89.95	269.78	6,843.90	-464.56	-8,517.24	8,529.31	0.00	0.00	0.00	
14,600.00	89.95	269.78	6,843.99	-464.94	-8,617.24	8,629.23	0.00	0.00	0.00	
14,700.00	89.95	269.78	6,844.07	-465.32	-8,717.24	8,729.16	0.00	0.00	0.00	
14,800.00	89.95	269.78	6,844.15	-465.70	-8,817.24	8,829.08	0.00	0.00	0.00	
14,900.00	89.95	269.78	6,844.23	-466.08	-8,917.23	8,929.01	0.00	0.00	0.00	
15,000.00	89.95	269.78	6,844.31	-466.46	-9,017.23	9,028.93	0.00	0.00	0.00	
15,100.00	89.95	269.78	6,844.39	-466.84	-9,117.23	9,128.85	0.00	0.00	0.00	
15,200.00	89.95	269.78	6,844.47	-467.22	-9,217.23	9,228.78	0.00	0.00	0.00	
15,300.00	89.95	269.78	6,844.56	-467.60	-9,317.23	9,328.70	0.00	0.00	0.00	
15,400.00	89.95	269.78	6,844.64	-467.98	-9,417.23	9,428.63	0.00	0.00	0.00	
15,500.00	89.95	269.78	6,844.72	-468.36	-9,517.23	9,528.55	0.00	0.00	0.00	
15,600.00	89.95	269.78	6,844.80	-468.75	-9,617.23	9,628.47	0.00	0.00	0.00	
15,700.00	89.95	269.78	6,844.88	-469.13	-9,717.23	9,728.40	0.00	0.00	0.00	
15,800.00	89.95	269.78	6,844.96	-469.51	-9,817.23	9,828.32	0.00	0.00	0.00	
15,900.00	89.95	269.78	6,845.04	-469.89	-9,917.23	9,928.25	0.00	0.00	0.00	
16,000.00	89.95	269.78	6,845.13	-470.27	-10,017.23	10,028.17	0.00	0.00	0.00	
16,100.00	89.95	269.78	6,845.21	-470.65	-10,117.23	10,128.10	0.00	0.00	0.00	
16,200.00	89.95	269.78	6,845.29	-471.03	-10,217.22	10,228.02	0.00	0.00	0.00	
16,300.00	89.95	269.78	6,845.37	-471.41	-10,317.22	10,327.94	0.00	0.00	0.00	
16,400.00	89.95	269.78	6,845.45	-471.79	-10,417.22	10,427.87	0.00	0.00	0.00	
16,500.00	89.95	269.78	6,845.53	-472.17	-10,517.22	10,527.79	0.00	0.00	0.00	
16,600.00	89.95	269.78	6,845.61	-472.55	-10,617.22	10,627.72	0.00	0.00	0.00	
16,700.00	89.95	269.78	6,845.70	-472.93	-10,717.22	10,727.64	0.00	0.00	0.00	
16,800.00	89.95	269.78	6,845.78	-473.31	-10,817.22	10,827.57	0.00	0.00	0.00	
16,900.00	89.95	269.78	6,845.86	-473.69	-10,917.22	10,927.49	0.00	0.00	0.00	
17,000.00	89.95	269.78	6,845.94	-474.07	-11,017.22	11,027.41	0.00	0.00	0.00	
17,074.59	89.95	269.78	6,846.00	-474.36	-11,091.80	11,101.94	0.00	0.00	0.00	
<b>TD Well @ 17074.59ft</b>										

Casing Points					
Measured Depth (usft)	Vertical Depth (usft)	Name	Casing Diameter (")	Hole Diameter (")	
1,760.27	1,750.00	9 5/8"	9-5/8	13-1/2	
7,249.24	6,838.00	5 1/2"	5-1/2	8-1/2	

Plan Annotations					
Measured Depth (usft)	Vertical Depth (usft)	Local Coordinates		Comment	
		+N/-S (usft)	+E/-W (usft)		
250.00	250.00	0.00	0.00	Begin Nudge @ 250.00ft	
615.00	614.01	-12.31	-19.69	End Nudge @ 615.00ft	
6,318.65	6,271.43	-396.35	-634.30	KOP @ 6318.65ft :: DLS = 9°/100'	
7,249.24	6,838.00	-436.96	-1,266.53	End Build @ 7249.24ft	
17,074.59	6,846.00	-474.36	-11,091.80	TD Well @ 17074.59ft	