

# **SRC ENERGY**

**WELD COUNTY (NAD83, TRUE NORTH)**

**5N-66W-07 BOST FARM 5-7 PAD**

**BOST FARM 31N-11C-L**

**Wellbore #1**

**Plan: Design #1**

## **Standard Planning Report**

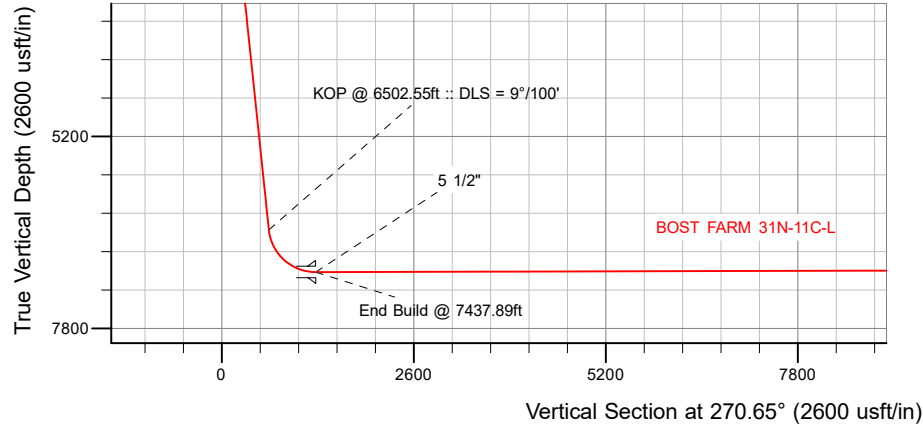
**28 December, 2017**

Project: WELD COUNTY (NAD83, TRUE NORTH)  
Site: 5N-66W-07 BOST FARM 5-7 PAD  
Well: BOST FARM 31N-11C-L  
Wellbore: Wellbore #1  
Design: Design #1

# SRC ENERGY

## CASING DETAILS

TVD	MD	Name	Size
1750.00	1757.50	9 5/8"	9-5/8
7038.00	7437.89	5 1/2"	5-1/2



## SECTION DETAILS

Sec	MD	Inc	Azi	TVD	+N/-S	+E/-W	Dleg	TFace	VSec	Target
1	0.00	0.00	0.00	0.00	0.00	0.00	0.00	0.00	0.00	
2	250.00	0.00	0.00	250.00	0.00	0.00	0.00	0.00	0.00	
3	557.50	6.15	283.80	556.91	3.93	-16.01	2.00	283.80	16.05	
4	6502.55	6.15	283.80	6467.75	155.86	-634.53	0.00	0.00	636.25	
5	7437.89	90.15	269.75	7038.00	168.07	-1269.38	9.00	-14.12	1271.20	
6	17260.97	90.15	269.75	7013.00	125.64	-11092.34	0.00	0.00	11093.05	BOST FARM 31N-11C-L_BHL

## WELLBORE TARGET DETAILS (LAT/LONG)

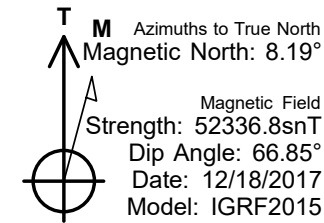
Name	TVD	+N/-S	+E/-W	Latitude	Longitude
BOST FARM 31N-11C-L_SHL	0.00	0.00	0.00	40.417698	-104.828365
BOST FARM 31N-11C-L_BHL	7013.00	125.64	-11092.34	40.418036	-104.868203

SHL  
1395' FNL  
1120' FWL

LP  
1235' FNL  
150' FEL  
40.418177° Lat  
-104.832930° Long

BHL  
1187' FNL  
460' FWL

West(-)/East(+) (1600 usft/in)



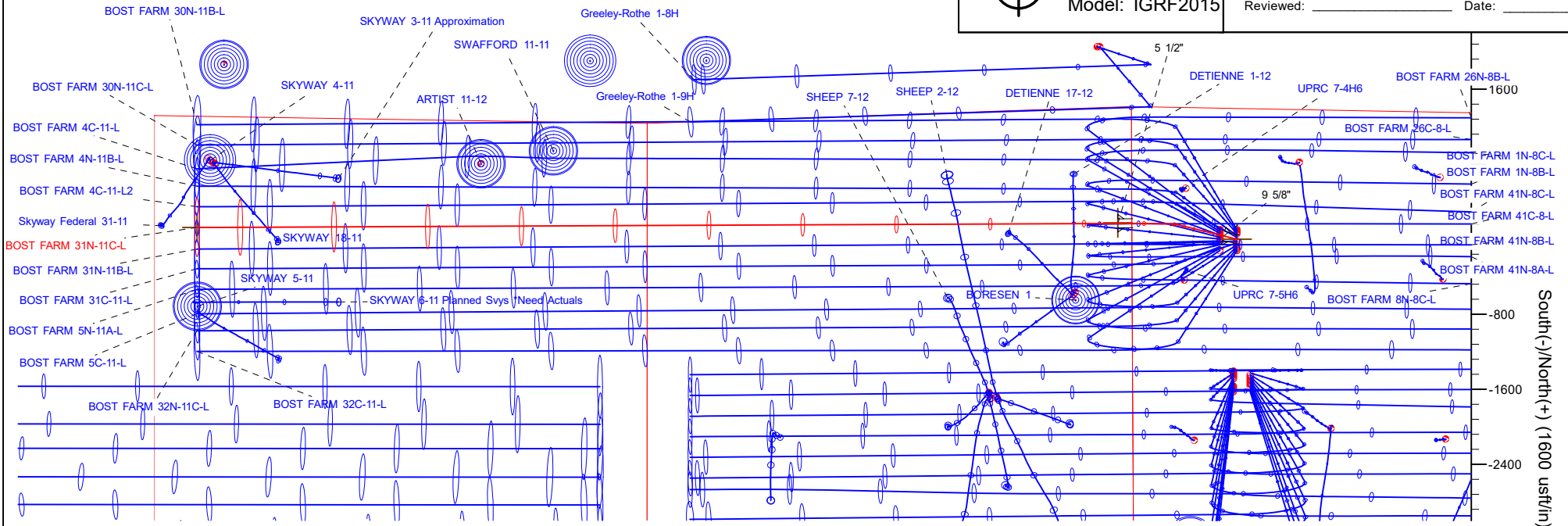
## WELL DETAILS: BOST FARM 31N-11C-L

GL = 4878'

RKB = 20' @ 4898.00usft (PD 462)

Plan: Design #1 (BOST FARM 31N-11C-L/Wellbore #1)

Created By: \_\_\_\_\_ Date: 12/28/2017  
Reviewed: \_\_\_\_\_ Date: \_\_\_\_\_



# Hewlett-Packard

## Planning Report

<b>Database:</b>	EDM 5000.14 Single User Db	<b>Local Co-ordinate Reference:</b>	Well BOST FARM 31N-11C-L
<b>Company:</b>	SRC ENERGY	<b>TVD Reference:</b>	RKB = 20' @ 4898.00usft (PD 462)
<b>Project:</b>	WELD COUNTY (NAD83, TRUE NORTH)	<b>MD Reference:</b>	RKB = 20' @ 4898.00usft (PD 462)
<b>Site:</b>	5N-66W-07 BOST FARM 5-7 PAD	<b>North Reference:</b>	True
<b>Well:</b>	BOST FARM 31N-11C-L	<b>Survey Calculation Method:</b>	Minimum Curvature
<b>Wellbore:</b>	Wellbore #1		
<b>Design:</b>	Design #1		

<b>Project</b>	WELD COUNTY (NAD83, TRUE NORTH)		
<b>Map System:</b>	US State Plane 1983	<b>System Datum:</b>	Mean Sea Level
<b>Geo Datum:</b>	North American Datum 1983		
<b>Map Zone:</b>	Colorado Northern Zone		

<b>Site</b>	5N-66W-07 BOST FARM 5-7 PAD			
<b>Site Position:</b>		<b>Northing:</b>	1,395,815.76 usft	<b>Latitude:</b> 40.417972
<b>From:</b>	Lat/Long	<b>Easting:</b>	3,187,006.76 usft	<b>Longitude:</b> -104.828362
<b>Position Uncertainty:</b>	0.00 usft	<b>Slot Radius:</b>	13-3/16 "	<b>Grid Convergence:</b> 0.43 °

<b>Well</b>	BOST FARM 31N-11C-L			
<b>Well Position</b>	<b>+N/-S</b>	-99.83 usft	<b>Northing:</b>	1,395,715.93 usft
	<b>+E/-W</b>	-0.84 usft	<b>Easting:</b>	3,187,006.68 usft
<b>Position Uncertainty</b>		3.28 usft	<b>Wellhead Elevation:</b>	<b>Ground Level:</b> 4,878.00 usft

<b>Wellbore</b>	Wellbore #1				
<b>Magnetics</b>	<b>Model Name</b>	<b>Sample Date</b>	<b>Declination (°)</b>	<b>Dip Angle (°)</b>	<b>Field Strength (nT)</b>
	IGRF2015	12/18/2017	8.19	66.85	52,336.82058202

<b>Design</b>	Design #1			
<b>Audit Notes:</b>				
<b>Version:</b>	<b>Phase:</b>	PLAN	<b>Tie On Depth:</b>	0.00
<b>Vertical Section:</b>	<b>Depth From (TVD) (usft)</b>	<b>+N/-S (usft)</b>	<b>+E/-W (usft)</b>	<b>Direction (°)</b>
	0.00	0.00	0.00	270.65

<b>Plan Survey Tool Program</b>	<b>Date</b>	12/28/2017		
<b>Depth From (usft)</b>	<b>Depth To (usft)</b>	<b>Survey (Wellbore)</b>	<b>Tool Name</b>	<b>Remarks</b>
1	0.00	1,750.00	Design #1 (Wellbore #1)	SRC Energy_ISCWSA REV 2 Fixed:v2:crustal field declinatio
2	1,750.00	17,260.97	Design #1 (Wellbore #1)	SRC Energy_ISCWSA REV 2 Fixed:v2:crustal field declinatio

<b>Plan Sections</b>										
<b>Measured Depth (usft)</b>	<b>Inclination (°)</b>	<b>Azimuth (°)</b>	<b>Vertical Depth (usft)</b>	<b>+N/-S (usft)</b>	<b>+E/-W (usft)</b>	<b>Dogleg Rate (°/100usft)</b>	<b>Build Rate (°/100usft)</b>	<b>Turn Rate (°/100usft)</b>	<b>TFO (°)</b>	<b>Target</b>
0.00	0.00	0.00	0.00	0.00	0.00	0.00	0.00	0.00	0.00	
250.00	0.00	0.00	250.00	0.00	0.00	0.00	0.00	0.00	0.00	
557.50	6.15	283.80	556.91	3.93	-16.01	2.00	2.00	0.00	283.80	
6,502.55	6.15	283.80	6,467.75	155.86	-634.53	0.00	0.00	0.00	0.00	
7,437.89	90.15	269.75	7,038.00	168.07	-1,269.38	9.00	8.98	-1.50	-14.12	
17,260.97	90.15	269.75	7,013.00	125.64	-11,092.34	0.00	0.00	0.00	0.00	BOST FARM 31N-11C

# Hewlett-Packard

## Planning Report

<b>Database:</b>	EDM 5000.14 Single User Db	<b>Local Co-ordinate Reference:</b>	Well BOST FARM 31N-11C-L
<b>Company:</b>	SRC ENERGY	<b>TVD Reference:</b>	RKB = 20' @ 4898.00usft (PD 462)
<b>Project:</b>	WELD COUNTY (NAD83, TRUE NORTH)	<b>MD Reference:</b>	RKB = 20' @ 4898.00usft (PD 462)
<b>Site:</b>	5N-66W-07 BOST FARM 5-7 PAD	<b>North Reference:</b>	True
<b>Well:</b>	BOST FARM 31N-11C-L	<b>Survey Calculation Method:</b>	Minimum Curvature
<b>Wellbore:</b>	Wellbore #1		
<b>Design:</b>	Design #1		

Planned Survey									
Measured Depth (usft)	Inclination (°)	Azimuth (°)	Vertical Depth (usft)	+N/-S (usft)	+E/-W (usft)	Vertical Section (usft)	Dogleg Rate (°/100usft)	Build Rate (°/100usft)	Turn Rate (°/100usft)
0.00	0.00	0.00	0.00	0.00	0.00	0.00	0.00	0.00	0.00
100.00	0.00	0.00	100.00	0.00	0.00	0.00	0.00	0.00	0.00
200.00	0.00	0.00	200.00	0.00	0.00	0.00	0.00	0.00	0.00
250.00	0.00	0.00	250.00	0.00	0.00	0.00	0.00	0.00	0.00
Begin Nudge @ 250.00ft									
300.00	1.00	283.80	300.00	0.10	-0.42	0.42	2.00	2.00	0.00
400.00	3.00	283.80	399.93	0.94	-3.81	3.82	2.00	2.00	0.00
500.00	5.00	283.80	499.68	2.60	-10.59	10.62	2.00	2.00	0.00
557.50	6.15	283.80	556.91	3.93	-16.01	16.05	2.00	2.00	0.00
End Nudge @ 557.50ft									
600.00	6.15	283.80	599.17	5.02	-20.43	20.49	0.00	0.00	0.00
700.00	6.15	283.80	698.59	7.57	-30.84	30.92	0.00	0.00	0.00
800.00	6.15	283.80	798.01	10.13	-41.24	41.35	0.00	0.00	0.00
900.00	6.15	283.80	897.44	12.69	-51.64	51.79	0.00	0.00	0.00
1,000.00	6.15	283.80	996.86	15.24	-62.05	62.22	0.00	0.00	0.00
1,100.00	6.15	283.80	1,096.29	17.80	-72.45	72.65	0.00	0.00	0.00
1,200.00	6.15	283.80	1,195.71	20.35	-82.86	83.08	0.00	0.00	0.00
1,300.00	6.15	283.80	1,295.14	22.91	-93.26	93.51	0.00	0.00	0.00
1,400.00	6.15	283.80	1,394.56	25.46	-103.66	103.95	0.00	0.00	0.00
1,500.00	6.15	283.80	1,493.99	28.02	-114.07	114.38	0.00	0.00	0.00
1,600.00	6.15	283.80	1,593.41	30.57	-124.47	124.81	0.00	0.00	0.00
1,700.00	6.15	283.80	1,692.83	33.13	-134.88	135.24	0.00	0.00	0.00
1,757.50	6.15	283.80	1,750.00	34.60	-140.86	141.24	0.00	0.00	0.00
9 5/8"									
1,800.00	6.15	283.80	1,792.26	35.68	-145.28	145.68	0.00	0.00	0.00
1,900.00	6.15	283.80	1,891.68	38.24	-155.68	156.11	0.00	0.00	0.00
2,000.00	6.15	283.80	1,991.11	40.80	-166.09	166.54	0.00	0.00	0.00
2,100.00	6.15	283.80	2,090.53	43.35	-176.49	176.97	0.00	0.00	0.00
2,200.00	6.15	283.80	2,189.96	45.91	-186.90	187.40	0.00	0.00	0.00
2,300.00	6.15	283.80	2,289.38	48.46	-197.30	197.84	0.00	0.00	0.00
2,400.00	6.15	283.80	2,388.81	51.02	-207.70	208.27	0.00	0.00	0.00
2,500.00	6.15	283.80	2,488.23	53.57	-218.11	218.70	0.00	0.00	0.00
2,600.00	6.15	283.80	2,587.65	56.13	-228.51	229.13	0.00	0.00	0.00
2,700.00	6.15	283.80	2,687.08	58.68	-238.92	239.56	0.00	0.00	0.00
2,800.00	6.15	283.80	2,786.50	61.24	-249.32	250.00	0.00	0.00	0.00
2,900.00	6.15	283.80	2,885.93	63.79	-259.72	260.43	0.00	0.00	0.00
3,000.00	6.15	283.80	2,985.35	66.35	-270.13	270.86	0.00	0.00	0.00
3,100.00	6.15	283.80	3,084.78	68.91	-280.53	281.29	0.00	0.00	0.00
3,200.00	6.15	283.80	3,184.20	71.46	-290.94	291.73	0.00	0.00	0.00
3,300.00	6.15	283.80	3,283.63	74.02	-301.34	302.16	0.00	0.00	0.00
3,400.00	6.15	283.80	3,383.05	76.57	-311.74	312.59	0.00	0.00	0.00
3,500.00	6.15	283.80	3,482.48	79.13	-322.15	323.02	0.00	0.00	0.00
3,600.00	6.15	283.80	3,581.90	81.68	-332.55	333.45	0.00	0.00	0.00
3,700.00	6.15	283.80	3,681.32	84.24	-342.95	343.89	0.00	0.00	0.00
3,800.00	6.15	283.80	3,780.75	86.79	-353.36	354.32	0.00	0.00	0.00
3,900.00	6.15	283.80	3,880.17	89.35	-363.76	364.75	0.00	0.00	0.00
4,000.00	6.15	283.80	3,979.60	91.90	-374.17	375.18	0.00	0.00	0.00
4,100.00	6.15	283.80	4,079.02	94.46	-384.57	385.62	0.00	0.00	0.00
4,200.00	6.15	283.80	4,178.45	97.02	-394.97	396.05	0.00	0.00	0.00
4,300.00	6.15	283.80	4,277.87	99.57	-405.38	406.48	0.00	0.00	0.00
4,400.00	6.15	283.80	4,377.30	102.13	-415.78	416.91	0.00	0.00	0.00
4,500.00	6.15	283.80	4,476.72	104.68	-426.19	427.34	0.00	0.00	0.00
4,600.00	6.15	283.80	4,576.14	107.24	-436.59	437.78	0.00	0.00	0.00

# Hewlett-Packard

## Planning Report

<b>Database:</b>	EDM 5000.14 Single User Db	<b>Local Co-ordinate Reference:</b>	Well BOST FARM 31N-11C-L
<b>Company:</b>	SRC ENERGY	<b>TVD Reference:</b>	RKB = 20' @ 4898.00usft (PD 462)
<b>Project:</b>	WELD COUNTY (NAD83, TRUE NORTH)	<b>MD Reference:</b>	RKB = 20' @ 4898.00usft (PD 462)
<b>Site:</b>	5N-66W-07 BOST FARM 5-7 PAD	<b>North Reference:</b>	True
<b>Well:</b>	BOST FARM 31N-11C-L	<b>Survey Calculation Method:</b>	Minimum Curvature
<b>Wellbore:</b>	Wellbore #1		
<b>Design:</b>	Design #1		

Planned Survey									
Measured Depth (usft)	Inclination (°)	Azimuth (°)	Vertical Depth (usft)	+N/-S (usft)	+E/-W (usft)	Vertical Section (usft)	Dogleg Rate (°/100usft)	Build Rate (°/100usft)	Turn Rate (°/100usft)
4,700.00	6.15	283.80	4,675.57	109.79	-446.99	448.21	0.00	0.00	0.00
4,800.00	6.15	283.80	4,774.99	112.35	-457.40	458.64	0.00	0.00	0.00
4,900.00	6.15	283.80	4,874.42	114.90	-467.80	469.07	0.00	0.00	0.00
5,000.00	6.15	283.80	4,973.84	117.46	-478.21	479.51	0.00	0.00	0.00
5,100.00	6.15	283.80	5,073.27	120.01	-488.61	489.94	0.00	0.00	0.00
5,200.00	6.15	283.80	5,172.69	122.57	-499.01	500.37	0.00	0.00	0.00
5,300.00	6.15	283.80	5,272.12	125.13	-509.42	510.80	0.00	0.00	0.00
5,400.00	6.15	283.80	5,371.54	127.68	-519.82	521.23	0.00	0.00	0.00
5,500.00	6.15	283.80	5,470.97	130.24	-530.23	531.67	0.00	0.00	0.00
5,600.00	6.15	283.80	5,570.39	132.79	-540.63	542.10	0.00	0.00	0.00
5,700.00	6.15	283.80	5,669.81	135.35	-551.03	552.53	0.00	0.00	0.00
5,800.00	6.15	283.80	5,769.24	137.90	-561.44	562.96	0.00	0.00	0.00
5,900.00	6.15	283.80	5,868.66	140.46	-571.84	573.40	0.00	0.00	0.00
6,000.00	6.15	283.80	5,968.09	143.01	-582.25	583.83	0.00	0.00	0.00
6,100.00	6.15	283.80	6,067.51	145.57	-592.65	594.26	0.00	0.00	0.00
6,200.00	6.15	283.80	6,166.94	148.12	-603.05	604.69	0.00	0.00	0.00
6,300.00	6.15	283.80	6,266.36	150.68	-613.46	615.12	0.00	0.00	0.00
6,400.00	6.15	283.80	6,365.79	153.23	-623.86	625.56	0.00	0.00	0.00
6,502.55	6.15	283.80	6,467.75	155.86	-634.53	636.25	0.00	0.00	0.00
<b>KOP @ 6502.55ft :: DLS = 9°/100'</b>									
6,550.00	10.34	277.99	6,514.69	157.05	-641.22	642.96	9.00	8.84	-12.24
6,600.00	14.81	275.43	6,563.48	158.28	-652.03	653.78	9.00	8.93	-5.12
6,650.00	19.29	274.04	6,611.27	159.47	-666.64	668.40	9.00	8.96	-2.78
6,700.00	23.78	273.16	6,657.77	160.61	-684.96	686.73	9.00	8.98	-1.76
6,750.00	28.27	272.54	6,702.69	161.69	-706.86	708.65	9.00	8.98	-1.23
6,800.00	32.77	272.08	6,745.75	162.71	-732.23	734.02	9.00	8.99	-0.92
6,850.00	37.26	271.73	6,786.69	163.66	-760.89	762.70	9.00	8.99	-0.72
6,900.00	41.76	271.43	6,825.26	164.53	-792.68	794.50	9.00	8.99	-0.58
6,950.00	46.25	271.19	6,861.21	165.32	-827.40	829.22	9.00	8.99	-0.49
7,000.00	50.75	270.98	6,894.33	166.03	-864.83	866.66	9.00	8.99	-0.42
7,050.00	55.25	270.80	6,924.41	166.65	-904.75	906.58	9.00	9.00	-0.37
7,100.00	59.75	270.63	6,951.27	167.17	-946.91	948.74	9.00	9.00	-0.33
7,150.00	64.25	270.48	6,974.74	167.60	-991.04	992.87	9.00	9.00	-0.30
7,200.00	68.74	270.34	6,994.68	167.92	-1,036.88	1,038.71	9.00	9.00	-0.28
7,250.00	73.24	270.21	7,010.96	168.15	-1,084.14	1,085.97	9.00	9.00	-0.26
7,300.00	77.74	270.08	7,023.48	168.27	-1,132.53	1,134.36	9.00	9.00	-0.25
7,350.00	82.24	269.96	7,032.17	168.29	-1,181.76	1,183.59	9.00	9.00	-0.24
7,400.00	86.74	269.84	7,036.97	168.20	-1,231.51	1,233.34	9.00	9.00	-0.24
7,437.89	90.15	269.75	7,038.00	168.07	-1,269.38	1,271.21	9.00	9.00	-0.24
<b>End Build @ 7437.89ft - 5 1/2"</b>									
7,500.00	90.15	269.75	7,037.85	167.80	-1,331.49	1,333.31	0.00	0.00	0.00
7,600.00	90.15	269.75	7,037.59	167.37	-1,431.49	1,433.30	0.00	0.00	0.00
7,700.00	90.15	269.75	7,037.34	166.93	-1,531.49	1,533.28	0.00	0.00	0.00
7,800.00	90.15	269.75	7,037.08	166.50	-1,631.49	1,633.27	0.00	0.00	0.00
7,900.00	90.15	269.75	7,036.83	166.07	-1,731.49	1,733.26	0.00	0.00	0.00
8,000.00	90.15	269.75	7,036.57	165.64	-1,831.49	1,833.25	0.00	0.00	0.00
8,100.00	90.15	269.75	7,036.32	165.21	-1,931.49	1,933.23	0.00	0.00	0.00
8,200.00	90.15	269.75	7,036.06	164.77	-2,031.48	2,033.22	0.00	0.00	0.00
8,300.00	90.15	269.75	7,035.81	164.34	-2,131.48	2,133.21	0.00	0.00	0.00
8,400.00	90.15	269.75	7,035.56	163.91	-2,231.48	2,233.19	0.00	0.00	0.00
8,500.00	90.15	269.75	7,035.30	163.48	-2,331.48	2,333.18	0.00	0.00	0.00
8,600.00	90.15	269.75	7,035.05	163.05	-2,431.48	2,433.17	0.00	0.00	0.00
8,700.00	90.15	269.75	7,034.79	162.61	-2,531.48	2,533.16	0.00	0.00	0.00
8,800.00	90.15	269.75	7,034.54	162.18	-2,631.48	2,633.14	0.00	0.00	0.00

# Hewlett-Packard

## Planning Report

<b>Database:</b>	EDM 5000.14 Single User Db	<b>Local Co-ordinate Reference:</b>	Well BOST FARM 31N-11C-L
<b>Company:</b>	SRC ENERGY	<b>TVD Reference:</b>	RKB = 20' @ 4898.00usft (PD 462)
<b>Project:</b>	WELD COUNTY (NAD83, TRUE NORTH)	<b>MD Reference:</b>	RKB = 20' @ 4898.00usft (PD 462)
<b>Site:</b>	5N-66W-07 BOST FARM 5-7 PAD	<b>North Reference:</b>	True
<b>Well:</b>	BOST FARM 31N-11C-L	<b>Survey Calculation Method:</b>	Minimum Curvature
<b>Wellbore:</b>	Wellbore #1		
<b>Design:</b>	Design #1		

Planned Survey										
Measured Depth (usft)	Inclination (°)	Azimuth (°)	Vertical Depth (usft)	+N/-S (usft)	+E/-W (usft)	Vertical Section (usft)	Dogleg Rate (°/100usft)	Build Rate (°/100usft)	Turn Rate (°/100usft)	
8,900.00	90.15	269.75	7,034.28	161.75	-2,731.48	2,733.13	0.00	0.00	0.00	
9,000.00	90.15	269.75	7,034.03	161.32	-2,831.47	2,833.12	0.00	0.00	0.00	
9,100.00	90.15	269.75	7,033.77	160.89	-2,931.47	2,933.11	0.00	0.00	0.00	
9,200.00	90.15	269.75	7,033.52	160.46	-3,031.47	3,033.09	0.00	0.00	0.00	
9,300.00	90.15	269.75	7,033.26	160.02	-3,131.47	3,133.08	0.00	0.00	0.00	
9,400.00	90.15	269.75	7,033.01	159.59	-3,231.47	3,233.07	0.00	0.00	0.00	
9,500.00	90.15	269.75	7,032.76	159.16	-3,331.47	3,333.06	0.00	0.00	0.00	
9,600.00	90.15	269.75	7,032.50	158.73	-3,431.47	3,433.04	0.00	0.00	0.00	
9,700.00	90.15	269.75	7,032.25	158.30	-3,531.47	3,533.03	0.00	0.00	0.00	
9,800.00	90.15	269.75	7,031.99	157.86	-3,631.46	3,633.02	0.00	0.00	0.00	
9,900.00	90.15	269.75	7,031.74	157.43	-3,731.46	3,733.01	0.00	0.00	0.00	
10,000.00	90.15	269.75	7,031.48	157.00	-3,831.46	3,832.99	0.00	0.00	0.00	
10,100.00	90.15	269.75	7,031.23	156.57	-3,931.46	3,932.98	0.00	0.00	0.00	
10,200.00	90.15	269.75	7,030.97	156.14	-4,031.46	4,032.97	0.00	0.00	0.00	
10,300.00	90.15	269.75	7,030.72	155.70	-4,131.46	4,132.96	0.00	0.00	0.00	
10,400.00	90.15	269.75	7,030.46	155.27	-4,231.46	4,232.94	0.00	0.00	0.00	
10,500.00	90.15	269.75	7,030.21	154.84	-4,331.46	4,332.93	0.00	0.00	0.00	
10,600.00	90.15	269.75	7,029.96	154.41	-4,431.45	4,432.92	0.00	0.00	0.00	
10,700.00	90.15	269.75	7,029.70	153.98	-4,531.45	4,532.91	0.00	0.00	0.00	
10,800.00	90.15	269.75	7,029.45	153.54	-4,631.45	4,632.89	0.00	0.00	0.00	
10,900.00	90.15	269.75	7,029.19	153.11	-4,731.45	4,732.88	0.00	0.00	0.00	
11,000.00	90.15	269.75	7,028.94	152.68	-4,831.45	4,832.87	0.00	0.00	0.00	
11,100.00	90.15	269.75	7,028.68	152.25	-4,931.45	4,932.86	0.00	0.00	0.00	
11,200.00	90.15	269.75	7,028.43	151.82	-5,031.45	5,032.84	0.00	0.00	0.00	
11,300.00	90.15	269.75	7,028.17	151.38	-5,131.45	5,132.83	0.00	0.00	0.00	
11,400.00	90.15	269.75	7,027.92	150.95	-5,231.44	5,232.82	0.00	0.00	0.00	
11,500.00	90.15	269.75	7,027.66	150.52	-5,331.44	5,332.81	0.00	0.00	0.00	
11,600.00	90.15	269.75	7,027.41	150.09	-5,431.44	5,432.79	0.00	0.00	0.00	
11,700.00	90.15	269.75	7,027.16	149.66	-5,531.44	5,532.78	0.00	0.00	0.00	
11,800.00	90.15	269.75	7,026.90	149.22	-5,631.44	5,632.77	0.00	0.00	0.00	
11,900.00	90.15	269.75	7,026.65	148.79	-5,731.44	5,732.76	0.00	0.00	0.00	
12,000.00	90.15	269.75	7,026.39	148.36	-5,831.44	5,832.74	0.00	0.00	0.00	
12,100.00	90.15	269.75	7,026.14	147.93	-5,931.44	5,932.73	0.00	0.00	0.00	
12,200.00	90.15	269.75	7,025.88	147.50	-6,031.43	6,032.72	0.00	0.00	0.00	
12,300.00	90.15	269.75	7,025.63	147.07	-6,131.43	6,132.71	0.00	0.00	0.00	
12,400.00	90.15	269.75	7,025.37	146.63	-6,231.43	6,232.69	0.00	0.00	0.00	
12,500.00	90.15	269.75	7,025.12	146.20	-6,331.43	6,332.68	0.00	0.00	0.00	
12,600.00	90.15	269.75	7,024.86	145.77	-6,431.43	6,432.67	0.00	0.00	0.00	
12,700.00	90.15	269.75	7,024.61	145.34	-6,531.43	6,532.65	0.00	0.00	0.00	
12,800.00	90.15	269.75	7,024.36	144.91	-6,631.43	6,632.64	0.00	0.00	0.00	
12,900.00	90.15	269.75	7,024.10	144.47	-6,731.43	6,732.63	0.00	0.00	0.00	
13,000.00	90.15	269.75	7,023.85	144.04	-6,831.42	6,832.62	0.00	0.00	0.00	
13,100.00	90.15	269.75	7,023.59	143.61	-6,931.42	6,932.60	0.00	0.00	0.00	
13,200.00	90.15	269.75	7,023.34	143.18	-7,031.42	7,032.59	0.00	0.00	0.00	
13,300.00	90.15	269.75	7,023.08	142.75	-7,131.42	7,132.58	0.00	0.00	0.00	
13,400.00	90.15	269.75	7,022.83	142.31	-7,231.42	7,232.57	0.00	0.00	0.00	
13,500.00	90.15	269.75	7,022.57	141.88	-7,331.42	7,332.55	0.00	0.00	0.00	
13,600.00	90.15	269.75	7,022.32	141.45	-7,431.42	7,432.54	0.00	0.00	0.00	
13,700.00	90.15	269.75	7,022.06	141.02	-7,531.42	7,532.53	0.00	0.00	0.00	
13,800.00	90.15	269.75	7,021.81	140.59	-7,631.41	7,632.52	0.00	0.00	0.00	
13,900.00	90.15	269.75	7,021.56	140.15	-7,731.41	7,732.50	0.00	0.00	0.00	
14,000.00	90.15	269.75	7,021.30	139.72	-7,831.41	7,832.49	0.00	0.00	0.00	
14,100.00	90.15	269.75	7,021.05	139.29	-7,931.41	7,932.48	0.00	0.00	0.00	
14,200.00	90.15	269.75	7,020.79	138.86	-8,031.41	8,032.47	0.00	0.00	0.00	

# Hewlett-Packard

## Planning Report

<b>Database:</b>	EDM 5000.14 Single User Db	<b>Local Co-ordinate Reference:</b>	Well BOST FARM 31N-11C-L
<b>Company:</b>	SRC ENERGY	<b>TVD Reference:</b>	RKB = 20' @ 4898.00usft (PD 462)
<b>Project:</b>	WELD COUNTY (NAD83, TRUE NORTH)	<b>MD Reference:</b>	RKB = 20' @ 4898.00usft (PD 462)
<b>Site:</b>	5N-66W-07 BOST FARM 5-7 PAD	<b>North Reference:</b>	True
<b>Well:</b>	BOST FARM 31N-11C-L	<b>Survey Calculation Method:</b>	Minimum Curvature
<b>Wellbore:</b>	Wellbore #1		
<b>Design:</b>	Design #1		

Planned Survey										
Measured Depth (usft)	Inclination (°)	Azimuth (°)	Vertical Depth (usft)	+N/-S (usft)	+E/-W (usft)	Vertical Section (usft)	Dogleg Rate (°/100usft)	Build Rate (°/100usft)	Turn Rate (°/100usft)	
14,300.00	90.15	269.75	7,020.54	138.43	-8,131.41	8,132.45	0.00	0.00	0.00	
14,400.00	90.15	269.75	7,020.28	137.99	-8,231.41	8,232.44	0.00	0.00	0.00	
14,500.00	90.15	269.75	7,020.03	137.56	-8,331.41	8,332.43	0.00	0.00	0.00	
14,600.00	90.15	269.75	7,019.77	137.13	-8,431.40	8,432.42	0.00	0.00	0.00	
14,700.00	90.15	269.75	7,019.52	136.70	-8,531.40	8,532.40	0.00	0.00	0.00	
14,800.00	90.15	269.75	7,019.26	136.27	-8,631.40	8,632.39	0.00	0.00	0.00	
14,900.00	90.15	269.75	7,019.01	135.83	-8,731.40	8,732.38	0.00	0.00	0.00	
15,000.00	90.15	269.75	7,018.76	135.40	-8,831.40	8,832.37	0.00	0.00	0.00	
15,100.00	90.15	269.75	7,018.50	134.97	-8,931.40	8,932.35	0.00	0.00	0.00	
15,200.00	90.15	269.75	7,018.25	134.54	-9,031.40	9,032.34	0.00	0.00	0.00	
15,300.00	90.15	269.75	7,017.99	134.11	-9,131.40	9,132.33	0.00	0.00	0.00	
15,400.00	90.15	269.75	7,017.74	133.68	-9,231.39	9,232.32	0.00	0.00	0.00	
15,500.00	90.15	269.75	7,017.48	133.24	-9,331.39	9,332.30	0.00	0.00	0.00	
15,600.00	90.15	269.75	7,017.23	132.81	-9,431.39	9,432.29	0.00	0.00	0.00	
15,700.00	90.15	269.75	7,016.97	132.38	-9,531.39	9,532.28	0.00	0.00	0.00	
15,800.00	90.15	269.75	7,016.72	131.95	-9,631.39	9,632.27	0.00	0.00	0.00	
15,900.00	90.15	269.75	7,016.46	131.52	-9,731.39	9,732.25	0.00	0.00	0.00	
16,000.00	90.15	269.75	7,016.21	131.08	-9,831.39	9,832.24	0.00	0.00	0.00	
16,100.00	90.15	269.75	7,015.96	130.65	-9,931.39	9,932.23	0.00	0.00	0.00	
16,200.00	90.15	269.75	7,015.70	130.22	-10,031.38	10,032.22	0.00	0.00	0.00	
16,300.00	90.15	269.75	7,015.45	129.79	-10,131.38	10,132.20	0.00	0.00	0.00	
16,400.00	90.15	269.75	7,015.19	129.36	-10,231.38	10,232.19	0.00	0.00	0.00	
16,500.00	90.15	269.75	7,014.94	128.92	-10,331.38	10,332.18	0.00	0.00	0.00	
16,600.00	90.15	269.75	7,014.68	128.49	-10,431.38	10,432.16	0.00	0.00	0.00	
16,700.00	90.15	269.75	7,014.43	128.06	-10,531.38	10,532.15	0.00	0.00	0.00	
16,800.00	90.15	269.75	7,014.17	127.63	-10,631.38	10,632.14	0.00	0.00	0.00	
16,900.00	90.15	269.75	7,013.92	127.20	-10,731.38	10,732.13	0.00	0.00	0.00	
17,000.00	90.15	269.75	7,013.66	126.76	-10,831.37	10,832.11	0.00	0.00	0.00	
17,100.00	90.15	269.75	7,013.41	126.33	-10,931.37	10,932.10	0.00	0.00	0.00	
17,200.00	90.15	269.75	7,013.16	125.90	-11,031.37	11,032.09	0.00	0.00	0.00	
17,260.97	90.15	269.75	7,013.00	125.64	-11,092.34	11,093.06	0.00	0.00	0.00	
TD Well @ 17260.97ft										

Casing Points					
Measured Depth (usft)	Vertical Depth (usft)	Name	Casing Diameter (")	Hole Diameter (")	
1,757.50	1,750.00	9 5/8"	9-5/8	13-1/2	
7,437.89	7,038.00	5 1/2"	5-1/2	8-1/2	

Plan Annotations					
Measured Depth (usft)	Vertical Depth (usft)	Local Coordinates		Comment	
		+N/-S (usft)	+E/-W (usft)		
250.00	250.00	0.00	0.00	Begin Nudge @ 250.00ft	
557.50	556.91	3.93	-16.01	End Nudge @ 557.50ft	
6,502.55	6,467.75	155.86	-634.53	KOP @ 6502.55ft :: DLS = 9°/100'	
7,437.89	7,038.00	168.07	-1,269.38	End Build @ 7437.89ft	
17,260.97	7,013.00	125.64	-11,092.34	TD Well @ 17260.97ft	