

SRC ENERGY

WELD COUNTY (NAD83, TRUE NORTH)

5N-66W-07 BOST FARM 5-7 PAD

BOST FARM 4N-11B-L

Wellbore #1

Plan: Design #1

Standard Planning Report

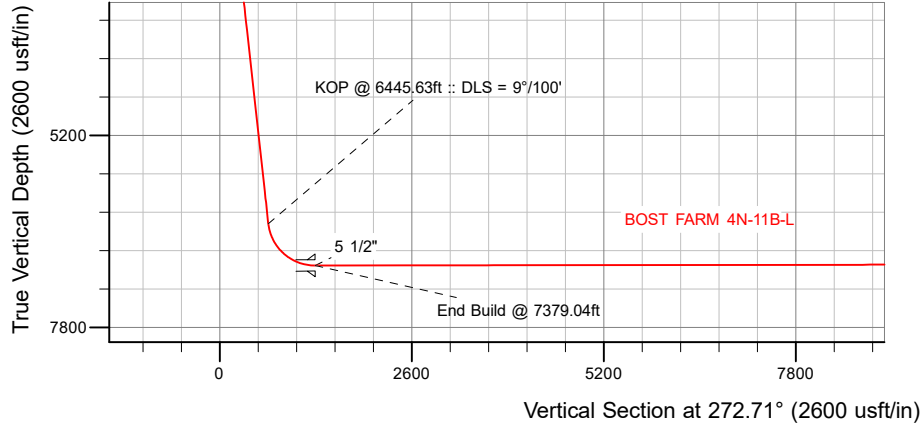
28 December, 2017

Project: WELD COUNTY (NAD83, TRUE NORTH)
 Site: 5N-66W-07 BOST FARM 5-7 PAD
 Well: BOST FARM 4N-11B-L
 Wellbore: Wellbore #1
 Design: Design #1

SRC ENERGY

CASING DETAILS

TVD	MD	Name	Size
1750.00	1760.66	9 5/8"	9-5/8
6963.00	7379.04	5 1/2"	5-1/2

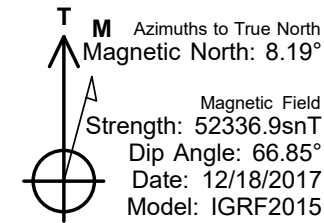
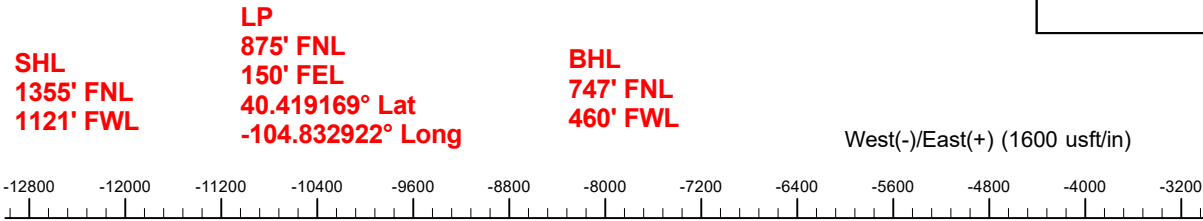


SECTION DETAILS

Sec	MD	Inc	Azi	TVD	+N-S	+E-W	Dleg	TFace	V Sect	Target
1	0.00	0.00	0.00	0.00	0.00	0.00	0.00	0.00	0.00	
2	250.00	0.00	0.00	250.00	0.00	0.00	0.00	0.00	0.00	
3	622.50	7.45	305.40	621.45	14.01	-19.71	2.00	305.40	20.35	
4	6445.63	7.45	305.40	6395.42	451.39	-635.16	0.00	0.00	655.83	
5	7379.04	90.09	270.17	6963.00	496.18	-1269.04	9.00	-35.45	1291.11	
6	17202.77	90.09	270.17	6948.00	526.00	-11092.70	0.00	0.00	11105.17	BOST FARM 4N-11B-L_BHL

WELLBORE TARGET DETAILS (LAT/LONG)

Name	TVD	+N-S	+E-W	Latitude	Longitude
BOST FARM 4N-11B-L_SHL	0.00	0.00	0.00	40.417807	-104.828364
BOST FARM 4N-11B-L_BHL	6948.00	526.00	-11092.70	40.419244	-104.868204



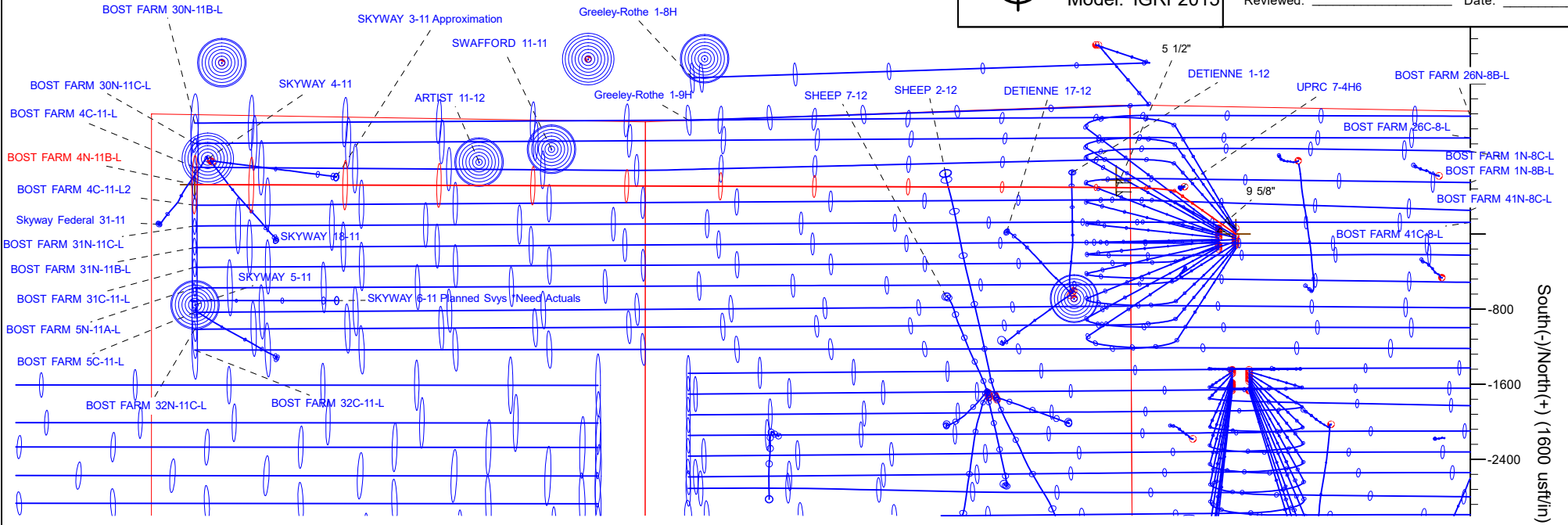
WELL DETAILS: BOST FARM 4N-11B-L

GL = 4878'

RKB = 20' @ 4898.00usft (PD 462)

Plan: Design #1 (BOST FARM 4N-11B-L/Wellbore #1)

Created By: _____ Date: 12/28/2017
 Reviewed: _____ Date: _____



Hewlett-Packard

Planning Report

Database:	EDM 5000.14 Single User Db	Local Co-ordinate Reference:	Well BOST FARM 4N-11B-L
Company:	SRC ENERGY	TVD Reference:	RKB = 20' @ 4898.00usft (PD 462)
Project:	WELD COUNTY (NAD83, TRUE NORTH)	MD Reference:	RKB = 20' @ 4898.00usft (PD 462)
Site:	5N-66W-07 BOST FARM 5-7 PAD	North Reference:	True
Well:	BOST FARM 4N-11B-L	Survey Calculation Method:	Minimum Curvature
Wellbore:	Wellbore #1		
Design:	Design #1		

Project	WELD COUNTY (NAD83, TRUE NORTH)		
Map System:	US State Plane 1983	System Datum:	Mean Sea Level
Geo Datum:	North American Datum 1983		
Map Zone:	Colorado Northern Zone		

Site	5N-66W-07 BOST FARM 5-7 PAD				
Site Position:		Northing:	1,395,815.76 usft	Latitude:	40.417972
From:	Lat/Long	Easting:	3,187,006.76 usft	Longitude:	-104.828362
Position Uncertainty:	0.00 usft	Slot Radius:	13-3/16 "	Grid Convergence:	0.43 °

Well	BOST FARM 4N-11B-L					
Well Position	+N/-S	-60.12 usft	Northing:	1,395,755.64 usft	Latitude:	40.417807
	+E/-W	-0.56 usft	Easting:	3,187,006.66 usft	Longitude:	-104.828364
Position Uncertainty		3.28 usft	Wellhead Elevation:		Ground Level:	4,878.00 usft

Wellbore	Wellbore #1				
Magnetics	Model Name	Sample Date	Declination (°)	Dip Angle (°)	Field Strength (nT)
	IGRF2015	12/18/2017	8.19	66.85	52,336.87719009

Design	Design #1				
Audit Notes:					
Version:	Phase:	PLAN	Tie On Depth:	0.00	
Vertical Section:	Depth From (TVD) (usft)	+N/-S (usft)	+E/-W (usft)	Direction (°)	
	0.00	0.00	0.00	272.71	

Plan Survey Tool Program	Date	12/27/2017			
Depth From (usft)	Depth To (usft)	Survey (Wellbore)	Tool Name	Remarks	
1	0.00	1,750.00	Design #1 (Wellbore #1)	SRC Energy_ISCWSA REV 2 Fixed:v2:crustal field declinatio	
2	1,750.00	17,202.77	Design #1 (Wellbore #1)	SRC Energy_ISCWSA REV 2 Fixed:v2:crustal field declinatio	

Plan Sections										
Measured Depth (usft)	Inclination (°)	Azimuth (°)	Vertical Depth (usft)	+N/-S (usft)	+E/-W (usft)	Dogleg Rate (°/100usft)	Build Rate (°/100usft)	Turn Rate (°/100usft)	TFO (°)	Target
0.00	0.00	0.00	0.00	0.00	0.00	0.00	0.00	0.00	0.00	
250.00	0.00	0.00	250.00	0.00	0.00	0.00	0.00	0.00	0.00	
622.50	7.45	305.40	621.45	14.01	-19.71	2.00	2.00	0.00	305.40	
6,445.63	7.45	305.40	6,395.42	451.39	-635.16	0.00	0.00	0.00	0.00	
7,379.04	90.09	270.17	6,963.00	496.18	-1,269.04	9.00	8.85	-3.77	-35.45	
17,202.77	90.09	270.17	6,948.00	526.00	-11,092.70	0.00	0.00	0.00	0.00	BOST FARM 4N-11B-

Hewlett-Packard

Planning Report

Database:	EDM 5000.14 Single User Db	Local Co-ordinate Reference:	Well BOST FARM 4N-11B-L
Company:	SRC ENERGY	TVD Reference:	RKB = 20' @ 4898.00usft (PD 462)
Project:	WELD COUNTY (NAD83, TRUE NORTH)	MD Reference:	RKB = 20' @ 4898.00usft (PD 462)
Site:	5N-66W-07 BOST FARM 5-7 PAD	North Reference:	True
Well:	BOST FARM 4N-11B-L	Survey Calculation Method:	Minimum Curvature
Wellbore:	Wellbore #1		
Design:	Design #1		

Planned Survey									
Measured Depth (usft)	Inclination (°)	Azimuth (°)	Vertical Depth (usft)	+N/-S (usft)	+E/-W (usft)	Vertical Section (usft)	Dogleg Rate (°/100usft)	Build Rate (°/100usft)	Turn Rate (°/100usft)
0.00	0.00	0.00	0.00	0.00	0.00	0.00	0.00	0.00	0.00
100.00	0.00	0.00	100.00	0.00	0.00	0.00	0.00	0.00	0.00
200.00	0.00	0.00	200.00	0.00	0.00	0.00	0.00	0.00	0.00
250.00	0.00	0.00	250.00	0.00	0.00	0.00	0.00	0.00	0.00
Begin Nudge @ 250.00ft									
300.00	1.00	305.40	300.00	0.25	-0.36	0.37	2.00	2.00	0.00
400.00	3.00	305.40	399.93	2.27	-3.20	3.30	2.00	2.00	0.00
500.00	5.00	305.40	499.68	6.31	-8.89	9.18	2.00	2.00	0.00
600.00	7.00	305.40	599.13	12.37	-17.41	17.97	2.00	2.00	0.00
622.50	7.45	305.40	621.45	14.01	-19.71	20.35	2.00	2.00	0.00
End Nudge @ 622.50ft									
700.00	7.45	305.40	698.30	19.83	-27.90	28.81	0.00	0.00	0.00
800.00	7.45	305.40	797.45	27.34	-38.47	39.72	0.00	0.00	0.00
900.00	7.45	305.40	896.61	34.85	-49.04	50.64	0.00	0.00	0.00
1,000.00	7.45	305.40	995.76	42.36	-59.61	61.55	0.00	0.00	0.00
1,100.00	7.45	305.40	1,094.92	49.87	-70.18	72.46	0.00	0.00	0.00
1,200.00	7.45	305.40	1,194.08	57.39	-80.75	83.38	0.00	0.00	0.00
1,300.00	7.45	305.40	1,293.23	64.90	-91.32	94.29	0.00	0.00	0.00
1,400.00	7.45	305.40	1,392.39	72.41	-101.89	105.20	0.00	0.00	0.00
1,500.00	7.45	305.40	1,491.54	79.92	-112.46	116.11	0.00	0.00	0.00
1,600.00	7.45	305.40	1,590.70	87.43	-123.02	127.03	0.00	0.00	0.00
1,700.00	7.45	305.40	1,689.86	94.94	-133.59	137.94	0.00	0.00	0.00
1,760.66	7.45	305.40	1,750.00	99.50	-140.00	144.56	0.00	0.00	0.00
9 5/8"									
1,800.00	7.45	305.40	1,789.01	102.45	-144.16	148.85	0.00	0.00	0.00
1,900.00	7.45	305.40	1,888.17	109.96	-154.73	159.77	0.00	0.00	0.00
2,000.00	7.45	305.40	1,987.32	117.47	-165.30	170.68	0.00	0.00	0.00
2,100.00	7.45	305.40	2,086.48	124.98	-175.87	181.59	0.00	0.00	0.00
2,200.00	7.45	305.40	2,185.63	132.50	-186.44	192.51	0.00	0.00	0.00
2,300.00	7.45	305.40	2,284.79	140.01	-197.01	203.42	0.00	0.00	0.00
2,400.00	7.45	305.40	2,383.95	147.52	-207.58	214.33	0.00	0.00	0.00
2,500.00	7.45	305.40	2,483.10	155.03	-218.15	225.24	0.00	0.00	0.00
2,600.00	7.45	305.40	2,582.26	162.54	-228.72	236.16	0.00	0.00	0.00
2,700.00	7.45	305.40	2,681.41	170.05	-239.28	247.07	0.00	0.00	0.00
2,800.00	7.45	305.40	2,780.57	177.56	-249.85	257.98	0.00	0.00	0.00
2,900.00	7.45	305.40	2,879.73	185.07	-260.42	268.90	0.00	0.00	0.00
3,000.00	7.45	305.40	2,978.88	192.58	-270.99	279.81	0.00	0.00	0.00
3,100.00	7.45	305.40	3,078.04	200.09	-281.56	290.72	0.00	0.00	0.00
3,200.00	7.45	305.40	3,177.19	207.61	-292.13	301.63	0.00	0.00	0.00
3,300.00	7.45	305.40	3,276.35	215.12	-302.70	312.55	0.00	0.00	0.00
3,400.00	7.45	305.40	3,375.50	222.63	-313.27	323.46	0.00	0.00	0.00
3,500.00	7.45	305.40	3,474.66	230.14	-323.84	334.37	0.00	0.00	0.00
3,600.00	7.45	305.40	3,573.82	237.65	-334.41	345.29	0.00	0.00	0.00
3,700.00	7.45	305.40	3,672.97	245.16	-344.97	356.20	0.00	0.00	0.00
3,800.00	7.45	305.40	3,772.13	252.67	-355.54	367.11	0.00	0.00	0.00
3,900.00	7.45	305.40	3,871.28	260.18	-366.11	378.03	0.00	0.00	0.00
4,000.00	7.45	305.40	3,970.44	267.69	-376.68	388.94	0.00	0.00	0.00
4,100.00	7.45	305.40	4,069.60	275.20	-387.25	399.85	0.00	0.00	0.00
4,200.00	7.45	305.40	4,168.75	282.72	-397.82	410.76	0.00	0.00	0.00
4,300.00	7.45	305.40	4,267.91	290.23	-408.39	421.68	0.00	0.00	0.00
4,400.00	7.45	305.40	4,367.06	297.74	-418.96	432.59	0.00	0.00	0.00
4,500.00	7.45	305.40	4,466.22	305.25	-429.53	443.50	0.00	0.00	0.00
4,600.00	7.45	305.40	4,565.37	312.76	-440.10	454.42	0.00	0.00	0.00

Hewlett-Packard

Planning Report

Database:	EDM 5000.14 Single User Db	Local Co-ordinate Reference:	Well BOST FARM 4N-11B-L
Company:	SRC ENERGY	TVD Reference:	RKB = 20' @ 4898.00usft (PD 462)
Project:	WELD COUNTY (NAD83, TRUE NORTH)	MD Reference:	RKB = 20' @ 4898.00usft (PD 462)
Site:	5N-66W-07 BOST FARM 5-7 PAD	North Reference:	True
Well:	BOST FARM 4N-11B-L	Survey Calculation Method:	Minimum Curvature
Wellbore:	Wellbore #1		
Design:	Design #1		

Planned Survey									
Measured Depth (usft)	Inclination (°)	Azimuth (°)	Vertical Depth (usft)	+N/-S (usft)	+E/-W (usft)	Vertical Section (usft)	Dogleg Rate (°/100usft)	Build Rate (°/100usft)	Turn Rate (°/100usft)
4,700.00	7.45	305.40	4,664.53	320.27	-450.66	465.33	0.00	0.00	0.00
4,800.00	7.45	305.40	4,763.69	327.78	-461.23	476.24	0.00	0.00	0.00
4,900.00	7.45	305.40	4,862.84	335.29	-471.80	487.15	0.00	0.00	0.00
5,000.00	7.45	305.40	4,962.00	342.80	-482.37	498.07	0.00	0.00	0.00
5,100.00	7.45	305.40	5,061.15	350.31	-492.94	508.98	0.00	0.00	0.00
5,200.00	7.45	305.40	5,160.31	357.83	-503.51	519.89	0.00	0.00	0.00
5,300.00	7.45	305.40	5,259.47	365.34	-514.08	530.81	0.00	0.00	0.00
5,400.00	7.45	305.40	5,358.62	372.85	-524.65	541.72	0.00	0.00	0.00
5,500.00	7.45	305.40	5,457.78	380.36	-535.22	552.63	0.00	0.00	0.00
5,600.00	7.45	305.40	5,556.93	387.87	-545.79	563.54	0.00	0.00	0.00
5,700.00	7.45	305.40	5,656.09	395.38	-556.35	574.46	0.00	0.00	0.00
5,800.00	7.45	305.40	5,755.24	402.89	-566.92	585.37	0.00	0.00	0.00
5,900.00	7.45	305.40	5,854.40	410.40	-577.49	596.28	0.00	0.00	0.00
6,000.00	7.45	305.40	5,953.56	417.91	-588.06	607.20	0.00	0.00	0.00
6,100.00	7.45	305.40	6,052.71	425.42	-598.63	618.11	0.00	0.00	0.00
6,200.00	7.45	305.40	6,151.87	432.94	-609.20	629.02	0.00	0.00	0.00
6,300.00	7.45	305.40	6,251.02	440.45	-619.77	639.94	0.00	0.00	0.00
6,400.00	7.45	305.40	6,350.18	447.96	-630.34	650.85	0.00	0.00	0.00
6,445.63	7.45	305.40	6,395.42	451.39	-635.16	655.83	0.00	0.00	0.00
KOP @ 6445.63ft :: DLS = 9°/100'									
6,450.00	7.77	303.71	6,399.76	451.71	-635.64	656.32	9.00	7.41	-38.60
6,500.00	11.78	291.38	6,449.03	455.45	-643.21	664.06	9.00	8.01	-24.67
6,550.00	16.05	285.38	6,497.55	459.15	-654.63	675.64	9.00	8.54	-12.00
6,600.00	20.42	281.87	6,545.03	462.78	-669.84	691.00	9.00	8.73	-7.02
6,650.00	24.83	279.56	6,591.17	466.32	-688.73	710.05	9.00	8.82	-4.62
6,700.00	29.27	277.91	6,635.69	469.74	-711.20	732.65	9.00	8.88	-3.29
6,750.00	33.72	276.67	6,678.32	473.04	-737.10	758.68	9.00	8.91	-2.49
6,800.00	38.18	275.68	6,718.78	476.18	-766.28	787.97	9.00	8.93	-1.97
6,850.00	42.65	274.88	6,756.84	479.16	-798.55	820.35	9.00	8.94	-1.61
6,900.00	47.13	274.20	6,792.26	481.94	-833.72	855.61	9.00	8.95	-1.36
6,950.00	51.60	273.61	6,824.81	484.51	-871.56	893.53	9.00	8.96	-1.18
7,000.00	56.08	273.09	6,854.31	486.86	-911.85	933.89	9.00	8.96	-1.04
7,050.00	60.57	272.62	6,880.55	488.98	-954.34	976.43	9.00	8.96	-0.94
7,100.00	65.05	272.19	6,903.40	490.84	-998.77	1,020.89	9.00	8.97	-0.86
7,150.00	69.53	271.79	6,922.69	492.44	-1,044.85	1,067.00	9.00	8.97	-0.80
7,200.00	74.02	271.42	6,938.33	493.77	-1,092.31	1,114.47	9.00	8.97	-0.75
7,250.00	78.51	271.06	6,950.20	494.82	-1,140.86	1,163.01	9.00	8.97	-0.72
7,300.00	82.99	270.71	6,958.23	495.58	-1,190.19	1,212.33	9.00	8.97	-0.70
7,350.00	87.48	270.37	6,962.38	496.05	-1,240.00	1,262.11	9.00	8.97	-0.68
7,379.04	90.09	270.17	6,963.00	496.18	-1,269.03	1,291.11	9.00	8.97	-0.68
End Build @ 7379.04ft - 5 1/2"									
7,400.00	90.09	270.17	6,962.97	496.25	-1,289.99	1,312.05	0.00	0.00	0.00
7,500.00	90.09	270.17	6,962.81	496.55	-1,389.99	1,411.95	0.00	0.00	0.00
7,600.00	90.09	270.17	6,962.66	496.86	-1,489.99	1,511.85	0.00	0.00	0.00
7,700.00	90.09	270.17	6,962.51	497.16	-1,589.99	1,611.75	0.00	0.00	0.00
7,800.00	90.09	270.17	6,962.35	497.46	-1,689.99	1,711.66	0.00	0.00	0.00
7,900.00	90.09	270.17	6,962.20	497.77	-1,789.99	1,811.56	0.00	0.00	0.00
8,000.00	90.09	270.17	6,962.05	498.07	-1,889.99	1,911.46	0.00	0.00	0.00
8,100.00	90.09	270.17	6,961.90	498.37	-1,989.99	2,011.36	0.00	0.00	0.00
8,200.00	90.09	270.17	6,961.74	498.68	-2,089.99	2,111.26	0.00	0.00	0.00
8,300.00	90.09	270.17	6,961.59	498.98	-2,189.99	2,211.16	0.00	0.00	0.00
8,400.00	90.09	270.17	6,961.44	499.28	-2,289.99	2,311.06	0.00	0.00	0.00
8,500.00	90.09	270.17	6,961.29	499.59	-2,389.99	2,410.97	0.00	0.00	0.00
8,600.00	90.09	270.17	6,961.13	499.89	-2,489.99	2,510.87	0.00	0.00	0.00

Hewlett-Packard

Planning Report

Database:	EDM 5000.14 Single User Db	Local Co-ordinate Reference:	Well BOST FARM 4N-11B-L
Company:	SRC ENERGY	TVD Reference:	RKB = 20' @ 4898.00usft (PD 462)
Project:	WELD COUNTY (NAD83, TRUE NORTH)	MD Reference:	RKB = 20' @ 4898.00usft (PD 462)
Site:	5N-66W-07 BOST FARM 5-7 PAD	North Reference:	True
Well:	BOST FARM 4N-11B-L	Survey Calculation Method:	Minimum Curvature
Wellbore:	Wellbore #1		
Design:	Design #1		

Planned Survey										
Measured Depth (usft)	Inclination (°)	Azimuth (°)	Vertical Depth (usft)	+N/-S (usft)	+E/-W (usft)	Vertical Section (usft)	Dogleg Rate (°/100usft)	Build Rate (°/100usft)	Turn Rate (°/100usft)	
8,700.00	90.09	270.17	6,960.98	500.19	-2,589.98	2,610.77	0.00	0.00	0.00	
8,800.00	90.09	270.17	6,960.83	500.50	-2,689.98	2,710.67	0.00	0.00	0.00	
8,900.00	90.09	270.17	6,960.68	500.80	-2,789.98	2,810.57	0.00	0.00	0.00	
9,000.00	90.09	270.17	6,960.52	501.10	-2,889.98	2,910.47	0.00	0.00	0.00	
9,100.00	90.09	270.17	6,960.37	501.41	-2,989.98	3,010.38	0.00	0.00	0.00	
9,200.00	90.09	270.17	6,960.22	501.71	-3,089.98	3,110.28	0.00	0.00	0.00	
9,300.00	90.09	270.17	6,960.06	502.01	-3,189.98	3,210.18	0.00	0.00	0.00	
9,400.00	90.09	270.17	6,959.91	502.32	-3,289.98	3,310.08	0.00	0.00	0.00	
9,500.00	90.09	270.17	6,959.76	502.62	-3,389.98	3,409.98	0.00	0.00	0.00	
9,600.00	90.09	270.17	6,959.61	502.92	-3,489.98	3,509.88	0.00	0.00	0.00	
9,700.00	90.09	270.17	6,959.45	503.23	-3,589.98	3,609.79	0.00	0.00	0.00	
9,800.00	90.09	270.17	6,959.30	503.53	-3,689.98	3,709.69	0.00	0.00	0.00	
9,900.00	90.09	270.17	6,959.15	503.83	-3,789.98	3,809.59	0.00	0.00	0.00	
10,000.00	90.09	270.17	6,959.00	504.14	-3,889.98	3,909.49	0.00	0.00	0.00	
10,100.00	90.09	270.17	6,958.84	504.44	-3,989.98	4,009.39	0.00	0.00	0.00	
10,200.00	90.09	270.17	6,958.69	504.75	-4,089.98	4,109.29	0.00	0.00	0.00	
10,300.00	90.09	270.17	6,958.54	505.05	-4,189.98	4,209.19	0.00	0.00	0.00	
10,400.00	90.09	270.17	6,958.39	505.35	-4,289.97	4,309.10	0.00	0.00	0.00	
10,500.00	90.09	270.17	6,958.23	505.66	-4,389.97	4,409.00	0.00	0.00	0.00	
10,600.00	90.09	270.17	6,958.08	505.96	-4,489.97	4,508.90	0.00	0.00	0.00	
10,700.00	90.09	270.17	6,957.93	506.26	-4,589.97	4,608.80	0.00	0.00	0.00	
10,800.00	90.09	270.17	6,957.77	506.57	-4,689.97	4,708.70	0.00	0.00	0.00	
10,900.00	90.09	270.17	6,957.62	506.87	-4,789.97	4,808.60	0.00	0.00	0.00	
11,000.00	90.09	270.17	6,957.47	507.17	-4,889.97	4,908.51	0.00	0.00	0.00	
11,100.00	90.09	270.17	6,957.32	507.48	-4,989.97	5,008.41	0.00	0.00	0.00	
11,200.00	90.09	270.17	6,957.16	507.78	-5,089.97	5,108.31	0.00	0.00	0.00	
11,300.00	90.09	270.17	6,957.01	508.08	-5,189.97	5,208.21	0.00	0.00	0.00	
11,400.00	90.09	270.17	6,956.86	508.39	-5,289.97	5,308.11	0.00	0.00	0.00	
11,500.00	90.09	270.17	6,956.71	508.69	-5,389.97	5,408.01	0.00	0.00	0.00	
11,600.00	90.09	270.17	6,956.55	508.99	-5,489.97	5,507.91	0.00	0.00	0.00	
11,700.00	90.09	270.17	6,956.40	509.30	-5,589.97	5,607.82	0.00	0.00	0.00	
11,800.00	90.09	270.17	6,956.25	509.60	-5,689.97	5,707.72	0.00	0.00	0.00	
11,900.00	90.09	270.17	6,956.10	509.90	-5,789.97	5,807.62	0.00	0.00	0.00	
12,000.00	90.09	270.17	6,955.94	510.21	-5,889.97	5,907.52	0.00	0.00	0.00	
12,100.00	90.09	270.17	6,955.79	510.51	-5,989.97	6,007.42	0.00	0.00	0.00	
12,200.00	90.09	270.17	6,955.64	510.81	-6,089.96	6,107.32	0.00	0.00	0.00	
12,300.00	90.09	270.17	6,955.48	511.12	-6,189.96	6,207.23	0.00	0.00	0.00	
12,400.00	90.09	270.17	6,955.33	511.42	-6,289.96	6,307.13	0.00	0.00	0.00	
12,500.00	90.09	270.17	6,955.18	511.73	-6,389.96	6,407.03	0.00	0.00	0.00	
12,600.00	90.09	270.17	6,955.03	512.03	-6,489.96	6,506.93	0.00	0.00	0.00	
12,700.00	90.09	270.17	6,954.87	512.33	-6,589.96	6,606.83	0.00	0.00	0.00	
12,800.00	90.09	270.17	6,954.72	512.64	-6,689.96	6,706.73	0.00	0.00	0.00	
12,900.00	90.09	270.17	6,954.57	512.94	-6,789.96	6,806.64	0.00	0.00	0.00	
13,000.00	90.09	270.17	6,954.42	513.24	-6,889.96	6,906.54	0.00	0.00	0.00	
13,100.00	90.09	270.17	6,954.26	513.55	-6,989.96	7,006.44	0.00	0.00	0.00	
13,200.00	90.09	270.17	6,954.11	513.85	-7,089.96	7,106.34	0.00	0.00	0.00	
13,300.00	90.09	270.17	6,953.96	514.15	-7,189.96	7,206.24	0.00	0.00	0.00	
13,400.00	90.09	270.17	6,953.81	514.46	-7,289.96	7,306.14	0.00	0.00	0.00	
13,500.00	90.09	270.17	6,953.65	514.76	-7,389.96	7,406.04	0.00	0.00	0.00	
13,600.00	90.09	270.17	6,953.50	515.06	-7,489.96	7,505.95	0.00	0.00	0.00	
13,700.00	90.09	270.17	6,953.35	515.37	-7,589.96	7,605.85	0.00	0.00	0.00	
13,800.00	90.09	270.17	6,953.19	515.67	-7,689.96	7,705.75	0.00	0.00	0.00	
13,900.00	90.09	270.17	6,953.04	515.97	-7,789.95	7,805.65	0.00	0.00	0.00	
14,000.00	90.09	270.17	6,952.89	516.28	-7,889.95	7,905.55	0.00	0.00	0.00	

Hewlett-Packard

Planning Report

Database:	EDM 5000.14 Single User Db	Local Co-ordinate Reference:	Well BOST FARM 4N-11B-L
Company:	SRC ENERGY	TVD Reference:	RKB = 20' @ 4898.00usft (PD 462)
Project:	WELD COUNTY (NAD83, TRUE NORTH)	MD Reference:	RKB = 20' @ 4898.00usft (PD 462)
Site:	5N-66W-07 BOST FARM 5-7 PAD	North Reference:	True
Well:	BOST FARM 4N-11B-L	Survey Calculation Method:	Minimum Curvature
Wellbore:	Wellbore #1		
Design:	Design #1		

Planned Survey										
Measured Depth (usft)	Inclination (°)	Azimuth (°)	Vertical Depth (usft)	+N/-S (usft)	+E/-W (usft)	Vertical Section (usft)	Dogleg Rate (°/100usft)	Build Rate (°/100usft)	Turn Rate (°/100usft)	
14,100.00	90.09	270.17	6,952.74	516.58	-7,989.95	8,005.45	0.00	0.00	0.00	
14,200.00	90.09	270.17	6,952.58	516.88	-8,089.95	8,105.36	0.00	0.00	0.00	
14,300.00	90.09	270.17	6,952.43	517.19	-8,189.95	8,205.26	0.00	0.00	0.00	
14,400.00	90.09	270.17	6,952.28	517.49	-8,289.95	8,305.16	0.00	0.00	0.00	
14,500.00	90.09	270.17	6,952.13	517.79	-8,389.95	8,405.06	0.00	0.00	0.00	
14,600.00	90.09	270.17	6,951.97	518.10	-8,489.95	8,504.96	0.00	0.00	0.00	
14,700.00	90.09	270.17	6,951.82	518.40	-8,589.95	8,604.86	0.00	0.00	0.00	
14,800.00	90.09	270.17	6,951.67	518.71	-8,689.95	8,704.76	0.00	0.00	0.00	
14,900.00	90.09	270.17	6,951.52	519.01	-8,789.95	8,804.67	0.00	0.00	0.00	
15,000.00	90.09	270.17	6,951.36	519.31	-8,889.95	8,904.57	0.00	0.00	0.00	
15,100.00	90.09	270.17	6,951.21	519.62	-8,989.95	9,004.47	0.00	0.00	0.00	
15,200.00	90.09	270.17	6,951.06	519.92	-9,089.95	9,104.37	0.00	0.00	0.00	
15,300.00	90.09	270.17	6,950.90	520.22	-9,189.95	9,204.27	0.00	0.00	0.00	
15,400.00	90.09	270.17	6,950.75	520.53	-9,289.95	9,304.17	0.00	0.00	0.00	
15,500.00	90.09	270.17	6,950.60	520.83	-9,389.95	9,404.08	0.00	0.00	0.00	
15,600.00	90.09	270.17	6,950.45	521.13	-9,489.95	9,503.98	0.00	0.00	0.00	
15,700.00	90.09	270.17	6,950.29	521.44	-9,589.94	9,603.88	0.00	0.00	0.00	
15,800.00	90.09	270.17	6,950.14	521.74	-9,689.94	9,703.78	0.00	0.00	0.00	
15,900.00	90.09	270.17	6,949.99	522.04	-9,789.94	9,803.68	0.00	0.00	0.00	
16,000.00	90.09	270.17	6,949.84	522.35	-9,889.94	9,903.58	0.00	0.00	0.00	
16,100.00	90.09	270.17	6,949.68	522.65	-9,989.94	10,003.49	0.00	0.00	0.00	
16,200.00	90.09	270.17	6,949.53	522.95	-10,089.94	10,103.39	0.00	0.00	0.00	
16,300.00	90.09	270.17	6,949.38	523.26	-10,189.94	10,203.29	0.00	0.00	0.00	
16,400.00	90.09	270.17	6,949.23	523.56	-10,289.94	10,303.19	0.00	0.00	0.00	
16,500.00	90.09	270.17	6,949.07	523.86	-10,389.94	10,403.09	0.00	0.00	0.00	
16,600.00	90.09	270.17	6,948.92	524.17	-10,489.94	10,502.99	0.00	0.00	0.00	
16,700.00	90.09	270.17	6,948.77	524.47	-10,589.94	10,602.89	0.00	0.00	0.00	
16,800.00	90.09	270.17	6,948.62	524.77	-10,689.94	10,702.80	0.00	0.00	0.00	
16,900.00	90.09	270.17	6,948.46	525.08	-10,789.94	10,802.70	0.00	0.00	0.00	
17,000.00	90.09	270.17	6,948.31	525.38	-10,889.94	10,902.60	0.00	0.00	0.00	
17,100.00	90.09	270.17	6,948.16	525.68	-10,989.94	11,002.50	0.00	0.00	0.00	
17,202.77	90.09	270.17	6,948.00	526.00	-11,092.70	11,105.17	0.00	0.00	0.00	
TD Well @ 17202.77ft										

Casing Points					
Measured Depth (usft)	Vertical Depth (usft)	Name	Casing Diameter (")	Hole Diameter (")	
1,760.66	1,750.00	9 5/8"	9-5/8	13-1/2	
7,379.04	6,963.00	5 1/2"	5-1/2	8-1/2	

Plan Annotations					
Measured Depth (usft)	Vertical Depth (usft)	Local Coordinates		Comment	
		+N/-S (usft)	+E/-W (usft)		
250.00	250.00	0.00	0.00	Begin Nudge @ 250.00ft	
622.50	621.45	14.01	-19.71	End Nudge @ 622.50ft	
6,445.63	6,395.42	451.39	-635.16	KOP @ 6445.63ft :: DLS = 9°/100'	
7,379.04	6,963.00	496.18	-1,269.04	End Build @ 7379.04ft	
17,202.77	6,948.00	526.00	-11,092.70	TD Well @ 17202.77ft	