



6899 Pecos Street, Unit C
Denver, Colorado 80221

CLIENT: Kerr-McGee Oil & Gas Onshore, LP

LOGGED BY: Eric Siegel

PROJECT MANAGER: Robert Cornez

DRILLING CONTRACTOR: Tasman Geosciences, Inc.

DRILLING EQUIPMENT: AMS Powerprobe 9300-SK

DRILL BIT SIZE (INCHES): 2.375"

DATE STARTED - COMPLETED: 11/10/2014

TOTAL WELL DEPTH (FT. BGS): 8

DEPTH TO WATER (FT. BGS): 4.5

Howard 25C-22HZ

BORING / WELL ID: BH01

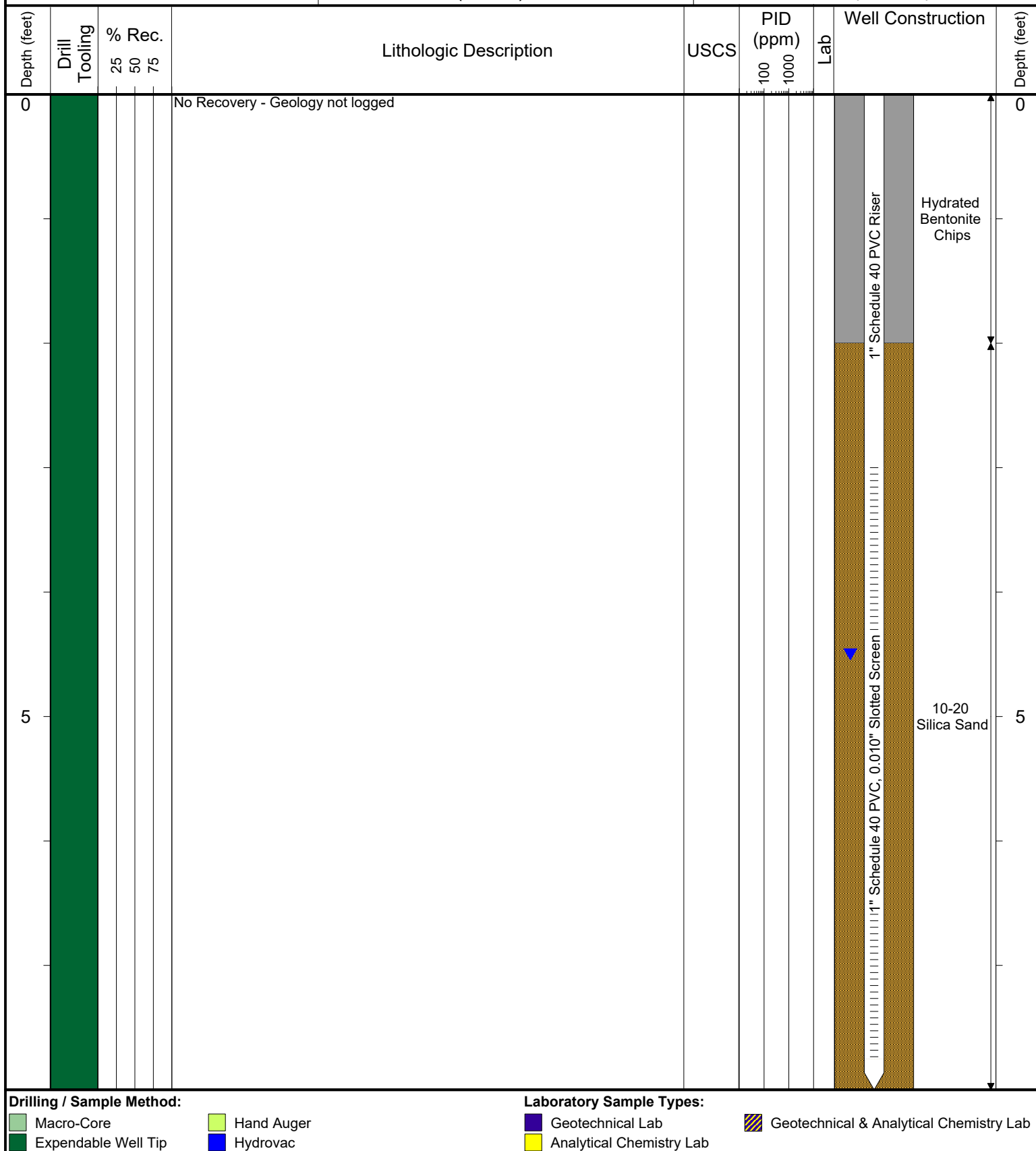
COMPLETION: Flush Mount

NORTHING (CO STATE PLANE): 40.017751

EASTING (CO STATE PLANE): -104.870314

CASING ELEVATION (FT. AMSL): 5051.29

GROUND ELEVATION (FT. AMSL): 5051.42





6899 Pecos Street, Unit C
Denver, Colorado 80221

CLIENT: Kerr-McGee Oil & Gas Onshore, LP

LOGGED BY: Eric Siegel

PROJECT MANAGER: Robert Cornez

DRILLING CONTRACTOR: Tasman Geosciences, Inc.

DRILLING EQUIPMENT: AMS Powerprobe 9300-SK

DRILL BIT SIZE (INCHES): 2.375"

DATE STARTED - COMPLETED: 11/10/2014

TOTAL WELL DEPTH (FT. BGS): 8

DEPTH TO WATER (FT. BGS): 5.8

Howard 25C-22HZ

BORING / WELL ID: BH02

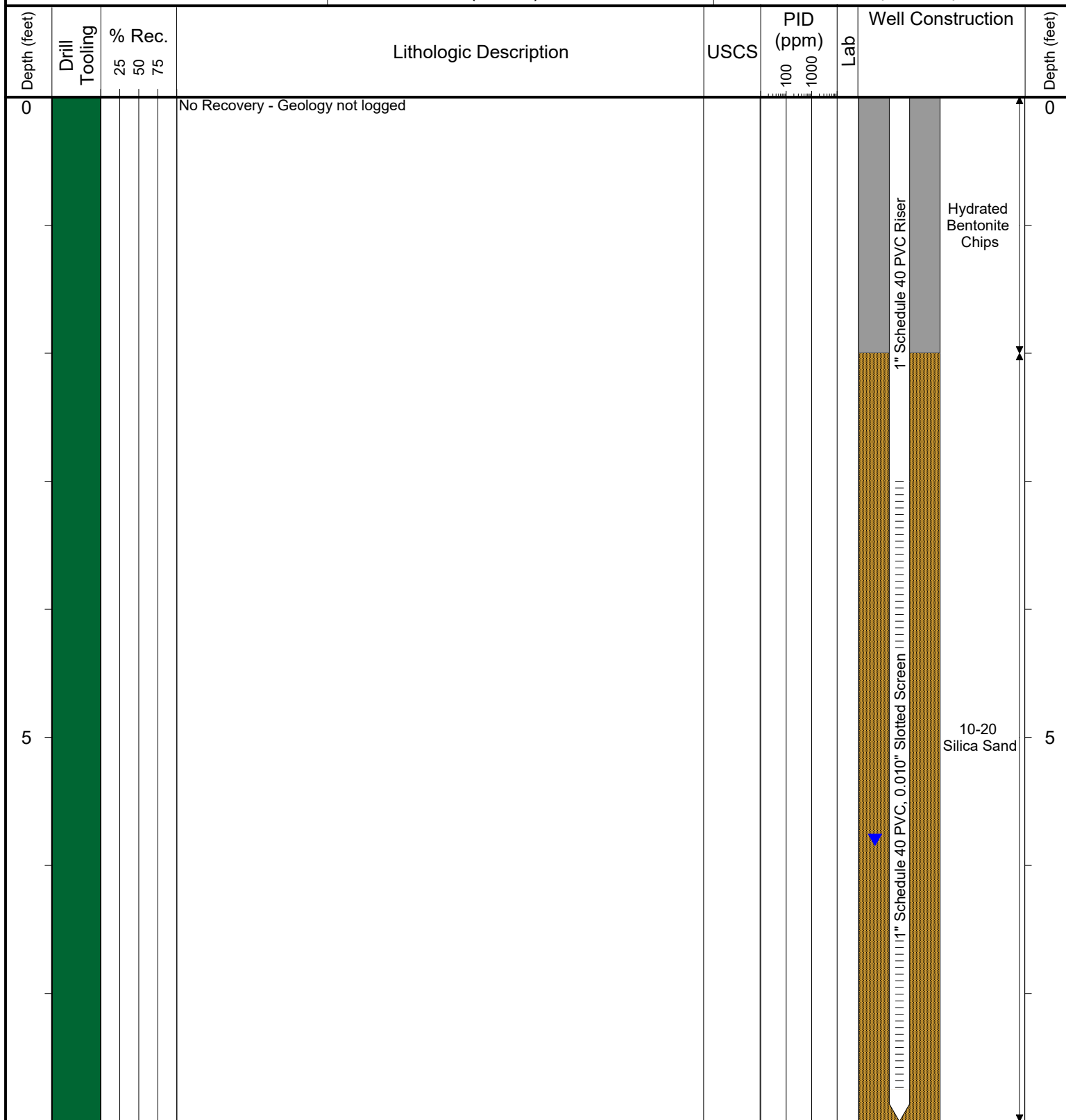
COMPLETION: Flush Mount

NORTHING (CO STATE PLANE): 40.017832

EASTING (CO STATE PLANE): -104.870234

CASING ELEVATION (FT. AMSL): 5054.06

GROUND ELEVATION (FT. AMSL): 5054.15



Drilling / Sample Method:

Macro-Core

Expendable Well Tip

Hand Auger

Hydrovac

Laboratory Sample Types:

Geotechnical Lab

Analytical Chemistry Lab

Geotechnical & Analytical Chemistry Lab



6899 Pecos Street, Unit C
Denver, Colorado 80221

CLIENT: Kerr-McGee Oil & Gas Onshore, LP

LOGGED BY: Eric Siegel

PROJECT MANAGER: Robert Cornez

DRILLING CONTRACTOR: Tasman Geosciences, Inc.

DRILLING EQUIPMENT: AMS Powerprobe 9300-SK

DRILL BIT SIZE (INCHES): 2.375"

DATE STARTED - COMPLETED: 11/10/2014

TOTAL WELL DEPTH (FT. BGS): 7.5

DEPTH TO WATER (FT. BGS): 6.2

Howard 25C-22HZ

BORING / WELL ID: BH03

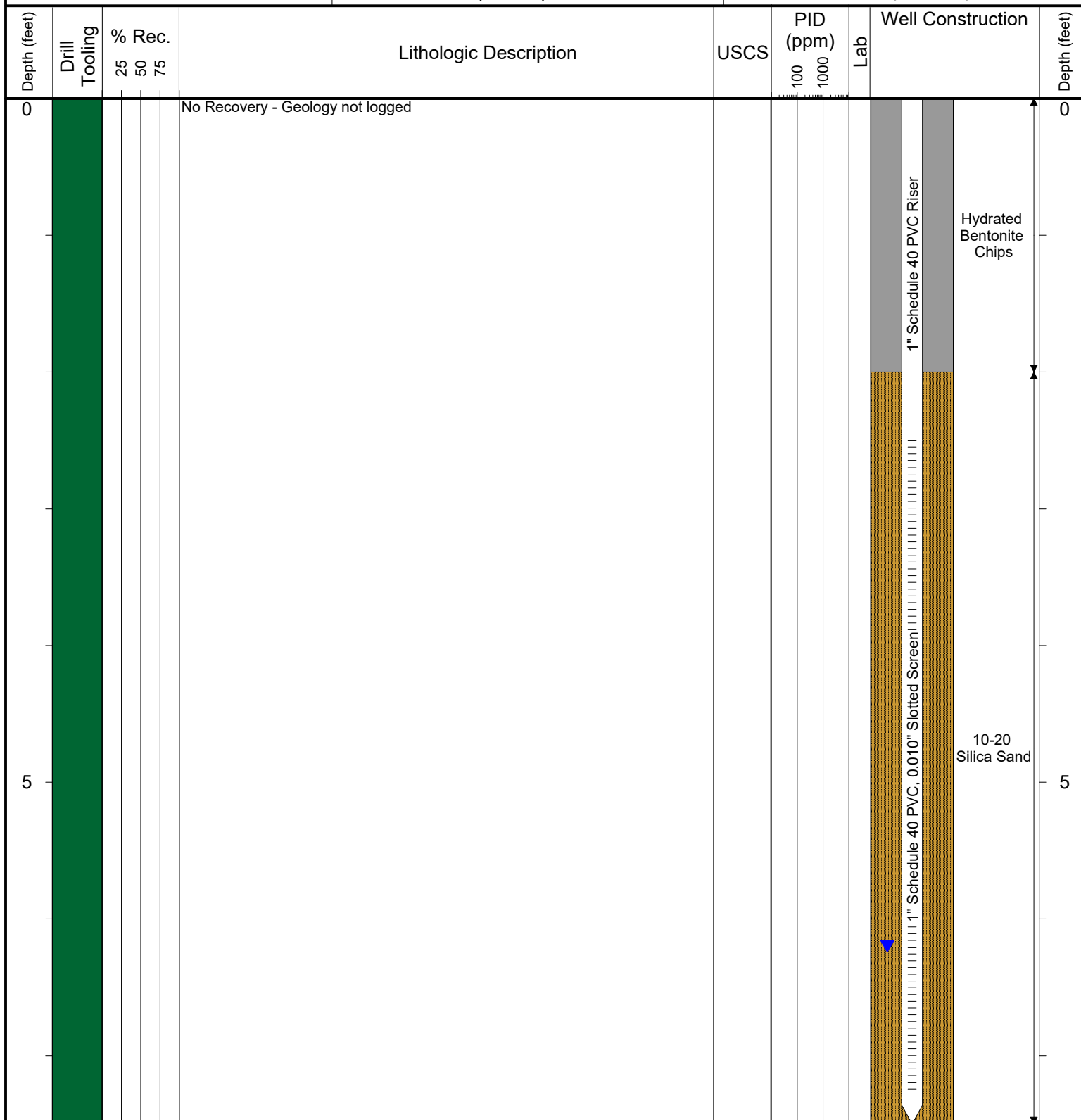
COMPLETION: Flush Mount

NORTHING (CO STATE PLANE): 40.017842

EASTING (CO STATE PLANE): -104.870344

CASING ELEVATION (FT. AMSL): 5051.6

GROUND ELEVATION (FT. AMSL): 5051.73



Drilling / Sample Method:

Macro-Core

Expendable Well Tip

Hand Auger

Hydrovac

Laboratory Sample Types:

Geotechnical Lab

Analytical Chemistry Lab

Geotechnical & Analytical Chemistry Lab



6899 Pecos Street, Unit C
Denver, Colorado 80221

CLIENT: Kerr-McGee Oil & Gas Onshore, LP

LOGGED BY: Tyler Blessing

PROJECT MANAGER: Robert Cornez

DRILLING CONTRACTOR: Tasman Geosciences, Inc.

DRILLING EQUIPMENT: AMS Powerprobe 9300-SK

DRILL BIT SIZE (INCHES): 2.375"

DATE STARTED - COMPLETED: 6/16/2016

TOTAL WELL DEPTH (FT. BGS): 11

DEPTH TO WATER (FT. BGS): 4.1

Howard 25C-22HZ

BORING / WELL ID: BH04

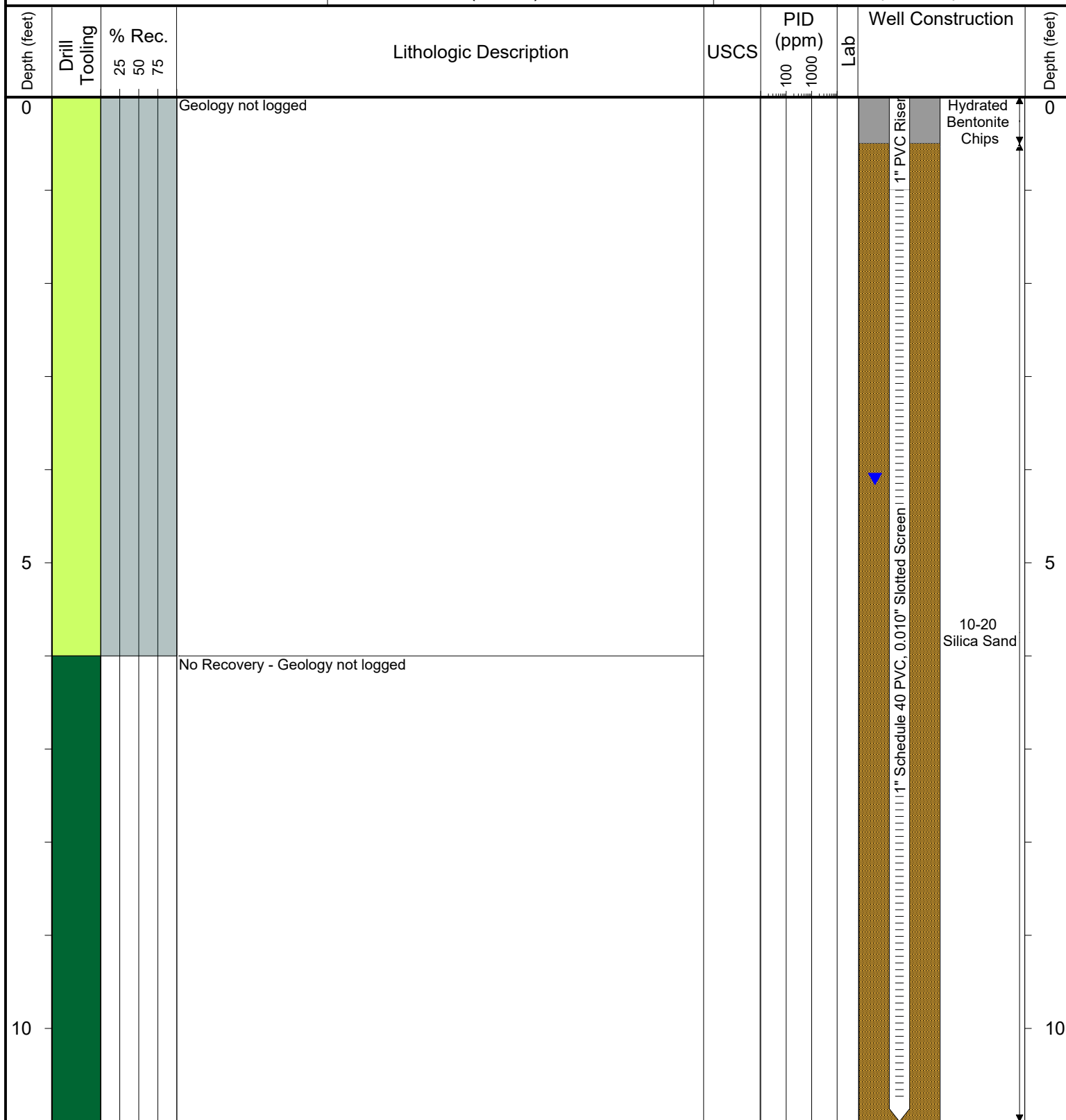
COMPLETION: Flush Mount

NORTHING (CO STATE PLANE): 40.017686

EASTING (CO STATE PLANE): -104.870395

CASING ELEVATION (FT. AMSL): 5050.97

GROUND ELEVATION (FT. AMSL): 5051.27



Drilling / Sample Method:

Macro-Core

Expendable Well Tip

Hand Auger

Hydrovac

Laboratory Sample Types:

Geotechnical Lab

Analytical Chemistry Lab

Geotechnical & Analytical Chemistry Lab



6899 Pecos Street, Unit C
Denver, Colorado 80221

CLIENT: Kerr-McGee Oil & Gas Onshore, LP

LOGGED BY: Tyler Blessing

PROJECT MANAGER: Robert Cornez

DRILLING CONTRACTOR: Tasman Geosciences, Inc.

DRILLING EQUIPMENT: AMS Powerprobe 9300-SK

DRILL BIT SIZE (INCHES): 2.375"

DATE STARTED - COMPLETED: 6/16/2016

TOTAL WELL DEPTH (FT. BGS): 11

DEPTH TO WATER (FT. BGS): 9.6

Howard 25C-22HZ

BORING / WELL ID: BH05

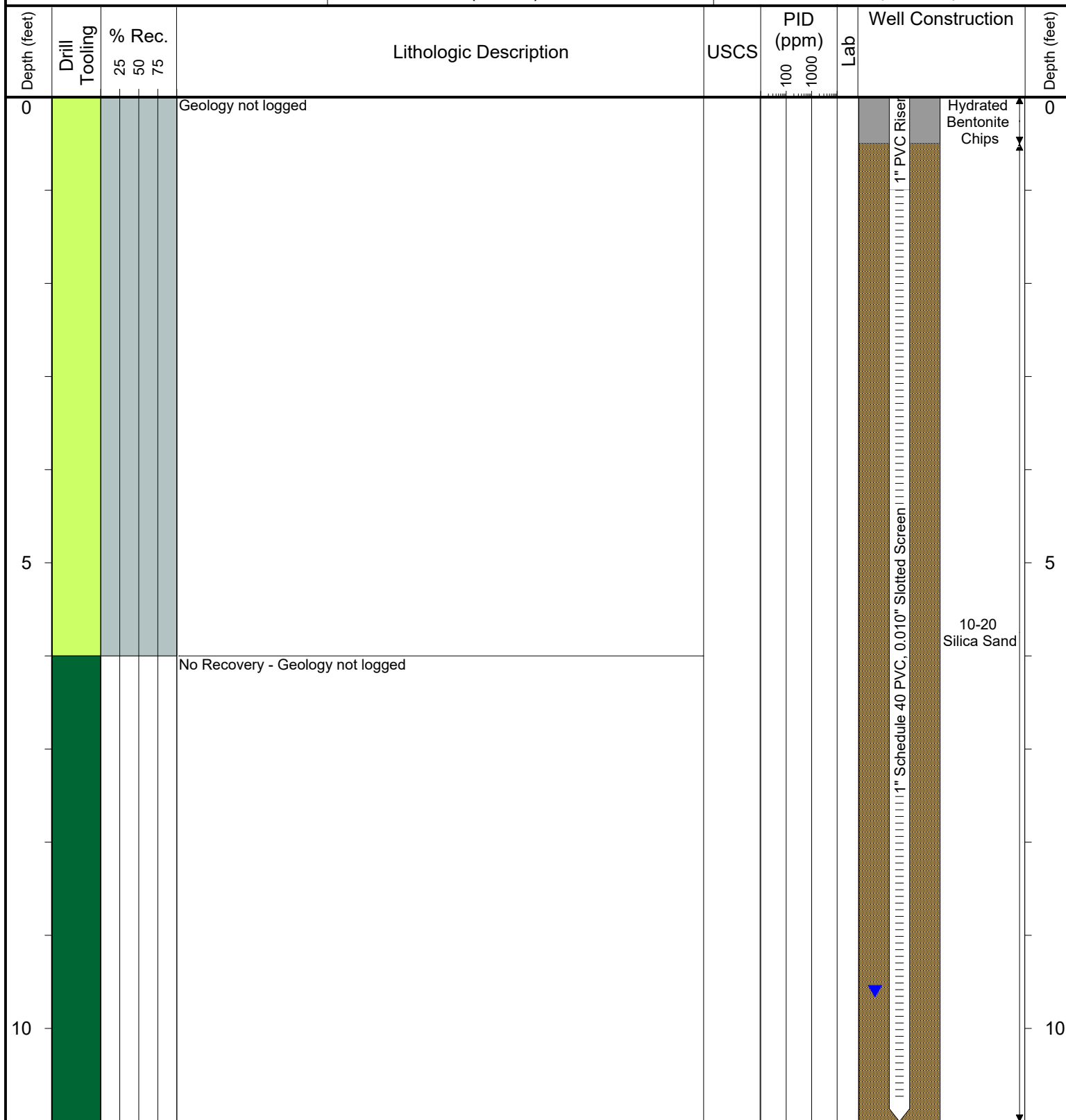
COMPLETION: Flush Mount

NORTHING (CO STATE PLANE): 40.017684

EASTING (CO STATE PLANE): -104.87054

CASING ELEVATION (FT. AMSL): 5049.44

GROUND ELEVATION (FT. AMSL): 5049.7



Drilling / Sample Method:

Macro-Core

Hand Auger

Expendable Well Tip

Hydrovac

Laboratory Sample Types:

Geotechnical Lab

Analytical Chemistry Lab

Geotechnical & Analytical Chemistry Lab



6899 Pecos Street, Unit C
Denver, Colorado 80221

CLIENT: Kerr-McGee Oil & Gas Onshore, LP

LOGGED BY: Tyler Blessing

PROJECT MANAGER: Robert Cornez

DRILLING CONTRACTOR: Tasman Geosciences, Inc.

DRILLING EQUIPMENT: AMS Powerprobe 9300-SK

DRILL BIT SIZE (INCHES): 2.375"

DATE STARTED - COMPLETED: 6/16/2016

TOTAL WELL DEPTH (FT. BGS): 11

DEPTH TO WATER (FT. BGS): 4.6

Howard 25C-22HZ

BORING / WELL ID: BH06

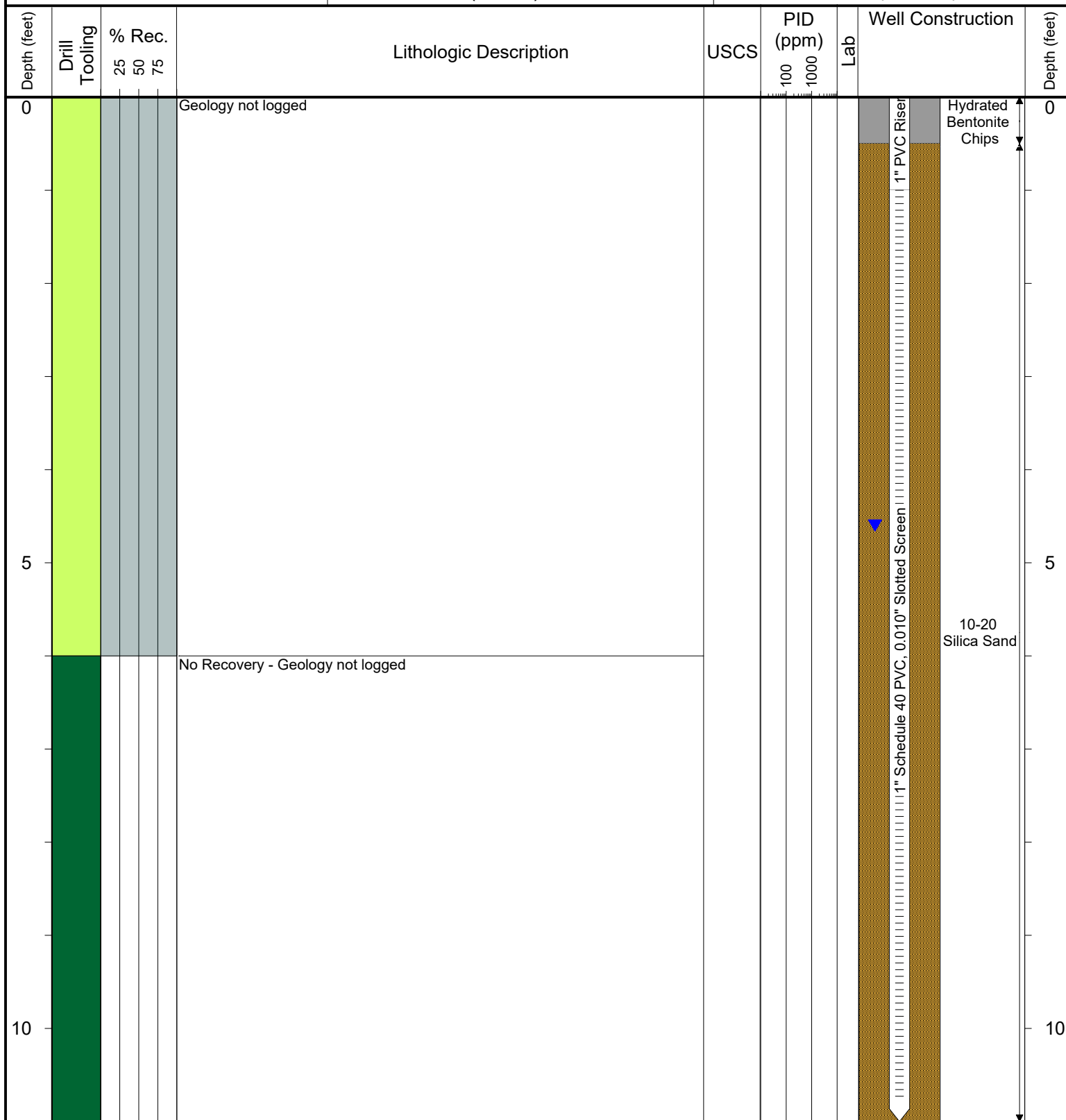
COMPLETION: Flush Mount

NORTHING (CO STATE PLANE): 40.017753

EASTING (CO STATE PLANE): -104.870585

CASING ELEVATION (FT. AMSL): 5048.12

GROUND ELEVATION (FT. AMSL): 5048.44



Drilling / Sample Method:

Macro-Core

Expendable Well Tip

Hand Auger

Hydrovac

Laboratory Sample Types:

Geotechnical Lab

Analytical Chemistry Lab

Geotechnical & Analytical Chemistry Lab



6899 Pecos Street, Unit C
Denver, Colorado 80221

CLIENT: Kerr-McGee Oil & Gas Onshore, LP

LOGGED BY: Tyler Blessing

PROJECT MANAGER: Robert Cornez

DRILLING CONTRACTOR: Tasman Geosciences, Inc.

DRILLING EQUIPMENT: AMS Powerprobe 9300-SK

DRILL BIT SIZE (INCHES): 2.375"

DATE STARTED - COMPLETED: 6/16/2016

TOTAL WELL DEPTH (FT. BGS): 11

DEPTH TO WATER (FT. BGS): 6.1

Howard 25C-22HZ

BORING / WELL ID: BH07 (Destroyed)

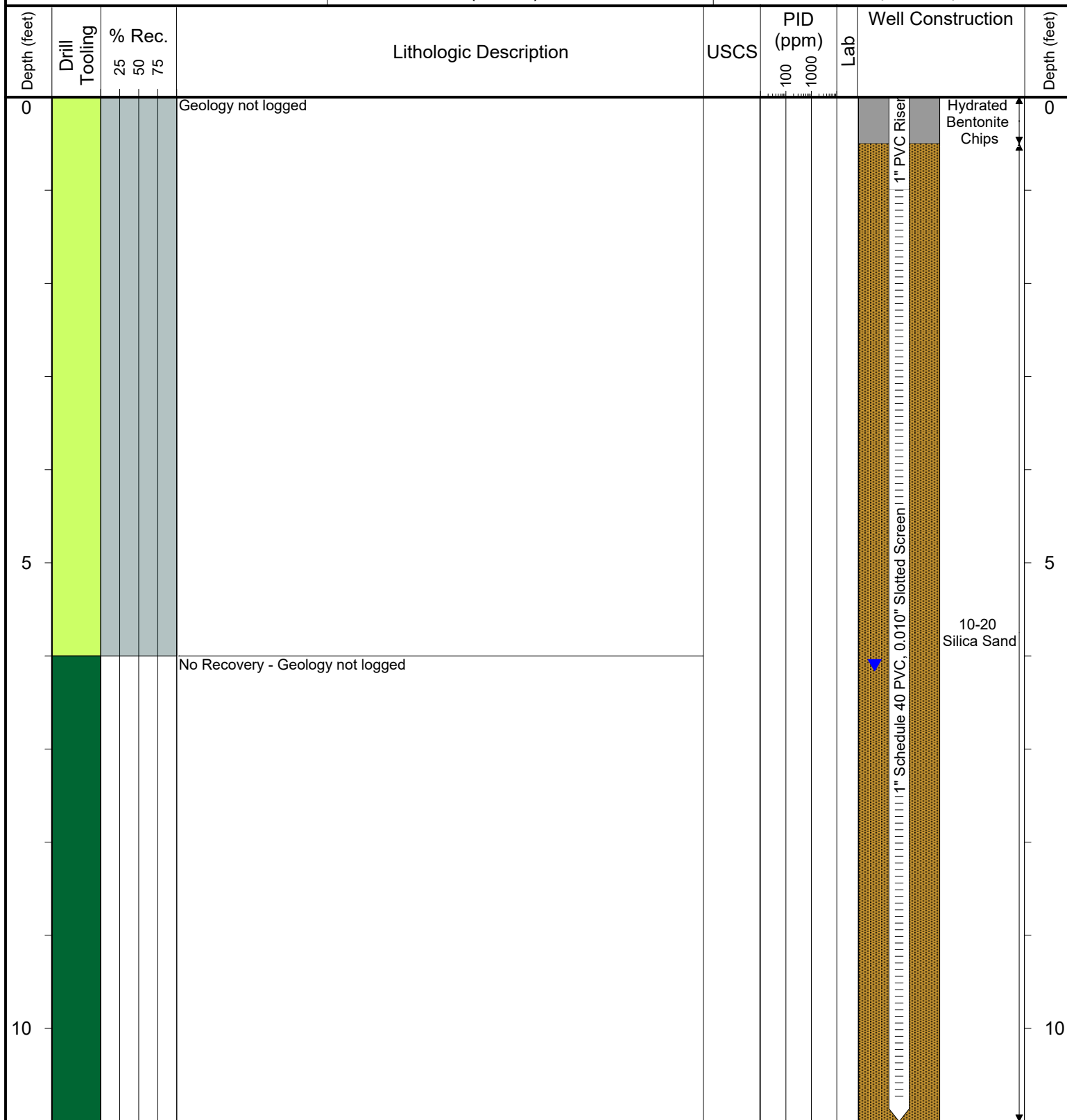
COMPLETION: Flush Mount

NORTHING (CO STATE PLANE): 40.017807

EASTING (CO STATE PLANE): -104.870494

CASING ELEVATION (FT. AMSL): 5049.12

GROUND ELEVATION (FT. AMSL): 5049.6



Drilling / Sample Method:

Macro-Core

Expendable Well Tip

Hand Auger

Hydrovac

Laboratory Sample Types:

Geotechnical Lab

Analytical Chemistry Lab



Geotechnical & Analytical Chemistry Lab



6899 Pecos Street, Unit C
Denver, Colorado 80221

CLIENT: Kerr-McGee Oil & Gas Onshore, LP

LOGGED BY: Eric Siegel, P.G.

PROJECT MANAGER: Robert Cornez

DRILLING CONTRACTOR: Tasman Geosciences, Inc.

DRILLING EQUIPMENT: AMS Powerprobe 9300-SK

DRILL BIT SIZE (INCHES): 2.375"

DATE STARTED - COMPLETED: 3/28/2017

TOTAL WELL DEPTH (FT. BGS): 16

DEPTH TO WATER (FT. BGS): 11

Howard 25C-22HZ

BORING / WELL ID: BH07R

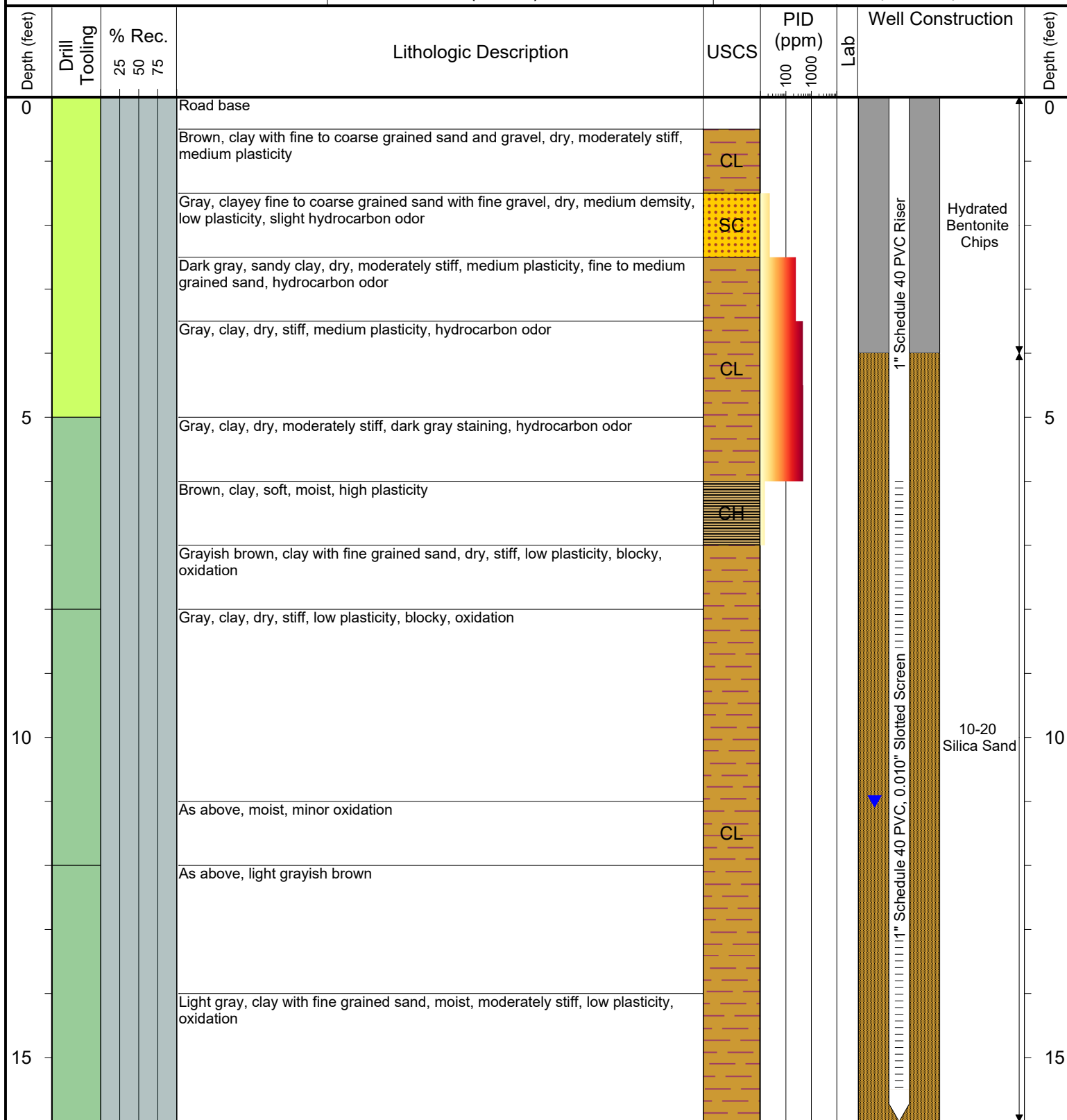
COMPLETION: Flush Mount

NORTHING (CO STATE PLANE): 40.0178066

EASTING (CO STATE PLANE): -104.8705027

CASING ELEVATION (FT. AMSL): 5049.84

GROUND ELEVATION (FT. AMSL): 5049.43



Drilling / Sample Method:

Macro-Core Hand Auger
Expendable Well Tip Hydrovac

Laboratory Sample Types:

Geotechnical Lab Analytical Chemistry Lab
Geotechnical & Analytical Chemistry Lab



6899 Pecos Street, Unit C
Denver, Colorado 80221

CLIENT: Kerr-McGee Oil & Gas Onshore, LP

LOGGED BY: Tyler Blessing

PROJECT MANAGER: Robert Cornez

DRILLING CONTRACTOR: Tasman Geosciences, Inc.

DRILLING EQUIPMENT: AMS Powerprobe 9300-SK

DRILL BIT SIZE (INCHES): 2.375"

DATE STARTED - COMPLETED: 6/16/2016

TOTAL WELL DEPTH (FT. BGS): 11

DEPTH TO WATER (FT. BGS): 7.1

Howard 25C-22HZ

BORING / WELL ID: BH08

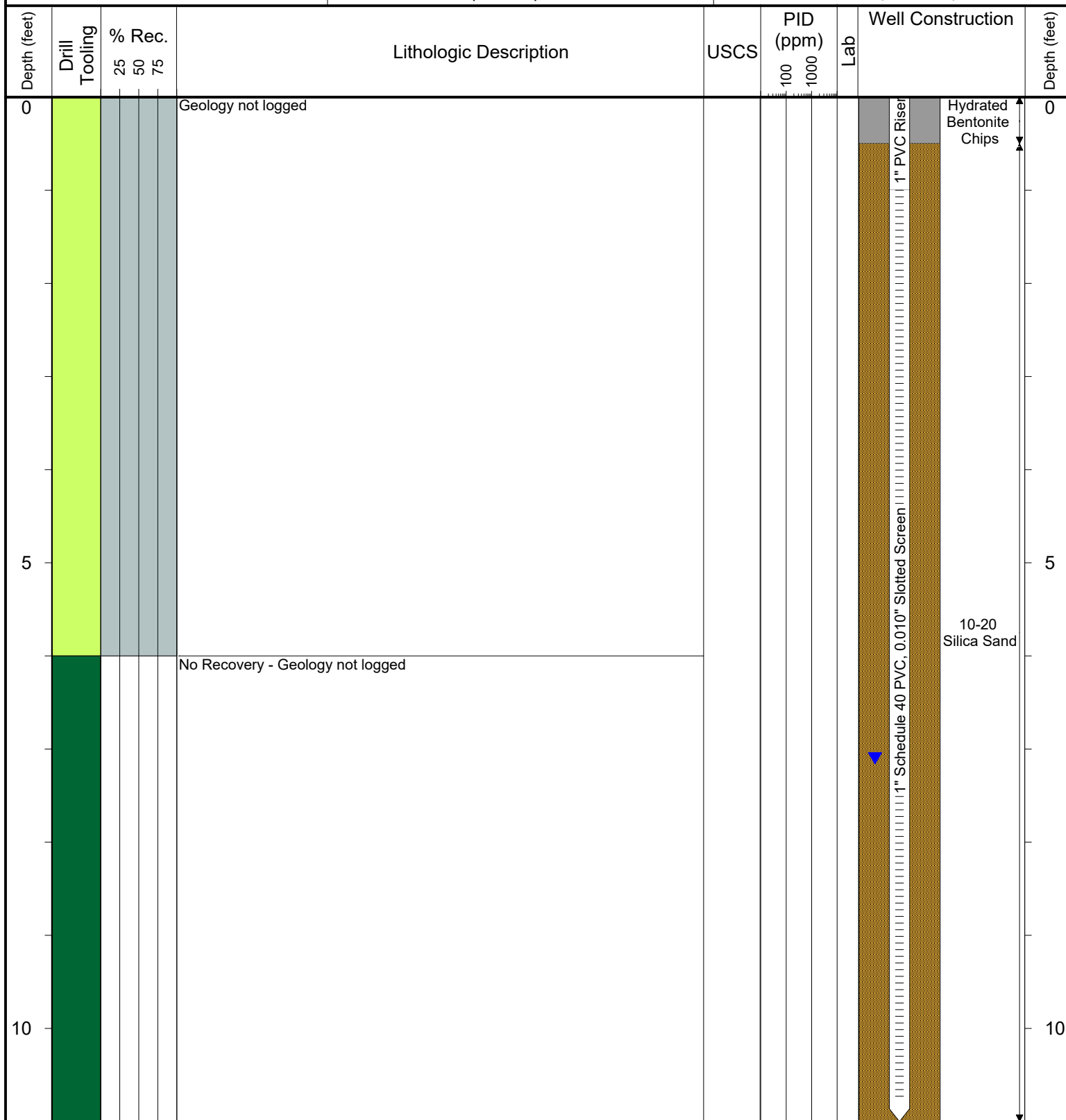
COMPLETION: Stick Up - 1.97'

NORTHING (CO STATE PLANE): 40.017747

EASTING (CO STATE PLANE): -104.870457

CASING ELEVATION (FT. AMSL): 5052.22

GROUND ELEVATION (FT. AMSL): 5050.25



Drilling / Sample Method:

Macro-Core

Expendable Well Tip

Hand Auger

Hydrovac

Laboratory Sample Types:

Geotechnical Lab

Analytical Chemistry Lab

Geotechnical & Analytical Chemistry Lab



6899 Pecos Street, Unit C
Denver, Colorado 80221

CLIENT: Kerr-McGee Oil & Gas Onshore, LP

LOGGED BY: Eric Siegel, P.G.

PROJECT MANAGER: Robert Cornez

DRILLING CONTRACTOR: Tasman Geosciences, Inc.

DRILLING EQUIPMENT: AMS Powerprobe 9300-SK

DRILL BIT SIZE (INCHES): 2.375"

DATE STARTED - COMPLETED: 3/28/2017

TOTAL WELL DEPTH (FT. BGS): 16

DEPTH TO WATER (FT. BGS): 10

Howard 25C-22HZ

BORING / WELL ID: BH09

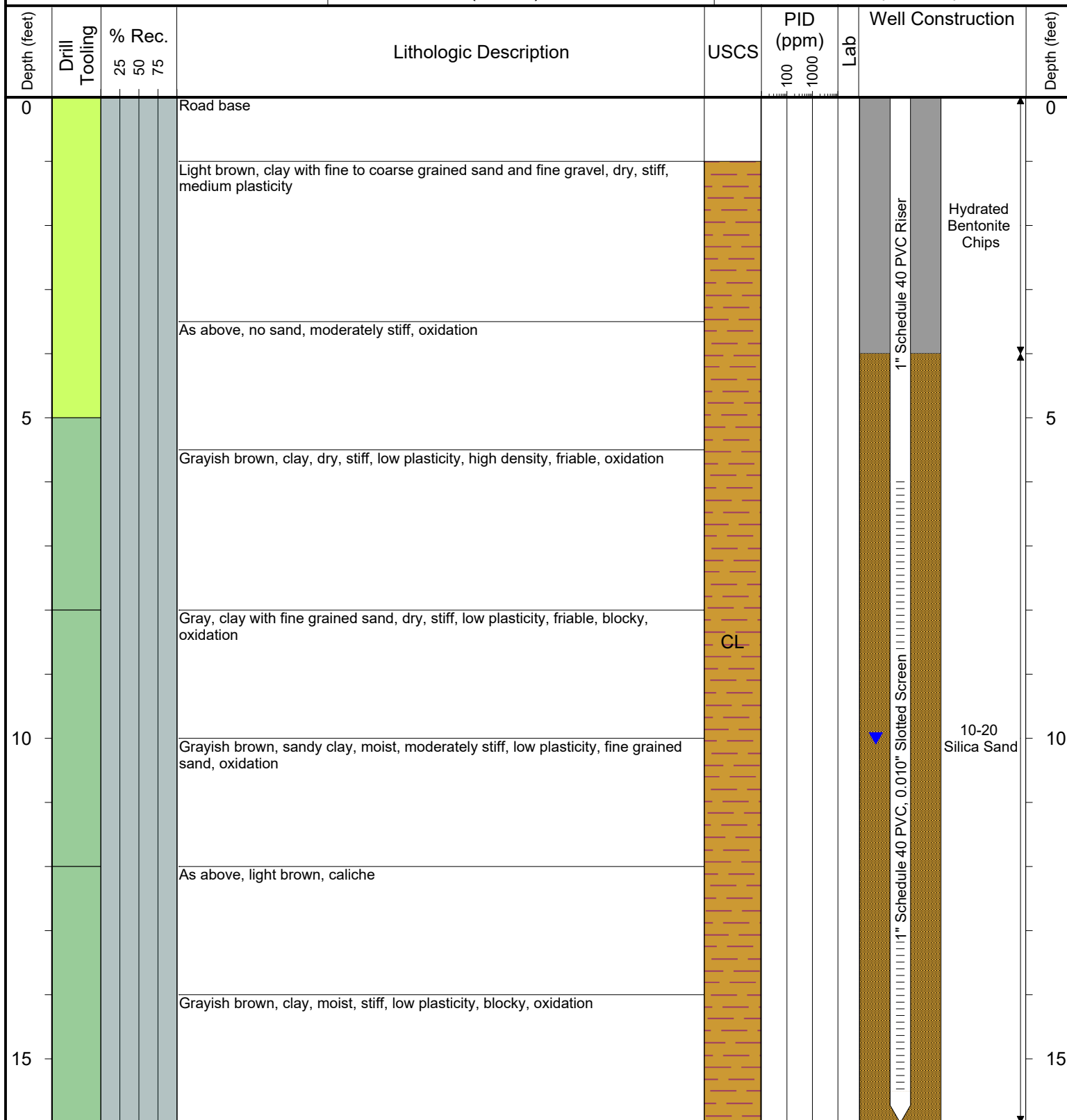
COMPLETION: Stick Up - 2.86'

NORTHING (CO STATE PLANE): 40.017837

EASTING (CO STATE PLANE): -104.8705459

CASING ELEVATION (FT. AMSL): 5051.33

GROUND ELEVATION (FT. AMSL): 5048.47



Drilling / Sample Method:

Macro-Core
Expendable Well Tip
Hand Auger
Hydrovac

Laboratory Sample Types:

Geotechnical Lab
Analytical Chemistry Lab
Geotechnical & Analytical Chemistry Lab



6899 Pecos Street, Unit C
Denver, Colorado 80221

CLIENT: Kerr-McGee Oil & Gas Onshore, LP

LOGGED BY: Eric Siegel, P.G.

PROJECT MANAGER: Robert Cornez

DRILLING CONTRACTOR: Tasman Geosciences, Inc.

DRILLING EQUIPMENT: AMS Powerprobe 9300-SK

DRILL BIT SIZE (INCHES): 2.375"

DATE STARTED - COMPLETED: 3/28/2017

TOTAL WELL DEPTH (FT. BGS): 16

DEPTH TO WATER (FT. BGS): 9.5

Howard 25C-22HZ

BORING / WELL ID: BH10

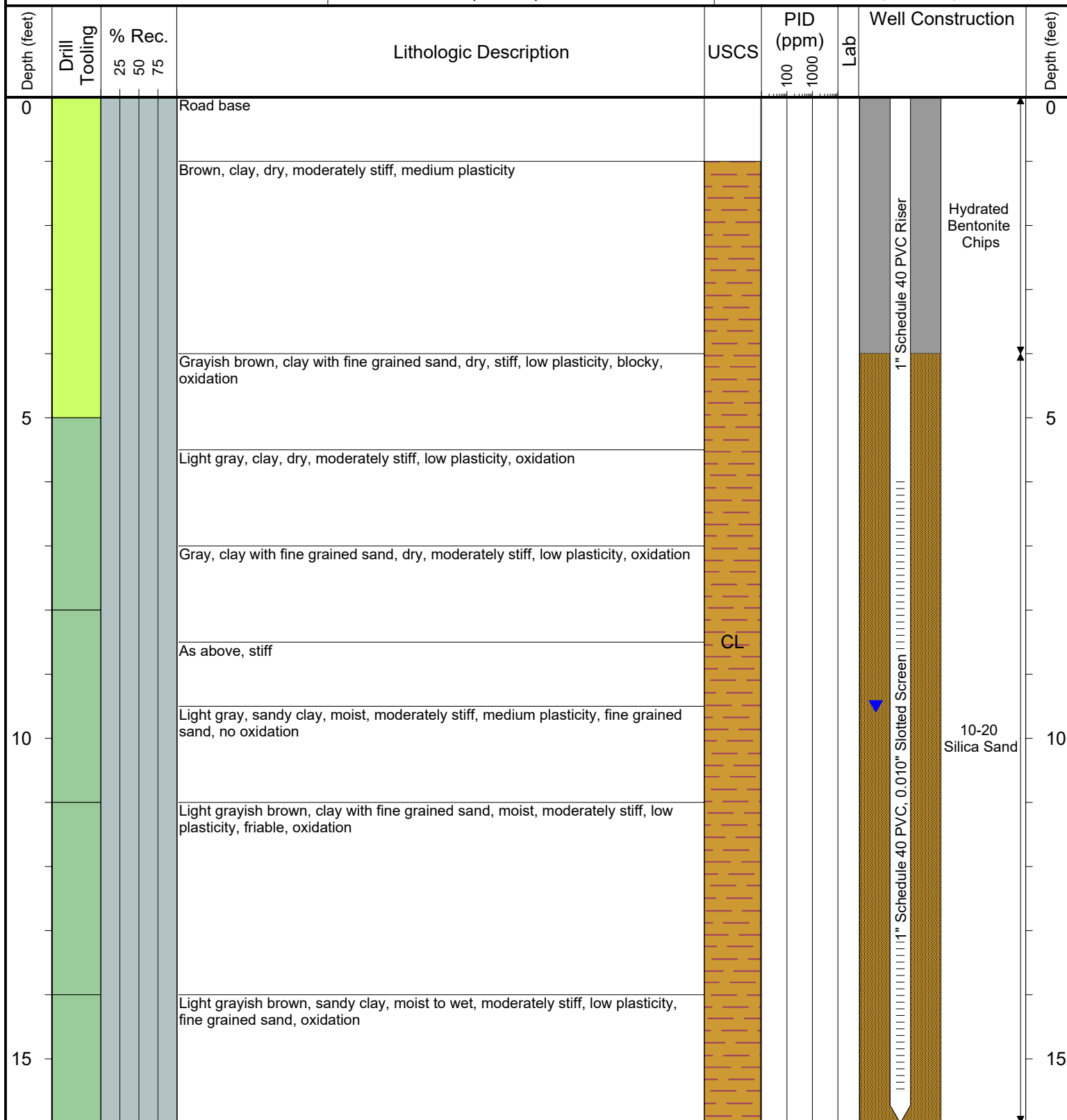
COMPLETION: Stick Up - 3.92'

NORTHING (CO STATE PLANE): 40.017817

EASTING (CO STATE PLANE): -104.870598

CASING ELEVATION (FT. AMSL): 5051.33

GROUND ELEVATION (FT. AMSL): 5047.41



Drilling / Sample Method:

Macro-Core
Expendable Well Tip
Hand Auger
Hydrovac

Laboratory Sample Types:

Geotechnical Lab
Analytical Chemistry Lab
Geotechnical & Analytical Chemistry Lab