

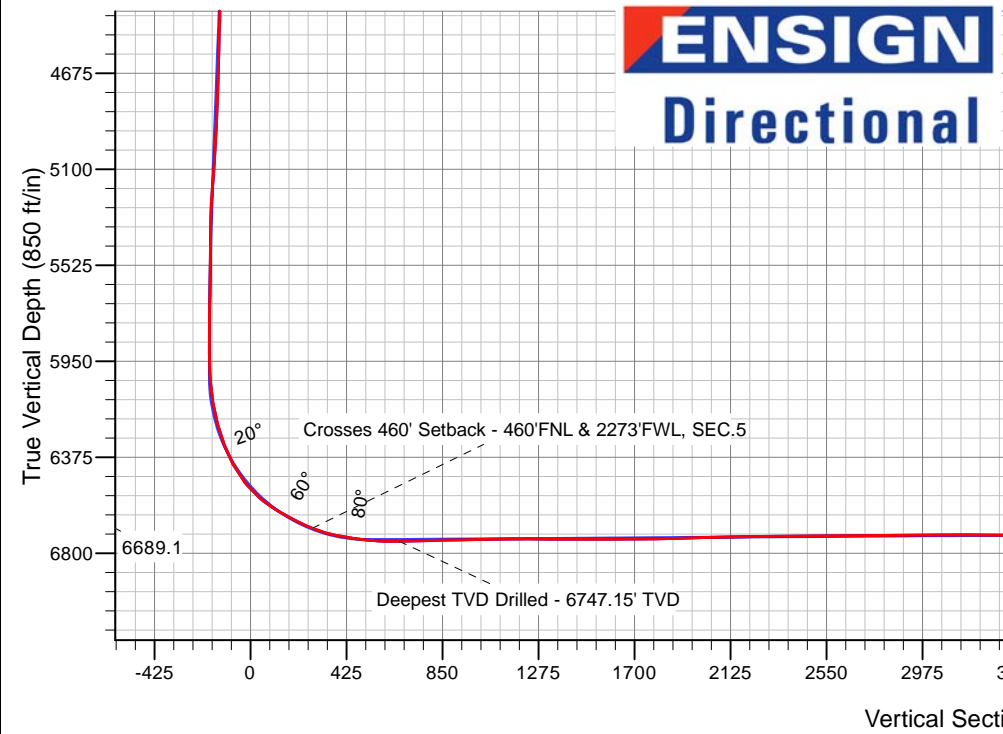
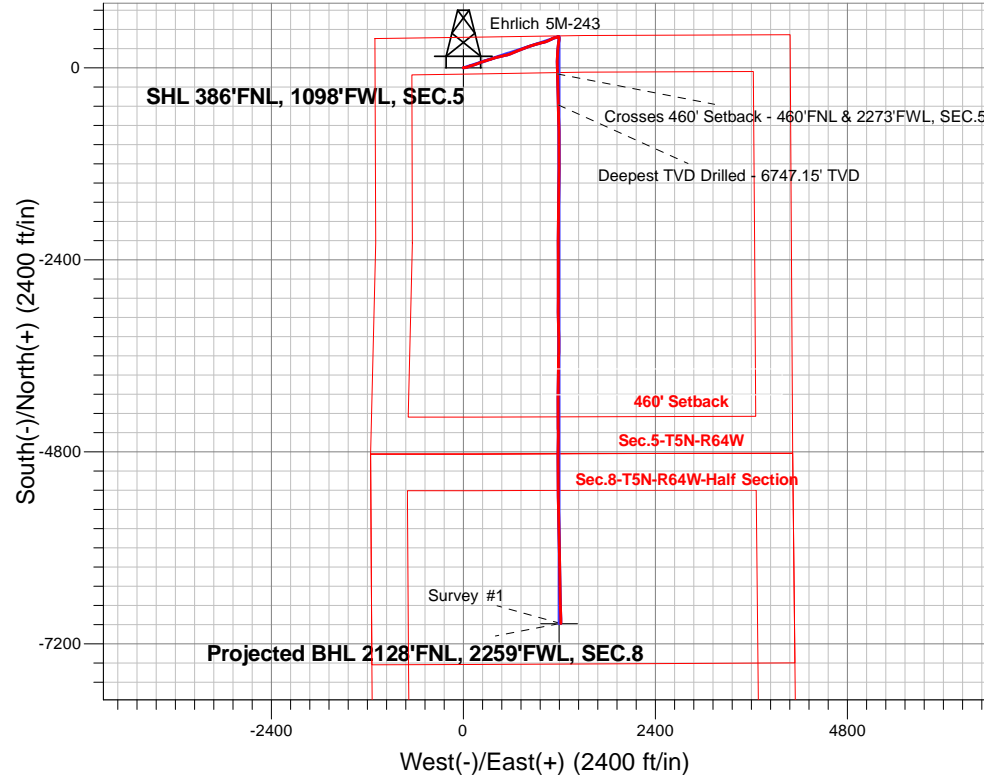
PDC Energy Inc. DJ Basin

Well Name: **Ehrlich 5M-243**

Surface Location: Ehrlich 5N64W5J Pad Sec.5-T5N-R64W
 North American Datum 1983 , US State Plane 1983, Colorado Northern Zone
 Ground Elevation: 4641.0
 +N/-S+E/-W Northing Easting Latitude Longitude Slot
 0.0 0.0 1402330.743256234.49 40.434149 -104.579502
 Ensign Rig #158 - RKB - 23'WELL @ 4664.0ft (Ensign Rig #158 - RKB - 23')

FINAL SURVEY

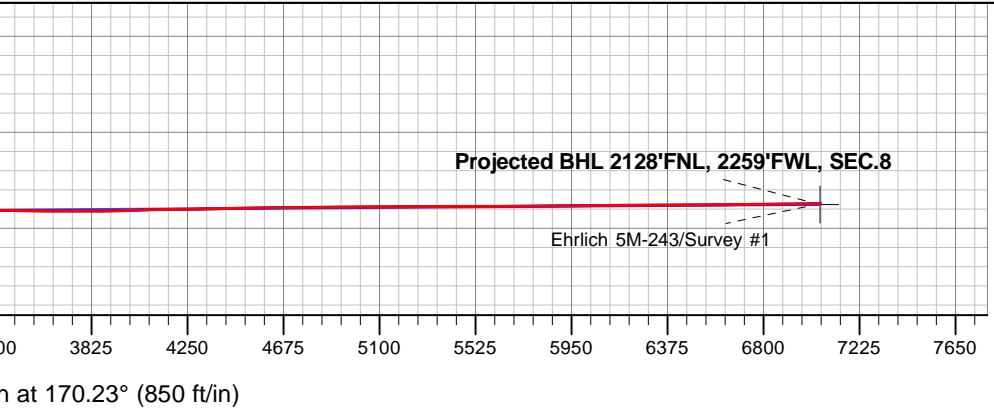
Projected Bottom Hole Location
13,920'MD 6691'TVD 6946'S & 1219'E of SHL
91.0 degree Incl @ 178.3 degree AZM



Ehrlich 5N64W5J Pad Sec.5-T5N-R64W
 Ehrlich 5M-243
 Wellbore #1
 8:40, April 24 2017

ANNOTATIONS		
TVD	MD	Annotation
6689.1	7039.7	Crosses 460' Setback - 460'FNL & 2273'FWL, SEC.5
6747.1	7435.0	Deepest TVD Drilled - 6747.15' TVD

LEGEND	
	Ehrlich 5M-243, Wellbore #1, Plan #1 (4-16-17)R V0
	Wellbore #1
	Survey #1





PDC Energy Inc. DJ Basin

SEC.5-T5N-R64W

Ehrlich 5N64W5J Pad Sec.5-T5N-R64W

Ehrlich 5M-243

Wellbore #1

Survey: Survey #1

Standard Survey Report

24 April, 2017



Company:	PDC Energy Inc. DJ Basin	Local Co-ordinate Reference:	Well Ehrlich 5M-243
Project:	SEC.5-T5N-R64W	TVD Reference:	WELL @ 4664.0ft (Ensign Rig #158 - RKB - 23')
Site:	Ehrlich 5N64W5J Pad Sec.5-T5N-R64W	MD Reference:	WELL @ 4664.0ft (Ensign Rig #158 - RKB - 23')
Well:	Ehrlich 5M-243	North Reference:	True
Wellbore:	Wellbore #1	Survey Calculation Method:	Minimum Curvature
Design:	Wellbore #1	Database:	US_EDM

Project	SEC.5-T5N-R64W, Weld County, Colorado		
Map System:	US State Plane 1983	System Datum:	Mean Sea Level
Geo Datum:	North American Datum 1983		Using Well Reference Point
Map Zone:	Colorado Northern Zone		Using geodetic scale factor

Site	Ehrlich 5N64W5J Pad Sec.5-T5N-R64W				
Site Position:		Northing:	1,402,450.62 usft	Latitude:	40.434478
From:	Lat/Long	Easting:	3,256,234.64 usft	Longitude:	-104.579497
Position Uncertainty:	0.0 ft	Slot Radius:	13-3/16 "	Grid Convergence:	0.59 °

Well	Ehrlich 5M-243					
Well Position	+N/-S	0.0 ft	Northing:	1,402,330.74 usft	Latitude:	40.434149
	+E/-W	0.0 ft	Easting:	3,256,234.49 usft	Longitude:	-104.579502
Position Uncertainty		0.0 ft	Wellhead Elevation:	0.0 ft	Ground Level:	4,641.0 ft

Wellbore	Wellbore #1				
Magnetics	Model Name	Sample Date	Declination (°)	Dip Angle (°)	Field Strength (nT)
	IGRF2010	1/25/2017	8.01	66.91	52,578

Design	Wellbore #1				
Audit Notes:					
Version:	1.0	Phase:	ACTUAL	Tie On Depth:	0.0
Vertical Section:	Depth From (TVD) (ft)	+N/-S (ft)	+E/-W (ft)	Direction (°)	
	0.0	0.0	0.0	170.23	

Survey Program	Date	4/24/2017			
From (ft)	To (ft)	Survey (Wellbore)	Tool Name	Description	
158.0	13,920.0	Survey #1 (Wellbore #1)	MWD	MWD - Standard	

Survey										
Measured Depth (ft)	Inclination (°)	Azimuth (°)	Vertical Depth (ft)	+N/-S (ft)	+E/-W (ft)	Vertical Section (ft)	Dogleg Rate (°/100usft)	Build Rate (°/100usft)	Turn Rate (°/100usft)	
0.0	0.00	0.00	0.0	0.0	0.0	0.0	0.00	0.00	0.00	
158.0	0.40	314.40	158.0	0.4	-0.4	-0.4	0.25	0.25	0.00	
253.0	1.10	67.10	253.0	1.0	0.2	-0.9	1.38	0.74	118.63	
349.0	2.60	92.20	348.9	1.2	3.2	-0.7	1.74	1.56	26.15	
444.0	3.70	84.30	443.8	1.5	8.4	0.0	1.24	1.16	-8.32	
540.0	5.60	83.90	539.5	2.3	16.2	0.5	1.98	1.98	-0.42	
636.0	7.30	75.90	634.9	4.3	26.8	0.3	2.00	1.77	-8.33	
732.0	9.40	74.10	729.8	7.9	40.2	-1.0	2.20	2.19	-1.88	
827.0	11.10	73.00	823.3	12.7	56.4	-2.9	1.80	1.79	-1.16	
923.0	12.80	70.40	917.2	19.0	75.3	-5.9	1.86	1.77	-2.71	

Company:	PDC Energy Inc. DJ Basin	Local Co-ordinate Reference:	Well Ehrlich 5M-243
Project:	SEC.5-T5N-R64W	TVD Reference:	WELL @ 4664.0ft (Ensign Rig #158 - RKB - 23')
Site:	Ehrlich 5N64W5J Pad Sec.5-T5N-R64W	MD Reference:	WELL @ 4664.0ft (Ensign Rig #158 - RKB - 23')
Well:	Ehrlich 5M-243	North Reference:	True
Wellbore:	Wellbore #1	Survey Calculation Method:	Minimum Curvature
Design:	Wellbore #1	Database:	US_EDM

Survey										
Measured Depth (ft)	Inclination (°)	Azimuth (°)	Vertical Depth (ft)	+N/-S (ft)	+E/-W (ft)	Vertical Section (ft)	Dogleg Rate (°/100usft)	Build Rate (°/100usft)	Turn Rate (°/100usft)	
1,019.0	14.10	72.20	1,010.6	26.1	96.4	-9.4	1.42	1.35	1.88	
1,115.0	14.90	73.40	1,103.5	33.2	119.4	-12.5	0.89	0.83	1.25	
1,211.0	14.70	72.50	1,196.4	40.4	142.8	-15.6	0.32	-0.21	-0.94	
1,307.0	14.10	70.10	1,289.3	48.0	165.4	-19.3	0.88	-0.63	-2.50	
1,403.0	13.70	68.80	1,382.5	56.1	187.0	-23.6	0.53	-0.42	-1.35	
1,498.0	13.10	71.30	1,475.0	63.6	207.7	-27.5	0.88	-0.63	2.63	
1,594.0	11.90	70.60	1,568.7	70.4	227.4	-30.8	1.26	-1.25	-0.73	
1,630.0	11.20	69.90	1,603.9	72.9	234.2	-32.1	1.98	-1.94	-1.94	
1,691.0	10.00	67.80	1,663.9	76.9	244.6	-34.3	2.07	-1.97	-3.44	
1,787.0	10.60	70.20	1,758.4	83.0	260.6	-37.6	0.77	0.63	2.50	
1,883.0	12.60	74.10	1,852.4	88.9	279.0	-40.3	2.24	2.08	4.06	
1,979.0	14.10	71.60	1,945.8	95.5	300.2	-43.1	1.67	1.56	-2.60	
2,074.0	16.00	74.60	2,037.5	102.6	323.8	-46.2	2.16	2.00	3.16	
2,170.0	14.90	72.30	2,130.1	109.9	348.3	-49.2	1.31	-1.15	-2.40	
2,266.0	13.70	70.80	2,223.1	117.3	370.8	-52.7	1.31	-1.25	-1.56	
2,362.0	15.50	76.00	2,316.0	124.2	394.0	-55.5	2.32	1.88	5.42	
2,458.0	14.80	74.50	2,408.7	130.6	418.3	-57.7	0.84	-0.73	-1.56	
2,554.0	15.50	73.60	2,501.3	137.5	442.4	-60.4	0.77	0.73	-0.94	
2,649.0	14.40	79.40	2,593.1	143.2	466.2	-62.1	1.95	-1.16	6.11	
2,745.0	16.30	77.30	2,685.7	148.4	491.0	-62.9	2.06	1.98	-2.19	
2,841.0	16.10	75.50	2,777.9	154.7	517.1	-64.7	0.56	-0.21	-1.88	
2,937.0	15.70	74.80	2,870.2	161.4	542.5	-67.0	0.46	-0.42	-0.73	
3,033.0	15.60	72.50	2,962.6	168.7	567.3	-70.0	0.65	-0.10	-2.40	
3,128.0	14.40	72.30	3,054.4	176.1	590.8	-73.4	1.26	-1.26	-0.21	
3,224.0	14.50	66.90	3,147.4	184.5	613.2	-77.8	1.41	0.10	-5.63	
3,320.0	13.90	65.00	3,240.4	194.1	634.7	-83.6	0.79	-0.63	-1.98	
3,416.0	14.90	67.40	3,333.4	203.7	656.6	-89.4	1.21	1.04	2.50	
3,511.0	13.50	66.90	3,425.5	212.7	678.0	-94.6	1.48	-1.47	-0.53	
3,608.0	14.30	69.20	3,519.7	221.4	699.6	-99.5	1.00	0.82	2.37	
3,703.0	15.20	69.50	3,611.5	230.0	722.3	-104.1	0.95	0.95	0.32	
3,799.0	15.30	69.00	3,704.2	238.9	745.9	-108.9	0.17	0.10	-0.52	
3,895.0	15.20	69.50	3,796.8	247.8	769.5	-113.7	0.17	-0.10	0.52	
3,990.0	15.50	68.10	3,888.4	256.9	792.9	-118.7	0.50	0.32	-1.47	
4,086.0	14.70	66.50	3,981.1	266.6	816.0	-124.3	0.94	-0.83	-1.67	
4,181.0	14.90	75.00	4,072.9	274.6	838.9	-128.3	2.29	0.21	8.95	
4,277.0	15.40	73.80	4,165.6	281.3	863.0	-130.8	0.61	0.52	-1.25	
4,373.0	13.50	73.90	4,258.6	288.0	886.0	-133.5	1.98	-1.98	0.10	
4,468.0	13.80	77.40	4,350.9	293.5	907.8	-135.3	0.92	0.32	3.68	
4,564.0	15.30	74.30	4,443.8	299.4	931.1	-137.1	1.76	1.56	-3.23	
4,660.0	14.10	73.20	4,536.6	306.2	954.5	-139.9	1.28	-1.25	-1.15	
4,755.0	14.60	74.30	4,628.7	312.8	977.1	-142.5	0.60	0.53	1.16	
4,851.0	15.80	75.30	4,721.3	319.4	1,001.4	-144.9	1.28	1.25	1.04	
4,947.0	13.70	73.60	4,814.2	325.9	1,025.0	-147.3	2.23	-2.19	-1.77	
5,042.0	14.50	67.80	4,906.3	333.6	1,046.8	-151.2	1.71	0.84	-6.11	

Company:	PDC Energy Inc. DJ Basin	Local Co-ordinate Reference:	Well Ehrlich 5M-243
Project:	SEC.5-T5N-R64W	TVD Reference:	WELL @ 4664.0ft (Ensign Rig #158 - RKB - 23')
Site:	Ehrlich 5N64W5J Pad Sec.5-T5N-R64W	MD Reference:	WELL @ 4664.0ft (Ensign Rig #158 - RKB - 23')
Well:	Ehrlich 5M-243	North Reference:	True
Wellbore:	Wellbore #1	Survey Calculation Method:	Minimum Curvature
Design:	Wellbore #1	Database:	US_EDM

Survey										
Measured Depth (ft)	Inclination (°)	Azimuth (°)	Vertical Depth (ft)	+N/-S (ft)	+E/-W (ft)	Vertical Section (ft)	Dogleg Rate (°/100usft)	Build Rate (°/100usft)	Turn Rate (°/100usft)	
5,138.0	13.20	65.70	4,999.5	342.7	1,067.9	-156.5	1.45	-1.35	-2.19	
5,233.0	14.20	64.30	5,091.8	352.2	1,088.3	-162.5	1.11	1.05	-1.47	
5,329.0	12.10	59.30	5,185.3	362.4	1,107.5	-169.3	2.49	-2.19	-5.21	
5,425.0	9.60	66.50	5,279.6	370.8	1,123.5	-174.8	2.96	-2.60	7.50	
5,521.0	9.10	78.10	5,374.3	375.5	1,138.3	-177.0	2.03	-0.52	12.08	
5,617.0	8.30	76.40	5,469.2	378.7	1,152.5	-177.7	0.88	-0.83	-1.77	
5,713.0	7.60	75.20	5,564.3	382.0	1,165.3	-178.7	0.75	-0.73	-1.25	
5,808.0	5.80	68.50	5,658.6	385.3	1,175.9	-180.3	2.06	-1.89	-7.05	
5,904.0	4.50	67.40	5,754.2	388.6	1,183.9	-182.1	1.36	-1.35	-1.15	
5,999.0	2.70	89.20	5,849.0	390.0	1,189.5	-182.6	2.35	-1.89	22.95	
6,095.0	1.10	100.30	5,945.0	389.9	1,192.7	-181.9	1.70	-1.67	11.56	
6,191.0	4.40	171.80	6,040.9	386.1	1,194.1	-177.9	4.36	3.44	74.48	
6,287.0	9.10	175.50	6,136.2	374.9	1,195.3	-166.7	4.91	4.90	3.85	
6,383.0	15.30	178.50	6,230.0	354.6	1,196.2	-146.5	6.49	6.46	3.13	
6,479.0	21.60	186.30	6,321.0	324.3	1,194.6	-117.0	7.03	6.56	8.13	
6,574.0	30.10	189.60	6,406.4	283.4	1,188.7	-77.6	9.07	8.95	3.47	
6,670.0	39.10	187.80	6,485.4	229.6	1,180.5	-26.0	9.43	9.38	-1.88	
6,766.0	49.80	181.00	6,553.8	162.7	1,175.8	39.1	12.19	11.15	-7.08	
6,862.0	59.30	179.90	6,609.5	84.6	1,175.2	116.0	9.94	9.90	-1.15	
6,957.0	63.00	181.30	6,655.3	1.4	1,174.3	197.9	4.10	3.89	1.47	
7,039.7	68.68	178.00	6,689.1	-74.0	1,174.8	272.3	7.77	6.87	-3.98	
Crosses 460' Setback - 460'FNL & 2273'FWL, SEC.5										
7,053.0	69.60	177.50	6,693.9	-86.4	1,175.3	284.6	7.77	6.91	-3.79	
7,149.0	78.30	177.50	6,720.4	-178.5	1,179.3	376.0	9.06	9.06	0.00	
7,245.0	82.50	179.20	6,736.4	-273.1	1,182.1	469.7	4.71	4.38	1.77	
7,340.0	86.40	178.30	6,745.6	-367.6	1,184.1	563.2	4.21	4.11	-0.95	
7,435.0	91.70	178.50	6,747.1	-462.5	1,186.8	657.2	5.58	5.58	0.21	
Deepest TVD Drilled - 6747.15' TVD										
7,531.0	91.60	178.70	6,744.4	-558.5	1,189.1	752.1	0.23	-0.10	0.21	
7,626.0	91.30	178.20	6,742.0	-653.4	1,191.7	846.1	0.61	-0.32	-0.53	
7,722.0	91.00	179.70	6,740.1	-749.4	1,193.4	941.0	1.59	-0.31	1.56	
7,817.0	90.80	179.20	6,738.6	-844.4	1,194.4	1,034.7	0.57	-0.21	-0.53	
7,913.0	91.20	178.70	6,736.9	-940.3	1,196.1	1,129.6	0.67	0.42	-0.52	
8,009.0	89.30	180.60	6,736.5	-1,036.3	1,196.7	1,224.3	2.80	-1.98	1.98	
8,105.0	89.30	179.90	6,737.6	-1,132.3	1,196.3	1,318.8	0.73	0.00	-0.73	
8,200.0	89.90	181.20	6,738.3	-1,227.3	1,195.4	1,412.3	1.51	0.63	1.37	
8,296.0	90.20	181.20	6,738.2	-1,323.3	1,193.4	1,506.5	0.31	0.31	0.00	
8,392.0	90.50	180.10	6,737.6	-1,419.3	1,192.3	1,601.0	1.19	0.31	-1.15	
8,487.0	90.60	180.50	6,736.7	-1,514.3	1,191.8	1,694.5	0.43	0.11	0.42	
8,583.0	90.40	180.80	6,735.9	-1,610.3	1,190.7	1,788.9	0.38	-0.21	0.31	
8,678.0	91.20	180.50	6,734.6	-1,705.2	1,189.6	1,882.3	0.90	0.84	-0.32	
8,804.0	91.80	179.90	6,731.3	-1,831.2	1,189.2	2,006.4	0.67	0.48	-0.48	
8,900.0	90.90	180.60	6,729.0	-1,927.2	1,188.7	2,100.9	1.19	-0.94	0.73	

Company:	PDC Energy Inc. DJ Basin	Local Co-ordinate Reference:	Well Ehrlich 5M-243
Project:	SEC.5-T5N-R64W	TVD Reference:	WELL @ 4664.0ft (Ensign Rig #158 - RKB - 23')
Site:	Ehrlich 5N64W5J Pad Sec.5-T5N-R64W	MD Reference:	WELL @ 4664.0ft (Ensign Rig #158 - RKB - 23')
Well:	Ehrlich 5M-243	North Reference:	True
Wellbore:	Wellbore #1	Survey Calculation Method:	Minimum Curvature
Design:	Wellbore #1	Database:	US_EDM

Survey										
Measured Depth (ft)	Inclination (°)	Azimuth (°)	Vertical Depth (ft)	+N/-S (ft)	+E/-W (ft)	Vertical Section (ft)	Dogleg Rate (°/100usft)	Build Rate (°/100usft)	Turn Rate (°/100usft)	
8,995.0	91.50	180.50	6,727.0	-2,022.1	1,187.8	2,194.3	0.64	0.63	-0.11	
9,091.0	90.20	179.90	6,725.6	-2,118.1	1,187.5	2,288.9	1.49	-1.35	-0.63	
9,186.0	91.10	179.60	6,724.5	-2,213.1	1,187.9	2,382.6	1.00	0.95	-0.32	
9,282.0	89.90	180.10	6,723.7	-2,309.1	1,188.2	2,477.2	1.35	-1.25	0.52	
9,378.0	90.90	180.30	6,723.0	-2,405.1	1,187.8	2,571.8	1.06	1.04	0.21	
9,474.0	89.70	180.10	6,722.5	-2,501.1	1,187.5	2,666.3	1.27	-1.25	-0.21	
9,569.0	90.40	180.10	6,722.4	-2,596.1	1,187.3	2,759.9	0.74	0.74	0.00	
9,665.0	91.40	180.10	6,720.9	-2,692.1	1,187.2	2,854.5	1.04	1.04	0.00	
9,761.0	90.00	180.60	6,719.7	-2,788.1	1,186.6	2,949.0	1.55	-1.46	0.52	
9,857.0	90.70	180.10	6,719.1	-2,884.1	1,186.0	3,043.5	0.90	0.73	-0.52	
9,952.0	89.30	180.10	6,719.1	-2,979.1	1,185.8	3,137.1	1.47	-1.47	0.00	
10,048.0	89.40	179.40	6,720.2	-3,075.1	1,186.2	3,231.7	0.74	0.10	-0.73	
10,144.0	89.90	178.70	6,720.8	-3,171.0	1,187.8	3,326.6	0.90	0.52	-0.73	
10,239.0	90.10	178.50	6,720.8	-3,266.0	1,190.2	3,420.6	0.30	0.21	-0.21	
10,335.0	89.10	179.60	6,721.5	-3,362.0	1,191.7	3,515.4	1.55	-1.04	1.15	
10,431.0	89.20	179.20	6,722.9	-3,458.0	1,192.7	3,610.2	0.43	0.10	-0.42	
10,527.0	88.90	181.30	6,724.5	-3,554.0	1,192.3	3,704.7	2.21	-0.31	2.19	
10,622.0	90.40	181.30	6,725.1	-3,648.9	1,190.2	3,797.9	1.58	1.58	0.00	
10,718.0	91.00	181.00	6,723.9	-3,744.9	1,188.2	3,892.2	0.70	0.63	-0.31	
10,814.0	91.50	180.80	6,721.8	-3,840.9	1,186.7	3,986.5	0.56	0.52	-0.21	
10,910.0	92.30	180.60	6,718.6	-3,936.8	1,185.6	4,080.9	0.86	0.83	-0.21	
11,005.0	90.30	180.30	6,716.5	-4,031.8	1,184.8	4,174.3	2.13	-2.11	-0.32	
11,101.0	90.90	179.90	6,715.5	-4,127.8	1,184.7	4,268.9	0.75	0.63	-0.42	
11,197.0	90.90	180.60	6,714.0	-4,223.8	1,184.2	4,363.4	0.73	0.00	0.73	
11,292.0	91.80	180.10	6,711.7	-4,318.7	1,183.7	4,456.9	1.08	0.95	-0.53	
11,387.0	90.20	179.70	6,710.1	-4,413.7	1,183.8	4,550.6	1.74	-1.68	-0.42	
11,483.0	91.30	178.50	6,708.8	-4,509.7	1,185.3	4,645.4	1.70	1.15	-1.25	
11,579.0	89.80	179.90	6,707.9	-4,605.7	1,186.7	4,740.2	2.14	-1.56	1.46	
11,674.0	90.20	180.10	6,707.9	-4,700.7	1,186.7	4,833.8	0.47	0.42	0.21	
11,769.0	90.90	179.70	6,707.0	-4,795.7	1,186.8	4,927.5	0.85	0.74	-0.42	
11,865.0	90.30	180.10	6,706.0	-4,891.7	1,187.0	5,022.1	0.75	-0.63	0.42	
11,961.0	90.50	180.10	6,705.3	-4,987.7	1,186.8	5,116.7	0.21	0.21	0.00	
12,056.0	91.40	179.60	6,703.7	-5,082.6	1,187.1	5,210.4	1.08	0.95	-0.53	
12,152.0	89.30	180.80	6,703.1	-5,178.6	1,186.7	5,304.9	2.52	-2.19	1.25	
12,248.0	89.60	180.60	6,704.1	-5,274.6	1,185.6	5,399.3	0.38	0.31	-0.21	
12,343.0	90.20	179.90	6,704.2	-5,369.6	1,185.2	5,492.8	0.97	0.63	-0.74	
12,438.0	90.60	179.70	6,703.6	-5,464.6	1,185.5	5,586.5	0.47	0.42	-0.21	
12,534.0	91.20	179.20	6,702.1	-5,560.6	1,186.4	5,681.3	0.81	0.63	-0.52	
12,630.0	89.40	178.20	6,701.6	-5,656.6	1,188.6	5,776.2	2.14	-1.88	-1.04	
12,726.0	90.00	178.50	6,702.1	-5,752.5	1,191.4	5,871.2	0.70	0.63	0.31	
12,821.0	90.80	178.20	6,701.4	-5,847.5	1,194.1	5,965.3	0.90	0.84	-0.32	
12,917.0	91.50	178.20	6,699.5	-5,943.4	1,197.1	6,060.3	0.73	0.73	0.00	
13,013.0	89.80	177.80	6,698.4	-6,039.3	1,200.5	6,155.5	1.82	-1.77	-0.42	
13,109.0	90.30	177.80	6,698.3	-6,135.3	1,204.1	6,250.6	0.52	0.52	0.00	

Company:	PDC Energy Inc. DJ Basin	Local Co-ordinate Reference:	Well Ehrlich 5M-243
Project:	SEC.5-T5N-R64W	TVD Reference:	WELL @ 4664.0ft (Ensign Rig #158 - RKB - 23')
Site:	Ehrlich 5N64W5J Pad Sec.5-T5N-R64W	MD Reference:	WELL @ 4664.0ft (Ensign Rig #158 - RKB - 23')
Well:	Ehrlich 5M-243	North Reference:	True
Wellbore:	Wellbore #1	Survey Calculation Method:	Minimum Curvature
Design:	Wellbore #1	Database:	US_EDM

Measured Depth (ft)	Inclination (°)	Azimuth (°)	Vertical Depth (ft)	+N/-S (ft)	+E/-W (ft)	Vertical Section (ft)	Dogleg Rate (°/100usft)	Build Rate (°/100usft)	Turn Rate (°/100usft)
13,203.0	90.20	179.20	6,697.9	-6,229.2	1,206.6	6,343.6	1.49	-0.11	1.49
13,299.0	90.90	179.40	6,697.0	-6,325.2	1,207.8	6,438.4	0.76	0.73	0.21
13,395.0	89.90	179.40	6,696.3	-6,421.2	1,208.8	6,533.2	1.04	-1.04	0.00
13,490.0	90.30	179.20	6,696.1	-6,516.2	1,209.9	6,627.0	0.47	0.42	-0.21
13,587.0	91.20	179.00	6,694.9	-6,613.2	1,211.5	6,722.9	0.95	0.93	-0.21
13,682.0	90.00	179.20	6,693.9	-6,708.2	1,213.0	6,816.7	1.28	-1.26	0.21
13,865.0	91.00	178.30	6,692.3	-6,891.1	1,216.9	6,997.7	0.74	0.55	-0.49
13,920.0	91.00	178.30	6,691.3	-6,946.1	1,218.6	7,052.1	0.00	0.00	0.00

Target Name	Dip Angle (°)	Dip Dir. (°)	TVD (ft)	+N/-S (ft)	+E/-W (ft)	Northing (usft)	Easting (usft)	Latitude	Longitude
SHL 386'FNL, 1098'FWL - hit/miss target - Shape - Point	0.00	0.00	1.0	0.0	0.0	1,402,330.76	3,256,234.49	40.434149	-104.579502
BHL 2130'FNL, 2336'FWL - survey misses target center by 23.0ft at 13920.0ft MD (6691.3 TVD, -6946.1 N, 1218.6 E) - Point	0.00	0.00	6,695.0	-6,947.8	1,196.0	1,395,396.03	3,257,502.48	40.415078	-104.575207

Measured Depth (ft)	Vertical Depth (ft)	Local Coordinates +N/-S (ft)	Local Coordinates +E/-W (ft)	Comment
7,039.7	6,689.1	-74.0	1,174.8	Crosses 460' Setback - 460'FNL & 2273'FWL, SEC.5
7,435.0	6,747.1	-462.5	1,186.8	Deepest TVD Drilled - 6747.15' TVD

Checked By: _____ Approved By: _____ Date: _____