

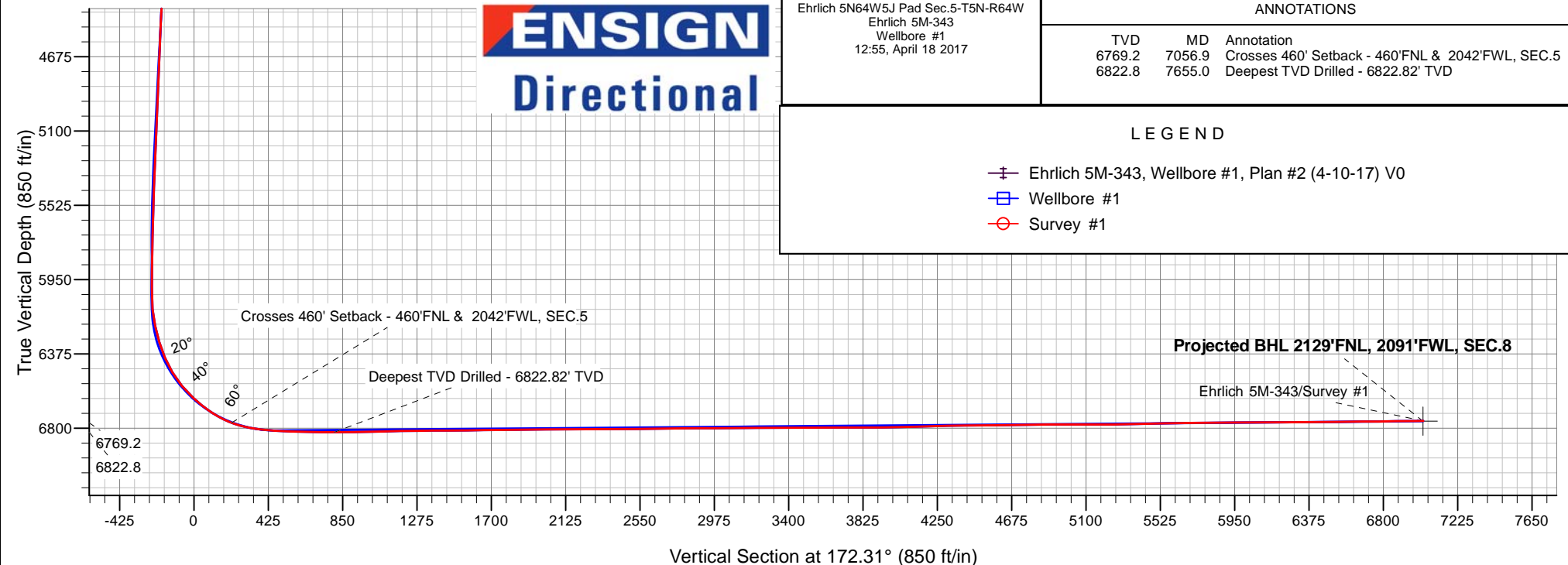
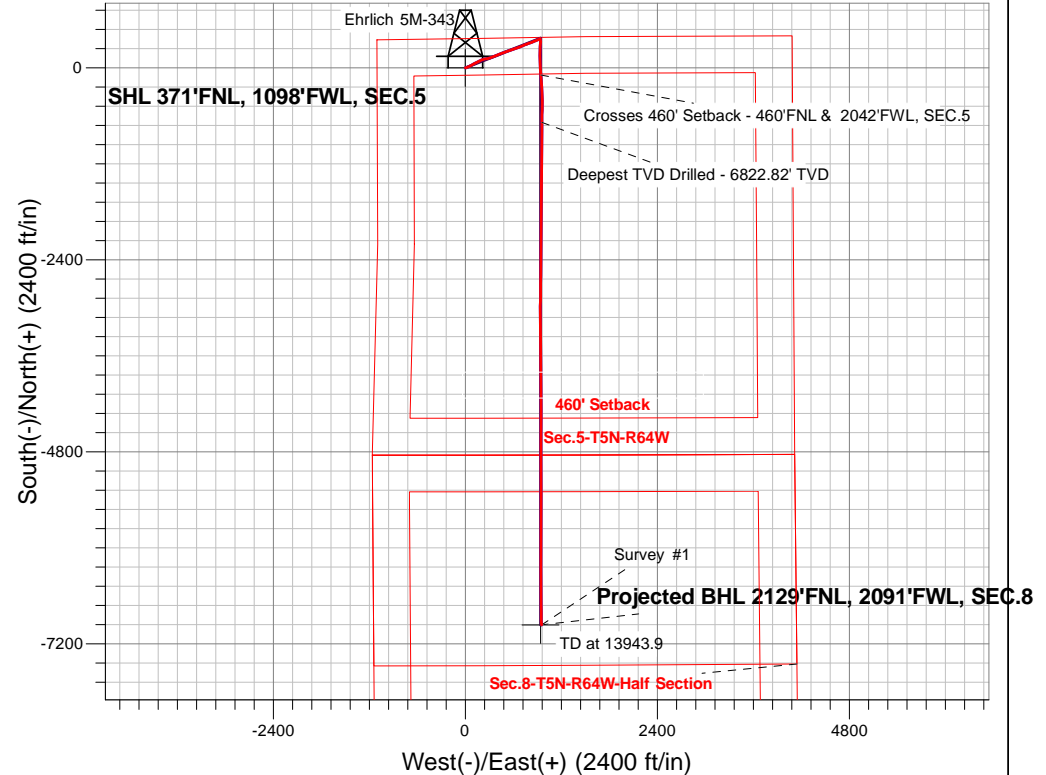
PDC Energy Inc. DJ Basin

Well Name: **Ehrlich 5M-343**

Surface Location: Ehrlich 5N64W5J Pad Sec.5-T5N-R64W
North American Datum 1983 , US State Plane 1983, Colorado Northern Zone
Ground Elevation: 4641.0
+N/-S+E/-W Northing Easting Latitude Longitude Slot
0.0 0.0 1402345.688256234.61 40.434190 -104.579501
Ensign Rig #158 - RKB - 23'WELL @ 4664.0ft (Ensign Rig #158 - RKB - 23')

FINAL SURVEY

Projected Bottom Hole Location
13,937'MD 6758'TVD 6963'S & 951'E of SHL
90.9 degree Incl @ 179.2 degree AZM





PDC Energy Inc. DJ Basin

SEC.5-T5N-R64W

Ehrlich 5N64W5J Pad Sec.5-T5N-R64W

Ehrlich 5M-343

Wellbore #1

Survey: Survey #1

Standard Survey Report

18 April, 2017

Company:	PDC Energy Inc. DJ Basin	Local Co-ordinate Reference:	Well Ehrlich 5M-343
Project:	SEC.5-T5N-R64W	TVD Reference:	WELL @ 4664.0ft (Ensign Rig #158 - RKB - 23')
Site:	Ehrlich 5N64W5J Pad Sec.5-T5N-R64W	MD Reference:	WELL @ 4664.0ft (Ensign Rig #158 - RKB - 23')
Well:	Ehrlich 5M-343	North Reference:	True
Wellbore:	Wellbore #1	Survey Calculation Method:	Minimum Curvature
Design:	Wellbore #1	Database:	US_EDM

Project	SEC.5-T5N-R64W, Weld County, Colorado		
Map System:	US State Plane 1983	System Datum:	Mean Sea Level
Geo Datum:	North American Datum 1983		Using Well Reference Point
Map Zone:	Colorado Northern Zone		Using geodetic scale factor

Site		Ehrlich 5N64W5J Pad Sec.5-T5N-R64W						
Site Position:		Northing:	1,402,450.62	usft	Latitude:	40.434478		
From:	Lat/Long	Easting:	3,256,234.64	usft	Longitude:	-104.579497		
Position Uncertainty:	0.0	ft	Slot Radius:	13-3/16	"	Grid Convergence:	0.59	°

Well	Ehrlich 5M-343					
Well Position	+N/-S	0.0 ft	Northing:	1,402,345.68 usft	Latitude:	40.434190
	+E/-W	0.0 ft	Easting:	3,256,234.61 usft	Longitude:	-104.579501
Position Uncertainty		0.0 ft	Wellhead Elevation:	0.0 ft	Ground Level:	4,641.0 ft

Wellbore	Wellbore #1				
Magnetics	Model Name	Sample Date	Declination (°)	Dip Angle (°)	Field Strength (nT)
	IGRF2010	4/10/2017	7.98	66.90	52,556

Design	Wellbore #1				
Audit Notes:					
Version:	1.0	Phase:	ACTUAL	Tie On Depth:	0.0
Vertical Section:	Depth From (TVD) (ft)	+N/-S (ft)	+E/-W (ft)	Direction (°)	
	0.0	0.0	0.0	172.31	

Survey Program	Date	4/18/2017			
From (ft)	To (ft)	Survey (Wellbore)	Tool Name	Description	
157.0	13,937.0	Survey #1 (Wellbore #1)	MWD	MWD - Standard	

Survey										
Measured Depth (ft)	Inclination (°)	Azimuth (°)	Vertical Depth (ft)	+N/-S (ft)	+E/-W (ft)	Vertical Section (ft)	Dogleg Rate (°/100usft)	Build Rate (°/100usft)	Turn Rate (°/100usft)	
0.0	0.00	0.00	0.0	0.0	0.0	0.0	0.00	0.00	0.00	
157.0	0.40	134.00	157.0	-0.4	0.4	0.4	0.25	0.25	0.00	
252.0	0.20	70.10	252.0	-0.6	0.8	0.7	0.38	-0.21	-67.26	
348.0	0.20	114.90	348.0	-0.6	1.1	0.7	0.16	0.00	46.67	
444.0	0.90	71.10	444.0	-0.4	2.0	0.7	0.80	0.73	-45.63	
539.0	2.20	80.30	539.0	0.2	4.5	0.4	1.39	1.37	9.68	
635.0	4.00	71.30	634.8	1.5	9.5	-0.3	1.94	1.88	-9.38	
731.0	5.90	64.90	730.4	4.7	17.1	-2.4	2.06	1.98	-6.67	
826.0	7.60	67.20	824.8	9.2	27.3	-5.5	1.81	1.79	2.42	
922.0	9.40	65.60	919.7	14.9	40.3	-9.4	1.89	1.88	-1.67	

Company:	PDC Energy Inc. DJ Basin	Local Co-ordinate Reference:	Well Ehrlich 5M-343
Project:	SEC.5-T5N-R64W	TVD Reference:	WELL @ 4664.0ft (Ensign Rig #158 - RKB - 23')
Site:	Ehrlich 5N64W5J Pad Sec.5-T5N-R64W	MD Reference:	WELL @ 4664.0ft (Ensign Rig #158 - RKB - 23')
Well:	Ehrlich 5M-343	North Reference:	True
Wellbore:	Wellbore #1	Survey Calculation Method:	Minimum Curvature
Design:	Wellbore #1	Database:	US_EDM

Survey									
Measured Depth (ft)	Inclination (°)	Azimuth (°)	Vertical Depth (ft)	+N/-S (ft)	+E/-W (ft)	Vertical Section (ft)	Dogleg Rate (°/100usft)	Build Rate (°/100usft)	Turn Rate (°/100usft)
1,018.0	11.10	66.20	1,014.2	21.9	55.9	-14.2	1.77	1.77	0.63
1,114.0	12.00	62.30	1,108.3	30.2	73.2	-20.2	1.24	0.94	-4.06
1,210.0	11.90	60.20	1,202.2	39.8	90.6	-27.3	0.46	-0.10	-2.19
1,306.0	11.80	59.70	1,296.1	49.7	107.7	-34.8	0.15	-0.10	-0.52
1,402.0	12.50	60.90	1,390.0	59.7	125.2	-42.4	0.78	0.73	1.25
1,498.0	12.00	63.50	1,483.8	69.2	143.2	-49.4	0.78	-0.52	2.71
1,593.0	10.40	63.40	1,577.0	77.4	159.7	-55.4	1.68	-1.68	-0.11
1,630.0	9.70	64.10	1,613.4	80.3	165.5	-57.4	1.92	-1.89	1.89
1,786.0	9.60	62.70	1,767.2	92.0	188.9	-65.9	0.16	-0.06	-0.90
1,882.0	10.60	67.40	1,861.7	99.1	204.2	-70.9	1.35	1.04	4.90
1,978.0	11.30	74.40	1,956.0	105.0	221.4	-74.4	1.56	0.73	7.29
2,074.0	12.80	78.60	2,049.9	109.6	240.9	-76.4	1.81	1.56	4.38
2,169.0	14.20	78.80	2,142.2	114.0	262.6	-77.8	1.47	1.47	0.21
2,265.0	13.50	79.50	2,235.4	118.3	285.2	-79.1	0.75	-0.73	0.73
2,361.0	14.50	70.70	2,328.6	124.3	307.6	-82.1	2.45	1.04	-9.17
2,457.0	13.70	70.00	2,421.7	132.2	329.6	-86.9	0.85	-0.83	-0.73
2,553.0	13.20	67.90	2,515.1	140.2	350.4	-92.1	0.73	-0.52	-2.19
2,649.0	12.10	67.40	2,608.7	148.2	369.9	-97.4	1.15	-1.15	-0.52
2,745.0	13.70	69.50	2,702.3	156.0	389.8	-102.5	1.74	1.67	2.19
2,840.0	13.50	68.50	2,794.6	164.0	410.7	-107.6	0.32	-0.21	-1.05
2,936.0	12.70	67.00	2,888.1	172.3	430.8	-113.1	0.91	-0.83	-1.56
3,032.0	12.30	67.70	2,981.9	180.3	450.0	-118.5	0.45	-0.42	0.73
3,128.0	12.00	72.30	3,075.7	187.2	468.9	-122.8	1.06	-0.31	4.79
3,223.0	12.90	68.80	3,168.5	194.0	488.2	-127.0	1.24	0.95	-3.68
3,319.0	12.10	69.70	3,262.2	201.4	507.7	-131.7	0.86	-0.83	0.94
3,416.0	11.30	69.20	3,357.2	208.3	526.1	-136.0	0.83	-0.82	-0.52
3,511.0	12.00	75.00	3,450.2	214.1	544.3	-139.4	1.44	0.74	6.11
3,607.0	13.20	71.60	3,543.9	220.2	564.4	-142.7	1.47	1.25	-3.54
3,702.0	13.20	71.40	3,636.4	227.1	584.9	-146.8	0.05	0.00	-0.21
3,798.0	13.30	70.40	3,729.9	234.3	605.7	-151.1	0.26	0.10	-1.04
3,894.0	13.50	69.70	3,823.3	241.9	626.6	-155.9	0.27	0.21	-0.73
3,990.0	13.50	69.50	3,916.6	249.7	647.7	-160.8	0.05	0.00	-0.21
4,085.0	12.80	68.10	4,009.1	257.5	667.8	-165.8	0.81	-0.74	-1.47
4,181.0	12.10	68.60	4,102.8	265.1	687.0	-170.8	0.74	-0.73	0.52
4,277.0	11.30	68.10	4,196.9	272.3	705.1	-175.5	0.84	-0.83	-0.52
4,372.0	12.50	69.00	4,289.8	279.4	723.4	-180.2	1.28	1.26	0.95
4,468.0	11.50	67.70	4,383.7	286.8	741.9	-185.0	1.08	-1.04	-1.35
4,563.0	12.30	68.60	4,476.7	294.1	760.1	-189.8	0.86	0.84	0.95
4,659.0	11.00	70.70	4,570.7	300.8	778.3	-194.1	1.42	-1.35	2.19
4,755.0	10.90	68.60	4,664.9	307.2	795.4	-198.1	0.43	-0.10	-2.19
4,850.0	10.00	68.80	4,758.4	313.4	811.4	-202.1	0.95	-0.95	0.21
4,946.0	9.80	69.30	4,852.9	319.3	826.8	-205.9	0.23	-0.21	0.52
5,042.0	10.90	69.20	4,947.4	325.5	843.0	-209.8	1.15	1.15	-0.10
5,137.0	10.50	70.00	5,040.7	331.6	859.5	-213.7	0.45	-0.42	0.84

Company:	PDC Energy Inc. DJ Basin	Local Co-ordinate Reference:	Well Ehrlich 5M-343
Project:	SEC.5-T5N-R64W	TVD Reference:	WELL @ 4664.0ft (Ensign Rig #158 - RKB - 23')
Site:	Ehrlich 5N64W5J Pad Sec.5-T5N-R64W	MD Reference:	WELL @ 4664.0ft (Ensign Rig #158 - RKB - 23')
Well:	Ehrlich 5M-343	North Reference:	True
Wellbore:	Wellbore #1	Survey Calculation Method:	Minimum Curvature
Design:	Wellbore #1	Database:	US_EDM

Survey									
Measured Depth (ft)	Inclination (°)	Azimuth (°)	Vertical Depth (ft)	+N/-S (ft)	+E/-W (ft)	Vertical Section (ft)	Dogleg Rate (°/100usft)	Build Rate (°/100usft)	Turn Rate (°/100usft)
5,233.0	8.90	67.70	5,135.3	337.4	874.6	-217.4	1.71	-1.67	-2.40
5,329.0	7.90	64.10	5,230.3	343.1	887.4	-221.4	1.18	-1.04	-3.75
5,425.0	7.10	64.10	5,325.5	348.6	898.7	-225.3	0.83	-0.83	0.00
5,521.0	6.20	64.80	5,420.8	353.4	908.7	-228.7	0.94	-0.94	0.73
5,617.0	5.90	60.90	5,516.3	358.0	917.7	-232.0	0.53	-0.31	-4.06
5,712.0	4.30	58.30	5,610.9	362.2	925.0	-235.3	1.70	-1.68	-2.74
5,808.0	2.60	52.80	5,706.8	365.5	929.8	-237.8	1.80	-1.77	-5.73
5,903.0	2.40	74.80	5,801.7	367.3	933.4	-239.1	1.03	-0.21	23.16
5,999.0	1.80	47.20	5,897.6	368.8	936.5	-240.3	1.21	-0.63	-28.75
6,095.0	0.60	68.10	5,993.6	370.0	938.0	-241.3	1.31	-1.25	21.77
6,220.0	4.00	184.30	6,118.5	365.9	938.3	-237.2	3.44	2.72	92.96
6,316.0	12.90	178.80	6,213.3	351.9	938.3	-223.2	9.30	9.27	-5.73
6,412.0	16.20	178.70	6,306.3	327.7	938.8	-199.2	3.44	3.44	-0.10
6,507.0	23.30	180.10	6,395.6	295.7	939.1	-167.4	7.49	7.47	1.47
6,603.0	31.50	185.70	6,480.8	251.6	936.6	-124.1	8.94	8.54	5.83
6,699.0	40.60	182.50	6,558.3	195.4	932.7	-68.9	9.68	9.48	-3.33
6,796.0	47.20	180.10	6,628.2	128.2	931.3	-2.5	7.02	6.80	-2.47
6,891.0	53.30	177.10	6,688.9	55.2	933.1	70.1	6.86	6.42	-3.16
6,986.0	61.80	175.50	6,739.8	-24.7	938.3	150.0	9.06	8.95	-1.68
7,056.9	69.26	174.97	6,769.2	-89.0	943.7	214.4	10.54	10.52	-0.74
Crosses 460' Setback - 460'FNL & 2042'FWL, SEC.5									
7,082.0	71.90	174.80	6,777.5	-112.6	945.8	238.0	10.54	10.52	-0.69
7,130.0	77.00	175.70	6,790.4	-158.6	949.6	284.2	10.78	10.63	1.88
7,178.0	80.40	176.60	6,799.8	-205.6	952.8	331.2	7.32	7.08	1.88
7,226.0	82.90	177.60	6,806.8	-253.0	955.2	378.5	5.60	5.21	2.08
7,274.0	85.30	179.20	6,811.7	-300.7	956.5	426.0	6.00	5.00	3.33
7,369.0	87.30	179.50	6,817.8	-395.5	957.6	520.0	2.13	2.11	0.32
7,464.0	89.30	179.90	6,820.7	-490.5	958.1	614.2	2.15	2.11	0.42
7,560.0	89.30	180.90	6,821.8	-586.5	957.4	709.3	1.04	0.00	1.04
7,655.0	89.50	180.40	6,822.8	-681.5	956.4	803.2	0.57	0.21	-0.53
Deepest TVD Drilled - 6822.82' TVD									
7,751.0	90.90	180.60	6,822.5	-777.5	955.5	898.3	1.47	1.46	0.21
7,846.0	91.10	180.20	6,820.8	-872.4	954.9	992.3	0.47	0.21	-0.42
7,942.0	91.90	179.90	6,818.3	-968.4	954.8	1,087.4	0.89	0.83	-0.31
8,038.0	90.30	180.90	6,816.5	-1,064.4	954.1	1,182.4	1.97	-1.67	1.04
8,133.0	91.30	180.80	6,815.1	-1,159.4	952.7	1,276.4	1.06	1.05	-0.11
8,229.0	90.10	179.50	6,814.0	-1,255.3	952.4	1,371.4	1.84	-1.25	-1.35
8,325.0	90.60	179.70	6,813.4	-1,351.3	953.1	1,466.7	0.56	0.52	0.21
8,421.0	90.30	180.70	6,812.6	-1,447.3	952.8	1,561.8	1.09	-0.31	1.04
8,516.0	91.20	180.80	6,811.4	-1,542.3	951.5	1,655.7	0.95	0.95	0.11
8,612.0	90.00	180.90	6,810.4	-1,638.3	950.1	1,750.7	1.25	-1.25	0.10
8,707.0	90.70	180.60	6,809.8	-1,733.3	948.9	1,844.6	0.80	0.74	-0.32
8,803.0	91.40	180.80	6,808.0	-1,829.3	947.7	1,939.6	0.76	0.73	0.21

Company:	PDC Energy Inc. DJ Basin	Local Co-ordinate Reference:	Well Ehrlich 5M-343
Project:	SEC.5-T5N-R64W	TVD Reference:	WELL @ 4664.0ft (Ensign Rig #158 - RKB - 23')
Site:	Ehrlich 5N64W5J Pad Sec.5-T5N-R64W	MD Reference:	WELL @ 4664.0ft (Ensign Rig #158 - RKB - 23')
Well:	Ehrlich 5M-343	North Reference:	True
Wellbore:	Wellbore #1	Survey Calculation Method:	Minimum Curvature
Design:	Wellbore #1	Database:	US_EDM

Survey									
Measured Depth (ft)	Inclination (°)	Azimuth (°)	Vertical Depth (ft)	+N/-S (ft)	+E/-W (ft)	Vertical Section (ft)	Dogleg Rate (°/100usft)	Build Rate (°/100usft)	Turn Rate (°/100usft)
8,899.0	90.00	180.20	6,806.9	-1,925.3	946.9	2,034.6	1.59	-1.46	-0.63
8,995.0	90.50	179.90	6,806.5	-2,021.3	946.8	2,129.7	0.61	0.52	-0.31
9,090.0	90.20	180.20	6,805.9	-2,116.2	946.7	2,223.8	0.45	-0.32	0.32
9,186.0	90.20	180.60	6,805.5	-2,212.2	946.0	2,318.9	0.42	0.00	0.42
9,282.0	90.40	180.80	6,805.0	-2,308.2	944.8	2,413.9	0.29	0.21	0.21
9,377.0	90.90	180.80	6,804.0	-2,403.2	943.5	2,507.8	0.53	0.53	0.00
9,473.0	89.90	180.60	6,803.3	-2,499.2	942.3	2,602.8	1.06	-1.04	-0.21
9,569.0	90.70	180.60	6,802.8	-2,595.2	941.3	2,697.8	0.83	0.83	0.00
9,664.0	91.50	180.60	6,801.0	-2,690.2	940.3	2,791.8	0.84	0.84	0.00
9,760.0	89.60	180.20	6,800.0	-2,786.2	939.7	2,886.8	2.02	-1.98	-0.42
9,856.0	90.30	180.60	6,800.1	-2,882.2	939.0	2,981.9	0.84	0.73	0.42
9,952.0	91.20	180.60	6,798.9	-2,978.2	938.0	3,076.8	0.94	0.94	0.00
10,048.0	89.80	179.70	6,798.0	-3,074.1	937.8	3,171.9	1.73	-1.46	-0.94
10,143.0	90.00	179.90	6,798.2	-3,169.1	938.1	3,266.1	0.30	0.21	0.21
10,239.0	90.20	179.70	6,798.0	-3,265.1	938.4	3,361.3	0.29	0.21	-0.21
10,335.0	90.80	179.90	6,797.2	-3,361.1	938.8	3,456.5	0.66	0.63	0.21
10,430.0	91.20	179.90	6,795.5	-3,456.1	938.9	3,550.6	0.42	0.42	0.00
10,526.0	88.90	179.40	6,795.4	-3,552.1	939.5	3,645.9	2.45	-2.40	-0.52
10,622.0	90.00	179.50	6,796.4	-3,648.1	940.4	3,741.1	1.15	1.15	0.10
10,718.0	89.80	178.80	6,796.5	-3,744.1	941.8	3,836.4	0.76	-0.21	-0.73
10,813.0	90.70	179.00	6,796.1	-3,839.1	943.7	3,930.8	0.97	0.95	0.21
10,909.0	91.60	179.00	6,794.2	-3,935.0	945.3	4,026.1	0.94	0.94	0.00
11,005.0	91.40	180.20	6,791.7	-4,031.0	946.0	4,121.3	1.27	-0.21	1.25
11,100.0	92.10	179.70	6,788.8	-4,126.0	946.1	4,215.4	0.91	0.74	-0.53
11,196.0	91.10	180.40	6,786.1	-4,221.9	946.0	4,310.5	1.27	-1.04	0.73
11,291.0	90.30	180.40	6,784.9	-4,316.9	945.4	4,404.6	0.84	-0.84	0.00
11,387.0	91.00	179.90	6,783.9	-4,412.9	945.1	4,499.7	0.90	0.73	-0.52
11,482.0	89.90	180.40	6,783.1	-4,507.9	944.9	4,593.8	1.27	-1.16	0.53
11,578.0	90.90	180.20	6,782.4	-4,603.9	944.4	4,688.8	1.06	1.04	-0.21
11,673.0	91.70	179.90	6,780.3	-4,698.9	944.3	4,782.9	0.90	0.84	-0.32
11,769.0	90.00	180.10	6,778.9	-4,794.8	944.3	4,878.1	1.78	-1.77	0.21
11,864.0	90.10	179.90	6,778.8	-4,889.8	944.3	4,972.2	0.24	0.11	-0.21
11,960.0	89.90	179.00	6,778.8	-4,985.8	945.2	5,067.5	0.96	-0.21	-0.94
12,056.0	89.70	179.00	6,779.1	-5,081.8	946.9	5,162.8	0.21	-0.21	0.00
12,151.0	91.00	180.40	6,778.5	-5,176.8	947.4	5,257.0	2.01	1.37	1.47
12,247.0	91.30	180.60	6,776.6	-5,272.8	946.5	5,352.0	0.38	0.31	0.21
12,343.0	91.00	179.70	6,774.7	-5,368.8	946.3	5,447.1	0.99	-0.31	-0.94
12,438.0	91.00	180.80	6,773.0	-5,463.8	945.9	5,541.2	1.16	0.00	1.16
12,534.0	91.00	180.40	6,771.3	-5,559.7	944.9	5,636.2	0.42	0.00	-0.42
12,629.0	91.20	179.90	6,769.5	-5,654.7	944.6	5,730.3	0.57	0.21	-0.53
12,725.0	90.20	180.40	6,768.3	-5,750.7	944.4	5,825.3	1.16	-1.04	0.52
12,821.0	90.30	179.90	6,767.9	-5,846.7	944.1	5,920.5	0.53	0.10	-0.52
12,916.0	90.20	179.20	6,767.5	-5,941.7	944.8	6,014.7	0.74	-0.11	-0.74
13,012.0	89.80	180.40	6,767.5	-6,037.7	945.2	6,109.9	1.32	-0.42	1.25

Company:	PDC Energy Inc. DJ Basin	Local Co-ordinate Reference:	Well Ehrlich 5M-343
Project:	SEC.5-T5N-R64W	TVD Reference:	WELL @ 4664.0ft (Ensign Rig #158 - RKB - 23')
Site:	Ehrlich 5N64W5J Pad Sec.5-T5N-R64W	MD Reference:	WELL @ 4664.0ft (Ensign Rig #158 - RKB - 23')
Well:	Ehrlich 5M-343	North Reference:	True
Wellbore:	Wellbore #1	Survey Calculation Method:	Minimum Curvature
Design:	Wellbore #1	Database:	US_EDM

Survey									
Measured Depth (ft)	Inclination (°)	Azimuth (°)	Vertical Depth (ft)	+N/-S (ft)	+E/-W (ft)	Vertical Section (ft)	Dogleg Rate (°/100usft)	Build Rate (°/100usft)	Turn Rate (°/100usft)
13,108.0	90.70	180.40	6,767.1	-6,133.7	944.5	6,204.9	0.94	0.94	0.00
13,203.0	90.50	179.90	6,766.1	-6,228.7	944.3	6,299.0	0.57	-0.21	-0.53
13,298.0	90.50	179.40	6,765.3	-6,323.7	944.8	6,393.2	0.53	0.00	-0.53
13,394.0	90.80	179.70	6,764.2	-6,419.7	945.6	6,488.5	0.44	0.31	0.31
13,490.0	91.00	179.00	6,762.7	-6,515.7	946.7	6,583.7	0.76	0.21	-0.73
13,586.0	89.90	179.90	6,761.9	-6,611.7	947.6	6,679.0	1.48	-1.15	0.94
13,682.0	90.70	179.70	6,761.4	-6,707.6	947.9	6,774.2	0.86	0.83	-0.21
13,777.0	90.70	179.20	6,760.3	-6,802.6	948.9	6,868.4	0.53	0.00	-0.53
13,882.0	90.90	179.20	6,758.8	-6,907.6	950.3	6,972.7	0.19	0.19	0.00
13,937.0	90.90	179.20	6,757.9	-6,962.6	951.1	7,027.3	0.00	0.00	0.00

Design Targets									
Target Name	Dip Angle (°)	Dip Dir. (°)	TVD (ft)	+N/-S (ft)	+E/-W (ft)	Northing (usft)	Easting (usft)	Latitude	Longitude
- hit/miss target									
- Shape									
SHL 371'FNL, 1098'FWL	0.00	0.00	1.0	0.0	0.0	1,402,345.70	3,256,234.61	40.434190	-104.579501
- survey hits target center									
- Point									
BHL 2130'FNL, 2080'FWL	0.00	0.00	6,760.0	-6,963.8	939.8	1,395,392.27	3,257,246.61	40.415075	-104.576126
- survey misses target center by 11.5ft at 13937.0ft MD (6757.9 TVD, -6962.6 N, 951.1 E)									
- Point									

Survey Annotations				
Measured Depth (ft)	Vertical Depth (ft)	Local Coordinates		Comment
		+N/-S (ft)	+E/-W (ft)	
7,056.9	6,769.2	-89.0	943.7	Crosses 460' Setback - 460'FNL & 2042'FWL, SEC.5
7,655.0	6,822.8	-681.5	956.4	Deepest TVD Drilled - 6822.82' TVD

Checked By: _____	Approved By: _____	Date: _____
-------------------	--------------------	-------------