

SRC ENERGY

WELD COUNTY (NAD83, TRUE NORTH)

5N-66W-07 BOST FARM 5-7 PAD

BOST FARM 4C-11-L2

Wellbore #1

Plan: Design #1

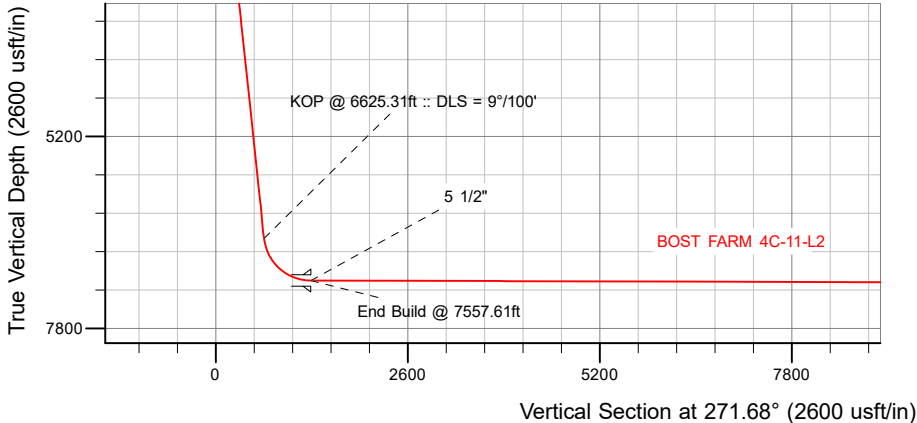
Standard Planning Report

28 December, 2017

Wellbore: Wellbore #1
Design: Design #1

SRC ENERGY

CASING DETAILS			
TVD	MD	Name	Size
1750.00	1759.02	9 5/8"	9-5/8
7152.00	7557.61	5 1/2"	5-1/2

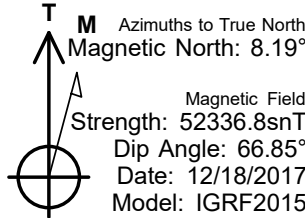
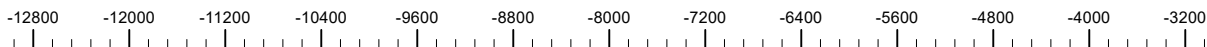


SECTION DETAILS										
Sec	MD	Inc	Azi	TVD	+N/-S	+E/-W	Dleg	TFace	V Sect	Target
1	0.00	0.00	0.00	0.00	0.00	0.00	0.00	0.00	0.00	
2	250.00	0.00	0.00	250.00	0.00	0.00	0.00	0.00	0.00	
3	590.00	6.80	299.00	589.20	9.77	-17.63	2.00	299.00	17.91	
4	6625.31	6.80	299.00	6582.06	356.22	-642.63	0.00	0.00	652.82	
5	7557.61	89.83	269.65	7152.00	385.59	-1274.17	9.00	-29.53	1284.94	
6	17376.19	89.83	269.65	7181.00	325.99	-11092.52	0.00	0.00	1097.31	BOST FARM 4C-11-L2_BHL

Name	WELLBORE TARGET DETAILS (LAT/LONG)				
	TVD	+N/-S	+E/-W	Latitude	Longitude
BOST FARM 4C-11-L2_SHL	0.00	0.00	0.00	40.417752	-104.828364
BOST FARM 4C-11-L2_BHL	7181.00	325.99	-11092.52	40.418640	-104.868203

SHL	LP	BHL
1375' FNL	1015' FNL	967' FNL
1121' FWL	150' FEL	460' FWL
	40.418781° Lat	
	-104.832934° Long	

West(-)/East(+) (1600 usft/in)



WELL DETAILS: BOST FARM 4C-11-L2

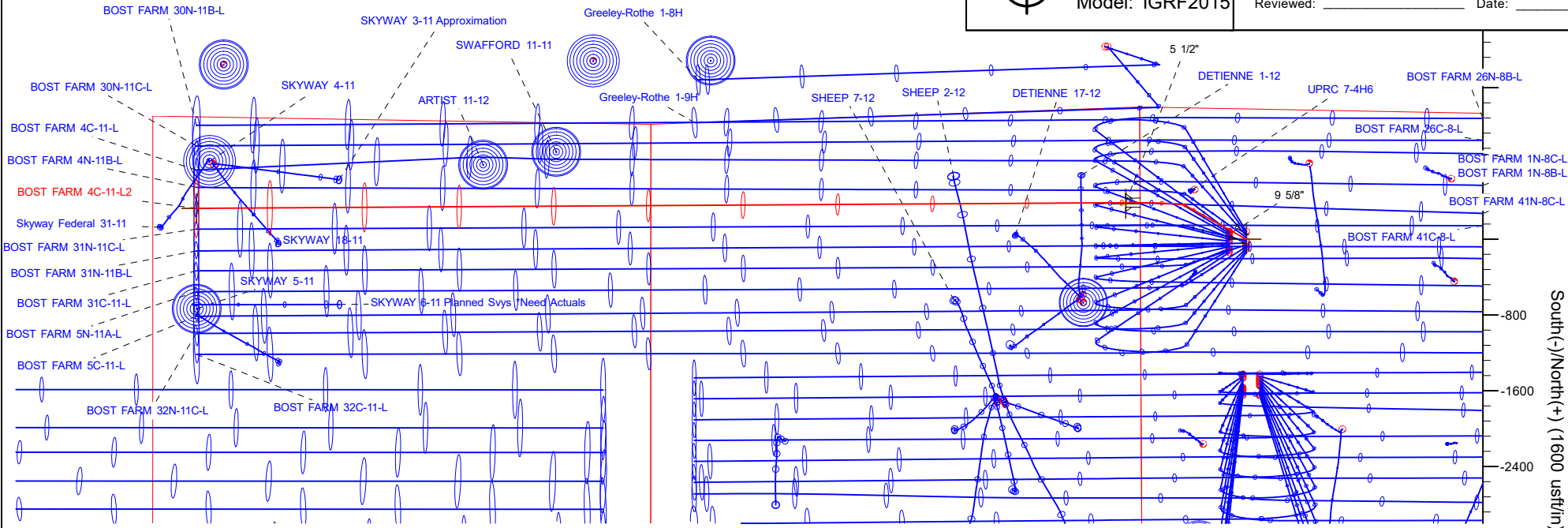
GL = 4878'

RKB = 20' @ 4898.00usft (PD 462)

Plan: Design #1 (BOST FARM 4C-11-L2/Wellbore #1)

Created By: _____ Date: 12/28/2017

Reviewed: _____ Date: _____



Hewlett-Packard

Planning Report

Database:	EDM 5000.14 Single User Db	Local Co-ordinate Reference:	Well BOST FARM 4C-11-L2
Company:	SRC ENERGY	TVD Reference:	RKB = 20' @ 4898.00usft (PD 462)
Project:	WELD COUNTY (NAD83, TRUE NORTH)	MD Reference:	RKB = 20' @ 4898.00usft (PD 462)
Site:	5N-66W-07 BOST FARM 5-7 PAD	North Reference:	True
Well:	BOST FARM 4C-11-L2	Survey Calculation Method:	Minimum Curvature
Wellbore:	Wellbore #1		
Design:	Design #1		

Project	WELD COUNTY (NAD83, TRUE NORTH)		
Map System:	US State Plane 1983	System Datum:	Mean Sea Level
Geo Datum:	North American Datum 1983		
Map Zone:	Colorado Northern Zone		

Site	5N-66W-07 BOST FARM 5-7 PAD			
Site Position:		Northing:	1,395,815.76 usft	Latitude: 40.417972
From:	Lat/Long	Easting:	3,187,006.76 usft	Longitude: -104.828362
Position Uncertainty:	0.00 usft	Slot Radius:	13-3/16 "	Grid Convergence: 0.43 °

Well	BOST FARM 4C-11-L2			
Well Position	+N/-S	-80.15 usft	Northing:	1,395,735.61 usft
	+E/-W	-0.56 usft	Easting:	3,187,006.81 usft
Position Uncertainty		3.28 usft	Wellhead Elevation:	Latitude: 40.417752
				Longitude: -104.828364
				Ground Level: 4,878.00 usft

Wellbore	Wellbore #1				
Magnetics	Model Name	Sample Date	Declination (°)	Dip Angle (°)	Field Strength (nT)
	IGRF2015	12/18/2017	8.19	66.85	52,336.84868531

Design	Design #1			
Audit Notes:				
Version:	Phase:	PLAN	Tie On Depth:	0.00
Vertical Section:	Depth From (TVD) (usft)	+N/-S (usft)	+E/-W (usft)	Direction (°)
	0.00	0.00	0.00	271.68

Plan Survey Tool Program	Date	12/27/2017		
Depth From (usft)	Depth To (usft)	Survey (Wellbore)	Tool Name	Remarks
1	0.00	1,750.00	Design #1 (Wellbore #1)	SRC Energy_ISCWSA REV 2
				Fixed:v2:crustal field declinatio
2	1,750.00	17,376.19	Design #1 (Wellbore #1)	SRC Energy_ISCWSA REV 2
				Fixed:v2:crustal field declinatio

Plan Sections										
Measured Depth (usft)	Inclination (°)	Azimuth (°)	Vertical Depth (usft)	+N/-S (usft)	+E/-W (usft)	Dogleg Rate (°/100usft)	Build Rate (°/100usft)	Turn Rate (°/100usft)	TFO (°)	Target
0.00	0.00	0.00	0.00	0.00	0.00	0.00	0.00	0.00	0.00	
250.00	0.00	0.00	250.00	0.00	0.00	0.00	0.00	0.00	0.00	
590.00	6.80	299.00	589.20	9.77	-17.63	2.00	2.00	0.00	299.00	
6,625.31	6.80	299.00	6,582.06	356.22	-642.63	0.00	0.00	0.00	0.00	
7,557.61	89.83	269.65	7,152.00	385.59	-1,274.17	9.00	8.91	-3.15	-29.53	
17,376.19	89.83	269.65	7,181.00	325.99	-11,092.52	0.00	0.00	0.00	0.00	BOST FARM 4C-11-L

Hewlett-Packard

Planning Report

Database:	EDM 5000.14 Single User Db	Local Co-ordinate Reference:	Well BOST FARM 4C-11-L2
Company:	SRC ENERGY	TVD Reference:	RKB = 20' @ 4898.00usft (PD 462)
Project:	WELD COUNTY (NAD83, TRUE NORTH)	MD Reference:	RKB = 20' @ 4898.00usft (PD 462)
Site:	5N-66W-07 BOST FARM 5-7 PAD	North Reference:	True
Well:	BOST FARM 4C-11-L2	Survey Calculation Method:	Minimum Curvature
Wellbore:	Wellbore #1		
Design:	Design #1		

Planned Survey									
Measured Depth (usft)	Inclination (°)	Azimuth (°)	Vertical Depth (usft)	+N/-S (usft)	+E/-W (usft)	Vertical Section (usft)	Dogleg Rate (°/100usft)	Build Rate (°/100usft)	Turn Rate (°/100usft)
0.00	0.00	0.00	0.00	0.00	0.00	0.00	0.00	0.00	0.00
100.00	0.00	0.00	100.00	0.00	0.00	0.00	0.00	0.00	0.00
200.00	0.00	0.00	200.00	0.00	0.00	0.00	0.00	0.00	0.00
250.00	0.00	0.00	250.00	0.00	0.00	0.00	0.00	0.00	0.00
Begin Nudge @ 250.00ft									
300.00	1.00	299.00	300.00	0.21	-0.38	0.39	2.00	2.00	0.00
400.00	3.00	299.00	399.93	1.90	-3.43	3.49	2.00	2.00	0.00
500.00	5.00	299.00	499.68	5.29	-9.53	9.69	2.00	2.00	0.00
590.00	6.80	299.00	589.20	9.77	-17.63	17.91	2.00	2.00	0.00
End Nudge @ 590.00ft									
600.00	6.80	299.00	599.13	10.34	-18.66	18.96	0.00	0.00	0.00
700.00	6.80	299.00	698.43	16.08	-29.02	29.48	0.00	0.00	0.00
800.00	6.80	299.00	797.73	21.82	-39.37	40.00	0.00	0.00	0.00
900.00	6.80	299.00	897.02	27.57	-49.73	50.52	0.00	0.00	0.00
1,000.00	6.80	299.00	996.32	33.31	-60.08	61.04	0.00	0.00	0.00
1,100.00	6.80	299.00	1,095.61	39.05	-70.44	71.56	0.00	0.00	0.00
1,200.00	6.80	299.00	1,194.91	44.79	-80.80	82.08	0.00	0.00	0.00
1,300.00	6.80	299.00	1,294.21	50.53	-91.15	92.60	0.00	0.00	0.00
1,400.00	6.80	299.00	1,393.50	56.27	-101.51	103.12	0.00	0.00	0.00
1,500.00	6.80	299.00	1,492.80	62.01	-111.86	113.64	0.00	0.00	0.00
1,600.00	6.80	299.00	1,592.10	67.75	-122.22	124.16	0.00	0.00	0.00
1,700.00	6.80	299.00	1,691.39	73.49	-132.58	134.68	0.00	0.00	0.00
1,759.02	6.80	299.00	1,750.00	76.88	-138.69	140.89	0.00	0.00	0.00
9 5/8"									
1,800.00	6.80	299.00	1,790.69	79.23	-142.93	145.20	0.00	0.00	0.00
1,900.00	6.80	299.00	1,889.99	84.97	-153.29	155.72	0.00	0.00	0.00
2,000.00	6.80	299.00	1,989.28	90.71	-163.64	166.24	0.00	0.00	0.00
2,100.00	6.80	299.00	2,088.58	96.45	-174.00	176.76	0.00	0.00	0.00
2,200.00	6.80	299.00	2,187.88	102.19	-184.35	187.28	0.00	0.00	0.00
2,300.00	6.80	299.00	2,287.17	107.93	-194.71	197.80	0.00	0.00	0.00
2,400.00	6.80	299.00	2,386.47	113.67	-205.07	208.32	0.00	0.00	0.00
2,500.00	6.80	299.00	2,485.77	119.41	-215.42	218.84	0.00	0.00	0.00
2,600.00	6.80	299.00	2,585.06	125.15	-225.78	229.36	0.00	0.00	0.00
2,700.00	6.80	299.00	2,684.36	130.89	-236.13	239.88	0.00	0.00	0.00
2,800.00	6.80	299.00	2,783.66	136.63	-246.49	250.40	0.00	0.00	0.00
2,900.00	6.80	299.00	2,882.95	142.37	-256.85	260.92	0.00	0.00	0.00
3,000.00	6.80	299.00	2,982.25	148.11	-267.20	271.44	0.00	0.00	0.00
3,100.00	6.80	299.00	3,081.55	153.85	-277.56	281.96	0.00	0.00	0.00
3,200.00	6.80	299.00	3,180.84	159.59	-287.91	292.48	0.00	0.00	0.00
3,300.00	6.80	299.00	3,280.14	165.33	-298.27	303.00	0.00	0.00	0.00
3,400.00	6.80	299.00	3,379.44	171.07	-308.62	313.52	0.00	0.00	0.00
3,500.00	6.80	299.00	3,478.73	176.81	-318.98	324.04	0.00	0.00	0.00
3,600.00	6.80	299.00	3,578.03	182.55	-329.34	334.56	0.00	0.00	0.00
3,700.00	6.80	299.00	3,677.33	188.29	-339.69	345.08	0.00	0.00	0.00
3,800.00	6.80	299.00	3,776.62	194.03	-350.05	355.60	0.00	0.00	0.00
3,900.00	6.80	299.00	3,875.92	199.78	-360.40	366.12	0.00	0.00	0.00
4,000.00	6.80	299.00	3,975.21	205.52	-370.76	376.64	0.00	0.00	0.00
4,100.00	6.80	299.00	4,074.51	211.26	-381.12	387.16	0.00	0.00	0.00
4,200.00	6.80	299.00	4,173.81	217.00	-391.47	397.68	0.00	0.00	0.00
4,300.00	6.80	299.00	4,273.10	222.74	-401.83	408.20	0.00	0.00	0.00
4,400.00	6.80	299.00	4,372.40	228.48	-412.18	418.72	0.00	0.00	0.00
4,500.00	6.80	299.00	4,471.70	234.22	-422.54	429.24	0.00	0.00	0.00
4,600.00	6.80	299.00	4,570.99	239.96	-432.89	439.76	0.00	0.00	0.00

Hewlett-Packard

Planning Report

Database:	EDM 5000.14 Single User Db	Local Co-ordinate Reference:	Well BOST FARM 4C-11-L2
Company:	SRC ENERGY	TVD Reference:	RKB = 20' @ 4898.00usft (PD 462)
Project:	WELD COUNTY (NAD83, TRUE NORTH)	MD Reference:	RKB = 20' @ 4898.00usft (PD 462)
Site:	5N-66W-07 BOST FARM 5-7 PAD	North Reference:	True
Well:	BOST FARM 4C-11-L2	Survey Calculation Method:	Minimum Curvature
Wellbore:	Wellbore #1		
Design:	Design #1		

Planned Survey									
Measured Depth (usft)	Inclination (°)	Azimuth (°)	Vertical Depth (usft)	+N/-S (usft)	+E/-W (usft)	Vertical Section (usft)	Dogleg Rate (°/100usft)	Build Rate (°/100usft)	Turn Rate (°/100usft)
4,700.00	6.80	299.00	4,670.29	245.70	-443.25	450.28	0.00	0.00	0.00
4,800.00	6.80	299.00	4,769.59	251.44	-453.61	460.80	0.00	0.00	0.00
4,900.00	6.80	299.00	4,868.88	257.18	-463.96	471.32	0.00	0.00	0.00
5,000.00	6.80	299.00	4,968.18	262.92	-474.32	481.84	0.00	0.00	0.00
5,100.00	6.80	299.00	5,067.48	268.66	-484.67	492.36	0.00	0.00	0.00
5,200.00	6.80	299.00	5,166.77	274.40	-495.03	502.88	0.00	0.00	0.00
5,300.00	6.80	299.00	5,266.07	280.14	-505.39	513.40	0.00	0.00	0.00
5,400.00	6.80	299.00	5,365.37	285.88	-515.74	523.92	0.00	0.00	0.00
5,500.00	6.80	299.00	5,464.66	291.62	-526.10	534.44	0.00	0.00	0.00
5,600.00	6.80	299.00	5,563.96	297.36	-536.45	544.96	0.00	0.00	0.00
5,700.00	6.80	299.00	5,663.26	303.10	-546.81	555.48	0.00	0.00	0.00
5,800.00	6.80	299.00	5,762.55	308.84	-557.17	566.00	0.00	0.00	0.00
5,900.00	6.80	299.00	5,861.85	314.58	-567.52	576.52	0.00	0.00	0.00
6,000.00	6.80	299.00	5,961.15	320.32	-577.88	587.04	0.00	0.00	0.00
6,100.00	6.80	299.00	6,060.44	326.06	-588.23	597.56	0.00	0.00	0.00
6,200.00	6.80	299.00	6,159.74	331.80	-598.59	608.08	0.00	0.00	0.00
6,300.00	6.80	299.00	6,259.04	337.54	-608.94	618.60	0.00	0.00	0.00
6,400.00	6.80	299.00	6,358.33	343.28	-619.30	629.12	0.00	0.00	0.00
6,500.00	6.80	299.00	6,457.63	349.02	-629.66	639.64	0.00	0.00	0.00
6,600.00	6.80	299.00	6,556.93	354.76	-640.01	650.16	0.00	0.00	0.00
6,625.31	6.80	299.00	6,582.06	356.22	-642.63	652.82	0.00	0.00	0.00
KOP @ 6625.31ft :: DLS = 9°/100'									
6,650.00	8.80	291.83	6,606.52	357.63	-645.67	655.89	9.00	8.11	-29.06
6,700.00	13.07	284.22	6,655.60	360.44	-654.70	665.01	9.00	8.54	-15.20
6,750.00	17.46	280.35	6,703.83	363.18	-667.57	677.95	9.00	8.77	-7.74
6,800.00	21.89	278.01	6,750.90	365.83	-684.19	694.64	9.00	8.86	-4.69
6,850.00	26.34	276.42	6,796.52	368.37	-704.45	714.97	9.00	8.91	-3.17
6,900.00	30.81	275.27	6,840.42	370.79	-728.24	738.82	9.00	8.93	-2.31
6,950.00	35.28	274.38	6,882.32	373.07	-755.40	766.03	9.00	8.95	-1.77
7,000.00	39.76	273.67	6,921.96	375.19	-785.77	796.46	9.00	8.96	-1.42
7,050.00	44.25	273.08	6,959.11	377.16	-819.17	829.89	9.00	8.97	-1.18
7,100.00	48.73	272.58	6,993.53	378.94	-855.37	866.14	9.00	8.97	-1.00
7,150.00	53.22	272.15	7,025.00	380.54	-894.18	904.97	9.00	8.97	-0.87
7,200.00	57.71	271.76	7,053.34	381.94	-935.33	946.14	9.00	8.98	-0.77
7,250.00	62.20	271.41	7,078.37	383.13	-978.58	989.41	9.00	8.98	-0.70
7,300.00	66.69	271.09	7,099.94	384.11	-1,023.67	1,034.51	9.00	8.98	-0.65
7,350.00	71.18	270.78	7,117.90	384.87	-1,070.31	1,081.15	9.00	8.98	-0.60
7,400.00	75.67	270.50	7,132.16	385.41	-1,118.21	1,129.05	9.00	8.98	-0.57
7,450.00	80.16	270.22	7,142.63	385.71	-1,167.09	1,177.92	9.00	8.98	-0.55
7,500.00	84.65	269.96	7,149.23	385.79	-1,216.64	1,227.45	9.00	8.98	-0.53
7,550.00	89.15	269.69	7,151.94	385.64	-1,266.55	1,277.34	9.00	8.98	-0.53
7,557.61	89.83	269.65	7,152.00	385.59	-1,274.16	1,284.94	9.00	8.98	-0.53
End Build @ 7557.61ft - 5 1/2"									
7,600.00	89.83	269.65	7,152.13	385.34	-1,316.55	1,327.30	0.00	0.00	0.00
7,700.00	89.83	269.65	7,152.42	384.73	-1,416.55	1,427.24	0.00	0.00	0.00
7,800.00	89.83	269.65	7,152.72	384.12	-1,516.55	1,527.18	0.00	0.00	0.00
7,900.00	89.83	269.65	7,153.01	383.52	-1,616.55	1,627.12	0.00	0.00	0.00
8,000.00	89.83	269.65	7,153.31	382.91	-1,716.54	1,727.05	0.00	0.00	0.00
8,100.00	89.83	269.65	7,153.61	382.30	-1,816.54	1,826.99	0.00	0.00	0.00
8,200.00	89.83	269.65	7,153.90	381.69	-1,916.54	1,926.93	0.00	0.00	0.00
8,300.00	89.83	269.65	7,154.20	381.09	-2,016.54	2,026.86	0.00	0.00	0.00
8,400.00	89.83	269.65	7,154.49	380.48	-2,116.54	2,126.80	0.00	0.00	0.00
8,500.00	89.83	269.65	7,154.79	379.87	-2,216.53	2,226.74	0.00	0.00	0.00
8,600.00	89.83	269.65	7,155.08	379.27	-2,316.53	2,326.67	0.00	0.00	0.00

Hewlett-Packard

Planning Report

Database:	EDM 5000.14 Single User Db	Local Co-ordinate Reference:	Well BOST FARM 4C-11-L2
Company:	SRC ENERGY	TVD Reference:	RKB = 20' @ 4898.00usft (PD 462)
Project:	WELD COUNTY (NAD83, TRUE NORTH)	MD Reference:	RKB = 20' @ 4898.00usft (PD 462)
Site:	5N-66W-07 BOST FARM 5-7 PAD	North Reference:	True
Well:	BOST FARM 4C-11-L2	Survey Calculation Method:	Minimum Curvature
Wellbore:	Wellbore #1		
Design:	Design #1		

Planned Survey										
Measured Depth (usft)	Inclination (°)	Azimuth (°)	Vertical Depth (usft)	+N/-S (usft)	+E/-W (usft)	Vertical Section (usft)	Dogleg Rate (°/100usft)	Build Rate (°/100usft)	Turn Rate (°/100usft)	
8,700.00	89.83	269.65	7,155.38	378.66	-2,416.53	2,426.61	0.00	0.00	0.00	
8,800.00	89.83	269.65	7,155.67	378.05	-2,516.53	2,526.55	0.00	0.00	0.00	
8,900.00	89.83	269.65	7,155.97	377.44	-2,616.52	2,626.48	0.00	0.00	0.00	
9,000.00	89.83	269.65	7,156.26	376.84	-2,716.52	2,726.42	0.00	0.00	0.00	
9,100.00	89.83	269.65	7,156.56	376.23	-2,816.52	2,826.36	0.00	0.00	0.00	
9,200.00	89.83	269.65	7,156.85	375.62	-2,916.52	2,926.29	0.00	0.00	0.00	
9,300.00	89.83	269.65	7,157.15	375.02	-3,016.51	3,026.23	0.00	0.00	0.00	
9,400.00	89.83	269.65	7,157.44	374.41	-3,116.51	3,126.17	0.00	0.00	0.00	
9,500.00	89.83	269.65	7,157.74	373.80	-3,216.51	3,226.10	0.00	0.00	0.00	
9,600.00	89.83	269.65	7,158.03	373.20	-3,316.51	3,326.04	0.00	0.00	0.00	
9,700.00	89.83	269.65	7,158.33	372.59	-3,416.51	3,425.98	0.00	0.00	0.00	
9,800.00	89.83	269.65	7,158.63	371.98	-3,516.50	3,525.91	0.00	0.00	0.00	
9,900.00	89.83	269.65	7,158.92	371.37	-3,616.50	3,625.85	0.00	0.00	0.00	
10,000.00	89.83	269.65	7,159.22	370.77	-3,716.50	3,725.79	0.00	0.00	0.00	
10,100.00	89.83	269.65	7,159.51	370.16	-3,816.50	3,825.72	0.00	0.00	0.00	
10,200.00	89.83	269.65	7,159.81	369.55	-3,916.49	3,925.66	0.00	0.00	0.00	
10,300.00	89.83	269.65	7,160.10	368.95	-4,016.49	4,025.60	0.00	0.00	0.00	
10,400.00	89.83	269.65	7,160.40	368.34	-4,116.49	4,125.53	0.00	0.00	0.00	
10,500.00	89.83	269.65	7,160.69	367.73	-4,216.49	4,225.47	0.00	0.00	0.00	
10,600.00	89.83	269.65	7,160.99	367.12	-4,316.49	4,325.41	0.00	0.00	0.00	
10,700.00	89.83	269.65	7,161.28	366.52	-4,416.48	4,425.34	0.00	0.00	0.00	
10,800.00	89.83	269.65	7,161.58	365.91	-4,516.48	4,525.28	0.00	0.00	0.00	
10,900.00	89.83	269.65	7,161.87	365.30	-4,616.48	4,625.22	0.00	0.00	0.00	
11,000.00	89.83	269.65	7,162.17	364.70	-4,716.48	4,725.15	0.00	0.00	0.00	
11,100.00	89.83	269.65	7,162.46	364.09	-4,816.47	4,825.09	0.00	0.00	0.00	
11,200.00	89.83	269.65	7,162.76	363.48	-4,916.47	4,925.03	0.00	0.00	0.00	
11,300.00	89.83	269.65	7,163.06	362.88	-5,016.47	5,024.96	0.00	0.00	0.00	
11,400.00	89.83	269.65	7,163.35	362.27	-5,116.47	5,124.90	0.00	0.00	0.00	
11,500.00	89.83	269.65	7,163.65	361.66	-5,216.46	5,224.84	0.00	0.00	0.00	
11,600.00	89.83	269.65	7,163.94	361.05	-5,316.46	5,324.77	0.00	0.00	0.00	
11,700.00	89.83	269.65	7,164.24	360.45	-5,416.46	5,424.71	0.00	0.00	0.00	
11,800.00	89.83	269.65	7,164.53	359.84	-5,516.46	5,524.65	0.00	0.00	0.00	
11,900.00	89.83	269.65	7,164.83	359.23	-5,616.46	5,624.58	0.00	0.00	0.00	
12,000.00	89.83	269.65	7,165.12	358.63	-5,716.45	5,724.52	0.00	0.00	0.00	
12,100.00	89.83	269.65	7,165.42	358.02	-5,816.45	5,824.46	0.00	0.00	0.00	
12,200.00	89.83	269.65	7,165.71	357.41	-5,916.45	5,924.39	0.00	0.00	0.00	
12,300.00	89.83	269.65	7,166.01	356.80	-6,016.45	6,024.33	0.00	0.00	0.00	
12,400.00	89.83	269.65	7,166.30	356.20	-6,116.44	6,124.27	0.00	0.00	0.00	
12,500.00	89.83	269.65	7,166.60	355.59	-6,216.44	6,224.20	0.00	0.00	0.00	
12,600.00	89.83	269.65	7,166.89	354.98	-6,316.44	6,324.14	0.00	0.00	0.00	
12,700.00	89.83	269.65	7,167.19	354.38	-6,416.44	6,424.08	0.00	0.00	0.00	
12,800.00	89.83	269.65	7,167.49	353.77	-6,516.44	6,524.02	0.00	0.00	0.00	
12,900.00	89.83	269.65	7,167.78	353.16	-6,616.43	6,623.95	0.00	0.00	0.00	
13,000.00	89.83	269.65	7,168.08	352.56	-6,716.43	6,723.89	0.00	0.00	0.00	
13,100.00	89.83	269.65	7,168.37	351.95	-6,816.43	6,823.83	0.00	0.00	0.00	
13,200.00	89.83	269.65	7,168.67	351.34	-6,916.43	6,923.76	0.00	0.00	0.00	
13,300.00	89.83	269.65	7,168.96	350.73	-7,016.42	7,023.70	0.00	0.00	0.00	
13,400.00	89.83	269.65	7,169.26	350.13	-7,116.42	7,123.64	0.00	0.00	0.00	
13,500.00	89.83	269.65	7,169.55	349.52	-7,216.42	7,223.57	0.00	0.00	0.00	
13,600.00	89.83	269.65	7,169.85	348.91	-7,316.42	7,323.51	0.00	0.00	0.00	
13,700.00	89.83	269.65	7,170.14	348.31	-7,416.41	7,423.45	0.00	0.00	0.00	
13,800.00	89.83	269.65	7,170.44	347.70	-7,516.41	7,523.38	0.00	0.00	0.00	
13,900.00	89.83	269.65	7,170.73	347.09	-7,616.41	7,623.32	0.00	0.00	0.00	
14,000.00	89.83	269.65	7,171.03	346.48	-7,716.41	7,723.26	0.00	0.00	0.00	

Hewlett-Packard

Planning Report

Database:	EDM 5000.14 Single User Db	Local Co-ordinate Reference:	Well BOST FARM 4C-11-L2
Company:	SRC ENERGY	TVD Reference:	RKB = 20' @ 4898.00usft (PD 462)
Project:	WELD COUNTY (NAD83, TRUE NORTH)	MD Reference:	RKB = 20' @ 4898.00usft (PD 462)
Site:	5N-66W-07 BOST FARM 5-7 PAD	North Reference:	True
Well:	BOST FARM 4C-11-L2	Survey Calculation Method:	Minimum Curvature
Wellbore:	Wellbore #1		
Design:	Design #1		

Planned Survey										
Measured Depth (usft)	Inclination (°)	Azimuth (°)	Vertical Depth (usft)	+N/-S (usft)	+E/-W (usft)	Vertical Section (usft)	Dogleg Rate (°/100usft)	Build Rate (°/100usft)	Turn Rate (°/100usft)	
14,100.00	89.83	269.65	7,171.32	345.88	-7,816.41	7,823.19	0.00	0.00	0.00	
14,200.00	89.83	269.65	7,171.62	345.27	-7,916.40	7,923.13	0.00	0.00	0.00	
14,300.00	89.83	269.65	7,171.92	344.66	-8,016.40	8,023.07	0.00	0.00	0.00	
14,400.00	89.83	269.65	7,172.21	344.06	-8,116.40	8,123.00	0.00	0.00	0.00	
14,500.00	89.83	269.65	7,172.51	343.45	-8,216.40	8,222.94	0.00	0.00	0.00	
14,600.00	89.83	269.65	7,172.80	342.84	-8,316.39	8,322.88	0.00	0.00	0.00	
14,700.00	89.83	269.65	7,173.10	342.23	-8,416.39	8,422.81	0.00	0.00	0.00	
14,800.00	89.83	269.65	7,173.39	341.63	-8,516.39	8,522.75	0.00	0.00	0.00	
14,900.00	89.83	269.65	7,173.69	341.02	-8,616.39	8,622.69	0.00	0.00	0.00	
15,000.00	89.83	269.65	7,173.98	340.41	-8,716.39	8,722.62	0.00	0.00	0.00	
15,100.00	89.83	269.65	7,174.28	339.81	-8,816.38	8,822.56	0.00	0.00	0.00	
15,200.00	89.83	269.65	7,174.57	339.20	-8,916.38	8,922.50	0.00	0.00	0.00	
15,300.00	89.83	269.65	7,174.87	338.59	-9,016.38	9,022.43	0.00	0.00	0.00	
15,400.00	89.83	269.65	7,175.16	337.99	-9,116.38	9,122.37	0.00	0.00	0.00	
15,500.00	89.83	269.65	7,175.46	337.38	-9,216.37	9,222.31	0.00	0.00	0.00	
15,600.00	89.83	269.65	7,175.75	336.77	-9,316.37	9,322.24	0.00	0.00	0.00	
15,700.00	89.83	269.65	7,176.05	336.16	-9,416.37	9,422.18	0.00	0.00	0.00	
15,800.00	89.83	269.65	7,176.35	335.56	-9,516.37	9,522.12	0.00	0.00	0.00	
15,900.00	89.83	269.65	7,176.64	334.95	-9,616.36	9,622.05	0.00	0.00	0.00	
16,000.00	89.83	269.65	7,176.94	334.34	-9,716.36	9,721.99	0.00	0.00	0.00	
16,100.00	89.83	269.65	7,177.23	333.74	-9,816.36	9,821.93	0.00	0.00	0.00	
16,200.00	89.83	269.65	7,177.53	333.13	-9,916.36	9,921.86	0.00	0.00	0.00	
16,300.00	89.83	269.65	7,177.82	332.52	-10,016.36	10,021.80	0.00	0.00	0.00	
16,400.00	89.83	269.65	7,178.12	331.91	-10,116.35	10,121.74	0.00	0.00	0.00	
16,500.00	89.83	269.65	7,178.41	331.31	-10,216.35	10,221.67	0.00	0.00	0.00	
16,600.00	89.83	269.65	7,178.71	330.70	-10,316.35	10,321.61	0.00	0.00	0.00	
16,700.00	89.83	269.65	7,179.00	330.09	-10,416.35	10,421.55	0.00	0.00	0.00	
16,800.00	89.83	269.65	7,179.30	329.49	-10,516.34	10,521.48	0.00	0.00	0.00	
16,900.00	89.83	269.65	7,179.59	328.88	-10,616.34	10,621.42	0.00	0.00	0.00	
17,000.00	89.83	269.65	7,179.89	328.27	-10,716.34	10,721.36	0.00	0.00	0.00	
17,100.00	89.83	269.65	7,180.18	327.67	-10,816.34	10,821.29	0.00	0.00	0.00	
17,200.00	89.83	269.65	7,180.48	327.06	-10,916.34	10,921.23	0.00	0.00	0.00	
17,300.00	89.83	269.65	7,180.78	326.45	-11,016.33	11,021.17	0.00	0.00	0.00	
17,376.19	89.83	269.65	7,181.00	325.99	-11,092.52	11,097.31	0.00	0.00	0.00	
TD Well @ 17376.19ft										

Casing Points					
Measured Depth (usft)	Vertical Depth (usft)	Name		Casing Diameter (")	Hole Diameter (")
1,759.02	1,750.00	9 5/8"		9-5/8	13-1/2
7,557.61	7,152.00	5 1/2"		5-1/2	8-1/2

Hewlett-Packard

Planning Report

Database:	EDM 5000.14 Single User Db	Local Co-ordinate Reference:	Well BOST FARM 4C-11-L2
Company:	SRC ENERGY	TVD Reference:	RKB = 20' @ 4898.00usft (PD 462)
Project:	WELD COUNTY (NAD83, TRUE NORTH)	MD Reference:	RKB = 20' @ 4898.00usft (PD 462)
Site:	5N-66W-07 BOST FARM 5-7 PAD	North Reference:	True
Well:	BOST FARM 4C-11-L2	Survey Calculation Method:	Minimum Curvature
Wellbore:	Wellbore #1		
Design:	Design #1		

Plan Annotations					
Measured Depth (usft)	Vertical Depth (usft)	Local Coordinates		Comment	
		+N/-S (usft)	+E/-W (usft)		
250.00	250.00	0.00	0.00	Begin Nudge @ 250.00ft	
590.00	589.20	9.77	-17.63	End Nudge @ 590.00ft	
6,625.31	6,582.06	356.22	-642.63	KOP @ 6625.31ft :: DLS = 9°/100'	
7,557.61	7,152.00	385.59	-1,274.17	End Build @ 7557.61ft	
17,376.19	7,181.00	325.99	-11,092.52	TD Well @ 17376.19ft	