

SRC ENERGY

WELD COUNTY (NAD83, TRUE NORTH)

5N-66W-07 BOST FARM 5-7 PAD

BOST FARM 30N-11B-L

Wellbore #1

Plan: Design #1

Standard Planning Report

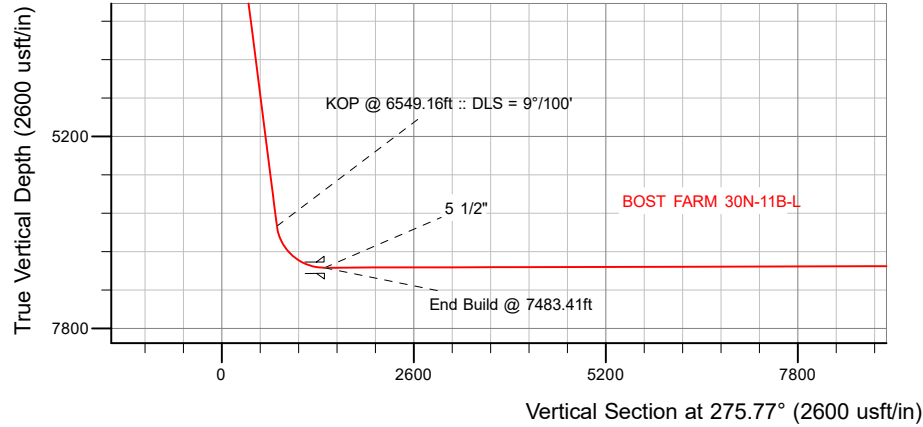
28 December, 2017

Project: WELD COUNTY (NAD83, TRUE NORTH)
Site: 5N-66W-07 BOST FARM 5-7 PAD
Well: BOST FARM 30N-11B-L
Wellbore: Wellbore #1
Design: Design #1

SRC ENERGY

CASING DETAILS

TVD	MD	Name	Size
1750.00	1774.92	9 5/8"	9-5/8
6978.00	7483.41	5 1/2"	5-1/2



SECTION DETAILS

Sec	MD	Inc	Azi	TVD	+N-S	+E-W	Dleg	TFace	VSec	Target
1	0.00	0.00	0.00	0.00	0.00	0.00	0.00	0.00	0.00	
2	250.00	0.00	0.00	250.00	0.00	0.00	0.00	0.00	0.00	
3	855.00	12.10	329.40	850.51	54.78	-32.40	2.00	329.40	37.74	
4	6549.16	12.10	329.40	6418.17	1082.17	-639.99	0.00	0.00	745.60	
5	7483.41	90.15	269.65	6978.00	1182.20	-1275.28	9.00	-60.28	1387.72	
6	17301.59	90.15	269.65	6953.00	1121.62	-11093.24	0.00	0.00	1149.80	BOST FARM 30N-11B-L_BHL

WELLBORE TARGET DETAILS (LAT/LONG)

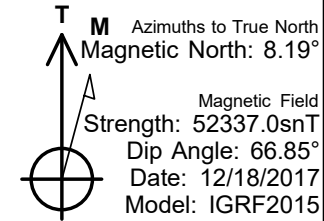
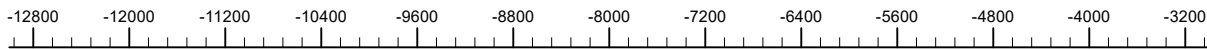
Name	TVD	+N-S	+E-W	Latitude	Longitude
BOST FARM 30N-11B-L_SHL	0.00	0.00	0.00	40.417972	-104.828362
BOST FARM 30N-11B-L_BHL	6953.00	1121.62	-11093.24	40.421044	-104.868205

SHL
1295' FNL
1122' FWL

LP
135' FNL
150' FEL
40.421198° Lat
-104.832950° Long

BHL
91' FNL
460' FWL

West(-)/East(+) (1600 usft/in)



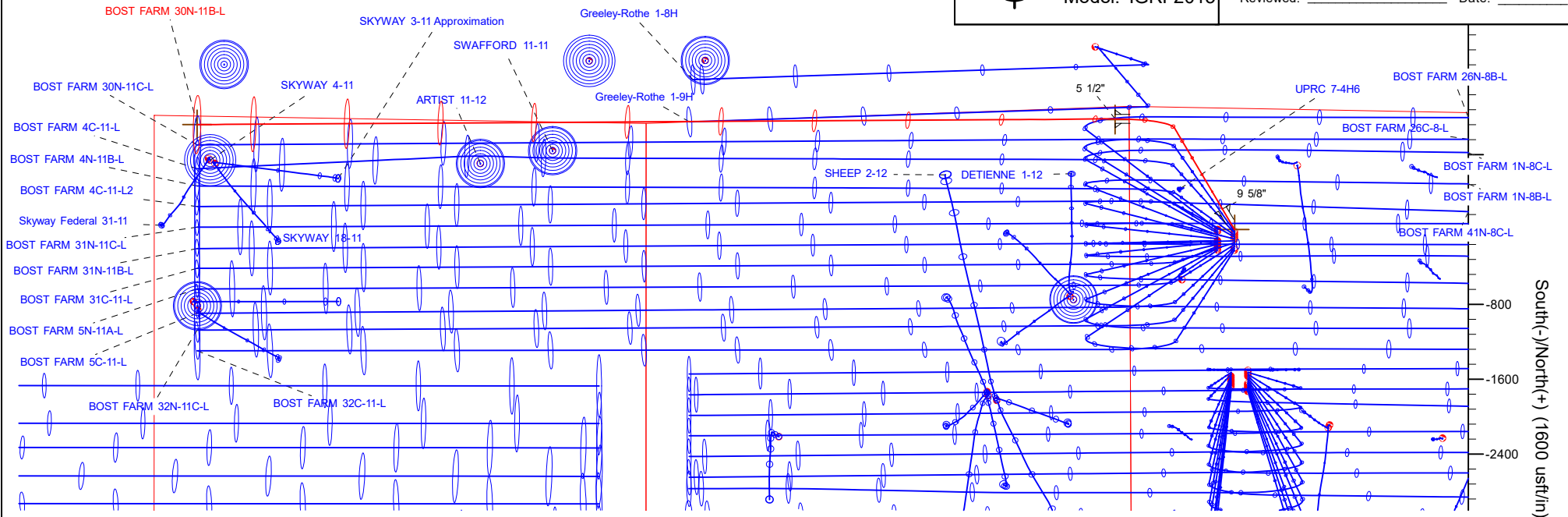
WELL DETAILS: BOST FARM 30N-11B-L

GL = 4878'

RKB = 20' @ 4898.00usft (PD 462)

Plan: Design #1 (BOST FARM 30N-11B-L/Wellbore #1)

Created By: _____ Date: 12/28/2017
Reviewed: _____ Date: _____



Hewlett-Packard

Planning Report

Database:	EDM 5000.14 Single User Db	Local Co-ordinate Reference:	Well BOST FARM 30N-11B-L
Company:	SRC ENERGY	TVD Reference:	RKB = 20' @ 4898.00usft (PD 462)
Project:	WELD COUNTY (NAD83, TRUE NORTH)	MD Reference:	RKB = 20' @ 4898.00usft (PD 462)
Site:	5N-66W-07 BOST FARM 5-7 PAD	North Reference:	True
Well:	BOST FARM 30N-11B-L	Survey Calculation Method:	Minimum Curvature
Wellbore:	Wellbore #1		
Design:	Design #1		

Project	WELD COUNTY (NAD83, TRUE NORTH)		
Map System:	US State Plane 1983	System Datum:	Mean Sea Level
Geo Datum:	North American Datum 1983		
Map Zone:	Colorado Northern Zone		

Site	5N-66W-07 BOST FARM 5-7 PAD			
Site Position:		Northing:	1,395,815.76 usft	Latitude: 40.417972
From:	Lat/Long	Easting:	3,187,006.76 usft	Longitude: -104.828362
Position Uncertainty:	0.00 usft	Slot Radius:	13-3/16 "	Grid Convergence: 0.43 °

Well	BOST FARM 30N-11B-L			
Well Position	+N/-S	0.00 usft	Northing:	1,395,815.76 usft
	+E/-W	0.00 usft	Easting:	3,187,006.76 usft
Position Uncertainty		3.28 usft	Wellhead Elevation:	Latitude: 40.417972
				Longitude: -104.828362
				Ground Level: 4,878.00 usft

Wellbore	Wellbore #1				
Magnetics	Model Name	Sample Date	Declination (°)	Dip Angle (°)	Field Strength (nT)
	IGRF2015	12/18/2017	8.19	66.85	52,336.96293788

Design	Design #1			
Audit Notes:				
Version:	Phase:	PLAN	Tie On Depth:	0.00
Vertical Section:	Depth From (TVD) (usft)	+N/-S (usft)	+E/-W (usft)	Direction (°)
	0.00	0.00	0.00	275.77

Plan Survey Tool Program	Date	12/28/2017		
Depth From (usft)	Depth To (usft)	Survey (Wellbore)	Tool Name	Remarks
1	0.00	1,750.00	Design #1 (Wellbore #1)	SRC Energy_ISCWSA REV 2
				Fixed:v2:crustal field declinatio
2	1,750.00	17,301.60	Design #1 (Wellbore #1)	SRC Energy_ISCWSA REV 2
				Fixed:v2:crustal field declinatio

Plan Sections										
Measured Depth (usft)	Inclination (°)	Azimuth (°)	Vertical Depth (usft)	+N/-S (usft)	+E/-W (usft)	Dogleg Rate (°/100usft)	Build Rate (°/100usft)	Turn Rate (°/100usft)	TFO (°)	Target
0.00	0.00	0.00	0.00	0.00	0.00	0.00	0.00	0.00	0.00	
250.00	0.00	0.00	250.00	0.00	0.00	0.00	0.00	0.00	0.00	
855.00	12.10	329.40	850.51	54.78	-32.40	2.00	2.00	0.00	329.40	
6,549.16	12.10	329.40	6,418.17	1,082.17	-639.99	0.00	0.00	0.00	0.00	
7,483.41	90.15	269.65	6,978.00	1,182.20	-1,275.28	9.00	8.35	-6.40	-60.28	
17,301.60	90.15	269.65	6,953.00	1,121.62	-11,093.24	0.00	0.00	0.00	0.00	BOST FARM 30N-11E

Hewlett-Packard

Planning Report

Database:	EDM 5000.14 Single User Db	Local Co-ordinate Reference:	Well BOST FARM 30N-11B-L
Company:	SRC ENERGY	TVD Reference:	RKB = 20' @ 4898.00usft (PD 462)
Project:	WELD COUNTY (NAD83, TRUE NORTH)	MD Reference:	RKB = 20' @ 4898.00usft (PD 462)
Site:	5N-66W-07 BOST FARM 5-7 PAD	North Reference:	True
Well:	BOST FARM 30N-11B-L	Survey Calculation Method:	Minimum Curvature
Wellbore:	Wellbore #1		
Design:	Design #1		

Planned Survey									
Measured Depth (usft)	Inclination (°)	Azimuth (°)	Vertical Depth (usft)	+N/-S (usft)	+E/-W (usft)	Vertical Section (usft)	Dogleg Rate (°/100usft)	Build Rate (°/100usft)	Turn Rate (°/100usft)
0.00	0.00	0.00	0.00	0.00	0.00	0.00	0.00	0.00	0.00
100.00	0.00	0.00	100.00	0.00	0.00	0.00	0.00	0.00	0.00
200.00	0.00	0.00	200.00	0.00	0.00	0.00	0.00	0.00	0.00
250.00	0.00	0.00	250.00	0.00	0.00	0.00	0.00	0.00	0.00
Begin Nudge @ 250.00ft									
300.00	1.00	329.40	300.00	0.38	-0.22	0.26	2.00	2.00	0.00
400.00	3.00	329.40	399.93	3.38	-2.00	2.33	2.00	2.00	0.00
500.00	5.00	329.40	499.68	9.38	-5.55	6.46	2.00	2.00	0.00
600.00	7.00	329.40	599.13	18.38	-10.87	12.66	2.00	2.00	0.00
700.00	9.00	329.40	698.15	30.36	-17.95	20.92	2.00	2.00	0.00
800.00	11.00	329.40	796.63	45.30	-26.79	31.21	2.00	2.00	0.00
855.00	12.10	329.40	850.51	54.78	-32.40	37.74	2.00	2.00	0.00
End Nudge @ 855.00ft									
900.00	12.10	329.40	894.51	62.90	-37.20	43.34	0.00	0.00	0.00
1,000.00	12.10	329.40	992.29	80.95	-47.87	55.77	0.00	0.00	0.00
1,100.00	12.10	329.40	1,090.07	98.99	-58.54	68.20	0.00	0.00	0.00
1,200.00	12.10	329.40	1,187.85	117.03	-69.21	80.63	0.00	0.00	0.00
1,300.00	12.10	329.40	1,285.63	135.07	-79.88	93.06	0.00	0.00	0.00
1,400.00	12.10	329.40	1,383.40	153.12	-90.55	105.50	0.00	0.00	0.00
1,500.00	12.10	329.40	1,481.18	171.16	-101.22	117.93	0.00	0.00	0.00
1,600.00	12.10	329.40	1,578.96	189.20	-111.89	130.36	0.00	0.00	0.00
1,700.00	12.10	329.40	1,676.74	207.24	-122.56	142.79	0.00	0.00	0.00
1,774.92	12.10	329.40	1,750.00	220.76	-130.56	152.10	0.00	0.00	0.00
9 5/8"									
1,800.00	12.10	329.40	1,774.52	225.29	-133.23	155.22	0.00	0.00	0.00
1,900.00	12.10	329.40	1,872.30	243.33	-143.90	167.65	0.00	0.00	0.00
2,000.00	12.10	329.40	1,970.07	261.37	-154.58	180.08	0.00	0.00	0.00
2,100.00	12.10	329.40	2,067.85	279.42	-165.25	192.51	0.00	0.00	0.00
2,200.00	12.10	329.40	2,165.63	297.46	-175.92	204.94	0.00	0.00	0.00
2,300.00	12.10	329.40	2,263.41	315.50	-186.59	217.38	0.00	0.00	0.00
2,400.00	12.10	329.40	2,361.19	333.54	-197.26	229.81	0.00	0.00	0.00
2,500.00	12.10	329.40	2,458.97	351.59	-207.93	242.24	0.00	0.00	0.00
2,600.00	12.10	329.40	2,556.74	369.63	-218.60	254.67	0.00	0.00	0.00
2,700.00	12.10	329.40	2,654.52	387.67	-229.27	267.10	0.00	0.00	0.00
2,800.00	12.10	329.40	2,752.30	405.71	-239.94	279.53	0.00	0.00	0.00
2,900.00	12.10	329.40	2,850.08	423.76	-250.61	291.96	0.00	0.00	0.00
3,000.00	12.10	329.40	2,947.86	441.80	-261.28	304.39	0.00	0.00	0.00
3,100.00	12.10	329.40	3,045.64	459.84	-271.95	316.83	0.00	0.00	0.00
3,200.00	12.10	329.40	3,143.41	477.89	-282.62	329.26	0.00	0.00	0.00
3,300.00	12.10	329.40	3,241.19	495.93	-293.29	341.69	0.00	0.00	0.00
3,400.00	12.10	329.40	3,338.97	513.97	-303.96	354.12	0.00	0.00	0.00
3,500.00	12.10	329.40	3,436.75	532.01	-314.63	366.55	0.00	0.00	0.00
3,600.00	12.10	329.40	3,534.53	550.06	-325.30	378.98	0.00	0.00	0.00
3,700.00	12.10	329.40	3,632.31	568.10	-335.97	391.41	0.00	0.00	0.00
3,800.00	12.10	329.40	3,730.08	586.14	-346.64	403.84	0.00	0.00	0.00
3,900.00	12.10	329.40	3,827.86	604.18	-357.31	416.28	0.00	0.00	0.00
4,000.00	12.10	329.40	3,925.64	622.23	-367.98	428.71	0.00	0.00	0.00
4,100.00	12.10	329.40	4,023.42	640.27	-378.65	441.14	0.00	0.00	0.00
4,200.00	12.10	329.40	4,121.20	658.31	-389.33	453.57	0.00	0.00	0.00
4,300.00	12.10	329.40	4,218.98	676.36	-400.00	466.00	0.00	0.00	0.00
4,400.00	12.10	329.40	4,316.75	694.40	-410.67	478.43	0.00	0.00	0.00
4,500.00	12.10	329.40	4,414.53	712.44	-421.34	490.86	0.00	0.00	0.00
4,600.00	12.10	329.40	4,512.31	730.48	-432.01	503.29	0.00	0.00	0.00

Hewlett-Packard

Planning Report

Database:	EDM 5000.14 Single User Db	Local Co-ordinate Reference:	Well BOST FARM 30N-11B-L
Company:	SRC ENERGY	TVD Reference:	RKB = 20' @ 4898.00usft (PD 462)
Project:	WELD COUNTY (NAD83, TRUE NORTH)	MD Reference:	RKB = 20' @ 4898.00usft (PD 462)
Site:	5N-66W-07 BOST FARM 5-7 PAD	North Reference:	True
Well:	BOST FARM 30N-11B-L	Survey Calculation Method:	Minimum Curvature
Wellbore:	Wellbore #1		
Design:	Design #1		

Planned Survey									
Measured Depth (usft)	Inclination (°)	Azimuth (°)	Vertical Depth (usft)	+N/-S (usft)	+E/-W (usft)	Vertical Section (usft)	Dogleg Rate (°/100usft)	Build Rate (°/100usft)	Turn Rate (°/100usft)
4,700.00	12.10	329.40	4,610.09	748.53	-442.68	515.73	0.00	0.00	0.00
4,800.00	12.10	329.40	4,707.87	766.57	-453.35	528.16	0.00	0.00	0.00
4,900.00	12.10	329.40	4,805.65	784.61	-464.02	540.59	0.00	0.00	0.00
5,000.00	12.10	329.40	4,903.42	802.66	-474.69	553.02	0.00	0.00	0.00
5,100.00	12.10	329.40	5,001.20	820.70	-485.36	565.45	0.00	0.00	0.00
5,200.00	12.10	329.40	5,098.98	838.74	-496.03	577.88	0.00	0.00	0.00
5,300.00	12.10	329.40	5,196.76	856.78	-506.70	590.31	0.00	0.00	0.00
5,400.00	12.10	329.40	5,294.54	874.83	-517.37	602.74	0.00	0.00	0.00
5,500.00	12.10	329.40	5,392.32	892.87	-528.04	615.18	0.00	0.00	0.00
5,600.00	12.10	329.40	5,490.09	910.91	-538.71	627.61	0.00	0.00	0.00
5,700.00	12.10	329.40	5,587.87	928.95	-549.38	640.04	0.00	0.00	0.00
5,800.00	12.10	329.40	5,685.65	947.00	-560.05	652.47	0.00	0.00	0.00
5,900.00	12.10	329.40	5,783.43	965.04	-570.72	664.90	0.00	0.00	0.00
6,000.00	12.10	329.40	5,881.21	983.08	-581.39	677.33	0.00	0.00	0.00
6,100.00	12.10	329.40	5,978.99	1,001.13	-592.06	689.76	0.00	0.00	0.00
6,200.00	12.10	329.40	6,076.76	1,019.17	-602.73	702.19	0.00	0.00	0.00
6,300.00	12.10	329.40	6,174.54	1,037.21	-613.40	714.63	0.00	0.00	0.00
6,400.00	12.10	329.40	6,272.32	1,055.25	-624.08	727.06	0.00	0.00	0.00
6,500.00	12.10	329.40	6,370.10	1,073.30	-634.75	739.49	0.00	0.00	0.00
6,549.16	12.10	329.40	6,418.17	1,082.17	-639.99	745.60	0.00	0.00	0.00
KOP @ 6549.16ft :: DLS = 9°/100'									
6,600.00	14.90	313.77	6,467.61	1,091.28	-647.43	753.91	9.00	5.51	-30.75
6,650.00	18.35	303.61	6,515.53	1,100.09	-658.63	765.95	9.00	6.90	-20.33
6,700.00	22.17	296.70	6,562.43	1,108.68	-673.62	781.73	9.00	7.64	-13.81
6,750.00	26.20	291.78	6,608.04	1,117.02	-692.31	801.16	9.00	8.05	-9.84
6,800.00	30.35	288.11	6,652.07	1,125.05	-714.57	824.12	9.00	8.30	-7.34
6,850.00	34.58	285.25	6,694.25	1,132.71	-740.28	850.46	9.00	8.46	-5.71
6,900.00	38.87	282.95	6,734.32	1,139.96	-769.27	880.04	9.00	8.57	-4.60
6,950.00	43.19	281.05	6,772.03	1,146.76	-801.37	912.66	9.00	8.65	-3.81
7,000.00	47.54	279.43	6,807.15	1,153.07	-836.38	948.12	9.00	8.70	-3.24
7,050.00	51.91	278.02	6,839.47	1,158.84	-874.07	986.21	9.00	8.74	-2.82
7,100.00	56.29	276.77	6,868.78	1,164.03	-914.23	1,026.68	9.00	8.77	-2.50
7,150.00	60.69	275.64	6,894.90	1,168.63	-956.60	1,069.30	9.00	8.79	-2.26
7,200.00	65.09	274.60	6,917.68	1,172.59	-1,000.92	1,113.79	9.00	8.81	-2.07
7,250.00	69.51	273.64	6,936.97	1,175.90	-1,046.91	1,159.89	9.00	8.82	-1.93
7,300.00	73.92	272.73	6,952.66	1,178.54	-1,094.30	1,207.30	9.00	8.83	-1.82
7,350.00	78.34	271.86	6,964.64	1,180.48	-1,142.79	1,255.74	9.00	8.84	-1.74
7,400.00	82.77	271.02	6,972.84	1,181.72	-1,192.09	1,304.91	9.00	8.85	-1.68
7,450.00	87.19	270.19	6,977.22	1,182.24	-1,241.88	1,354.50	9.00	8.85	-1.65
7,483.41	90.15	269.65	6,978.00	1,182.20	-1,275.28	1,387.73	9.00	8.85	-1.64
End Build @ 7483.41ft - 5 1/2"									
7,500.00	90.15	269.65	6,977.95	1,182.10	-1,291.87	1,404.22	0.00	0.00	0.00
7,600.00	90.15	269.65	6,977.70	1,181.48	-1,391.86	1,503.65	0.00	0.00	0.00
7,700.00	90.15	269.65	6,977.44	1,180.86	-1,491.86	1,603.08	0.00	0.00	0.00
7,800.00	90.15	269.65	6,977.19	1,180.24	-1,591.86	1,702.51	0.00	0.00	0.00
7,900.00	90.15	269.65	6,976.94	1,179.63	-1,691.86	1,801.93	0.00	0.00	0.00
8,000.00	90.15	269.65	6,976.68	1,179.01	-1,791.86	1,901.36	0.00	0.00	0.00
8,100.00	90.15	269.65	6,976.43	1,178.39	-1,891.85	2,000.79	0.00	0.00	0.00
8,200.00	90.15	269.65	6,976.17	1,177.78	-1,991.85	2,100.22	0.00	0.00	0.00
8,300.00	90.15	269.65	6,975.92	1,177.16	-2,091.85	2,199.65	0.00	0.00	0.00
8,400.00	90.15	269.65	6,975.66	1,176.54	-2,191.85	2,299.08	0.00	0.00	0.00
8,500.00	90.15	269.65	6,975.41	1,175.93	-2,291.84	2,398.51	0.00	0.00	0.00
8,600.00	90.15	269.65	6,975.15	1,175.31	-2,391.84	2,497.93	0.00	0.00	0.00
8,700.00	90.15	269.65	6,974.90	1,174.69	-2,491.84	2,597.36	0.00	0.00	0.00

Hewlett-Packard

Planning Report

Database:	EDM 5000.14 Single User Db	Local Co-ordinate Reference:	Well BOST FARM 30N-11B-L
Company:	SRC ENERGY	TVD Reference:	RKB = 20' @ 4898.00usft (PD 462)
Project:	WELD COUNTY (NAD83, TRUE NORTH)	MD Reference:	RKB = 20' @ 4898.00usft (PD 462)
Site:	5N-66W-07 BOST FARM 5-7 PAD	North Reference:	True
Well:	BOST FARM 30N-11B-L	Survey Calculation Method:	Minimum Curvature
Wellbore:	Wellbore #1		
Design:	Design #1		

Planned Survey										
Measured Depth (usft)	Inclination (°)	Azimuth (°)	Vertical Depth (usft)	+N/-S (usft)	+E/-W (usft)	Vertical Section (usft)	Dogleg Rate (°/100usft)	Build Rate (°/100usft)	Turn Rate (°/100usft)	
8,800.00	90.15	269.65	6,974.64	1,174.07	-2,591.84	2,696.79	0.00	0.00	0.00	
8,900.00	90.15	269.65	6,974.39	1,173.46	-2,691.84	2,796.22	0.00	0.00	0.00	
9,000.00	90.15	269.65	6,974.13	1,172.84	-2,791.83	2,895.65	0.00	0.00	0.00	
9,100.00	90.15	269.65	6,973.88	1,172.22	-2,891.83	2,995.08	0.00	0.00	0.00	
9,200.00	90.15	269.65	6,973.63	1,171.61	-2,991.83	3,094.51	0.00	0.00	0.00	
9,300.00	90.15	269.65	6,973.37	1,170.99	-3,091.83	3,193.93	0.00	0.00	0.00	
9,400.00	90.15	269.65	6,973.12	1,170.37	-3,191.82	3,293.36	0.00	0.00	0.00	
9,500.00	90.15	269.65	6,972.86	1,169.76	-3,291.82	3,392.79	0.00	0.00	0.00	
9,600.00	90.15	269.65	6,972.61	1,169.14	-3,391.82	3,492.22	0.00	0.00	0.00	
9,700.00	90.15	269.65	6,972.35	1,168.52	-3,491.82	3,591.65	0.00	0.00	0.00	
9,800.00	90.15	269.65	6,972.10	1,167.90	-3,591.82	3,691.08	0.00	0.00	0.00	
9,900.00	90.15	269.65	6,971.84	1,167.29	-3,691.81	3,790.51	0.00	0.00	0.00	
10,000.00	90.15	269.65	6,971.59	1,166.67	-3,791.81	3,889.93	0.00	0.00	0.00	
10,100.00	90.15	269.65	6,971.33	1,166.05	-3,891.81	3,989.36	0.00	0.00	0.00	
10,200.00	90.15	269.65	6,971.08	1,165.44	-3,991.81	4,088.79	0.00	0.00	0.00	
10,300.00	90.15	269.65	6,970.83	1,164.82	-4,091.80	4,188.22	0.00	0.00	0.00	
10,400.00	90.15	269.65	6,970.57	1,164.20	-4,191.80	4,287.65	0.00	0.00	0.00	
10,500.00	90.15	269.65	6,970.32	1,163.59	-4,291.80	4,387.08	0.00	0.00	0.00	
10,600.00	90.15	269.65	6,970.06	1,162.97	-4,391.80	4,486.50	0.00	0.00	0.00	
10,700.00	90.15	269.65	6,969.81	1,162.35	-4,491.80	4,585.93	0.00	0.00	0.00	
10,800.00	90.15	269.65	6,969.55	1,161.73	-4,591.79	4,685.36	0.00	0.00	0.00	
10,900.00	90.15	269.65	6,969.30	1,161.12	-4,691.79	4,784.79	0.00	0.00	0.00	
11,000.00	90.15	269.65	6,969.04	1,160.50	-4,791.79	4,884.22	0.00	0.00	0.00	
11,100.00	90.15	269.65	6,968.79	1,159.88	-4,891.79	4,983.65	0.00	0.00	0.00	
11,200.00	90.15	269.65	6,968.53	1,159.27	-4,991.78	5,083.08	0.00	0.00	0.00	
11,300.00	90.15	269.65	6,968.28	1,158.65	-5,091.78	5,182.50	0.00	0.00	0.00	
11,400.00	90.15	269.65	6,968.02	1,158.03	-5,191.78	5,281.93	0.00	0.00	0.00	
11,500.00	90.15	269.65	6,967.77	1,157.42	-5,291.78	5,381.36	0.00	0.00	0.00	
11,600.00	90.15	269.65	6,967.52	1,156.80	-5,391.78	5,480.79	0.00	0.00	0.00	
11,700.00	90.15	269.65	6,967.26	1,156.18	-5,491.77	5,580.22	0.00	0.00	0.00	
11,800.00	90.15	269.65	6,967.01	1,155.57	-5,591.77	5,679.65	0.00	0.00	0.00	
11,900.00	90.15	269.65	6,966.75	1,154.95	-5,691.77	5,779.08	0.00	0.00	0.00	
12,000.00	90.15	269.65	6,966.50	1,154.33	-5,791.77	5,878.50	0.00	0.00	0.00	
12,100.00	90.15	269.65	6,966.24	1,153.71	-5,891.76	5,977.93	0.00	0.00	0.00	
12,200.00	90.15	269.65	6,965.99	1,153.10	-5,991.76	6,077.36	0.00	0.00	0.00	
12,300.00	90.15	269.65	6,965.73	1,152.48	-6,091.76	6,176.79	0.00	0.00	0.00	
12,400.00	90.15	269.65	6,965.48	1,151.86	-6,191.76	6,276.22	0.00	0.00	0.00	
12,500.00	90.15	269.65	6,965.22	1,151.25	-6,291.76	6,375.65	0.00	0.00	0.00	
12,600.00	90.15	269.65	6,964.97	1,150.63	-6,391.75	6,475.08	0.00	0.00	0.00	
12,700.00	90.15	269.65	6,964.72	1,150.01	-6,491.75	6,574.50	0.00	0.00	0.00	
12,800.00	90.15	269.65	6,964.46	1,149.40	-6,591.75	6,673.93	0.00	0.00	0.00	
12,900.00	90.15	269.65	6,964.21	1,148.78	-6,691.75	6,773.36	0.00	0.00	0.00	
13,000.00	90.15	269.65	6,963.95	1,148.16	-6,791.74	6,872.79	0.00	0.00	0.00	
13,100.00	90.15	269.65	6,963.70	1,147.54	-6,891.74	6,972.22	0.00	0.00	0.00	
13,200.00	90.15	269.65	6,963.44	1,146.93	-6,991.74	7,071.65	0.00	0.00	0.00	
13,300.00	90.15	269.65	6,963.19	1,146.31	-7,091.74	7,171.08	0.00	0.00	0.00	
13,400.00	90.15	269.65	6,962.93	1,145.69	-7,191.74	7,270.50	0.00	0.00	0.00	
13,500.00	90.15	269.65	6,962.68	1,145.08	-7,291.73	7,369.93	0.00	0.00	0.00	
13,600.00	90.15	269.65	6,962.42	1,144.46	-7,391.73	7,469.36	0.00	0.00	0.00	
13,700.00	90.15	269.65	6,962.17	1,143.84	-7,491.73	7,568.79	0.00	0.00	0.00	
13,800.00	90.15	269.65	6,961.91	1,143.23	-7,591.73	7,668.22	0.00	0.00	0.00	
13,900.00	90.15	269.65	6,961.66	1,142.61	-7,691.72	7,767.65	0.00	0.00	0.00	
14,000.00	90.15	269.65	6,961.41	1,141.99	-7,791.72	7,867.07	0.00	0.00	0.00	
14,100.00	90.15	269.65	6,961.15	1,141.37	-7,891.72	7,966.50	0.00	0.00	0.00	

Hewlett-Packard

Planning Report

Database:	EDM 5000.14 Single User Db	Local Co-ordinate Reference:	Well BOST FARM 30N-11B-L
Company:	SRC ENERGY	TVD Reference:	RKB = 20' @ 4898.00usft (PD 462)
Project:	WELD COUNTY (NAD83, TRUE NORTH)	MD Reference:	RKB = 20' @ 4898.00usft (PD 462)
Site:	5N-66W-07 BOST FARM 5-7 PAD	North Reference:	True
Well:	BOST FARM 30N-11B-L	Survey Calculation Method:	Minimum Curvature
Wellbore:	Wellbore #1		
Design:	Design #1		

Planned Survey									
Measured Depth (usft)	Inclination (°)	Azimuth (°)	Vertical Depth (usft)	+N/-S (usft)	+E/-W (usft)	Vertical Section (usft)	Dogleg Rate (°/100usft)	Build Rate (°/100usft)	Turn Rate (°/100usft)
14,200.00	90.15	269.65	6,960.90	1,140.76	-7,991.72	8,065.93	0.00	0.00	0.00
14,300.00	90.15	269.65	6,960.64	1,140.14	-8,091.72	8,165.36	0.00	0.00	0.00
14,400.00	90.15	269.65	6,960.39	1,139.52	-8,191.71	8,264.79	0.00	0.00	0.00
14,500.00	90.15	269.65	6,960.13	1,138.91	-8,291.71	8,364.22	0.00	0.00	0.00
14,600.00	90.15	269.65	6,959.88	1,138.29	-8,391.71	8,463.65	0.00	0.00	0.00
14,700.00	90.15	269.65	6,959.62	1,137.67	-8,491.71	8,563.07	0.00	0.00	0.00
14,800.00	90.15	269.65	6,959.37	1,137.06	-8,591.70	8,662.50	0.00	0.00	0.00
14,900.00	90.15	269.65	6,959.11	1,136.44	-8,691.70	8,761.93	0.00	0.00	0.00
15,000.00	90.15	269.65	6,958.86	1,135.82	-8,791.70	8,861.36	0.00	0.00	0.00
15,100.00	90.15	269.65	6,958.61	1,135.20	-8,891.70	8,960.79	0.00	0.00	0.00
15,200.00	90.15	269.65	6,958.35	1,134.59	-8,991.70	9,060.22	0.00	0.00	0.00
15,300.00	90.15	269.65	6,958.10	1,133.97	-9,091.69	9,159.65	0.00	0.00	0.00
15,400.00	90.15	269.65	6,957.84	1,133.35	-9,191.69	9,259.07	0.00	0.00	0.00
15,500.00	90.15	269.65	6,957.59	1,132.74	-9,291.69	9,358.50	0.00	0.00	0.00
15,600.00	90.15	269.65	6,957.33	1,132.12	-9,391.69	9,457.93	0.00	0.00	0.00
15,700.00	90.15	269.65	6,957.08	1,131.50	-9,491.68	9,557.36	0.00	0.00	0.00
15,800.00	90.15	269.65	6,956.82	1,130.89	-9,591.68	9,656.79	0.00	0.00	0.00
15,900.00	90.15	269.65	6,956.57	1,130.27	-9,691.68	9,756.22	0.00	0.00	0.00
16,000.00	90.15	269.65	6,956.31	1,129.65	-9,791.68	9,855.65	0.00	0.00	0.00
16,100.00	90.15	269.65	6,956.06	1,129.03	-9,891.68	9,955.07	0.00	0.00	0.00
16,200.00	90.15	269.65	6,955.80	1,128.42	-9,991.67	10,054.50	0.00	0.00	0.00
16,300.00	90.15	269.65	6,955.55	1,127.80	-10,091.67	10,153.93	0.00	0.00	0.00
16,400.00	90.15	269.65	6,955.30	1,127.18	-10,191.67	10,253.36	0.00	0.00	0.00
16,500.00	90.15	269.65	6,955.04	1,126.57	-10,291.67	10,352.79	0.00	0.00	0.00
16,600.00	90.15	269.65	6,954.79	1,125.95	-10,391.66	10,452.22	0.00	0.00	0.00
16,700.00	90.15	269.65	6,954.53	1,125.33	-10,491.66	10,551.65	0.00	0.00	0.00
16,800.00	90.15	269.65	6,954.28	1,124.72	-10,591.66	10,651.07	0.00	0.00	0.00
16,900.00	90.15	269.65	6,954.02	1,124.10	-10,691.66	10,750.50	0.00	0.00	0.00
17,000.00	90.15	269.65	6,953.77	1,123.48	-10,791.66	10,849.93	0.00	0.00	0.00
17,100.00	90.15	269.65	6,953.51	1,122.86	-10,891.65	10,949.36	0.00	0.00	0.00
17,200.00	90.15	269.65	6,953.26	1,122.25	-10,991.65	11,048.79	0.00	0.00	0.00
17,301.60	90.15	269.65	6,953.00	1,121.62	-11,093.24	11,149.80	0.00	0.00	0.00
TD Well @ 17301.59ft									

Casing Points					
Measured Depth (usft)	Vertical Depth (usft)	Name		Casing Diameter (")	Hole Diameter (")
1,774.92	1,750.00	9 5/8"		9-5/8	13-1/2
7,483.41	6,978.00	5 1/2"		5-1/2	8-1/2

Plan Annotations					
Measured Depth (usft)	Vertical Depth (usft)	Local Coordinates		Comment	
		+N/-S (usft)	+E/-W (usft)		
250.00	250.00	0.00	0.00	Begin Nudge @ 250.00ft	
855.00	850.51	54.78	-32.40	End Nudge @ 855.00ft	
6,549.16	6,418.17	1,082.17	-639.99	KOP @ 6549.16ft :: DLS = 9°/100'	
7,483.41	6,978.00	1,182.20	-1,275.28	End Build @ 7483.41ft	
17,301.60	6,953.00	1,121.62	-11,093.24	TD Well @ 17301.59ft	