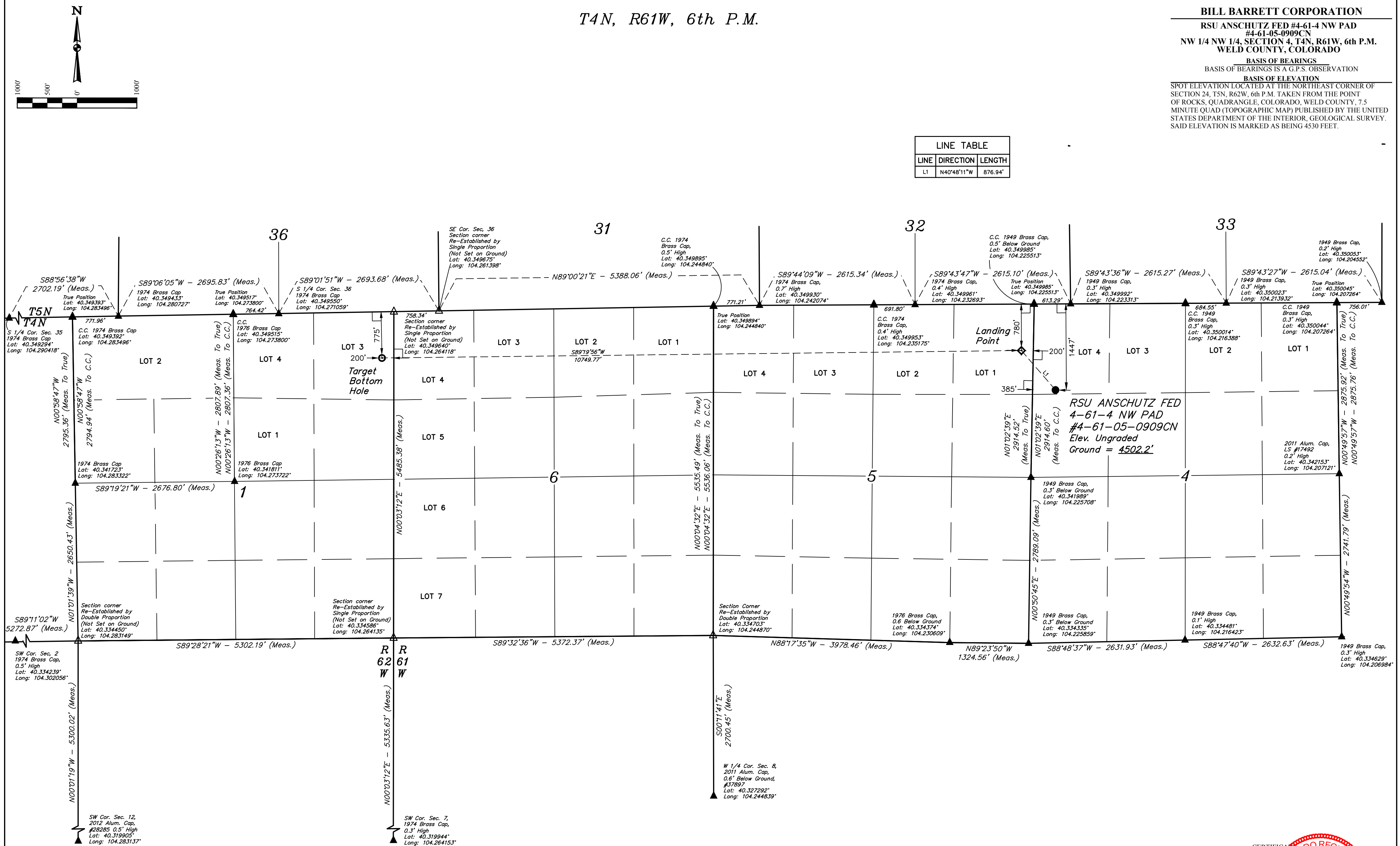


T4N, R61W, 6th P.M.

BILL BARRETT CORPORATION
RSU ANSCHUTZ FED #4-61-4 NW PAD
#4-61-05-0909CN
NW 1/4 NW 1/4, SECTION 4, T4N, R61W, 6th P.M.
WELD COUNTY, COLORADO
BASIS OF BEARINGS
BASIS OF BEARINGS IS A G.P.S. OBSERVATION
BASIS OF ELEVATION
SPOT ELEVATION LOCATED AT THE NORTHEAST CORNER OF
SECTION 24, T5N, R62W, 6th P.M. TAKEN FROM THE POINT
OF ROCKS, QUADRANGLE, COLORADO, WELD COUNTY, 7.5
MINUTE QUAD (TOPOGRAPHIC MAP) PUBLISHED BY THE UNITED
STATES DEPARTMENT OF THE INTERIOR, GEOLOGICAL SURVEY.
SAID ELEVATION IS MARKED AS BEING 4530 FEET.

LINE TABLE		
LINE	DIRECTION	LENGTH
L1	N40°48'11"W	876.94'



LEGEND:
— = 90° SYMBOL
● = PROPOSED WELLHEAD
◆ = LANDING POINT
○ = TARGET BOTTOM HOLE
▲ = SECTION CORNERS LOCATED. (NAD 83)
△ = SECTION CORNERS RE-ESTABLISHED.
(Not Set on Ground.) (NAD 83)

NAD 83 (SURFACE LOCATION)	NAD 83 (LANDING POINT)	NAD 83 (TARGET BOTTOM HOLE)
LATITUDE = 40°20'45.67" (40.346020) LONGITUDE = 104°13'27.22" (104.224228)	LATITUDE = 40°20'52.23" (40.347842) LONGITUDE = 104°13'34.62" (104.226283)	LATITUDE = 40°20'51.01" (40.347504) LONGITUDE = 104°15'53.42" (104.264838)
NAD 27 (SURFACE LOCATION)	NAD 27 (LANDING POINT)	NAD 27 (TARGET BOTTOM HOLE)
LATITUDE = 40°20'45.74" (40.346038) LONGITUDE = 104°13'25.40" (104.223722)	LATITUDE = 40°20'52.30" (40.347860) LONGITUDE = 104°13'32.80" (104.225777)	LATITUDE = 40°20'51.08" (40.347522) LONGITUDE = 104°15'51.59" (104.264331)
STATE PLANE NAD 83 (CO. NORTH)	STATE PLANE NAD 83 (CO. NORTH)	STATE PLANE NAD 83 (CO. NORTH)
N: 1371453.58 E: 3355586.34	N: 1372109.16 E: 3355004.23	N: 1371833.86 E: 3344260.80
STATE PLANE NAD 27 (CO. NORTH)	STATE PLANE NAD 27 (CO. NORTH)	STATE PLANE NAD 27 (CO. NORTH)
N: 371455.71 E: 2355736.67	N: 372111.26 E: 2355154.54	N: 371835.97 E: 2344410.92

THIS IS TO CERTIFY THAT THE ABOVE SURVEY WAS MADE BY ME OR UNDER MY CLOSE PERSONAL SUPERVISION AND THAT THE SAME ARE TRUE AND CORRECT TO THE BEST OF MY KNOWLEDGE AND BELIEF.
ROBERT FISHER
REGISTERED LAND SURVEYOR
REGISTRATION NO. 28285
STATE OF COLORADO
EXPIRATION DATE 12-18

UJINTAH
CORPORATE OFFICE * 85 South 200 East
Vernal, UT 84078 * (435) 789-1017
SURVEYED BY: ROBERT FISHER
DRAWN BY: D.J.W.
SCALE: 06-15-17
01-22-18
1" = 1000'
WELL LOCATION PLAT

PDOP = 1.3