



CERTIFICATE OF SURVEY
for
Chandler and Associates Inc.
Larimer County, Colorado

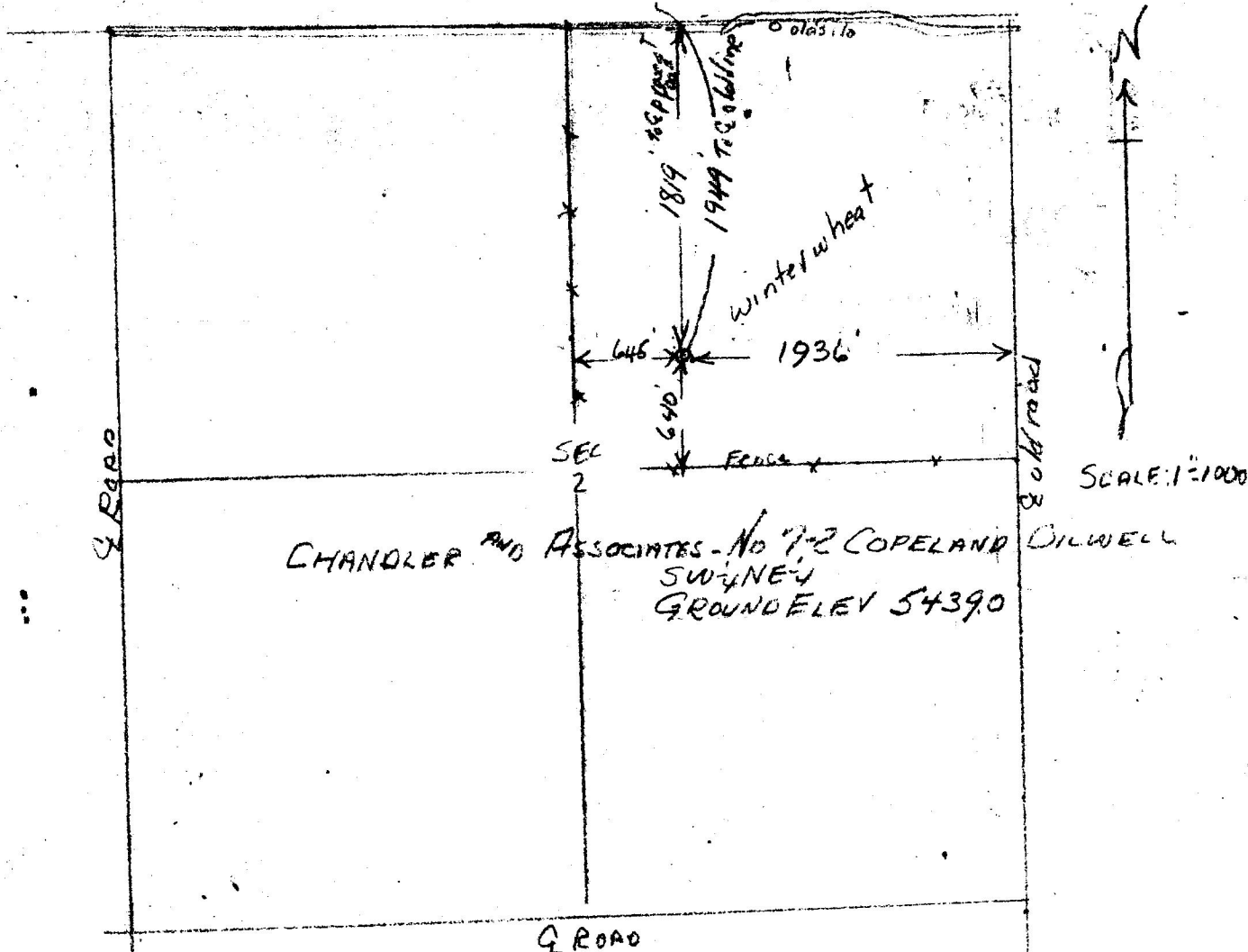
RECEIVED

DEC 29 1972

COLO. CH. & ASSOC. INC.

T9N R68W 6PM

old line to back side
and back in road
130 No. of present R.R.



I hereby certify that above plat is an accurate representation of a correct survey showing the location of Chandler and Associates Inc. No. 7-2 Copeland Oilwell in ~~SW 1/4 NE 1/4~~ Sec. 2 T9N R68W 6PM. The elevation of the ground at the stake is 5439.0 feet above sea level from U.S.G.S. Mark.

Fort Morgan, Colorado
Dec. 24, 1972

Lucy J. Osborne
Registered Professional Engineer
State of Colorado