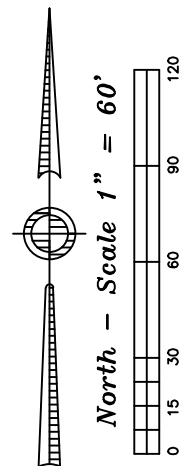
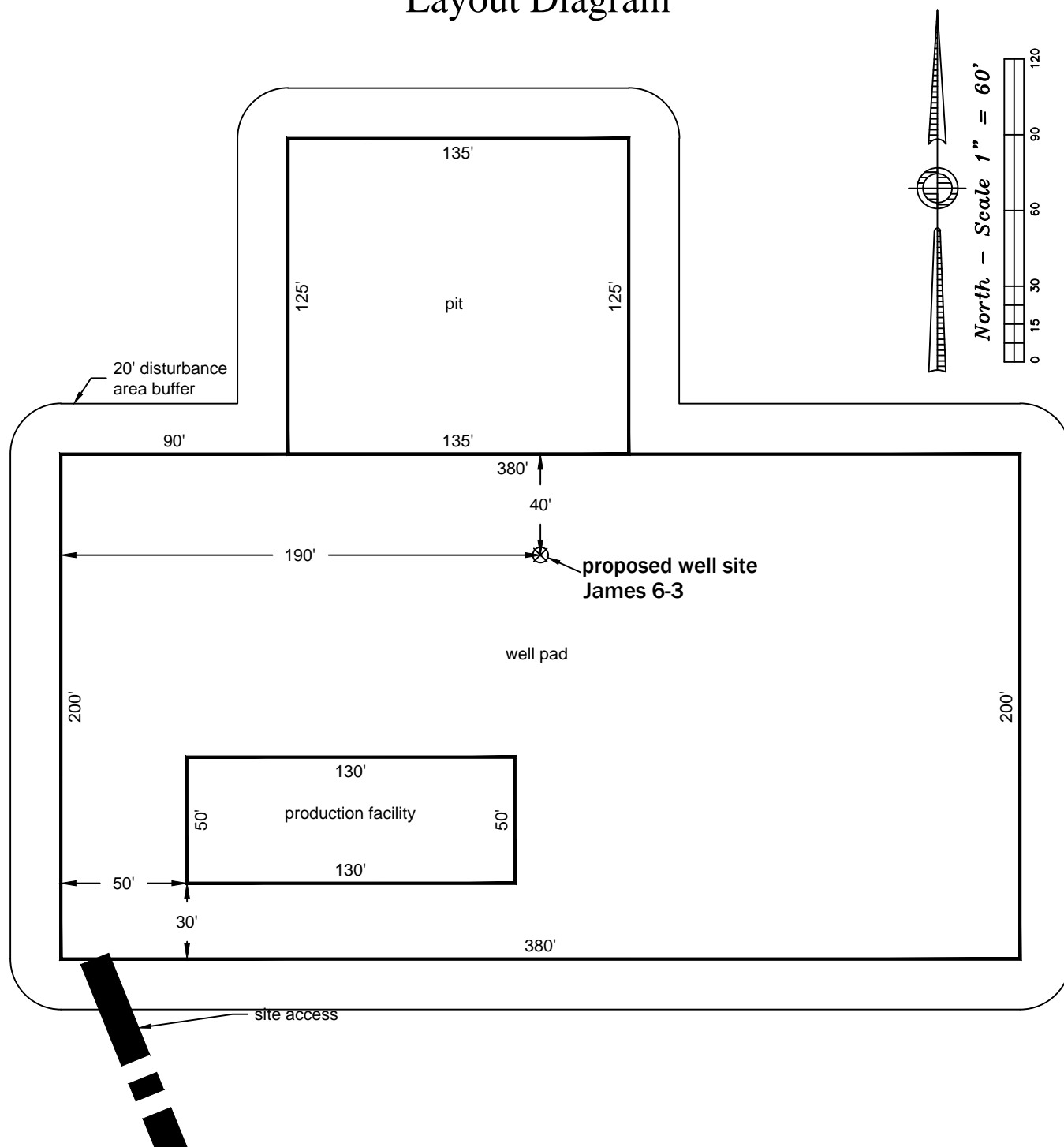


Layout Diagram



Size of location (well pad) and pit disturbance in acres: 2.8 acres
 Estimated location ground elevation: 5144' [NAVD88]

P:\Project\2017\17087\dwg\17087.dwg July 28, 2017 - 2:10pm

Well Name:	James 6-3	Field Date	Project#: 17087.001
		7.20.2017	
Section 3-T15S-R55W-6th PM, SE-NW		Party Chief	K3 Oil & Gas Operating Company
		DCB	
Lincoln County, Colorado		Proj. Manager	PLS Group 6843 North Franklin Avenue Loveland, Colorado 80538 970.669.2100 office - 970.669.3652 fax
		ZNB	
		Drawing Date	
		7.25.2017	