

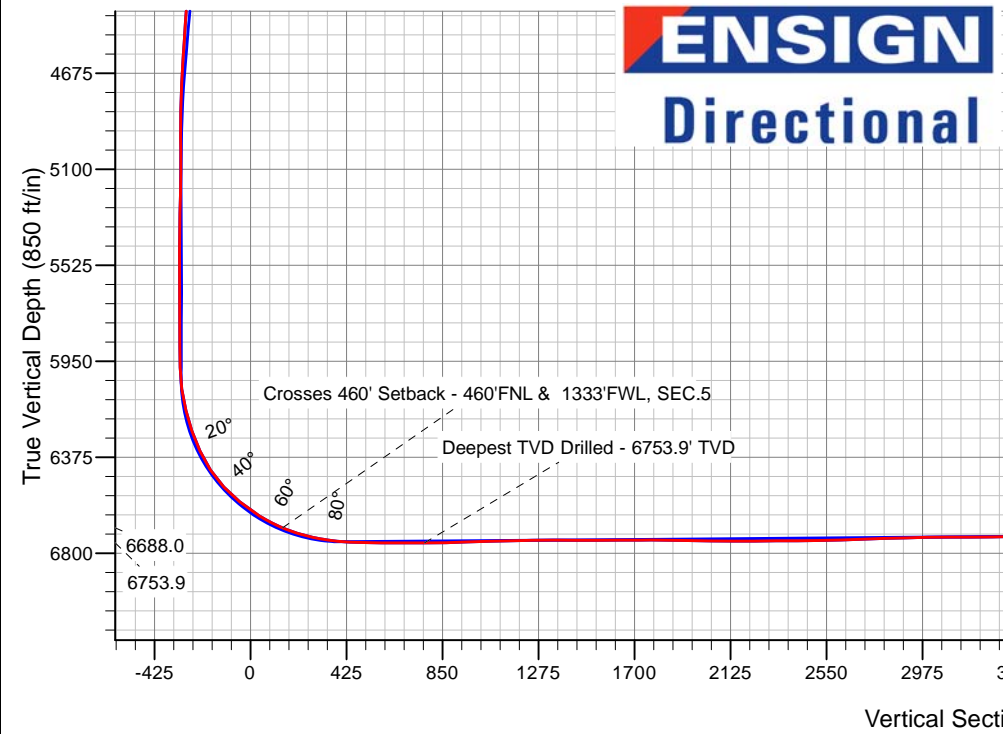
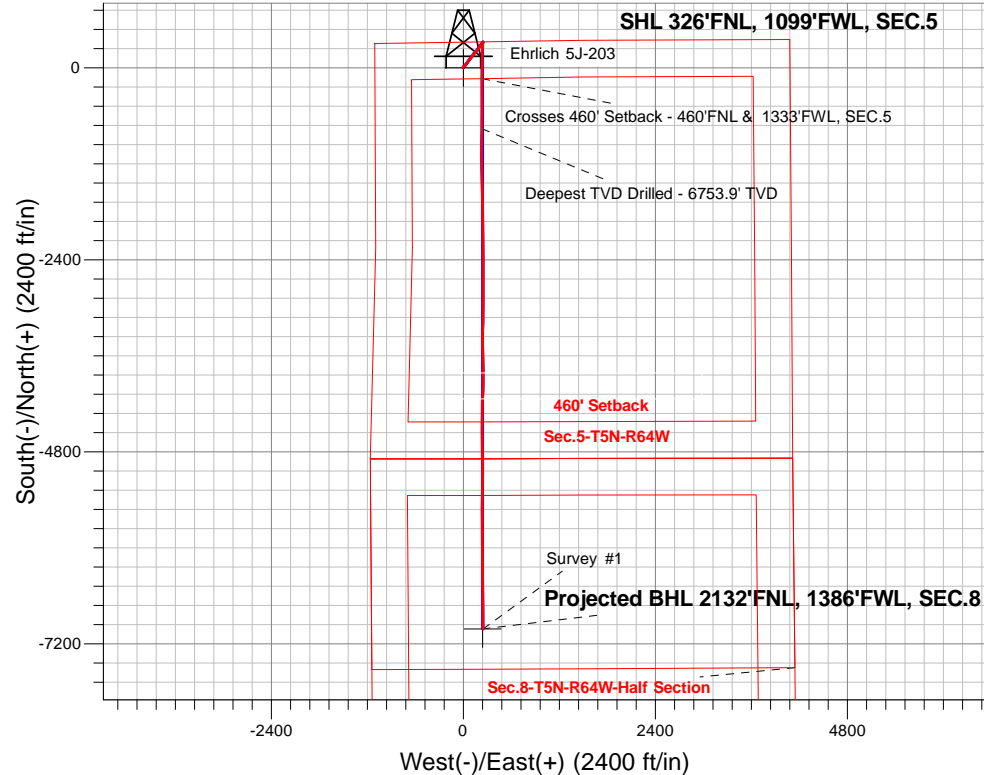
# PDC Energy Inc. DJ Basin

Well Name: **Ehrlich 5J-203**

Surface Location: Ehrlich 5N64W5J Pad Sec.5-T5N-R64W  
 North American Datum 1983 , US State Plane 1983, Colorado Northern Zone  
 Ground Elevation: 4641.0  
 +N/-S+E/-W Northing Easting Latitude Longitude Slot  
 0.0 0.0 402390.85256234.70 40.434314 -104.579499  
 Original Well Elev WELL @ 4664.0ft (Original Well Elev)

## FINAL SURVEY

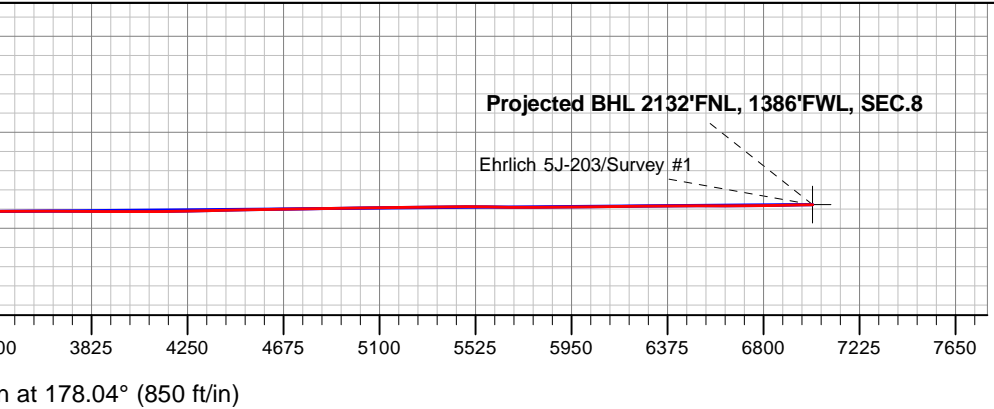
**Projected Bottom Hole Location**  
**13,783'MD 6696'TVD 7013'S & 246'E of SHL**  
**91.2 degree Incl @ 178.8 degree AZM**



Ehrlich 5N64W5J Pad Sec.5-T5N-R64W  
 Ehrlich 5J-203  
 Wellbore #1  
 8:59, March 27 2017

ANNOTATIONS		
TVD	MD	Annotation
6688.0	6894.8	Crosses 460' Setback - 460'FNL & 1333'FWL, SEC.5
6753.9	7531.0	Deepest TVD Drilled - 6753.9' TVD

LEGEND	
	Ehrlich 5J-203, Wellbore #1, Plan #1 (3-20-17)R V0
	Wellbore #1
	Survey #1





## **PDC Energy Inc. DJ Basin**

**SEC.5-T5N-R64W**

**Ehrlich 5N64W5J Pad Sec.5-T5N-R64W**

**Ehrlich 5J-203**

**Wellbore #1**

**Survey: Survey #1**

## **Standard Survey Report**

**27 March, 2017**



<b>Company:</b>	PDC Energy Inc. DJ Basin	<b>Local Co-ordinate Reference:</b>	Well Ehrlich 5J-203
<b>Project:</b>	SEC.5-T5N-R64W	<b>TVD Reference:</b>	WELL @ 4664.0ft (Original Well Elev)
<b>Site:</b>	Ehrlich 5N64W5J Pad Sec.5-T5N-R64W	<b>MD Reference:</b>	WELL @ 4664.0ft (Original Well Elev)
<b>Well:</b>	Ehrlich 5J-203	<b>North Reference:</b>	True
<b>Wellbore:</b>	Wellbore #1	<b>Survey Calculation Method:</b>	Minimum Curvature
<b>Design:</b>	Wellbore #1	<b>Database:</b>	US_EDM

<b>Project</b>	SEC.5-T5N-R64W, Weld County, Colorado		
<b>Map System:</b>	US State Plane 1983	<b>System Datum:</b>	Mean Sea Level
<b>Geo Datum:</b>	North American Datum 1983		Using Well Reference Point
<b>Map Zone:</b>	Colorado Northern Zone		Using geodetic scale factor

<b>Site</b>	Ehrlich 5N64W5J Pad Sec.5-T5N-R64W				
<b>Site Position:</b>		<b>Northing:</b>	1,402,450.62 usft	<b>Latitude:</b>	40.434478
<b>From:</b>	Lat/Long	<b>Easting:</b>	3,256,234.64 usft	<b>Longitude:</b>	-104.579497
<b>Position Uncertainty:</b>	0.0 ft	<b>Slot Radius:</b>	13-3/16 "	<b>Grid Convergence:</b>	0.59 °

<b>Well</b>	Ehrlich 5J-203					
<b>Well Position</b>	<b>+N/-S</b>	0.0 ft	<b>Northing:</b>	1,402,390.85 usft	<b>Latitude:</b>	40.434314
	<b>+E/-W</b>	0.0 ft	<b>Easting:</b>	3,256,234.70 usft	<b>Longitude:</b>	-104.579499
<b>Position Uncertainty</b>		0.0 ft	<b>Wellhead Elevation:</b>	0.0 ft	<b>Ground Level:</b>	4,641.0 ft

<b>Wellbore</b>	Wellbore #1				
<b>Magnetics</b>	<b>Model Name</b>	<b>Sample Date</b>	<b>Declination (°)</b>	<b>Dip Angle (°)</b>	<b>Field Strength (nT)</b>
	IGRF2010	3/20/2017	7.99	66.91	52,563

<b>Design</b>	Wellbore #1				
<b>Audit Notes:</b>					
<b>Version:</b>	1.0	<b>Phase:</b>	ACTUAL	<b>Tie On Depth:</b>	0.0
<b>Vertical Section:</b>	<b>Depth From (TVD) (ft)</b>	<b>+N/-S (ft)</b>	<b>+E/-W (ft)</b>	<b>Direction (°)</b>	
	0.0	0.0	0.0	178.04	

<b>Survey Program</b>	<b>Date</b>	3/27/2017			
<b>From (ft)</b>	<b>To (ft)</b>	<b>Survey (Wellbore)</b>	<b>Tool Name</b>	<b>Description</b>	
157.0	13,783.0	Survey #1 (Wellbore #1)	MWD	MWD - Standard	

<b>Survey</b>										
<b>Measured Depth (ft)</b>	<b>Inclination (°)</b>	<b>Azimuth (°)</b>	<b>Vertical Depth (ft)</b>	<b>+N/-S (ft)</b>	<b>+E/-W (ft)</b>	<b>Vertical Section (ft)</b>	<b>Dogleg Rate (°/100usft)</b>	<b>Build Rate (°/100usft)</b>	<b>Turn Rate (°/100usft)</b>	
0.0	0.00	0.00	0.0	0.0	0.0	0.0	0.00	0.00	0.00	
157.0	0.10	232.80	157.0	-0.1	-0.1	0.1	0.06	0.06	0.00	
253.0	0.30	287.10	253.0	-0.1	-0.4	0.0	0.27	0.21	56.56	
349.0	0.30	305.20	349.0	0.2	-0.9	-0.2	0.10	0.00	18.85	
444.0	0.40	325.10	444.0	0.6	-1.3	-0.6	0.16	0.11	20.95	
540.0	0.40	341.40	540.0	1.2	-1.6	-1.2	0.12	0.00	16.98	
636.0	0.40	327.70	636.0	1.8	-1.8	-1.8	0.10	0.00	-14.27	
731.0	0.50	344.60	731.0	2.4	-2.1	-2.5	0.17	0.11	17.79	
827.0	0.50	312.40	827.0	3.1	-2.5	-3.2	0.29	0.00	-33.54	
923.0	0.70	288.40	923.0	3.6	-3.4	-3.7	0.33	0.21	-25.00	

<b>Company:</b>	PDC Energy Inc. DJ Basin	<b>Local Co-ordinate Reference:</b>	Well Ehrlich 5J-203
<b>Project:</b>	SEC.5-T5N-R64W	<b>TVD Reference:</b>	WELL @ 4664.0ft (Original Well Elev)
<b>Site:</b>	Ehrlich 5N64W5J Pad Sec.5-T5N-R64W	<b>MD Reference:</b>	WELL @ 4664.0ft (Original Well Elev)
<b>Well:</b>	Ehrlich 5J-203	<b>North Reference:</b>	True
<b>Wellbore:</b>	Wellbore #1	<b>Survey Calculation Method:</b>	Minimum Curvature
<b>Design:</b>	Wellbore #1	<b>Database:</b>	US_EDM

Survey										
Measured Depth (ft)	Inclination (°)	Azimuth (°)	Vertical Depth (ft)	+N-S (ft)	+E-W (ft)	Vertical Section (ft)	Dogleg Rate (°/100usft)	Build Rate (°/100usft)	Turn Rate (°/100usft)	
1,018.0	1.60	2.00	1,018.0	5.1	-3.9	-5.2	1.64	0.95	77.47	
1,115.0	3.30	31.70	1,114.9	8.8	-2.4	-8.9	2.13	1.75	30.62	
1,211.0	4.40	44.20	1,210.7	13.8	1.6	-13.8	1.43	1.15	13.02	
1,307.0	6.10	51.60	1,306.3	19.6	8.2	-19.3	1.90	1.77	7.71	
1,403.0	7.30	45.80	1,401.6	27.1	16.6	-26.5	1.43	1.25	-6.04	
1,498.0	6.10	41.20	1,495.9	35.1	24.2	-34.2	1.38	-1.26	-4.84	
1,605.0	6.20	38.00	1,602.3	43.9	31.5	-42.8	0.33	0.09	-2.99	
1,692.0	4.60	32.60	1,688.9	50.5	36.3	-49.3	1.93	-1.84	-6.21	
1,788.0	7.00	38.60	1,784.4	58.4	42.0	-56.9	2.58	2.50	6.25	
1,883.0	6.80	35.60	1,878.8	67.5	48.9	-65.7	0.43	-0.21	-3.16	
1,979.0	6.40	30.00	1,974.1	76.7	54.9	-74.8	0.79	-0.42	-5.83	
2,075.0	9.00	39.60	2,069.3	87.1	62.3	-84.9	3.01	2.71	10.00	
2,171.0	8.80	37.90	2,164.1	98.7	71.6	-96.2	0.34	-0.21	-1.77	
2,266.0	8.80	40.20	2,258.0	110.0	80.8	-107.2	0.37	0.00	2.42	
2,362.0	8.10	37.30	2,352.9	121.0	89.6	-117.8	0.85	-0.73	-3.02	
2,458.0	8.30	38.00	2,448.0	131.8	98.0	-128.4	0.23	0.21	0.73	
2,554.0	7.60	37.40	2,543.0	142.3	106.1	-138.6	0.73	-0.73	-0.63	
2,650.0	7.10	33.50	2,638.2	152.3	113.2	-148.3	0.74	-0.52	-4.06	
2,746.0	7.30	32.40	2,733.5	162.4	119.8	-158.2	0.25	0.21	-1.15	
2,841.0	6.90	35.10	2,827.8	172.2	126.3	-167.8	0.55	-0.42	2.84	
2,937.0	6.70	31.40	2,923.1	181.7	132.5	-177.0	0.50	-0.21	-3.85	
3,033.0	6.70	50.40	3,018.4	190.0	139.8	-185.1	2.30	0.00	19.79	
3,129.0	6.70	48.90	3,113.8	197.3	148.3	-192.1	0.18	0.00	-1.56	
3,225.0	6.30	45.80	3,209.2	204.6	156.3	-199.2	0.55	-0.42	-3.23	
3,321.0	6.20	46.50	3,304.6	211.9	163.8	-206.1	0.13	-0.10	0.73	
3,417.0	5.90	44.40	3,400.1	219.0	171.0	-213.0	0.39	-0.31	-2.19	
3,512.0	5.10	45.60	3,494.6	225.4	177.5	-219.2	0.85	-0.84	1.26	
3,608.0	5.90	32.20	3,590.2	232.6	183.2	-226.2	1.57	0.83	-13.96	
3,704.0	5.70	33.70	3,685.7	240.7	188.4	-234.1	0.26	-0.21	1.56	
3,799.0	5.70	31.90	3,780.2	248.6	193.5	-241.9	0.19	0.00	-1.89	
3,895.0	5.70	31.90	3,875.7	256.7	198.6	-249.8	0.00	0.00	0.00	
3,991.0	5.50	36.30	3,971.3	264.5	203.8	-257.4	0.49	-0.21	4.58	
4,087.0	5.20	30.00	4,066.9	272.0	208.7	-264.7	0.69	-0.31	-6.56	
4,182.0	4.70	41.90	4,161.5	278.6	213.5	-271.1	1.20	-0.53	12.53	
4,278.0	4.10	42.60	4,257.2	284.0	218.4	-276.4	0.63	-0.63	0.73	
4,373.0	4.80	32.10	4,352.0	289.9	222.8	-282.1	1.13	0.74	-11.05	
4,469.0	4.60	34.50	4,447.6	296.5	227.2	-288.5	0.29	-0.21	2.50	
4,564.0	4.00	31.70	4,542.4	302.4	231.1	-294.4	0.67	-0.63	-2.95	
4,660.0	3.80	25.60	4,638.1	308.2	234.2	-300.0	0.48	-0.21	-6.35	
4,756.0	4.10	36.30	4,733.9	313.8	237.6	-305.5	0.83	0.31	11.15	
4,852.0	2.10	57.60	4,829.8	317.5	241.1	-309.1	2.37	-2.08	22.19	
4,947.0	1.10	113.50	4,924.7	318.1	243.4	-309.6	1.83	-1.05	58.84	
5,043.0	1.30	114.00	5,020.7	317.3	245.3	-308.7	0.21	0.21	0.52	
5,138.0	1.10	2.20	5,115.7	317.7	246.3	-309.1	2.10	-0.21	-117.68	

<b>Company:</b>	PDC Energy Inc. DJ Basin	<b>Local Co-ordinate Reference:</b>	Well Ehrlich 5J-203
<b>Project:</b>	SEC.5-T5N-R64W	<b>TVD Reference:</b>	WELL @ 4664.0ft (Original Well Elev)
<b>Site:</b>	Ehrlich 5N64W5J Pad Sec.5-T5N-R64W	<b>MD Reference:</b>	WELL @ 4664.0ft (Original Well Elev)
<b>Well:</b>	Ehrlich 5J-203	<b>North Reference:</b>	True
<b>Wellbore:</b>	Wellbore #1	<b>Survey Calculation Method:</b>	Minimum Curvature
<b>Design:</b>	Wellbore #1	<b>Database:</b>	US_EDM

Survey										
Measured Depth (ft)	Inclination (°)	Azimuth (°)	Vertical Depth (ft)	+N/-S (ft)	+E/-W (ft)	Vertical Section (ft)	Dogleg Rate (°/100usft)	Build Rate (°/100usft)	Turn Rate (°/100usft)	
5,234.0	1.10	353.90	5,211.7	319.6	246.2	-311.0	0.17	0.00	-8.65	
5,330.0	1.40	354.30	5,307.7	321.7	246.0	-313.0	0.31	0.31	0.42	
5,426.0	0.40	264.60	5,403.7	322.8	245.5	-314.2	1.51	-1.04	-93.44	
5,522.0	0.60	284.00	5,499.7	322.9	244.7	-314.3	0.27	0.21	20.21	
5,618.0	0.50	263.40	5,595.6	323.0	243.8	-314.4	0.23	-0.10	-21.46	
5,713.0	0.40	230.90	5,690.6	322.7	243.2	-314.2	0.28	-0.11	-34.21	
5,809.0	0.40	187.10	5,786.6	322.2	242.9	-313.7	0.31	0.00	-45.63	
5,904.0	0.40	169.00	5,881.6	321.5	242.9	-313.0	0.13	0.00	-19.05	
6,000.0	0.60	140.00	5,977.6	320.8	243.3	-312.3	0.33	0.21	-30.21	
6,096.0	8.40	191.70	6,073.3	313.5	242.2	-305.0	8.38	8.13	53.85	
6,192.0	13.80	182.40	6,167.5	295.2	240.3	-286.8	5.91	5.63	-9.69	
6,287.0	19.00	179.90	6,258.6	268.4	239.8	-260.0	5.52	5.47	-2.63	
6,383.0	24.80	180.40	6,347.6	232.6	239.7	-224.3	6.04	6.04	0.52	
6,479.0	33.30	182.00	6,431.4	186.1	238.6	-177.8	8.89	8.85	1.67	
6,575.0	43.10	181.10	6,506.8	126.8	237.1	-118.6	10.22	10.21	-0.94	
6,671.0	50.90	181.30	6,572.2	56.6	235.6	-48.5	8.13	8.13	0.21	
6,767.0	57.40	180.40	6,628.4	-21.1	234.5	29.1	6.81	6.77	-0.94	
6,862.0	64.40	180.10	6,674.6	-104.1	234.1	112.0	7.37	7.37	-0.32	
6,894.8	67.17	180.28	6,688.0	-134.0	234.0	141.9	8.45	8.44	0.54	
<b>Crosses 460' Setback - 460'FNL &amp; 1333'FWL, SEC.5</b>										
6,958.0	72.50	180.60	6,709.8	-193.3	233.6	201.2	8.45	8.44	0.51	
7,053.0	78.90	180.60	6,733.3	-285.3	232.6	293.1	6.74	6.74	0.00	
7,149.0	84.60	179.20	6,747.0	-380.3	232.8	388.0	6.11	5.94	-1.46	
7,245.0	88.60	179.60	6,752.7	-476.1	233.8	483.8	4.19	4.17	0.42	
7,341.0	90.10	180.10	6,753.8	-572.1	234.0	579.7	1.65	1.56	0.52	
7,436.0	90.00	179.40	6,753.7	-667.1	234.4	674.7	0.74	-0.11	-0.74	
7,531.0	89.80	181.00	6,753.9	-762.0	234.1	769.6	1.70	-0.21	1.68	
<b>Deepest TVD Drilled - 6753.9' TVD</b>										
7,627.0	91.50	182.50	6,752.8	-858.0	231.2	865.4	2.36	1.77	1.56	
7,722.0	91.60	180.30	6,750.2	-952.9	228.9	960.2	2.32	0.11	-2.32	
7,818.0	91.50	179.90	6,747.6	-1,048.9	228.7	1,056.1	0.43	-0.10	-0.42	
7,913.0	91.70	180.10	6,745.0	-1,143.9	228.7	1,151.0	0.30	0.21	0.21	
8,009.0	91.00	179.00	6,742.7	-1,239.8	229.4	1,246.9	1.36	-0.73	-1.15	
8,105.0	89.30	178.80	6,742.5	-1,335.8	231.3	1,342.9	1.78	-1.77	-0.21	
8,201.0	89.70	178.30	6,743.3	-1,431.8	233.7	1,438.9	0.67	0.42	-0.52	
8,297.0	90.60	177.60	6,743.1	-1,527.7	237.2	1,534.9	1.19	0.94	-0.73	
8,392.0	90.10	179.70	6,742.5	-1,622.7	239.4	1,629.9	2.27	-0.53	2.21	
8,488.0	90.70	179.20	6,741.8	-1,718.7	240.3	1,725.9	0.81	0.63	-0.52	
8,584.0	89.00	179.90	6,742.1	-1,814.7	241.1	1,821.8	1.92	-1.77	0.73	
8,679.0	89.20	179.60	6,743.6	-1,909.6	241.5	1,916.8	0.38	0.21	-0.32	
8,802.0	89.30	179.40	6,745.2	-2,032.6	242.6	2,039.7	0.18	0.08	-0.16	
8,898.0	89.30	179.20	6,746.3	-2,128.6	243.7	2,135.7	0.21	0.00	-0.21	
8,994.0	90.80	179.90	6,746.3	-2,224.6	244.5	2,231.7	1.72	1.56	0.73	

<b>Company:</b>	PDC Energy Inc. DJ Basin	<b>Local Co-ordinate Reference:</b>	Well Ehrlich 5J-203
<b>Project:</b>	SEC.5-T5N-R64W	<b>TVD Reference:</b>	WELL @ 4664.0ft (Original Well Elev)
<b>Site:</b>	Ehrlich 5N64W5J Pad Sec.5-T5N-R64W	<b>MD Reference:</b>	WELL @ 4664.0ft (Original Well Elev)
<b>Well:</b>	Ehrlich 5J-203	<b>North Reference:</b>	True
<b>Wellbore:</b>	Wellbore #1	<b>Survey Calculation Method:</b>	Minimum Curvature
<b>Design:</b>	Wellbore #1	<b>Database:</b>	US_EDM

Survey										
Measured Depth (ft)	Inclination (°)	Azimuth (°)	Vertical Depth (ft)	+N/-S (ft)	+E/-W (ft)	Vertical Section (ft)	Dogleg Rate (°/100usft)	Build Rate (°/100usft)	Turn Rate (°/100usft)	
9,089.0	90.90	179.00	6,744.8	-2,319.6	245.4	2,326.6	0.95	0.11	-0.95	
9,185.0	89.50	179.60	6,744.5	-2,415.6	246.6	2,422.6	1.59	-1.46	0.63	
9,281.0	91.50	180.40	6,743.7	-2,511.6	246.6	2,518.5	2.24	2.08	0.83	
9,377.0	91.70	180.10	6,741.0	-2,607.5	246.1	2,614.4	0.38	0.21	-0.31	
9,472.0	92.10	179.60	6,737.8	-2,702.5	246.4	2,709.3	0.67	0.42	-0.53	
9,568.0	91.60	181.00	6,734.7	-2,798.4	245.9	2,805.2	1.55	-0.52	1.46	
9,663.0	91.80	180.30	6,731.9	-2,893.4	244.8	2,900.1	0.77	0.21	-0.74	
9,759.0	91.10	179.70	6,729.5	-2,989.3	244.8	2,996.0	0.96	-0.73	-0.63	
9,855.0	90.00	181.10	6,728.6	-3,085.3	244.1	3,091.9	1.85	-1.15	1.46	
9,951.0	90.30	180.60	6,728.3	-3,181.3	242.7	3,187.8	0.61	0.31	-0.52	
10,047.0	90.60	180.60	6,727.6	-3,277.3	241.7	3,283.7	0.31	0.31	0.00	
10,142.0	90.70	180.10	6,726.5	-3,372.3	241.1	3,378.6	0.54	0.11	-0.53	
10,238.0	90.70	179.60	6,725.3	-3,468.3	241.4	3,474.5	0.52	0.00	-0.52	
10,334.0	90.10	179.20	6,724.6	-3,564.3	242.4	3,570.5	0.75	-0.63	-0.42	
10,430.0	89.90	178.50	6,724.6	-3,660.3	244.3	3,666.5	0.76	-0.21	-0.73	
10,525.0	89.50	179.90	6,725.1	-3,755.3	245.6	3,761.5	1.53	-0.42	1.47	
10,621.0	89.40	179.60	6,726.1	-3,851.2	246.1	3,857.4	0.33	-0.10	-0.31	
10,717.0	89.70	180.80	6,726.8	-3,947.2	245.7	3,953.3	1.29	0.31	1.25	
10,813.0	90.20	182.40	6,726.9	-4,043.2	243.0	4,049.2	1.75	0.52	1.67	
10,908.0	90.80	181.80	6,726.1	-4,138.1	239.6	4,143.9	0.89	0.63	-0.63	
11,004.0	91.10	181.00	6,724.5	-4,234.1	237.2	4,239.7	0.89	0.31	-0.83	
11,100.0	91.40	179.90	6,722.4	-4,330.1	236.5	4,335.6	1.19	0.31	-1.15	
11,195.0	91.70	179.90	6,719.8	-4,425.0	236.6	4,430.5	0.32	0.32	0.00	
11,291.0	90.50	180.80	6,718.0	-4,521.0	236.0	4,526.4	1.56	-1.25	0.94	
11,386.0	90.90	179.60	6,716.8	-4,616.0	235.7	4,621.4	1.33	0.42	-1.26	
11,482.0	91.40	178.70	6,714.9	-4,712.0	237.1	4,717.3	1.07	0.52	-0.94	
11,577.0	90.70	179.60	6,713.1	-4,806.9	238.5	4,812.3	1.20	-0.74	0.95	
11,672.0	91.30	178.80	6,711.5	-4,901.9	239.9	4,907.3	1.05	0.63	-0.84	
11,768.0	90.00	180.40	6,710.4	-4,997.9	240.5	5,003.2	2.15	-1.35	1.67	
11,864.0	90.70	180.10	6,709.8	-5,093.9	240.1	5,099.1	0.79	0.73	-0.31	
11,959.0	91.30	179.20	6,708.2	-5,188.9	240.7	5,194.1	1.14	0.63	-0.95	
12,055.0	90.40	181.00	6,706.7	-5,284.9	240.5	5,290.0	2.10	-0.94	1.88	
12,150.0	91.10	180.40	6,705.5	-5,379.8	239.4	5,384.9	0.97	0.74	-0.63	
12,246.0	89.40	181.10	6,705.1	-5,475.8	238.1	5,480.8	1.92	-1.77	0.73	
12,342.0	89.50	180.80	6,706.0	-5,571.8	236.5	5,576.6	0.33	0.10	-0.31	
12,437.0	89.30	180.60	6,707.0	-5,666.8	235.4	5,671.5	0.30	-0.21	-0.21	
12,533.0	89.90	180.30	6,707.7	-5,762.8	234.6	5,767.4	0.70	0.63	-0.31	
12,629.0	90.40	179.60	6,707.4	-5,858.8	234.7	5,863.4	0.90	0.52	-0.73	
12,724.0	90.90	179.20	6,706.3	-5,953.8	235.7	5,958.4	0.67	0.53	-0.42	
12,820.0	91.50	178.80	6,704.3	-6,049.7	237.4	6,054.3	0.75	0.63	-0.42	
12,916.0	90.10	180.10	6,703.0	-6,145.7	238.3	6,150.3	1.99	-1.46	1.35	
13,012.0	90.40	179.60	6,702.6	-6,241.7	238.5	6,246.2	0.61	0.31	-0.52	
13,107.0	90.30	178.50	6,702.0	-6,336.7	240.1	6,341.2	1.16	-0.11	-1.16	
13,202.0	90.10	179.40	6,701.6	-6,431.7	241.9	6,436.2	0.97	-0.21	0.95	

<b>Company:</b>	PDC Energy Inc. DJ Basin	<b>Local Co-ordinate Reference:</b>	Well Ehrlich 5J-203
<b>Project:</b>	SEC.5-T5N-R64W	<b>TVD Reference:</b>	WELL @ 4664.0ft (Original Well Elev)
<b>Site:</b>	Ehrlich 5N64W5J Pad Sec.5-T5N-R64W	<b>MD Reference:</b>	WELL @ 4664.0ft (Original Well Elev)
<b>Well:</b>	Ehrlich 5J-203	<b>North Reference:</b>	True
<b>Wellbore:</b>	Wellbore #1	<b>Survey Calculation Method:</b>	Minimum Curvature
<b>Design:</b>	Wellbore #1	<b>Database:</b>	US_EDM

Measured Depth (ft)	Inclination (°)	Azimuth (°)	Vertical Depth (ft)	+N/-S (ft)	+E/-W (ft)	Vertical Section (ft)	Dogleg Rate (°/100usft)	Build Rate (°/100usft)	Turn Rate (°/100usft)
13,298.0	89.90	179.60	6,701.6	-6,527.7	242.7	6,532.2	0.29	-0.21	0.21
13,393.0	90.20	180.30	6,701.6	-6,622.7	242.8	6,627.1	0.80	0.32	0.74
13,489.0	90.60	179.90	6,700.9	-6,718.7	242.6	6,723.1	0.59	0.42	-0.42
13,585.0	90.80	179.90	6,699.7	-6,814.7	242.8	6,819.0	0.21	0.21	0.00
13,728.0	91.20	178.80	6,697.2	-6,957.6	244.4	6,961.9	0.82	0.28	-0.77
13,783.0	91.20	178.80	6,696.1	-7,012.6	245.6	7,016.9	0.00	0.00	0.00

Target Name	Dip Angle (°)	Dip Dir. (°)	TVD (ft)	+N/-S (ft)	+E/-W (ft)	Northing (usft)	Easting (usft)	Latitude	Longitude
SHL 326'FNL, 1099'FWL - hit/miss target - Shape - Point	0.00	0.00	1.0	0.0	0.0	1,402,390.88	3,256,234.70	40.434314	-104.579499
BHL 2132'FNL, 1381'FWL - survey misses target center by 5.3ft at 13782.9ft MD (6696.1 TVD, -7012.6 N, 245.6 E) - Point	0.00	0.00	6,695.0	-7,012.6	240.3	1,395,381.36	3,256,547.78	40.415065	-104.578636

Measured Depth (ft)	Vertical Depth (ft)	Local Coordinates +N/-S (ft)	Local Coordinates +E/-W (ft)	Comment
6,894.8	6,688.0	-134.0	234.0	Crosses 460' Setback - 460'FNL & 1333'FWL, SEC.5
7,531.0	6,753.9	-762.0	234.1	Deepest TVD Drilled - 6753.9' TVD

Checked By: \_\_\_\_\_ Approved By: \_\_\_\_\_ Date: \_\_\_\_\_