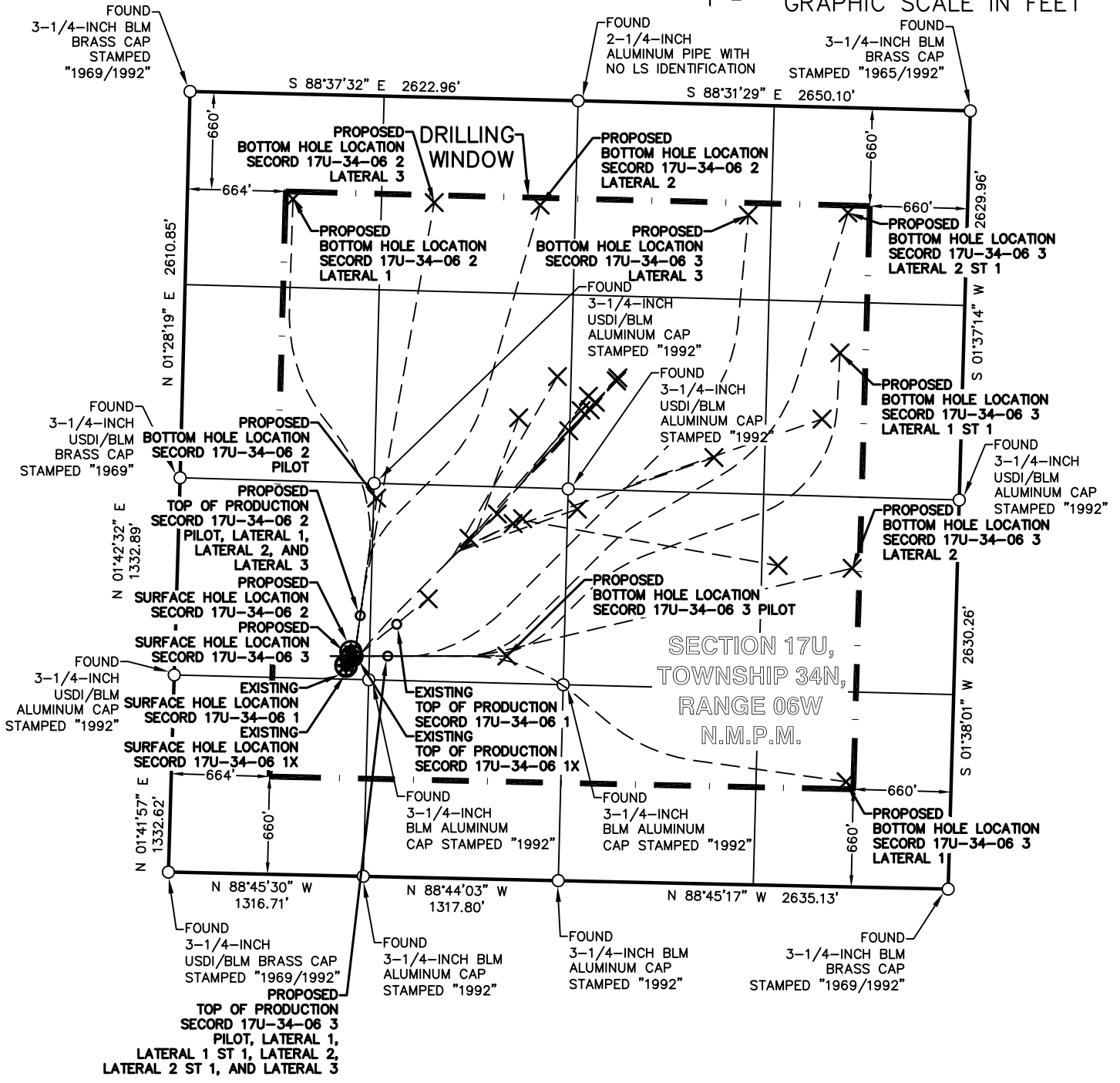
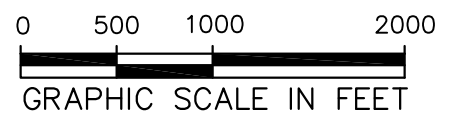


LEGEND
 FOUND MONUMENT ○
 SURFACE HOLE LOCATION ⊗
 BOTTOM HOLE LOCATION ×



SURVEY NOTES

1. SEE SHEETS 2 AND 3 OF 3 FOR COORDINATE TABLE AND SURVEY NOTES.

	BP AMERICA PRODUCTION COMPANY US LOWER 48 ONSHORE
	MULTI-WELL PLAN
SECOND 17U-34-06 2 AND SECOND 17U-34-06 3 PART OF SECTION 17U, TOWNSHIP 34N, RANGE 06W, N.M.P.M. LA PLATA COUNTY, COLORADO	

DRAWN BY CFW/RLM	CHECKED BY RLM	SCALE 1"=1000'	DATE 03/11/2018	SHEET 1 OF 3	REVISION
---------------------	-------------------	-------------------	--------------------	-----------------	----------


SECOND 17U-34-06 2 WELLBORE DISTANCES	
SHL TO TOP	541'
TOP TO BHL PILOT	803'
TOP TO BHL LATERAL 1	2,950'
TOP TO BHL LATERAL 2	3,102'
TOP TO BHL LATERAL 3	2,836'

SEC 17U-34-06 2	CSZ NAD'83	NAD'83	TIES	SEC / TWP / RNG	ELEVATION
PROPOSED SURFACE HOLE LOCATION (SHL)	N (Y) = 1,196,144.95' E (X) = 2,409,098.88'	LAT. = 37.18772529°N LON. = 107.52854860°W	FSL = 1516' FWL = 1188'	SEC 17U, TWP 34N, RNG 06W	EXISTING GROUND 7221.42'
PROPOSED TOP OF PRODUCTION (TOP) PILOT, LATERAL 1, LATERAL 2, AND LATERAL 3	N (Y) = 1,196,388.09' E (X) = 2,409,162.53'	LAT. = 37.18839668°N LON. = 107.52834828°W	FSL = 1760' FWL = 1244'	SEC 17U, TWP 34N, RNG 06W	PROPOSED GRADE 7220.96'
PROPOSED BOTTOM HOLE LOCATION (BHL) PILOT	N (Y) = 1,197,182.53' E (X) = 2,409,274.18'	LAT. = 37.19058467°N LON. = 107.52802431°W	FSL = 2557' FWL = 1332'	SEC 17U, TWP 34N, RNG 06W	
PROPOSED BOTTOM HOLE LOCATION (BHL) LATERAL 1	N (Y) = 1,199,202.89' E (X) = 2,408,708.09'	LAT. = 37.19609830°N LON. = 107.53011786°W	FNL = 710' FWL = 714'	SEC 17U, TWP 34N, RNG 06W	
PROPOSED BOTTOM HOLE LOCATION (BHL) LATERAL 2	N (Y) = 1,199,161.34' E (X) = 2,410,377.92'	LAT. = 37.19608373°N LON. = 107.52438344°W	FNL = 712' FWL = 2384'	SEC 17U, TWP 34N, RNG 06W	
PROPOSED BOTTOM HOLE LOCATION (BHL) LATERAL 3	N (Y) = 1,199,179.15' E (X) = 2,409,662.28'	LAT. = 37.19609002°N LON. = 107.52684105°W	FNL = 711' FWL = 1668'	SEC 17U, TWP 34N, RNG 06W	

SECOND 17U-34-06 3 WELLBORE DISTANCES	
SHL TO TOP	533'
TOP TO BHL PILOT	804'
TOP TO BHL LATERAL 1	3,298'
TOP TO BHL LATERAL 1 ST 1	4,095'
TOP TO BHL LATERAL 2	3,205'
TOP TO BHL LATERAL 2 ST 1	4,697'
TOP TO BHL LATERAL 3	4,155'

SEC 17U-34-06 3	CSZ NAD'83	NAD'83	TIES	SEC / TWP / RNG	ELEVATION
PROPOSED SURFACE HOLE LOCATION (SHL)	N (Y) = 1,196,114.81' E (X) = 2,409,107.39'	LAT. = 37.18764304°N LON. = 107.52851715°W	FSL = 1486' FWL = 1197'	SEC 17U, TWP 34N, RNG 06W	EXISTING GROUND 7221.64'
PROPOSED TOP OF PRODUCTION (TOP) PILOT, LATERAL 1, LATERAL 1 ST 1, LATERAL 2, LATERAL 2 ST 1, AND LATERAL 3	N (Y) = 1,196,114.81' E (X) = 2,409,348.36'	LAT. = 37.18765740°N LON. = 107.52769016°W	FSL = 1491' FWL = 1438'	SEC 17U, TWP 34N, RNG 06W	PROPOSED GRADE 7220.96'
PROPOSED BOTTOM HOLE LOCATION (BHL) PILOT	N (Y) = 1,196,114.81' E (X) = 2,410,152.73'	LAT. = 37.18770532°N LON. = 107.52492965°W	FSL = 1509' FWL = 2242'	SEC 17U, TWP 34N, RNG 06W	
PROPOSED BOTTOM HOLE LOCATION (BHL) LATERAL 1	N (Y) = 1,195,265.86' E (X) = 2,412,445.06'	LAT. = 37.18551051°N LON. = 107.51699967°W	FSL = 710' FEL = 710'	SEC 17U, TWP 34N, RNG 06W	
PROPOSED BOTTOM HOLE LOCATION (BHL) LATERAL 1 ST 1	N (Y) = 1,198,163.40' E (X) = 2,412,403.30'	LAT. = 37.19346397°N LON. = 107.51735777°W	FNL = 1657' FEL = 834'	SEC 17U, TWP 34N, RNG 06W	
PROPOSED BOTTOM HOLE LOCATION (BHL) LATERAL 2	N (Y) = 1,196,708.02' E (X) = 2,412,486.02'	LAT. = 37.18947276°N LON. = 107.51696599°W	FSL = 2153' FEL = 710'	SEC 17U, TWP 34N, RNG 06W	
PROPOSED BOTTOM HOLE LOCATION (BHL) LATERAL 2 ST 1	N (Y) = 1,199,109.61' E (X) = 2,412,457.32'	LAT. = 37.19606523°N LON. = 107.51724251°W	FNL = 710' FEL = 807'	SEC 17U, TWP 34N, RNG 06W	
PROPOSED BOTTOM HOLE LOCATION (BHL) LATERAL 3	N (Y) = 1,199,095.20' E (X) = 2,411,784.18'	LAT. = 37.19598572°N LON. = 107.51955185°W	FNL = 742' FEL = 1479'	SEC 17U, TWP 34N, RNG 06W	

SEC 17U-34-06 1	CSZ NAD'83	NAD'83	TIES	SEC / TWP / RNG	ELEVATION
EXISTING SURFACE HOLE LOCATION (SHL)	N (Y) = 1,196,046.10' E (X) = 2,409,067.20'	LAT. = 37.18745198°N LON. = 107.52864995°W	FSL = 1416' FWL = 1159'	SEC 17U, TWP 34N, RNG 06W	EXISTING GROUND 7220.96'
EXISTING TOP OF PRODUCTION (TOP)	N (Y) = 1,196,330.36' E (X) = 2,409,408.81'	LAT. = 37.18825285°N LON. = 107.52749876°W	FSL = 1708' FWL = 1492'	SEC 17U, TWP 34N, RNG 06W	PROPOSED GRADE 7220.96'
EXISTING BOTTOM HOLE LOCATION (BHL)	N (Y) = 1,196,501.73' E (X) = 2,409,621.12'	LAT. = 37.18873604°N LON. = 107.52678290°W	FSL = 1884' FWL = 1699'	SEC 17U, TWP 34N, RNG 06W	


	BP AMERICA PRODUCTION COMPANY US LOWER 48 ONSHORE
	MULTI-WELL PLAN
SECOND 17U-34-06 2 AND SECOND 17U-34-06 3 PART OF SECTION 17U, TOWNSHIP 34N, RANGE 06W, N.M.P.M. LA PLATA COUNTY, COLORADO	

DRAWN BY CFW/RLM	CHECKED BY RLM	SCALE N/A	DATE 03/11/2018	SHEET 2 OF 3	REVISION
---------------------	-------------------	--------------	--------------------	-----------------	----------

SECORD 17U-34-06 1X	CSZ NAD'83	NAD'83	TIES	SEC / TWP / RNG	ELEVATION
EXISTING SURFACE HOLE LOCATION (SHL)	N (Y) = 1,196,053.92' E (X) = 2,409,064.88'	LAT. = 37.18873604°N LON. = 107.52678290°W	FSL = 1424' FWL = 1157'	SEC 17U, TWP 34N, RNG 06W	EXISTING GROUND 7221.02'
EXISTING TOP OF PRODUCTION (TOP)	N (Y) = 1,196,111.68' E (X) = 2,409,142.64'	LAT. = 37.18763654°N LON. = 107.52839594°W	FSL = 1484' FWL = 1233'	SEC 17U, TWP 34N, RNG 06W	PROPOSED GRADE 7220.96'
EXISTING BOTTOM HOLE LOCATION (BHL) MAIN LEG	N (Y) = 1,197,974.92' E (X) = 2,410,893.88'	LAT. = 37.19285681°N LON. = 107.52252434°W	FNL = 1885' FEL = 2338'	SEC 17U, TWP 34N, RNG 06W	
EXISTING BOTTOM HOLE LOCATION (BHL) MAIN LEG ST 1	N (Y) = 1,196,910.75' E (X) = 2,409,897.14'	LAT. = 37.18987555°N LON. = 107.52586606°W	FSL = 2299' FWL = 1963'	SEC 17U, TWP 34N, RNG 06W	
EXISTING BOTTOM HOLE LOCATION (BHL) MAIN LEG ST 2	N (Y) = 1,197,074.94' E (X) = 2,410,088.97'	LAT. = 37.19033780°N LON. = 107.52521992°W	FSL = 2467' FWL = 2150'	SEC 17U, TWP 34N, RNG 06W	
EXISTING BOTTOM HOLE LOCATION (BHL) MAIN LEG ST 3	N (Y) = 1,197,774.00' E (X) = 2,410,654.81'	LAT. = 37.19229092°N LON. = 107.52332992°W	FNL = 2092' FEL = 2571'	SEC 17U, TWP 34N, RNG 06W	
EXISTING BOTTOM HOLE LOCATION (BHL) MAIN LEG ST 4	N (Y) = 1,197,829.24' E (X) = 2,410,750.46'	LAT. = 37.19244828°N LON. = 107.52300575°W	FNL = 2034' FEL = 2477'	SEC 17U, TWP 34N, RNG 06W	
EXISTING BOTTOM HOLE LOCATION (BHL) MAIN LEG ST 5	N (Y) = 1,197,779.38' E (X) = 2,410,716.20'	LAT. = 37.19230934°N LON. = 107.52311962°W	FNL = 2085' FEL = 2510'	SEC 17U, TWP 34N, RNG 06W	
EXISTING BOTTOM HOLE LOCATION (BHL) MAIN LEG ST 6	N (Y) = 1,197,995.08' E (X) = 2,410,903.10'	LAT. = 37.19291272°N LON. = 107.52249419°W	FNL = 1864' FEL = 2329'	SEC 17U, TWP 34N, RNG 06W	
EXISTING BOTTOM HOLE LOCATION (BHL) MAIN LEG ST 7	N (Y) = 1,197,637.50' E (X) = 2,410,571.40'	LAT. = 37.19191116°N LON. = 107.52360604°W	FNL = 2230' FWL = 2617'	SEC 17U, TWP 34N, RNG 06W	
EXISTING BOTTOM HOLE LOCATION (BHL) MAIN LEG ST 8	N (Y) = 1,197,870.79' E (X) = 2,410,703.52'	LAT. = 37.19255958°N LON. = 107.52316994°W	FNL = 1994' FEL = 2525'	SEC 17U, TWP 34N, RNG 06W	
EXISTING BOTTOM HOLE LOCATION (BHL) MAIN LEG ST 9	N (Y) = 1,197,974.87' E (X) = 2,410,893.92'	LAT. = 37.19285668°N LON. = 107.52252420°W	FNL = 1885' FEL = 2338'	SEC 17U, TWP 34N, RNG 06W	
EXISTING BOTTOM HOLE LOCATION (BHL) LEG 1	N (Y) = 1,197,009.78' E (X) = 2,410,195.56'	LAT. = 37.19016523°N LON. = 107.52484925°W	FSL = 2405' FWL = 2258'	SEC 17U, TWP 34N, RNG 06W	
EXISTING BOTTOM HOLE LOCATION (BHL) LEG 1A	N (Y) = 1,197,043.06' E (X) = 2,410,259.77'	LAT. = 37.19026044°N LON. = 107.52463136°W	FSL = 2439' FWL = 2321'	SEC 17U, TWP 34N, RNG 06W	
EXISTING BOTTOM HOLE LOCATION (BHL) LEG 2	N (Y) = 1,197,107.47' E (X) = 2,410,629.41'	LAT. = 37.19045928°N LON. = 107.52336754°W	FSL = 2512' FEL = 2577'	SEC 17U, TWP 34N, RNG 06W	
EXISTING BOTTOM HOLE LOCATION (BHL) LEG 2A	N (Y) = 1,196,726.16' E (X) = 2,411,986.39'	LAT. = 37.18949293°N LON. = 107.51868206°W	FSL = 2160' FEL = 1210'	SEC 17U, TWP 34N, RNG 06W	
EXISTING BOTTOM HOLE LOCATION (BHL) LEG 3	N (Y) = 1,197,456.22' E (X) = 2,411,552.04'	LAT. = 37.19147170°N LON. = 107.52022694°W	FNL = 2386' FEL = 1665'	SEC 17U, TWP 34N, RNG 06W	
EXISTING BOTTOM HOLE LOCATION (BHL) LEG 3A	N (Y) = 1,197,716.35' E (X) = 2,412,282.84'	LAT. = 37.19222934°N LON. = 107.51773806°W	FNL = 2107' FEL = 942'	SEC 17U, TWP 34N, RNG 06W	
EXISTING BOTTOM HOLE LOCATION (BHL) LEG 4	N (Y) = 1,198,003.22' E (X) = 2,410,494.99'	LAT. = 37.19291079°N LON. = 107.52389549°W	FNL = 1867' FWL = 2531'	SEC 17U, TWP 34N, RNG 06W	
EXISTING BOTTOM HOLE LOCATION (BHL) LEG 4A	N (Y) = 1,197,724.95' E (X) = 2,410,233.03'	LAT. = 37.19213114°N LON. = 107.52477386°W	FNL = 2151' FWL = 2276'	SEC 17U, TWP 34N, RNG 06W	

SURVEY NOTES

1. BEARING BASIS FOR THIS SURVEY IS BASED ON THE NORTH AMERICAN DATUM OF 1983, COLORADO STATE PLANE COORDINATE SYSTEM, COLORADO SOUTH, ZONE 0503.
2. ELEVATION BASIS FOR THIS SURVEY IS BASED ON THE NORTH AMERICAN VERTICAL DATUM OF 1988 (GEOID12A).
3. SURVEYED IN THE FIELD ON 11/02/2017.
4. BEARINGS AND DISTANCE SHOWN ARE MEASURED IN THE FIELD UNLESS OTHERWISE NOTED.
5. ALL MEASURED DISTANCES SHOWN ARE GRID USING A COMBINED SCALE FACTOR 0.99968170.
6. GPS INSTRUMENT OPERATOR: ROBERT HINOJOSA
7. GPS PDOP VALUE: 1.5/1.5

 bp	BP AMERICA PRODUCTION COMPANY US LOWER 48 ONSHORE
MULTI-WELL PLAN	
SECORD 17U-34-06 2 AND SECORD 17U-34-06 3 PART OF SECTION 17U, TOWNSHIP 34N, RANGE 06W, N.M.P.M. LA PLATA COUNTY, COLORADO	

DRAWN BY CFW/RLM	CHECKED BY RLM	SCALE N/A	DATE 03/11/2018	SHEET 3 OF 3	REVISION
---------------------	-------------------	--------------	--------------------	-----------------	----------