



410 17th Street, Suite 1400
Denver, CO 80202
(720) 440-6100 phone
(720) 305-0804 fax

Bonanzacrk.com

February 6, 2018

State of Colorado
Oil and Gas Conservation Commission
1120 Lincoln Street, Suite 801
Denver, CO 80203

RE: Proposed Wellbore Spacing Unit
Whitetail A-4-9XRLNB
Niobrara New Drill
Lot 3, Section 4, Township 6N, Range 62W, 6th PM
Weld County, Colorado

Dear Director Lepore,

Bonanza Creek Energy Operating Company, LLC. ("Bonanza Creek") is planning to drill the above captioned well in accordance with the provisions of Colorado Oil and Gas Conservation Commission (COGCC) Rule 318A.e.

Bonanza Creek's proposed wellbore spacing unit consists of:

Township 6N, Range 62W (Weld County):

Section 4: W2W2
Section 5: E2E2
Section 8: E2E2
Section 9: W2W2

Total acres: 640 ac

The 30 day notification time period has passed and we have not yet received any objections to such well locations or proposed spacing unit, therefore Bonanza Creek hereby requests the Director to approve the above mentioned well. Bonanza Creek respectfully requests the COGCC review the enclosed map illustrating the proposed wellbore spacing unit.

Regards,
Bonanza Creek Energy Operating Company, LLC.

Brian Dodek, P.G.
Manager – Environmental & Regulatory Compliance

2.5" AC ILLEGIBLE
LAT 40.52317°N
LONG 104.33701°W

2.5" AC PLS9644
LAT 40.52328°N
LONG 104.32753°W

2.5" AC PLS11648
LAT 40.52340°N
LONG 104.31805°W

N88°23'05"E - 2635.01' (M)

S88°20'27"W - 2637.46' (M)

2009'

283'

2009.89'

S83° 02' 07.2"W

SURFACE LOCATION

LOT 3

LOT 2

LOT 1

TARGET 1
470'FNL; 10'FWL

Sec. 5

4804.596'
S00° 53' 13.17"E

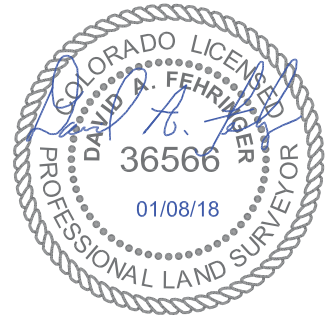
S00° 53' 13.17"E - 5274.63' (M)

MID LATERAL
0'FNL; 10'FWL
2.5" AC 17492
LAT 40.50870°N
LONG 104.33696°W

N88°23'32"E - 5285.56' (M)

2.5" AC 11648
LAT 40.50891°N
LONG 104.31796°W

NOTE: Under Colorado law,
you must commence any legal
action based upon any defect
in this certificate within three
years after defect is
discovered. In no event, may
any action based upon any
defect in this survey be
commenced more than ten
years after date of this
certificate shown hereon.
(13-80105 C.R.S.)



CERTIFICATE OF SURVEYOR

I, David A. Fehring of Lander, Wyoming hereby certify that this well location certificate was prepared from notes taken during an actual survey on AUGUST 10, 2015; and that it correctly shows the drilling location of BONANZA CREEK ENERGY, INC., WHITETAIL A-4-9XRLNB as staked during said survey. This map does not represent a boundary survey or an improvement location plat and should not be used for the establishment of boundary lines.

WELL COORDINATES

A-4-9XRLNB	NAD 83		COLORADO NORTH NAD83	
	LATITUDE	LONGITUDE	NORTHING	EASTING
SURFACE	40.5224736	-104.3298031	1435327.18	3325320.37
TARGET 1	40.5218767	-104.3369903	1435083.47	3323325.31
MID LATERAL	40.5086885	-104.3369494	1430279.45	3323399.68
BOTTOM HOLE	40.4955020	-104.3369384	1425476.00	3323465.74

NOTES:

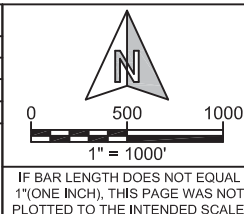
- All bearings are GRID based upon the Colorado State Plane Coordinate System, North Zone, NAD83(2011) derived from post-processed static GPS observations.
- Distances are at GRID
- Vertical Datum is NAVD88 based upon GPS observations
- PDOP value equals 1.2.
- GPS operator: Mike Johnson.
- Undisturbed ground elevation at wellhead = 4862.8'
- (M) Measured distance;
- Nearest Cultural Distances
 - Buildings: 2133'+/-
 - Building Unit: 2133'+/-
 - High Occupancy Building Unit: 5280'+
 - Designated Outside Activity Area: 5280'+
 - Public Road: 267'+/-
 - Above Ground Utility: 252 '+/-
 - Railroad: 5280'+
 - Property Line: 283' +/-

SHEET NO:

1 of 2



Drawn By: MAM
Checked By: DAF
Date: 01/08/18
Revision:
Date:
Explanation:

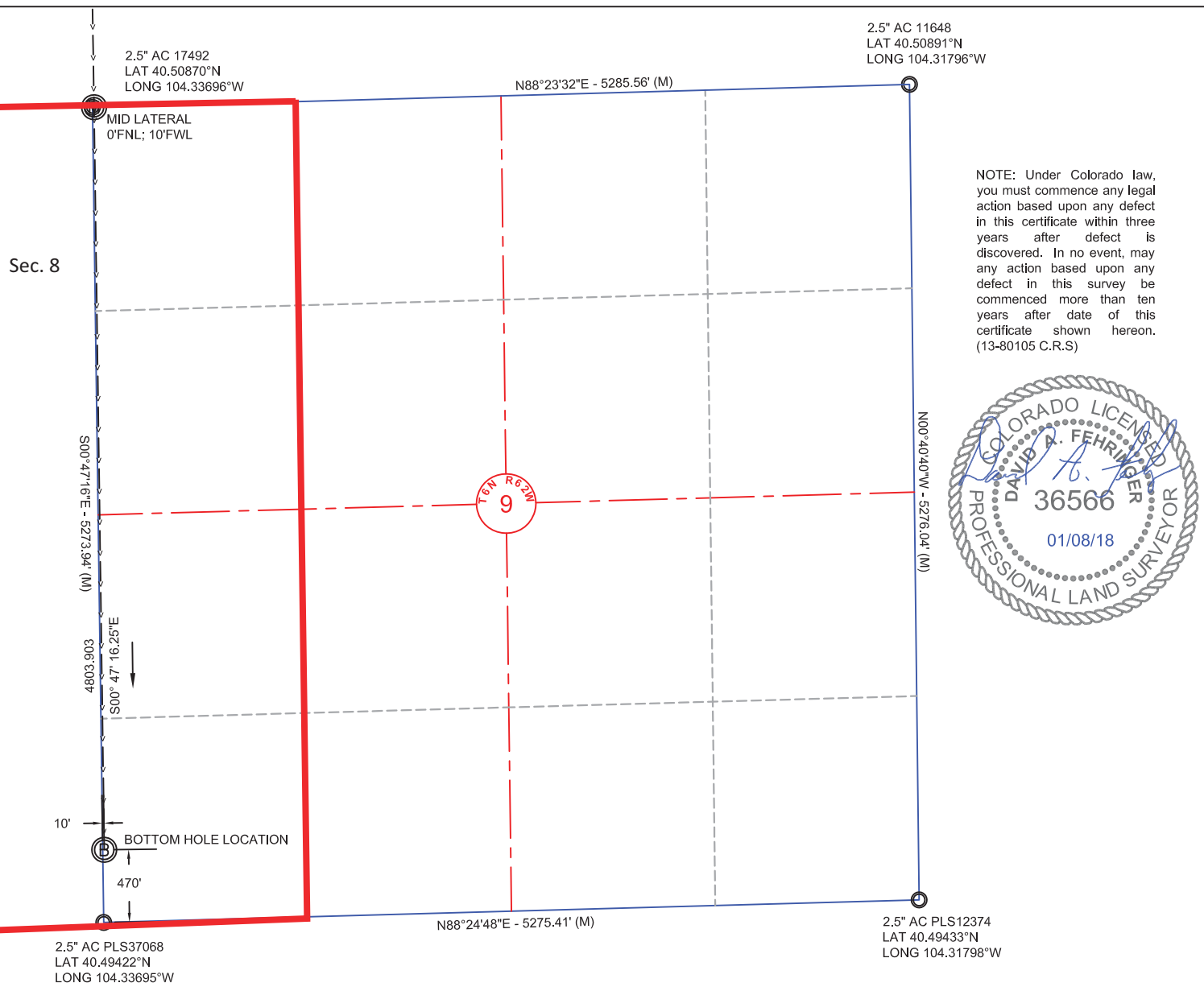


WELL LOCATION CERTIFICATE

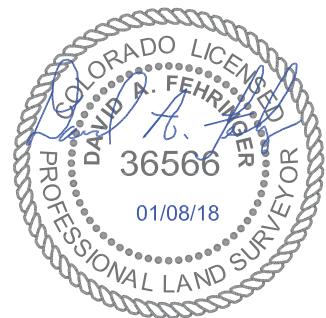
WHITETAIL A-4-9XRLNB
NE $\frac{1}{4}$ NW $\frac{1}{4}$ (LOT 3), SECTION 4,
T.6N., R.62W., 6th PM
WELD COUNTY, COLORADO



410 17th Street
Denver, CO 80202
(720) 440-6100



NOTE: Under Colorado law, you must commence any legal action based upon any defect in this certificate within three years after defect is discovered. In no event, may any action based upon any defect in this survey be commenced more than ten years after date of this certificate shown hereon. (13-80105 C.R.S.)



CERTIFICATE OF SURVEYOR

I, David A. Fehring of Lander, Wyoming hereby certify that this well location certificate was prepared from notes taken during an actual survey on AUGUST 10, 2015; and that it correctly shows the drilling location of BONANZA CREEK ENERGY, INC., WHITETAIL A-4-9XRLNB as staked during said survey. This map does not represent a boundary survey or an improvement location plat and should not be used for the establishment of boundary lines.

NOTES:

- All bearings are GRID based upon the Colorado State Plane Coordinate System, North Zone, NAD83(2011) derived from post-processed static GPS observations.
- Distances are at GRID
- Vertical Datum is NAVD88 based upon GPS observations
- PDOP value equals 1.2.
- GPS operator: Mike Johnson.
- Undisturbed ground elevation at wellhead = 4862.8'
- (M) Measured distance;
- Nearest Cultural Distances
 - Buildings: 2133' +/-
 - Building Unit: 2133' +/-
 - High Occupancy Building Unit: 5280' +/-
 - Designated Outside Activity Area: 5280' +/-
 - Public Road: 267' +/-
 - Above Ground Utility: 252' +/-
 - Railroad: 5280' +/-
 - Property Line: 283' +/-

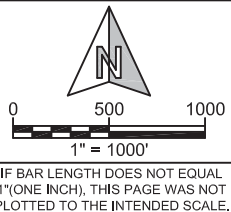
WELL COORDINATES

A-4-9XRLNB	NAD 83		COLORADO NORTH NAD83	
	LATITUDE	LONGITUDE	NORTHING	EASTING
SURFACE	40.5224736	-104.3298031	1435327.18	3325320.37
TARGET 1	40.5218767	-104.3369903	1435083.47	3323325.31
MID LATERAL	40.5086885	-104.3369494	1430279.45	3323399.68
BOTTOM HOLE	40.4955020	-104.3369384	1425476.00	3323465.74

SHEET NO:
2 of 2



Drawn By: MAM
Checked By: DAF
Date: 01/08/18
Revision:
Date:
Explanation:



WELL LOCATION CERTIFICATE

WHITETAIL A-4-9XRLNB
BOTTOM HOLE
SW¼ SW¼, SECTION 9,
T.6N., R.62W., 6th PM
WELD COUNTY, COLORADO

BONANZA CREEK
410 17th Street
Denver, CO 80202
(720) 440-6100