

| | | | |
|-----------|-----------------|-----------|--|
| Location: | COLORADO | Slot: | SLOT#01 NORTH PLATTE K21-Q24-28HNB (271'FNL & 428'FEL, SEC.28) |
| Field: | WELD COUNTY | Well: | NORTH PLATTE K21-Q24-28HNB |
| Facility: | SEC.28-T5N-R63W | Wellbore: | NORTH PLATTE K21-Q24-28HNB PWB |

| | | | |
|-----------|-----------------|-----------|--|
| Location: | COLORADO | Slot: | SLOT#01 NORTH PLATTE K21-024-28HNB (271'FNL & 428'FEL, SEC.28) |
| Field: | WELD COUNTY | Well: | NORTH PLATTE K21-024-28HNB |
| Facility: | SEC.28-T5N-R63W | Wellbore: | NORTH PLATTE K21-024-28HNB PWB |

Plot reference wellpath is NORTH PLATTE K21-O24-28HNB PWP (REV-B.0)

| | |
|--|---|
| True vertical depths are referenced to RIG (17KB) (RKB) | * = Welpath was transformed from a different geodetic datum |
| Measured depths are referenced to RIG (17KB) (RKB) | North Reference: True north |
| RIG (17KB) (RKB) to Mean Sea Level: 4565 feet | Scale: True distance |
| Mean Sea Level to Mud line (At Slot: SLOTR01 NORTH PLATTE K21-C24-28H-B) (271FPA, & 428FEL SEC 28): 0 feet | Depths are in feet |
| Coordinates are in feet referenced to Slot | Created by: ingramm on 2017-12-21 |
| | Database: Denver |

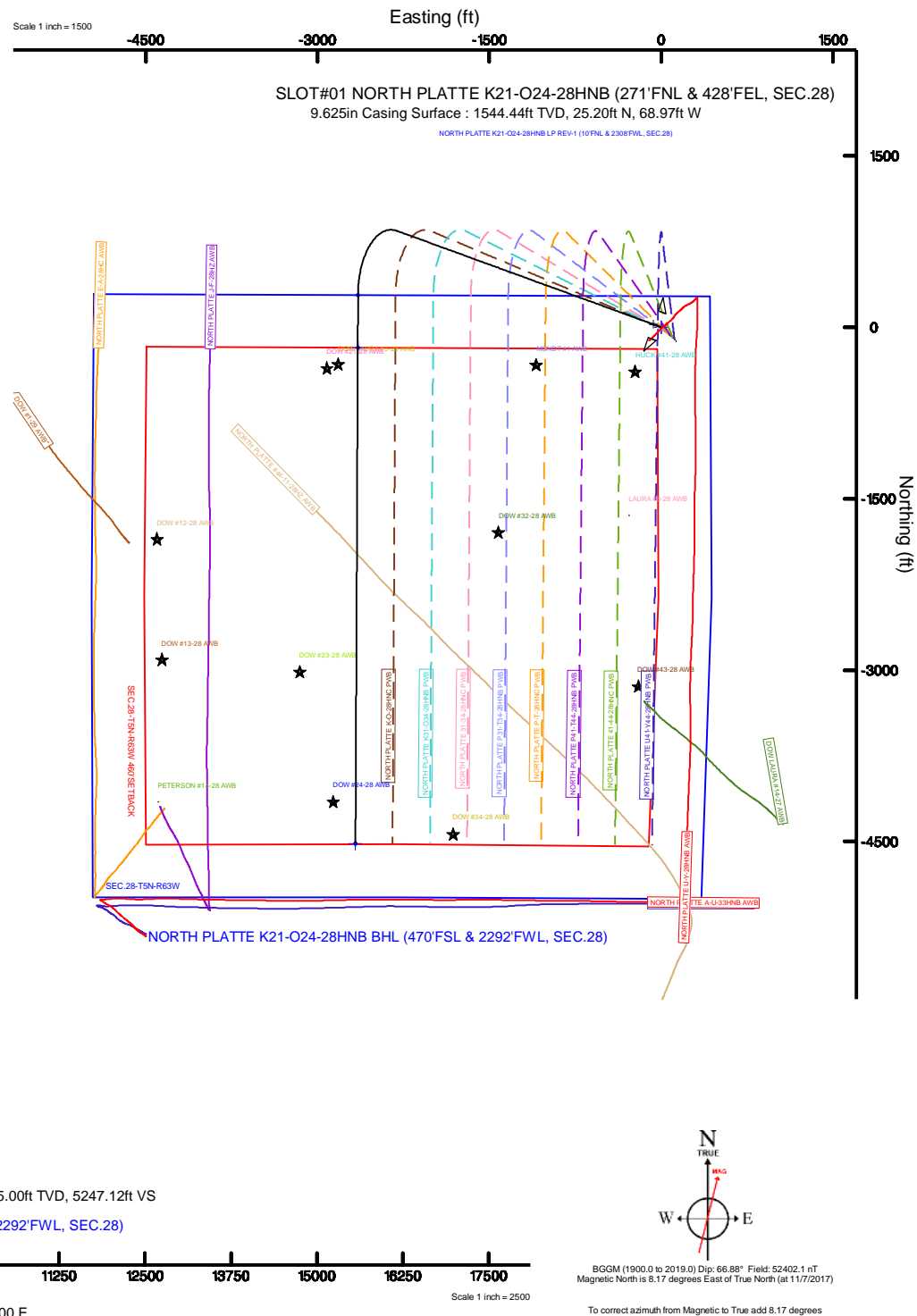
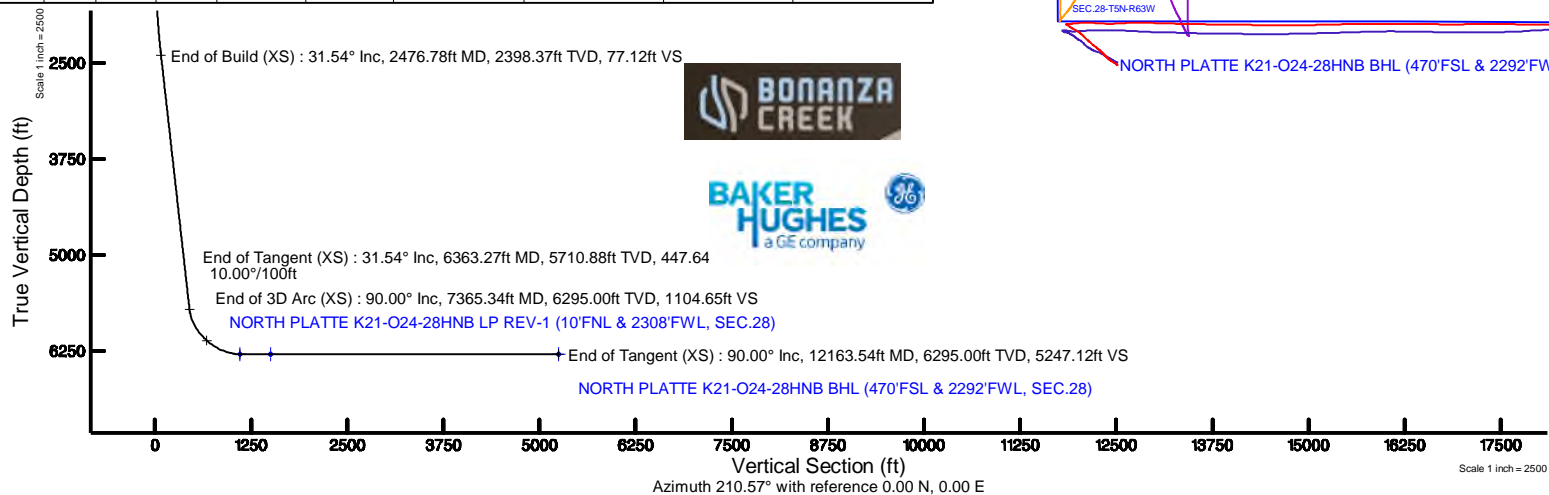
| Facility Name | | | | Grid East (US ft) | Grid North (US ft) | Latitude | Longitude |
|---|--------------|--------------|-------------------|--------------------|--------------------|-----------------|-----------------|
| SEC 28-TSN-R63W | | | | 3294914.220 | 1380434.000 | 40°22'22.300"N | 104°2'E29.400"W |
| Slot | Local N (ft) | Local E (ft) | Grid East (US ft) | Grid North (US ft) | Latitude | Longitude | |
| SLOT#01 NORTH PLATTE K21-Q24-28HNB (271YNL & 428FEL, SEC.28) | 1492.69 | 2462.67 | 3297358.789 | 1381955.911 | 40°22'37.049"N | 104°25'57.580"W | |
| RIG (17KB) (R0K) to Mud line (A Slot: SLOT#01 NORTH PLATTE K21-Q24-28HNB (271YNL & 428FEL, SEC.28)) | | | | | | 4565ft | |
| Mean Sea Level to Mud line (A Slot: SLOT#01 NORTH PLATTE K21-Q24-28HNB (271YNL & 428FEL, SEC.28)) | | | | | | 0ft | |
| RIG (17KB) (R0K) to Mean Sea Level | | | | | | 4565ft | |

| Design Comment | MD (ft) | Inc (°) | Az (°) | TVD (ft) | Local N (ft) | Local E (ft) | DLS (°/100ft) | VS (ft) |
|---------------------|----------|---------|---------|----------|--------------|--------------|---------------|---------|
| Tie On | 17.00 | 0.000 | 290.069 | 17.00 | 0.00 | 0.00 | 0.00 | 0.00 |
| End of Tangent | 900.00 | 0.000 | 290.069 | 900.00 | 0.00 | 0.00 | 0.00 | 0.00 |
| End of Build (XS) | 2476.78 | 31.536 | 290.069 | 2398.37 | 145.18 | -397.40 | 2.00 | 77.12 |
| End of Tangent (XS) | 6363.27 | 31.536 | 290.069 | 5710.88 | 842.73 | -2306.72 | 0.00 | 447.64 |
| End of 3D Arc (XS) | 7365.34 | 90.000 | 180.265 | 6295.00 | 280.40 | -2646.57 | 10.00 | 1104.65 |
| End of Tangent (XS) | 12163.54 | 90.000 | 180.265 | 6295.00 | -4517.75 | -2668.75 | 0.00 | 5247.12 |

| Name | Start MD (ft) | End MD (ft) | Interval (ft) | Start TVD (ft) | End TVD (ft) | Start Local N (ft) | Start Local E (ft) | End Local N (ft) | End Local E (ft) | Wellbore |
|------------------------|---------------|-------------|---------------|----------------|--------------|--------------------|--------------------|------------------|------------------|-------------------------------|
| 9.625in Casing Surface | 17.00 | 1550.00 | 1533.00 | 17.00 | 1544.44 | 0.00 | 0.00 | 25.20 | -68.97 | NORTH PLATTE K21-Q24-28IN PWB |

| Start MD (ft) | End MD (ft) | Tool | Model | Log Name/Comment | Wellbore |
|---------------|-------------|--------------------|---|------------------|--------------------------------|
| 17.00 | 1550.00 | BHI NavTrak | Custom BHI NavTrak (Standard Rotating+Aval Cor) (Rockies 0.03Gt model) | | NORTH PLATTE K21-K24-28HNB PWB |
| 1550.00 | 12163.54 | BHI AutoTrak Curve | Custom BHI AutoTrak Curve (Aval Corr, Short spacing) (Rockies 0.03Gt model) | | NORTH PLATTE K21-K24-28HNB PWB |

| MD (ft) | Inc (°) | Az (°) | TVD (ft) | Local N (ft) | Local E (ft) | Grid East (US ft) | Grid North (US ft) | Latitude | Longitude |
|----------|---------|---------|----------|--------------|--------------|-------------------|--------------------|----------------|-----------------|
| 12163.54 | 90.000 | 180.265 | 6295.00 | -4517.75 | -2668.75 | 3294744.72 | 1377406.56 | 40°21'52.405"N | 104°26'32.057"W |





Planned Wellpath Report

NORTH PLATTE K21-O24-28HNB PWP (REV-B.0)

Page 1 of 8



| REFERENCE WELLPATH IDENTIFICATION | | | |
|-----------------------------------|---------------------------|----------|--|
| Operator | BONANZA CREEK OIL COMPANY | Slot | SLOT#01 NORTH PLATTE K21-O24-28HNB (271'FNL & 428'FEL, SEC.28) |
| Area | COLORADO | Well | NORTH PLATTE K21-O24-28HNB |
| Field | WELD COUNTY | Wellbore | NORTH PLATTE K21-O24-28HNB PWB |
| Facility | SEC.28-T5N-R63W | | |

| REPORT SETUP INFORMATION | | | |
|--------------------------|---|----------------------|---|
| Projection System | NAD83 / Lambert Colorado SP, Northern Zone (501), US feet | Software System | WellArchitect® 5.0 |
| North Reference | True | User | Ingmjmr |
| Scale | 0.999959 | Report Generated | 12/21/2017 at 2:14:01 PM |
| Convergence at slot | 0.69° East | Database/Source file | Denver/NORTH_PLATTE_K21-O24-28HNB_PWP__REV-B.0_.xml |

| WELLPATH LOCATION | | | | | | |
|-----------------------|-------------------|----------|------------------|-----------------|------------------------|-----------------|
| | Local coordinates | | Grid coordinates | | Geographic coordinates | |
| | North[ft] | East[ft] | Easting[US ft] | Northing[US ft] | Latitude | Longitude |
| Slot Location | 1492.69 | 2462.67 | 3297358.79 | 1381955.91 | 40°22'37.049"N | 104°25'57.580"W |
| Facility Reference Pt | | | 3294914.22 | 1380434.00 | 40°22'22.300"N | 104°26'29.400"W |
| Field Reference Pt | | | 3224525.77 | 1254425.87 | 40°01'44.400"N | 104°41'53.556"W |

| WELLPATH DATUM | | | |
|--------------------------|-------------------|--|-------------------|
| Calculation method | Minimum curvature | RIG (17'KB) (RKB) to Installation Vertical Datum | 4565.00ft |
| Horizontal Reference Pt | Slot | RIG (17'KB) (RKB) to Mean Sea Level | 4565.00ft |
| Vertical Reference Pt | RIG (17'KB) (RKB) | RIG (17'KB) (RKB) to Mud Line at Slot (SLOT#01 NORTH PLATTE K21-O24-28HNB (271'FNL & 428'FEL, SEC.28)) | 4565.00ft |
| MD Reference Pt | RIG (17'KB) (RKB) | Section Origin | N 0.00, E 0.00 ft |
| Field Vertical Reference | Mean Sea Level | Section Azimuth | 210.57° |



Planned Wellpath Report

NORTH PLATTE K21-O24-28HNB PWP (REV-B.0)

Page 2 of 8



| REFERENCE WELLPATH IDENTIFICATION | | | |
|-----------------------------------|---------------------------|----------|--|
| Operator | BONANZA CREEK OIL COMPANY | Slot | SLOT#01 NORTH PLATTE K21-O24-28HNB (271'FNL & 428'FEL, SEC.28) |
| Area | COLORADO | Well | NORTH PLATTE K21-O24-28HNB |
| Field | WELD COUNTY | Wellbore | NORTH PLATTE K21-O24-28HNB PWB |
| Facility | SEC.28-T5N-R63W | | |

| WELLPATH DATA (128 stations) † = interpolated/extrapolated station | | | | | | | | | | |
|--|--------------------|----------------|-------------|-------------------|---------------|--------------|----------------|-----------------|------------------|-------------------|
| MD [ft] | Inclination [°] | Azimuth [°] | TVD [ft] | Vert Sect [ft] | North [ft] | East [ft] | Latitude | Longitude | DLS [°/100ft] | Comments |
| 0.00† | 0.000 | 290.069 | 0.00 | 0.00 | 0.00 | 0.00 | 40°22'37.049"N | 104°25'57.580"W | 0.00 | |
| 17.00 | 0.000 | 290.069 | 17.00 | 0.00 | 0.00 | 0.00 | 40°22'37.049"N | 104°25'57.580"W | 0.00 | Tie On |
| 117.00† | 0.000 | 290.069 | 117.00 | 0.00 | 0.00 | 0.00 | 40°22'37.049"N | 104°25'57.580"W | 0.00 | |
| 217.00† | 0.000 | 290.069 | 217.00 | 0.00 | 0.00 | 0.00 | 40°22'37.049"N | 104°25'57.580"W | 0.00 | |
| 317.00† | 0.000 | 290.069 | 317.00 | 0.00 | 0.00 | 0.00 | 40°22'37.049"N | 104°25'57.580"W | 0.00 | |
| 417.00† | 0.000 | 290.069 | 417.00 | 0.00 | 0.00 | 0.00 | 40°22'37.049"N | 104°25'57.580"W | 0.00 | |
| 517.00† | 0.000 | 290.069 | 517.00 | 0.00 | 0.00 | 0.00 | 40°22'37.049"N | 104°25'57.580"W | 0.00 | |
| 617.00† | 0.000 | 290.069 | 617.00 | 0.00 | 0.00 | 0.00 | 40°22'37.049"N | 104°25'57.580"W | 0.00 | |
| 717.00† | 0.000 | 290.069 | 717.00 | 0.00 | 0.00 | 0.00 | 40°22'37.049"N | 104°25'57.580"W | 0.00 | |
| 817.00† | 0.000 | 290.069 | 817.00 | 0.00 | 0.00 | 0.00 | 40°22'37.049"N | 104°25'57.580"W | 0.00 | |
| 900.00 | 0.000 | 290.069 | 900.00 | 0.00 | 0.00 | 0.00 | 40°22'37.049"N | 104°25'57.580"W | 0.00 | End of Tangent |
| 917.00† | 0.340 | 290.069 | 917.00 | 0.01 | 0.02 | -0.05 | 40°22'37.049"N | 104°25'57.581"W | 2.00 | |
| 1017.00† | 2.340 | 290.069 | 1016.97 | 0.44 | 0.82 | -2.24 | 40°22'37.057"N | 104°25'57.609"W | 2.00 | |
| 1117.00† | 4.340 | 290.069 | 1116.79 | 1.50 | 2.82 | -7.72 | 40°22'37.077"N | 104°25'57.680"W | 2.00 | |
| 1217.00† | 6.340 | 290.069 | 1216.35 | 3.19 | 6.01 | -16.46 | 40°22'37.108"N | 104°25'57.793"W | 2.00 | |
| 1317.00† | 8.340 | 290.069 | 1315.53 | 5.52 | 10.40 | -28.46 | 40°22'37.152"N | 104°25'57.948"W | 2.00 | |
| 1417.00† | 10.340 | 290.069 | 1414.20 | 8.48 | 15.96 | -43.70 | 40°22'37.207"N | 104°25'58.145"W | 2.00 | |
| 1517.00† | 12.340 | 290.069 | 1512.24 | 12.06 | 22.71 | -62.17 | 40°22'37.273"N | 104°25'58.383"W | 2.00 | |
| 1617.00† | 14.340 | 290.069 | 1609.54 | 16.27 | 30.63 | -83.84 | 40°22'37.352"N | 104°25'58.663"W | 2.00 | |
| 1717.00† | 16.340 | 290.069 | 1705.97 | 21.09 | 39.71 | -108.69 | 40°22'37.441"N | 104°25'58.984"W | 2.00 | |
| 1817.00† | 18.340 | 290.069 | 1801.42 | 26.52 | 49.93 | -136.68 | 40°22'37.542"N | 104°25'59.346"W | 2.00 | |
| 1917.00† | 20.340 | 290.069 | 1895.77 | 32.56 | 61.30 | -167.78 | 40°22'37.655"N | 104°25'59.748"W | 2.00 | |
| 2017.00† | 22.340 | 290.069 | 1988.91 | 39.19 | 73.78 | -201.96 | 40°22'37.778"N | 104°26'00.190"W | 2.00 | |
| 2117.00† | 24.340 | 290.069 | 2080.72 | 46.41 | 87.38 | -239.17 | 40°22'37.912"N | 104°26'00.670"W | 2.00 | |
| 2217.00† | 26.340 | 290.069 | 2171.10 | 54.21 | 102.06 | -279.37 | 40°22'38.058"N | 104°26'01.190"W | 2.00 | |
| 2317.00† | 28.340 | 290.069 | 2259.92 | 62.59 | 117.82 | -322.51 | 40°22'38.213"N | 104°26'01.747"W | 2.00 | |
| 2417.00† | 30.340 | 290.069 | 2347.09 | 71.52 | 134.64 | -368.53 | 40°22'38.379"N | 104°26'02.342"W | 2.00 | |
| 2476.78 | 31.536 | 290.069 | 2398.37 | 77.12 | 145.18 | -397.40 | 40°22'38.484"N | 104°26'02.715"W | 2.00 | End of Build (XS) |
| 2517.00† | 31.536 | 290.069 | 2432.65 | 80.95 | 152.40 | -417.15 | 40°22'38.555"N | 104°26'02.970"W | 0.00 | |
| 2617.00† | 31.536 | 290.069 | 2517.88 | 90.49 | 170.35 | -466.28 | 40°22'38.732"N | 104°26'03.605"W | 0.00 | |



Planned Wellpath Report

NORTH PLATTE K21-O24-28HNB PWP (REV-B.0)

Page 3 of 8



| REFERENCE WELLPATH IDENTIFICATION | | | |
|-----------------------------------|---------------------------|----------|--|
| Operator | BONANZA CREEK OIL COMPANY | Slot | SLOT#01 NORTH PLATTE K21-O24-28HNB (271'FNL & 428'FEL, SEC.28) |
| Area | COLORADO | Well | NORTH PLATTE K21-O24-28HNB |
| Field | WELD COUNTY | Wellbore | NORTH PLATTE K21-O24-28HNB PWB |
| Facility | SEC.28-T5N-R63W | | |

| WELLPATH DATA (128 stations) † = interpolated/extrapolated station | | | | | | | | | | |
|--|--------------------|----------------|-------------|-------------------|---------------|--------------|----------------|-----------------|------------------|----------|
| MD [ft] | Inclination [°] | Azimuth [°] | TVD [ft] | Vert Sect [ft] | North [ft] | East [ft] | Latitude | Longitude | DLS [°/100ft] | Comments |
| 2717.00† | 31.536 | 290.069 | 2603.11 | 100.02 | 188.30 | -515.41 | 40°22'38.910"N | 104°26'04.240"W | 0.00 | |
| 2817.00† | 31.536 | 290.069 | 2688.34 | 109.55 | 206.24 | -564.54 | 40°22'39.087"N | 104°26'04.874"W | 0.00 | |
| 2917.00† | 31.536 | 290.069 | 2773.57 | 119.09 | 224.19 | -613.66 | 40°22'39.264"N | 104°26'05.509"W | 0.00 | |
| 3017.00† | 31.536 | 290.069 | 2858.80 | 128.62 | 242.14 | -662.79 | 40°22'39.442"N | 104°26'06.144"W | 0.00 | |
| 3117.00† | 31.536 | 290.069 | 2944.03 | 138.15 | 260.09 | -711.92 | 40°22'39.619"N | 104°26'06.779"W | 0.00 | |
| 3217.00† | 31.536 | 290.069 | 3029.27 | 147.69 | 278.04 | -761.04 | 40°22'39.796"N | 104°26'07.414"W | 0.00 | |
| 3317.00† | 31.536 | 290.069 | 3114.50 | 157.22 | 295.98 | -810.17 | 40°22'39.974"N | 104°26'08.048"W | 0.00 | |
| 3417.00† | 31.536 | 290.069 | 3199.73 | 166.76 | 313.93 | -859.30 | 40°22'40.151"N | 104°26'08.683"W | 0.00 | |
| 3517.00† | 31.536 | 290.069 | 3284.96 | 176.29 | 331.88 | -908.43 | 40°22'40.328"N | 104°26'09.318"W | 0.00 | |
| 3617.00† | 31.536 | 290.069 | 3370.19 | 185.82 | 349.83 | -957.55 | 40°22'40.506"N | 104°26'09.953"W | 0.00 | |
| 3717.00† | 31.536 | 290.069 | 3455.42 | 195.36 | 367.78 | -1006.68 | 40°22'40.683"N | 104°26'10.587"W | 0.00 | |
| 3817.00† | 31.536 | 290.069 | 3540.65 | 204.89 | 385.72 | -1055.81 | 40°22'40.860"N | 104°26'11.222"W | 0.00 | |
| 3917.00† | 31.536 | 290.069 | 3625.89 | 214.42 | 403.67 | -1104.93 | 40°22'41.038"N | 104°26'11.857"W | 0.00 | |
| 4017.00† | 31.536 | 290.069 | 3711.12 | 223.96 | 421.62 | -1154.06 | 40°22'41.215"N | 104°26'12.492"W | 0.00 | |
| 4117.00† | 31.536 | 290.069 | 3796.35 | 233.49 | 439.57 | -1203.19 | 40°22'41.392"N | 104°26'13.127"W | 0.00 | |
| 4217.00† | 31.536 | 290.069 | 3881.58 | 243.02 | 457.52 | -1252.32 | 40°22'41.570"N | 104°26'13.761"W | 0.00 | |
| 4317.00† | 31.536 | 290.069 | 3966.81 | 252.56 | 475.46 | -1301.44 | 40°22'41.747"N | 104°26'14.396"W | 0.00 | |
| 4417.00† | 31.536 | 290.069 | 4052.04 | 262.09 | 493.41 | -1350.57 | 40°22'41.924"N | 104°26'15.031"W | 0.00 | |
| 4517.00† | 31.536 | 290.069 | 4137.27 | 271.63 | 511.36 | -1399.70 | 40°22'42.102"N | 104°26'15.666"W | 0.00 | |
| 4617.00† | 31.536 | 290.069 | 4222.51 | 281.16 | 529.31 | -1448.82 | 40°22'42.279"N | 104°26'16.301"W | 0.00 | |
| 4717.00† | 31.536 | 290.069 | 4307.74 | 290.69 | 547.25 | -1497.95 | 40°22'42.456"N | 104°26'16.935"W | 0.00 | |
| 4817.00† | 31.536 | 290.069 | 4392.97 | 300.23 | 565.20 | -1547.08 | 40°22'42.634"N | 104°26'17.570"W | 0.00 | |
| 4917.00† | 31.536 | 290.069 | 4478.20 | 309.76 | 583.15 | -1596.21 | 40°22'42.811"N | 104°26'18.205"W | 0.00 | |
| 5017.00† | 31.536 | 290.069 | 4563.43 | 319.29 | 601.10 | -1645.33 | 40°22'42.988"N | 104°26'18.840"W | 0.00 | |
| 5117.00† | 31.536 | 290.069 | 4648.66 | 328.83 | 619.05 | -1694.46 | 40°22'43.166"N | 104°26'19.475"W | 0.00 | |
| 5217.00† | 31.536 | 290.069 | 4733.89 | 338.36 | 636.99 | -1743.59 | 40°22'43.343"N | 104°26'20.109"W | 0.00 | |
| 5317.00† | 31.536 | 290.069 | 4819.13 | 347.89 | 654.94 | -1792.71 | 40°22'43.520"N | 104°26'20.744"W | 0.00 | |
| 5417.00† | 31.536 | 290.069 | 4904.36 | 357.43 | 672.89 | -1841.84 | 40°22'43.698"N | 104°26'21.379"W | 0.00 | |
| 5517.00† | 31.536 | 290.069 | 4989.59 | 366.96 | 690.84 | -1890.97 | 40°22'43.875"N | 104°26'22.014"W | 0.00 | |
| 5617.00† | 31.536 | 290.069 | 5074.82 | 376.49 | 708.79 | -1940.09 | 40°22'44.052"N | 104°26'22.649"W | 0.00 | |



Planned Wellpath Report

NORTH PLATTE K21-O24-28HNB PWP (REV-B.0)

Page 4 of 8



| REFERENCE WELLPATH IDENTIFICATION | | | |
|-----------------------------------|---------------------------|----------|--|
| Operator | BONANZA CREEK OIL COMPANY | Slot | SLOT#01 NORTH PLATTE K21-O24-28HNB (271'FNL & 428'FEL, SEC.28) |
| Area | COLORADO | Well | NORTH PLATTE K21-O24-28HNB |
| Field | WELD COUNTY | Wellbore | NORTH PLATTE K21-O24-28HNB PWB |
| Facility | SEC.28-T5N-R63W | | |

| WELLPATH DATA (128 stations) † = interpolated/extrapolated station | | | | | | | | | | |
|--|--------------------|----------------|-------------|-------------------|---------------|--------------|----------------|-----------------|------------------|---------------------|
| MD [ft] | Inclination [°] | Azimuth [°] | TVD [ft] | Vert Sect [ft] | North [ft] | East [ft] | Latitude | Longitude | DLS [°/100ft] | Comments |
| 5717.00† | 31.536 | 290.069 | 5160.05 | 386.03 | 726.73 | -1989.22 | 40°22'44.230"N | 104°26'23.283"W | 0.00 | |
| 5817.00† | 31.536 | 290.069 | 5245.28 | 395.56 | 744.68 | -2038.35 | 40°22'44.407"N | 104°26'23.918"W | 0.00 | |
| 5917.00† | 31.536 | 290.069 | 5330.52 | 405.10 | 762.63 | -2087.48 | 40°22'44.584"N | 104°26'24.553"W | 0.00 | |
| 6017.00† | 31.536 | 290.069 | 5415.75 | 414.63 | 780.58 | -2136.60 | 40°22'44.761"N | 104°26'25.188"W | 0.00 | |
| 6117.00† | 31.536 | 290.069 | 5500.98 | 424.16 | 798.52 | -2185.73 | 40°22'44.939"N | 104°26'25.823"W | 0.00 | |
| 6217.00† | 31.536 | 290.069 | 5586.21 | 433.70 | 816.47 | -2234.86 | 40°22'45.116"N | 104°26'26.457"W | 0.00 | |
| 6317.00† | 31.536 | 290.069 | 5671.44 | 443.23 | 834.42 | -2283.98 | 40°22'45.293"N | 104°26'27.092"W | 0.00 | |
| 6363.27 | 31.536 | 290.069 | 5710.88 | 447.64 | 842.73 | -2306.72 | 40°22'45.375"N | 104°26'27.386"W | 0.00 | End of Tangent (XS) |
| 6417.00† | 30.352 | 279.865 | 5756.99 | 455.01 | 849.88 | -2333.31 | 40°22'45.446"N | 104°26'27.730"W | 10.00 | |
| 6517.00† | 30.401 | 260.016 | 5843.48 | 480.46 | 849.82 | -2383.25 | 40°22'45.446"N | 104°26'28.375"W | 10.00 | |
| 6617.00† | 33.295 | 241.803 | 5928.62 | 520.48 | 832.42 | -2432.48 | 40°22'45.274"N | 104°26'29.011"W | 10.00 | |
| 6717.00† | 38.388 | 227.047 | 6009.81 | 573.86 | 798.21 | -2479.51 | 40°22'44.935"N | 104°26'29.619"W | 10.00 | |
| 6817.00† | 44.931 | 215.628 | 6084.59 | 638.97 | 748.22 | -2522.92 | 40°22'44.441"N | 104°26'30.180"W | 10.00 | |
| 6917.00† | 52.368 | 206.698 | 6150.68 | 713.85 | 683.98 | -2561.38 | 40°22'43.807"N | 104°26'30.676"W | 10.00 | |
| 7017.00† | 60.352 | 199.451 | 6206.09 | 796.20 | 607.43 | -2593.72 | 40°22'43.050"N | 104°26'31.094"W | 10.00 | |
| 7117.00† | 68.671 | 193.294 | 6249.12 | 883.53 | 520.91 | -2618.97 | 40°22'42.195"N | 104°26'31.420"W | 10.00 | |
| 7217.00† | 77.190 | 187.808 | 6278.46 | 973.19 | 427.04 | -2636.34 | 40°22'41.268"N | 104°26'31.645"W | 10.00 | |
| 7317.00† | 85.815 | 182.686 | 6293.23 | 1062.45 | 328.68 | -2645.33 | 40°22'40.296"N | 104°26'31.761"W | 10.00 | |
| 7365.34 | 90.000 | 180.265 | 6295.00† | 1104.65 | 280.40 | -2646.57 | 40°22'39.818"N | 104°26'31.777"W | 10.00 | End of 3D Arc (XS) |
| 7417.00† | 90.000 | 180.265 | 6295.00 | 1149.25 | 228.74 | -2646.81 | 40°22'39.308"N | 104°26'31.780"W | 0.00 | |
| 7517.00† | 90.000 | 180.265 | 6295.00 | 1235.59 | 128.74 | -2647.27 | 40°22'38.320"N | 104°26'31.785"W | 0.00 | |
| 7617.00† | 90.000 | 180.265 | 6295.00 | 1321.92 | 28.74 | -2647.73 | 40°22'37.332"N | 104°26'31.791"W | 0.00 | |
| 7717.00† | 90.000 | 180.265 | 6295.00 | 1408.25 | -71.25 | -2648.20 | 40°22'36.343"N | 104°26'31.797"W | 0.00 | |
| 7817.00† | 90.000 | 180.265 | 6295.00 | 1494.59 | -171.25 | -2648.66 | 40°22'35.355"N | 104°26'31.803"W | 0.00 | |
| 7917.00† | 90.000 | 180.265 | 6295.00 | 1580.92 | -271.25 | -2649.12 | 40°22'34.367"N | 104°26'31.809"W | 0.00 | |
| 8017.00† | 90.000 | 180.265 | 6295.00 | 1667.26 | -371.25 | -2649.58 | 40°22'33.379"N | 104°26'31.815"W | 0.00 | |
| 8117.00† | 90.000 | 180.265 | 6295.00 | 1753.59 | -471.25 | -2650.04 | 40°22'32.391"N | 104°26'31.820"W | 0.00 | |
| 8217.00† | 90.000 | 180.265 | 6295.00 | 1839.92 | -571.25 | -2650.51 | 40°22'31.403"N | 104°26'31.826"W | 0.00 | |
| 8317.00† | 90.000 | 180.265 | 6295.00 | 1926.26 | -671.25 | -2650.97 | 40°22'30.415"N | 104°26'31.832"W | 0.00 | |
| 8417.00† | 90.000 | 180.265 | 6295.00 | 2012.59 | -771.25 | -2651.43 | 40°22'29.426"N | 104°26'31.838"W | 0.00 | |



Planned Wellpath Report

NORTH PLATTE K21-O24-28HNB PWP (REV-B.0)

Page 5 of 8



| REFERENCE WELLPATH IDENTIFICATION | | | |
|-----------------------------------|---------------------------|----------|--|
| Operator | BONANZA CREEK OIL COMPANY | Slot | SLOT#01 NORTH PLATTE K21-O24-28HNB (271'FNL & 428'FEL, SEC.28) |
| Area | COLORADO | Well | NORTH PLATTE K21-O24-28HNB |
| Field | WELD COUNTY | Wellbore | NORTH PLATTE K21-O24-28HNB PWB |
| Facility | SEC.28-T5N-R63W | | |

| WELLPATH DATA (128 stations) † = interpolated/extrapolated station | | | | | | | | | | |
|--|--------------------|----------------|-------------|-------------------|---------------|--------------|----------------|-----------------|------------------|----------|
| MD [ft] | Inclination [°] | Azimuth [°] | TVD [ft] | Vert Sect [ft] | North [ft] | East [ft] | Latitude | Longitude | DLS [°/100ft] | Comments |
| 8517.00† | 90.000 | 180.265 | 6295.00 | 2098.92 | -871.25 | -2651.89 | 40°22'28.438"N | 104°26'31.844"W | 0.00 | |
| 8617.00† | 90.000 | 180.265 | 6295.00 | 2185.26 | -971.24 | -2652.36 | 40°22'27.450"N | 104°26'31.850"W | 0.00 | |
| 8717.00† | 90.000 | 180.265 | 6295.00 | 2271.59 | -1071.24 | -2652.82 | 40°22'26.462"N | 104°26'31.855"W | 0.00 | |
| 8817.00† | 90.000 | 180.265 | 6295.00 | 2357.93 | -1171.24 | -2653.28 | 40°22'25.474"N | 104°26'31.861"W | 0.00 | |
| 8917.00† | 90.000 | 180.265 | 6295.00 | 2444.26 | -1271.24 | -2653.74 | 40°22'24.486"N | 104°26'31.867"W | 0.00 | |
| 9017.00† | 90.000 | 180.265 | 6295.00 | 2530.59 | -1371.24 | -2654.20 | 40°22'23.497"N | 104°26'31.873"W | 0.00 | |
| 9117.00† | 90.000 | 180.265 | 6295.00 | 2616.93 | -1471.24 | -2654.67 | 40°22'22.509"N | 104°26'31.879"W | 0.00 | |
| 9217.00† | 90.000 | 180.265 | 6295.00 | 2703.26 | -1571.24 | -2655.13 | 40°22'21.521"N | 104°26'31.885"W | 0.00 | |
| 9317.00† | 90.000 | 180.265 | 6295.00 | 2789.59 | -1671.24 | -2655.59 | 40°22'20.533"N | 104°26'31.890"W | 0.00 | |
| 9417.00† | 90.000 | 180.265 | 6295.00 | 2875.93 | -1771.24 | -2656.05 | 40°22'19.545"N | 104°26'31.896"W | 0.00 | |
| 9517.00† | 90.000 | 180.265 | 6295.00 | 2962.26 | -1871.24 | -2656.52 | 40°22'18.557"N | 104°26'31.902"W | 0.00 | |
| 9617.00† | 90.000 | 180.265 | 6295.00 | 3048.60 | -1971.23 | -2656.98 | 40°22'17.568"N | 104°26'31.908"W | 0.00 | |
| 9717.00† | 90.000 | 180.265 | 6295.00 | 3134.93 | -2071.23 | -2657.44 | 40°22'16.580"N | 104°26'31.914"W | 0.00 | |
| 9817.00† | 90.000 | 180.265 | 6295.00 | 3221.26 | -2171.23 | -2657.90 | 40°22'15.592"N | 104°26'31.920"W | 0.00 | |
| 9917.00† | 90.000 | 180.265 | 6295.00 | 3307.60 | -2271.23 | -2658.37 | 40°22'14.604"N | 104°26'31.925"W | 0.00 | |
| 10017.00† | 90.000 | 180.265 | 6295.00 | 3393.93 | -2371.23 | -2658.83 | 40°22'13.616"N | 104°26'31.931"W | 0.00 | |
| 10117.00† | 90.000 | 180.265 | 6295.00 | 3480.26 | -2471.23 | -2659.29 | 40°22'12.628"N | 104°26'31.937"W | 0.00 | |
| 10217.00† | 90.000 | 180.265 | 6295.00 | 3566.60 | -2571.23 | -2659.75 | 40°22'11.640"N | 104°26'31.943"W | 0.00 | |
| 10317.00† | 90.000 | 180.265 | 6295.00 | 3652.93 | -2671.23 | -2660.21 | 40°22'10.651"N | 104°26'31.949"W | 0.00 | |
| 10417.00† | 90.000 | 180.265 | 6295.00 | 3739.27 | -2771.23 | -2660.68 | 40°22'09.663"N | 104°26'31.955"W | 0.00 | |
| 10517.00† | 90.000 | 180.265 | 6295.00 | 3825.60 | -2871.22 | -2661.14 | 40°22'08.675"N | 104°26'31.960"W | 0.00 | |
| 10617.00† | 90.000 | 180.265 | 6295.00 | 3911.93 | -2971.22 | -2661.60 | 40°22'07.687"N | 104°26'31.966"W | 0.00 | |
| 10717.00† | 90.000 | 180.265 | 6295.00 | 3998.27 | -3071.22 | -2662.06 | 40°22'06.699"N | 104°26'31.972"W | 0.00 | |
| 10817.00† | 90.000 | 180.265 | 6295.00 | 4084.60 | -3171.22 | -2662.53 | 40°22'05.711"N | 104°26'31.978"W | 0.00 | |
| 10917.00† | 90.000 | 180.265 | 6295.00 | 4170.93 | -3271.22 | -2662.99 | 40°22'04.722"N | 104°26'31.984"W | 0.00 | |
| 11017.00† | 90.000 | 180.265 | 6295.00 | 4257.27 | -3371.22 | -2663.45 | 40°22'03.734"N | 104°26'31.990"W | 0.00 | |
| 11117.00† | 90.000 | 180.265 | 6295.00 | 4343.60 | -3471.22 | -2663.91 | 40°22'02.746"N | 104°26'31.995"W | 0.00 | |
| 11217.00† | 90.000 | 180.265 | 6295.00 | 4429.94 | -3571.22 | -2664.37 | 40°22'01.758"N | 104°26'32.001"W | 0.00 | |
| 11317.00† | 90.000 | 180.265 | 6295.00 | 4516.27 | -3671.22 | -2664.84 | 40°22'00.770"N | 104°26'32.007"W | 0.00 | |
| 11417.00† | 90.000 | 180.265 | 6295.00 | 4602.60 | -3771.21 | -2665.30 | 40°21'59.782"N | 104°26'32.013"W | 0.00 | |



Planned Wellpath Report

NORTH PLATTE K21-O24-28HNB PWP (REV-B.0)

Page 6 of 8



| REFERENCE WELLPATH IDENTIFICATION | | | |
|-----------------------------------|---------------------------|----------|--|
| Operator | BONANZA CREEK OIL COMPANY | Slot | SLOT#01 NORTH PLATTE K21-O24-28HNB (271'FNL & 428'FEL, SEC.28) |
| Area | COLORADO | Well | NORTH PLATTE K21-O24-28HNB |
| Field | WELD COUNTY | Wellbore | NORTH PLATTE K21-O24-28HNB PWB |
| Facility | SEC.28-T5N-R63W | | |

| WELLPATH DATA (128 stations) † = interpolated/extrapolated station | | | | | | | | | | |
|--|--------------------|----------------|----------------------|-------------------|---------------|--------------|----------------|-----------------|------------------|---------------------|
| MD [ft] | Inclination [°] | Azimuth [°] | TVD [ft] | Vert Sect [ft] | North [ft] | East [ft] | Latitude | Longitude | DLS [°/100ft] | Comments |
| 11517.00† | 90.000 | 180.265 | 6295.00 | 4688.94 | -3871.21 | -2665.76 | 40°21'58.793"N | 104°26'32.019"W | 0.00 | |
| 11617.00† | 90.000 | 180.265 | 6295.00 | 4775.27 | -3971.21 | -2666.22 | 40°21'57.805"N | 104°26'32.025"W | 0.00 | |
| 11717.00† | 90.000 | 180.265 | 6295.00 | 4861.60 | -4071.21 | -2666.69 | 40°21'56.817"N | 104°26'32.030"W | 0.00 | |
| 11817.00† | 90.000 | 180.265 | 6295.00 | 4947.94 | -4171.21 | -2667.15 | 40°21'55.829"N | 104°26'32.036"W | 0.00 | |
| 11917.00† | 90.000 | 180.265 | 6295.00 | 5034.27 | -4271.21 | -2667.61 | 40°21'54.841"N | 104°26'32.042"W | 0.00 | |
| 12017.00† | 90.000 | 180.265 | 6295.00 | 5120.61 | -4371.21 | -2668.07 | 40°21'53.853"N | 104°26'32.048"W | 0.00 | |
| 12117.00† | 90.000 | 180.265 | 6295.00 | 5206.94 | -4471.21 | -2668.53 | 40°21'52.864"N | 104°26'32.054"W | 0.00 | |
| 12163.54 | 90.000 | 180.265 | 6295.00 ² | 5247.12 | -4517.75 | -2668.75 | 40°21'52.405"N | 104°26'32.057"W | 0.00 | End of Tangent (XS) |

| HOLE & CASING SECTIONS | | | | | | | | | |
|--|------------------|----------------|------------------|-------------------|-----------------|-------------------|-------------------|-----------------|-----------------|
| - Ref Wellbore: NORTH PLATTE K21-O24-28HNB PWB Ref Wellpath: NORTH PLATTE K21-O24-28HNB PWP (REV-B.0) | | | | | | | | | |
| String/Diameter | Start MD [ft] | End MD [ft] | Interval [ft] | Start TVD [ft] | End TVD [ft] | Start N/S [ft] | Start E/W [ft] | End N/S [ft] | End E/W [ft] |
| 9.625in Casing Surface | 17.00 | 1550.00 | 1533.00 | 17.00 | 1544.44 | 0.00 | 0.00 | 25.20 | -68.97 |



Planned Wellpath Report

NORTH PLATTE K21-O24-28HNB PWP (REV-B.0)

Page 7 of 8



| REFERENCE WELLPATH IDENTIFICATION | | | |
|-----------------------------------|---------------------------|----------|--|
| Operator | BONANZA CREEK OIL COMPANY | Slot | SLOT#01 NORTH PLATTE K21-O24-28HNB (271'FNL & 428'FEL, SEC.28) |
| Area | COLORADO | Well | NORTH PLATTE K21-O24-28HNB |
| Field | WELD COUNTY | Wellbore | NORTH PLATTE K21-O24-28HNB PWB |
| Facility | SEC.28-T5N-R63W | | |

| TARGETS | | | | | | | | | |
|---|------------|-------------|---------------|--------------|----------------------|-----------------------|----------------|-----------------|---------|
| Name | MD [ft] | TVD [ft] | North [ft] | East [ft] | Grid East [US ft] | Grid North [US ft] | Latitude | Longitude | Shape |
| SEC.28-T05N-R63W | | -13.00 | 0.00 | 0.00 | 3297358.79 | 1381955.91 | 40°22'37.049"N | 104°25'57.580"W | polygon |
| 2) NORTH PLATTE K21-O24-28HNB BHL (470'FSL & 2292'FWL, SEC.28) | 12163.54 | 6295.00 | -4517.75 | -2668.75 | 3294744.72 | 1377406.56 | 40°21'52.405"N | 104°26'32.057"W | point |
| NORTH PLATTE K21-O24-28HNB LP (470'FNL & 2308'FWL, SEC.28) | | 6295.00 | -180.40 | -2646.57 | 3294714.70 | 1381743.68 | 40°22'35.265"N | 104°26'31.776"W | point |
| 1) NORTH PLATTE K21-O24-28HNB LP REV-1 (10'FNL & 2308'FWL, SEC.28) | 7365.34 | 6295.00 | 280.40 | -2646.57 | 3294709.15 | 1382204.43 | 40°22'39.818"N | 104°26'31.777"W | point |
| SEC.28-T05N-R63W 460'SETBACKS | | 6420.00 | 0.00 | 0.00 | 3297358.79 | 1381955.91 | 40°22'37.049"N | 104°25'57.580"W | polygon |

| SURVEY PROGRAM - Ref Wellbore: NORTH PLATTE K21-O24-28HNB PWB Ref Wellpath: NORTH PLATTE K21-O24-28HNB PWP (REV-B.0) | | | | |
|---|----------------|--|---------------------|--------------------------------|
| Start MD [ft] | End MD [ft] | Positional Uncertainty Model | Log Name/Comment | Wellbore |
| 17.00 | 1550.00 | Custom BHI NaviTrak (Standard Rotating+Axial Corr) (Rockies 0.03Gt model) | | NORTH PLATTE K21-O24-28HNB PWB |
| 1550.00 | 12163.54 | Custom BHI AutoTrak Curve (Axial Corr, Short spacing) (Rockies 0.03Gt model) | | NORTH PLATTE K21-O24-28HNB PWB |



Planned Wellpath Report

NORTH PLATTE K21-O24-28HNB PWP (REV-B.0)

Page 8 of 8



| REFERENCE WELLPATH IDENTIFICATION | | | |
|-----------------------------------|---------------------------|----------|--|
| Operator | BONANZA CREEK OIL COMPANY | Slot | SLOT#01 NORTH PLATTE K21-O24-28HNB (271'FNL & 428'FEL, SEC.28) |
| Area | COLORADO | Well | NORTH PLATTE K21-O24-28HNB |
| Field | WELD COUNTY | Wellbore | NORTH PLATTE K21-O24-28HNB PWB |
| Facility | SEC.28-T5N-R63W | | |

| DESIGN COMMENTS | | | | |
|-----------------|--------------------|----------------|-------------|---------------------|
| MD [ft] | Inclination [°] | Azimuth [°] | TVD [ft] | Comment |
| 17.00 | 0.000 | 290.069 | 17.00 | Tie On |
| 900.00 | 0.000 | 290.069 | 900.00 | End of Tangent |
| 2476.78 | 31.536 | 290.069 | 2398.37 | End of Build (XS) |
| 6363.27 | 31.536 | 290.069 | 5710.88 | End of Tangent (XS) |
| 7365.34 | 90.000 | 180.265 | 6295.00 | End of 3D Arc (XS) |
| 12163.54 | 90.000 | 180.265 | 6295.00 | End of Tangent (XS) |