

Location:	COLORADO	Slot:	SLOT#07 NORTH PLATTE P41-T44-28HNB (353'FNL. & 341'FEL, SEC.28)
Field:	WELD COUNTY	Well:	NORTH PLATTE P41-T44-28HNB
Facility:	SEC.28-T5N-R63W	Wellbore:	NORTH PLATTE P41-T44-28HNB PWB

Location:	COLORADO	Slot:	SLOT#07 NORTH PLATTE P41-T44-28HNB (353'FNL & 341'FEL, SEC.28)
Field:	WELD COUNTY	Well:	NORTH PLATTE P41-T44-28HNB
Facility:	SEC.28-T5N-R63W	Wellbore:	NORTH PLATTE P41-T44-28HNB PWB

Plot reference wellpath is NORTH PLATTE P41-T44-28HNB PWP (REV-B 0)

True vertical depths are referenced to RIG (17KB) (RKB)	* = Wellpath was transformed from a different geodetic datum
Measured depths are referenced to RIG (17KB) (RKB)	North Reference: True north
RIG (17KB) (RKB) to Mean Sea Level: 4565 feet	Scale: True distance
Mean Sea Level to Mud line (At Slot: SLOT07 NORTH PLATTE P41-764-28HNB (353FNL & 341FEL SEC.28): 0 feet	Depths are in feet
Coordinates are in feet referenced to Slot	Created by: ingrijanni on 2017-12-21
	Database: Denver

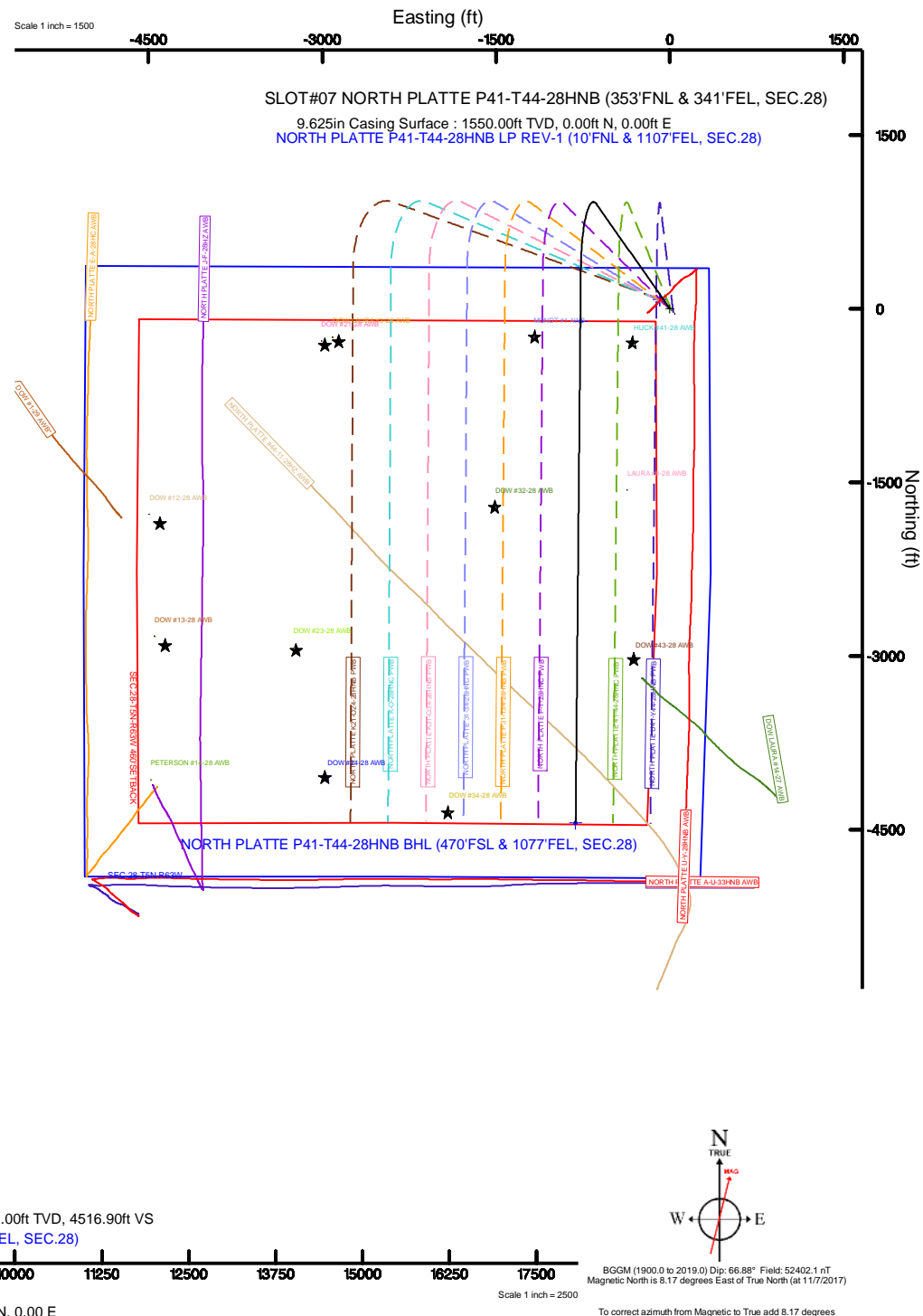
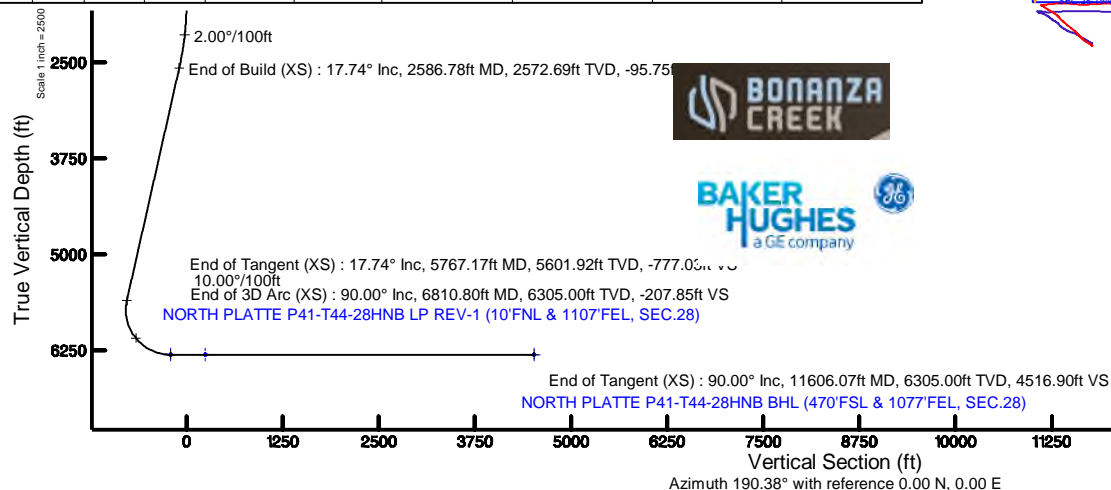
Facility Name				Grid East (US ft)	Grid North (US ft)	Latitude	Longitude
SEC.28-TSN-R63W				3294914.220	1380434.000	40°22'22.300"N	104°26'29.400"W
Slot	Local N (ft)	Local E (ft)	Grid East (US ft)	Grid North (US ft)	Latitude	Longitude	
SLOT#07 NORTH PLATE P41-T44-28HNB (353FNL & 341FEL, SEC.28)	1410.73	2550.21	3297447.298	1381875.004	40°22'36.239"N	104°25'36.449"W	
RIG (17KRB) (RKB) to Mud line (A Slot: SLOT#07 NORTH PLATE P41-T44-28HNB (353FNL & 341FEL, SEC.28))						4565ft	
Mean Sea Level to Mud line (A Slot: SLOT#07 NORTH PLATE P41-T44-28HNB (353FNL & 341FEL, SEC.28))						0ft	
RIG (17KRB) (RKB) to Mean Sea Level						4565ft	

Design Comment	MD (ft)	Inc (°)	Az (°)	TVD (ft)	Local N (ft)	Local E (ft)	DLS (°/100ft)	VS (ft)
Tie On	17.00	0.000	325.061	17.00	0.00	0.00	0.00	0.00
End of Tangent	1700.00	0.000	325.061	1700.00	0.00	0.00	0.00	0.00
End of Build (XS)	2586.78	17.736	325.061	2572.69	111.62	-77.98	2.00	-95.75
End of Tangent (XS)	5767.17	17.736	325.061	5601.92	905.83	-632.82	0.00	-777.03
End of 3D Arc (XS)	6810.80	90.000	180.538	6305.00	352.03	-768.53	10.00	-207.85
End of Tangent (XS)	11606.07	90.000	180.538	6305.00	-4443.03	-813.55	0.00	4516.90

Name	Start MD (ft)	End MD (ft)	Interval (ft)	Start TVD (ft)	End TVD (ft)	Start Local N (ft)	Start Local E (ft)	End Local N (ft)	End Local E (ft)	Wellbore
9.625in Casing Surface	17.00	1550.00	1533.00	17.00	1550.00	0.00	0.00	0.00	0.00	NORTH PLATTE P41-T44-28B/PWB

Start MD (ft)	End MD (ft)	Tool	Model	Log Name/Comment	Wellbore
17.00	1550.00	BHI NavTrak	Custom BHI NavTrak (Standard Rotating+Azal Corr) (Rockies 0.03Gr model)		NORTH PLATTE P41-T44-28HNB PWB
1550.00	11606.07	BHI AutoTrak Curve	Custom BHI AutoTrak Curve (Azal Corr, Short spacing) (Rockies 0.03Gr model)		NORTH PLATTE P41-T44-28HNB PWB

MD (ft)	Inc (°)	Az (°)	TVD (ft)	Local N (ft)	Local E (ft)	Grid East (US ft)	Grid North (US ft)	Latitude	Longitude
11606.07	90.000	180.538	6305.00	-4443.03	-813.55	3296687.33	1377422.69	40°21'52.334"N	104°26'06.959"W





# Planned Wellpath Report

## NORTH PLATTE P41-T44-28HNB PWP (REV-B.0)

Page 1 of 8



### REFERENCE WELLPATH IDENTIFICATION

Operator	BONANZA CREEK OIL COMPANY	Slot	SLOT#07 NORTH PLATTE P41-T44-28HNB (353'FNL & 341'FEL, SEC.28)
Area	COLORADO	Well	NORTH PLATTE P41-T44-28HNB
Field	WELD COUNTY	Wellbore	NORTH PLATTE P41-T44-28HNB PWB
Facility	SEC.28-T5N-R63W		

### REPORT SETUP INFORMATION

Projection System	NAD83 / Lambert Colorado SP, Northern Zone (501), US feet	Software System	WellArchitect® 5.0
North Reference	True	User	Ingmjmr
Scale	0.999959	Report Generated	12/21/2017 at 2:25:11 PM
Convergence at slot	0.69° East	Database/Source file	Denver/NORTH_PLATTE_P41-T44-28HNB_PWP__REV-B.0_.xml

### WELLPATH LOCATION

	Local coordinates		Grid coordinates		Geographic coordinates	
	North[ft]	East[ft]	Easting[US ft]	Northing[US ft]	Latitude	Longitude
Slot Location	1410.73	2550.21	3297447.30	1381875.00	40°22'36.239"N	104°25'56.449"W
Facility Reference Pt			3294914.22	1380434.00	40°22'22.300"N	104°26'29.400"W
Field Reference Pt			3224525.77	1254425.87	40°01'44.400"N	104°41'53.556"W

### WELLPATH DATUM

Calculation method	Minimum curvature	RIG (17'KB) (RKB) to Installation Vertical Datum	4565.00ft
Horizontal Reference Pt	Slot	RIG (17'KB) (RKB) to Mean Sea Level	4565.00ft
Vertical Reference Pt	RIG (17'KB) (RKB)	RIG (17'KB) (RKB) to Mud Line at Slot (SLOT#07 NORTH PLATTE P41-T44-28HNB (353'FNL & 341'FEL, SEC.28))	4565.00ft
MD Reference Pt	RIG (17'KB) (RKB)	Section Origin	N 0.00, E 0.00 ft
Field Vertical Reference	Mean Sea Level	Section Azimuth	190.38°



# Planned Wellpath Report

## NORTH PLATTE P41-T44-28HNB PWP (REV-B.0)

Page 2 of 8



REFERENCE WELLPATH IDENTIFICATION			
Operator	BONANZA CREEK OIL COMPANY	Slot	SLOT#07 NORTH PLATTE P41-T44-28HNB (353'FNL & 341'FEL, SEC.28)
Area	COLORADO	Well	NORTH PLATTE P41-T44-28HNB
Field	WELD COUNTY	Wellbore	NORTH PLATTE P41-T44-28HNB PWB
Facility	SEC.28-T5N-R63W		

WELLPATH DATA (122 stations) † = interpolated/extrapolated station										
MD [ft]	Inclination [°]	Azimuth [°]	TVD [ft]	Vert Sect [ft]	North [ft]	East [ft]	Latitude	Longitude	DLS [°/100ft]	Comments
0.00†	0.000	325.061	0.00	0.00	0.00	0.00	40°22'36.239"N	104°25'56.449"W	0.00	
17.00	0.000	325.061	17.00	0.00	0.00	0.00	40°22'36.239"N	104°25'56.449"W	0.00	Tie On
117.00†	0.000	325.061	117.00	0.00	0.00	0.00	40°22'36.239"N	104°25'56.449"W	0.00	
217.00†	0.000	325.061	217.00	0.00	0.00	0.00	40°22'36.239"N	104°25'56.449"W	0.00	
317.00†	0.000	325.061	317.00	0.00	0.00	0.00	40°22'36.239"N	104°25'56.449"W	0.00	
417.00†	0.000	325.061	417.00	0.00	0.00	0.00	40°22'36.239"N	104°25'56.449"W	0.00	
517.00†	0.000	325.061	517.00	0.00	0.00	0.00	40°22'36.239"N	104°25'56.449"W	0.00	
617.00†	0.000	325.061	617.00	0.00	0.00	0.00	40°22'36.239"N	104°25'56.449"W	0.00	
717.00†	0.000	325.061	717.00	0.00	0.00	0.00	40°22'36.239"N	104°25'56.449"W	0.00	
817.00†	0.000	325.061	817.00	0.00	0.00	0.00	40°22'36.239"N	104°25'56.449"W	0.00	
917.00†	0.000	325.061	917.00	0.00	0.00	0.00	40°22'36.239"N	104°25'56.449"W	0.00	
1017.00†	0.000	325.061	1017.00	0.00	0.00	0.00	40°22'36.239"N	104°25'56.449"W	0.00	
1117.00†	0.000	325.061	1117.00	0.00	0.00	0.00	40°22'36.239"N	104°25'56.449"W	0.00	
1217.00†	0.000	325.061	1217.00	0.00	0.00	0.00	40°22'36.239"N	104°25'56.449"W	0.00	
1317.00†	0.000	325.061	1317.00	0.00	0.00	0.00	40°22'36.239"N	104°25'56.449"W	0.00	
1417.00†	0.000	325.061	1417.00	0.00	0.00	0.00	40°22'36.239"N	104°25'56.449"W	0.00	
1517.00†	0.000	325.061	1517.00	0.00	0.00	0.00	40°22'36.239"N	104°25'56.449"W	0.00	
1617.00†	0.000	325.061	1617.00	0.00	0.00	0.00	40°22'36.239"N	104°25'56.449"W	0.00	
1700.00	0.000	325.061	1700.00	0.00	0.00	0.00	40°22'36.239"N	104°25'56.449"W	0.00	End of Tangent
1717.00†	0.340	325.061	1717.00	-0.04	0.04	-0.03	40°22'36.239"N	104°25'56.449"W	2.00	
1817.00†	2.340	325.061	1816.97	-1.68	1.96	-1.37	40°22'36.258"N	104°25'56.467"W	2.00	
1917.00†	4.340	325.061	1916.79	-5.78	6.73	-4.70	40°22'36.306"N	104°25'56.510"W	2.00	
2017.00†	6.340	325.061	2016.35	-12.32	14.36	-10.03	40°22'36.381"N	104°25'56.579"W	2.00	
2117.00†	8.340	325.061	2115.53	-21.30	24.84	-17.35	40°22'36.484"N	104°25'56.673"W	2.00	
2217.00†	10.340	325.061	2214.20	-32.72	38.14	-26.64	40°22'36.616"N	104°25'56.793"W	2.00	
2317.00†	12.340	325.061	2312.24	-46.54	54.26	-37.90	40°22'36.775"N	104°25'56.939"W	2.00	
2417.00†	14.340	325.061	2409.54	-62.77	73.17	-51.12	40°22'36.962"N	104°25'57.109"W	2.00	
2517.00†	16.340	325.061	2505.97	-81.37	94.86	-66.27	40°22'37.176"N	104°25'57.305"W	2.00	
2586.78	17.736	325.061	2572.69	-95.75	111.62	-77.98	40°22'37.342"N	104°25'57.457"W	2.00	End of Build (XS)
2617.00†	17.736	325.061	2601.47	-102.22	119.16	-83.25	40°22'37.417"N	104°25'57.525"W	0.00	



# Planned Wellpath Report

## NORTH PLATTE P41-T44-28HNB PWP (REV-B.0)

Page 3 of 8



REFERENCE WELLPATH IDENTIFICATION			
Operator	BONANZA CREEK OIL COMPANY	Slot	SLOT#07 NORTH PLATTE P41-T44-28HNB (353'FNL & 341'FEL, SEC.28)
Area	COLORADO	Well	NORTH PLATTE P41-T44-28HNB
Field	WELD COUNTY	Wellbore	NORTH PLATTE P41-T44-28HNB PWB
Facility	SEC.28-T5N-R63W		

WELLPATH DATA (122 stations) † = interpolated/extrapolated station										
MD [ft]	Inclination [°]	Azimuth [°]	TVD [ft]	Vert Sect [ft]	North [ft]	East [ft]	Latitude	Longitude	DLS [°/100ft]	Comments
2717.00†	17.736	325.061	2696.72	-123.64	144.14	-100.69	40°22'37.663"N	104°25'57.750"W	0.00	
2817.00†	17.736	325.061	2791.96	-145.06	169.11	-118.14	40°22'37.910"N	104°25'57.975"W	0.00	
2917.00†	17.736	325.061	2887.21	-166.48	194.08	-135.59	40°22'38.157"N	104°25'58.201"W	0.00	
3017.00†	17.736	325.061	2982.46	-187.91	219.05	-153.03	40°22'38.404"N	104°25'58.426"W	0.00	
3117.00†	17.736	325.061	3077.71	-209.33	244.02	-170.48	40°22'38.650"N	104°25'58.652"W	0.00	
3217.00†	17.736	325.061	3172.95	-230.75	269.00	-187.92	40°22'38.897"N	104°25'58.877"W	0.00	
3317.00†	17.736	325.061	3268.20	-252.17	293.97	-205.37	40°22'39.144"N	104°25'59.103"W	0.00	
3417.00†	17.736	325.061	3363.45	-273.59	318.94	-222.82	40°22'39.391"N	104°25'59.328"W	0.00	
3517.00†	17.736	325.061	3458.69	-295.01	343.91	-240.26	40°22'39.637"N	104°25'59.553"W	0.00	
3617.00†	17.736	325.061	3553.94	-316.44	368.88	-257.71	40°22'39.884"N	104°25'59.779"W	0.00	
3717.00†	17.736	325.061	3649.19	-337.86	393.86	-275.15	40°22'40.131"N	104°26'00.004"W	0.00	
3817.00†	17.736	325.061	3744.44	-359.28	418.83	-292.60	40°22'40.378"N	104°26'00.230"W	0.00	
3917.00†	17.736	325.061	3839.68	-380.70	443.80	-310.05	40°22'40.624"N	104°26'00.455"W	0.00	
4017.00†	17.736	325.061	3934.93	-402.12	468.77	-327.49	40°22'40.871"N	104°26'00.681"W	0.00	
4117.00†	17.736	325.061	4030.18	-423.54	493.74	-344.94	40°22'41.118"N	104°26'00.906"W	0.00	
4217.00†	17.736	325.061	4125.43	-444.96	518.72	-362.38	40°22'41.365"N	104°26'01.131"W	0.00	
4317.00†	17.736	325.061	4220.67	-466.39	543.69	-379.83	40°22'41.612"N	104°26'01.357"W	0.00	
4417.00†	17.736	325.061	4315.92	-487.81	568.66	-397.27	40°22'41.858"N	104°26'01.582"W	0.00	
4517.00†	17.736	325.061	4411.17	-509.23	593.63	-414.72	40°22'42.105"N	104°26'01.808"W	0.00	
4617.00†	17.736	325.061	4506.41	-530.65	618.61	-432.17	40°22'42.352"N	104°26'02.033"W	0.00	
4717.00†	17.736	325.061	4601.66	-552.07	643.58	-449.61	40°22'42.599"N	104°26'02.259"W	0.00	
4817.00†	17.736	325.061	4696.91	-573.49	668.55	-467.06	40°22'42.845"N	104°26'02.484"W	0.00	
4917.00†	17.736	325.061	4792.16	-594.91	693.52	-484.50	40°22'43.092"N	104°26'02.709"W	0.00	
5017.00†	17.736	325.061	4887.40	-616.34	718.49	-501.95	40°22'43.339"N	104°26'02.935"W	0.00	
5117.00†	17.736	325.061	4982.65	-637.76	743.47	-519.40	40°22'43.586"N	104°26'03.160"W	0.00	
5217.00†	17.736	325.061	5077.90	-659.18	768.44	-536.84	40°22'43.832"N	104°26'03.386"W	0.00	
5317.00†	17.736	325.061	5173.14	-680.60	793.41	-554.29	40°22'44.079"N	104°26'03.611"W	0.00	
5417.00†	17.736	325.061	5268.39	-702.02	818.38	-571.73	40°22'44.326"N	104°26'03.837"W	0.00	
5517.00†	17.736	325.061	5363.64	-723.44	843.35	-589.18	40°22'44.573"N	104°26'04.062"W	0.00	
5617.00†	17.736	325.061	5458.89	-744.87	868.33	-606.63	40°22'44.819"N	104°26'04.287"W	0.00	



# Planned Wellpath Report

## NORTH PLATTE P41-T44-28HNB PWP (REV-B.0)

Page 4 of 8



REFERENCE WELLPATH IDENTIFICATION			
Operator	BONANZA CREEK OIL COMPANY	Slot	SLOT#07 NORTH PLATTE P41-T44-28HNB (353'FNL & 341'FEL, SEC.28)
Area	COLORADO	Well	NORTH PLATTE P41-T44-28HNB
Field	WELD COUNTY	Wellbore	NORTH PLATTE P41-T44-28HNB PWB
Facility	SEC.28-T5N-R63W		

WELLPATH DATA (122 stations) † = interpolated/extrapolated station										
MD [ft]	Inclination [°]	Azimuth [°]	TVD [ft]	Vert Sect [ft]	North [ft]	East [ft]	Latitude	Longitude	DLS [°/100ft]	Comments
5717.00†	17.736	325.061	5554.13	-766.29	893.30	-624.07	40°22'45.066"N	104°26'04.513"W	0.00	
5767.17	17.736	325.061	5601.92	-777.03	905.83	-632.82	40°22'45.190"N	104°26'04.626"W	0.00	End of Tangent (XS)
5817.00†	14.056	312.688	5649.85	-785.61	916.16	-641.62	40°22'45.292"N	104°26'04.740"W	10.00	
5917.00†	10.533	267.145	5747.76	-790.02	923.96	-659.73	40°22'45.369"N	104°26'04.974"W	10.00	
6017.00†	14.902	224.763	5845.48	-777.29	914.35	-677.96	40°22'45.274"N	104°26'05.209"W	10.00	
6117.00†	23.042	206.412	5940.05	-747.79	887.62	-695.76	40°22'45.010"N	104°26'05.439"W	10.00	
6217.00†	32.209	197.675	6028.59	-702.43	844.59	-712.60	40°22'44.585"N	104°26'05.657"W	10.00	
6317.00†	41.729	192.550	6108.42	-642.59	786.57	-727.96	40°22'44.011"N	104°26'05.855"W	10.00	
6417.00†	51.405	189.058	6177.10	-570.08	715.31	-741.38	40°22'43.307"N	104°26'06.029"W	10.00	
6517.00†	61.160	186.404	6232.55	-487.11	632.98	-752.45	40°22'42.494"N	104°26'06.172"W	10.00	
6617.00†	70.958	184.211	6273.08	-396.19	542.09	-760.82	40°22'41.596"N	104°26'06.280"W	10.00	
6717.00†	80.779	182.265	6297.47	-300.10	445.39	-766.26	40°22'40.640"N	104°26'06.350"W	10.00	
6810.80	90.000	180.538	6305.00†	-207.85	352.03	-768.53	40°22'39.718"N	104°26'06.379"W	10.00	End of 3D Arc (XS)
6817.00†	90.000	180.538	6305.00	-201.74	345.83	-768.59	40°22'39.656"N	104°26'06.380"W	0.00	
6917.00†	90.000	180.538	6305.00	-103.21	245.83	-769.53	40°22'38.668"N	104°26'06.392"W	0.00	
7017.00†	90.000	180.538	6305.00	-4.68	145.84	-770.47	40°22'37.680"N	104°26'06.404"W	0.00	
7117.00†	90.000	180.538	6305.00	93.85	45.84	-771.41	40°22'36.692"N	104°26'06.416"W	0.00	
7217.00†	90.000	180.538	6305.00	192.38	-54.15	-772.35	40°22'35.704"N	104°26'06.428"W	0.00	
7317.00†	90.000	180.538	6305.00	290.91	-154.15	-773.28	40°22'34.716"N	104°26'06.440"W	0.00	
7417.00†	90.000	180.538	6305.00	389.43	-254.14	-774.22	40°22'33.728"N	104°26'06.453"W	0.00	
7517.00†	90.000	180.538	6305.00	487.96	-354.14	-775.16	40°22'32.739"N	104°26'06.465"W	0.00	
7617.00†	90.000	180.538	6305.00	586.49	-454.13	-776.10	40°22'31.751"N	104°26'06.477"W	0.00	
7717.00†	90.000	180.538	6305.00	685.02	-554.13	-777.04	40°22'30.763"N	104°26'06.489"W	0.00	
7817.00†	90.000	180.538	6305.00	783.55	-654.13	-777.98	40°22'29.775"N	104°26'06.501"W	0.00	
7917.00†	90.000	180.538	6305.00	882.08	-754.12	-778.92	40°22'28.787"N	104°26'06.513"W	0.00	
8017.00†	90.000	180.538	6305.00	980.61	-854.12	-779.86	40°22'27.799"N	104°26'06.525"W	0.00	
8117.00†	90.000	180.538	6305.00	1079.14	-954.11	-780.79	40°22'26.811"N	104°26'06.537"W	0.00	
8217.00†	90.000	180.538	6305.00	1177.67	-1054.11	-781.73	40°22'25.823"N	104°26'06.549"W	0.00	
8317.00†	90.000	180.538	6305.00	1276.20	-1154.10	-782.67	40°22'24.834"N	104°26'06.561"W	0.00	
8417.00†	90.000	180.538	6305.00	1374.73	-1254.10	-783.61	40°22'23.846"N	104°26'06.573"W	0.00	



# Planned Wellpath Report

## NORTH PLATTE P41-T44-28HNB PWP (REV-B.0)

Page 5 of 8



REFERENCE WELLPATH IDENTIFICATION				
Operator	BONANZA CREEK OIL COMPANY	Slot	SLOT#07 NORTH PLATTE P41-T44-28HNB (353'FNL & 341'FEL, SEC.28)	
Area	COLORADO	Well	NORTH PLATTE P41-T44-28HNB	
Field	WELD COUNTY	Wellbore	NORTH PLATTE P41-T44-28HNB PWB	
Facility	SEC.28-T5N-R63W			

WELLPATH DATA (122 stations) † = interpolated/extrapolated station										
MD [ft]	Inclination [°]	Azimuth [°]	TVD [ft]	Vert Sect [ft]	North [ft]	East [ft]	Latitude	Longitude	DLS [°/100ft]	Comments
8517.00†	90.000	180.538	6305.00	1473.26	-1354.10	-784.55	40°22'22.858"N	104°26'06.586"W	0.00	
8617.00†	90.000	180.538	6305.00	1571.79	-1454.09	-785.49	40°22'21.870"N	104°26'06.598"W	0.00	
8717.00†	90.000	180.538	6305.00	1670.32	-1554.09	-786.43	40°22'20.882"N	104°26'06.610"W	0.00	
8817.00†	90.000	180.538	6305.00	1768.85	-1654.08	-787.37	40°22'19.894"N	104°26'06.622"W	0.00	
8917.00†	90.000	180.538	6305.00	1867.37	-1754.08	-788.30	40°22'18.906"N	104°26'06.634"W	0.00	
9017.00†	90.000	180.538	6305.00	1965.90	-1854.07	-789.24	40°22'17.918"N	104°26'06.646"W	0.00	
9117.00†	90.000	180.538	6305.00	2064.43	-1954.07	-790.18	40°22'16.929"N	104°26'06.658"W	0.00	
9217.00†	90.000	180.538	6305.00	2162.96	-2054.06	-791.12	40°22'15.941"N	104°26'06.670"W	0.00	
9317.00†	90.000	180.538	6305.00	2261.49	-2154.06	-792.06	40°22'14.953"N	104°26'06.682"W	0.00	
9417.00†	90.000	180.538	6305.00	2360.02	-2254.06	-793.00	40°22'13.965"N	104°26'06.694"W	0.00	
9517.00†	90.000	180.538	6305.00	2458.55	-2354.05	-793.94	40°22'12.977"N	104°26'06.706"W	0.00	
9617.00†	90.000	180.538	6305.00	2557.08	-2454.05	-794.88	40°22'11.989"N	104°26'06.719"W	0.00	
9717.00†	90.000	180.538	6305.00	2655.61	-2554.04	-795.81	40°22'11.001"N	104°26'06.731"W	0.00	
9817.00†	90.000	180.538	6305.00	2754.14	-2654.04	-796.75	40°22'10.013"N	104°26'06.743"W	0.00	
9917.00†	90.000	180.538	6305.00	2852.67	-2754.03	-797.69	40°22'09.024"N	104°26'06.755"W	0.00	
10017.00†	90.000	180.538	6305.00	2951.20	-2854.03	-798.63	40°22'08.036"N	104°26'06.767"W	0.00	
10117.00†	90.000	180.538	6305.00	3049.73	-2954.02	-799.57	40°22'07.048"N	104°26'06.779"W	0.00	
10217.00†	90.000	180.538	6305.00	3148.26	-3054.02	-800.51	40°22'06.060"N	104°26'06.791"W	0.00	
10317.00†	90.000	180.538	6305.00	3246.79	-3154.02	-801.45	40°22'05.072"N	104°26'06.803"W	0.00	
10417.00†	90.000	180.538	6305.00	3345.31	-3254.01	-802.39	40°22'04.084"N	104°26'06.815"W	0.00	
10517.00†	90.000	180.538	6305.00	3443.84	-3354.01	-803.32	40°22'03.096"N	104°26'06.827"W	0.00	
10617.00†	90.000	180.538	6305.00	3542.37	-3454.00	-804.26	40°22'02.107"N	104°26'06.839"W	0.00	
10717.00†	90.000	180.538	6305.00	3640.90	-3554.00	-805.20	40°22'01.119"N	104°26'06.851"W	0.00	
10817.00†	90.000	180.538	6305.00	3739.43	-3653.99	-806.14	40°22'00.131"N	104°26'06.864"W	0.00	
10917.00†	90.000	180.538	6305.00	3837.96	-3753.99	-807.08	40°21'59.143"N	104°26'06.876"W	0.00	
11017.00†	90.000	180.538	6305.00	3936.49	-3853.98	-808.02	40°21'58.155"N	104°26'06.888"W	0.00	
11117.00†	90.000	180.538	6305.00	4035.02	-3953.98	-808.96	40°21'57.167"N	104°26'06.900"W	0.00	
11217.00†	90.000	180.538	6305.00	4133.55	-4053.98	-809.90	40°21'56.179"N	104°26'06.912"W	0.00	
11317.00†	90.000	180.538	6305.00	4232.08	-4153.97	-810.83	40°21'55.191"N	104°26'06.924"W	0.00	
11417.00†	90.000	180.538	6305.00	4330.61	-4253.97	-811.77	40°21'54.202"N	104°26'06.936"W	0.00	





# Planned Wellpath Report

## NORTH PLATTE P41-T44-28HNB PWP (REV-B.0)

Page 6 of 8



REFERENCE WELLPATH IDENTIFICATION			
Operator	BONANZA CREEK OIL COMPANY	Slot	SLOT#07 NORTH PLATTE P41-T44-28HNB (353'FNL & 341'FEL, SEC.28)
Area	COLORADO	Well	NORTH PLATTE P41-T44-28HNB
Field	WELD COUNTY	Wellbore	NORTH PLATTE P41-T44-28HNB PWB
Facility	SEC.28-T5N-R63W		

WELLPATH DATA (122 stations) † = interpolated/extrapolated station										
MD [ft]	Inclination [°]	Azimuth [°]	TVD [ft]	Vert Sect [ft]	North [ft]	East [ft]	Latitude	Longitude	DLS [°/100ft]	Comments
11517.00†	90.000	180.538	6305.00	4429.14	-4353.96	-812.71	40°21'53.214"N	104°26'06.948"W	0.00	
11606.07	90.000	180.538	6305.00 <sup>2</sup>	4516.90	-4443.03	-813.55	40°21'52.334"N	104°26'06.959"W	0.00	End of Tangent (XS)

HOLE & CASING SECTIONS									
- Ref Wellbore: NORTH PLATTE P41-T44-28HNB PWB      Ref Wellpath: NORTH PLATTE P41-T44-28HNB PWP (REV-B.0)									
String/Diameter	Start MD [ft]	End MD [ft]	Interval [ft]	Start TVD [ft]	End TVD [ft]	Start N/S [ft]	Start E/W [ft]	End N/S [ft]	End E/W [ft]
9.625in Casing Surface	17.00	1550.00	1533.00	17.00	1550.00	0.00	0.00	0.00	0.00

TARGETS									
Name	MD [ft]	TVD [ft]	North [ft]	East [ft]	Grid East [US ft]	Grid North [US ft]	Latitude	Longitude	Shape
SEC.28-T05N-R63W		-13.00	81.97	-87.53	3297358.79	1381955.91	40°22'37.049"N	104°25'57.580"W	polygon
2) NORTH PLATTE P41-T44-28HNB BHL (470'FSL & 1077'FEL, SEC.28)	11606.07	6305.00	-4443.03	-813.55	3296687.33	1377422.69	40°21'52.334"N	104°26'06.959"W	point
NORTH PLATTE P41-T44-28HNB LP (470'FNL & 1107'FEL, SEC.28)		6305.00	-108.03	-768.53	3296680.15	1381757.74	40°22'35.171"N	104°26'06.379"W	point
1) NORTH PLATTE P41-T44-28HNB LP REV-1 (10'FNL & 1107'FEL, SEC.28)	6810.80	6305.00	352.03	-768.53	3296674.62	1382217.74	40°22'39.718"N	104°26'06.379"W	point
SEC.28-T05N-R63W 460'SETBACKS		6420.00	81.97	-87.53	3297358.79	1381955.91	40°22'37.049"N	104°25'57.580"W	polygon



# Planned Wellpath Report

## NORTH PLATTE P41-T44-28HNB PWP (REV-B.0)

Page 7 of 8



REFERENCE WELLPATH IDENTIFICATION			
Operator	BONANZA CREEK OIL COMPANY	Slot	SLOT#07 NORTH PLATTE P41-T44-28HNB (353'FNL & 341'FEL, SEC.28)
Area	COLORADO	Well	NORTH PLATTE P41-T44-28HNB
Field	WELD COUNTY	Wellbore	NORTH PLATTE P41-T44-28HNB PWB
Facility	SEC.28-T5N-R63W		

SURVEY PROGRAM - Ref Wellbore: NORTH PLATTE P41-T44-28HNB PWB      Ref Wellpath: NORTH PLATTE P41-T44-28HNB PWP (REV-B.0)				
Start MD [ft]	End MD [ft]	Positional Uncertainty Model	Log Name/Comment	Wellbore
17.00	1550.00	Custom BHI NaviTrak (Standard Rotating+Axial Corr) (Rockies 0.03Gt model)		NORTH PLATTE P41-T44-28HNB PWB
1550.00	11606.07	Custom BHI AutoTrak Curve (Axial Corr, Short spacing) (Rockies 0.03Gt model)		NORTH PLATTE P41-T44-28HNB PWB





# Planned Wellpath Report

## NORTH PLATTE P41-T44-28HNB PWP (REV-B.0)

Page 8 of 8



REFERENCE WELLPATH IDENTIFICATION			
Operator	BONANZA CREEK OIL COMPANY	Slot	SLOT#07 NORTH PLATTE P41-T44-28HNB (353'FNL & 341'FEL, SEC.28)
Area	COLORADO	Well	NORTH PLATTE P41-T44-28HNB
Field	WELD COUNTY	Wellbore	NORTH PLATTE P41-T44-28HNB PWB
Facility	SEC.28-T5N-R63W		

DESIGN COMMENTS				
MD [ft]	Inclination [°]	Azimuth [°]	TVD [ft]	Comment
17.00	0.000	325.061	17.00	Tie On
1700.00	0.000	325.061	1700.00	End of Tangent
2586.78	17.736	325.061	2572.69	End of Build (XS)
5767.17	17.736	325.061	5601.92	End of Tangent (XS)
6810.80	90.000	180.538	6305.00	End of 3D Arc (XS)
11606.07	90.000	180.538	6305.00	End of Tangent (XS)