

Location:	COLORADO	Slot:	SLOT#05 NORTH PLATTE P31-T34-28HNB (326°FNL & 370°FEL, SEC.28)
Field:	WELD COUNTY	Well:	NORTH PLATTE P31-T34-28HNB
Facility:	SEC.28-T5N-R63W	Wellbore:	NORTH PLATTE P31-T34-28HNB PWB

Plot reference wellpath is NORTH PLATTE P31-T34-28HNB (REV-B.0)	Grid System: NAD83 / Lambert Colorado SP, Northern Zone (501), US feet
True vertical depths are referenced to RIG (17KB) (RKB)	* = Wellpath was transformed from a different geoidic datum
Measured depths are referenced to RIG (17KB) (RKB)	North Reference: True north
RIG (17KB) (RKB) to Mean Sea Level: 4565 feet	Scale: True distance
Mean Sea Level to Mud line (At Slot: SLOTH05 NORTH PLATTE P31-T34-28HNB (326FNL & 370FEL, SEC.28)); 0 feet	Depths are in feet
Coordinates are in feet referenced to Slot	Created by: ingnjmr on 2017-12-21
	Database: Denver

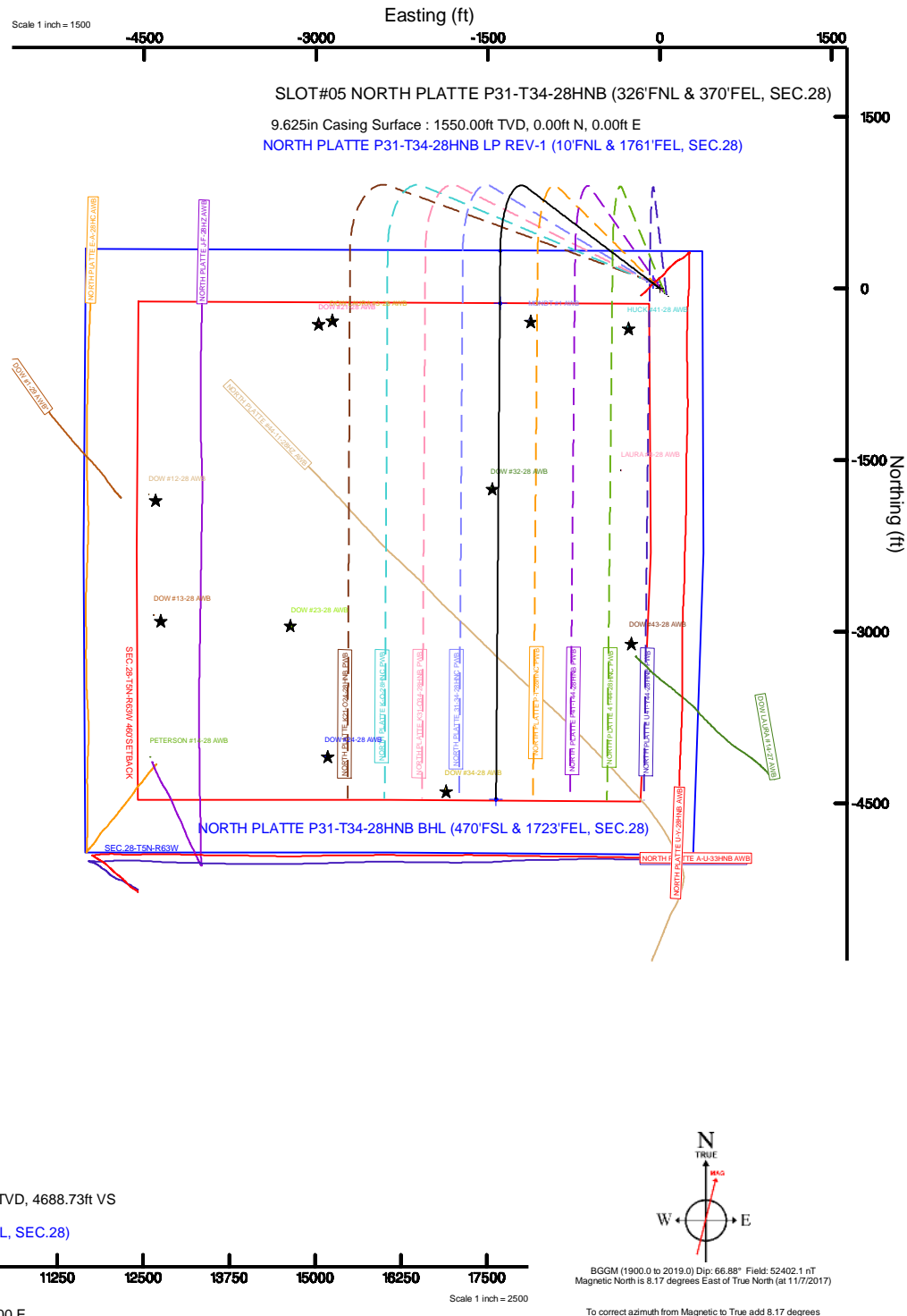
Facility Name				Grid East (US R)	Grid North (US R)	Latitude	Longitude
SEC 28-TN-R3W				3294914.220	1380434.000	40°22'22.300"N	104°26'29.400"W
Slot	Local N (ft)	Local E (ft)	Grid East (US R)	Grid North (US R)	Latitude	Longitude	
SLOT#05 NORTH PLATE P31-T34-28#NB (326FNL & 370FEL, SEC.28)	1438.05	2520.64	3297417.408	1381901.968	40°22'36.500"N	104°25'56.831"W	
RIG (17Kb) (Rb) to Mud line (A Slot SLOT#05 NORTH PLATE P31-T34-28#NB (326FNL & 370FEL, SEC.28))						4565#	
Mean Sea Level to Mud line (A Slot SLOT#05 NORTH PLATE P31-T34-28#NB (326FNL & 370FEL, SEC.28))						0#	
RIG (17Kb) (Rb) to Mean Sea Level						4565#	

Design Comment	MD (ft)	Inc (°)	Az (°)	TVD (ft)	Local N (ft)	Local E (ft)	DLS (°/100ft)	VS (ft)
Tie On	17.00	0.000	307.233	17.00	0.00	0.00	0.00	0.00
End of Tangent	1550.00	0.000	307.233	1550.00	0.00	0.00	0.00	0.00
End of Build (XS)	2678.23	22.565	307.233	2649.29	132.69	-174.61	2.00	-73.12
End of Tangent (XS)	5923.82	22.565	307.233	5646.42	886.24	-1166.19	0.00	-488.35
End of 3D Arc (XS)	6956.67	90.000	180.442	6315.00	330.35	-1392.97	10.00	110.22
End of Tangent (XS)	11752.52	90.000	180.442	6315.00	-4465.35	-1429.98	0.00	4688.73

Name	Start MD (ft)	End MD (ft)	Interval (ft)	Start TVD (ft)	End TVD (ft)	Start Local N (ft)	Start Local E (ft)	End Local N (ft)	End Local E (ft)	Wellbore
9.625in Casing Surface	17.00	1550.00	1533.00	17.00	1550.00	0.00	0.00	0.00	0.00	NORTH PLATTE P31-T34-28NB PWB

Start MD (ft)	End MD (ft)	Tool	Model	Log Name/Comment	Wellbore
17.00	1550.00	BHI NavTrak	Custom BHI NavTrak (Standard Rotating+Areal Core) (Rockies 0.03Gt model)		NORTH PLATTE P31-T34-28HNB PWB
1550.00	11752.52	BHI AutoTrak Curve	Custom BHI AutoTrak Curve (Areal Core, Short spacing) (Rockies 0.03Gt model)		NORTH PLATTE P31-T34-28HNB PWB

MD (ft)	Inc (°)	Az (°)	TVD (ft)	Local N (ft)	Local E (ft)	Grid East (US ft)	Grid North (US ft)	Latitude	Longitude
11752.52	90.000	180.442	6315.00	-4465.35	-1429.98	3296041.35	1377419.92	40°21'52.383"N	104°26'15.304"W





Planned Wellpath Report

NORTH PLATTE P31-T34-28HNB (REV-B.0)

Page 1 of 8



REFERENCE WELLPATH IDENTIFICATION

Operator	BONANZA CREEK OIL COMPANY	Slot	SLOT#05 NORTH PLATTE P31-T34-28HNB (326'FNL & 370'FEL, SEC.28)
Area	COLORADO	Well	NORTH PLATTE P31-T34-28HNB
Field	WELD COUNTY	Wellbore	NORTH PLATTE P31-T34-28HNB PWB
Facility	SEC.28-T5N-R63W		

REPORT SETUP INFORMATION

Projection System	NAD83 / Lambert Colorado SP, Northern Zone (501), US feet	Software System	WellArchitect® 5.0
North Reference	True	User	Ingmjmr
Scale	0.999959	Report Generated	12/21/2017 at 2:15:57 PM
Convergence at slot	0.69° East	Database/Source file	Denver/NORTH_PLATTE_P31-T34-28HNB_REV-B.0_.xml

WELLPATH LOCATION

	Local coordinates		Grid coordinates		Geographic coordinates	
	North[ft]	East[ft]	Easting[US ft]	Northing[US ft]	Latitude	Longitude
Slot Location	1438.05	2520.64	3297417.41	1381901.97	40°22'36.509"N	104°25'56.831"W
Facility Reference Pt			3294914.22	1380434.00	40°22'22.300"N	104°26'29.400"W
Field Reference Pt			3224525.77	1254425.87	40°01'44.400"N	104°41'53.556"W

WELLPATH DATUM

Calculation method	Minimum curvature	RIG (17'KB) (RKB) to Installation Vertical Datum	4565.00ft
Horizontal Reference Pt	Slot	RIG (17'KB) (RKB) to Mean Sea Level	4565.00ft
Vertical Reference Pt	RIG (17'KB) (RKB)	RIG (17'KB) (RKB) to Mud Line at Slot (SLOT#05 NORTH PLATTE P31-T34-28HNB (326'FNL & 370'FEL, SEC.28))	4565.00ft
MD Reference Pt	RIG (17'KB) (RKB)	Section Origin	N 0.00, E 0.00 ft
Field Vertical Reference	Mean Sea Level	Section Azimuth	197.76°



Planned Wellpath Report

NORTH PLATTE P31-T34-28HNB (REV-B.0)

Page 2 of 8



REFERENCE WELLPATH IDENTIFICATION			
Operator	BONANZA CREEK OIL COMPANY	Slot	SLOT#05 NORTH PLATTE P31-T34-28HNB (326'FNL & 370'FEL, SEC.28)
Area	COLORADO	Well	NORTH PLATTE P31-T34-28HNB
Field	WELD COUNTY	Wellbore	NORTH PLATTE P31-T34-28HNB PWB
Facility	SEC.28-T5N-R63W		

WELLPATH DATA (124 stations) † = interpolated/extrapolated station										
MD [ft]	Inclination [°]	Azimuth [°]	TVD [ft]	Vert Sect [ft]	North [ft]	East [ft]	Latitude	Longitude	DLS [°/100ft]	Comments
0.00†	0.000	307.233	0.00	0.00	0.00	0.00	40°22'36.509"N	104°25'56.831"W	0.00	
17.00	0.000	307.233	17.00	0.00	0.00	0.00	40°22'36.509"N	104°25'56.831"W	0.00	Tie On
117.00†	0.000	307.233	117.00	0.00	0.00	0.00	40°22'36.509"N	104°25'56.831"W	0.00	
217.00†	0.000	307.233	217.00	0.00	0.00	0.00	40°22'36.509"N	104°25'56.831"W	0.00	
317.00†	0.000	307.233	317.00	0.00	0.00	0.00	40°22'36.509"N	104°25'56.831"W	0.00	
417.00†	0.000	307.233	417.00	0.00	0.00	0.00	40°22'36.509"N	104°25'56.831"W	0.00	
517.00†	0.000	307.233	517.00	0.00	0.00	0.00	40°22'36.509"N	104°25'56.831"W	0.00	
617.00†	0.000	307.233	617.00	0.00	0.00	0.00	40°22'36.509"N	104°25'56.831"W	0.00	
717.00†	0.000	307.233	717.00	0.00	0.00	0.00	40°22'36.509"N	104°25'56.831"W	0.00	
817.00†	0.000	307.233	817.00	0.00	0.00	0.00	40°22'36.509"N	104°25'56.831"W	0.00	
917.00†	0.000	307.233	917.00	0.00	0.00	0.00	40°22'36.509"N	104°25'56.831"W	0.00	
1017.00†	0.000	307.233	1017.00	0.00	0.00	0.00	40°22'36.509"N	104°25'56.831"W	0.00	
1117.00†	0.000	307.233	1117.00	0.00	0.00	0.00	40°22'36.509"N	104°25'56.831"W	0.00	
1217.00†	0.000	307.233	1217.00	0.00	0.00	0.00	40°22'36.509"N	104°25'56.831"W	0.00	
1317.00†	0.000	307.233	1317.00	0.00	0.00	0.00	40°22'36.509"N	104°25'56.831"W	0.00	
1417.00†	0.000	307.233	1417.00	0.00	0.00	0.00	40°22'36.509"N	104°25'56.831"W	0.00	
1517.00†	0.000	307.233	1517.00	0.00	0.00	0.00	40°22'36.509"N	104°25'56.831"W	0.00	
1550.00	0.000	307.233	1550.00	0.00	0.00	0.00	40°22'36.509"N	104°25'56.831"W	0.00	End of Tangent
1617.00†	1.340	307.233	1616.99	-0.26	0.47	-0.62	40°22'36.514"N	104°25'56.839"W	2.00	
1717.00†	3.340	307.233	1716.91	-1.62	2.94	-3.87	40°22'36.538"N	104°25'56.881"W	2.00	
1817.00†	5.340	307.233	1816.61	-4.15	7.52	-9.90	40°22'36.583"N	104°25'56.959"W	2.00	
1917.00†	7.340	307.233	1916.00	-7.83	14.20	-18.69	40°22'36.649"N	104°25'57.073"W	2.00	
2017.00†	9.340	307.233	2014.93	-12.66	22.98	-30.24	40°22'36.736"N	104°25'57.222"W	2.00	
2117.00†	11.340	307.233	2113.31	-18.65	33.84	-44.53	40°22'36.843"N	104°25'57.406"W	2.00	
2217.00†	13.340	307.233	2210.99	-25.77	46.77	-61.54	40°22'36.971"N	104°25'57.626"W	2.00	
2317.00†	15.340	307.233	2307.87	-34.03	61.75	-81.26	40°22'37.119"N	104°25'57.881"W	2.00	
2417.00†	17.340	307.233	2403.83	-43.41	78.78	-103.66	40°22'37.287"N	104°25'58.170"W	2.00	
2517.00†	19.340	307.233	2498.74	-53.90	97.81	-128.71	40°22'37.476"N	104°25'58.494"W	2.00	
2617.00†	21.340	307.233	2592.50	-65.49	118.84	-156.38	40°22'37.683"N	104°25'58.852"W	2.00	
2678.23	22.565	307.233	2649.29	-73.12	132.69	-174.61	40°22'37.820"N	104°25'59.087"W	2.00	End of Build (XS)



Planned Wellpath Report

NORTH PLATTE P31-T34-28HNB (REV-B.0)

Page 3 of 8



REFERENCE WELLPATH IDENTIFICATION			
Operator	BONANZA CREEK OIL COMPANY	Slot	SLOT#05 NORTH PLATTE P31-T34-28HNB (326'FNL & 370'FEL, SEC.28)
Area	COLORADO	Well	NORTH PLATTE P31-T34-28HNB
Field	WELD COUNTY	Wellbore	NORTH PLATTE P31-T34-28HNB PWB
Facility	SEC.28-T5N-R63W		

WELLPATH DATA (124 stations) † = interpolated/extrapolated station										
MD [ft]	Inclination [°]	Azimuth [°]	TVD [ft]	Vert Sect [ft]	North [ft]	East [ft]	Latitude	Longitude	DLS [°/100ft]	Comments
2717.00†	22.565	307.233	2685.09	-78.08	141.69	-186.45	40°22'37.909"N	104°25'59.240"W	0.00	
2817.00†	22.565	307.233	2777.44	-90.87	164.91	-217.00	40°22'38.139"N	104°25'59.635"W	0.00	
2917.00†	22.565	307.233	2869.78	-103.67	188.13	-247.56	40°22'38.368"N	104°26'00.030"W	0.00	
3017.00†	22.565	307.233	2962.13	-116.46	211.35	-278.11	40°22'38.597"N	104°26'00.424"W	0.00	
3117.00†	22.565	307.233	3054.47	-129.25	234.56	-308.66	40°22'38.827"N	104°26'00.819"W	0.00	
3217.00†	22.565	307.233	3146.82	-142.05	257.78	-339.21	40°22'39.056"N	104°26'01.214"W	0.00	
3317.00†	22.565	307.233	3239.16	-154.84	281.00	-369.76	40°22'39.286"N	104°26'01.609"W	0.00	
3417.00†	22.565	307.233	3331.51	-167.64	304.22	-400.31	40°22'39.515"N	104°26'02.003"W	0.00	
3517.00†	22.565	307.233	3423.85	-180.43	327.44	-430.87	40°22'39.745"N	104°26'02.398"W	0.00	
3617.00†	22.565	307.233	3516.20	-193.22	350.65	-461.42	40°22'39.974"N	104°26'02.793"W	0.00	
3717.00†	22.565	307.233	3608.54	-206.02	373.87	-491.97	40°22'40.203"N	104°26'03.188"W	0.00	
3817.00†	22.565	307.233	3700.88	-218.81	397.09	-522.52	40°22'40.433"N	104°26'03.583"W	0.00	
3917.00†	22.565	307.233	3793.23	-231.60	420.31	-553.07	40°22'40.662"N	104°26'03.977"W	0.00	
4017.00†	22.565	307.233	3885.57	-244.40	443.52	-583.62	40°22'40.892"N	104°26'04.372"W	0.00	
4117.00†	22.565	307.233	3977.92	-257.19	466.74	-614.17	40°22'41.121"N	104°26'04.767"W	0.00	
4217.00†	22.565	307.233	4070.26	-269.99	489.96	-644.73	40°22'41.351"N	104°26'05.162"W	0.00	
4317.00†	22.565	307.233	4162.61	-282.78	513.18	-675.28	40°22'41.580"N	104°26'05.556"W	0.00	
4417.00†	22.565	307.233	4254.95	-295.57	536.39	-705.83	40°22'41.809"N	104°26'05.951"W	0.00	
4517.00†	22.565	307.233	4347.30	-308.37	559.61	-736.38	40°22'42.039"N	104°26'06.346"W	0.00	
4617.00†	22.565	307.233	4439.64	-321.16	582.83	-766.93	40°22'42.268"N	104°26'06.741"W	0.00	
4717.00†	22.565	307.233	4531.99	-333.95	606.05	-797.48	40°22'42.498"N	104°26'07.135"W	0.00	
4817.00†	22.565	307.233	4624.33	-346.75	629.26	-828.04	40°22'42.727"N	104°26'07.530"W	0.00	
4917.00†	22.565	307.233	4716.68	-359.54	652.48	-858.59	40°22'42.956"N	104°26'07.925"W	0.00	
5017.00†	22.565	307.233	4809.02	-372.34	675.70	-889.14	40°22'43.186"N	104°26'08.320"W	0.00	
5117.00†	22.565	307.233	4901.37	-385.13	698.92	-919.69	40°22'43.415"N	104°26'08.715"W	0.00	
5217.00†	22.565	307.233	4993.71	-397.92	722.13	-950.24	40°22'43.645"N	104°26'09.109"W	0.00	
5317.00†	22.565	307.233	5086.06	-410.72	745.35	-980.79	40°22'43.874"N	104°26'09.504"W	0.00	
5417.00†	22.565	307.233	5178.40	-423.51	768.57	-1011.35	40°22'44.104"N	104°26'09.899"W	0.00	
5517.00†	22.565	307.233	5270.74	-436.30	791.79	-1041.90	40°22'44.333"N	104°26'10.294"W	0.00	
5617.00†	22.565	307.233	5363.09	-449.10	815.00	-1072.45	40°22'44.562"N	104°26'10.688"W	0.00	



Planned Wellpath Report

NORTH PLATTE P31-T34-28HNB (REV-B.0)

Page 4 of 8



REFERENCE WELLPATH IDENTIFICATION			
Operator	BONANZA CREEK OIL COMPANY	Slot	SLOT#05 NORTH PLATTE P31-T34-28HNB (326'FNL & 370'FEL, SEC.28)
Area	COLORADO	Well	NORTH PLATTE P31-T34-28HNB
Field	WELD COUNTY	Wellbore	NORTH PLATTE P31-T34-28HNB PWB
Facility	SEC.28-T5N-R63W		

WELLPATH DATA (124 stations) † = interpolated/extrapolated station

MD [ft]	Inclination [°]	Azimuth [°]	TVD [ft]	Vert Sect [ft]	North [ft]	East [ft]	Latitude	Longitude	DLS [°/100ft]	Comments
5717.00†	22.565	307.233	5455.43	-461.89	838.22	-1103.00	40°22'44.792"N	104°26'11.083"W	0.00	
5817.00†	22.565	307.233	5547.78	-474.69	861.44	-1133.55	40°22'45.021"N	104°26'11.478"W	0.00	
5917.00†	22.565	307.233	5640.12	-487.48	884.66	-1164.10	40°22'45.251"N	104°26'11.873"W	0.00	
5923.82	22.565	307.233	5646.42	-488.35	886.24	-1166.19	40°22'45.266"N	104°26'11.900"W	0.00	End of Tangent (XS)
6017.00†	18.814	282.831	5733.74	-493.03	900.42	-1195.13	40°22'45.406"N	104°26'12.274"W	10.00	
6117.00†	19.337	251.937	5828.49	-481.93	898.87	-1226.68	40°22'45.391"N	104°26'12.681"W	10.00	
6217.00†	24.226	228.137	5921.50	-454.47	880.00	-1257.78	40°22'45.205"N	104°26'13.083"W	10.00	
6317.00†	31.507	213.323	6009.95	-411.49	844.38	-1287.49	40°22'44.853"N	104°26'13.467"W	10.00	
6417.00†	39.887	203.907	6091.15	-354.30	793.10	-1314.90	40°22'44.346"N	104°26'13.821"W	10.00	
6517.00†	48.797	197.381	6162.63	-284.62	727.72	-1339.20	40°22'43.700"N	104°26'14.135"W	10.00	
6617.00†	57.985	192.451	6222.23	-204.59	650.23	-1359.63	40°22'42.934"N	104°26'14.399"W	10.00	
6717.00†	67.329	188.432	6268.12	-116.62	562.97	-1375.57	40°22'42.072"N	104°26'14.605"W	10.00	
6817.00†	76.760	184.933	6298.93	-23.40	468.60	-1386.55	40°22'41.139"N	104°26'14.747"W	10.00	
6917.00†	86.236	181.697	6313.70	72.24	369.99	-1392.23	40°22'40.165"N	104°26'14.820"W	10.00	
6956.67	90.000	180.442	6315.00†	110.22	330.35	-1392.97	40°22'39.773"N	104°26'14.830"W	10.00	End of 3D Arc (XS)
7017.00†	90.000	180.442	6315.00	167.81	270.03	-1393.43	40°22'39.177"N	104°26'14.836"W	0.00	
7117.00†	90.000	180.442	6315.00	263.28	170.03	-1394.21	40°22'38.189"N	104°26'14.846"W	0.00	
7217.00†	90.000	180.442	6315.00	358.75	70.03	-1394.98	40°22'37.201"N	104°26'14.855"W	0.00	
7317.00†	90.000	180.442	6315.00	454.22	-29.96	-1395.75	40°22'36.213"N	104°26'14.865"W	0.00	
7417.00†	90.000	180.442	6315.00	549.68	-129.96	-1396.52	40°22'35.224"N	104°26'14.875"W	0.00	
7517.00†	90.000	180.442	6315.00	645.15	-229.96	-1397.29	40°22'34.236"N	104°26'14.885"W	0.00	
7617.00†	90.000	180.442	6315.00	740.62	-329.96	-1398.06	40°22'33.248"N	104°26'14.895"W	0.00	
7717.00†	90.000	180.442	6315.00	836.09	-429.95	-1398.84	40°22'32.260"N	104°26'14.905"W	0.00	
7817.00†	90.000	180.442	6315.00	931.56	-529.95	-1399.61	40°22'31.272"N	104°26'14.915"W	0.00	
7917.00†	90.000	180.442	6315.00	1027.03	-629.95	-1400.38	40°22'30.284"N	104°26'14.925"W	0.00	
8017.00†	90.000	180.442	6315.00	1122.49	-729.94	-1401.15	40°22'29.296"N	104°26'14.935"W	0.00	
8117.00†	90.000	180.442	6315.00	1217.96	-829.94	-1401.92	40°22'28.307"N	104°26'14.945"W	0.00	
8217.00†	90.000	180.442	6315.00	1313.43	-929.94	-1402.69	40°22'27.319"N	104°26'14.954"W	0.00	
8317.00†	90.000	180.442	6315.00	1408.90	-1029.93	-1403.47	40°22'26.331"N	104°26'14.964"W	0.00	
8417.00†	90.000	180.442	6315.00	1504.37	-1129.93	-1404.24	40°22'25.343"N	104°26'14.974"W	0.00	



Planned Wellpath Report

NORTH PLATTE P31-T34-28HNB (REV-B.0)

Page 5 of 8



REFERENCE WELLPATH IDENTIFICATION			
Operator	BONANZA CREEK OIL COMPANY	Slot	SLOT#05 NORTH PLATTE P31-T34-28HNB (326'FNL & 370'FEL, SEC.28)
Area	COLORADO	Well	NORTH PLATTE P31-T34-28HNB
Field	WELD COUNTY	Wellbore	NORTH PLATTE P31-T34-28HNB PWB
Facility	SEC.28-T5N-R63W		

WELLPATH DATA (124 stations) † = interpolated/extrapolated station

MD [ft]	Inclination [°]	Azimuth [°]	TVD [ft]	Vert Sect [ft]	North [ft]	East [ft]	Latitude	Longitude	DLS [°/100ft]	Comments
8517.00†	90.000	180.442	6315.00	1599.84	-1229.93	-1405.01	40°22'24.355"N	104°26'14.984"W	0.00	
8617.00†	90.000	180.442	6315.00	1695.30	-1329.93	-1405.78	40°22'23.367"N	104°26'14.994"W	0.00	
8717.00†	90.000	180.442	6315.00	1790.77	-1429.92	-1406.55	40°22'22.379"N	104°26'15.004"W	0.00	
8817.00†	90.000	180.442	6315.00	1886.24	-1529.92	-1407.32	40°22'21.390"N	104°26'15.014"W	0.00	
8917.00†	90.000	180.442	6315.00	1981.71	-1629.92	-1408.10	40°22'20.402"N	104°26'15.024"W	0.00	
9017.00†	90.000	180.442	6315.00	2077.18	-1729.91	-1408.87	40°22'19.414"N	104°26'15.034"W	0.00	
9117.00†	90.000	180.442	6315.00	2172.65	-1829.91	-1409.64	40°22'18.426"N	104°26'15.044"W	0.00	
9217.00†	90.000	180.442	6315.00	2268.11	-1929.91	-1410.41	40°22'17.438"N	104°26'15.053"W	0.00	
9317.00†	90.000	180.442	6315.00	2363.58	-2029.90	-1411.18	40°22'16.450"N	104°26'15.063"W	0.00	
9417.00†	90.000	180.442	6315.00	2459.05	-2129.90	-1411.95	40°22'15.462"N	104°26'15.073"W	0.00	
9517.00†	90.000	180.442	6315.00	2554.52	-2229.90	-1412.73	40°22'14.473"N	104°26'15.083"W	0.00	
9617.00†	90.000	180.442	6315.00	2649.99	-2329.90	-1413.50	40°22'13.485"N	104°26'15.093"W	0.00	
9717.00†	90.000	180.442	6315.00	2745.46	-2429.89	-1414.27	40°22'12.497"N	104°26'15.103"W	0.00	
9817.00†	90.000	180.442	6315.00	2840.92	-2529.89	-1415.04	40°22'11.509"N	104°26'15.113"W	0.00	
9917.00†	90.000	180.442	6315.00	2936.39	-2629.89	-1415.81	40°22'10.521"N	104°26'15.123"W	0.00	
10017.00†	90.000	180.442	6315.00	3031.86	-2729.88	-1416.59	40°22'09.533"N	104°26'15.133"W	0.00	
10117.00†	90.000	180.442	6315.00	3127.33	-2829.88	-1417.36	40°22'08.545"N	104°26'15.142"W	0.00	
10217.00†	90.000	180.442	6315.00	3222.80	-2929.88	-1418.13	40°22'07.556"N	104°26'15.152"W	0.00	
10317.00†	90.000	180.442	6315.00	3318.27	-3029.88	-1418.90	40°22'06.568"N	104°26'15.162"W	0.00	
10417.00†	90.000	180.442	6315.00	3413.73	-3129.87	-1419.67	40°22'05.580"N	104°26'15.172"W	0.00	
10517.00†	90.000	180.442	6315.00	3509.20	-3229.87	-1420.44	40°22'04.592"N	104°26'15.182"W	0.00	
10617.00†	90.000	180.442	6315.00	3604.67	-3329.87	-1421.22	40°22'03.604"N	104°26'15.192"W	0.00	
10717.00†	90.000	180.442	6315.00	3700.14	-3429.86	-1421.99	40°22'02.616"N	104°26'15.202"W	0.00	
10817.00†	90.000	180.442	6315.00	3795.61	-3529.86	-1422.76	40°22'01.628"N	104°26'15.212"W	0.00	
10917.00†	90.000	180.442	6315.00	3891.08	-3629.86	-1423.53	40°22'00.639"N	104°26'15.222"W	0.00	
11017.00†	90.000	180.442	6315.00	3986.54	-3729.85	-1424.30	40°21'59.651"N	104°26'15.232"W	0.00	
11117.00†	90.000	180.442	6315.00	4082.01	-3829.85	-1425.07	40°21'58.663"N	104°26'15.241"W	0.00	
11217.00†	90.000	180.442	6315.00	4177.48	-3929.85	-1425.85	40°21'57.675"N	104°26'15.251"W	0.00	
11317.00†	90.000	180.442	6315.00	4272.95	-4029.85	-1426.62	40°21'56.687"N	104°26'15.261"W	0.00	
11417.00†	90.000	180.442	6315.00	4368.42	-4129.84	-1427.39	40°21'55.699"N	104°26'15.271"W	0.00	



Planned Wellpath Report

NORTH PLATTE P31-T34-28HNB (REV-B.0)

Page 6 of 8



REFERENCE WELLPATH IDENTIFICATION			
Operator	BONANZA CREEK OIL COMPANY	Slot	SLOT#05 NORTH PLATTE P31-T34-28HNB (326'FNL & 370'FEL, SEC.28)
Area	COLORADO	Well	NORTH PLATTE P31-T34-28HNB
Field	WELD COUNTY	Wellbore	NORTH PLATTE P31-T34-28HNB PWB
Facility	SEC.28-T5N-R63W		

WELLPATH DATA (124 stations) † = interpolated/extrapolated station										
MD [ft]	Inclination [°]	Azimuth [°]	TVD [ft]	Vert Sect [ft]	North [ft]	East [ft]	Latitude	Longitude	DLS [°/100ft]	Comments
11517.00†	90.000	180.442	6315.00	4463.89	-4229.84	-1428.16	40°21'54.711"N	104°26'15.281"W	0.00	
11617.00†	90.000	180.442	6315.00	4559.35	-4329.84	-1428.93	40°21'53.722"N	104°26'15.291"W	0.00	
11717.00†	90.000	180.442	6315.00	4654.82	-4429.83	-1429.70	40°21'52.734"N	104°26'15.301"W	0.00	
11752.52	90.000	180.442	6315.00 ²	4688.73	-4465.35	-1429.98	40°21'52.383"N	104°26'15.304"W	0.00	End of Tangent (XS)

HOLE & CASING SECTIONS - Ref Wellbore: NORTH PLATTE P31-T34-28HNB PWB Ref Wellpath: NORTH PLATTE P31-T34-28HNB (REV-B.0)									
String/Diameter	Start MD [ft]	End MD [ft]	Interval [ft]	Start TVD [ft]	End TVD [ft]	Start N/S [ft]	Start E/W [ft]	End N/S [ft]	End E/W [ft]
9.625in Casing Surface	17.00	1550.00	1533.00	17.00	1550.00	0.00	0.00	0.00	0.00

TARGETS									
Name	MD [ft]	TVD [ft]	North [ft]	East [ft]	Grid East [US ft]	Grid North [US ft]	Latitude	Longitude	Shape
SEC.28-T05N-R63W		-13.00	54.65	-57.97	3297358.79	1381955.91	40°22'37.049"N	104°25'57.580"W	polygon
2) NORTH PLATTE P31-T34-28HNB BHL (470'FSL & 1723'FEL, SEC.28)	11752.52	6315.00	-4465.35	-1429.98	3296041.35	1377419.92	40°21'52.383"N	104°26'15.304"W	point
NORTH PLATTE P31-T34-28HNB LP (470'FNL & 1761'FEL, SEC.28)		6315.00	-130.35	-1392.97	3296026.17	1381754.86	40°22'35.221"N	104°26'14.829"W	point
1) NORTH PLATTE P31-T34-28HNB LP REV-1 (10'FNL & 1761'FEL, SEC.28)	6956.67	6315.00	330.35	-1392.97	3296020.62	1382215.51	40°22'39.773"N	104°26'14.830"W	point
SEC.28-T05N-R63W 460'SETBACKS		6420.00	54.65	-57.97	3297358.79	1381955.91	40°22'37.049"N	104°25'57.580"W	polygon



Planned Wellpath Report

NORTH PLATTE P31-T34-28HNB (REV-B.0)

Page 7 of 8



REFERENCE WELLPATH IDENTIFICATION			
Operator	BONANZA CREEK OIL COMPANY	Slot	SLOT#05 NORTH PLATTE P31-T34-28HNB (326'FNL & 370'FEL, SEC.28)
Area	COLORADO	Well	NORTH PLATTE P31-T34-28HNB
Field	WELD COUNTY	Wellbore	NORTH PLATTE P31-T34-28HNB PWB
Facility	SEC.28-T5N-R63W		

SURVEY PROGRAM - Ref Wellbore: NORTH PLATTE P31-T34-28HNB PWB Ref Wellpath: NORTH PLATTE P31-T34-28HNB (REV-B.0)				
Start MD [ft]	End MD [ft]	Positional Uncertainty Model	Log Name/Comment	Wellbore
17.00	1550.00	Custom BHI NaviTrak (Standard Rotating+Axial Corr) (Rockies 0.03Gt model)		NORTH PLATTE P31-T34-28HNB PWB
1550.00	11752.52	Custom BHI AutoTrak Curve (Axial Corr, Short spacing) (Rockies 0.03Gt model)		NORTH PLATTE P31-T34-28HNB PWB



Planned Wellpath Report

NORTH PLATTE P31-T34-28HNB (REV-B.0)

Page 8 of 8



REFERENCE WELLPATH IDENTIFICATION			
Operator	BONANZA CREEK OIL COMPANY	Slot	SLOT#05 NORTH PLATTE P31-T34-28HNB (326'FNL & 370'FEL, SEC.28)
Area	COLORADO	Well	NORTH PLATTE P31-T34-28HNB
Field	WELD COUNTY	Wellbore	NORTH PLATTE P31-T34-28HNB PWB
Facility	SEC.28-T5N-R63W		

DESIGN COMMENTS				
MD [ft]	Inclination [°]	Azimuth [°]	TVD [ft]	Comment
17.00	0.000	307.233	17.00	Tie On
1550.00	0.000	307.233	1550.00	End of Tangent
2678.23	22.565	307.233	2649.29	End of Build (XS)
5923.82	22.565	307.233	5646.42	End of Tangent (XS)
6956.67	90.000	180.442	6315.00	End of 3D Arc (XS)
11752.52	90.000	180.442	6315.00	End of Tangent (XS)