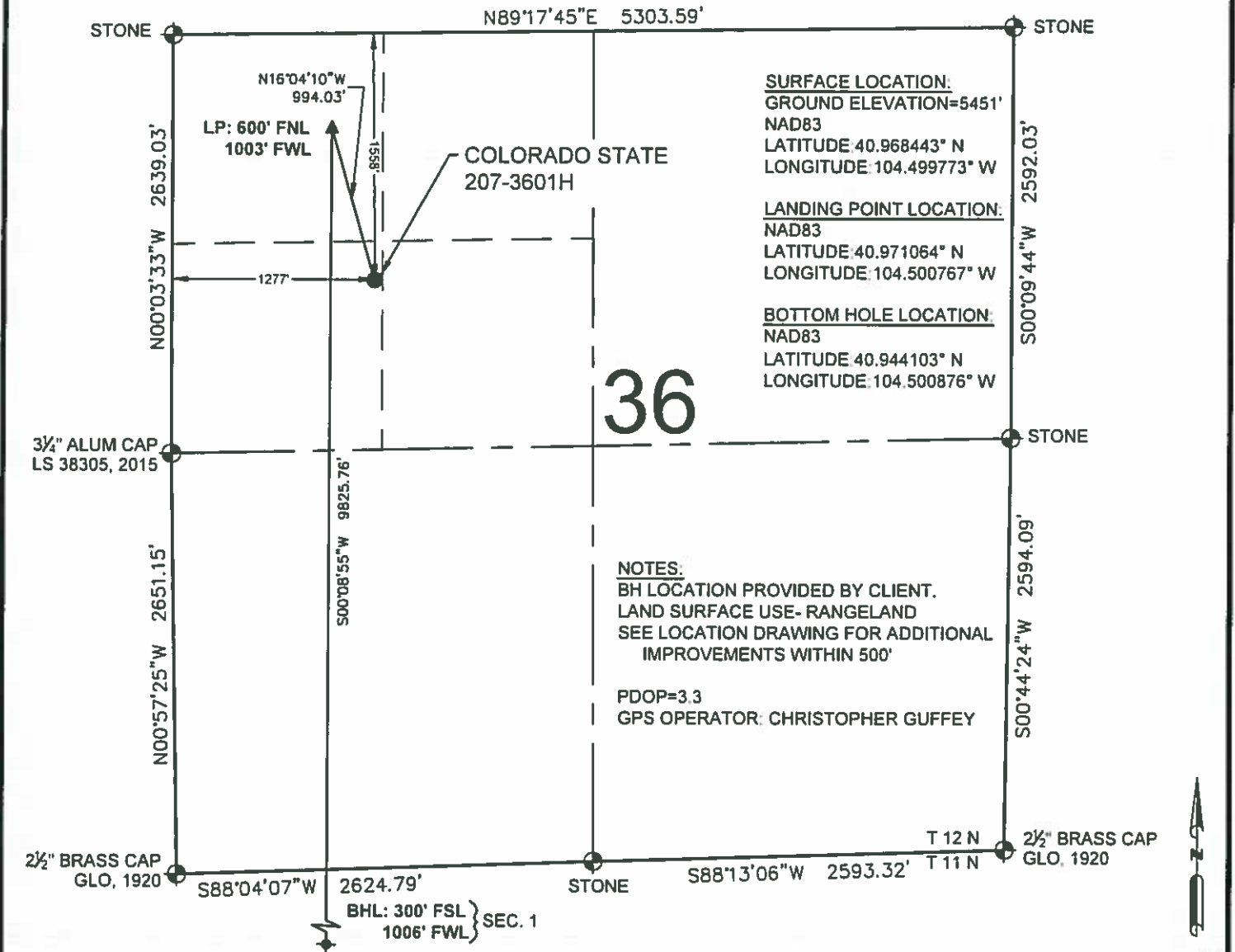


COLORADO STATE 207-3601H WELL LOCATION EXHIBIT



SURFACE LOCATION:
GROUND ELEVATION=5451'
NAD83
LATITUDE 40.968443° N
LONGITUDE 104.499773° W

LANDING POINT LOCATION:
NAD83
LATITUDE 40.971064° N
LONGITUDE 104.500767° W

BOTTOM HOLE LOCATION:
NAD83
LATITUDE 40.944103° N
LONGITUDE 104.500876° W

NOTES:
BH LOCATION PROVIDED BY CLIENT.
LAND SURFACE USE- RANGELAND
SEE LOCATION DRAWING FOR ADDITIONAL
IMPROVEMENTS WITHIN 500'

PDOP=3.3
GPS OPERATOR: CHRISTOPHER GUFFEY

LEGEND

- ⊕ = EXISTING MONUMENT
- = CALCULATED POSITION
- = PROPOSED WELL
- ◆ = EXISTING WELL
- ⬤ = BOTTOM HOLE
- ▲ = LANDING POINT
- LP = LANDING POINT
- BHL = BOTTOM HOLE LOCATION

NOTES

- THIS FIELD SURVEY CONFORMS TO THE MINIMUM STANDARDS SET BY THE C.O.G.C.C. RULE NO. 215
- ALL DISTANCES AND BEARINGS SHOWN HEREON ARE GROUND VALUES AS GPS MEASURED IN THE FIELD, WITH TIES TO WELLS MEASURED PERPENDICULAR TO LINES SHOWN HEREON. THIS LOW DISTORTION PROJECTION (LDP) IS BASED ON THE NORTH AMERICAN DATUM OF 1983, U.S. SURVEY FOOT WITH A LATITUDE ORIGIN OF 40 979270°N, A CENTRAL MERIDIAN LONGITUDE OF 104 542771°W, AND A SCALE FACTOR ON THE CENTRAL MERIDIAN OF 1.000264 (EXACT). THE LDP BASIS OF BEARINGS IS GEODETIC NORTH.
- FIELD VERIFICATION OF MONUMENTS COMPLETED WITHIN 1 YEAR OF SIGNATURE DATE, UNLESS OTHERWISE NOTED.

**WELL COLORADO STATE 207-3601H TO BE
LOCATED 1558' FNL & 1277' FWL**

I, ROBERT J. GUFFEY, A LICENSED PROFESSIONAL LAND SURVEYOR IN THE STATE OF COLORADO, DO HEREBY STATE TO CLEAR CREEK RESOURCE PARTNERS LLC THAT THE WELL LOCATION EXHIBIT SHOWN HEREON WAS PREPARED BY ME OR UNDER MY DIRECT SUPERVISION AND THE DRAWING SHOWN HEREON ACCURATELY DEPICTS THE PROPOSED LOCATION OF THE WELL. THIS EXHIBIT MEETS THE REQUIREMENTS OF A GIS LAND POSITION AS DEFINED BY SECTION 38-51-102 (7.5) C.R.S. AND AS SUCH PER SECTION 38-51-109.3 C.R.S. CANNOT BE RELIED UPON TO DETERMINE OWNERSHIP.

ROBERT J. GUFFEY, PLS 20680
COLORADO LICENSED PROFESSIONAL LAND SURVEYOR
FOR AND ON BEHALF OF P.F.S., LLC
d.b.a. ASCENT GEOMATICS SOLUTIONS

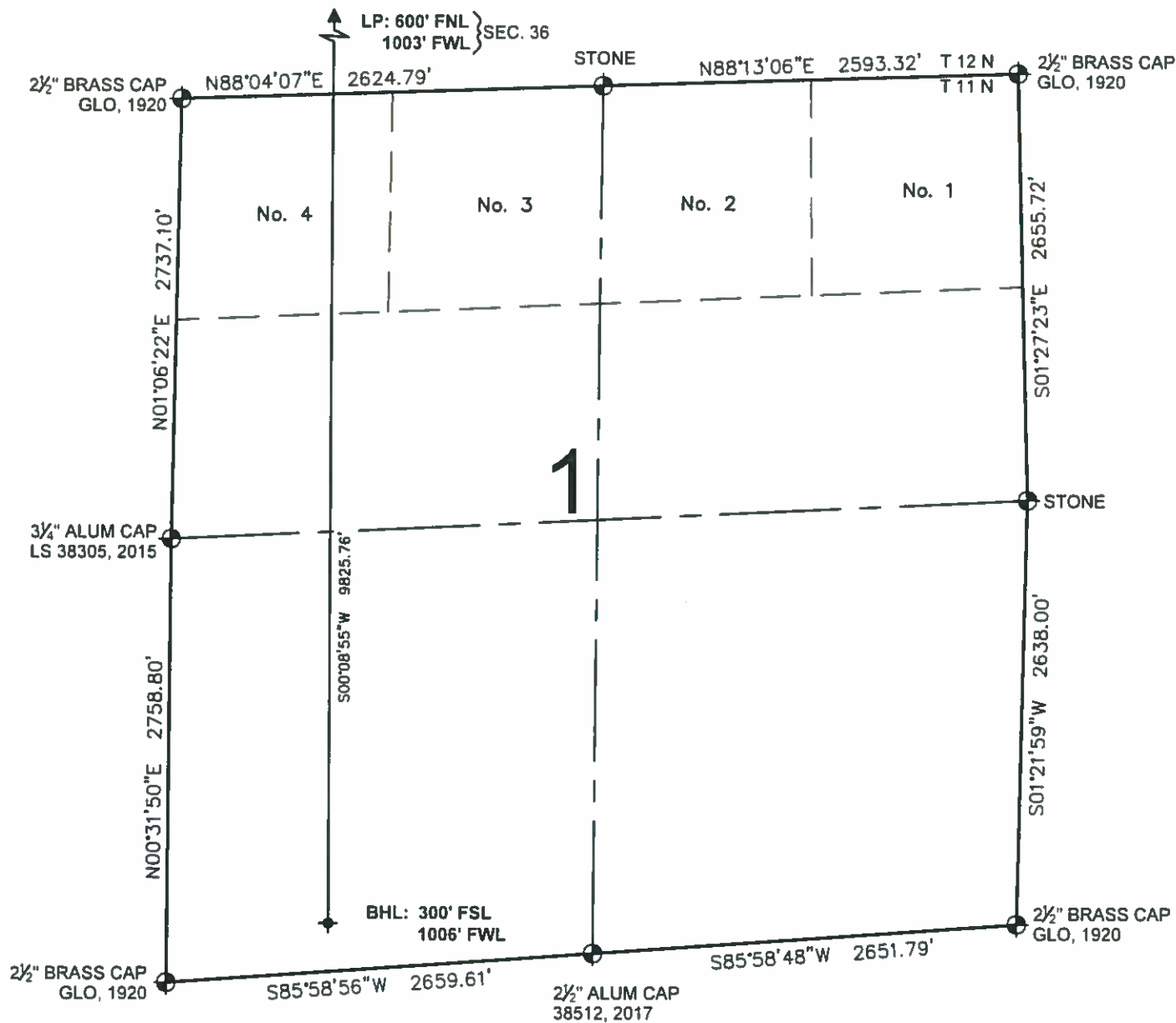


NOTICE: ACCORDING TO COLORADO LAW YOU MUST COMMENCE ANY LEGAL ACTION BASED UPON ANY DEFECT IN THIS SURVEY WITHIN THREE YEARS AFTER YOU FIRST DISCOVER SUCH DEFECT. IN NO EVENT MAY ANY ACTION BASED UPON ANY DEFECT IN THIS SURVEY BE COMMENCED MORE THAN TEN YEARS FROM THIS SAID DATE OF THIS CERTIFICATION SHOWN HEREON.

SHEET 1 OF 2

<p>ASCENT GEOMATICS SOLUTIONS</p>	FIELD DATE: 02-27-18	WELL NAME: COLORADO STATE 207-3601H	PREPARED FOR: CLEAR CREEK Resource Partners
	DRAWING DATE: 03-05-18	SURFACE LOCATION: SW 1/4 NW 1/4 SEC. 36, T12N, R64W, 6TH P.M. WELD COUNTY, COLORADO	
BY: MJE	CHECKED: SMF		

COLORADO STATE 207-3601H WELL LOCATION EXHIBIT



LEGEND

- ⊕ = EXISTING MONUMENT ◆ = BOTTOM HOLE
- = CALCULATED POSITION ▲ = LANDING POINT
- = PROPOSED WELL LP = LANDING POINT
- ◆ = EXISTING WELL BHL = BOTTOM HOLE LOCATION

ROBERT J. GUFFEY, PLS 20680
COLORADO LICENSED PROFESSIONAL LAND SURVEYOR
FOR AND ON BEHALF OF P.F.S., LLC
d.b.a. ASCENT GEOMATICS SOLUTIONS



SHEET 2 OF 2



7535 Hilltop Circle
Denver, CO 80221
(303) 928-7120
www.ascentgeomatics.com

FIELD DATE:
02-27-18

DRAWING DATE:
03-05-18

BY:
MJE

CHECKED:
SMF

WELL NAME:
COLORADO STATE 207-3601H

SURFACE LOCATION:
SW 1/4 NW 1/4 SEC. 36, T12N, R64W, 6TH P.M.
WELD COUNTY, COLORADO

PREPARED FOR:



CLEAR CREEK
Resource Partners