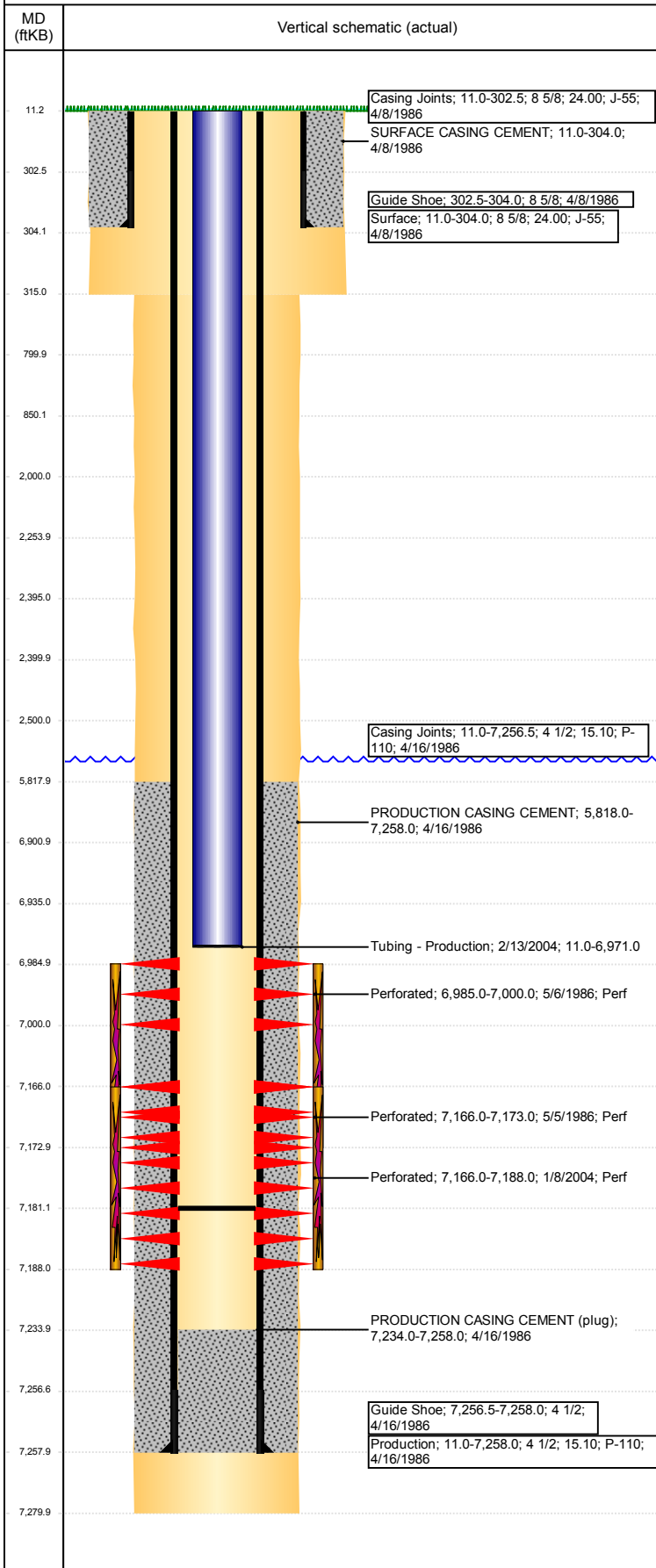


**Well Name: LUCERO 01-34**

VERTICAL - ORIGINAL HOLE, 3/20/2018 3:55:21 PM



## Well Header

API 05-123-13044	Business Unit DJ BASIN	District 15	Well Config VERTICAL
Original KB Elevation (ft) 4,695	KB - GL / MSL (ftKB) 11.00	Spud Date 4/8/1986	P & A Date
Comment			

## Directions To Well

## Congressional Location

Quarter 3 NE	Quarter 4 SW	Section 34	Township 6	TwNShp N/S Dir N	Range 66	Range E/W Dir W
-----------------	-----------------	---------------	---------------	---------------------	-------------	--------------------

## Bottom Hole Location

North-South Distance (ft)	From N or S Line	East-West Distance (ft)	From E or W Line
---------------------------	------------------	-------------------------	------------------

## Plug Back Total Depths

Date	Depth (ftKB)	Method	Com
4/16/1986	7,234.0	TAG	
2/5/2004	7,181.0	TAG	

## Wellbore Sections

Section Des	Size (in)	Act Top, MD (ftKB)	Act Btm, MD (ftKB)
SURFACE	12 1/4	11	315
PRODUCTION	7 7/8	315	7,280

## Zone Statuses

Zone Name	Status Date	Status	Fluid Type	Job	Prod Method
NIOBRARA-C...	5/8/1986	PR	Oil	DRILLING/CO...	
NIOBRARA-C...	2/18/2004	PR	Oil	RE-FRAC, 12/2...	
CODELL	5/8/1986	PR	Oil	DRILLING/CO...	
CODELL	2/18/2004	PR	Oil	RE-FRAC, 12/2...	
CODELL	3/16/2010	PR	Water		Flowing
NIOBRARA	5/8/1986	PR	Oil	DRILLING/CO...	
NIOBRARA	3/16/2010	PR	Water		Flowing

## Casing Strings

### Surface, 304.0ftKB

Casing Description	Run Date	OD (in)	Wt/Len (l...)	Grade	Top, MD (ft...)	MD (ftKB)
Surface	4/8/1986	8 5/8	24.00	J-55	11.0	304.0

### Production, 7,258.0ftKB

Casing Description	Run Date	OD (in)	Wt/Len (l...)	Grade	Top, MD (ft...)	MD (ftKB)
Production	4/16/1986	4 1/2	15.10	P-110	11.0	7,258.0

## Cement

Description	Top Depth (ftKB)	Bottom Depth (ftKB)
SURFACE CASING CEMENT	11.0	304.0
PRODUCTION CASING CEMENT	5,818.0	7,258.0
Cement Squeeze	2,000.0	2,500.0
Balance Plug	2,400.0	2,500.0
Cement Plug	2,254.0	2,395.0
Stub Plug	800.0	850.0
Shoe Plug	11.0	800.0

## Tubing Strings

Tubing Description	Run Date	String...	ID (in)	Wt (lb/ft)	Grade	Len (ft)	Set De...
Tubing - Production	2/13/2004	2 3/8	2.00	4.70	J-55	6,960.00	

## Tubing Components

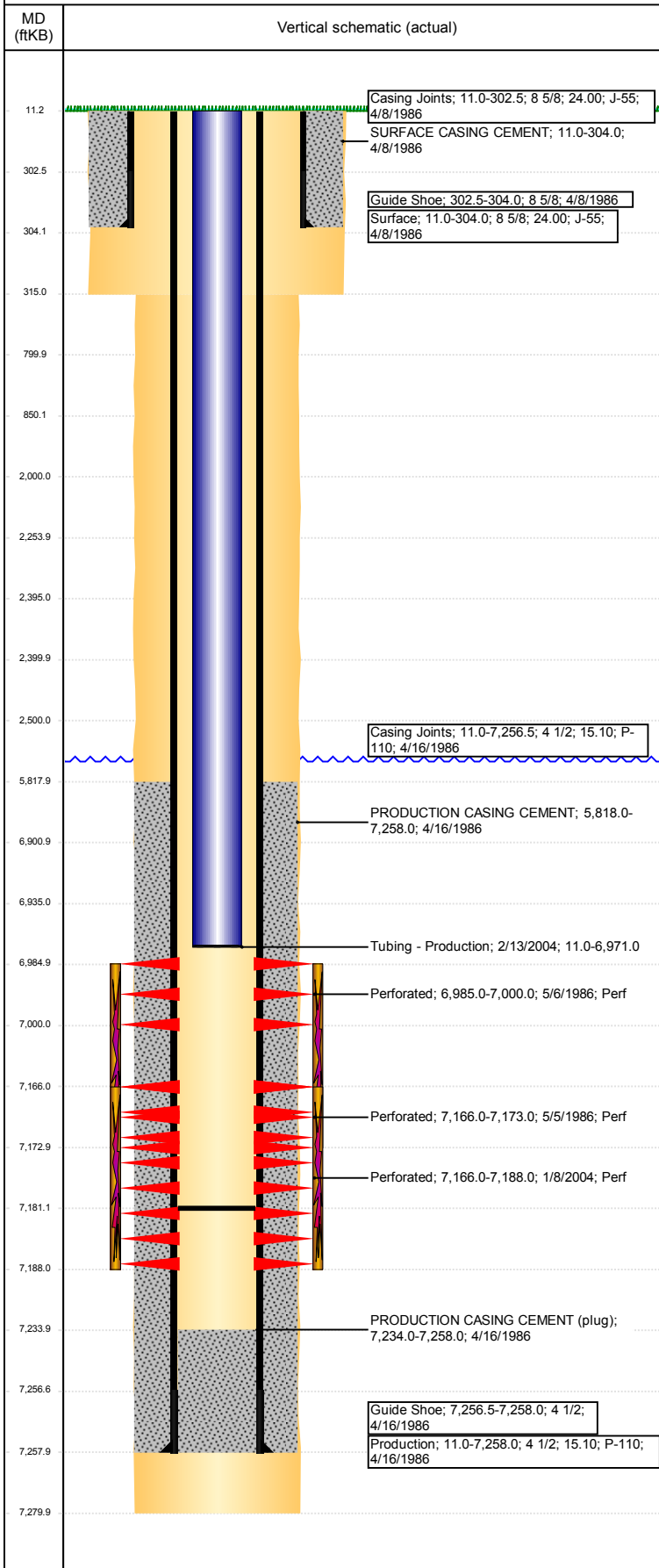
Item Des	OD (in)	Wt (lb/ft)	Grade	Jts	Len (ft)	Btm (ftKB)	Btm (TVD) (ftKB)
EUE 8rd Tubing	2 3/8	4.70	J-55	227	6,958.40	6,969.4	
Seal Nipple	2 3/8			1	1.00	6,970.4	
Notched collar	2 3/8			1	0.60	6,971.0	

## Other In Hole

Run Date	Des	OD (in)	Top (ftKB)	Btm (ftKB)
	Cement Retainer	3.826	2,395.0	2,400.0
2/13/2018	Cast Iron Bridge Plug w/ 2 SX Cement	3.826	6,901.0	6,935.0

**Well Name: LUCERO 01-34**

VERTICAL - ORIGINAL HOLE, 3/20/2018 3:55:22 PM



Logs			
Date	Type	Top, MD (ftKB)	Btm, MD (ftKB)
4/16/1986	COMPENSATED DENSITY	6,800.0	7,261.0
4/16/1986	INDUCTION	307.0	7,258.0
4/21/1986	CEMENT BOND	5,600.0	7,145.0
4/21/1986	PERFORATION	7,000.0	7,172.0

Perforation Data					
Linked Zone	Bnch/St g	Sum of Entered Shot Total	Top (ftKB)	Btm (ftKB)	Date
NIOBRARA, ORIGINAL HOLE	B	0	2,500.00	2,500.00	2/13/2018
CODELL, ORIGINAL HOLE		8	6,985.00	7,000.00	5/6/1986
CODELL, ORIGINAL HOLE		5	7,166.00	7,173.00	5/5/1986
		88	7,166.00	7,188.00	1/8/2004
<b>Total (Sum)</b>		<b>101</b>			

Stimulation Intervals		
Start Date	Primary Job Type	
5/6/1986	DRILLING/COMPLETION - ORIGINAL	
Technical Result	Tech Result Details	Tech Result Note
Comment		
CODELL/NIOBRARA FRAC'D LIMITED ENTRY		
Start Date	Primary Job Type	
1/12/2004	RE-FRAC	
Technical Result	Tech Result Details	Tech Result Note
Comment		
CODELL REFRAC		