

Inspection Photos

API# 071-06436

Operator: Timber Creek

Inspection Number: 680102775

Inspection Date: 3/7/2018





Photo#1:
Overview of Location to Northeast.

March 7, 2018



COLORADO
Oil & Gas Conservation
Commission
Department of Natural Resources

Inspection Photos: Timber Creek PA API#071-06436



Photo#2:
Unstable conditions of East Cut Bank of Access Rd.

March 7, 2018



COLORADO
Oil & Gas Conservation
Commission
Department of Natural Resources

Inspection Photos: Timber Creek PA API#071-06436



Photo#3:
Plastic & Metal Piping, risers & valves remain
in creek bottom Southwest of Well.

March 7, 2018



Photo#4:
Refer to Photo#3 description.



COLORADO
Oil & Gas Conservation
Commission
Department of Natural Resources

Inspection Photos: Timber Creek PA API#071-06436



Photo#5:
Plastic & Metal Piping, risers & valves remain
in creek bottom Southwest of Well.

March 7, 2018

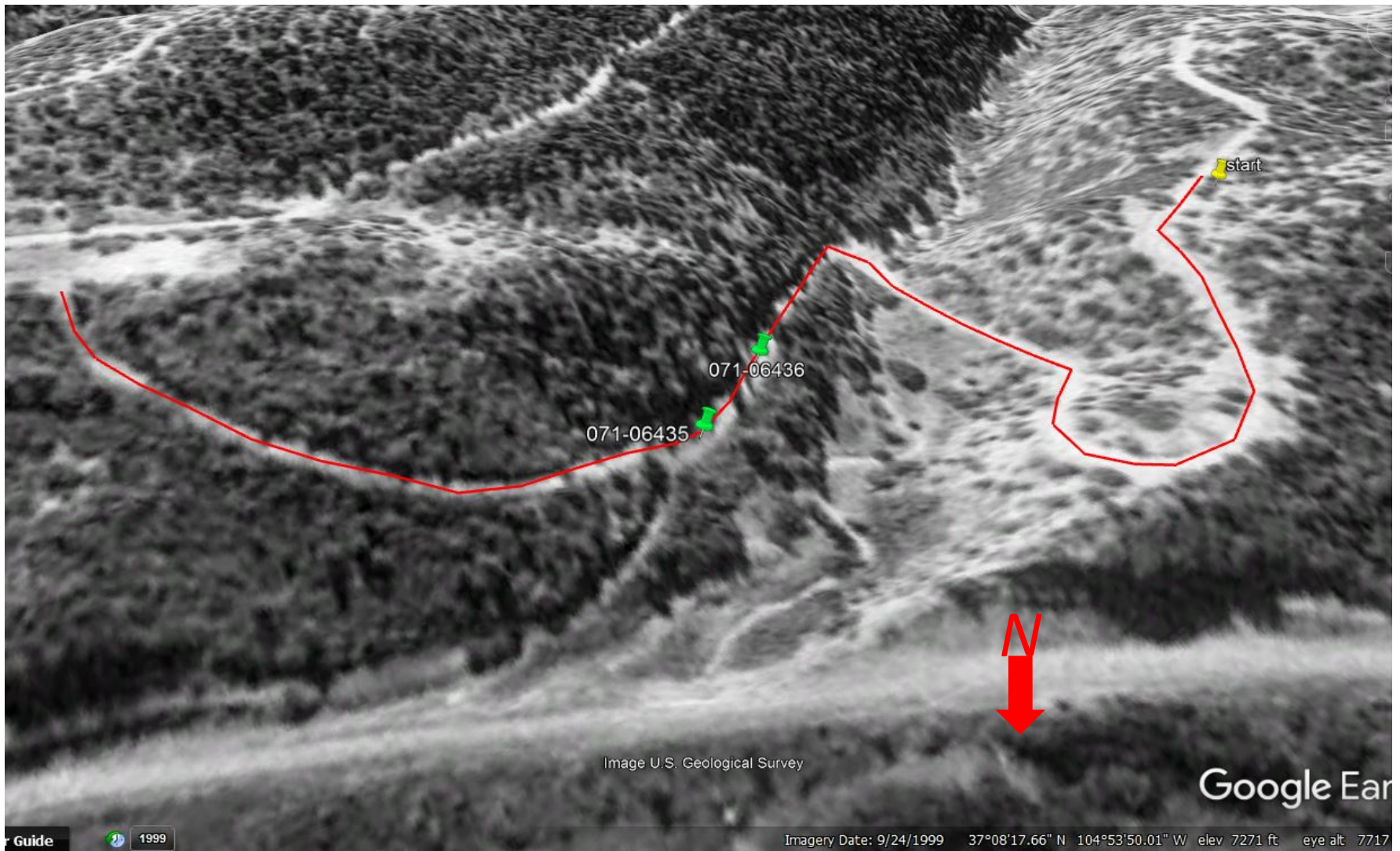


Photo#6:
Refer to Photo#5 description.



COLORADO
Oil & Gas Conservation
Commission
Department of Natural Resources

Inspection Photos: Timber Creek PA API#071-06436



Photo#7:

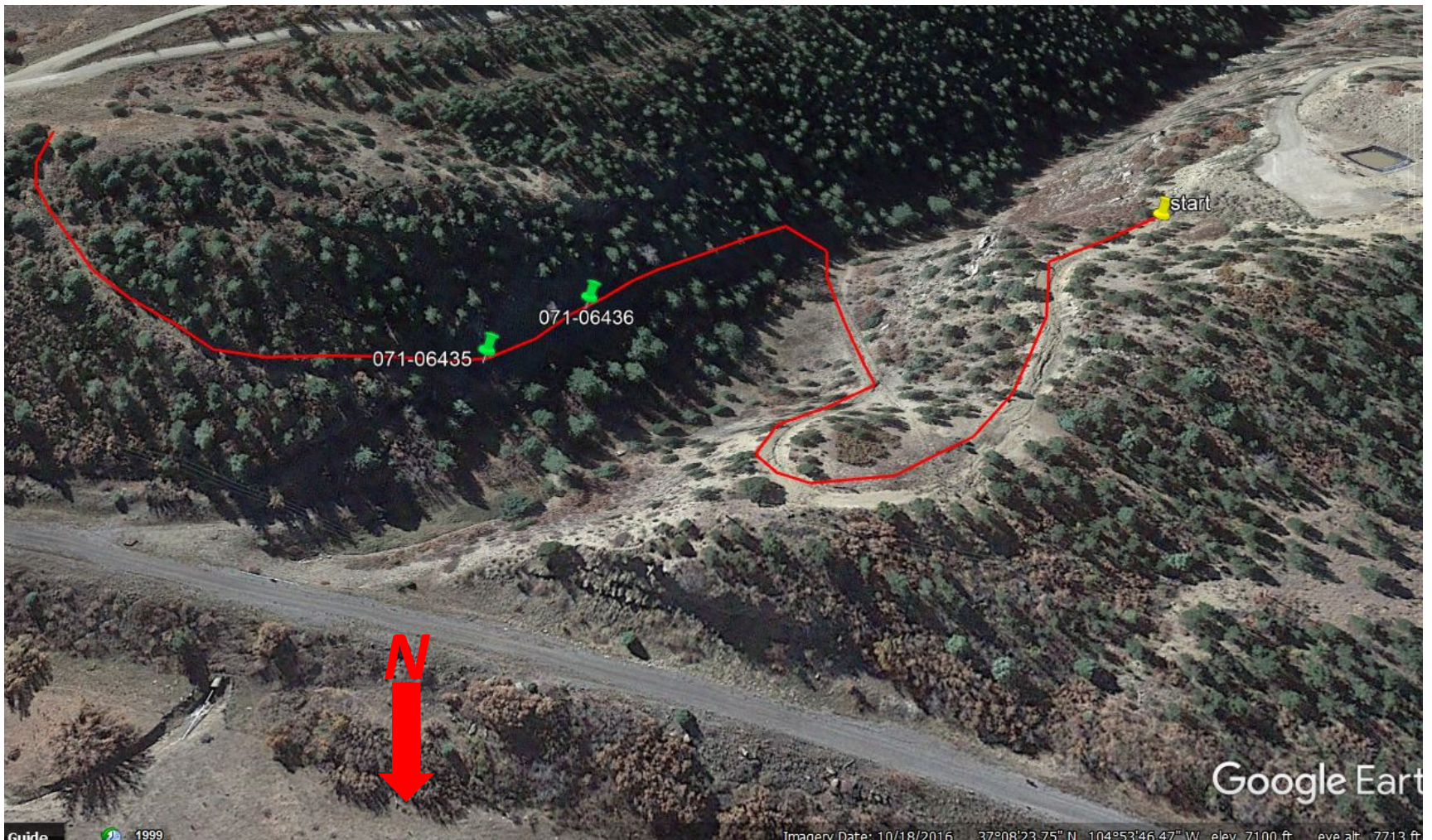
1999 Path of Access Rd; view From North to South for better visibility.

March 7, 2018



COLORADO
Oil & Gas Conservation
Commission
Department of Natural Resources

Inspection Photos: Timber Creek PA API#071-06436



Photo#8:

2016 Path of Access Rd; view From North to South for better visibility. Location was built at Start pin since 1999 Aerial, shortening Access Rd to be reclaimed.

March 7, 2018



COLORADO
Oil & Gas Conservation
Commission
Department of Natural Resources

Inspection Photos: Timber Creek PA API#071-06436