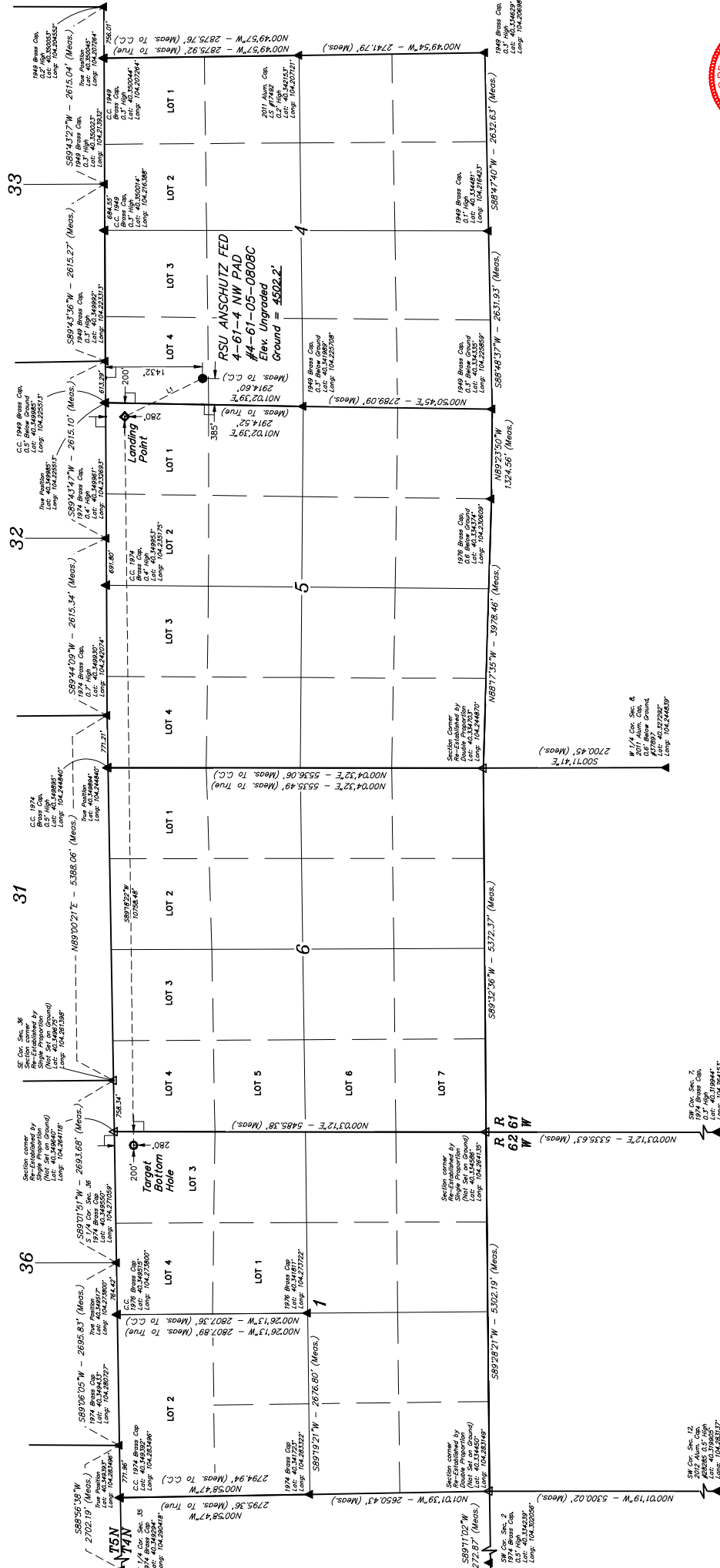
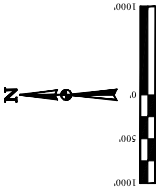


T4N, R61W, 6th P.M.

BILL BARRETT CORPORATION
RSU ANSCHUTZ FED #4-61-1 NW PAD
#4-61-05-0808C
NW 1/4 NW 1/4, SECTION 4, T4N, R61W, 6th P
WELD COUNTY, COLORADO

BASIS OF ELEVATION
SPOT ELEVATION LOCATED AT THE NORTHEAST CORNER OF SECTION 24, T2N, R62W, 6th PM. TAKEN FROM THE POINT OF ROCKS, QUADRANGLE, COLORADO, WELD COUNTY, 7.5 MINUTE QUAD (TOPOGRAPHIC MAP) PUBLISHED BY THE UNITED STATES DEPARTMENT OF THE INTERIOR, GEOLOGICAL SURVEY. SAID ELEVATION IS MARKED AS BEING 4530 FEET.

LINE TABLE		
LINE	DIRECTION	LENGTH
L1	N26°09'20"W	1279.93'







THIS IS TO CERTIFY THAT THE ABOVE
NOTES OF ACTUAL SURVEYS MADE
AND THAT THE SAME ARE TRUE AND
KNOWLEDGE AND BELIEF

PDOP = 1.3

[illegible]

LEGEND:

	= 90° SYM
	= PROPOSED
	= LANDING
	= TARGET
	= SECTION
	= SECTION



UELS, LLC

Corporate Office • 85 South 200 East
Vernal, UT 84078 • (435) 789-1017

DRAWN BY	ROBERT FISHER	SCALE
01/22/18	D.J.W.	1" = 1000'

WELL LOCATION PLAT