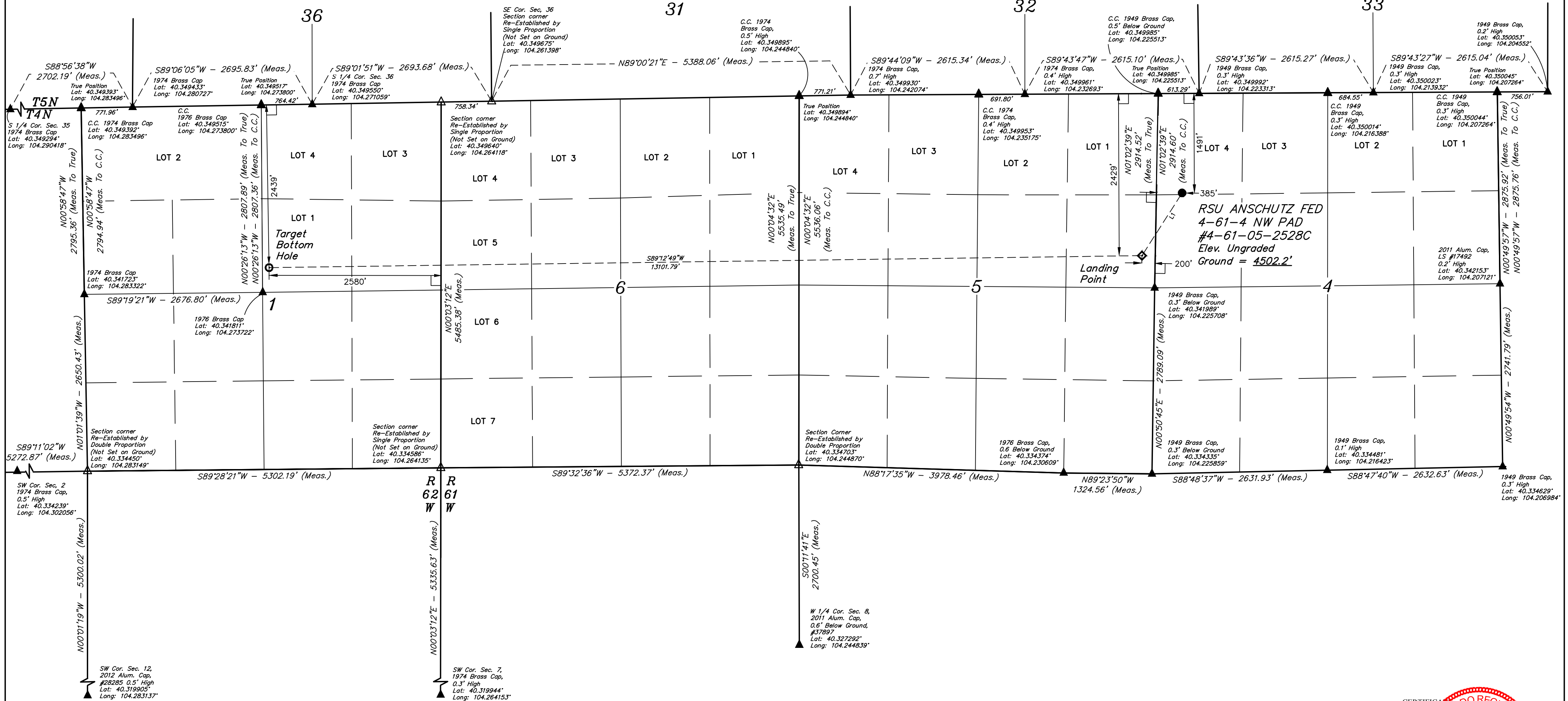


T4N, R61W, 6th P.M.

**BILL BARRETT CORPORATION**  
RSU ANSCHUTZ FED #4-61-4 NW PAD  
#4-61-05-2528C  
NW 1/4 NW 1/4, SECTION 4, T4N, R61W, 6th P.M.  
WELD COUNTY, COLORADO  
BASIS OF BEARINGS  
BASIS OF BEARINGS IS A G.P.S. OBSERVATION  
BASIS OF ELEVATION  
SPOT ELEVATION LOCATED AT THE NORTHEAST CORNER OF  
SECTION 24, T5N, R62W, 6th P.M. TAKEN FROM THE POINT  
OF ROCKS, QUADRANGLE, COLORADO, WELD COUNTY, 7.5  
MINUTE QUAD (TOPOGRAPHIC MAP) PUBLISHED BY THE UNITED  
STATES DEPARTMENT OF THE INTERIOR, GEOLOGICAL SURVEY.  
SAID ELEVATION IS MARKED AS BEING 4530 FEET.

LINE TABLE		
LINE	DIRECTION	LENGTH
L1	S32°38'21"W	1116.70'



**LEGEND:**  
— = 90° SYMBOL  
● = PROPOSED WELLHEAD.  
◇ = LANDING POINT  
○ = TARGET BOTTOM HOLE.  
▲ = SECTION CORNERS LOCATED. (NAD 83)  
△ = SECTION CORNERS RE-ESTABLISHED.  
(Not Set on Ground.) (NAD 83)

NAD 83 (SURFACE LOCATION)	NAD 83 (LANDING POINT)	NAD 83 (TARGET BOTTOM HOLE)
LATITUDE = 40°20'45.23" (40.345896) LONGITUDE = 104°13'27.23" (104.224231)	LATITUDE = 40°20'35.94" (40.343316) LONGITUDE = 104°13'35.01" (104.226393)	LATITUDE = 40°20'34.18" (40.342828) LONGITUDE = 104°16'24.16" (104.273379)
NAD 27 (SURFACE LOCATION)	NAD 27 (LANDING POINT)	NAD 27 (TARGET BOTTOM HOLE)
LATITUDE = 40°20'45.29" (40.345914) LONGITUDE = 104°13'25.41" (104.223725)	LATITUDE = 40°20'36.00" (40.343335) LONGITUDE = 104°13'33.19" (104.225887)	LATITUDE = 40°20'34.25" (40.342846) LONGITUDE = 104°16'22.34" (104.272873)
STATE PLANE NAD 83 (CO. NORTH)	STATE PLANE NAD 83 (CO. NORTH)	STATE PLANE NAD 83 (CO. NORTH)
N: 1371408.59 E: 3355586.14	N: 1370460.17 E: 3354997.20	N: 1370097.54 E: 3341903.85
STATE PLANE NAD 27 (CO. NORTH)	STATE PLANE NAD 27 (CO. NORTH)	STATE PLANE NAD 27 (CO. NORTH)
N: 371410.72 E: 2355736.47	N: 370462.33 E: 2355147.52	N: 370099.70 E: 2342053.98

CERTIFICATE OF SURVEY  
THIS IS TO CERTIFY THAT THE ABOVE DESCRIBED SURVEY AND  
NOTES OF ACTUAL SURVEYS MADE BY ME UNDER MY SIGNATURE  
AND THAT THE SAME ARE TRUE AND CORRECT TO THE BEST OF MY  
KNOWLEDGE AND BELIEF.  
REGISTERED LAND SURVEYOR  
REGISTRATION NO. 28285  
STATE OF COLORADO  
JULY 12, 2018

**UUEL, LLC**  
Corporate Office \* 85 South 200 East  
Vernal, UT 84078 \* (435) 789-1017

**SURVEYED BY** ROBERT FISHER  
**DRAWN BY** D.J.W.

06-15-17  
01-22-18  
SCALE  
1" = 1000'

**WELL LOCATION PLAT**

PDOP = 1.3