

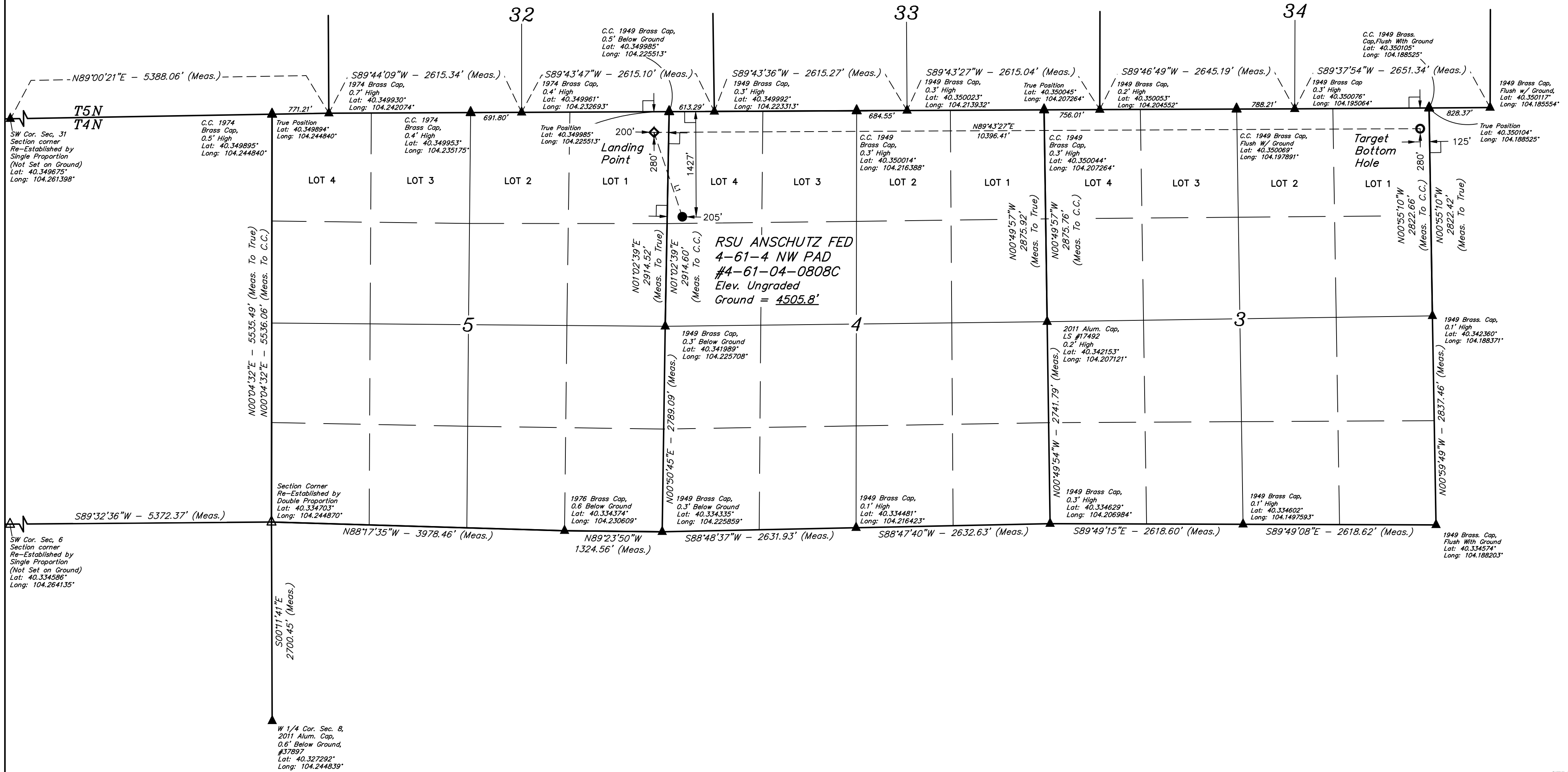
T4N, R61W, 6th P.M.

BILL BARRETT CORPORATION
RSU ANSCHUTZ FED #4-61-4 NW PAD
#4-61-04-0808C
NW 1/4 NW 1/4, SECTION 4, T4N, R61W, 6th P.M.
WELD COUNTY, COLORADO

BASIS OF BEARINGS
BASIS OF BEARINGS IS A G.P.S. OBSERVATION

BASIS OF ELEVATION
SPOT ELEVATION LOCATED AT THE NORTHEAST CORNER OF SECTION 24, T5N, R62W, 6th P.M. TAKEN FROM THE POINT OF ROCKS, QUADRANGLE, COLORADO, WELD COUNTY, 7.5 MINUTE QUAD (TOPOGRAPHIC MAP) PUBLISHED BY THE UNITED STATES DEPARTMENT OF THE INTERIOR, GEOLOGICAL SURVEY. SAID ELEVATION IS MARKED AS BEING 4530 FEET.

LINE TABLE		
LINE	DIRECTION	LENGTH
L1	N18°32'30"W	1208.30'



LEGEND:

- = 90° SYMBOL
- = PROPOSED WELLHEAD.
- ◆ = LANDING POINT
- = TARGET BOTTOM HOLE.
- ▲ = SECTION CORNERS LOCATED. (NAD 83)
- △ = SECTION CORNERS RE-ESTABLISHED. (Not Set on Ground.) (NAD 83)

PDOP = 1.3

REV: 1 02-28-18 C.C. (REMOVED RANGE LABEL)

NAD 83 (SURFACE LOCATION)	NAD 83 (LANDING POINT)	NAD 83 (TARGET BOTTOM HOLE)
LATITUDE = 40°20'45.83\"	LATITUDE = 40°20'57.17\"	LATITUDE = 40°20'57.60\"
LONGITUDE = 104°13'29.54\"	LONGITUDE = 104°13'34.50\"	LONGITUDE = 104°11'20.25\"
NAD 27 (SURFACE LOCATION)	NAD 27 (LANDING POINT)	NAD 27 (TARGET BOTTOM HOLE)
LATITUDE = 40°20'45.92\"	LATITUDE = 40°20'57.24\"	LATITUDE = 40°20'57.67\"
LONGITUDE = 104°13'27.72\"	LONGITUDE = 104°13'32.68\"	LONGITUDE = 104°11'18.43\"
STATE PLANE NAD 83 (CO. NORTH)	STATE PLANE NAD 83 (CO. NORTH)	STATE PLANE NAD 83 (CO. NORTH)
N: 1371469.35 E: 3355406.45	N: 1372609.15 E: 3355006.36	N: 1372804.28 E: 3365398.22
STATE PLANE NAD 27 (CO. NORTH)	STATE PLANE NAD 27 (CO. NORTH)	STATE PLANE NAD 27 (CO. NORTH)
N: 371471.47 E: 2355556.77	N: 372611.25 E: 2355156.67	N: 372806.34 E: 2365548.80

UELTS, LLC
Corporate Office * 85 South 200 East
Vernal, UT 84078 * (435) 789-1017

UINTEAH
ENGINEERING & LAND SURVEYING

SURVEYED BY: ROBERT FISHER
DRAWN BY: D.J.W.

06-15-17
01-22-18
SCALE
1\" = 1000'

WELL LOCATION PLAT

CERTIFICATE OF RECORDING
THIS IS TO CERTIFY THAT THE ABOVE DESCRIBED SURVEY WAS MADE IN ACCORDANCE WITH THE REQUIREMENTS OF THE COLORADO SURVEYING AND MAPPING ACT, AND THAT THE SAME ARE TRUE AND CORRECT TO THE BEST OF MY KNOWLEDGE AND BELIEF.

REGISTERED LAND SURVEYOR
REGISTRATION NO. 28285
STATE OF COLORADO
JAN 28 2018