



INTEQ

RECEIVED
KerrMcGee
MAY - 7 07

COGCC

123-24336

KERR MCGEE



01837692

Location: COLORADO

Field: WELD COUNTY (KERR MCGEE)

Facility: SEC.24-T3N-R68W

Slot: Reynolds 32-24

Well: Reynolds 32-24

Wellbore: Reynolds 32-24 PWB

Plot reference wellpath is Reynolds 32-24 PWB

True vertical depths are referenced to Ensign 5 (RT)

Measured depths are referenced to Ensign 5 (RT)

Ensign 5 (RT) to Mean Sea Level: 4954 feet

Mean Sea Level to Mud line (Facility - SEC.24-T3N-R68W): 0 feet

Coordinates are in feet referenced to Slot

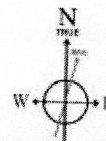
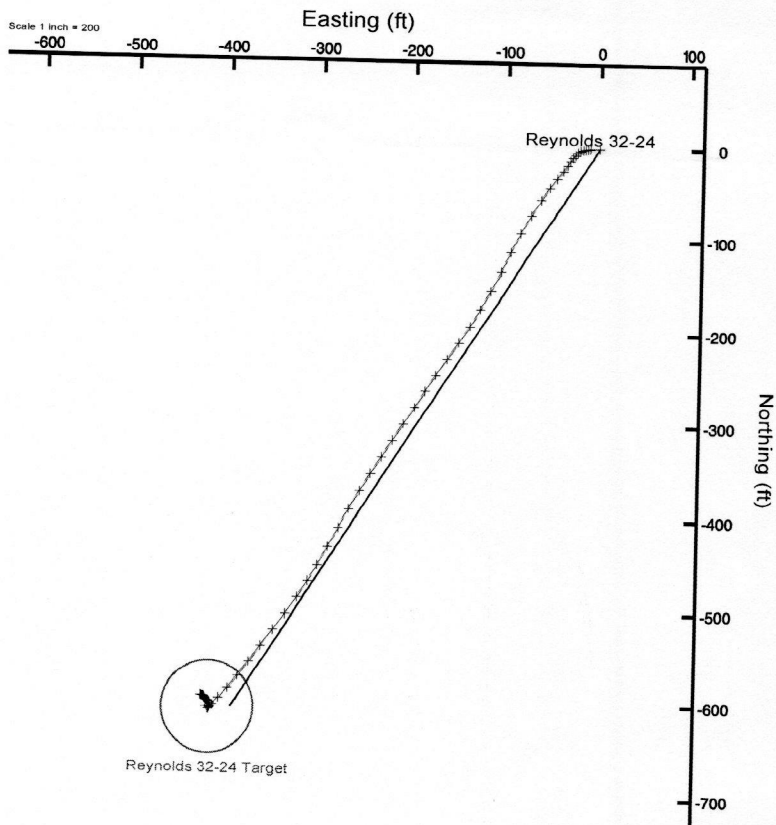
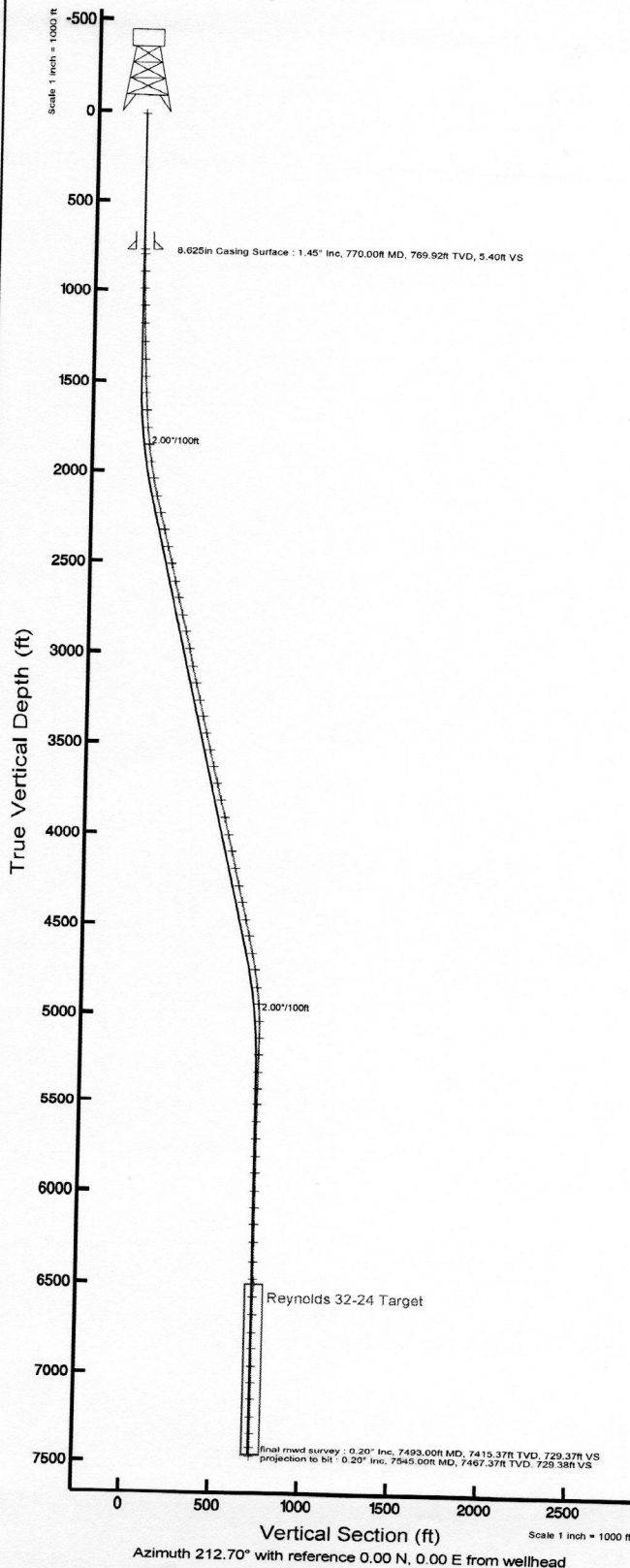
Grid System: NAD83 / Lambert Colorado State Planes, Northern Zone (501), US feet

North Reference: True north

Scale: True distance

Depths are in feet

Created by: Suzanne Thompson on 1/8/2007



BGGM (1945.0 to 2008.0) Dip: 67.06° Field: 53533.3 nT
Magnetic North is 9.57 degrees East of True North (at 11/26/06)

To correct azimuth from Magnetic to True add 9.57 degrees



KerrMcGee

123-24336

Actual Wellpath Report

Reynolds 32-24 AWP

Page 1 of 4

MAY -7 07

COGCC



INTEQ

REFERENCE WELLPATH IDENTIFICATION

Operator	KERR MCGEE	Slot	Reynolds 32-24
Area	COLORADO	Well	Reynolds 32-24
Field	WELD COUNTY (KERR MCGEE)	Wellbore	Reynolds 32-24 AWB
Facility	SEC.24-T3N-R68W		

REPORT SETUP INFORMATION

Projection System	NAD83 / Lambert Colorado State Planes, Northern Zone (501), US feet	Software System	WellArchitect™ 1.2
North Reference	True	User	Suzanne Thompson
Scale	0.999957	Report Generated	01/08/07 at 10:33:35
Wellbore last revised	01/08/07	Database/Source file	WA_Denver/Reynold:

WELLPATH LOCATION

	Local coordinates		Grid coordinates		Geographic coordinates	
	North [feet]	East [feet]	Easting [US feet]	Northing [US feet]	Latitude [°]	Longitude [°]
Slot Location	-648.25	-3181.13	3151049.99	1320847.80	40 12 46.296N	104 57 32.904W
Facility Reference Pt			3154226.88	1321515.82	40 12 52.704N	104 56 51.900W
Field Reference Pt			3197771.84	1268891.29	40 04 09.600N	104 47 36.000W

WELLPATH DATUM

Calculation method	Minimum curvature	Ensign 5 (RT) to Facility Vertical Datum	4954.00 feet
Horizontal Reference Pt	Slot	Ensign 5 (RT) to Mean Sea Level	4954.00 feet
Vertical Reference Pt	Ensign 5 (RT)	Facility Vertical Datum to Mud Line (Facility)	0.00 feet
MD Reference Pt	Ensign 5 (RT)	Section Origin	N 0.00, E 0.00 ft
Field Vertical Reference	Mean Sea Level	Section Azimuth	212.70°



KerrMcGee

Actual Wellpath Report

Reynolds 32-24 AWP
Page 2 of 4

RECEIVED

MAY -7 07

COGCC



BAKER
HUGHES

INTEQ

REFERENCE WELLPATH IDENTIFICATION

Operator	KERR MCGEE	Slot	Reynolds 32-24
Area	COLORADO	Well	Reynolds 32-24
Field	WELD COUNTY (KERR MCGEE)	Wellbore	Reynolds 32-24 AWP
Facility	SEC.24-T3N-R68W		

WELLPATH DATA (74 stations) † = interpolated/extrapolated station

MD [feet]	Inclination [°]	Azimuth [°]	TVD [feet]	Vert Sect [feet]	North [feet]	East [feet]	DLS [°/100ft]
0.00†	0.000	0.000	0.00	0.00	0.00	0.00	0.00
14.00	0.000	0.000	14.00	0.00	0.00	0.00	0.00
797.00	1.500	268.300	796.91	5.79	-0.30	-10.24	0.19
893.00	1.500	258.800	892.88	7.37	-0.59	-12.73	0.26
990.00	1.700	258.800	989.84	9.25	-1.11	-15.39	0.21
1087.00	1.700	252.200	1086.80	11.36	-1.83	-18.17	0.20
1183.00	1.900	248.000	1182.75	13.75	-2.86	-21.00	0.25
1279.00	2.100	230.000	1278.69	16.73	-4.59	-23.83	0.68
1374.00	2.200	223.000	1373.63	20.19	-7.04	-26.40	0.30
1471.00	2.300	224.000	1470.55	23.93	-9.80	-29.02	0.11
1565.00	3.000	211.000	1564.45	28.24	-13.27	-31.60	0.98
1662.00	4.100	210.000	1661.26	34.24	-18.45	-34.64	1.14
1758.00	5.200	219.800	1756.95	41.98	-24.76	-39.14	1.41
1854.00	7.000	218.400	1852.40	52.12	-32.69	-45.56	1.88
1950.00	8.600	214.900	1947.51	65.12	-43.16	-53.30	1.74
2046.00	10.500	213.800	2042.17	81.03	-56.32	-62.28	1.99
2143.00	13.200	210.300	2137.10	100.94	-73.23	-72.78	2.88
2238.00	14.400	207.900	2229.36	123.55	-93.03	-83.78	1.40
2334.00	13.500	205.400	2322.52	146.56	-113.71	-94.18	1.13
2431.00	13.800	205.700	2416.78	169.27	-134.36	-104.05	0.32
2527.00	14.100	210.700	2509.96	192.33	-154.73	-114.99	1.29
2622.00	13.600	208.200	2602.20	215.03	-174.52	-126.17	0.82
2719.00	12.800	211.700	2696.63	237.14	-193.72	-137.21	1.17
2815.00	12.900	214.200	2790.23	258.48	-211.63	-148.82	0.59
2910.00	13.500	214.900	2882.72	280.17	-229.49	-161.12	0.65
3007.00	12.100	213.500	2977.31	301.65	-247.26	-173.21	1.48
3103.00	12.600	211.000	3071.09	322.17	-264.62	-184.16	0.76
3199.00	12.600	212.800	3164.77	343.11	-282.40	-195.22	0.41
3295.00	13.500	213.800	3258.29	364.79	-300.51	-207.13	0.97
3391.00	12.300	212.800	3351.87	386.22	-318.42	-218.90	1.27
3487.00	13.300	212.100	3445.48	407.48	-336.37	-230.31	1.05
3582.00	12.800	212.800	3538.03	428.93	-354.47	-241.82	0.55
3678.00	13.500	211.400	3631.51	450.77	-372.98	-253.42	0.80
3773.00	14.100	210.000	3723.77	473.42	-392.46	-264.98	0.72
3869.00	13.500	207.900	3817.00	496.26	-412.49	-276.07	0.81
3966.00	14.700	208.900	3911.07	519.83	-433.28	-287.32	1.26
4062.00	12.600	208.900	4004.36	542.43	-453.11	-298.27	2.19
4157.00	12.500	212.100	4097.09	563.05	-470.89	-308.74	0.74
4254.00	12.500	213.800	4191.79	584.04	-488.51	-320.15	0.38
4350.00	12.900	217.300	4285.44	605.11	-505.66	-332.43	0.90



KerrMcGee

Actual Wellpath Report

Reynolds 32-24 AWP

Page 3 of 4

RECEIVED

MAY -7 07

COGCC



INTEQ

REFERENCE WELLPATH IDENTIFICATION

Operator	KERR MCGEE	Slot	Reynolds 32-24
Area	COLORADO	Well	Reynolds 32-24
Field	WELD COUNTY (KERR MCGEE)	Wellbore	Reynolds 32-24 AWP
Facility	SEC.24-T3N-R68W		

WELLPATH DATA (74 stations) † = interpolated/extrapolated station

MD [feet]	Inclination [°]	Azimuth [°]	TVD [feet]	Vert Sect [feet]	North [feet]	East [feet]	DLS [°/100ft]
4445.00	13.500	216.600	4377.93	626.74	-523.00	-345.47	0.65
4541.00	13.000	215.200	4471.38	648.71	-540.82	-358.37	0.62
4637.00	12.700	217.300	4564.97	670.02	-558.04	-370.99	0.58
4732.00	11.200	215.900	4657.91	689.64	-573.82	-382.73	1.61
4828.00	9.700	220.500	4752.32	706.96	-587.52	-393.45	1.79
4924.00	7.600	226.100	4847.22	721.15	-598.08	-403.28	2.35
5020.00	4.600	213.500	4942.67	731.18	-605.69	-409.98	3.40
5116.00	2.100	234.200	5038.50	736.67	-609.93	-413.53	2.85
5212.00	1.200	42.300	5134.49	737.31	-610.21	-414.28	3.42
5308.00	0.700	49.000	5230.47	735.76	-609.09	-413.16	0.53
5404.00	0.600	27.500	5326.47	734.69	-608.26	-412.49	0.27
5500.00	0.600	358.000	5422.46	733.78	-607.31	-412.27	0.32
5595.00	0.900	355.500	5517.45	732.78	-606.07	-412.35	0.32
5691.00	1.300	8.200	5613.44	731.19	-604.24	-412.25	0.49
5786.00	0.700	303.800	5708.42	730.19	-602.85	-412.58	1.24
5882.00	0.700	294.700	5804.42	730.26	-602.28	-413.60	0.12
5977.00	0.500	309.500	5899.41	730.30	-601.77	-414.45	0.26
6073.00	0.500	306.600	5995.41	730.22	-601.25	-415.11	0.03
6169.00	0.500	296.100	6091.40	730.24	-600.82	-415.82	0.10
6265.00	0.500	294.300	6187.40	730.35	-600.46	-416.58	0.02
6361.00	0.500	324.600	6283.40	730.25	-599.95	-417.20	0.27
6458.00	0.500	326.700	6380.39	729.92	-599.25	-417.68	0.02
6553.00	0.500	333.000	6475.39	729.54	-598.54	-418.09	0.06
6649.00	0.500	335.200	6571.39	729.11	-597.78	-418.46	0.02
6745.00	0.500	340.000	6667.38	728.63	-597.01	-418.78	0.04
6841.00	0.200	316.200	6763.38	728.33	-596.49	-419.04	0.34
6937.00	0.300	273.300	6859.38	728.42	-596.36	-419.41	0.21
7034.00	0.500	274.000	6956.38	728.75	-596.31	-420.08	0.21
7129.00	0.500	285.000	7051.37	729.07	-596.18	-420.89	0.10
7225.00	0.300	293.000	7147.37	729.24	-595.97	-421.53	0.22
7321.00	0.300	298.600	7243.37	729.30	-595.75	-421.98	0.03
7417.00	0.400	298.200	7339.37	729.35	-595.47	-422.50	0.10
7493.00	0.200	300.700	7415.37	729.37	-595.28	-422.85	0.26
7545.00†	0.200	300.700	7467.37	729.38	-595.19	-423.00	0.00

HOLE & CASING SECTIONS Ref Wellbore: Reynolds 32-24 AWP Ref Wellpath: Reynolds 32-24 AWP

String/Diameter	Start MD [feet]	End MD [feet]	Interval [feet]	Start TVD [feet]	End TVD [feet]	Start N/S [feet]	Start E/W [feet]	End N/S [feet]	End E/W [feet]
12.25in Open Hole	14.00	770.00	756.00	14.00	769.92	0.00	0.00	-0.28	-9.55
8.625in Casing Surface	14.00	770.00	756.00	14.00	769.92	0.00	0.00	-0.28	-9.55
7.78in Open Hole	770.00	7545.00	6775.00	769.92	7467.37	-0.28	-9.55	-595.19	-423.00



KerrMcGee

Actual Wellpath Report

Reynolds 32-24 AWP

Page 4 of 4

RECEIVED

MAY -7 07

COGCC



INTEQ

REFERENCE WELLPATH IDENTIFICATION

Operator	KERR MCGEE	Slot	Reynolds 32-24
Area	COLORADO	Well	Reynolds 32-24
Field	WELD COUNTY (KERR MCGEE)	Wellbore	Reynolds 32-24 AWB
Facility	SEC.24-T3N-R68W		

TARGETS

Name	MD [feet]	TVD [feet]	North [feet]	East [feet]	Grid East [us survey feet]	Grid North [us survey feet]	Latitude [°]	Longitude [°]	Shape
Existing Well Reynolds 5-24A		0.00	48.00	16.00	3151065.69	1320895.90	40 12 46.770N	104 57 32.698W	circle
Reynolds 32-24 Target		6500.00	-607.60	-415.00	3150638.72	1320237.71	40 12 40.292N	104 57 38.253W	circle

WELLPATH COMPOSITION Ref Wellbore: Reynolds 32-24 AWB Ref Wellpath: Reynolds 32-24 AWP

Start MD [feet]	End MD [feet]	Positional Uncertainty Model	Log Name/Comment	Wellbore
14.00	7493.00	NaviTrak (Standard)	BHI MWD <797-7545>	Reynolds 32-24 AWB
7493.00	7545.00	Blind Drilling (std)	Projection to bit	Reynolds 32-24 AWB

WELLPATH COMMENTS

MD [feet]	Inclination [degrees]	Azimuth [degrees]	TVD [feet]	Comment
7493.00	0.200	300.700	7415.37	final mwd survey
7545.00	0.200	300.700	7467.37	projection to bit