



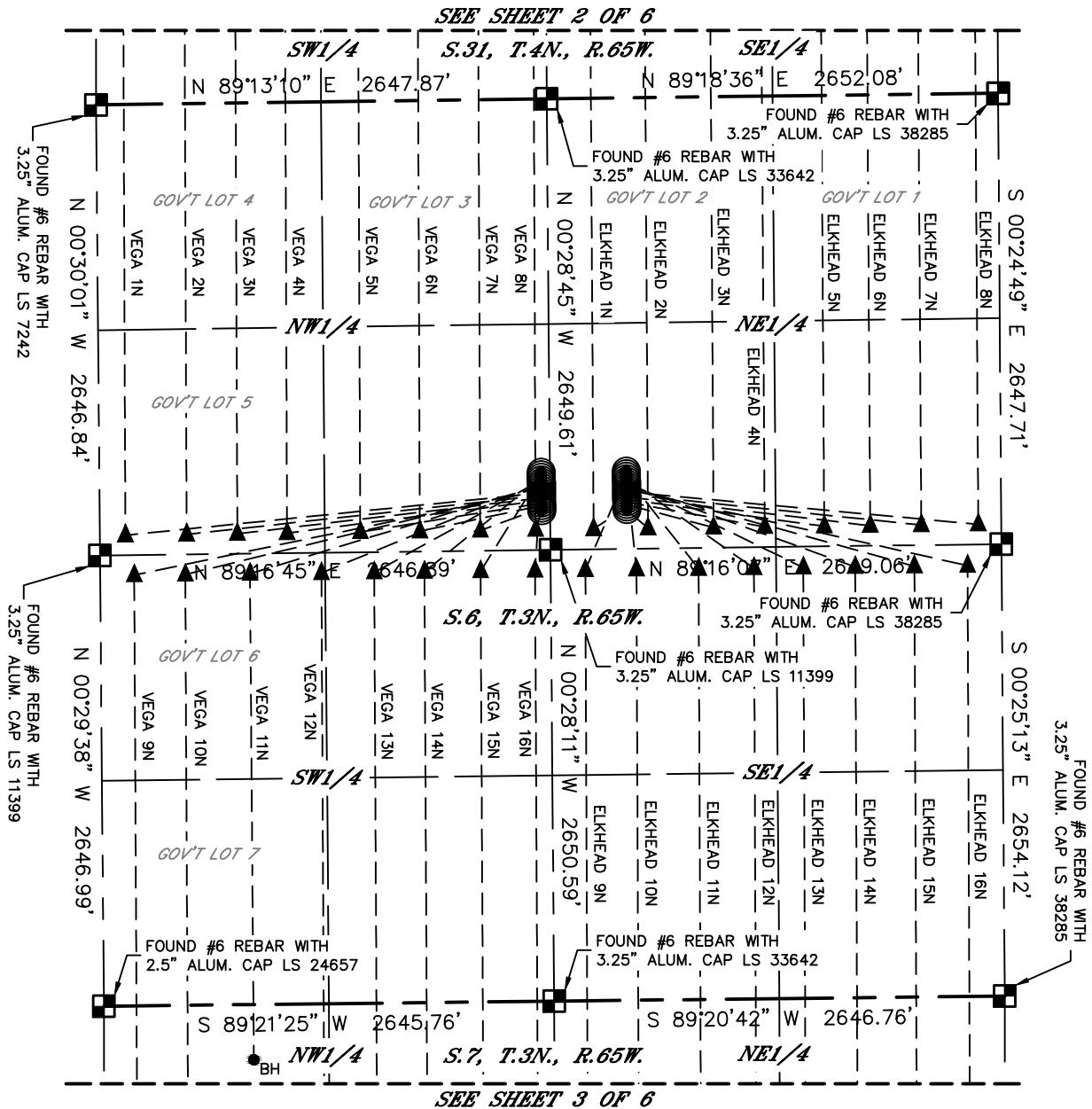
Lat40°, Inc. 6250 W. 10th Street, Unit 2, Greeley, CO 970-515-5294

MULTI-WELL PLAN

ELKHEAD-VEGA 3N65W6 1-32 PAD

THIS MAP DOES NOT REPRESENT A BOUNDARY SURVEY

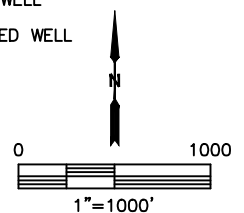
SECTION: 6
TOWNSHIP: 3N
RANGE: 65W
6TH. P.M.
WELD COUNTY, CO



SEE SHEET 4 OF 6 FOR BOTTOM HOLE INFORMATION.

LEGEND

- = ALIQUOT MONUMENT AS DESCRIBED
- = CALCULATED POSITION
- = SURFACE HOLE LOCATION (SHL)
- ▲ = ENTRY POINT LOCATION (EP)
- _{BH} = BOTTOM HOLE LOCATION (BHL)
- ⊙ = EXISTING WELL
- ⊙ = ABANDONED WELL



SHEET 1 OF 6

DATE: 2/13/2018
PROJECT#: 2017110



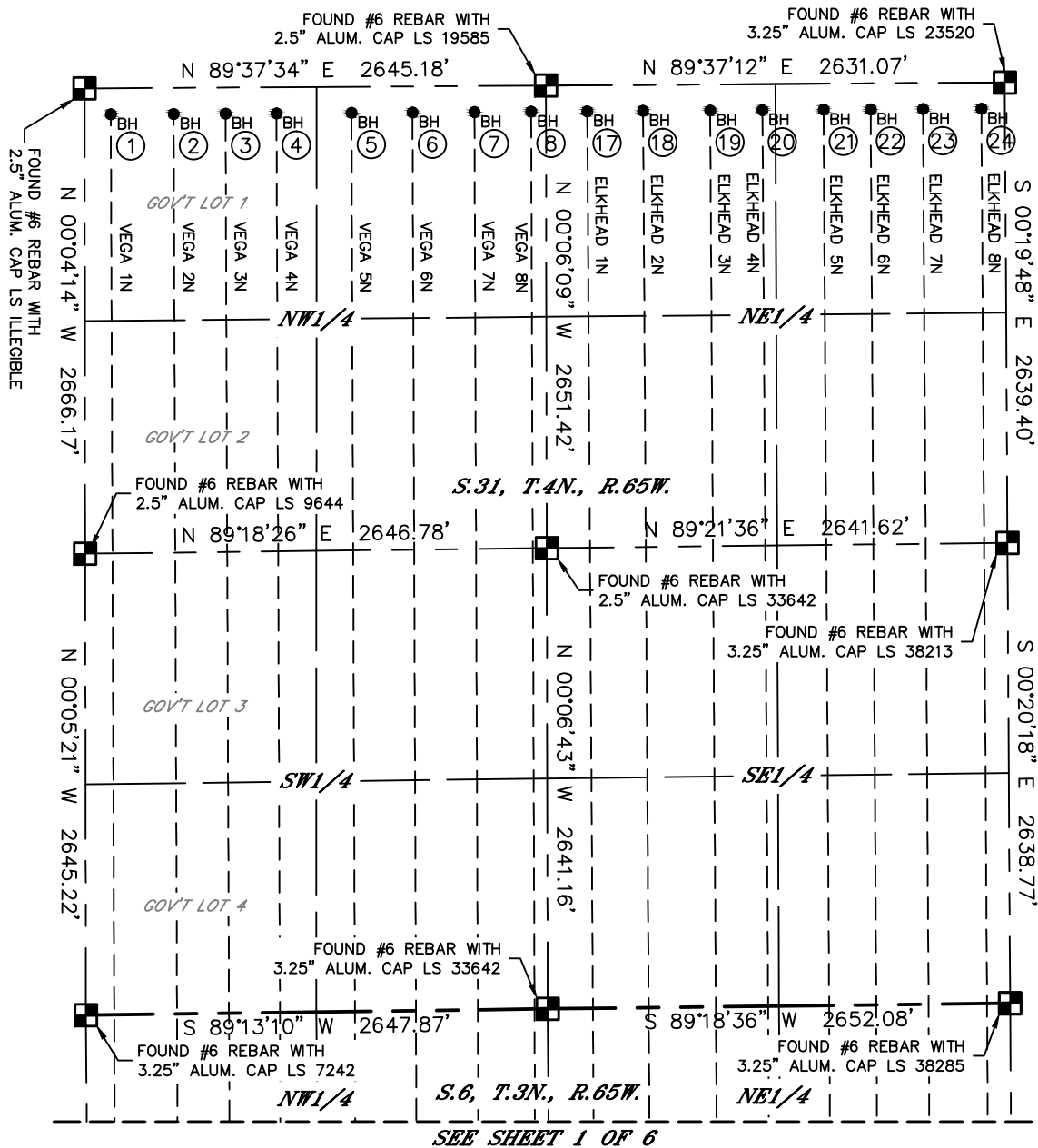
Lat40°, Inc. 6250 W. 10th Street, Unit 2, Greeley, CO 970-515-5294

MULTI-WELL PLAN

ELKHEAD-VEGA 3N65W6 1-32 PAD

THIS MAP DOES NOT REPRESENT A BOUNDARY SURVEY

SECTION: 6
TOWNSHIP: 3N
RANGE: 65W
6TH. P.M.
WELD COUNTY, CO

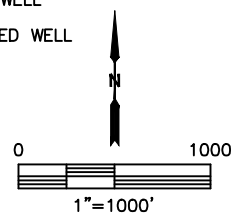


SEE SHEET 1 OF 6

SEE SHEET 4 OF 6 FOR BOTTOM HOLE INFORMATION.

LEGEND

- = ALIQUOT MONUMENT AS DESCRIBED
- = CALCULATED POSITION
- = SURFACE HOLE LOCATION (SHL)
- ▲ = ENTRY POINT LOCATION (EP)
- _{BH} = BOTTOM HOLE LOCATION (BHL)
- ⊙ = EXISTING WELL
- ⊙ = ABANDONED WELL



SHEET 2 OF 6

DATE: 2/13/2018
PROJECT#: 2017110



Lat40°, Inc. 6250 W. 10th Street, Unit 2, Greeley, CO 970-515-5294

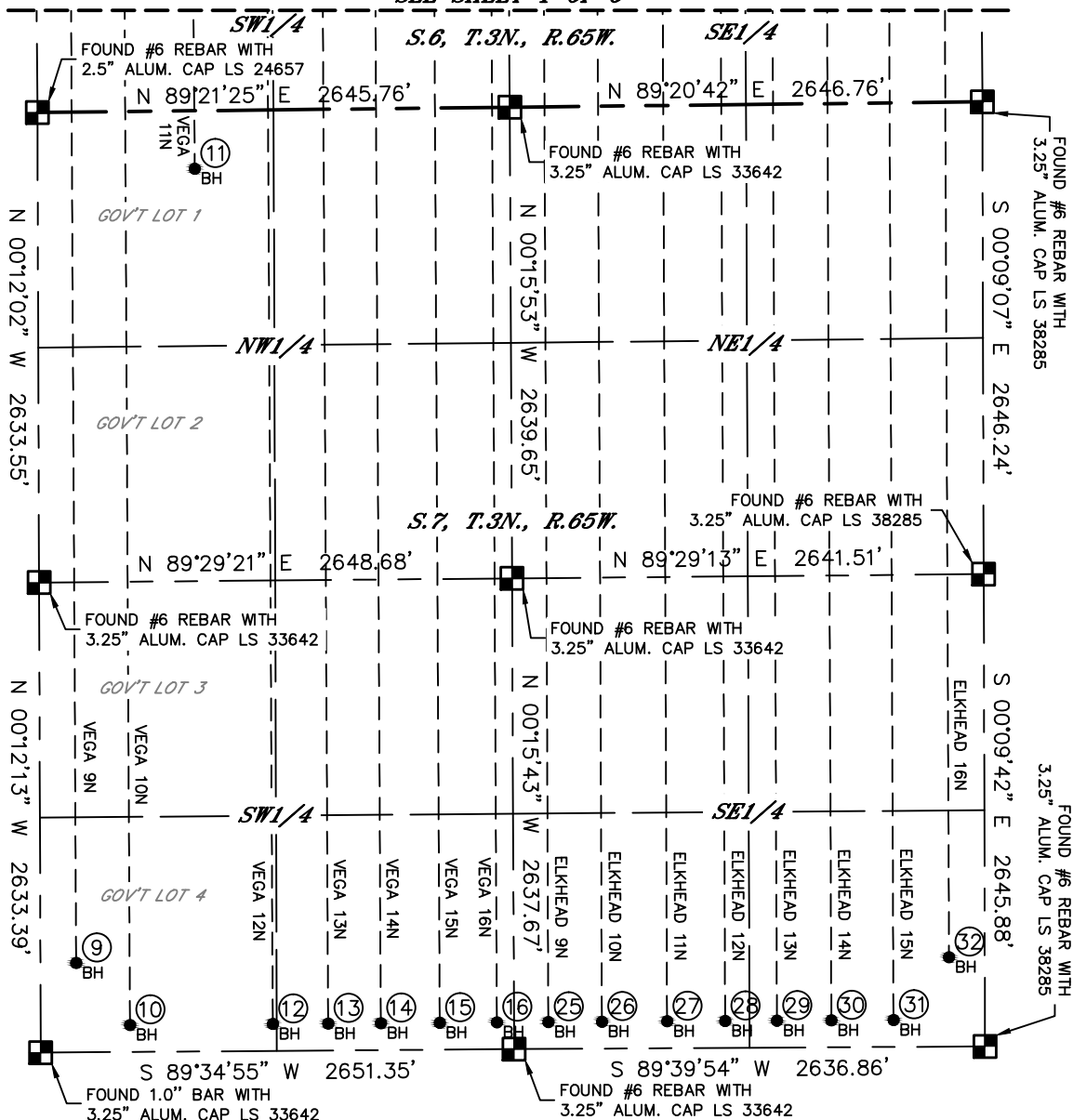
MULTI-WELL PLAN

ELKHEAD-VEGA 3N65W6 1-32 PAD

SECTION: 6
TOWNSHIP: 3N
RANGE: 65W
6TH. P.M.
WELD COUNTY, CO

THIS MAP DOES NOT REPRESENT A BOUNDARY SURVEY

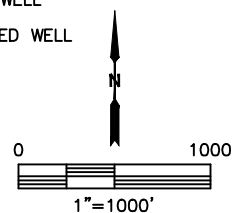
SEE SHEET 1 OF 6



SEE SHEET 4 OF 6 FOR BOTTOM HOLE INFORMATION.

LEGEND

- = ALIQUOT MONUMENT AS DESCRIBED
- = CALCULATED POSITION
- = SURFACE HOLE LOCATION (SHL)
- ▲ = ENTRY POINT LOCATION (EP)
- = BOTTOM HOLE LOCATION (BHL)
- ⊙ = EXISTING WELL
- ⊙ = ABANDONED WELL



SHEET 3 OF 6

DATE: 2/13/2018
PROJECT#: 2017110



Lat40°, Inc. 6250 W. 10th Street, Unit 2, Greeley, CO 970-515-5294

MULTI-WELL PLAN
ELKHEAD-VEGA 3N65W6 1-32 PAD

SECTION: 6
TOWNSHIP: 3N
RANGE: 65W
6TH. P.M.
WELD COUNTY, CO

#	WELL NAME	BHL FOOTAGE			BHL LAT °	BHL LONG °	BHL S-T-R
1	VEGA 1N	150	FNL	150	FWL	40.27580	-104.71498 31-4-65
2	VEGA 2N	150	FNL	510	FWL	40.27580	-104.71369 31-4-65
3	VEGA 3N	150	FNL	808	FWL	40.27580	-104.71262 31-4-65
4	VEGA 4N	150	FNL	1100	FWL	40.27580	-104.71158 31-4-65
5	VEGA 5N	150	FNL	1530	FWL	40.27580	-104.71003 31-4-65
6	VEGA 6N	150	FNL	1880	FWL	40.27579	-104.70878 31-4-65
7	VEGA 7N	150	FNL	2235	FWL	40.27579	-104.70751 31-4-65
8	VEGA 8N	150	FNL	2560	FWL	40.27579	-104.70634 31-4-65
9	VEGA 9N	500	FSL	200	FWL	40.23403	-104.71503 7-3-65
10	VEGA 10N	150	FSL	500	FWL	40.23307	-104.71396 7-3-65
11	VEGA 11N	325	FNL	880	FWL	40.24623	-104.71251 7-3-65
12	VEGA 12N	150	FSL	1300	FWL	40.23306	-104.71110 7-3-65
13	VEGA 13N	150	FSL	1610	FWL	40.23306	-104.70999 7-3-65
14	VEGA 14N	150	FSL	1905	FWL	40.23306	-104.70893 7-3-65
15	VEGA 15N	150	FSL	2235	FWL	40.23306	-104.70775 7-3-65
16	VEGA 16N	150	FSL	2555	FWL	40.23306	-104.70661 7-3-65
17	ELKHEAD 1N	150	FNL	2395	FEL	40.27579	-104.70519 31-4-65
18	ELKHEAD 2N	150	FNL	2075	FEL	40.27578	-104.70404 31-4-65
19	ELKHEAD 3N	150	FNL	1690	FEL	40.27578	-104.70266 31-4-65
20	ELKHEAD 4N	150	FNL	1390	FEL	40.27578	-104.70159 31-4-65
21	ELKHEAD 5N	150	FNL	1040	FEL	40.27578	-104.70034 31-4-65
22	ELKHEAD 6N	150	FNL	770	FEL	40.27578	-104.69937 31-4-65
23	ELKHEAD 7N	150	FNL	470	FEL	40.27577	-104.69829 31-4-65
24	ELKHEAD 8N	150	FNL	135	FEL	40.27577	-104.69709 31-4-65
25	ELKHEAD 9N	150	FSL	2445	FEL	40.23306	-104.70557 7-3-65
26	ELKHEAD 10N	150	FSL	2145	FEL	40.23305	-104.70450 7-3-65
27	ELKHEAD 11N	150	FSL	1780	FEL	40.23305	-104.70319 7-3-65
28	ELKHEAD 12N	150	FSL	1455	FEL	40.23305	-104.70203 7-3-65
29	ELKHEAD 13N	150	FSL	1165	FEL	40.23305	-104.70099 7-3-65
30	ELKHEAD 14N	150	FSL	860	FEL	40.23304	-104.69990 7-3-65
31	ELKHEAD 15N	150	FSL	512	FEL	40.23304	-104.69865 7-3-65
32	ELKHEAD 16N	500	FSL	200	FEL	40.23400	-104.69753 7-3-65

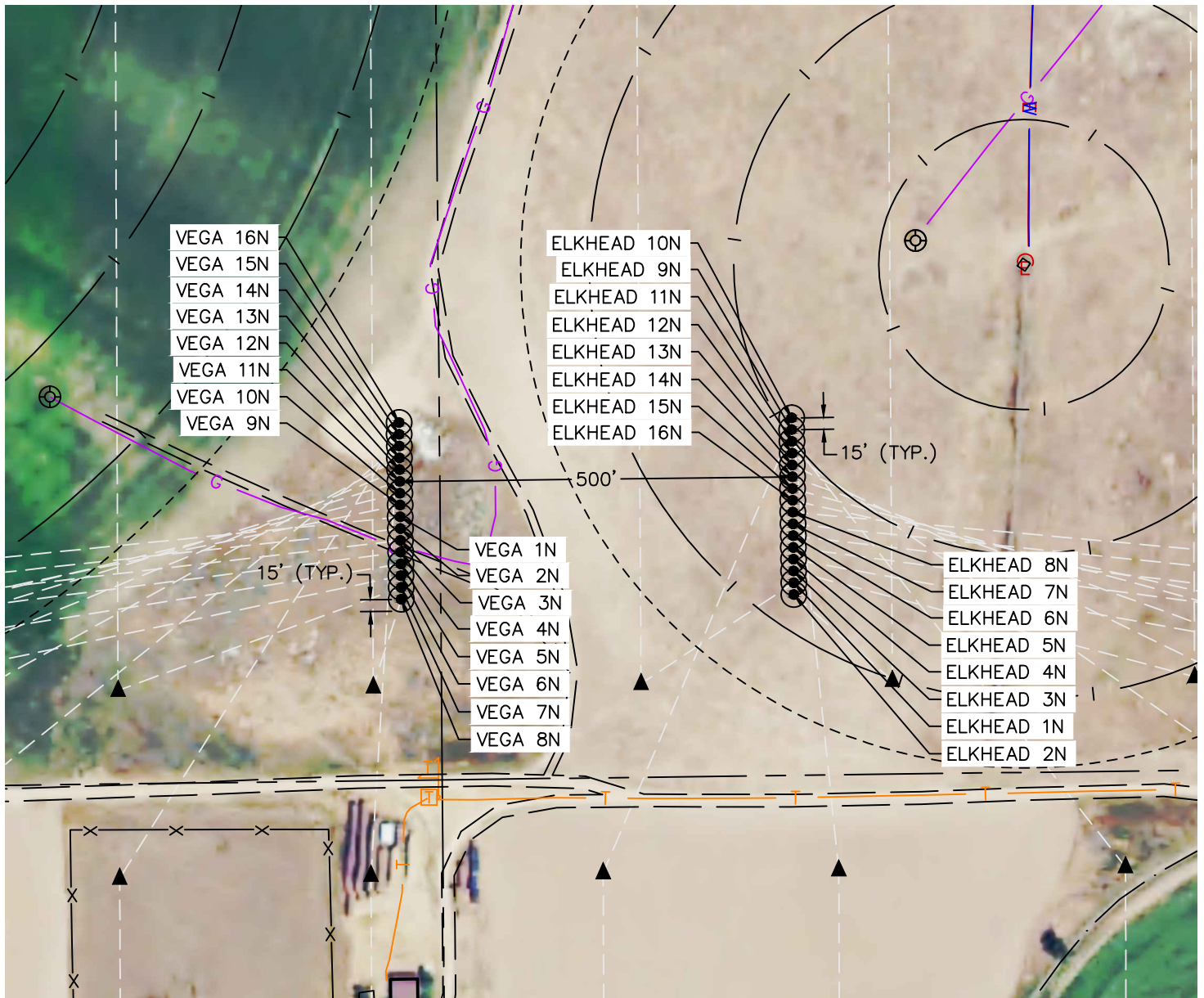


Lat40°, Inc. 6250 W. 10th Street, Unit 2, Greeley, CO 970-515-5294

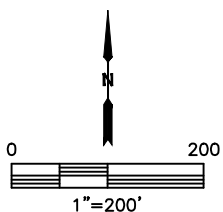
MULTI-WELL PLAN

ELKHEAD-VEGA 3N65W6 1-32 PAD

SECTION: 6
TOWNSHIP: 3N
RANGE: 65W
6TH. P.M.
WELD COUNTY, CO



SEE SHEET 6 OF 6 FOR SURFACE HOLE INFORMATION.





Lat40°, Inc. 6250 W. 10th Street, Unit 2, Greeley, CO 970-515-5294

MULTI-WELL PLAN

ELKHEAD-VEGA 3N65W6 1-32 PAD

SECTION: 6
TOWNSHIP: 3N
RANGE: 65W
6TH. P.M.
WELD COUNTY, CO

#	WELL NAME	SHL FOOTAGE			SHL LAT °	SHL LONG °	SHL PDOP	SHL ELEV (FT.)	SHL 1/4/1/4	SHL S-T-R	
1	VEGA 1N	2314	FNL	2596	FWL	40.25532	-104.70636	2.1	4976	SENW	6-3-65
2	VEGA 2N	2329	FNL	2596	FWL	40.25528	-104.70636	2.1	4976	SENW	6-3-65
3	VEGA 3N	2344	FNL	2596	FWL	40.25524	-104.70636	2.1	4977	SENW	6-3-65
4	VEGA 4N	2359	FNL	2596	FWL	40.25520	-104.70636	2.3	4977	SENW	6-3-65
5	VEGA 5N	2374	FNL	2596	FWL	40.25516	-104.70636	2.3	4976	SENW	6-3-65
6	VEGA 6N	2389	FNL	2596	FWL	40.25512	-104.70636	2.3	4976	SENW	6-3-65
7	VEGA 7N	2404	FNL	2596	FWL	40.25508	-104.70636	2.3	4976	SENW	6-3-65
8	VEGA 8N	2419	FNL	2596	FWL	40.25504	-104.70635	2.3	4975	SENW	6-3-65
9	VEGA 9N	2299	FNL	2596	FWL	40.25537	-104.70636	2.2	4975	SENW	6-3-65
10	VEGA 10N	2284	FNL	2596	FWL	40.25541	-104.70636	2.2	4974	SENW	6-3-65
11	VEGA 11N	2269	FNL	2596	FWL	40.25545	-104.70636	2.2	4974	SENW	6-3-65
12	VEGA 12N	2254	FNL	2596	FWL	40.25549	-104.70636	2.2	4967	SENW	6-3-65
13	VEGA 13N	2239	FNL	2596	FWL	40.25553	-104.70636	2.2	4962	SENW	6-3-65
14	VEGA 14N	2224	FNL	2596	FWL	40.25557	-104.70636	2.2	4963	SENW	6-3-65
15	VEGA 15N	2209	FNL	2596	FWL	40.25561	-104.70636	1.7	4964	SENW	6-3-65
16	VEGA 16N	2194	FNL	2596	FWL	40.25565	-104.70636	1.8	4964	SENW	6-3-65
17	ELKHEAD 1N	2404	FNL	2200	FEL	40.25508	-104.70456	2.1	4967	SWNE	6-3-65
18	ELKHEAD 2N	2419	FNL	2200	FEL	40.25504	-104.70456	2.1	4967	SWNE	6-3-65
19	ELKHEAD 3N	2389	FNL	2200	FEL	40.25512	-104.70456	2.1	4968	SWNE	6-3-65
20	ELKHEAD 4N	2374	FNL	2200	FEL	40.25516	-104.70456	2.1	4967	SWNE	6-3-65
21	ELKHEAD 5N	2359	FNL	2200	FEL	40.25520	-104.70456	2.1	4967	SWNE	6-3-65
22	ELKHEAD 6N	2344	FNL	2200	FEL	40.25525	-104.70456	2.1	4968	SWNE	6-3-65
23	ELKHEAD 7N	2329	FNL	2200	FEL	40.25529	-104.70457	2.1	4965	SWNE	6-3-65
24	ELKHEAD 8N	2314	FNL	2200	FEL	40.25533	-104.70457	2.1	4965	SWNE	6-3-65
25	ELKHEAD 9N	2209	FNL	2201	FEL	40.25562	-104.70457	2.0	4966	SWNE	6-3-65
26	ELKHEAD 10N	2194	FNL	2201	FEL	40.25566	-104.70457	1.6	4965	SWNE	6-3-65
27	ELKHEAD 11N	2224	FNL	2201	FEL	40.25557	-104.70457	2.0	4966	SWNE	6-3-65
28	ELKHEAD 12N	2239	FNL	2201	FEL	40.25553	-104.70457	2.0	4966	SWNE	6-3-65
29	ELKHEAD 13N	2254	FNL	2201	FEL	40.25549	-104.70457	2.0	4966	SWNE	6-3-65
30	ELKHEAD 14N	2269	FNL	2201	FEL	40.25545	-104.70457	2.0	4965	SWNE	6-3-65
31	ELKHEAD 15N	2284	FNL	2200	FEL	40.25541	-104.70457	2.1	4965	SWNE	6-3-65
32	ELKHEAD 16N	2299	FNL	2200	FEL	40.25537	-104.70457	2.1	4965	SWNE	6-3-65