

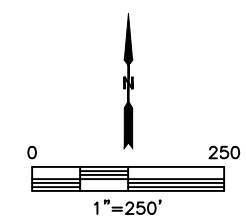
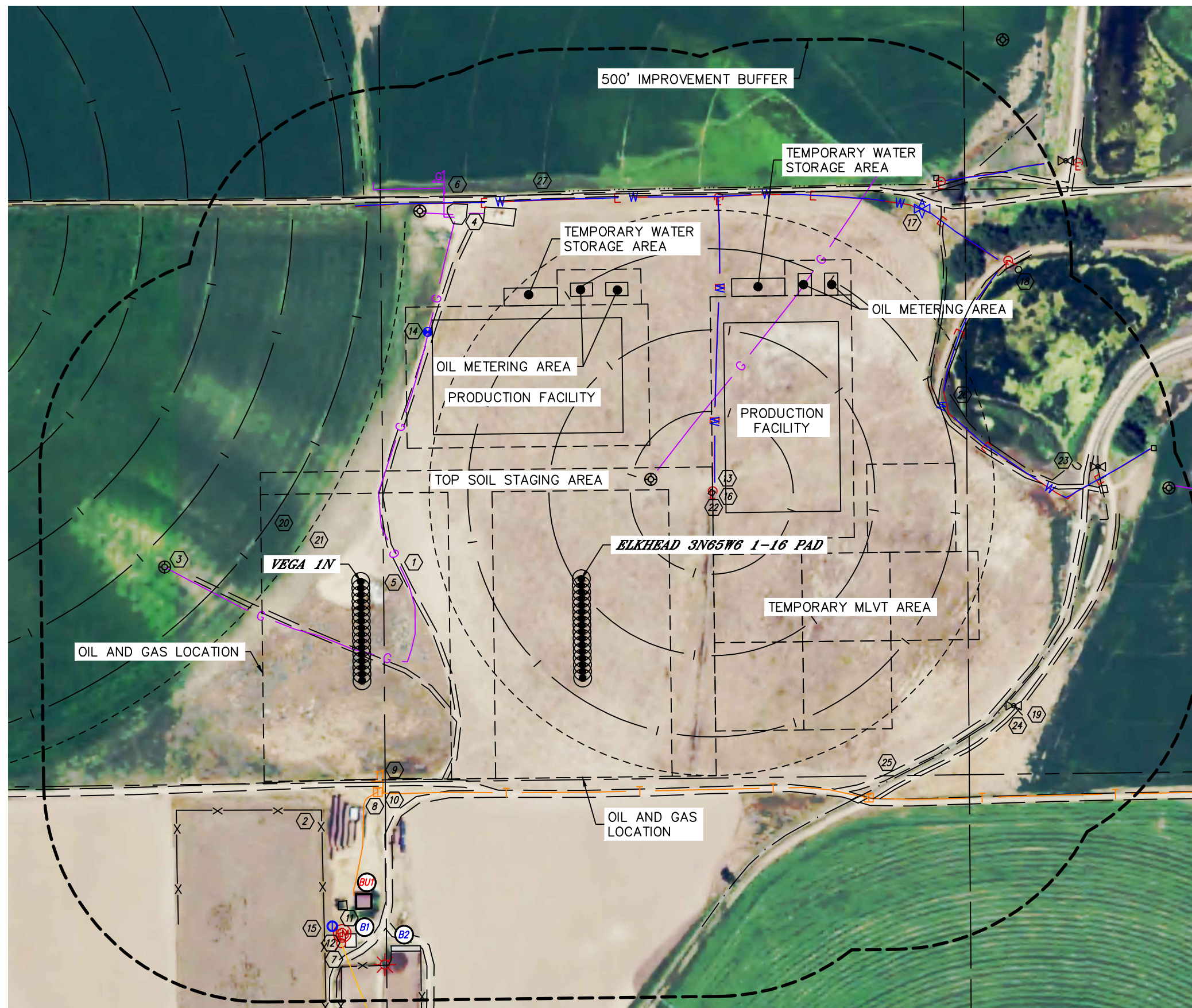


Lat40°, Inc. 6250 W. 10th Street, Unit 2, Greeley, CO 970-515-5294

LOCATION DRAWING

ELKHEAD-VEGA 3N65W6 1-32 PAD

SECTION: 6
TOWNSHIP: 3N
RANGE: 65W
6TH. P.M.
WELD COUNTY, CO





Lat40°, Inc. 6250 W. 10th Street, Unit 2, Greeley, CO 970-515-5294

LOCATION DRAWING

ELKHEAD-VEGA 3N65W6 1-32 PAD

SECTION: 6
TOWNSHIP: 3N
RANGE: 65W
6TH. P.M.
WELD COUNTY, CO

IMPROVEMENTS:
(MEASURED FROM THE PROPOSED VEGA 1N WELL LOCATION)

-  BUILDING UNIT BU1 708' S
-  BUILDING B1 798' S, B2 829' SE
-  ROAD 89' NE, 144' SW, 448' & 776' S, 503', 1173' & 1262' SE, 856' N, 1363', 1379' & 1536' NE
-  FENCE 525' SW, 724' S, 842' SE
-  EXISTING WELL HEAD 445' NW (P&A), 697', 850' & 1845' NE
-  EXISTING PRODUCTION EQUIPMENT 838' & 860' NE (KM/ANADARKO)
-  GAS LINE LOCATES ±95', ±719', ±847' & ±1855' NE, ±888' N (KM/ANADARKO)
-  GAS MARKER 902' NE
-  OVERHEAD UTILITY LINE 822' SW
-  TELEPHONE PEDESTAL 478' & 1251' SE
-  TELEPHONE MARKER 479' SE
-  TELEPHONE LINE LOCATES ±480' SE
-  ELECTRIC METER 798' SW
-  ELECTRIC SERVICE 797' SW, 824', 1190', 1597' & 1636' NE
-  ELECTRIC LINE LOCATES ±833', ±1386' & ±1609' NE, ±850' N
-  MONITORING WELL 586' NE
-  WATER WELL 784' SW
-  WATER LINE LOCATES ±833', ±1386' & ±1609' NE, ±850' N
-  AIR VALVE 1528' NE
-  IRRIGATION PUMP 1650' NE
-  IRRIGATION GATE VALVE 1507' SE, 1691' NE
-  IRRIGATION PIVOT TRACK 247', 416', 585', 755', 878' & 899' NW, 268', 451' & 636' NE
-  IRRIGATION END GUN 160' NW, 180' NE, 878' N
-  CENTER IRRIGATION PIVOT 812', 1586' & 1817' NE
-  CONCRETE STRUCTURE 1643' NE
-  PIPE 1507' SE, 1584', 1598' & 1685' NE
-  SPEER CANAL 1087' SE
- POND 1400' NE
- DITCH 970' & 1691' NE