

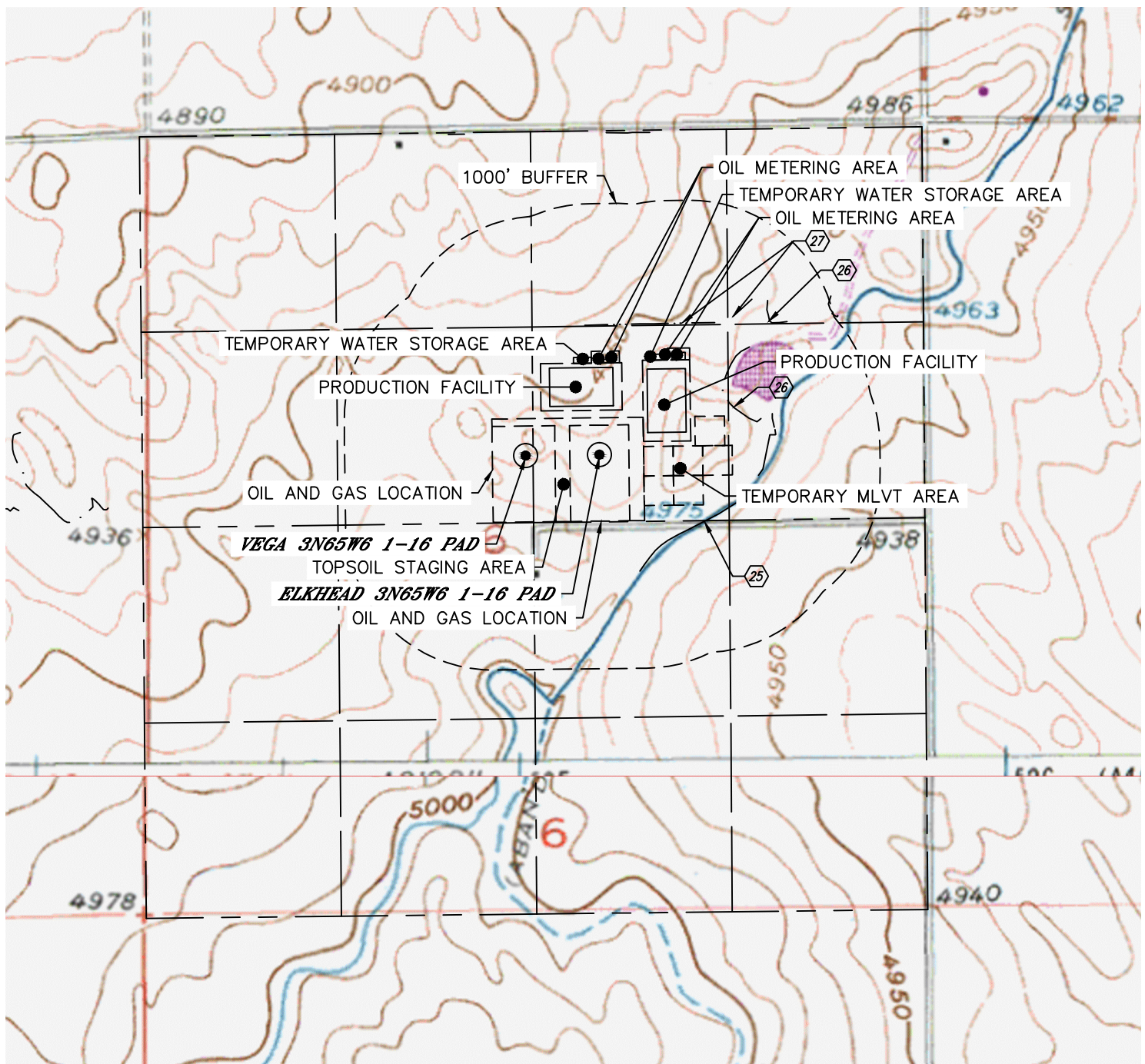


Lat40°, Inc. 6250 W. 10th Street, Unit 2, Greeley, CO 970-515-5294

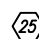
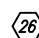
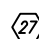
HYDROLOGY MAP

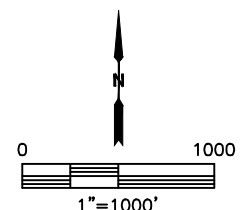
ELKHEAD-VEGA 3N65W6 1-32 PAD

SECTION: 6
TOWNSHIP: 3N
RANGE: 65W
6TH. P.M.
WELD COUNTY, CO



DISTANCES MEASURED FROM THE EDGE OF THE OIL AND GAS LOCATION.

-  SPEER CANAL 124' SE
-  POND 86' NE, 618' NE
-  DITCH 168' N, 404' NE



NEAREST DOWN GRADIENT SURFACE WATER: POND 86' NE

DATE: 2/1/2018
PROJECT#: 2017110