



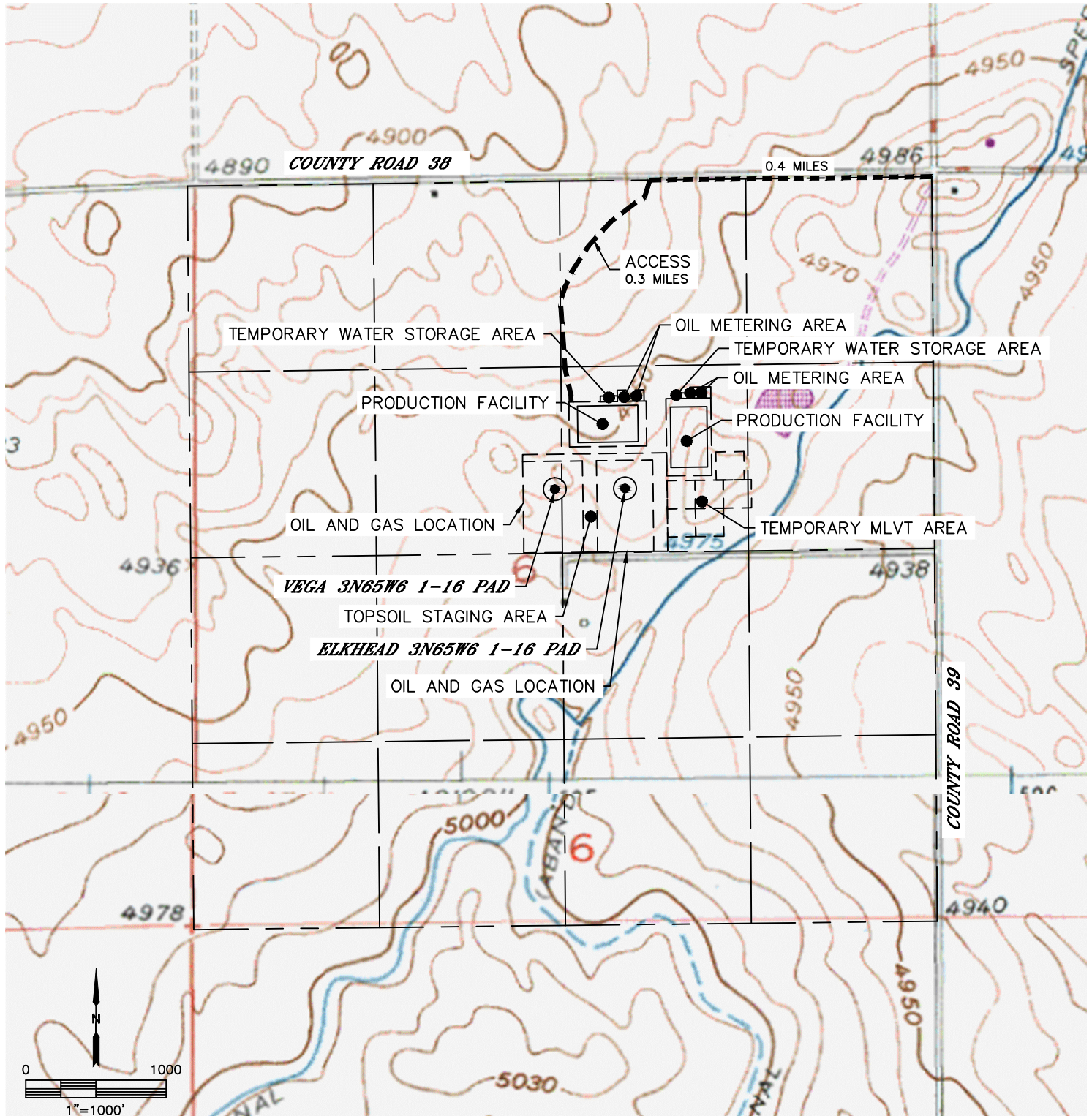
Lat40°, Inc. 6250 W. 10th Street, Unit 2, Greeley, CO 970-515-5294

ACCESS ROAD MAP

ELKHEAD-VEGA 3N65W6 1-32 PAD

SECTION: 6
TOWNSHIP: 3N
RANGE: 65W
6TH. P.M.
WELD COUNTY, CO

DRIVING DIRECTIONS TO VEGA 3N65W6 1-16 PAD & ELKHEAD 3N65W6 1-16 PAD
FROM THE INTERSECTION OF COUNTY ROAD 39 AND COUNTY ROAD 38 GO WEST ON COUNTY ROAD 38 FOR
0.4 MILES TO AN EXISTING ACCESS TO THE SOUTH. THENCE SOUTH AND WEST FOR 0.3 MILES TO THE
PROPOSED DRILL PADS AND PRODUCTION FACILITIES.





Lat40°, Inc. 6250 W. 10th Street, Unit 2, Greeley, CO 970-515-5294

ACCESS ROAD MAP

ELKHEAD-VEGA 3N65W6 1-32 PAD

SECTION: 6
TOWNSHIP: 3N
RANGE: 65W
6TH. P.M.
WELD COUNTY, CO

