

SCALE: 1" = 1000'

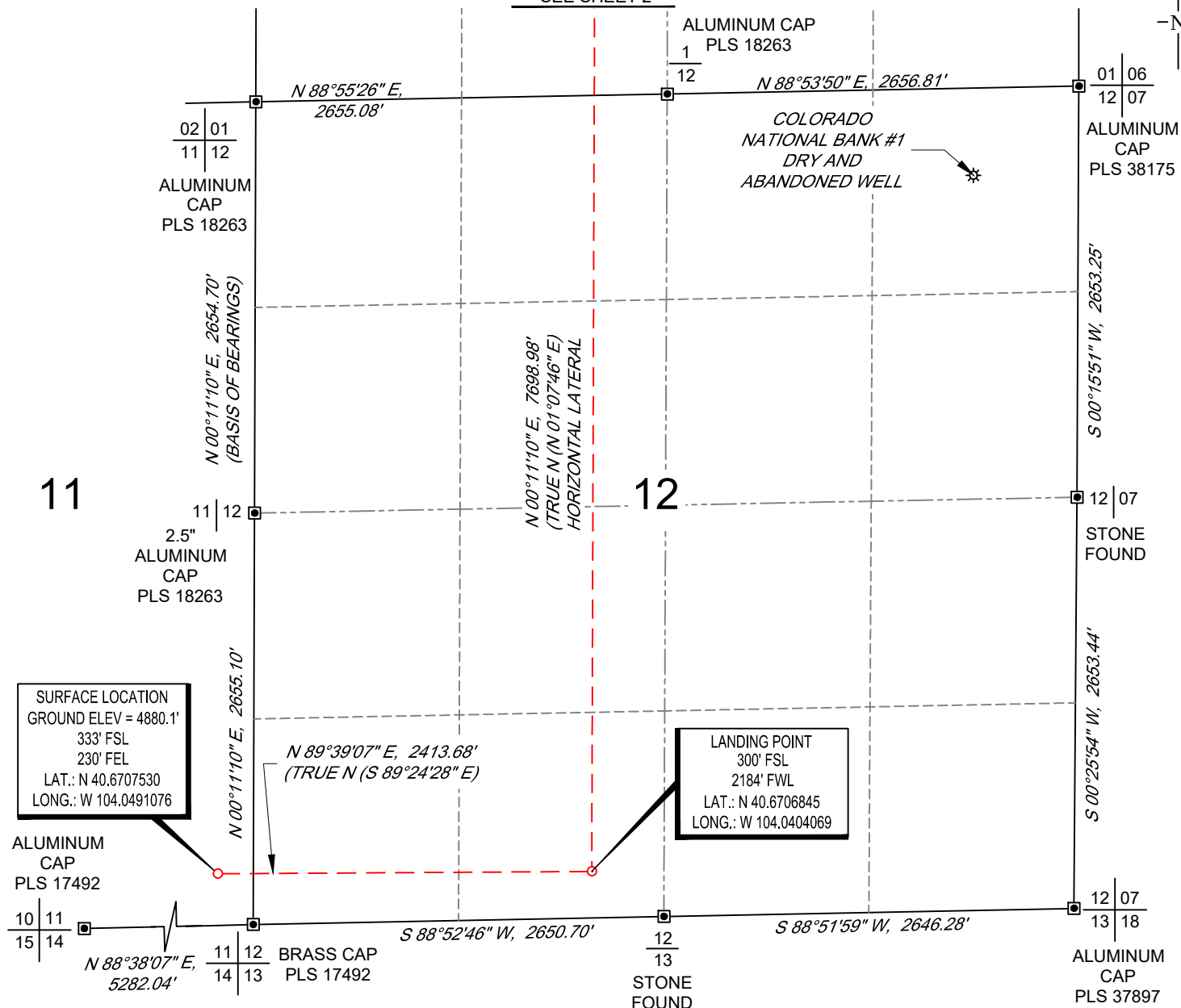
0' 500' 1000'

WELL LOCATION MAP

SHL SE/4 SE/4, SECTION 11, TOWNSHIP 8-N, RANGE 60-W
LP SE/4 SW/4, SECTION 12, TOWNSHIP 8-N, RANGE 60-W
BHL SE/4 NW/4, SECTION 1, TOWNSHIP 8-N, RANGE 60-W
WELD COUNTY, COLORADO



MATCH LINE
SEE SHEET 2



NOTES

1. Horizontal (NAD 83) and vertical (NAVD 88) datum is based on the Trimble VRS Network or OPUS Solution.
2. All directions, distances, and dimensions shown hereon are based on coordinates from the "Colorado coordinate system of 1983 north zone" (article 52 of title 38, C.R.S.).
3. All section line dimensions shown hereon are based on field measurements of existing monuments and/or physical evidence found in the field unless otherwise indicated.
4. Physical features shown hereon are for graphical representation only.
5. See Form 2A, if applicable for visible improvements within 500' of wellhead.
6. Distances to nearest section lines are measured perpendicularly.
7. This is not a land survey nor land survey plat.

PDOP Reading: 1.5 Instrument Operator: Joe DiGregorio Date Surveyed: 02/24/2018



SURVEYOR'S STATEMENT

The undersigned hereby states that the well location shown hereon was staked on the ground based on existing monumentation and/or physical evidence found in the field and is correct to the best of my knowledge, information and belief.



VERDAD RESOURCES
SONIC STAR 1101-07H

MML	03/01/2018	REVISION:	
SHEET :	1 OF 2	INT	DATE
FILE:LO_SONIC_STAR_1101_07H			

SCALE: 1" = 1000'

0' 500' 1000'

BOTTOM HOLE MAP

SHL SE/4 SE/4, SECTION 11, TOWNSHIP 8-N, RANGE 60-W
 LP SE/4 SW/4, SECTION 12, TOWNSHIP 8-N, RANGE 60-W
 BHL SE/4 NW/4, SECTION 1, TOWNSHIP 8-N, RANGE 60-W
 WELD COUNTY, COLORADO



N

ALUMINUM
CAP
PLS 18263
36

36
1
ALUMINUM
CAP
PLS 25936

ALUMINUM
CAP
PLS 37897
36

31
1
N 89°49'56" E
517.79'

1
6
ALUMINUM
CAP
PLS 37897
6.63' NORTH
OF LINE

N 00°07'46" E, 2748.29'

WCR 98
N 88°31'50" E
2650.77'

N 88°31'50" E
2132.79'

S 00°00'39" W, 2768.43'

BOTTOM HOLE LOCATION
 2690' FSL
 2186' FWL
 LAT.: N 40.6918127
 LONG.: W 104.0398598

2
1
ALUMINUM
CAP
PLS 18263

1
6
ALUMINUM
CAP
PLS 25936

N 00°07'46" E, 2643.75'

N 00°11'10" E, 7698.98'
 (TRUE N (N 01°07'46" E)
 HORIZONTAL LATERAL

S 00°00'39" W, 2646.68'

ALUMINUM
CAP
PLS 18263
02
11

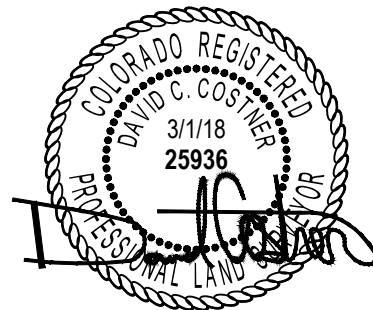
S 88°55'26" W,
2655.08'

S 88°53'50" W, 2656.81'

01
12

06
07
ALUMINUM
CAP
PLS 38175

MATCH LINE
SEE SHEET 1



VERDAD RESOURCES
SONIC STAR 1101-07H

MML 03/01/2018

REVISION:

SHEET : 2 OF 2

INT DATE

FILE:LO_SONIC_STAR_1101_07H

