

SCALE: 1" = 1000'

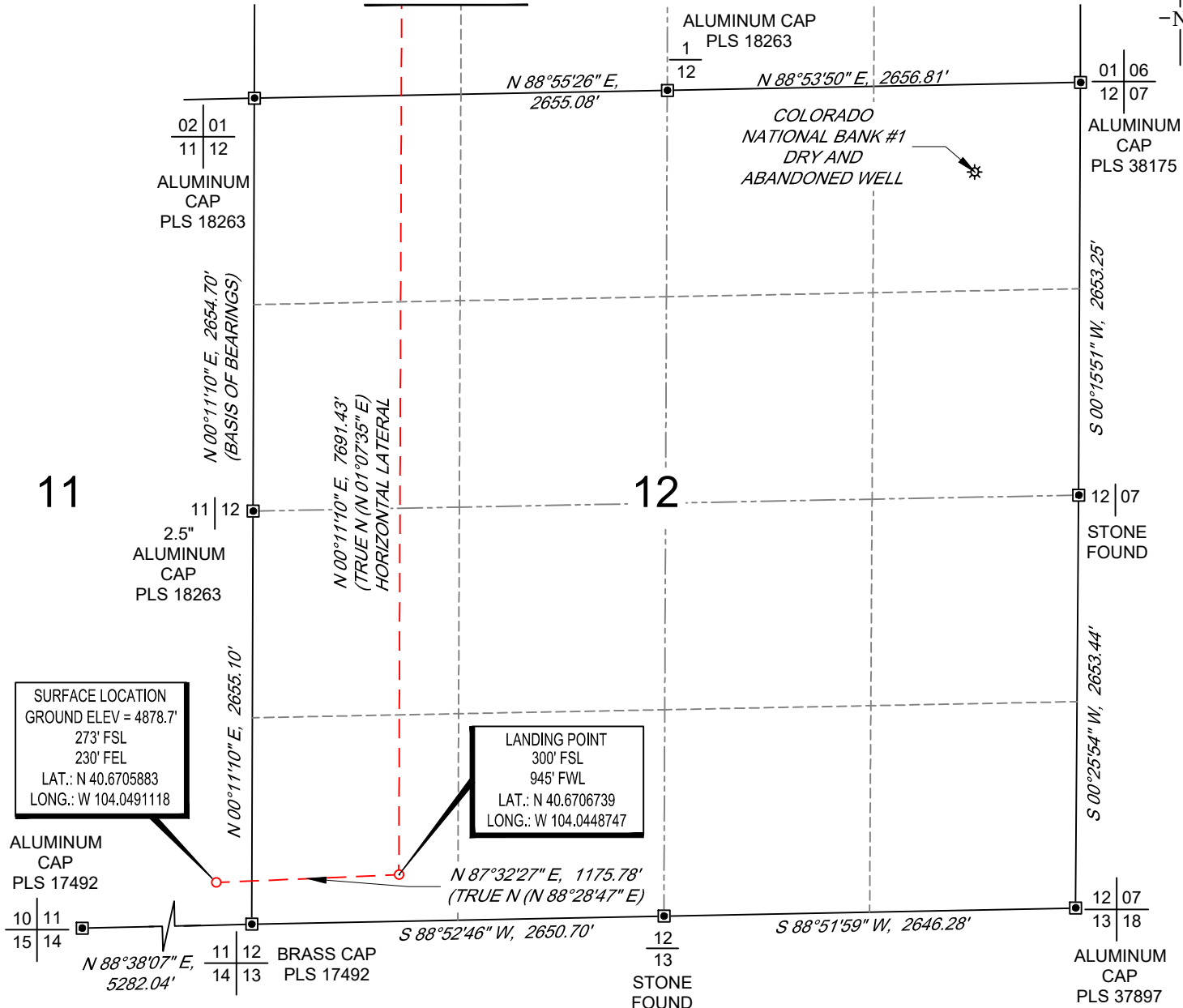
0' 500' 1000'

WELL LOCATION MAP

SHL SE/4 SE/4, SECTION 11, TOWNSHIP 8-N, RANGE 60-W
 LP SW/4 SW/4, SECTION 12, TOWNSHIP 8-N, RANGE 60-W
 BHL SW/4 NW/4, SECTION 1, TOWNSHIP 8-N, RANGE 60-W
 WELD COUNTY, COLORADO



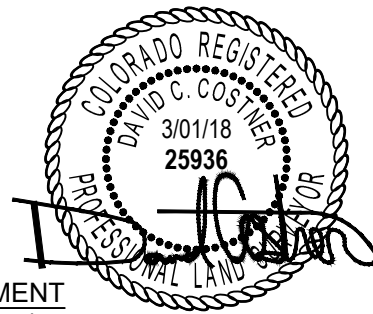
MATCH LINE
 SEE SHEET 2



NOTES

1. Horizontal (NAD 83) and vertical (NAVD 88) datum is based on the Trimble VRS Network or OPUS Solution.
2. All directions, distances, and dimensions shown hereon are based on coordinates from the "Colorado coordinate system of 1983 north zone" (article 52 of title 38, C.R.S.).
3. All section line dimensions shown hereon are based on field measurements of existing monuments and/or physical evidence found in the field unless otherwise indicated.
4. Physical features shown hereon are for graphical representation only.
5. See Form 2A, if applicable for visible improvements within 500' of wellhead.
6. Distances to nearest section lines are measured perpendicularly.
7. This is not a land survey nor land survey plat.

PDOP Reading: 1.5 Instrument Operator: Joe DiGregorio Date Surveyed: 02/24/2018



SURVEYOR'S STATEMENT

The undersigned hereby states that the well location shown hereon was staked on the ground based on existing monumentation and/or physical evidence found in the field and is correct to the best of my knowledge, information and belief.



VERDAD RESOURCES
 SONIC STAR 1101-03H

MML 03/01/2018

REVISION:

SHEET: 1 OF 2

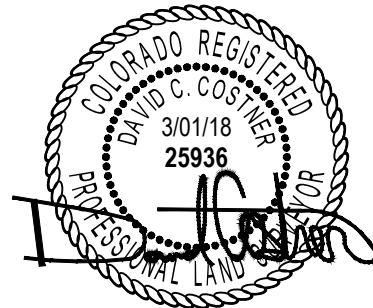
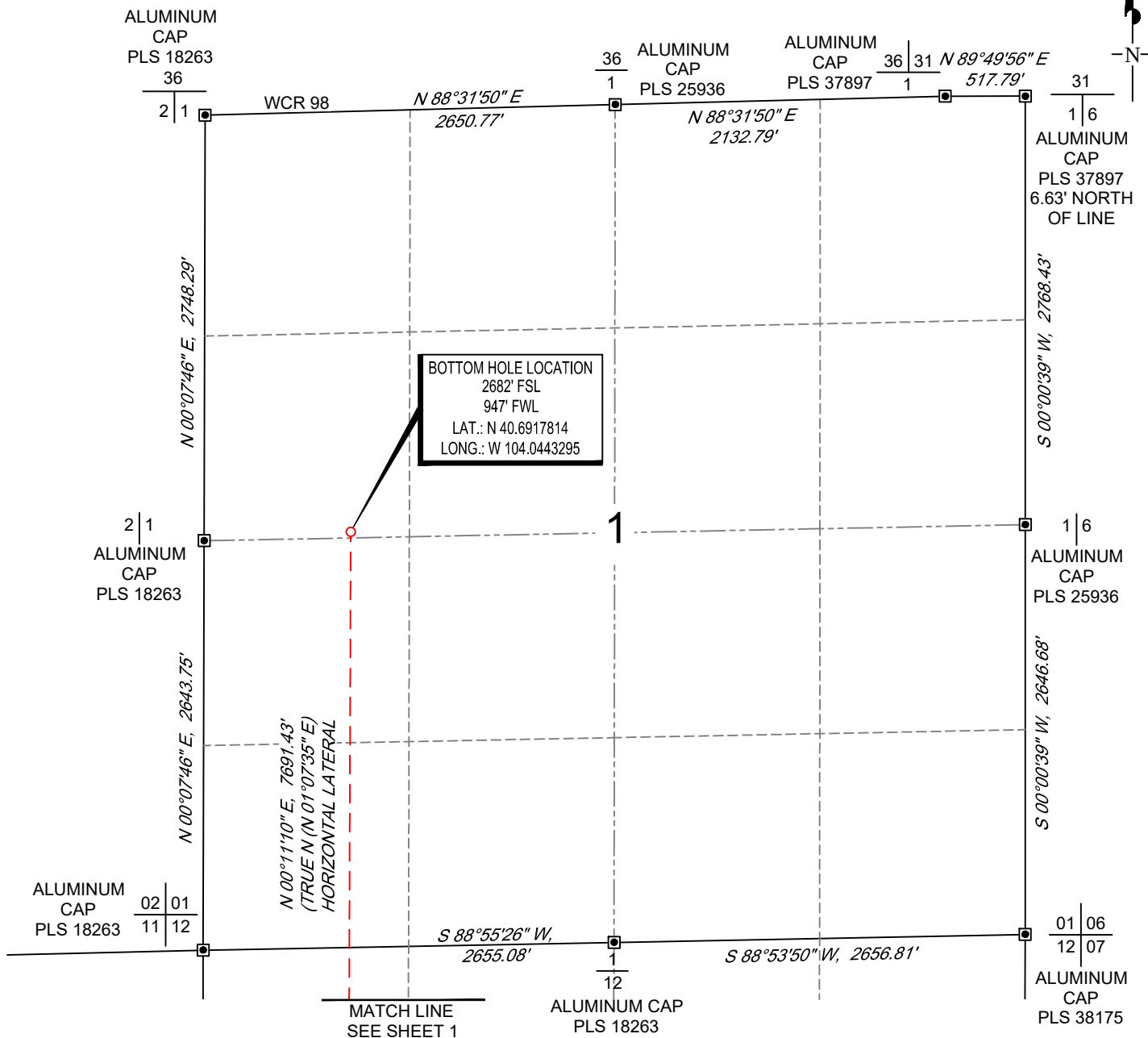
INT DATE

FILE:LO_SONIC_STAR_1101_03H

SCALE: 1" = 1000'
0' 500' 1000'

BOTTOM HOLE MAP

SHL SE/4 SE/4, SECTION 11, TOWNSHIP 8-N, RANGE 60-W
LP SW/4 SW/4, SECTION 12, TOWNSHIP 8-N, RANGE 60-W
BHL SW/4 NW/4, SECTION 1, TOWNSHIP 8-N, RANGE 60-W
WELD COUNTY, COLORADO



VERDAD RESOURCES SONIC STAR 1101-03H	MML	03/01/2018	REVISION:	
	SHEET :	2 OF 2	INT	DATE
	FILE:LO_SONIC_STAR_1101_03H			

