

BISON OIL & GAS II, LLC

WELD COUNTY, COLORADO (NAD 83)

SW SW SEC. 6 T8N R60W 6th P.M.

HUNT 8-60 6C-5-10

ORIGINAL WELLBORE

15 March, 2018

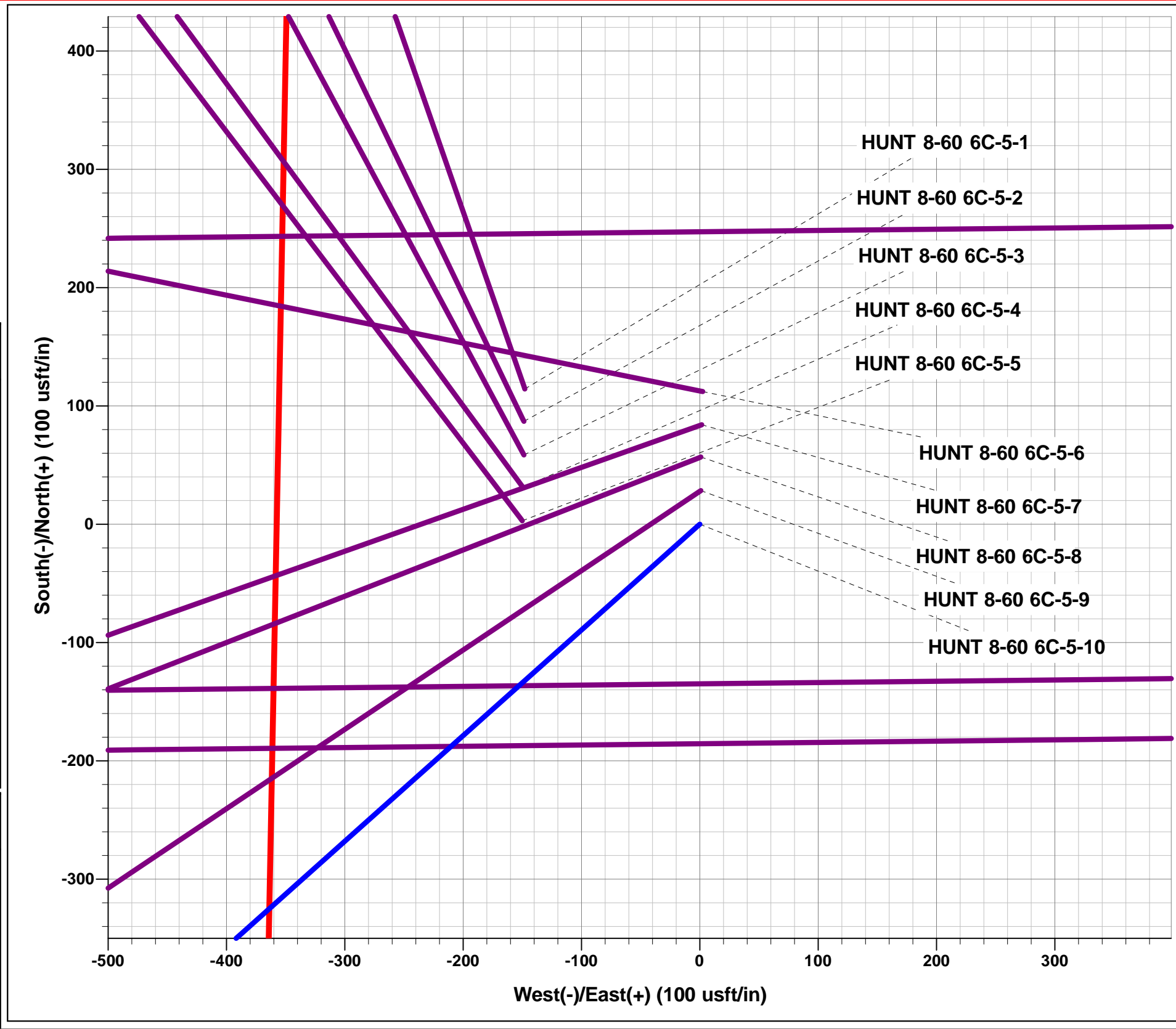
Plan: PROPOSAL #2



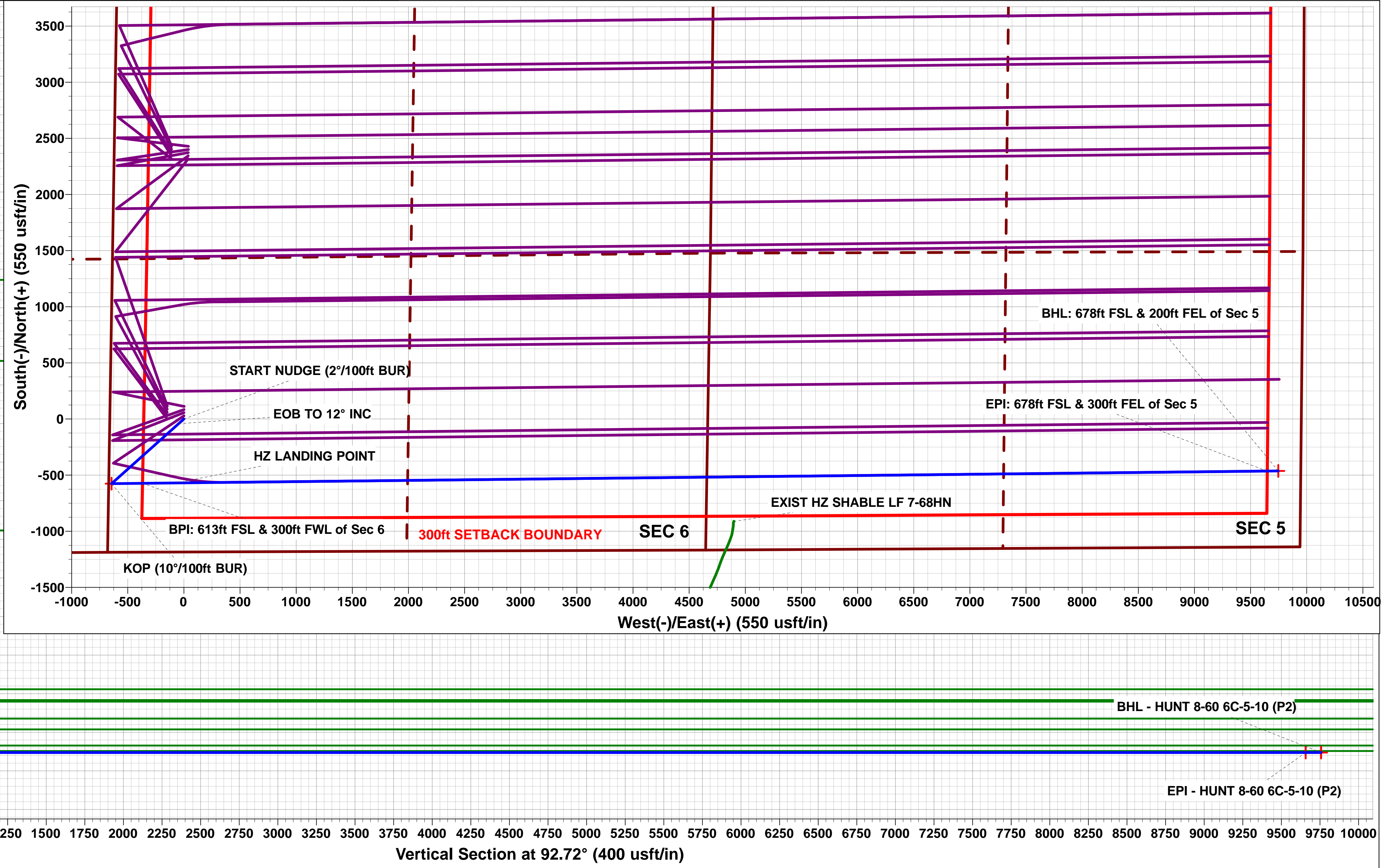
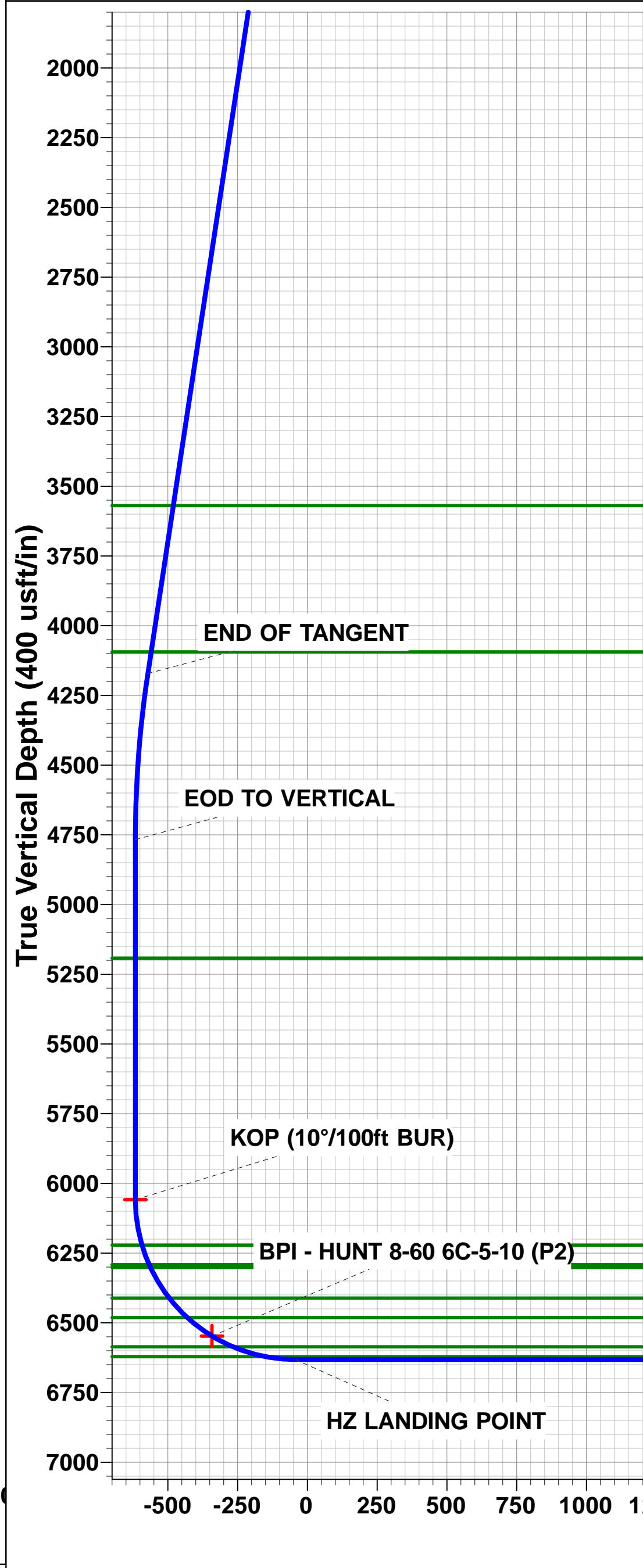
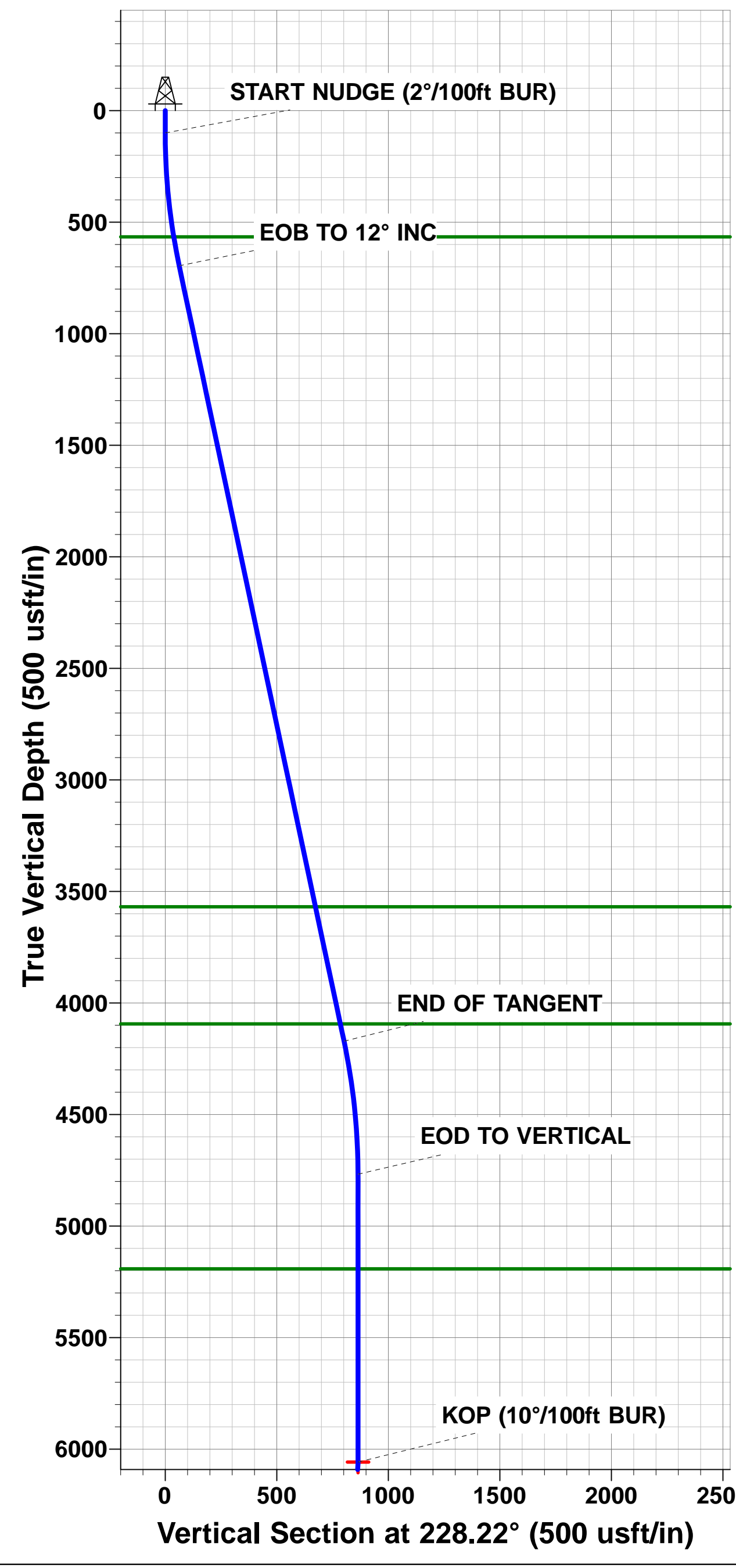
Project: WELD COUNTY, COLORADO (NAD 83)
Site: SW SW SEC. 6 T8N R60W 6th P.M.
Well: HUNT 8-60 6C-5-10
Wellbore: ORIGINAL WELLBORE
Design: PROPOSAL #2

ANNOTATIONS									
TVD	MD	Inc	Azi	+N/-S	+E/-W	Vsect	Dep	Annotation	
0.00	0.00	0.00	0.00	0.00	0.00	0.00	0.00	SHL: 1185ft FSL & 660ft FWL of Sec 6	
100.00	100.00	0.00	0.00	0.00	0.00	0.00	0.00	START NUDGE (2°/100ft BUR)	
695.62	700.00	12.00	228.22	-41.71	-46.69	-44.66	62.60	EOB TO 12° INC	
4171.88	4253.92	12.00	228.22	-533.99	-597.71	-571.73	801.50	END OF TANGENT	
4767.50	4853.92	0.00	228.22	-575.70	-644.40	-616.38	864.11	EOD TO VERTICAL	
6058.44	6144.86	0.00	0.00	-575.70	-644.40	-616.38	864.11	KOP (10°/100ft BUR)	
6547.83	6731.51	58.67	89.38	-572.72	-369.42	-341.85	1139.38	BPI: 613ft FSL & 300ft FWL of Sec 6	
6631.40	7044.86	90.00	89.38	-569.50	-71.47	-44.39	1437.07	HZ LANDING POINT	
6631.40	16763.33	90.00	89.37	-463.71	9646.42	9657.56	11155.54	EPI: 678ft FSL & 300ft FEL of Sec 5	
6631.40	16863.45	90.00	89.33	-462.58	9746.54	9757.51	11255.66	BHL: 678ft FSL & 200ft FEL of Sec 5	

WELLBORE TARGET DETAILS (LAT/LONG)						
Name	TVD	+N/-S	+E/-W	Latitude	Longitude	
KOP - HUNT 8-60 6C-5-10 (P2)	6058.44	-575.70	-644.40	40.685656	-104.143451	
EPI - HUNT 8-60 6C-5-10 (P2)	6631.40	-463.71	9646.42	40.685958	-104.106346	
BHL - HUNT 8-60 6C-5-10 (P2)	6631.40	-462.58	9746.54	40.685961	-104.105985	
BPI - HUNT 8-60 6C-5-10 (P2)	6547.83	-572.72	-369.42	40.685664	-104.142460	



		Azimuths to True North Magnetic North: 7.85°	
		Magnetic Field Strength: 52551.6snT Dip Angle: 67.17° Date: 29/11/2017 Model: IGRF2015	
FORMATION TOP DETAILS			
TVDPath	MDPath	Formation	
566.40	568.49	PIERRE SHALE	
3569.40	3637.98	PARKMAN	
4094.40	4174.71	SUSSEX	
5192.40	5278.82	SHANNON	
6221.40	6310.10	SHARON SPRINGS SHALE	
6291.40	6384.76	NIOBRARA FORMATION	
6301.40	6395.76	NIOBRARA A CHALK	
6411.40	6525.12	NIOBRARA B CHALK	
6481.40	6620.64	NIOBRARA C CHALK	
6586.40	6816.27	FT HAYS	
6621.40	6937.66	CODELL	
PROPOSED LOCAL COORDINATES:			
SHL: 1185ft FSL & 660ft FWL of Sec 6			
BEGIN PROD INT: 613ft FSL & 300ft FWL of Sec 6			
END PROD INTERVAL: 678ft FSL & 300ft FEL of Sec 5			
BHL: 678ft FSL & 200ft FEL of Sec 5			



Planning Report



Database:	EDM 5000.1 Single User Db	Local Co-ordinate Reference:	Well HUNT 8-60 6C-5-10
Company:	BISON OIL & GAS II, LLC	TVD Reference:	KB-EST @ 4986.40usft (Original Well Elev)
Project:	WELD COUNTY, COLORADO (NAD 83)	MD Reference:	KB-EST @ 4986.40usft (Original Well Elev)
Site:	SW SW SEC. 6 T8N R60W 6th P.M.	North Reference:	True
Well:	HUNT 8-60 6C-5-10	Survey Calculation Method:	Minimum Curvature
Wellbore:	ORIGINAL WELLBORE		
Design:	PROPOSAL #2		

Project	WELD COUNTY, COLORADO (NAD 83)		
Map System:	US State Plane 1983	System Datum:	Mean Sea Level
Geo Datum:	North American Datum 1983		
Map Zone:	Colorado Northern Zone		Using geodetic scale factor

Site	SW SW SEC. 6 T8N R60W 6th P.M.				
Site Position:		Northing:	1,496,202.88 usft	Latitude:	40.687550
From:	Lat/Long	Easting:	3,376,692.05 usft	Longitude:	-104.141661
Position Uncertainty:	0.00 usft	Slot Radius:	1.10000 ft	Grid Convergence:	0.88 °

Well	HUNT 8-60 6C-5-10					
Well Position	+N/-S	-114.41 usft	Northing:	1,496,090.75 usft	Latitude:	40.687236
	+E/-W	147.82 usft	Easting:	3,376,841.61 usft	Longitude:	-104.141128
Position Uncertainty		0.00 usft	Wellhead Elevation:	usft	Ground Level:	4,961.40 usft

Wellbore	ORIGINAL WELLBORE				
Magnetics	Model Name	Sample Date	Declination (°)	Dip Angle (°)	Field Strength (nT)
	IGRF2015	29/11/2017	7.85	67.17	52,552

Design	PROPOSAL #2			
Audit Notes:				
Version:	Phase:	PROTOTYPE	Tie On Depth:	0.00
Vertical Section:	Depth From (TVD) (usft)	+N/-S (usft)	+E/-W (usft)	Direction (°)
	0.00	0.00	0.00	92.72

Plan Sections											
MD (usft)	Inc (°)	Azi (°)	Vertical Depth	SS (usft)	+N/-S (usft)	+E/-W (usft)	Dogleg Rate (°/100usf)	Build Rate (°/100usf)	Turn Rate (°/100usf)	TFO (°)	Target
0.00	0.00	0.00	0.00	-4,986.40	0.00	0.00	0.00	0.00	0.00	0.00	
100.00	0.00	0.00	100.00	-4,886.40	0.00	0.00	0.00	0.00	0.00	0.00	
700.00	12.00	228.22	695.62	-4,290.78	-41.71	-46.69	2.00	2.00	0.00	228.22	
4,253.92	12.00	228.22	4,171.89	-814.51	-533.99	-597.71	0.00	0.00	0.00	0.00	
4,853.92	0.00	0.00	4,767.51	-218.89	-575.70	-644.40	2.00	-2.00	0.00	180.00	
6,144.86	0.00	0.00	6,058.44	1,072.04	-575.70	-644.40	0.00	0.00	0.00	0.00	KOP - HUNT 8-60 6
7,044.86	90.00	89.38	6,631.40	1,645.00	-569.50	-71.48	10.00	10.00	0.00	89.38	
16,763.33	90.00	89.37	6,631.40	1,645.00	-463.71	9,646.42	0.00	0.00	0.00	-90.20	EPI - HUNT 8-60 6
16,863.45	90.00	89.33	6,631.40	1,645.00	-462.58	9,746.54	0.04	0.00	-0.04	-89.93	BHL - HUNT 8-60 6

Planning Report



Database:	EDM 5000.1 Single User Db	Local Co-ordinate Reference:	Well HUNT 8-60 6C-5-10
Company:	BISON OIL & GAS II, LLC	TVD Reference:	KB-EST @ 4986.40usft (Original Well Elev)
Project:	WELD COUNTY, COLORADO (NAD 83)	MD Reference:	KB-EST @ 4986.40usft (Original Well Elev)
Site:	SW SW SEC. 6 T8N R60W 6th P.M.	North Reference:	True
Well:	HUNT 8-60 6C-5-10	Survey Calculation Method:	Minimum Curvature
Wellbore:	ORIGINAL WELLBORE		
Design:	PROPOSAL #2		

Planned Survey										
MD (usft)	Inc (°)	Azi (°)	TVD (usft)	SS (usft)	+N/-S (usft)	+E/-W (usft)	Vertical Section (usft)	Dogleg Rate (°/100usft)	Build Rate (°/100usft)	Turn Rate (°/100usft)
SHL: 1185ft FSL & 660ft FWL of Sec 6										
0.00	0.00	0.00	0.00	4,986.40	0.00	0.00	0.00	0.00	0.00	0.00
START NUDGE (2°/100ft BUR)										
100.00	0.00	0.00	100.00	4,886.40	0.00	0.00	0.00	0.00	0.00	0.00
200.00	2.00	228.22	199.98	4,786.42	-1.16	-1.30	-1.24	2.00	2.00	0.00
300.00	4.00	228.22	299.84	4,686.56	-4.65	-5.20	-4.98	2.00	2.00	0.00
400.00	6.00	228.22	399.45	4,586.95	-10.46	-11.70	-11.19	2.00	2.00	0.00
500.00	8.00	228.22	498.70	4,487.70	-18.57	-20.79	-19.89	2.00	2.00	0.00
PIERRE SHALE (BASE OF FOX HILLS)										
568.49	9.37	228.22	566.40	4,420.00	-25.46	-28.50	-27.26	2.00	2.00	0.00
600.00	10.00	228.22	597.47	4,388.93	-29.00	-32.46	-31.05	2.00	2.00	0.00
EOB TO 12° INC										
700.00	12.00	228.22	695.62	4,290.78	-41.71	-46.69	-44.66	2.00	2.00	0.00
800.00	12.00	228.22	793.44	4,192.96	-55.56	-62.19	-59.49	0.00	0.00	0.00
900.00	12.00	228.22	891.25	4,095.15	-69.41	-77.69	-74.32	0.00	0.00	0.00
1,000.00	12.00	228.22	989.07	3,997.33	-83.26	-93.20	-89.15	0.00	0.00	0.00
1,100.00	12.00	228.22	1,086.88	3,899.52	-97.12	-108.70	-103.98	0.00	0.00	0.00
1,200.00	12.00	228.22	1,184.70	3,801.70	-110.97	-124.21	-118.81	0.00	0.00	0.00
1,300.00	12.00	228.22	1,282.51	3,703.89	-124.82	-139.71	-133.64	0.00	0.00	0.00
1,400.00	12.00	228.22	1,380.33	3,606.07	-138.67	-155.22	-148.47	0.00	0.00	0.00
1,500.00	12.00	228.22	1,478.14	3,508.26	-152.52	-170.72	-163.30	0.00	0.00	0.00
1,600.00	12.00	228.22	1,575.96	3,410.44	-166.37	-186.23	-178.13	0.00	0.00	0.00
1,700.00	12.00	228.22	1,673.77	3,312.63	-180.23	-201.73	-192.96	0.00	0.00	0.00
1,800.00	12.00	228.22	1,771.59	3,214.81	-194.08	-217.24	-207.79	0.00	0.00	0.00
1,900.00	12.00	228.22	1,869.40	3,117.00	-207.93	-232.74	-222.62	0.00	0.00	0.00
2,000.00	12.00	228.22	1,967.22	3,019.18	-221.78	-248.25	-237.45	0.00	0.00	0.00
2,100.00	12.00	228.22	2,065.03	2,921.37	-235.63	-263.75	-252.29	0.00	0.00	0.00
2,200.00	12.00	228.22	2,162.84	2,823.56	-249.49	-279.26	-267.12	0.00	0.00	0.00
2,300.00	12.00	228.22	2,260.66	2,725.74	-263.34	-294.76	-281.95	0.00	0.00	0.00
2,400.00	12.00	228.22	2,358.47	2,627.93	-277.19	-310.27	-296.78	0.00	0.00	0.00
2,500.00	12.00	228.22	2,456.29	2,530.11	-291.04	-325.77	-311.61	0.00	0.00	0.00
2,600.00	12.00	228.22	2,554.10	2,432.30	-304.89	-341.28	-326.44	0.00	0.00	0.00
2,700.00	12.00	228.22	2,651.92	2,334.48	-318.74	-356.78	-341.27	0.00	0.00	0.00
2,800.00	12.00	228.22	2,749.73	2,236.67	-332.60	-372.29	-356.10	0.00	0.00	0.00
2,900.00	12.00	228.22	2,847.55	2,138.85	-346.45	-387.79	-370.93	0.00	0.00	0.00
3,000.00	12.00	228.22	2,945.36	2,041.04	-360.30	-403.30	-385.76	0.00	0.00	0.00
3,100.00	12.00	228.22	3,043.18	1,943.22	-374.15	-418.80	-400.59	0.00	0.00	0.00
3,200.00	12.00	228.22	3,140.99	1,845.41	-388.00	-434.31	-415.42	0.00	0.00	0.00
3,300.00	12.00	228.22	3,238.81	1,747.59	-401.86	-449.81	-430.25	0.00	0.00	0.00
3,400.00	12.00	228.22	3,336.62	1,649.78	-415.71	-465.32	-445.08	0.00	0.00	0.00
3,500.00	12.00	228.22	3,434.44	1,551.96	-429.56	-480.82	-459.92	0.00	0.00	0.00
3,600.00	12.00	228.22	3,532.25	1,454.15	-443.41	-496.32	-474.75	0.00	0.00	0.00
PARKMAN										
3,637.98	12.00	228.22	3,569.40	1,417.00	-448.67	-502.21	-480.38	0.00	0.00	0.00
3,700.00	12.00	228.22	3,630.07	1,356.33	-457.26	-511.83	-489.58	0.00	0.00	0.00
3,800.00	12.00	228.22	3,727.88	1,258.52	-471.11	-527.33	-504.41	0.00	0.00	0.00
3,900.00	12.00	228.22	3,825.70	1,160.70	-484.97	-542.84	-519.24	0.00	0.00	0.00
4,000.00	12.00	228.22	3,923.51	1,062.89	-498.82	-558.34	-534.07	0.00	0.00	0.00
4,100.00	12.00	228.22	4,021.32	965.08	-512.67	-573.85	-548.90	0.00	0.00	0.00
SUSSEX										
4,174.71	12.00	228.22	4,094.40	892.00	-523.02	-585.43	-559.98	0.00	0.00	0.00
4,200.00	12.00	228.22	4,119.14	867.26	-526.52	-589.35	-563.73	0.00	0.00	0.00
END OF TANGENT										

Planning Report



Database:	EDM 5000.1 Single User Db	Local Co-ordinate Reference:	Well HUNT 8-60 6C-5-10
Company:	BISON OIL & GAS II, LLC	TVD Reference:	KB-EST @ 4986.40usft (Original Well Elev)
Project:	WELD COUNTY, COLORADO (NAD 83)	MD Reference:	KB-EST @ 4986.40usft (Original Well Elev)
Site:	SW SW SEC. 6 T8N R60W 6th P.M.	North Reference:	True
Well:	HUNT 8-60 6C-5-10	Survey Calculation Method:	Minimum Curvature
Wellbore:	ORIGINAL WELLBORE		
Design:	PROPOSAL #2		

Planned Survey										
MD (usft)	Inc (°)	Azi (°)	TVD (usft)	SS (usft)	+N/-S (usft)	+E/-W (usft)	Vertical Section (usft)	Dogleg Rate (°/100usft)	Build Rate (°/100usft)	Turn Rate (°/100usft)
4,253.92	12.00	228.22	4,171.88	814.52	-533.99	-597.71	-571.73	0.00	0.00	0.00
4,300.00	11.08	228.22	4,217.03	769.37	-540.13	-604.59	-578.30	2.00	-2.00	0.00
4,400.00	9.08	228.22	4,315.48	670.92	-551.79	-617.64	-590.78	2.00	-2.00	0.00
4,500.00	7.08	228.22	4,414.48	571.92	-561.15	-628.12	-600.81	2.00	-2.00	0.00
4,600.00	5.08	228.22	4,513.92	472.48	-568.21	-636.01	-608.36	2.00	-2.00	0.00
4,700.00	3.08	228.22	4,613.66	372.74	-572.95	-641.32	-613.43	2.00	-2.00	0.00
4,800.00	1.08	228.22	4,713.59	272.81	-575.36	-644.02	-616.02	2.00	-2.00	0.00
EOD TO VERTICAL										
4,853.92	0.00	228.22	4,767.50	218.90	-575.70	-644.40	-616.38	2.00	-2.00	0.00
4,900.00	0.00	0.00	4,813.58	172.82	-575.70	-644.40	-616.38	0.00	0.00	0.00
5,000.00	0.00	0.00	4,913.58	72.82	-575.70	-644.40	-616.38	0.00	0.00	0.00
5,100.00	0.00	0.00	5,013.58	-27.18	-575.70	-644.40	-616.38	0.00	0.00	0.00
5,200.00	0.00	0.00	5,113.58	-127.18	-575.70	-644.40	-616.38	0.00	0.00	0.00
SHANNON										
5,278.82	0.00	0.00	5,192.40	-206.00	-575.70	-644.40	-616.38	0.00	0.00	0.00
5,300.00	0.00	0.00	5,213.58	-227.18	-575.70	-644.40	-616.38	0.00	0.00	0.00
5,400.00	0.00	0.00	5,313.58	-327.18	-575.70	-644.40	-616.38	0.00	0.00	0.00
5,500.00	0.00	0.00	5,413.58	-427.18	-575.70	-644.40	-616.38	0.00	0.00	0.00
5,600.00	0.00	0.00	5,513.58	-527.18	-575.70	-644.40	-616.38	0.00	0.00	0.00
5,700.00	0.00	0.00	5,613.58	-627.18	-575.70	-644.40	-616.38	0.00	0.00	0.00
5,800.00	0.00	0.00	5,713.58	-727.18	-575.70	-644.40	-616.38	0.00	0.00	0.00
5,900.00	0.00	0.00	5,813.58	-827.18	-575.70	-644.40	-616.38	0.00	0.00	0.00
6,000.00	0.00	0.00	5,913.58	-927.18	-575.70	-644.40	-616.38	0.00	0.00	0.00
6,100.00	0.00	0.00	6,013.58	-1,027.18	-575.70	-644.40	-616.38	0.00	0.00	0.00
KOP (10°/100ft BUR)										
6,144.86	0.00	0.00	6,058.44	-1,072.04	-575.70	-644.40	-616.38	0.00	0.00	0.00
6,200.00	5.51	89.38	6,113.50	-1,127.10	-575.67	-641.75	-613.74	10.00	10.00	0.00
6,300.00	15.51	89.38	6,211.70	-1,225.30	-575.47	-623.52	-595.54	10.00	10.00	0.00
SHARON SPRINGS SHALE										
6,310.10	16.52	89.38	6,221.40	-1,235.00	-575.44	-620.74	-592.76	10.00	10.00	0.00
NIORARA FORMATION										
6,384.76	23.99	89.38	6,291.40	-1,305.00	-575.16	-594.91	-566.97	10.00	10.00	0.00
NIORARA A CHALK										
6,395.76	25.09	89.38	6,301.40	-1,315.00	-575.11	-590.34	-562.41	10.00	10.00	0.00
6,400.00	25.51	89.38	6,305.24	-1,318.84	-575.10	-588.53	-560.60	10.00	10.00	0.00
6,500.00	35.51	89.38	6,391.28	-1,404.88	-574.55	-537.82	-509.98	10.00	10.00	0.00
NIORARA B CHALK										
6,525.12	38.03	89.38	6,411.40	-1,425.00	-574.38	-522.78	-494.96	10.00	10.00	0.00
6,600.00	45.51	89.38	6,467.20	-1,480.80	-573.84	-472.94	-445.20	10.00	10.00	0.00
NIORARA C CHALK										
6,620.64	47.58	89.38	6,481.40	-1,495.00	-573.68	-457.96	-430.25	10.00	10.00	0.00
6,700.00	55.51	89.38	6,530.71	-1,544.31	-573.01	-395.86	-368.25	10.00	10.00	0.00
BPI: 613ft FSL & 300ft FWL of Sec 6										
6,731.51	58.67	89.38	6,547.83	-1,561.43	-572.72	-369.42	-341.85	10.00	10.00	0.00
6,800.00	65.51	89.38	6,579.87	-1,593.47	-572.07	-308.93	-281.46	10.00	10.00	0.00
FT HAYS										
6,816.27	67.14	89.38	6,586.40	-1,600.00	-571.91	-294.04	-266.59	10.00	10.00	0.00
6,900.00	75.51	89.38	6,613.18	-1,626.78	-571.05	-214.78	-187.47	10.00	10.00	0.00
CODELL										
6,937.66	79.28	89.38	6,621.40	-1,635.00	-570.65	-178.04	-150.78	10.00	10.00	0.00
7,000.00	85.51	89.38	6,629.64	-1,643.24	-569.98	-116.28	-89.13	10.00	10.00	0.00
HZ LANDING POINT										

Planning Report



Database:	EDM 5000.1 Single User Db	Local Co-ordinate Reference:	Well HUNT 8-60 6C-5-10
Company:	BISON OIL & GAS II, LLC	TVD Reference:	KB-EST @ 4986.40usft (Original Well Elev)
Project:	WELD COUNTY, COLORADO (NAD 83)	MD Reference:	KB-EST @ 4986.40usft (Original Well Elev)
Site:	SW SW SEC. 6 T8N R60W 6th P.M.	North Reference:	True
Well:	HUNT 8-60 6C-5-10	Survey Calculation Method:	Minimum Curvature
Wellbore:	ORIGINAL WELLBORE		
Design:	PROPOSAL #2		

Planned Survey										
MD (usft)	Inc (°)	Azi (°)	TVD (usft)	SS (usft)	+N/-S (usft)	+E/-W (usft)	Vertical Section (usft)	Dogleg Rate (°/100usft)	Build Rate (°/100usft)	Turn Rate (°/100usft)
7,044.86	90.00	89.38	6,631.40	-1,645.00	-569.50	-71.47	-44.39	10.00	10.00	0.00
7,100.00	90.00	89.38	6,631.40	-1,645.00	-568.90	-16.33	10.65	0.00	0.00	0.00
7,200.00	90.00	89.38	6,631.40	-1,645.00	-567.82	83.66	110.48	0.00	0.00	0.00
7,300.00	90.00	89.38	6,631.40	-1,645.00	-566.74	183.65	210.32	0.00	0.00	0.00
7,400.00	90.00	89.38	6,631.40	-1,645.00	-565.66	283.65	310.15	0.00	0.00	0.00
7,500.00	90.00	89.38	6,631.40	-1,645.00	-564.57	383.64	409.98	0.00	0.00	0.00
7,600.00	90.00	89.38	6,631.40	-1,645.00	-563.49	483.64	509.81	0.00	0.00	0.00
7,700.00	90.00	89.38	6,631.40	-1,645.00	-562.41	583.63	609.64	0.00	0.00	0.00
7,800.00	90.00	89.38	6,631.40	-1,645.00	-561.32	683.62	709.47	0.00	0.00	0.00
7,900.00	90.00	89.38	6,631.40	-1,645.00	-560.24	783.62	809.30	0.00	0.00	0.00
8,000.00	90.00	89.38	6,631.40	-1,645.00	-559.16	883.61	909.13	0.00	0.00	0.00
8,100.00	90.00	89.38	6,631.40	-1,645.00	-558.08	983.61	1,008.96	0.00	0.00	0.00
8,200.00	90.00	89.38	6,631.40	-1,645.00	-556.99	1,083.60	1,108.79	0.00	0.00	0.00
8,300.00	90.00	89.38	6,631.40	-1,645.00	-555.91	1,183.60	1,208.62	0.00	0.00	0.00
8,400.00	90.00	89.38	6,631.40	-1,645.00	-554.82	1,283.59	1,308.45	0.00	0.00	0.00
8,500.00	90.00	89.38	6,631.40	-1,645.00	-553.74	1,383.58	1,408.28	0.00	0.00	0.00
8,600.00	90.00	89.38	6,631.40	-1,645.00	-552.66	1,483.58	1,508.11	0.00	0.00	0.00
8,700.00	90.00	89.38	6,631.40	-1,645.00	-551.57	1,583.57	1,607.94	0.00	0.00	0.00
8,800.00	90.00	89.38	6,631.40	-1,645.00	-550.49	1,683.57	1,707.77	0.00	0.00	0.00
8,900.00	90.00	89.38	6,631.40	-1,645.00	-549.40	1,783.56	1,807.60	0.00	0.00	0.00
9,000.00	90.00	89.38	6,631.40	-1,645.00	-548.32	1,883.55	1,907.43	0.00	0.00	0.00
9,100.00	90.00	89.38	6,631.40	-1,645.00	-547.23	1,983.55	2,007.26	0.00	0.00	0.00
9,200.00	90.00	89.38	6,631.40	-1,645.00	-546.15	2,083.54	2,107.09	0.00	0.00	0.00
9,300.00	90.00	89.38	6,631.40	-1,645.00	-545.06	2,183.54	2,206.92	0.00	0.00	0.00
9,400.00	90.00	89.38	6,631.40	-1,645.00	-543.98	2,283.53	2,306.75	0.00	0.00	0.00
9,500.00	90.00	89.38	6,631.40	-1,645.00	-542.89	2,383.52	2,406.58	0.00	0.00	0.00
9,600.00	90.00	89.38	6,631.40	-1,645.00	-541.81	2,483.52	2,506.41	0.00	0.00	0.00
9,700.00	90.00	89.38	6,631.40	-1,645.00	-540.72	2,583.51	2,606.24	0.00	0.00	0.00
9,800.00	90.00	89.38	6,631.40	-1,645.00	-539.64	2,683.51	2,706.07	0.00	0.00	0.00
9,900.00	90.00	89.38	6,631.40	-1,645.00	-538.55	2,783.50	2,805.90	0.00	0.00	0.00
10,000.00	90.00	89.38	6,631.40	-1,645.00	-537.47	2,883.50	2,905.73	0.00	0.00	0.00
10,100.00	90.00	89.38	6,631.40	-1,645.00	-536.38	2,983.49	3,005.56	0.00	0.00	0.00
10,200.00	90.00	89.38	6,631.40	-1,645.00	-535.29	3,083.48	3,105.39	0.00	0.00	0.00
10,300.00	90.00	89.38	6,631.40	-1,645.00	-534.21	3,183.48	3,205.22	0.00	0.00	0.00
10,400.00	90.00	89.38	6,631.40	-1,645.00	-533.12	3,283.47	3,305.05	0.00	0.00	0.00
10,500.00	90.00	89.38	6,631.40	-1,645.00	-532.03	3,383.47	3,404.88	0.00	0.00	0.00
10,600.00	90.00	89.38	6,631.40	-1,645.00	-530.95	3,483.46	3,504.71	0.00	0.00	0.00
10,700.00	90.00	89.38	6,631.40	-1,645.00	-529.86	3,583.45	3,604.54	0.00	0.00	0.00
10,800.00	90.00	89.38	6,631.40	-1,645.00	-528.77	3,683.45	3,704.37	0.00	0.00	0.00
10,900.00	90.00	89.38	6,631.40	-1,645.00	-527.69	3,783.44	3,804.20	0.00	0.00	0.00
11,000.00	90.00	89.38	6,631.40	-1,645.00	-526.60	3,883.44	3,904.03	0.00	0.00	0.00
11,100.00	90.00	89.38	6,631.40	-1,645.00	-525.51	3,983.43	4,003.86	0.00	0.00	0.00
11,200.00	90.00	89.38	6,631.40	-1,645.00	-524.42	4,083.42	4,103.69	0.00	0.00	0.00
11,300.00	90.00	89.38	6,631.40	-1,645.00	-523.34	4,183.42	4,203.52	0.00	0.00	0.00
11,400.00	90.00	89.38	6,631.40	-1,645.00	-522.25	4,283.41	4,303.35	0.00	0.00	0.00
11,500.00	90.00	89.38	6,631.40	-1,645.00	-521.16	4,383.41	4,403.18	0.00	0.00	0.00
11,600.00	90.00	89.38	6,631.40	-1,645.00	-520.07	4,483.40	4,503.01	0.00	0.00	0.00
11,700.00	90.00	89.38	6,631.40	-1,645.00	-518.98	4,583.39	4,602.84	0.00	0.00	0.00
11,800.00	90.00	89.38	6,631.40	-1,645.00	-517.90	4,683.39	4,702.68	0.00	0.00	0.00
11,900.00	90.00	89.38	6,631.40	-1,645.00	-516.81	4,783.38	4,802.51	0.00	0.00	0.00
12,000.00	90.00	89.38	6,631.40	-1,645.00	-515.72	4,883.38	4,902.34	0.00	0.00	0.00
12,100.00	90.00	89.38	6,631.40	-1,645.00	-514.63	4,983.37	5,002.17	0.00	0.00	0.00
12,200.00	90.00	89.38	6,631.40	-1,645.00	-513.54	5,083.36	5,102.00	0.00	0.00	0.00
12,300.00	90.00	89.38	6,631.40	-1,645.00	-512.45	5,183.36	5,201.83	0.00	0.00	0.00

Planning Report



Database:	EDM 5000.1 Single User Db	Local Co-ordinate Reference:	Well HUNT 8-60 6C-5-10
Company:	BISON OIL & GAS II, LLC	TVD Reference:	KB-EST @ 4986.40usft (Original Well Elev)
Project:	WELD COUNTY, COLORADO (NAD 83)	MD Reference:	KB-EST @ 4986.40usft (Original Well Elev)
Site:	SW SW SEC. 6 T8N R60W 6th P.M.	North Reference:	True
Well:	HUNT 8-60 6C-5-10	Survey Calculation Method:	Minimum Curvature
Wellbore:	ORIGINAL WELLBORE		
Design:	PROPOSAL #2		

Planned Survey										
MD (usft)	Inc (°)	Azi (°)	TVD (usft)	SS (usft)	+N/-S (usft)	+E/-W (usft)	Vertical Section (usft)	Dogleg Rate (°/100usft)	Build Rate (°/100usft)	Turn Rate (°/100usft)
12,400.00	90.00	89.38	6,631.40	-1,645.00	-511.36	5,283.35	5,301.66	0.00	0.00	0.00
12,500.00	90.00	89.38	6,631.40	-1,645.00	-510.27	5,383.35	5,401.49	0.00	0.00	0.00
12,600.00	90.00	89.38	6,631.40	-1,645.00	-509.18	5,483.34	5,501.32	0.00	0.00	0.00
12,700.00	90.00	89.38	6,631.40	-1,645.00	-508.10	5,583.34	5,601.15	0.00	0.00	0.00
12,800.00	90.00	89.38	6,631.40	-1,645.00	-507.01	5,683.33	5,700.98	0.00	0.00	0.00
12,900.00	90.00	89.38	6,631.40	-1,645.00	-505.92	5,783.32	5,800.81	0.00	0.00	0.00
13,000.00	90.00	89.38	6,631.40	-1,645.00	-504.83	5,883.32	5,900.64	0.00	0.00	0.00
13,100.00	90.00	89.38	6,631.40	-1,645.00	-503.74	5,983.31	6,000.47	0.00	0.00	0.00
13,200.00	90.00	89.38	6,631.40	-1,645.00	-502.65	6,083.31	6,100.29	0.00	0.00	0.00
13,300.00	90.00	89.38	6,631.40	-1,645.00	-501.56	6,183.30	6,200.12	0.00	0.00	0.00
13,400.00	90.00	89.38	6,631.40	-1,645.00	-500.46	6,283.29	6,299.95	0.00	0.00	0.00
13,500.00	90.00	89.38	6,631.40	-1,645.00	-499.37	6,383.29	6,399.78	0.00	0.00	0.00
13,600.00	90.00	89.38	6,631.40	-1,645.00	-498.28	6,483.28	6,499.61	0.00	0.00	0.00
13,700.00	90.00	89.37	6,631.40	-1,645.00	-497.19	6,583.28	6,599.44	0.00	0.00	0.00
13,800.00	90.00	89.37	6,631.40	-1,645.00	-496.10	6,683.27	6,699.27	0.00	0.00	0.00
13,900.00	90.00	89.37	6,631.40	-1,645.00	-495.01	6,783.26	6,799.10	0.00	0.00	0.00
14,000.00	90.00	89.37	6,631.40	-1,645.00	-493.92	6,883.26	6,898.93	0.00	0.00	0.00
14,100.00	90.00	89.37	6,631.40	-1,645.00	-492.83	6,983.25	6,998.76	0.00	0.00	0.00
14,200.00	90.00	89.37	6,631.40	-1,645.00	-491.74	7,083.25	7,098.59	0.00	0.00	0.00
14,300.00	90.00	89.37	6,631.40	-1,645.00	-490.65	7,183.24	7,198.42	0.00	0.00	0.00
14,400.00	90.00	89.37	6,631.40	-1,645.00	-489.55	7,283.23	7,298.25	0.00	0.00	0.00
14,500.00	90.00	89.37	6,631.40	-1,645.00	-488.46	7,383.23	7,398.08	0.00	0.00	0.00
14,600.00	90.00	89.37	6,631.40	-1,645.00	-487.37	7,483.22	7,497.91	0.00	0.00	0.00
14,700.00	90.00	89.37	6,631.40	-1,645.00	-486.28	7,583.22	7,597.74	0.00	0.00	0.00
14,800.00	90.00	89.37	6,631.40	-1,645.00	-485.18	7,683.21	7,697.57	0.00	0.00	0.00
14,900.00	90.00	89.37	6,631.40	-1,645.00	-484.09	7,783.20	7,797.40	0.00	0.00	0.00
15,000.00	90.00	89.37	6,631.40	-1,645.00	-483.00	7,883.20	7,897.23	0.00	0.00	0.00
15,100.00	90.00	89.37	6,631.40	-1,645.00	-481.91	7,983.19	7,997.06	0.00	0.00	0.00
15,200.00	90.00	89.37	6,631.40	-1,645.00	-480.81	8,083.19	8,096.89	0.00	0.00	0.00
15,300.00	90.00	89.37	6,631.40	-1,645.00	-479.72	8,183.18	8,196.72	0.00	0.00	0.00
15,400.00	90.00	89.37	6,631.40	-1,645.00	-478.63	8,283.17	8,296.55	0.00	0.00	0.00
15,500.00	90.00	89.37	6,631.40	-1,645.00	-477.54	8,383.17	8,396.38	0.00	0.00	0.00
15,600.00	90.00	89.37	6,631.40	-1,645.00	-476.44	8,483.16	8,496.21	0.00	0.00	0.00
15,700.00	90.00	89.37	6,631.40	-1,645.00	-475.35	8,583.16	8,596.04	0.00	0.00	0.00
15,800.00	90.00	89.37	6,631.40	-1,645.00	-474.25	8,683.15	8,695.87	0.00	0.00	0.00
15,900.00	90.00	89.37	6,631.40	-1,645.00	-473.16	8,783.14	8,795.70	0.00	0.00	0.00
16,000.00	90.00	89.37	6,631.40	-1,645.00	-472.07	8,883.14	8,895.53	0.00	0.00	0.00
16,100.00	90.00	89.37	6,631.40	-1,645.00	-470.97	8,983.13	8,995.36	0.00	0.00	0.00
16,200.00	90.00	89.37	6,631.40	-1,645.00	-469.88	9,083.13	9,095.19	0.00	0.00	0.00
16,300.00	90.00	89.37	6,631.40	-1,645.00	-468.78	9,183.12	9,195.02	0.00	0.00	0.00
16,400.00	90.00	89.37	6,631.40	-1,645.00	-467.69	9,283.11	9,294.85	0.00	0.00	0.00
16,500.00	90.00	89.37	6,631.40	-1,645.00	-466.60	9,383.11	9,394.68	0.00	0.00	0.00
16,600.00	90.00	89.37	6,631.40	-1,645.00	-465.50	9,483.10	9,494.51	0.00	0.00	0.00
16,700.00	90.00	89.37	6,631.40	-1,645.00	-464.41	9,583.10	9,594.34	0.00	0.00	0.00
EPI: 678ft FSL & 300ft FEL of Sec 5										
16,763.33	90.00	89.37	6,631.40	-1,645.00	-463.71	9,646.42	9,657.56	0.00	0.00	0.00
16,800.00	90.00	89.36	6,631.40	-1,645.00	-463.31	9,683.09	9,694.17	0.04	0.00	-0.04
BHL: 678ft FSL & 200ft FEL of Sec 5										
16,863.45	90.00	89.33	6,631.40	-1,645.00	-462.58	9,746.54	9,757.51	0.04	0.00	-0.04

Planning Report



Database:	EDM 5000.1 Single User Db	Local Co-ordinate Reference:	Well HUNT 8-60 6C-5-10
Company:	BISON OIL & GAS II, LLC	TVD Reference:	KB-EST @ 4986.40usft (Original Well Elev)
Project:	WELD COUNTY, COLORADO (NAD 83)	MD Reference:	KB-EST @ 4986.40usft (Original Well Elev)
Site:	SW SW SEC. 6 T8N R60W 6th P.M.	North Reference:	True
Well:	HUNT 8-60 6C-5-10	Survey Calculation Method:	Minimum Curvature
Wellbore:	ORIGINAL WELLBORE		
Design:	PROPOSAL #2		

Formations					
MD (usft)	TVD (usft)	Name	Lithology	Dip (°)	Dip Direction (°)
568.49	566.40	PIERRE SHALE (BASE OF FOX HI			
3,637.98	3,569.40	PARKMAN			
4,174.71	4,094.40	SUSSEX			
5,278.82	5,192.40	SHANNON			
6,310.10	6,221.40	SHARON SPRINGS SHALE			
6,384.76	6,291.40	NIOBRARA FORMATION			
6,395.76	6,301.40	NIOBRARA A CHALK			
6,525.12	6,411.40	NIOBRARA B CHALK			
6,620.64	6,481.40	NIOBRARA C CHALK			
6,816.27	6,586.40	FT HAYS			
6,937.66	6,621.40	CODELL			

Plan Annotations				
MD (usft)	TVD (usft)	Local Coordinates		Comment
		+N/-S (usft)	+E/-W (usft)	
0.00	0.00	0.00	0.00	SHL: 1185ft FSL & 660ft FWL of Sec 6
100.00	100.00	0.00	0.00	START NUDGE (2°/100ft BUR)
700.00	695.62	-41.71	-46.69	EOB TO 12° INC
4,253.92	4,171.88	-533.99	-597.71	END OF TANGENT
4,853.92	4,767.50	-575.70	-644.40	EOD TO VERTICAL
6,144.86	6,058.44	-575.70	-644.40	KOP (10°/100ft BUR)
6,731.51	6,547.83	-572.72	-369.42	BPI: 613ft FSL & 300ft FWL of Sec 6
7,044.86	6,631.40	-569.50	-71.47	HZ LANDING POINT
16,763.33	6,631.40	-463.71	9,646.42	EPI: 678ft FSL & 300ft FEL of Sec 5
16,863.45	6,631.40	-462.58	9,746.54	BHL: 678ft FSL & 200ft FEL of Sec 5