

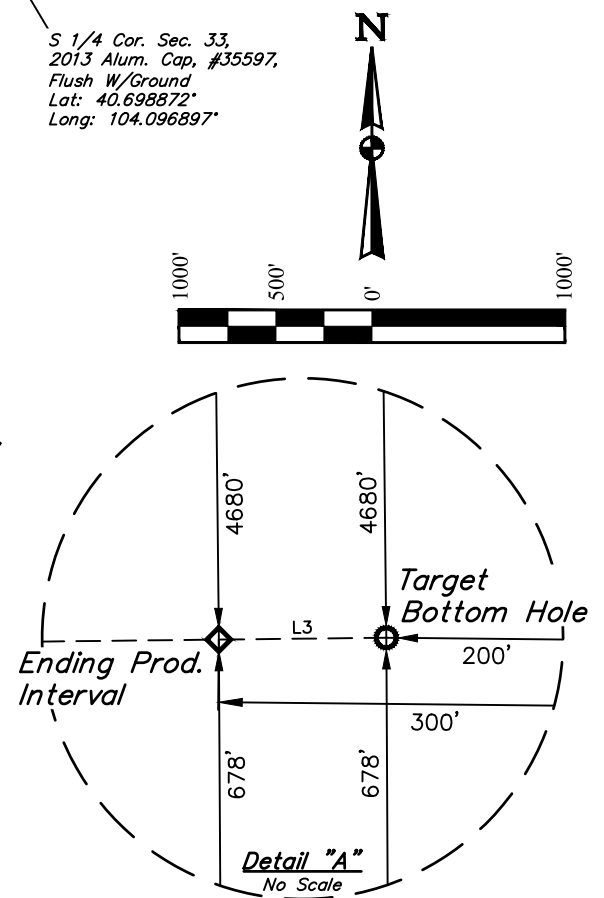
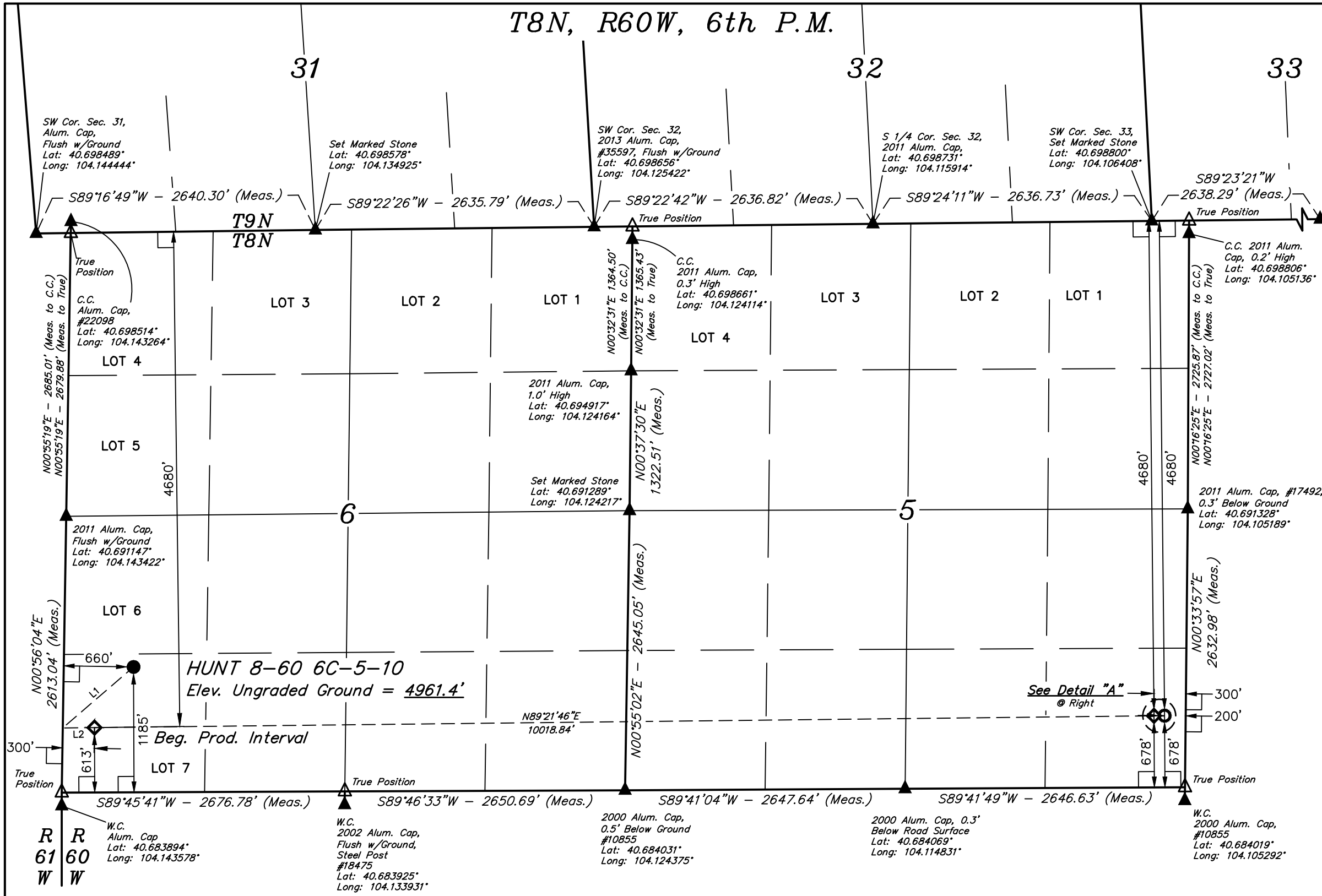
T8N, R60W, 6th P.M.

BISON OIL & GAS II

HUNT 8-60 6C-5-10  
LOT 7, SECTION 6, T8N, R60W, 6th P.M.  
WELD COUNTY, COLORADO

BASIS OF BEARINGS  
BASIS OF BEARINGS IS A G.P.S. OBSERVATION

BASIS OF ELEVATION  
SPOT ELEVATION LOCATED AT THE NORTHEAST CORNER OF SECTION 2, T9N, R61W, 6th P.M., TAKEN FROM THE GROVER SOUTH, QUADRANGLE, COLORADO, WELD COUNTY, 7.5 MINUTE QUAD (TOPOGRAPHICAL MAP) PUBLISHED BY THE UNITED STATES DEPARTMENT OF THE INTERIOR, GEOLOGICAL SURVEY. SAID ELEVATION IS MARKED AS BEING 5043 FEET.



CERTIFICATE OF RECORD  
THIS IS TO CERTIFY THAT THE ABOVE PLAT WAS PREPARED FROM THE NOTES OF ACTUAL SURVEYS MADE BY ME OR UNDER MY SUPERVISION AND THAT THE SAME ARE TRUE AND ACCURATE TO THE BEST OF MY KNOWLEDGE AND BELIEF.  
REGISTERED LAND SURVEYOR  
REGISTRATION NO. 28285  
STATE OF COLORADO  
JAMES FRESHWATER, G.B.

- LEGEND:
- = 90° SYMBOL
  - = PROPOSED WELLHEAD.
  - = PRODUCTION INTERVAL.
  - = TARGET BOTTOM HOLE.
  - = SECTION CORNERS LOCATED. (NAD 83)
  - = SECTION CORNERS RE-ESTABLISHED. (Not Set on Ground.) (NAD 83)

LINE TABLE			SURFACE LOCATION 1185' FSL 660' FWL	BEG. PROD. INTERVAL 4680' FNL 613' FSL 300' FWL	ENDING PROD. INTERVAL 4680' FNL 678' FSL 300' FEL	TARGET BOTTOM HOLE 4680' FNL 678' FSL 200' FEL
LINE	DIRECTION	LENGTH	NAD 83 (SURFACE LOCATION) LATITUDE = 40°41'14.05" (40.687236) LONGITUDE = 104°08'28.06" (104.141128)	NAD 83 (BEG. PROD. INTERVAL) LATITUDE = 40°41'08.39" (40.685664) LONGITUDE = 104°08'32.86" (104.142460)	NAD 83 (ENDING PROD. INTERVAL) LATITUDE = 40°41'09.45" (40.685958) LONGITUDE = 104°06'22.84" (104.106346)	NAD 83 (TARGET BOTTOM HOLE) LATITUDE = 40°41'09.46" (40.685961) LONGITUDE = 104°06'21.55" (104.105985)
L1	S49°15'28"W	883.63'	NAD 27 (SURFACE LOCATION) LATITUDE = 40°41'14.11" (40.687253) LONGITUDE = 104°08'26.24" (104.140622)	NAD 27 (BEG. PROD. INTERVAL) LATITUDE = 40°41'08.44" (40.685679) LONGITUDE = 104°08'31.04" (104.141956)	NAD 27 (ENDING PROD. INTERVAL) LATITUDE = 40°41'09.50" (40.685972) LONGITUDE = 104°06'21.03" (104.105842)	NAD 27 (TARGET BOTTOM HOLE) LATITUDE = 40°41'09.51" (40.685975) LONGITUDE = 104°06'19.73" (104.105481)
L2	N89°21'46"E	300.11'	STATE PLANE NAD 83 (CO. NORTH) N: 1496091.21 E: 3376841.69	STATE PLANE NAD 83 (CO. NORTH) N: 1495512.49 E: 3376481.08	STATE PLANE NAD 83 (CO. NORTH) N: 1495774.78 E: 3386493.94	STATE PLANE NAD 83 (CO. NORTH) N: 1495777.40 E: 3386593.91
L3	N89°21'46"E	100.02'	STATE PLANE NAD 27 (CO. NORTH) N: 496090.01 E: 2376991.46	STATE PLANE NAD 27 (CO. NORTH) N: 495511.31 E: 2376630.85	STATE PLANE NAD 27 (CO. NORTH) N: 495773.45 E: 2386644.01	STATE PLANE NAD 27 (CO. NORTH) N: 495776.07 E: 2386743.97

UINTEAH  
ENGINEERING & LAND SURVEYING

UELS, LLC  
Corporate Office \* 85 South 200 East  
Vernal, UT 84078 \* (435) 789-1017

SURVEYED BY	JAMES FRESHWATER, G.B.	10-24-17	SCALE
DRAWN BY	C.C.	02-28-18	1" = 1000'

WELL LOCATION PLAT