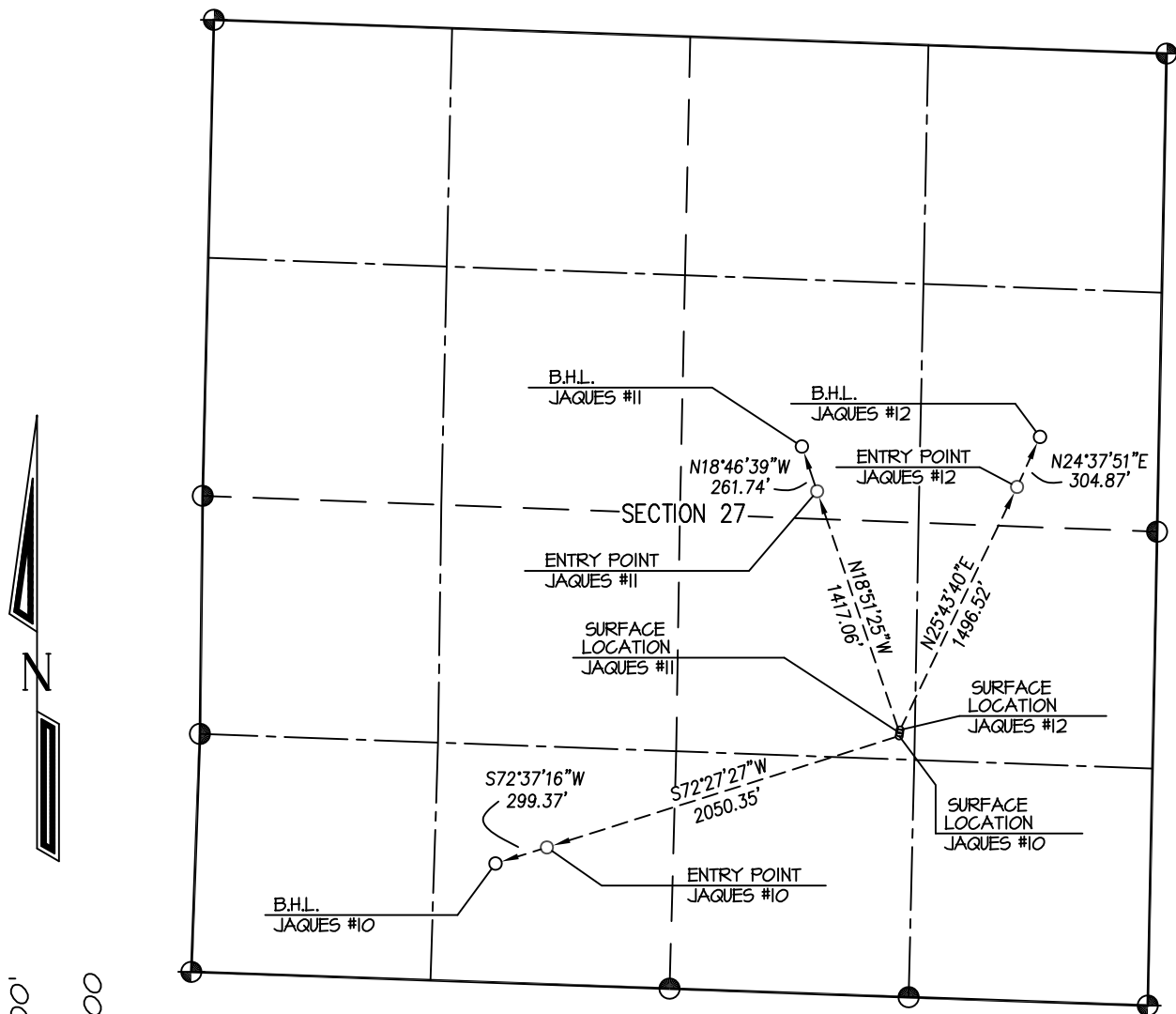


# CATAMOUNT ENERGY PARTNERS: JAKUES #s 10, 11, & 12

## MULTIWELL TRAJECTORY DRAWING



DESCRIPTION	LATITUDE	LONGITUDE	FOOTAGE
JAKUES #10 SURFACE LOCATION	37.07168	107.70038	1446' FSL & 1409' FEL
JAKUES #10 ENTRY POINT	37.06986	107.70102	759' FSL & 1947' FNL
JAKUES #10 BOTTOM HOLE LOCATION	37.06959	107.70800	660' FSL & 1665' FNL
JAKUES #11 SURFACE LOCATION	37.07173	107.70031	1463' FSL & 1407' FEL
JAKUES #11 ENTRY POINT	37.07538	107.70205	2495' FNL & 1891' FEL
JAKUES #11 BOTTOM HOLE LOCATION	37.07605	107.70235	2250' FNL & 1980' FEL
JAKUES #12 SURFACE LOCATION	37.07177	107.70036	1480' FSL & 1405' FEL
JAKUES #12 ENTRY POINT	37.067552	107.69824	2341' FNL & 782' FEL
JAKUES #12 BOTTOM HOLE LOCATION	37.07629	107.69783	2150' FNL & 872' FEL

**LAT/LONG = NAD 83**

SCALE: 1" = 1000'

DATE DRAWN: 2/10/18

NORTHSTAR SURVEYING & MAPPING, INC.

FILE NOCEP24MWP

DRAWN BY: K.R.

CHECKED BY: K.R.