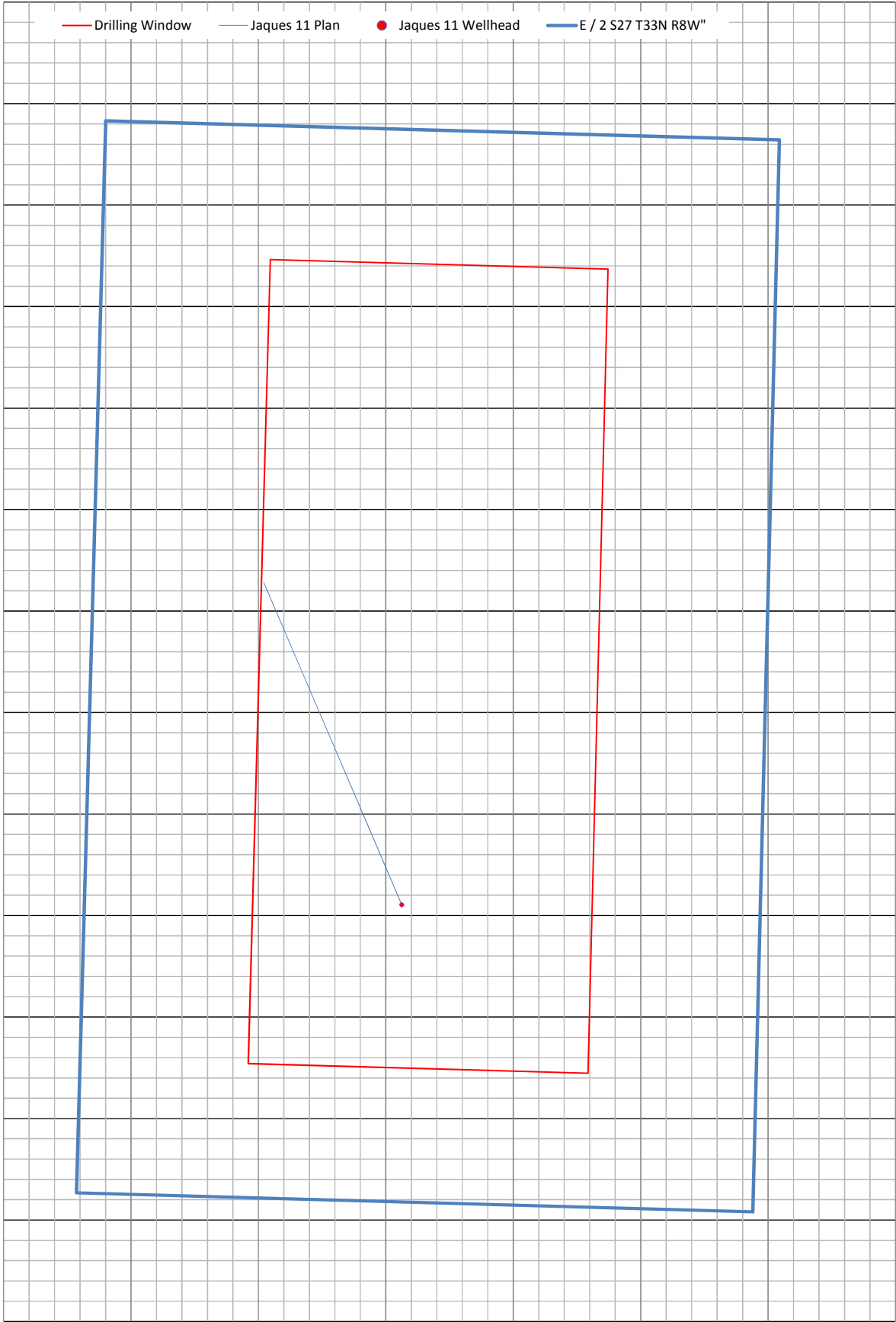


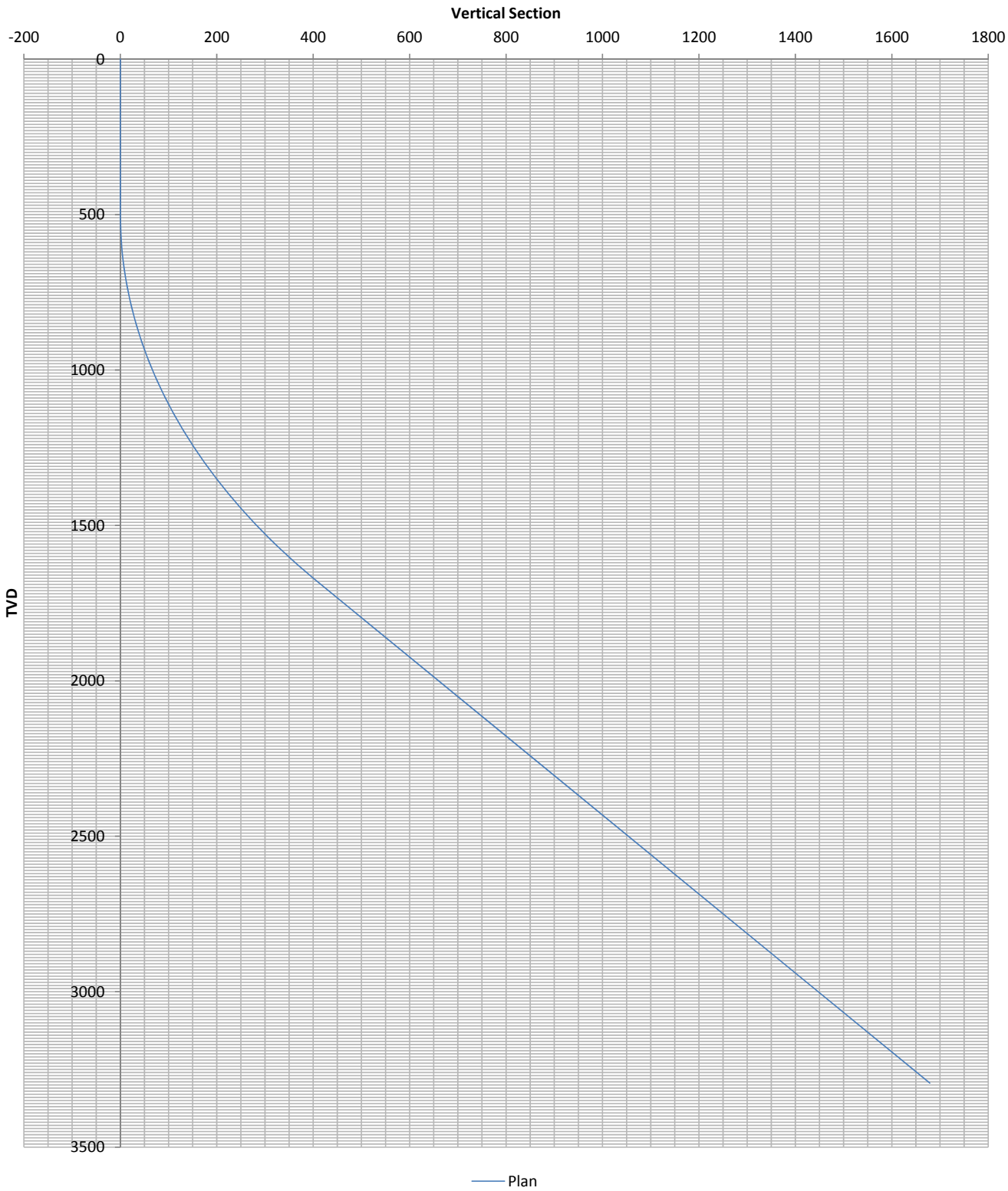
**Ignacio Blanco, Jaques Sec 27
Fruitland Coal
Jaques 11
Plan #1**

**Catamount Energy Partners
Proposal Report**

Section Drawing- Jaques 11



Jaques 11 VS View



Catamount Energy Partners

Proposal Report



Database:	San Juan Basin	Local Coordinate Reference:	Map Coordinates
Company:		TVD Reference:	Mean Sea Level
Project:	Jaques Sec 27	MD Reference:	Jaques 11
Site:	Fruitland Coal	North reference:	Grid North
Well:	Jaques 11	Survey Calculation Method:	Minimum Curvature
Wellbore:			
Proposal:	Plan #1		

Project	Jaques Sec 27		
Map System:	NAD83 Colorado State Planes	System Datum:	Mean Sea Level
Geo Datum:	NAD 1983		
Map Zone:	Southern Zone		

Site	Fruitland Coal		
Site Position:		Northing:	0
From:	Map	Easting:	0
Position Uncertainty:	0ft	Slot Radius:	0in
		Latitude:	33.48902771° N
		Longitude:	115.33027986° W
		Grid Convergence:	-6.0°

Well	Jaques 11		
Well Position:	+N/-S	1,155,052ft	Northing: +1,155,052
	+E/-W	2,358,063ft	Easting: +2,358,063
Position Uncertainty:		1ft	Wellhead Elevation: 6,744ft
			Latitude: 37.07172577° N
			Longitude: 107.70036851° W
			Ground Level: 6,728ft

Magnetics	Model Name	Sample Date	Declination (°)	Dip Angle (°)	Field Strength (nT)
	User Defined	2/2/2018	0.0	0.0	0.0

Proposal	Plan #1		
Audit Notes:			
Version:		Phase:	Tie On Depth: 0ft

Vertical Section:	Depth from TVD (ft)	+N/-S (ft)	+E/-W (ft)	Direction (°)
	0	0	0	341.2

Survey Program		2/5/2018		
From (ft)	To (ft)	Survey (Wellbore)	Tool Name	Description
0	3,826	Plan #1	MWD	MWD

Plan Sections										
Measured Depth (ft)	Inclination (°)	Azimuth (°)	Vertical Depth (ft)	+N/-S (ft)	+E/-W (ft)	Dogleg Rate (°/100ft)	Build Rate (°/100ft)	Turn Rate (°/100ft)	TFO (°)	Target
0	0.0	0.0	0	0	0					
500	0.0	0.0	500	0	0	0.0	0.0	0.0	0.0	
1,774	38.2	341.2	1,681	387	-132	3.0	3.0	0.0	-18.8	
3,826	38.2	341.2	3,294	1,589	-542	0.0	0.0	0.0	0.0	TD

Planned Survey											
Measured Depth (ft)	Incl. (°)	Az. (°)	Vertical Depth (ft)	Sub Sea Depth (ft)	+N/-S (ft)	+E/-W (ft)	Vertical Section (ft)	Closure Distance (ft)	Closure Azimuth (°)	Dogleg Rate (°/100ft)	Comments/ Formations
0	0.0	0.0	0	-6,744	0	0	0	0	0.0	0.0	MWD
100	0.0	0.0	100	-6,644	0	0	0	0	0.0	0.0	
200	0.0	0.0	200	-6,544	0	0	0	0	0.0	0.0	
300	0.0	0.0	300	-6,444	0	0	0	0	0.0	0.0	
400	0.0	0.0	400	-6,344	0	0	0	0	0.0	0.0	
500	0.0	0.0	500	-6,244	0	0	0	0	0.0	0.0	
500	0.0	0.0	500	-6,244	0	0	0	0	0.0	0.0	
600	3.0	341.2	600	-6,144	2	-1	3	3	341.2	3.0	
700	6.0	341.2	700	-6,044	10	-3	10	10	341.2	3.0	
800	9.0	341.2	799	-5,945	22	-8	24	24	341.2	3.0	

Catamount Energy Partners

Proposal Report



Database:	San Juan Basin	Local Coordinate Reference:	Map Coordinates
Company:		TVD Reference:	Mean Sea Level
Project:	Jaques Sec 27	MD Reference:	Jaques 11
Site:	Fruitland Coal	North reference:	Grid North
Well:	Jaques 11	Survey Calculation Method:	Minimum Curvature
Wellbore:			
Proposal:	Plan #1		

Planned Survey											
Measured Depth (ft)	Incl. (°)	Az. (°)	Vertical Depth (ft)	Sub Sea Depth (ft)	+N/-S (ft)	+E/-W (ft)	Vertical Section (ft)	Closure Distance (ft)	Closure Azimuth (°)	Dogleg Rate (°/100ft)	Comments/ Formations
900	12.0	341.2	897	-5,847	39	-13	42	42	341.2	3.0	
1,000	15.0	341.2	994	-5,750	62	-21	65	65	341.2	3.0	
1,100	18.0	341.2	1,090	-5,654	88	-30	93	93	341.2	3.0	
1,200	21.0	341.2	1,184	-5,560	120	-41	127	127	341.2	3.0	
1,300	24.0	341.2	1,277	-5,467	156	-53	165	165	341.2	3.0	
1,400	27.0	341.2	1,367	-5,377	197	-67	208	208	341.2	3.0	
1,500	30.0	341.2	1,455	-5,289	242	-83	256	256	341.2	3.0	
1,600	33.0	341.2	1,540	-5,204	292	-100	308	308	341.2	3.0	
1,700	36.0	341.2	1,623	-5,121	345	-118	365	365	341.2	3.0	
1,734	37.0	341.2	1,650	-5,094	364	-124	385	385	341.2	3.0	Animas
1,774	38.2	341.2	1,681	-5,063	387	-132	409	409	341.2	3.0	
1,800	38.2	341.2	1,702	-5,042	403	-137	425	425	341.2	0.0	
1,900	38.2	341.2	1,781	-4,963	461	-157	487	487	341.2	0.0	
2,000	38.2	341.2	1,859	-4,885	520	-177	549	549	341.2	0.0	
2,097	38.2	341.2	1,935	-4,809	576	-197	609	609	341.2	0.0	Kirtland Shale
2,100	38.2	341.2	1,938	-4,806	578	-197	611	611	341.2	0.0	
2,200	38.2	341.2	2,016	-4,728	637	-217	673	673	341.2	0.0	
2,300	38.2	341.2	2,095	-4,649	695	-237	735	735	341.2	0.0	
2,380	38.2	341.2	2,158	-4,586	742	-253	784	784	341.2	0.0	Farmington SS
2,400	38.2	341.2	2,173	-4,571	754	-257	797	797	341.2	0.0	
2,500	38.2	341.2	2,252	-4,492	812	-277	858	858	341.2	0.0	
2,600	38.2	341.2	2,331	-4,413	871	-297	920	920	341.2	0.0	
2,700	38.2	341.2	2,409	-4,335	930	-317	982	982	341.2	0.0	
2,800	38.2	341.2	2,488	-4,256	988	-337	1,044	1,044	341.2	0.0	
2,900	38.2	341.2	2,566	-4,178	1,047	-357	1,106	1,106	341.2	0.0	
2,986	38.2	341.2	2,634	-4,110	1,097	-374	1,159	1,159	341.2	0.0	Lower Kirtland Shale
3,000	38.2	341.2	2,645	-4,099	1,105	-377	1,168	1,168	341.2	0.0	
3,100	38.2	341.2	2,723	-4,021	1,164	-397	1,230	1,230	341.2	0.0	
3,200	38.2	341.2	2,802	-3,942	1,222	-417	1,291	1,291	341.2	0.0	
3,300	38.2	341.2	2,881	-3,863	1,281	-437	1,353	1,353	341.2	0.0	
3,400	38.2	341.2	2,959	-3,785	1,339	-457	1,415	1,415	341.2	0.0	
3,404	38.2	341.2	2,962	-3,782	1,341	-458	1,417	1,417	341.2	0.0	Upper Fruitland Coal
3,500	38.2	341.2	3,038	-3,706	1,398	-477	1,477	1,477	341.2	0.0	
3,546	38.2	341.2	3,074	-3,670	1,425	-486	1,506	1,506	341.2	0.0	Main Fruitland Coal
3,600	38.2	341.2	3,116	-3,628	1,456	-497	1,539	1,539	341.2	0.0	
3,635	38.2	341.2	3,144	-3,600	1,477	-504	1,561	1,561	341.2	0.0	Pictured Cliffs
3,700	38.2	341.2	3,195	-3,549	1,515	-517	1,601	1,601	341.2	0.0	
3,800	38.2	341.2	3,273	-3,471	1,574	-537	1,663	1,663	341.2	0.0	
3,826	38.2	341.2	3,294	-3,450	1,589	-542	1,679	1,679	341.2	0.0	TD

Targets										
Target Name	Dip Angle (°)	Dip Dir. (°)	TVD (ft)	+N/-S (ft)	+E/-W (ft)	Northing (ft)	Easting (ft)	Latitude		Longitude
-hit/miss target										
-Shape										
TD			3,294	1,589	-542	+1,156,641	+2,357,521	37.07605294° N		107.70235490° W
- proposal hits the target center										
- Point										

Catamount Energy Partners

Proposal Report



Database:	San Juan Basin	Local Coordinate Reference:	Map Coordinates
Company:		TVD Reference:	Mean Sea Level
Project:	Jaques Sec 27	MD Reference:	Jaques 11
Site:	Fruitland Coal	North reference:	Grid North
Well:	Jaques 11	Survey Calculation Method:	Minimum Curvature
Wellbore:			
Proposal:	Plan #1		

Formations					
Measured Depth (ft)	Vertical Depth (ft)	Subsea Depth (ft)	Name	Dip Angle (°)	Dip Direction (°)
1,734	-5,094	-5,094	Animas	0.0	0.0
2,097	-4,809	-4,809	Kirtland Shale	0.0	0.0
2,380	-4,586	-4,586	Farmington SS	0.0	0.0
2,986	-4,110	-4,110	Lower Kirtland Shale	0.0	0.0
3,404	-3,782	-3,782	Upper Fruitland Coal	0.0	0.0
3,546	-3,670	-3,670	Main Fruitland Coal	0.0	0.0
3,635	-3,600	-3,600	Pictured Cliffs	0.0	0.0

Checked By:	Approved By:	Date:
-------------	--------------	-------

Disclaimer Notice

Catamount Energy Partners makes no warranty of any kind with respect to the subject matter included herein or the completeness or accuracy of this document.

Catamount Energy Partners are not responsible for any actions (or lack thereof) taken as a result of relying on or in any way using information contained in this document and in no event shall be liable for any damages resulting from reliance on or use of this information.