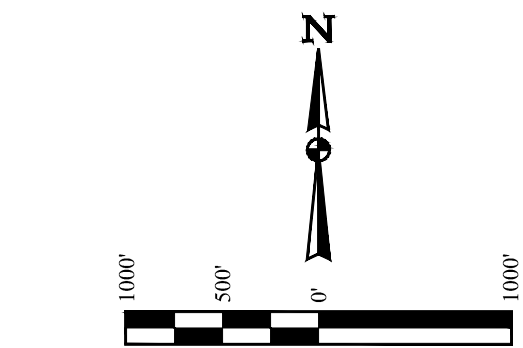
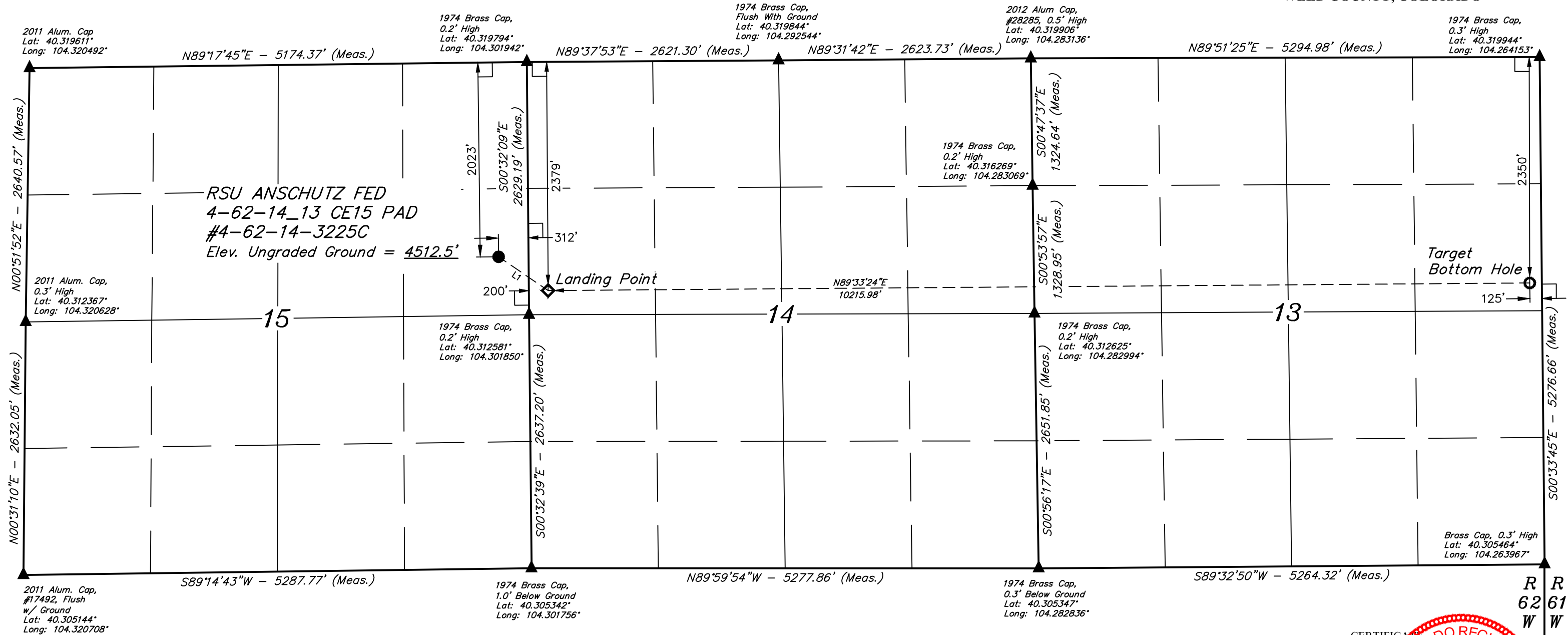


T4N, R62W, 6th P.M.

BILL BARRETT CORPORATION
RSU ANSCHUTZ FED 4-62-14_13 CE15 PAD
#4-62-14-3225C
SE 1/4 NE 1/4, SECTION 15, T4N, R62W, 6th P.M.
WELD COUNTY, COLORADO



- LEGEND:**
- = 90° SYMBOL
 - = PROPOSED WELLHEAD.
 - ◆ = LANDING POINT.
 - = TARGET BOTTOM HOLE.
 - ▲ = SECTION CORNERS LOCATED.

BASIS OF BEARINGS
BASIS OF BEARINGS IS A G.P.S. OBSERVATION

BASIS OF ELEVATION
SPOT ELEVATION LOCATED AT THE NORTHEAST CORNER OF SECTION 24, T5N, R62W, 6th. P.M. TAKEN FROM THE POINT OF ROCKS, QUADRANGLE, COLORADO, WELD COUNTY, 7.5 MINUTE QUAD (TOPOGRAPHIC MAP) PUBLISHED BY THE UNITED STATES DEPARTMENT OF THE INTERIOR, GEOLOGICAL SURVEY. SAID ELEVATION IS MARKED AS BEING 4530 FEET.

LINE TABLE		
LINE	DIRECTION	LENGTH
L1	S55°44'27"E	623.75'

NAD 83 (SURFACE LOCATION)	NAD 83 (LANDING POINT)	NAD 83 (TARGET BOTTOM HOLE)
LATITUDE = 40°18'51.24" (40.314233)	LATITUDE = 40°18'47.77" (40.313269)	LATITUDE = 40°18'48.58" (40.313494)
LONGITUDE = 104°18'10.76" (104.302990)	LONGITUDE = 104°18'04.11" (104.301142)	LONGITUDE = 104°15'52.26" (104.264517)
NAD 27 (SURFACE LOCATION)	NAD 27 (LANDING POINT)	NAD 27 (TARGET BOTTOM HOLE)
LATITUDE = 40°18'51.31" (40.314252)	LATITUDE = 40°18'47.84" (40.313289)	LATITUDE = 40°18'48.65" (40.313514)
LONGITUDE = 104°18'08.94" (104.302482)	LONGITUDE = 104°18'02.28" (104.300633)	LONGITUDE = 104°15'50.44" (104.264011)
STATE PLANE NAD 83 (CO. NORTH)	STATE PLANE NAD 83 (CO. NORTH)	STATE PLANE NAD 83 (CO. NORTH)
N: 1359568.98 E: 3333791.36	N: 1359225.17 E: 3334311.60	N: 1359446.78 E: 3344522.50
STATE PLANE NAD 27 (CO. NORTH)	STATE PLANE NAD 27 (CO. NORTH)	STATE PLANE NAD 27 (CO. NORTH)
N: 359571.38 E: 2333941.57	N: 359227.59 E: 2334461.83	N: 359449.25 E: 2344672.73

PDOP = 1.4

CERTIFICATE OF SURVEY
THIS IS TO CERTIFY THAT THE ABOVE SURVEY WAS PREPARED FROM FIELD NOTES OF ACTUAL SURVEYS MADE BY ME OR UNDER MY SUPERVISION AND THAT THE SAME ARE TRUE AND CORRECT TO THE BEST OF MY KNOWLEDGE AND BELIEF.

REGISTERED LAND SURVEYOR
REGISTRATION NO. 28285
STATE OF COLORADO
01-04-18

REV: 4 01-04-18 D.COX (UPDATE COORDINATES)



UELS, LLC
Corporate Office * 85 South 200 East
Vernal, UT 84078 * (435) 789-1017

SURVEYED BY	DALLAS NIELSEN, B.C.	06-09-15	SCALE
DRAWN BY	K.B.	07-27-15	1" = 1000'

WELL LOCATION PLAT