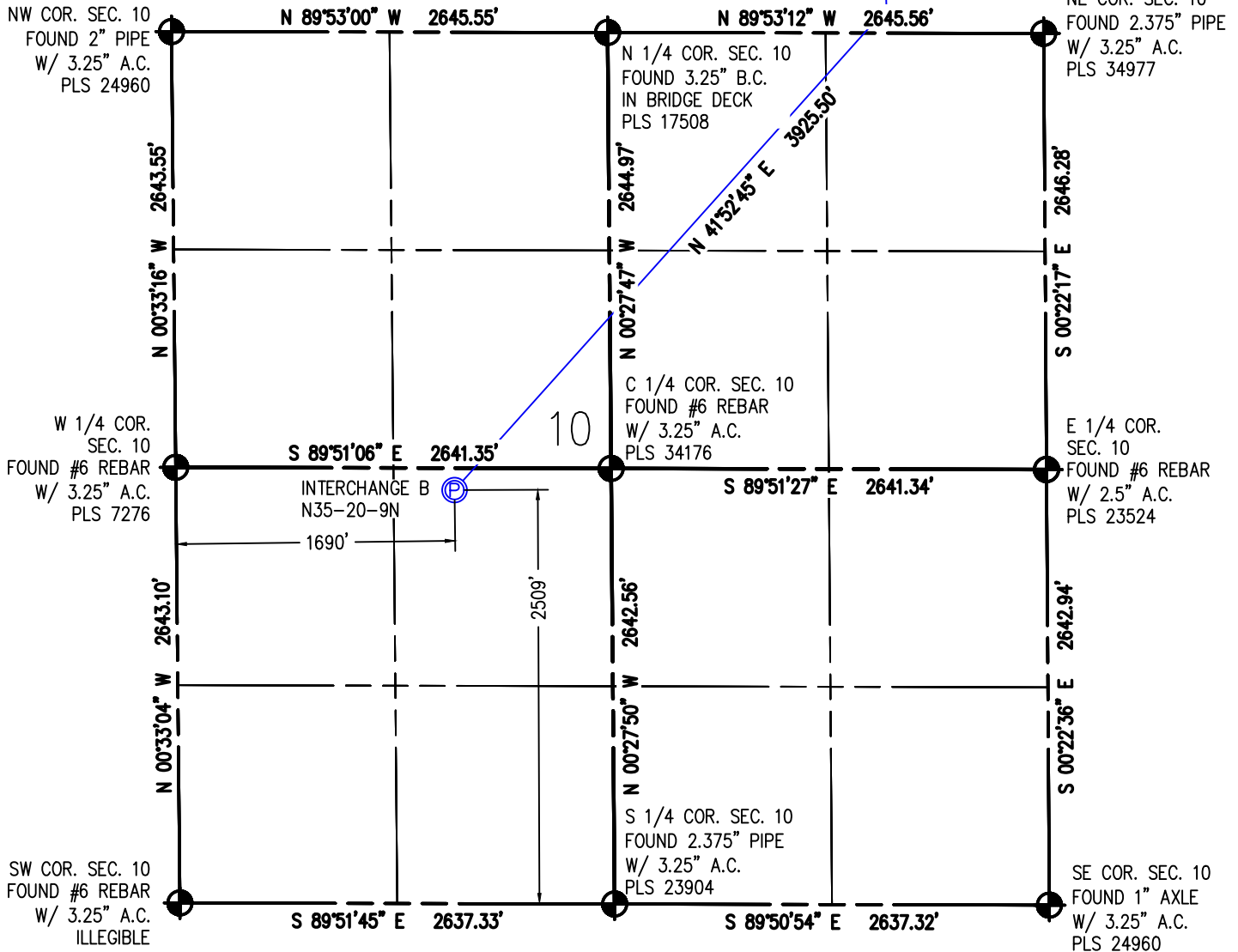


WELL LOCATION PLAT INTERCHANGE B N35-20-9N

NE 1/4 SW 1/4 SEC. 10, T1S, R 68 W, 6TH P.M.

WELL BORE
CONTINUES INTO
SECTION 3
(SHEET 2)



I HEREBY CERTIFY THAT THIS WELL LOCATION CERTIFICATE WAS PREPARED BY ME, OR UNDER MY DIRECT SUPERVISION, THAT THE FIELD WORK WAS COMPLETED ON 9/28/2017, THAT IT IS NOT A LAND SURVEY PLAT OR AN IMPROVEMENT SURVEY PLAT, AND THAT IT IS NOT TO BE RELIED UPON FOR ESTABLISHMENT OF FENCE, BUILDING OR OTHER FUTURE IMPROVEMENT LINES.

AARON A. DEMO
Professional Land Surveyor Registration No. 38285
State of Colorado
FOR AND ON BEHALF OF BASELINE ENGINEERING CORP.

N

0 1000'
Scale 1" = 1000' ft

SURFACE LOCATION
SEC. 10, T1S, R68W
GROUND ELEVATION = 5213.3'
PDOP = 1.4
LATITUDE = 39.979010°
LONGITUDE = -104.991156°
2509' FSL, 1690' FWL
ENTRY POINT LOCATION
SEC. 3, T1S, R68W
LATITUDE = 39.986989°
LONGITUDE = -104.981749°
150' FSL, 955' FEL
BOTTOM HOLE LOCATION
SEC. 34, T1N, R68W
LATITUDE = 40.013627°
LONGITUDE = -104.982578°
460' FNL, 672' FEL

NOTES:

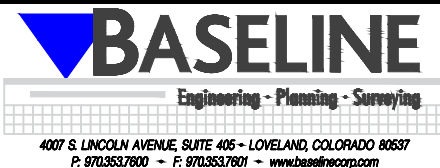
1. ● INDICATES SECTION CORNER
2. ○ INDICATES CALCULATED CORNER
3. (C) INDICATES CALCULATED DIMENSION
4. ELEVATION BASED ON NAVD88 (GEOID12B)
5. BEARINGS DERIVED FROM COLORADO COORDINATE SYSTEM OF 1983 NAD83 ZONE.
6. OPERATOR: TRAVIS WINNICKI
7. IMPROVEMENTS: SEE LOCATION DRAWING FOR ALL VISIBLE IMPROVEMENTS WITHIN 500' OF DISTURBED AREA.
8. WELL FOOTAGES ARE MEASURED AT RIGHT ANGLES TO THE SECTION LINES.

NEAREST CULTURAL ITEMS:

BUILDING: 943' SW
BUILDING UNIT: 1608' W
HIGH OCCUPANCY BUILDING UNIT: 4761' S
DESIGNATED OUTSIDE ACTIVITY AREA: 5280'+
PUBLIC ROAD: 1-25 ON RAMP 519' E
ABOVE GROUND UTILITY: 1676' W
RAILROAD: 5280'+
PROPERTY LINE: 341' E
SURFACE USE: FARMLAND.
NEAREST EXISTING WELL: 607' S

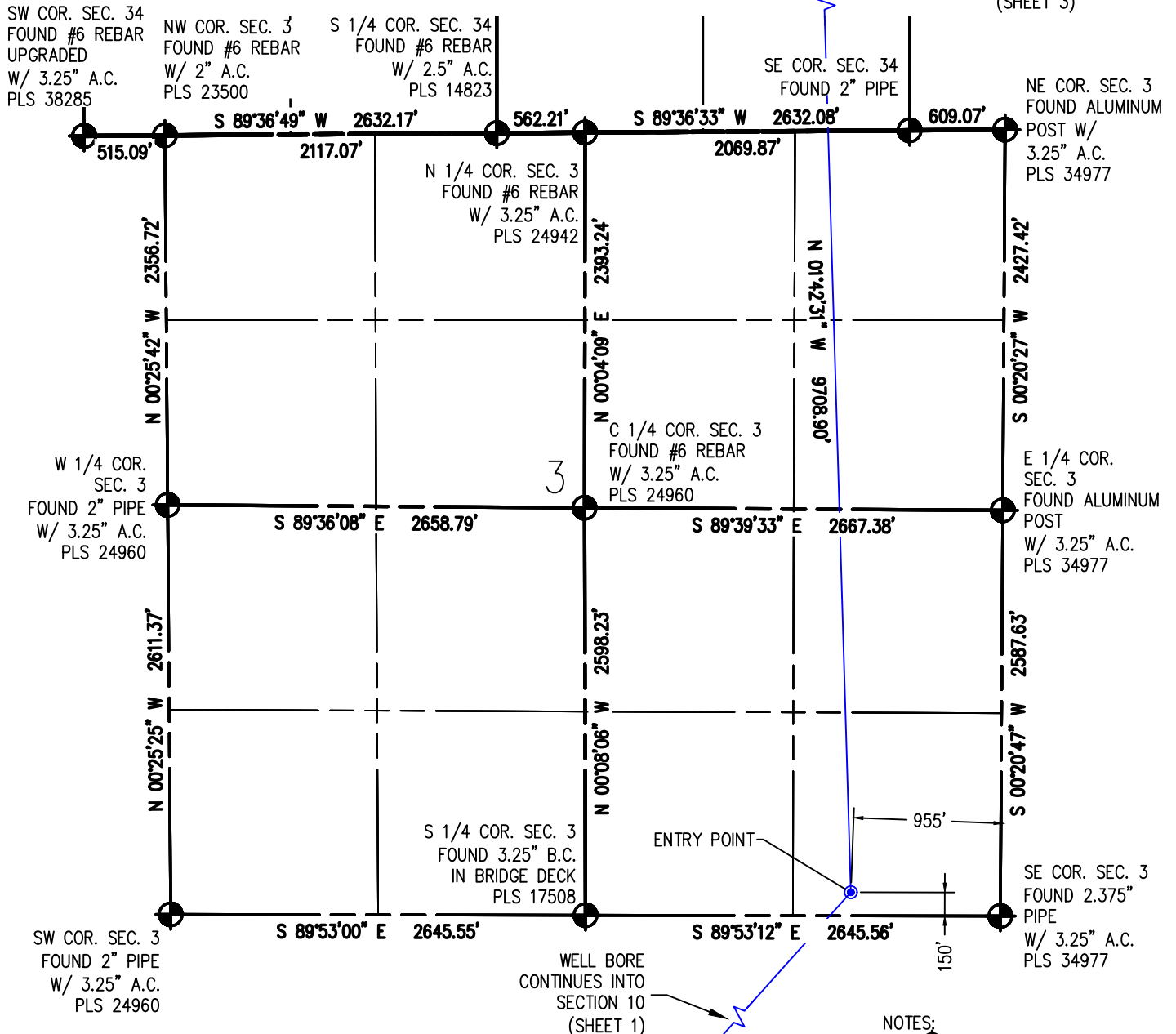


DRAWN BY	RPM	CHECKED BY	AAD
INITIAL SUBMITTAL	1/19/2018	REVISED	N/A
DRAWING SIZE	8.5" X 11"	JOB NO.	EXT01S8BW10-03
SHEET	1 OF 3		



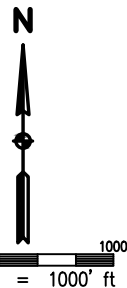
WELL LOCATION PLAT INTERCHANGE B N35-20-9N

NE 1/4 SW 1/4 SEC. 10, T1S, R 68 W, 6TH P.M.



I HEREBY CERTIFY THAT THIS WELL LOCATION CERTIFICATE WAS PREPARED BY ME, OR UNDER MY DIRECT SUPERVISION, THAT THE FIELD WORK WAS COMPLETED ON 9/28/2017, THAT IT IS NOT A LAND SURVEY PLAT OR AN IMPROVEMENT SURVEY PLAT, AND THAT IT IS NOT TO BE RELIED UPON FOR ESTABLISHMENT OF FENCE, BUILDING OR OTHER FUTURE IMPROVEMENT LINES.

AARON A. DEMO
Professional Land Surveyor Registration No. 38285
State of Colorado
FOR AND ON BEHALF OF BASELINE ENGINEERING CORP.



SURFACE LOCATION
SEC. 10, T1S, R68W
GROUND ELEVATION = 5213.3'
PDOP = 1.4
LATITUDE = 39.979010°
LONGITUDE = -104.991156°
2509' FSL, 1690' FWL
ENTRY POINT LOCATION
SEC. 3, T1S, R68W
LATITUDE = 39.986989°
LONGITUDE = -104.981749°
150' FSL, 955' FEL
BOTTOM HOLE LOCATION
SEC. 34, T1N, R68W
LATITUDE = 40.013627°
LONGITUDE = -104.982578°
460' FNL, 672' FEL

NOTES:

1. INDICATES SECTION CORNER
2. INDICATES CALCULATED CORNER
3. (C) INDICATES CALCULATED DIMENSION
4. ELEVATION BASED ON NAVD88 (GEOID12B)
5. BEARINGS DERIVED FROM COLORADO COORDINATE SYSTEM OF 1983 NAD83 ZONE.
6. OPERATOR: TRAVIS WINNICKI
7. IMPROVEMENTS: SEE LOCATION DRAWING FOR ALL VISIBLE IMPROVEMENTS WITHIN 500' OF DISTURBED AREA.
8. WELL FOOTAGES ARE MEASURED AT RIGHT ANGLES TO THE SECTION LINES.

NEAREST CULTURAL ITEMS:

BUILDING: 943' SW
BUILDING UNIT: 1608' W
HIGH OCCUPANCY BUILDING UNIT: 4761' S
DESIGNATED OUTSIDE ACTIVITY AREA: 5280'+
PUBLIC ROAD: 1-25 ON RAMP 519' E
ABOVE GROUND UTILITY: 1676' W
RAILROAD: 5280'+
PROPERTY LINE: 341' E
SURFACE USE: FARMLAND.
NEAREST EXISTING WELL: 607' S



DRAWN BY	RPM	CHECKED BY	AAD
INITIAL SUBMITTAL	1/19/2018	REVISED	N/A
DRAWING SIZE	8.5" X 11"	JOB NO.	EXT01S08W10-03
SHEET	2 OF 3		



WELL LOCATION PLAT INTERCHANGE B N35-20-9N

NE 1/4 SW 1/4 SEC. 10, T1S, R 68 W, 6TH P.M.

N 1/4 COR. SEC. 34
FOUND #6 REB.
W/ 3-1/4" A.C.

NW COR. SEC. 34
FOUND #6 REB.
W/ 3-1/4" A.C.
PLS 13258

W 1/4 COR.
SEC. 34
FOUND #6 REB.
W/ 3-1/4" A.C.
PLS 18482

SW COR. SEC. 34
FOUND #6 REB.
W/ 3-1/4" A.C.
PLS 38285

NW COR. SEC. 3
FOUND #6 REB.
W/ 2" A.C.
PLS 23500

C 1/4 COR. SEC. 34
FOUND #6 REB.
W/ 2-1/2" A.C.

S 1/4 COR. SEC. 34
FOUND #6 REB.
W/ 2-1/2" A.C.
PLS 14823

N 1/4 COR. SEC. 3
FOUND #6 REB.
W/ 3-1/4" A.C.
PLS 24942

WELL BORE
CONTINUES INTO
SECTION 3
(SHEET 2)

NE COR. SEC. 34
FOUND #6 REB.
W/ 2" A.C.

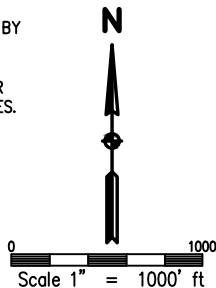
E 1/4 COR.
SEC. 34
FOUND #6 REB.
W/ 3-1/4" A.C.

SE COR. SEC. 34
FOUND #6 REB.
W/ 3-1/4" A.C.
PLS 23027

NE COR. SEC. 3
FOUND AL. POST
W/ 3-1/4" A.C.
PLS 34977

I HEREBY CERTIFY THAT THIS WELL LOCATION CERTIFICATE WAS PREPARED BY ME, OR UNDER MY DIRECT SUPERVISION, THAT THE FIELD WORK WAS COMPLETED ON 9/28/2017, THAT IT IS NOT A LAND SURVEY PLAT OR AN IMPROVEMENT SURVEY PLAT, AND THAT IT IS NOT TO BE RELED UPON FOR ESTABLISHMENT OF FENCE, BUILDING OR OTHER FUTURE IMPROVEMENT LINES.

AARON A. DEMO
Professional Land Surveyor Registration No. 38285
State of Colorado
FOR AND ON BEHALF OF BASELINE ENGINEERING CORP.



SURFACE LOCATION
SEC. 10, T1S, R68W
GROUND ELEVATION = 5213.3'
PDOP = 1.4
LATITUDE = 39.979010°
LONGITUDE = -104.991156°
2509' FSL, 1690' FWL
ENTRY POINT LOCATION
SEC. 3, T1S, R68W
LATITUDE = 39.986989°
LONGITUDE = -104.981749°
150' FSL, 955' FEL
BOTTOM HOLE LOCATION
SEC. 34, T1N, R68W
LATITUDE = 40.013627°
LONGITUDE = -104.982578°
460' FNL, 672' FEL

NOTES:

1. INDICATES SECTION CORNER
2. INDICATES CALCULATED CORNER
3. (C) INDICATES CALCULATED DIMENSION
4. ELEVATION BASED ON NAVD88 (GEOID12B)
5. BEARINGS DERIVED FROM COLORADO COORDINATE SYSTEM OF 1983 NAD83 ZONE.
6. OPERATOR: TRAVIS WINNICKI
7. IMPROVEMENTS: SEE LOCATION DRAWING FOR ALL VISIBLE IMPROVEMENTS WITHIN 500' OF DISTURBED AREA.
8. WELL FOOTAGES ARE MEASURED AT RIGHT ANGLES TO THE SECTION LINES.

NEAREST CULTURAL ITEMS:

BUILDING: 943' SW
BUILDING UNIT: 1608' W
HIGH OCCUPANCY BUILDING UNIT: 4761' S
DESIGNATED OUTSIDE ACTIVITY AREA: 5280'+
PUBLIC ROAD: 1-25 ON RAMP 519' E
ABOVE GROUND UTILITY: 1676' W
RAILROAD: 5280'+
PROPERTY LINE: 341' E
SURFACE USE: FARMLAND.
NEAREST EXISTING WELL: 607' S



DRAWN BY	RPM	CHECKED BY	AAD
INITIAL SUBMITTAL	1/19/2018		
REVISED	N/A		
DRAWING SIZE	8.5" X 11"		
JOB NO.	EXT01S8BW10-03		
SHEET	3 of 3		



4007 S. LINCOLN AVENUE, SUITE 405 - LOVELAND, COLORADO 80537
P: 970.353.7800 - F: 970.353.7801 - www.baselinecorp.com