

WELL LOCATION PLAT UNITED B S16-20-17N

NE1/4 NE1/4 SEC. 9, T1S, R68W, 6TH P.M.

N 1/4 COR. SEC. 9
FOUND 2.5" PIPE
W/ 3.25" A.C.
PLS 24942

NW COR. SEC. 9
FOUND #6 REBAR
W/ 3.25" A.C.
PLS 24942

NE COR. SEC. 9
FOUND 2" PIPE
W/ 3.25" A.C.
PLS 24960

UNITED B
S16-20-17N

S 48°22'26" E
65.74'

ENTRY
POINT

W 1/4 COR. SEC. 9
FOUND #6 REBAR
W/ 3.25" A.C.
PLS 12330

S 89°49'26" W 2612.28'

C 1/4 COR. SEC. 9
FOUND 2.375" PIPE
W/ 3.25" A.C.
PLS 7276

S 89°48'53" W 2605.69'

E 1/4 COR. SEC. 9
FOUND 2" PIPE
W/ 3.25" A.C.
PLS 7276

SW COR. SEC. 9
FOUND #6 REBAR
W/ 3.25" A.C.
PLS 6973

S 89°49'36" W 2606.60'

S 1/4 COR. SEC. 9
FOUND #6 REBAR
W/ 2" A.C.
PLS 25937

S 89°49'30" W 2606.52'

SE COR. SEC. 9
FOUND 2" PIPE
W/ 3.25" A.C.
ILLEGIBLE

WELL BORE CONTINUES INTO
SECTION 16 (SHEET 2)

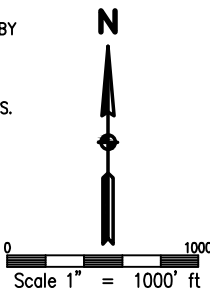
SURFACE LOCATION
SEC. 9, T1S, R68W
GROUND ELEVATION = 5253.9'
PDOP = 1.2
LATITUDE = 39.985479°
LONGITUDE = -105.000486°
436' FNL, 916' FEL
ENTRY POINT LOCATION
SEC. 9, T1S, R68W
LATITUDE = 39.985358°
LONGITUDE = -105.000312°
480' FNL, 867' FEL
BOTTOM HOLE LOCATION
SEC. 16, T1S, R68W
LATITUDE = 39.958916°
LONGITUDE = -105.000123°
460' FSL, 863' FEL

NOTES:

1. INDICATES SECTION CORNER
2. INDICATES CALCULATED CORNER
3. (C) INDICATES CALCULATED DIMENSION
4. ELEVATION BASED ON NAVD88 (GEOID12B)
5. BEARINGS DERIVED FROM COLORADO COORDINATE SYSTEM OF 1983 NORTH ZONE.
6. OPERATOR: TRAVIS WINNICKI
7. IMPROVEMENTS: SEE LOCATION DRAWING FOR ALL VISIBLE IMPROVEMENTS WITHIN 500' OF DISTURBED AREA.
8. WELL FOOTAGES ARE MEASURED AT RIGHT ANGLES TO THE SECTION LINES.

I HEREBY CERTIFY THAT THIS WELL LOCATION CERTIFICATE WAS PREPARED BY ME, OR UNDER MY DIRECT SUPERVISION, THAT THE FIELD WORK WAS COMPLETED ON 10/19/2017, THAT IT IS NOT A LAND SURVEY PLAT OR AN IMPROVEMENT SURVEY PLAT, AND THAT IT IS NOT TO BE RELIED UPON FOR ESTABLISHMENT OF FENCE, BUILDING OR OTHER FUTURE IMPROVEMENT LINES.

AARON A. DEMO
Professional Land Surveyor Registration No. 38285
State of Colorado
FOR AND ON BEHALF OF BASELINE ENGINEERING CORP.

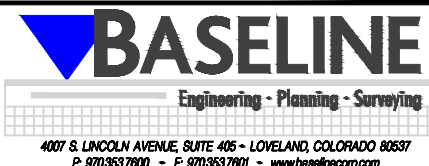


NEAREST CULTURAL ITEMS:

BUILDING: 1239' NE
BUILDING UNIT: 1137' NE
HIGH OCCUPANCY BUILDING UNIT: 5280'+
DESIGNATED OUTSIDE ACTIVITY AREA: 5280'+
PUBLIC ROAD: NORTHWEST PARKWAY 435' S
ABOVE GROUND UTILITY: 399' N
RAILROAD: 5280'+
PROPERTY LINE: 331' W
SURFACE USE: GRASSLAND.
NEAREST EXISTING WELL: NORDSTROM 1-9 1296' SE



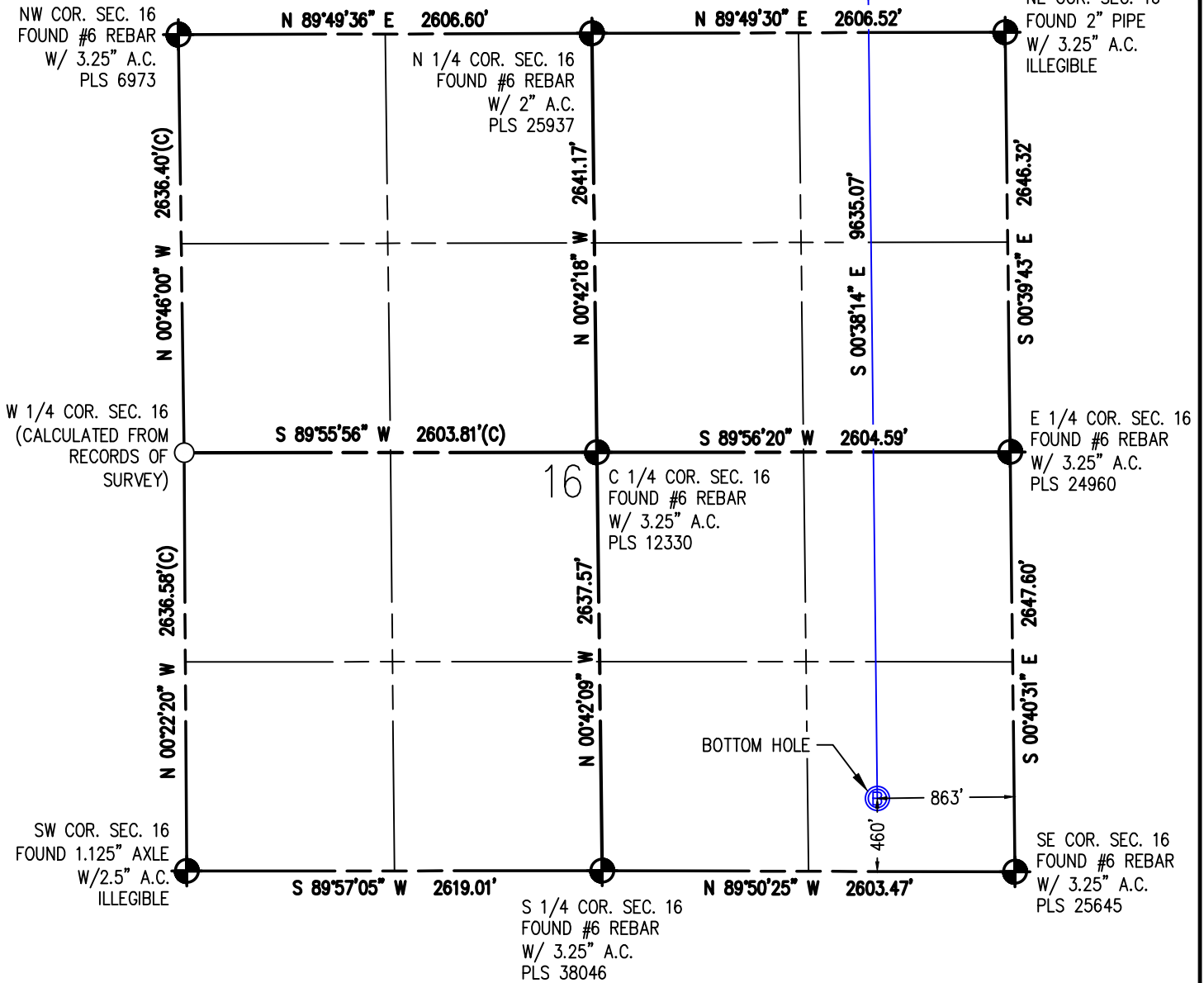
DRAWN BY DAM	CHECKED BY AAD
INITIAL SUBMITTAL 1/19/2018	
REVISED NA	
DRAWING SIZE 8.5" X 11"	
JOB NO. EXT01S68W09-03	
SHEET 1 OF 2	



WELL LOCATION PLAT UNITED B S16-20-17N

NE1/4 NE1/4 SEC. 9, T1S, R68W, 6TH P.M.

WELL BORE CONTINUES INTO
SECTION 9 (SHEET 1)



I HEREBY CERTIFY THAT THIS WELL LOCATION CERTIFICATE WAS PREPARED BY ME, OR UNDER MY DIRECT SUPERVISION, THAT THE FIELD WORK WAS COMPLETED ON 10/19/2017, THAT IT IS NOT A LAND SURVEY PLAT OR AN IMPROVEMENT SURVEY PLAT, AND THAT IT IS NOT TO BE RELIED UPON FOR ESTABLISHMENT OF FENCE, BUILDING OR OTHER FUTURE IMPROVEMENT LINES.

AARON A. DEMO
Professional Land Surveyor Registration No. 38285
State of Colorado
FOR AND ON BEHALF OF BASELINE ENGINEERING CORP.

N

0 1000'
Scale 1" = 1000' ft

SURFACE LOCATION
SEC. 9, T1S, R68W
GROUND ELEVATION = 5253.9'
PDOP = 1.2
LATITUDE = 39.985479"
LONGITUDE = -105.000486"
436' FNL, 916' FEL
ENTRY POINT LOCATION
SEC. 9, T1S, R68W
LATITUDE = 39.985358"
LONGITUDE = -105.000312"
480' FNL, 867' FEL
BOTTOM HOLE LOCATION
SEC. 16, T1S, R68W
LATITUDE = 39.958916"
LONGITUDE = -105.000123"
460' FSL, 863' FEL

NOTES:

1. INDICATES SECTION CORNER
2. INDICATES CALCULATED CORNER
3. (C) INDICATES CALCULATED DIMENSION
4. ELEVATION BASED ON NAVD88 (GEOID12B)
5. BEARINGS DERIVED FROM COLORADO COORDINATE SYSTEM OF 1983 NORTH ZONE.
6. OPERATOR: TRAVIS WINNICKI
7. IMPROVEMENTS: SEE LOCATION DRAWING FOR ALL VISIBLE IMPROVEMENTS WITHIN 500' OF DISTURBED AREA.
8. WELL FOOTAGES ARE MEASURED AT RIGHT ANGLES TO THE SECTION LINES.

NEAREST CULTURAL ITEMS:

BUILDING: 1239' NE
BUILDING UNIT: 1137' NE
HIGH OCCUPANCY BUILDING UNIT: 5280'+
DESIGNATED OUTSIDE ACTIVITY AREA: 5280'+
PUBLIC ROAD: NORTHWEST PARKWAY 435' S
ABOVE GROUND UTILITY: 399' N
RAILROAD: 5280'+
PROPERTY LINE: 331' W
SURFACE USE: GRASSLAND.
NEAREST EXISTING WELL: NORDSTROM 1-9 1296' SE



DRAWN BY
DAM

CHECKED BY
AAD

INITIAL SUBMITTAL 1/19/2018
REVISED NA
DRAWING SIZE 8.5" X 11"
JOB NO. EXT01S68W09-03
SHEET 2 OF 2

BASELINE
Engineering - Planning - Surveying
4007 S. LINCOLN AVENUE, SUITE 405 • LOVELAND, COLORADO 80537
P: 970.363.7800 • F: 970.363.7801 • www.baselinecorp.com