

WELL LOCATION PLAT UNITED B S16-20-14N

NE1/4 NE1/4 SEC. 9, T1S, R68W, 6TH P.M.

N 1/4 COR. SEC. 9

FOUND 2.5" PIPE

W/ 3.25" A.C.

PLS 24942

NW COR. SEC. 9
FOUND #6 REBAR
W/ 3.25" A.C.
PLS 24942

NE COR. SEC. 9
FOUND 2" PIPE
W/ 3.25" A.C.
PLS 24960

ENTRY
POINT

UNITED B
S16-20-14N

W 1/4 COR. SEC. 9
FOUND #6 REBAR
W/ 3.25" A.C.
PLS 12330

E 1/4 COR. SEC. 9
FOUND 2" PIPE
W/ 3.25" A.C.
PLS 7276

C 1/4 COR. SEC. 9
FOUND 2.375" PIPE
W/ 3.25" A.C.
PLS 7276

S 1/4 COR. SEC. 9
FOUND #6 REBAR
W/ 2" A.C.
PLS 25937

SW COR. SEC. 9
FOUND #6 REBAR
W/ 3.25" A.C.
PLS 6973

SE COR. SEC. 9
FOUND 2" PIPE
W/ 3.25" A.C.
ILLEGIBLE

WELL BORE CONTINUES INTO
SECTION 16 (SHEET 2)

I HEREBY CERTIFY THAT THIS WELL LOCATION CERTIFICATE WAS PREPARED BY ME, OR UNDER MY DIRECT SUPERVISION, THAT THE FIELD WORK WAS COMPLETED ON 10/19/2017, THAT IT IS NOT A LAND SURVEY PLAT OR AN IMPROVEMENT SURVEY PLAT, AND THAT IT IS NOT TO BE RELIED UPON FOR ESTABLISHMENT OF FENCE, BUILDING OR OTHER FUTURE IMPROVEMENT LINES.

AARON A. DEMO
Professional Land Surveyor Registration No. 38285
State of Colorado
FOR AND ON BEHALF OF BASELINE ENGINEERING CORP.

N

Scale 1" = 1000' ft

SURFACE LOCATION
SEC. 9, T1S, R68W
GROUND ELEVATION = 5254.5'
PDOP = 1.2

LATITUDE = 39.985334°
LONGITUDE = -105.000527°
489' FNL, 928' FEL

ENTRY POINT LOCATION

SEC. 9, T1S, R68W
LATITUDE = 39.985362°
LONGITUDE = -105.003095°
480' FNL, 1647' FEL

BOTTOM HOLE LOCATION

SEC. 16, T1S, R68W
LATITUDE = 39.958934°
LONGITUDE = -105.002907°
460' FSL, 1643' FEL

NOTES:

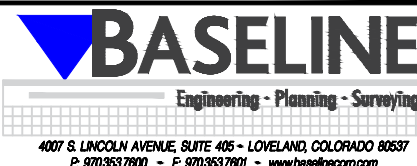
1. INDICATES SECTION CORNER
2. INDICATES CALCULATED CORNER
3. (C) INDICATES CALCULATED DIMENSION
4. ELEVATION BASED ON NAVD88 (GEOID12B)
5. BEARINGS DERIVED FROM COLORADO COORDINATE SYSTEM OF 1983 NORTH ZONE.
6. OPERATOR: TRAVIS WINNICKI
7. IMPROVEMENTS: SEE LOCATION DRAWING FOR ALL VISIBLE IMPROVEMENTS WITHIN 500' OF DISTURBED AREA.
8. WELL FOOTAGES ARE MEASURED AT RIGHT ANGLES TO THE SECTION LINES.

NEAREST CULTURAL ITEMS:

BUILDING: 1278' NE
BUILDING UNIT: 1174' NE
HIGH OCCUPANCY BUILDING UNIT: 5280'+
DESIGNATED OUTSIDE ACTIVITY AREA: 5280'+
PUBLIC ROAD: NORTHWEST PARKWAY 381' S
ABOVE GROUND UTILITY: 452' N
RAILROAD: 5280'+
PROPERTY LINE: 319' W
SURFACE USE: GRASSLAND.
NEAREST EXISTING WELL: NORDSTROM 1-9 1247' SE



DRAWN BY DAM	CHECKED BY AAD
INITIAL SUBMITTAL 1/19/2018	
REVISED NA	
DRAWING SIZE 8.5" X 11"	
JOB NO. EXT01S68W09-03	
SHEET 1 OF 2	

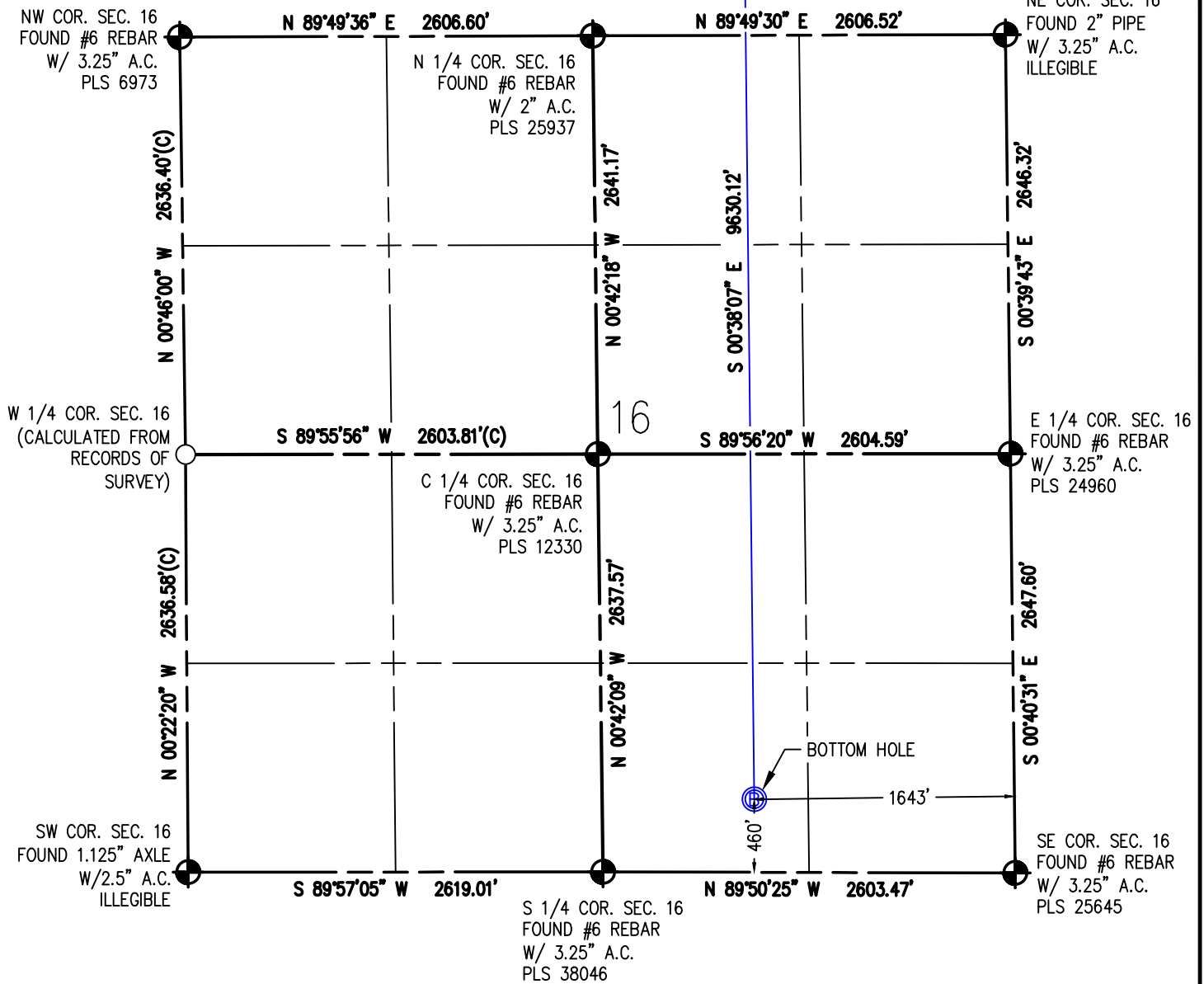


4007 S. LINCOLN AVENUE, SUITE 405 • LOVELAND, COLORADO 80537
P: 970.363.7800 • F: 970.363.7801 • www.baselinecorp.com

WELL LOCATION PLAT UNITED B S16-20-14N

NE1/4 NE1/4 SEC. 9, T1S, R68W, 6TH P.M.

WELL BORE CONTINUES INTO
SECTION 9 (SHEET 1)



I HEREBY CERTIFY THAT THIS WELL LOCATION CERTIFICATE WAS PREPARED BY ME, OR UNDER MY DIRECT SUPERVISION, THAT THE FIELD WORK WAS COMPLETED ON 10/19/2017, THAT IT IS NOT A LAND SURVEY PLAT OR AN IMPROVEMENT SURVEY PLAT, AND THAT IT IS NOT TO BE RELIED UPON FOR ESTABLISHMENT OF FENCE, BUILDING OR OTHER FUTURE IMPROVEMENT LINES.

AARON A. DEMO
Professional Land Surveyor Registration No. 38285
State of Colorado
FOR AND ON BEHALF OF BASELINE ENGINEERING CORP.

N

0 1000'
Scale 1" = 1000' ft

SURFACE LOCATION
SEC. 9, T1S, R68W
GROUND ELEVATION = 5254.5'
PDOP = 1.2
LATITUDE = 39.985334°
LONGITUDE = -105.000527°
489' FNL, 928' FEL
ENTRY POINT LOCATION
SEC. 9, T1S, R68W
LATITUDE = 39.985362°
LONGITUDE = -105.003095°
480' FNL, 1647' FEL
BOTTOM HOLE LOCATION
SEC. 16, T1S, R68W
LATITUDE = 39.958934°
LONGITUDE = -105.002907°
460' FSL, 1643' FEL

NOTES:

1. INDICATES SECTION CORNER
2. INDICATES CALCULATED CORNER
3. (C) INDICATES CALCULATED DIMENSION
4. ELEVATION BASED ON NAVD88 (GEOID12B)
5. BEARINGS DERIVED FROM COLORADO COORDINATE SYSTEM OF 1983 NORTH ZONE.
6. OPERATOR: TRAVIS WINNICKI
7. IMPROVEMENTS: SEE LOCATION DRAWING FOR ALL VISIBLE IMPROVEMENTS WITHIN 500' OF DISTURBED AREA.
8. WELL FOOTAGES ARE MEASURED AT RIGHT ANGLES TO THE SECTION LINES.

NEAREST CULTURAL ITEMS:

BUILDING: 1278' NE
BUILDING UNIT: 1174' NE
HIGH OCCUPANCY BUILDING UNIT: 5280'+
DESIGNATED OUTSIDE ACTIVITY AREA: 5280'+
PUBLIC ROAD: NORTHWEST PARKWAY 381' S
ABOVE GROUND UTILITY: 452' N
RAILROAD: 5280'+
PROPERTY LINE: 319' W
SURFACE USE: GRASSLAND.
NEAREST EXISTING WELL: NORDSTROM 1-9 1247' SE



DRAWN BY DAM	CHECKED BY AAD
INITIAL SUBMITTAL 1/19/2018	
REVISED NA	
DRAWING SIZE 8.5" X 11"	
JOB NO. EXT01S68W09-03	
SHEET 2 OF 2	

BASELINE
Engineering - Planning - Surveying
4007 S. LINCOLN AVENUE, SUITE 405 • LOVELAND, COLORADO 80537
P: 970.363.7800 • F: 970.363.7801 • www.baselinecorp.com