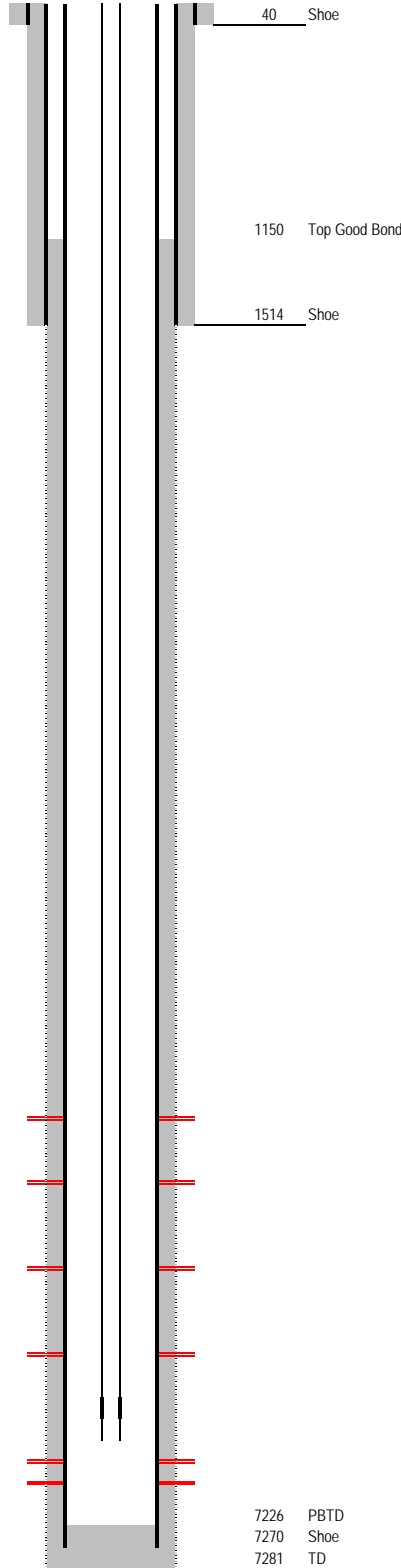


Laramie Energy

Current Wellbore Diagram

Not to Scale

Geological Tops	Depth
Wastch G	1819
Base Wasatch	3470
Top Mesaverde	3561
Ohio Creek	3561
Top Gas	5254
Cameo	5959
Rollins	6362
Cozzette	6770
Corcoran	6969



Well Name Hawkins Ranch 10-7
 API 05-077-09494-00
 Surface Location 2417 FSL & 1357 FEL NESE SEC10 T10S R94W
 GPS Coordinates Lat 39.204315 Long -107.863605
 Bottom Hole Loc 2124 FSL & 2026 FEL NESE SEC10 T10S R94W
 Field Plateau State ID # 69300
 County, State Mesa, Colorado
 Spud Date 4/28/2008
 Completion Date 11/11/2008
 Diagram Date 3/8/2018
 KB Elevation 7351
 KB 15
 GL Elevation 7336

Hole	24"
Conductor	16" @ 40' GL
Cement	4 yds redimix concrete to surface

Surface Hole	12.25" @ 1515
Casing	8-5/8" 32# J55 STC @ 1514
Cement	Lead: 220 sx VersaCem @ 12.3 ppg, yield 2.38 = 93.3 bbls Tail: 200 sx SwiftCem @ 14.2 ppg, yield 1.43 = 50.9 bbls
TOC	SURFACE

Production Hole	7281
Casing	4-1/2" 11.6# I80 LTC @ 7270
Cement	Lead: 460 sx EconoCem @ 11.0 ppg, yield 2.75 = 225 bbls Tail: 450 sx VariCem @ 13.1 ppg, yield 1.57 = 125.8 bbls
TOC	210
Top Good Bond	1150 CBL dated 8/23/2008

Tubing	2-3/8" 4.7# J55 @ 6544
--------	------------------------

Perforations	WF / Cameo	5203-6332	11/11/2008
	Cozzette	6832-6878	11/11/2008
	Corcoran	6984-6986	11/11/2008

7226 PBD
 7270 Shoe
 7281 TD

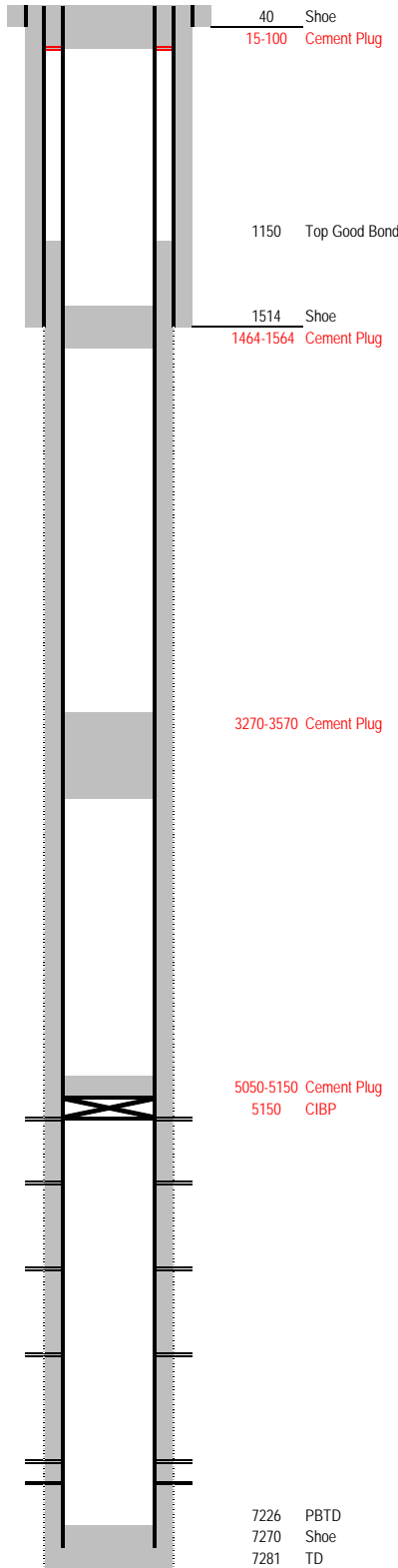
7229 TVD

Laramie Energy

Proposed P&A Wellbore Diagram

Not to Scale

Geological Tops	Depth
Wastch G	1819
Base Wasatch	3470
Top Mesaverde	3561
Ohio Creek	3561
Top Gas	5254
Cameo	5959
Rollins	6362
Cozzette	6770
Corcoran	6969



Well Name Hawkins Ranch 10-7
API 05-077-09494-00
Surface Location 2417 FSL & 1357 FEL NESE SEC10 T10S R94W
GPS Coordinates Lat 39.204315 Long -107.863605
Bottom Hole Loc 2124 FSL & 2026 FEL NESE SEC10 T10S R94W
Field Plateau State ID # 69300
County, State Mesa, Colorado
Spud Date 4/28/2008
Completion Date 11/11/2008
Diagram Date 3/8/2018
KB Elevation 7351
KB 15
GL Elevation 7336

Hole	24"
Conductor	16" @ 40' GL
Cement	4 yds redimix concrete to surface

Surface Hole	12.25" @ 1515
Casing	8-5/8" 32# J55 STC @ 1514
Cement	Lead: 220 sx VersaCem @ 12.3 ppg, yield 2.38 = 93.3 bbls Tail: 200 sx SwiftCem @ 14.2 ppg, yield 1.43 = 50.9 bbls
TOC	SURFACE

Production Hole	7281
Casing	4-1/2" 11.6# 180 LTC @ 7270
Cement	Lead: 460 sx EconoCem @ 11.0 ppg, yield 2.75 = 225 bbls Tail: 450 sx VariCem @ 13.1 ppg, yield 1.57 = 125.8 bbls
TOC	210
Top Good Bond	1150 CBL dated 8/23/2008

Perforations	WF / Cameo	5203-6332	11/11/2008
	Cozzette	6832-6878	11/11/2008
	Corcoran	6984-6986	11/11/2008

7229 TVD