

Extraction Oil & Gas  
Project: Weld County, CO (NAD83)  
Site: TROTT Pad  
Well: TROTT 8E-10-17N  
Wellbore: Wellbore #1  
Plan: Plan #2 (TROTT 8E-10-17N/Wellbore #1)  
P 346

WELL DETAILS: TROTT 8E-10-17N

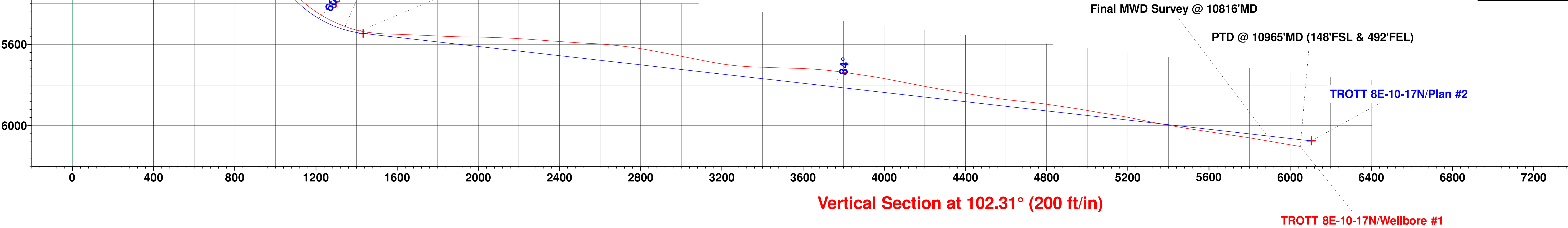
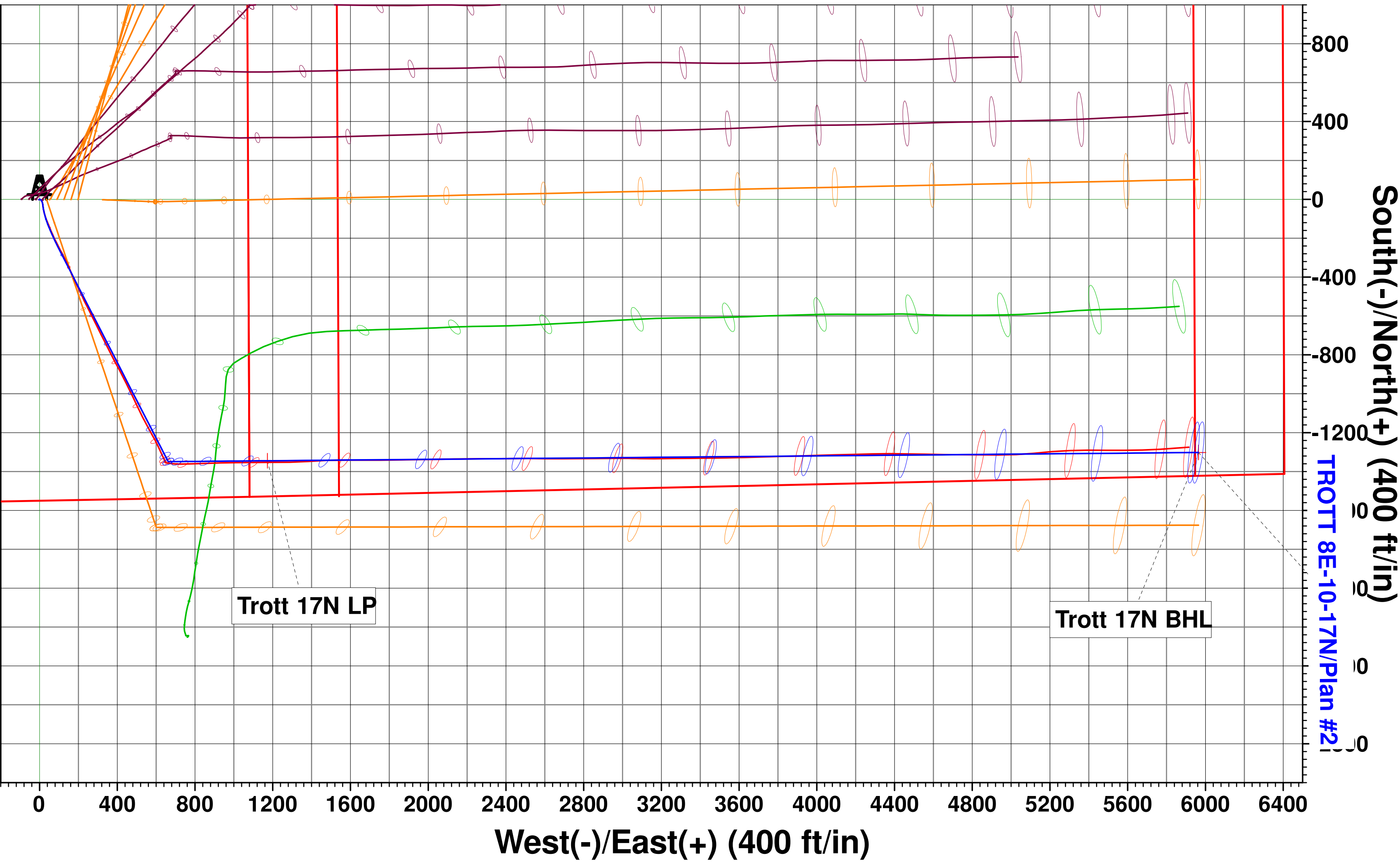
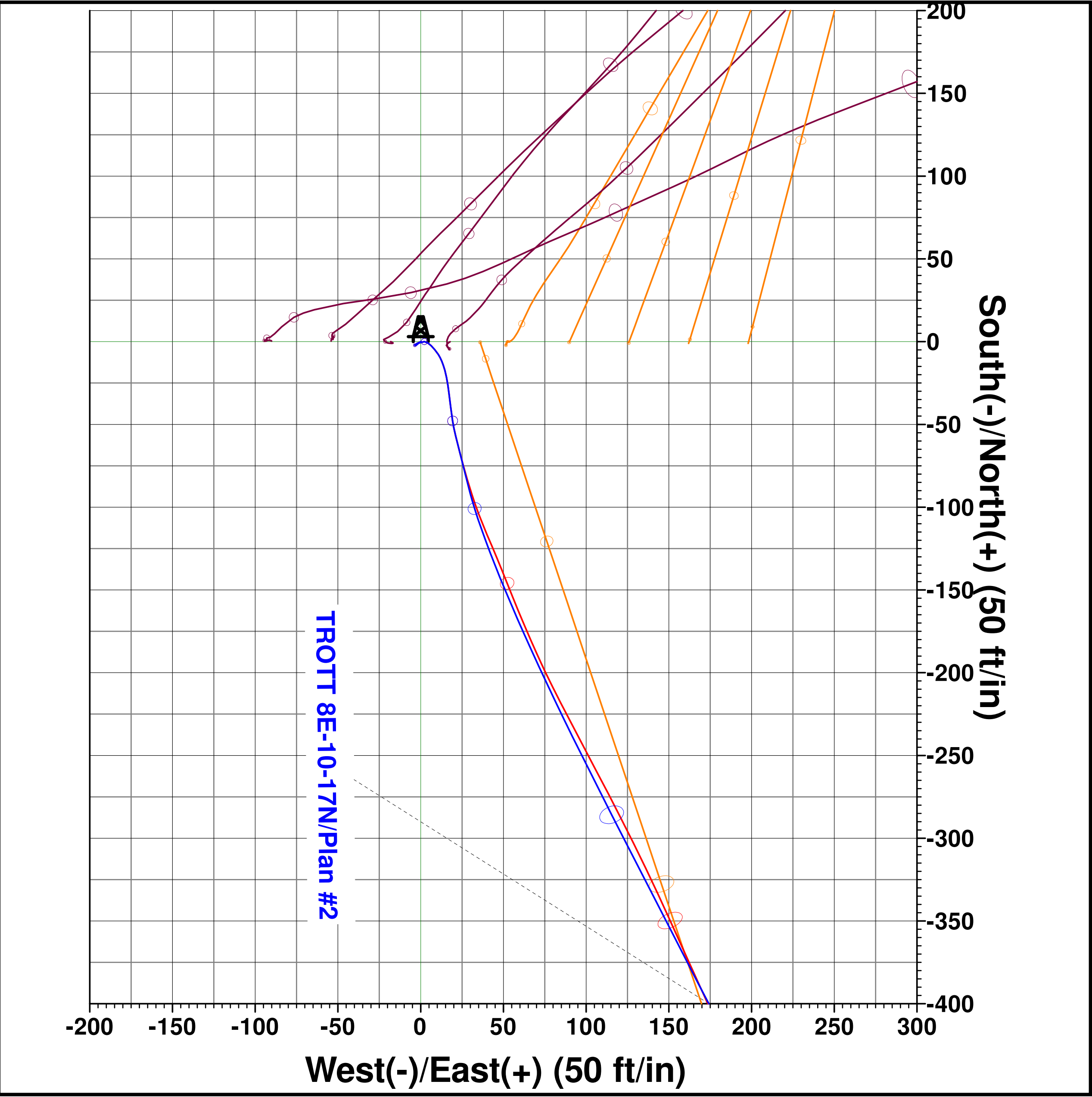
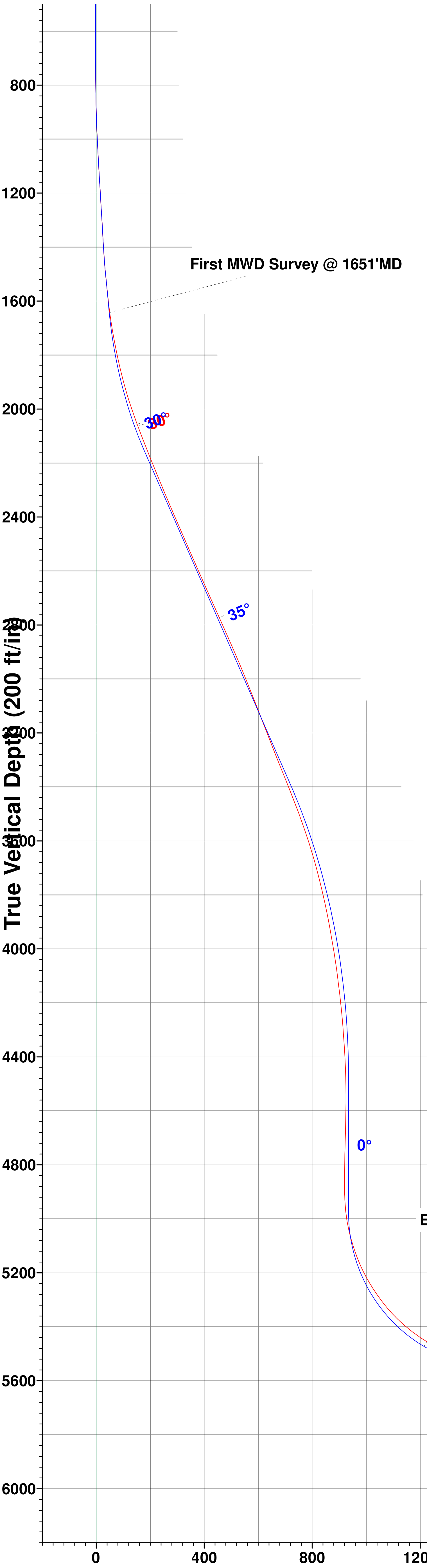
Ground Elevation:: 5035.00  
RKB Elevation: KB=25' @ 5060.00ft (P 346)  
Rig Name: P 346

Northing 1361363.2700      Easting 3128030.0400      Latitude 40.324433      Longitude -105.040814



Planned Section Details

Sec	MD	Inc	Azi	TVD	+N/-S	+E/-W	Dleg	TFace	VSect
1	1539.00	11.95	165.89	1533.31	-67.42	23.81	0.00	0.00	37.64
2	1639.00	11.95	165.89	1631.14	-87.50	28.86	0.00	0.00	46.86
3	2214.73	34.53	152.79	2157.02	-293.18	119.22	4.00	-19.18	179.01
4	3716.17	34.53	152.79	3394.00	-1050.00	508.40	0.00	0.00	720.65
5	4867.08	0.00	0.00	4476.51	-1349.17	662.24	3.00	-180.00	934.76
6	5367.08	0.00	0.00	4976.51	-1349.17	662.24	0.00	0.00	934.76
7	6204.09	83.70	89.49	5546.01	-1344.63	1172.31	10.00	89.49	1432.13
8	11025.10	83.70	89.49	6075.00	-1301.98	5964.02	0.00	0.00	6104.48



PROJECT DETAILS: Weld County, CO (NAD83)  
Geodetic System: US State Plane 1983  
Datum: North American Datum 1983  
Ellipsoid: GRS 1980  
Zone: Colorado Northern Zone  
System Datum: Ground Level  
Local North: True

