

OPERATOR: **Extraction Oil & Gas**

WELL NAME: **Trott 8E-10-7C**

FIELD NAME: DJ Basin - Wattenberg

DRILLING RIG: Patterson 346

API #: 05-123-45731

LAT/LONG: 40.324434, -105.041008

SURFACE HOLE: NESE S7-T4N-R68W, 1551' FSL, 1146' FEL

BOTTOM HOLE: S8-T4N-R68W, 2180' FSL, 460' FEL

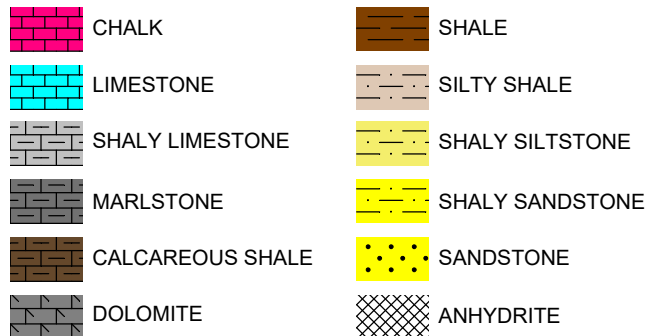


Earth Science Agency, LLC

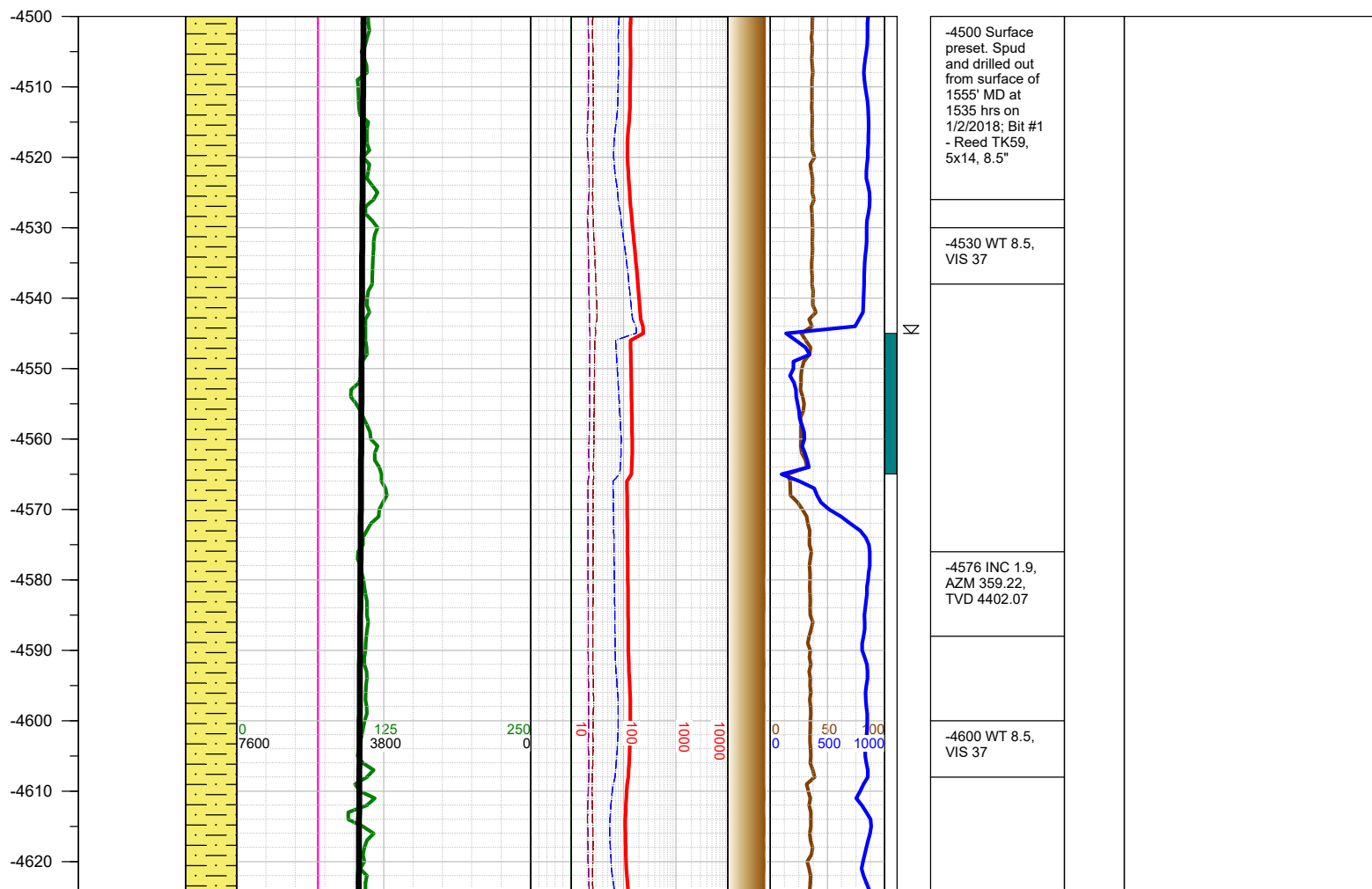
COUNTY: Weld
STATE: Colorado
GROUND ELEVATION: 5035'
KELLY BUSHING: 5060'
DRILLING FLUID: OBM
TVD VS. MD: 6206' / 9902'
SPUD DATE: January 2, 2018
TD DATE: January 3, 2018

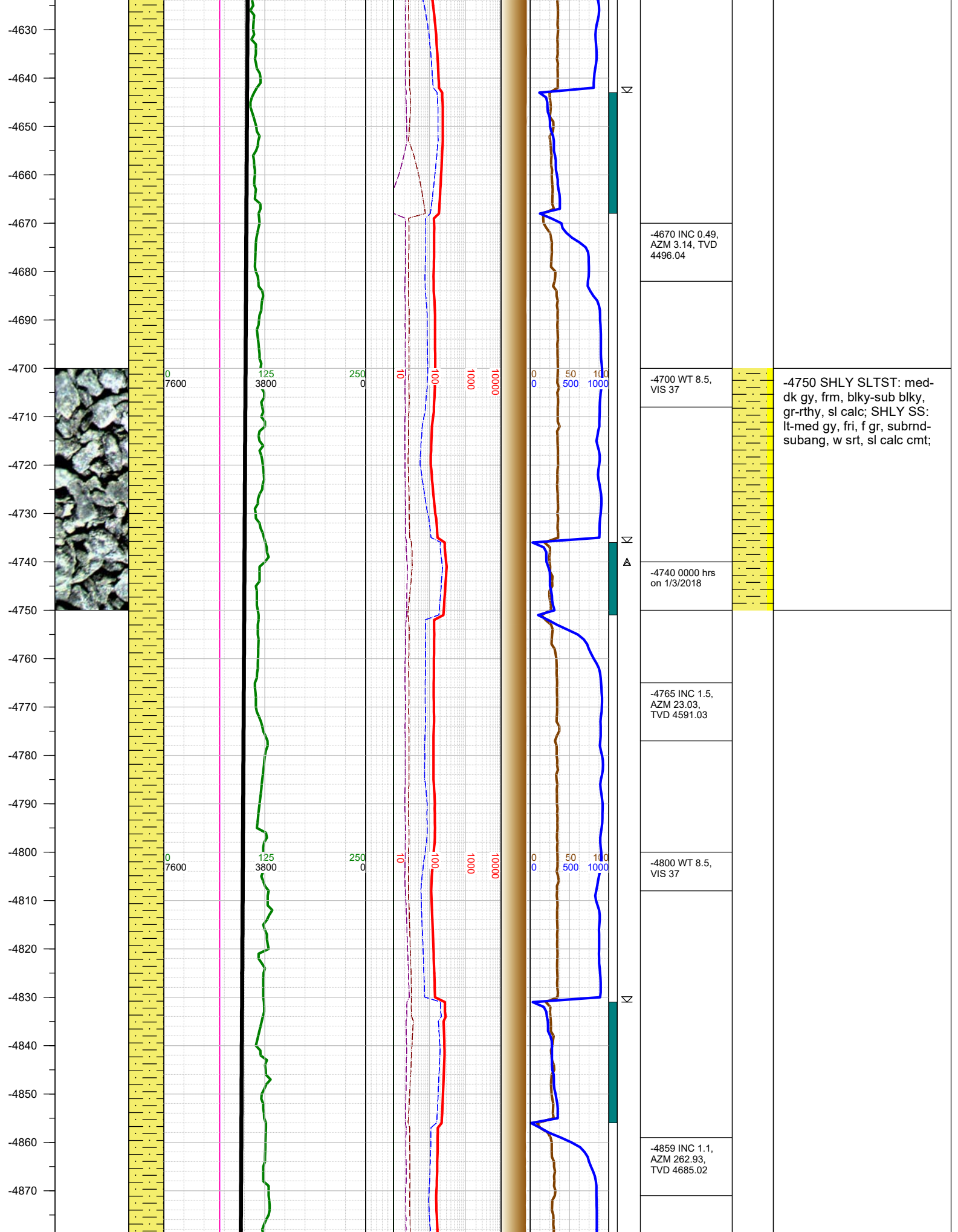
DEPTHS LOGGED: 4500' - 9902'
DATES LOGGED: January 2, 2018 - January 3, 2018
GEOLOGISTS: Brian Whitfield, Ross Apodaca
SCALE: 5" = 100'

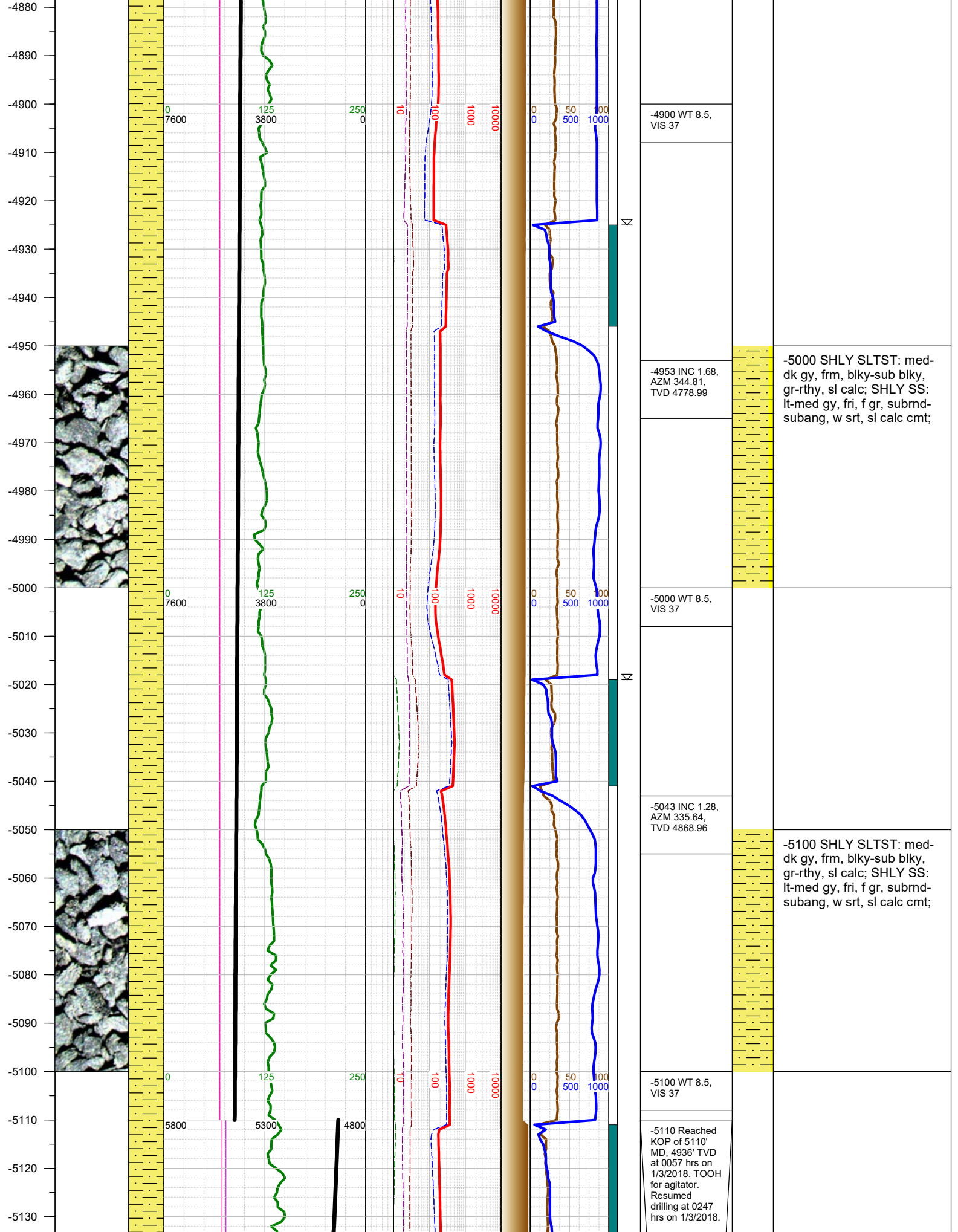
LEGEND

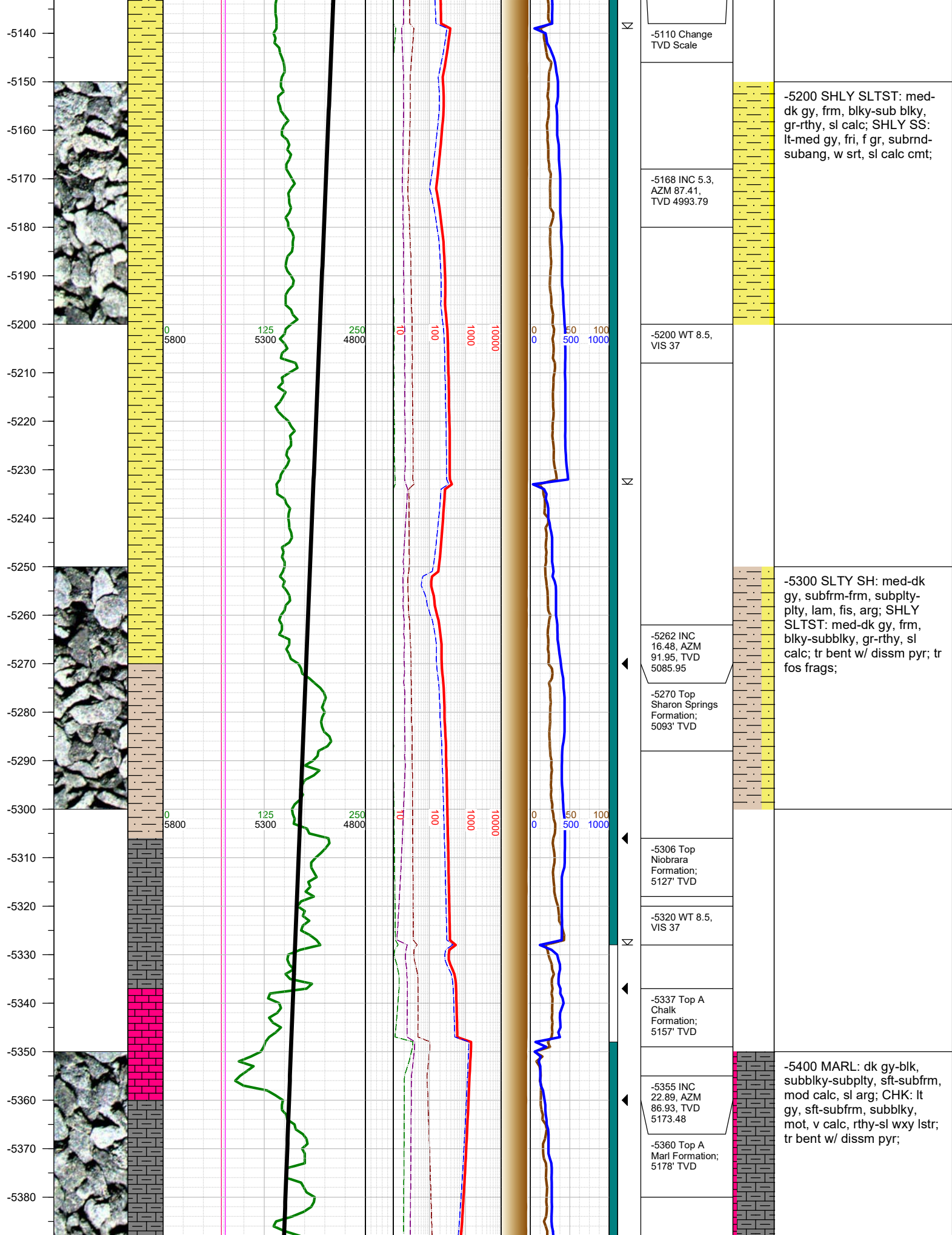


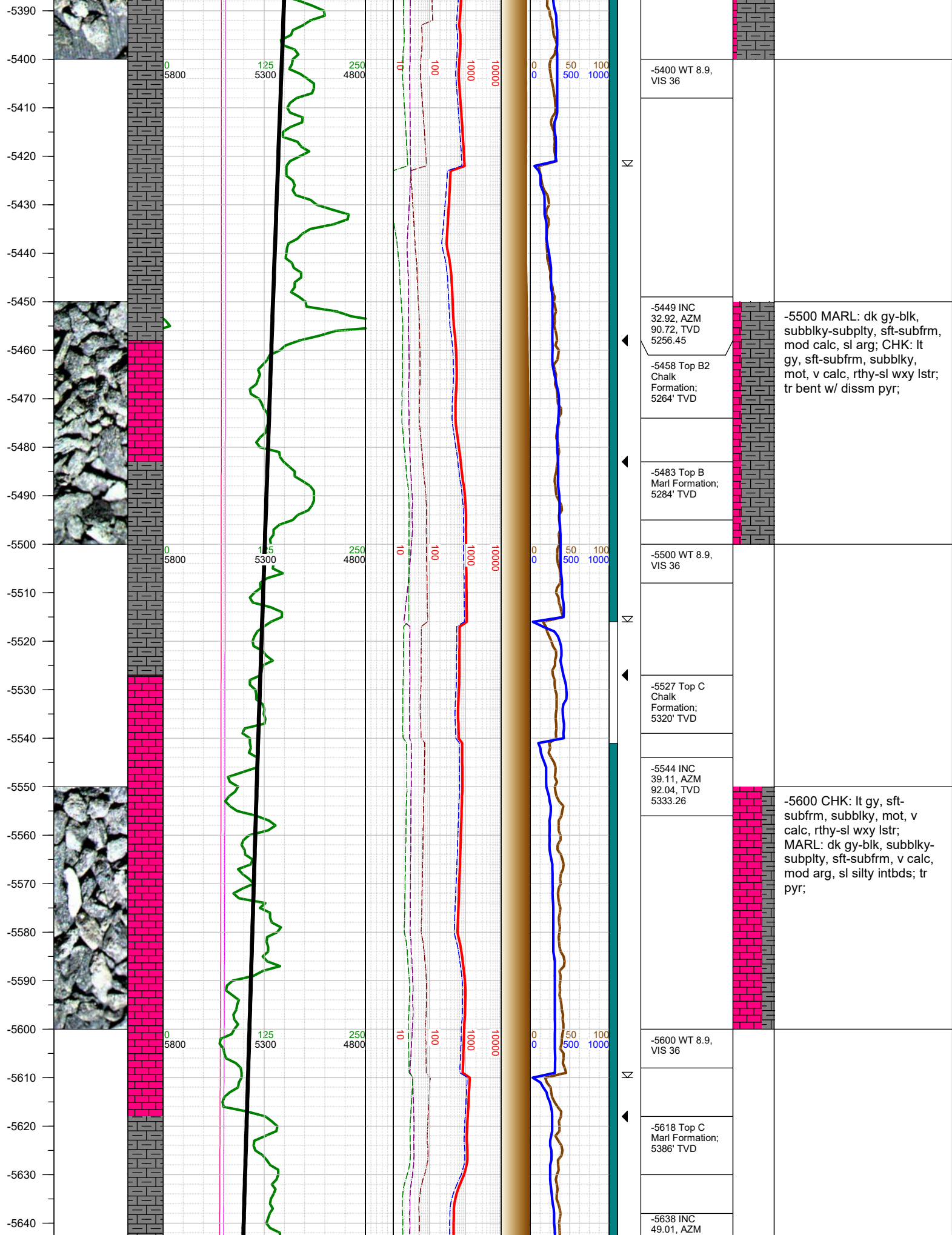
FORMATION CONNECTION MIDNIGHT NEW BIT GAS SHOW FAULT

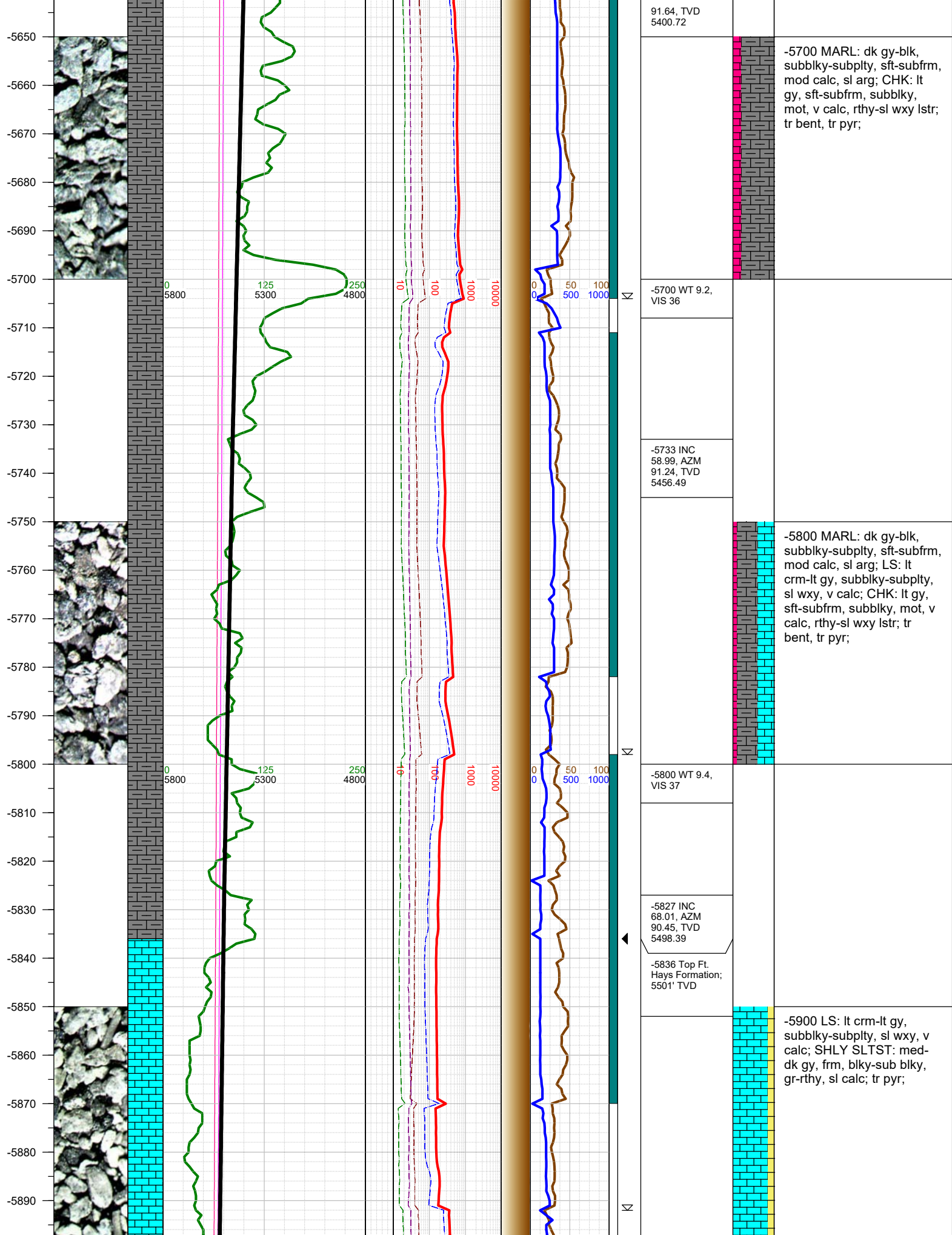


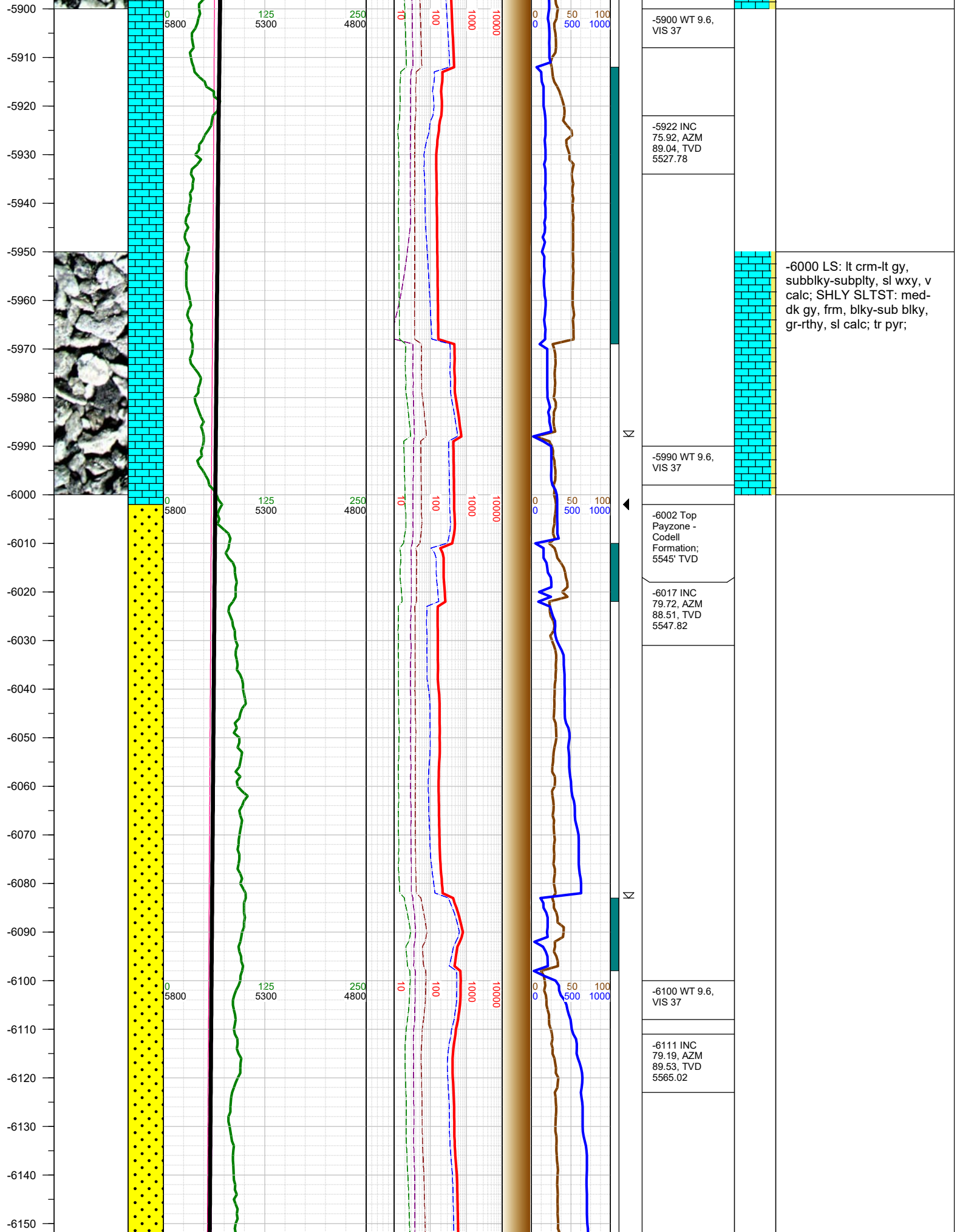


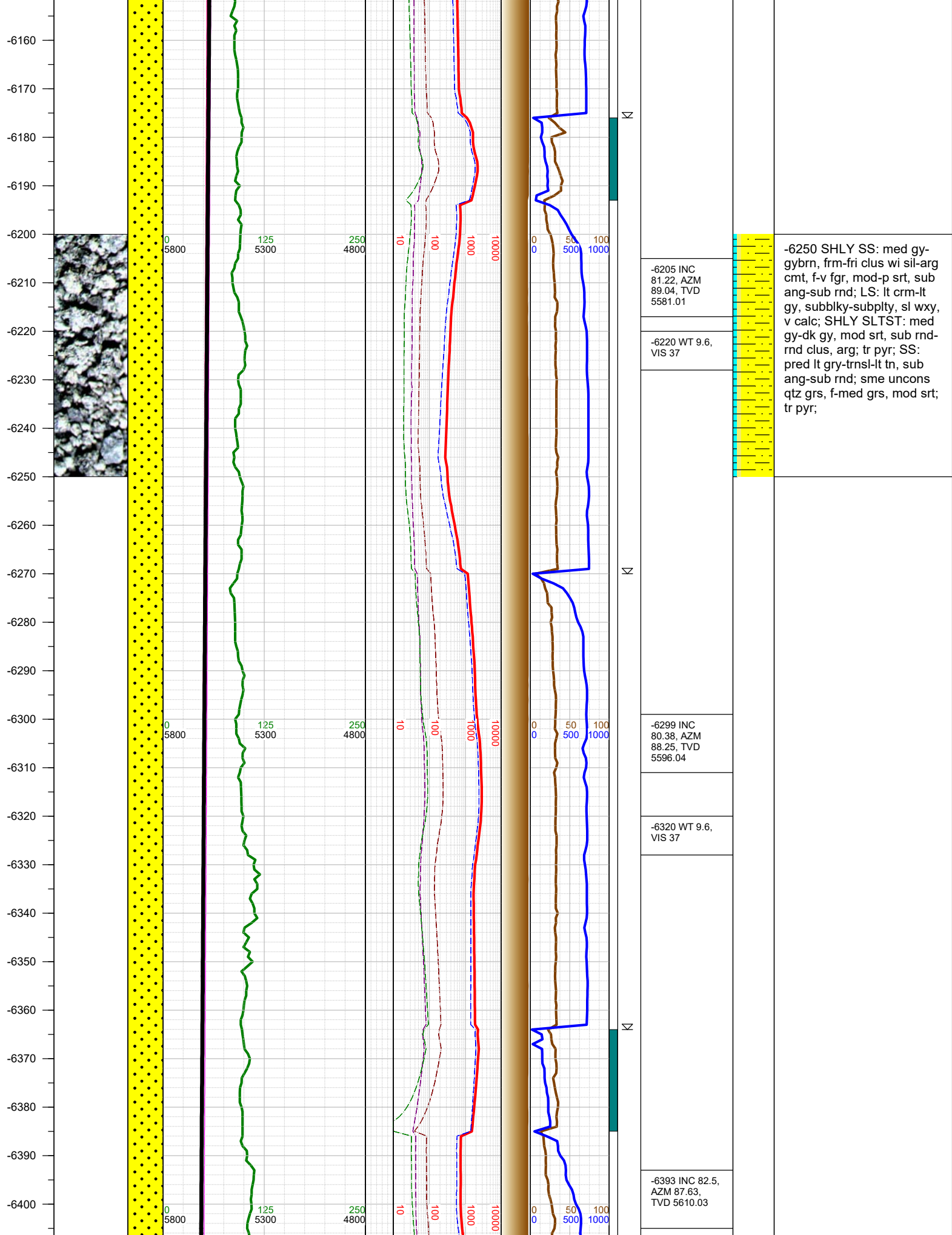




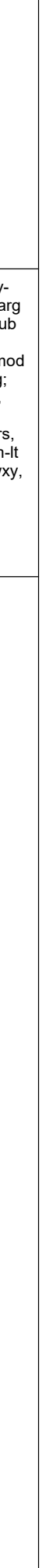
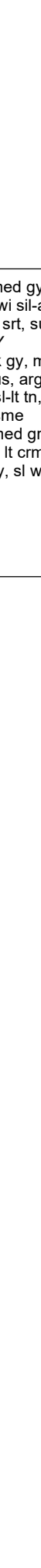
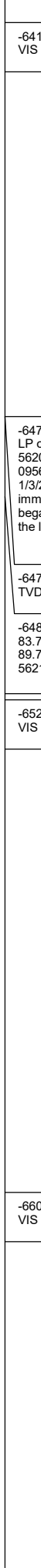
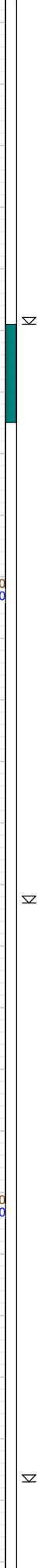
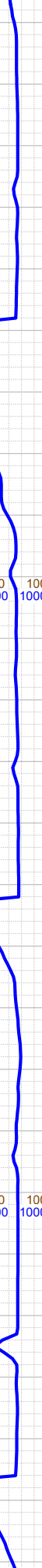
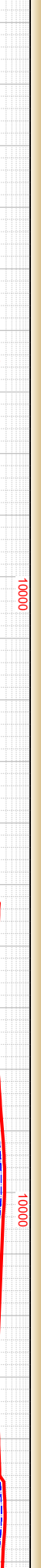
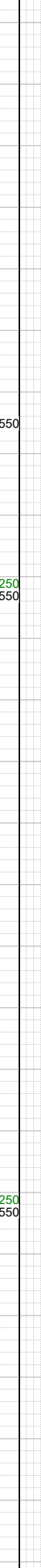
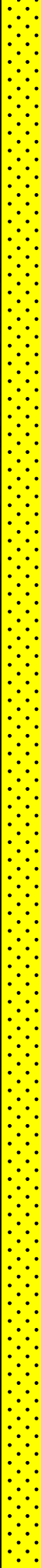
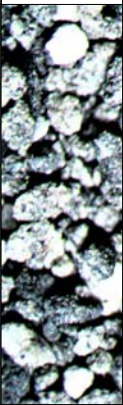








-6410
-6420
-6430
-6440
-6450
-6460
-6470
-6480
-6490
-6500
-6510
-6520
-6530
-6540
-6550
-6560
-6570
-6580
-6590
-6600
-6610
-6620
-6630
-6640
-6650
-6660



-6410 WT 9.6,
VIS 37

-6474 Reached
LP of 6474' MD,
5620' TVD at
0956 hrs on
1/3/2018 and
immediately
began drilling
the lateral.

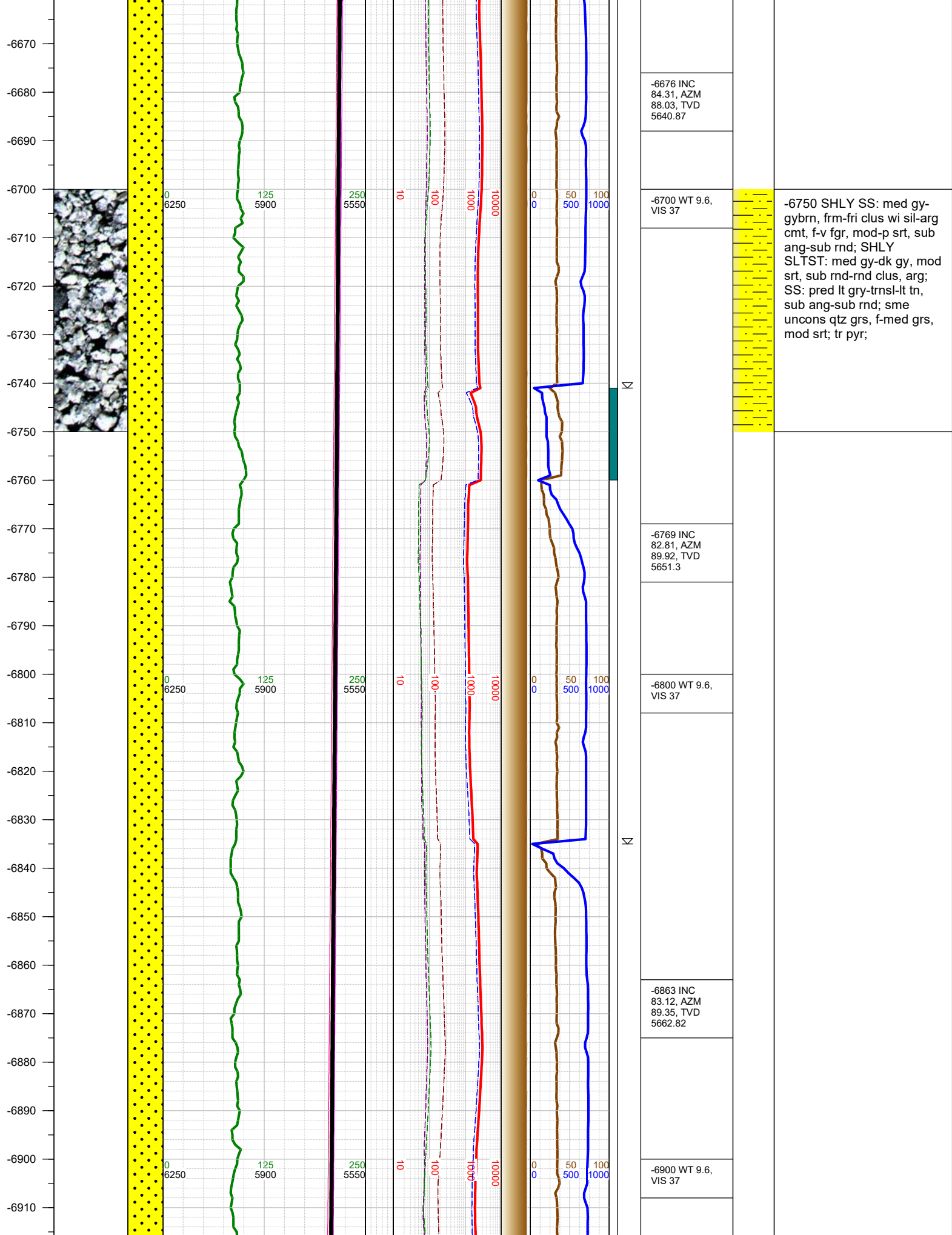
-6474 Change
TVD Scale

-6487 INC
83.78, AZM
89.75, TVD
5621.26

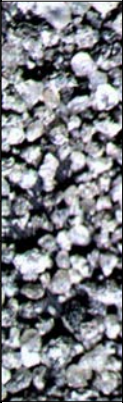
-6520 WT 9.6,
VIS 37

-6600 WT 9.6,
VIS 37

-6500 SHLY SS: med gy-
gybrn, frm-fri clus wi sil-arg
cmt, f-v fgr, mod-p srt, sub
ang-sub rnd; SHLY
SLTST: med gy-dk gy, mod
srt, sub rnd-rnd clus, arg;
SS: pred lt gry-trnsl-lt tn,
sub ang-sub rnd; sme
uncons qtz grs, f-med grs,
mod srt; tr pyr; LS: lt crm-lt
gy, subblky-subply, sl wxy,
v calc;



-6920
-6930
-6940
-6950
-6960
-6970
-6980
-6990
-7000
-7010
-7020
-7030
-7040
-7050
-7060
-7070
-7080
-7090
-7100
-7110
-7120
-7130
-7140
-7150
-7160
-7170



0
6250

125
5900

250
5550

10

100

1000

10000

0
0

50
500

100
1000

Σ

Σ

Σ

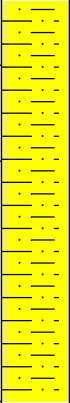
-6958 INC
83.52, AZM
88.73, TVD
5673.87

-7000 WT 9.6,
VIS 37

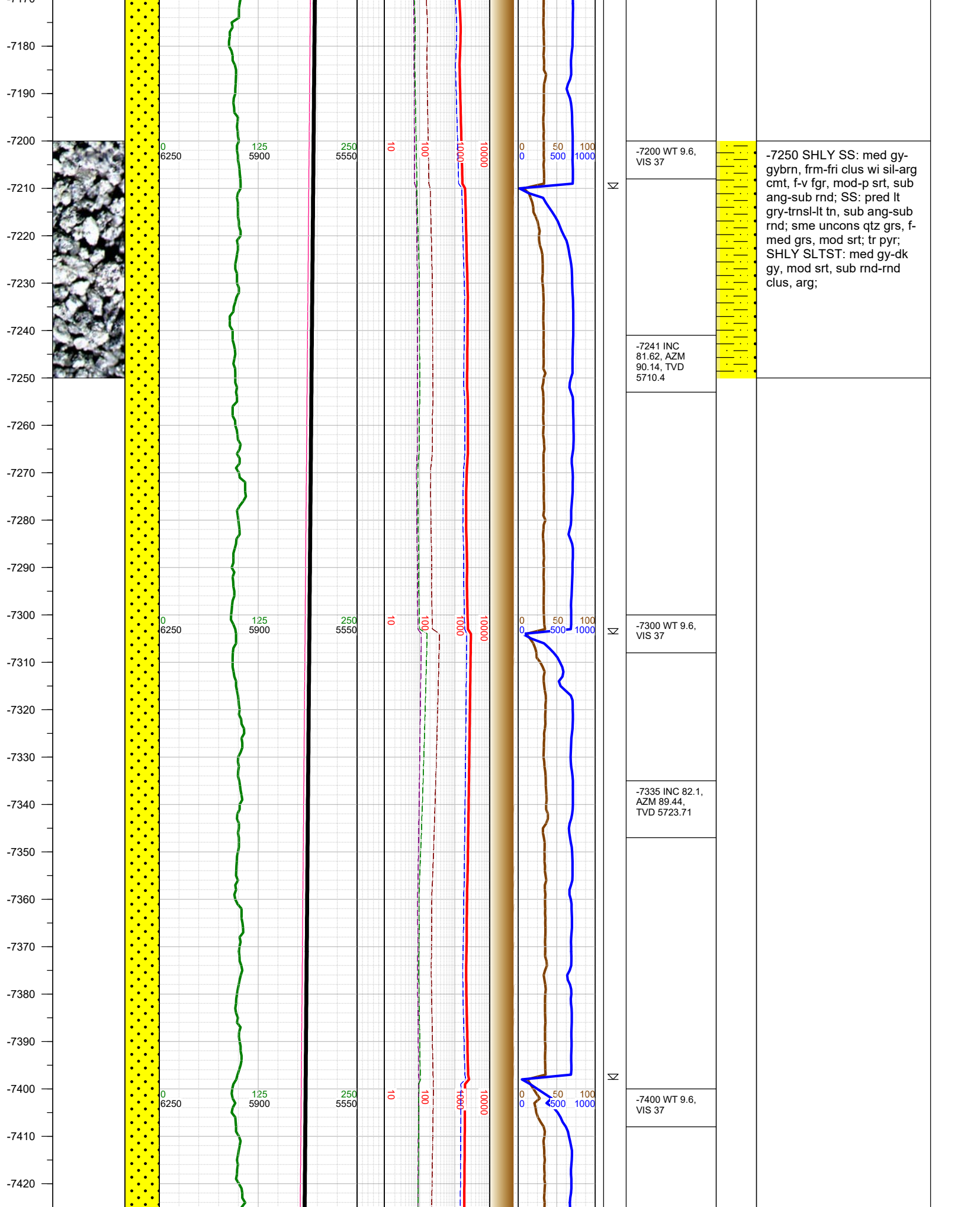
-7052 INC
83.69, AZM
87.94, TVD
5684.34

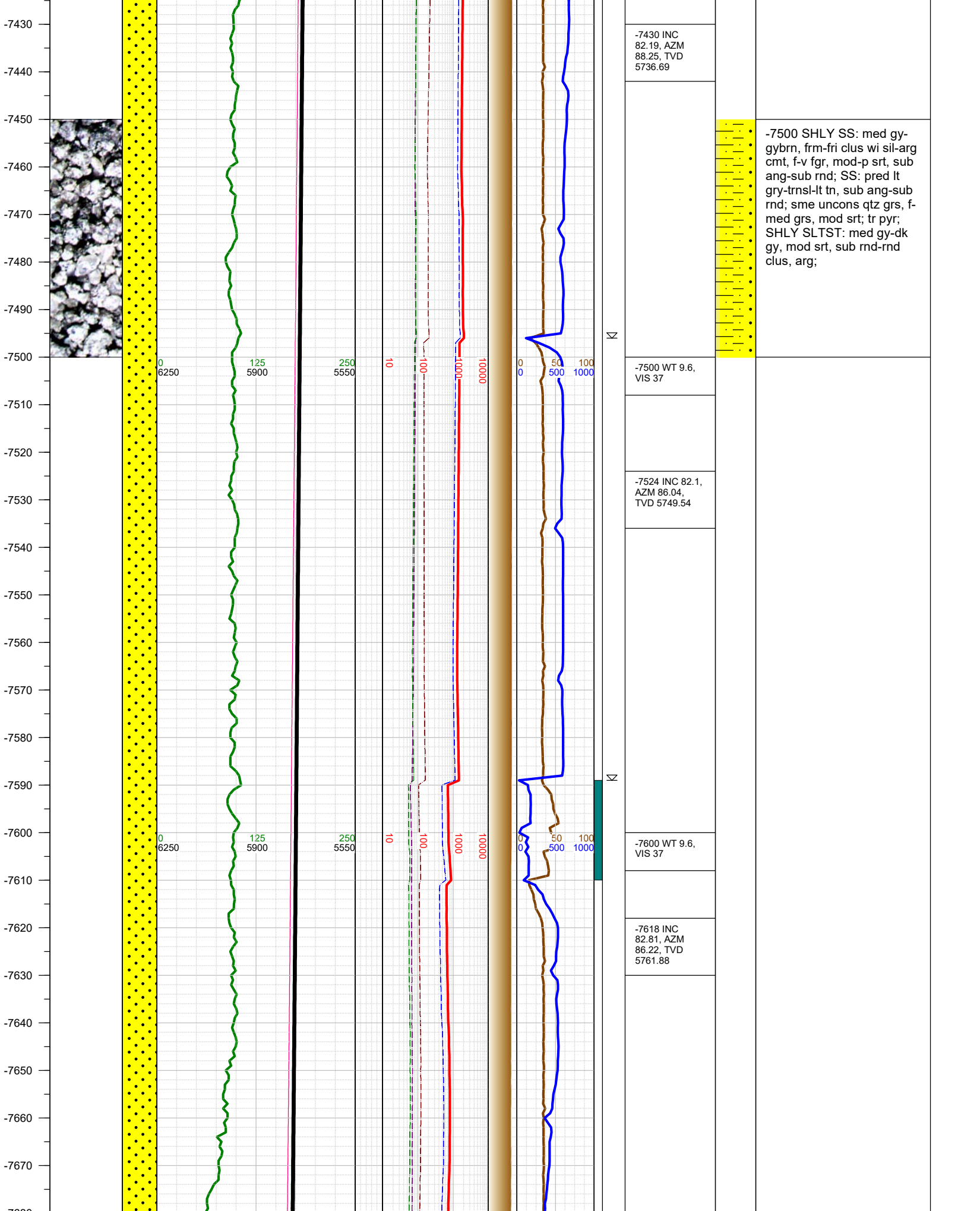
-7100 WT 9.6,
VIS 37

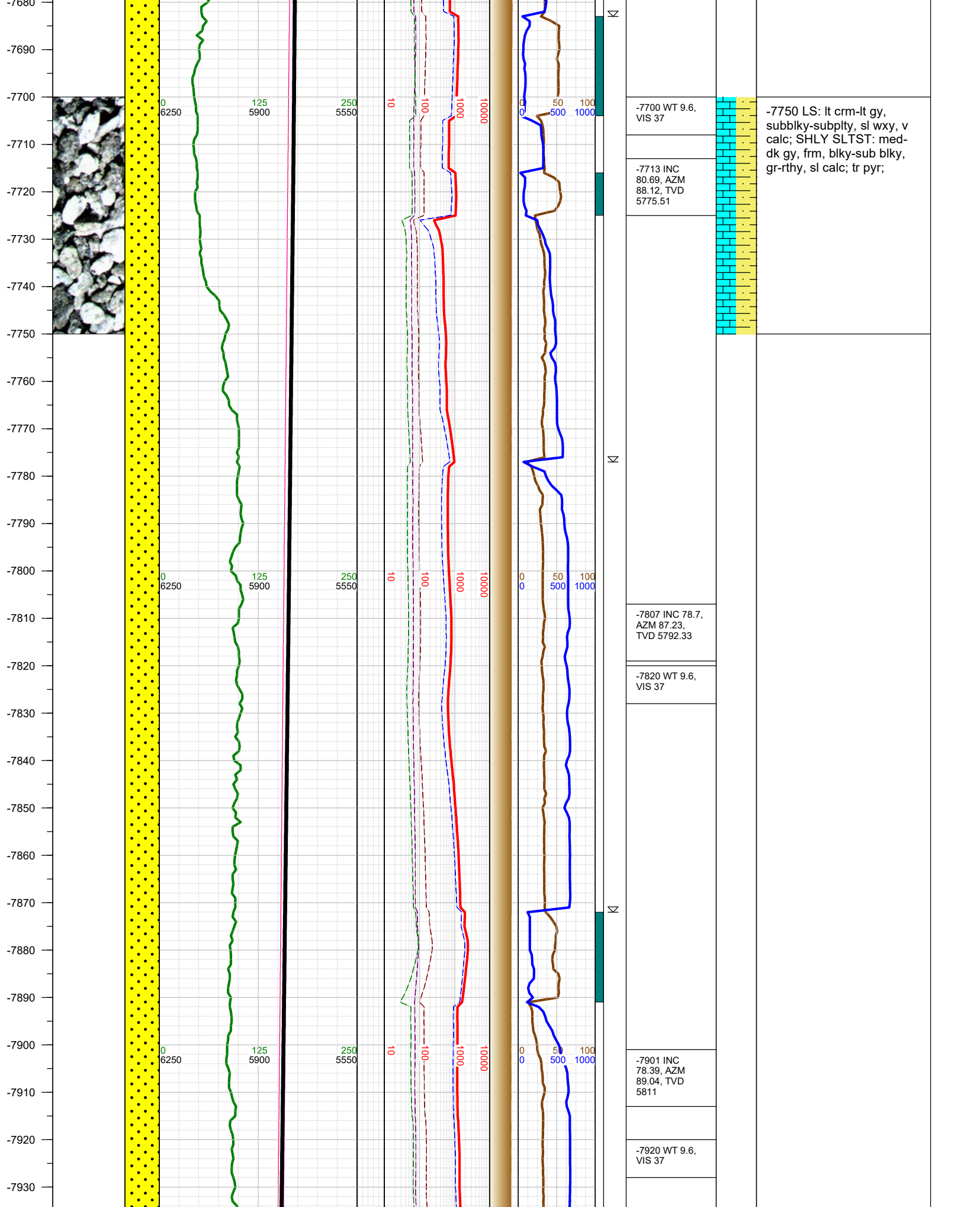
-7147 INC
81.49, AZM
90.14, TVD
5696.59

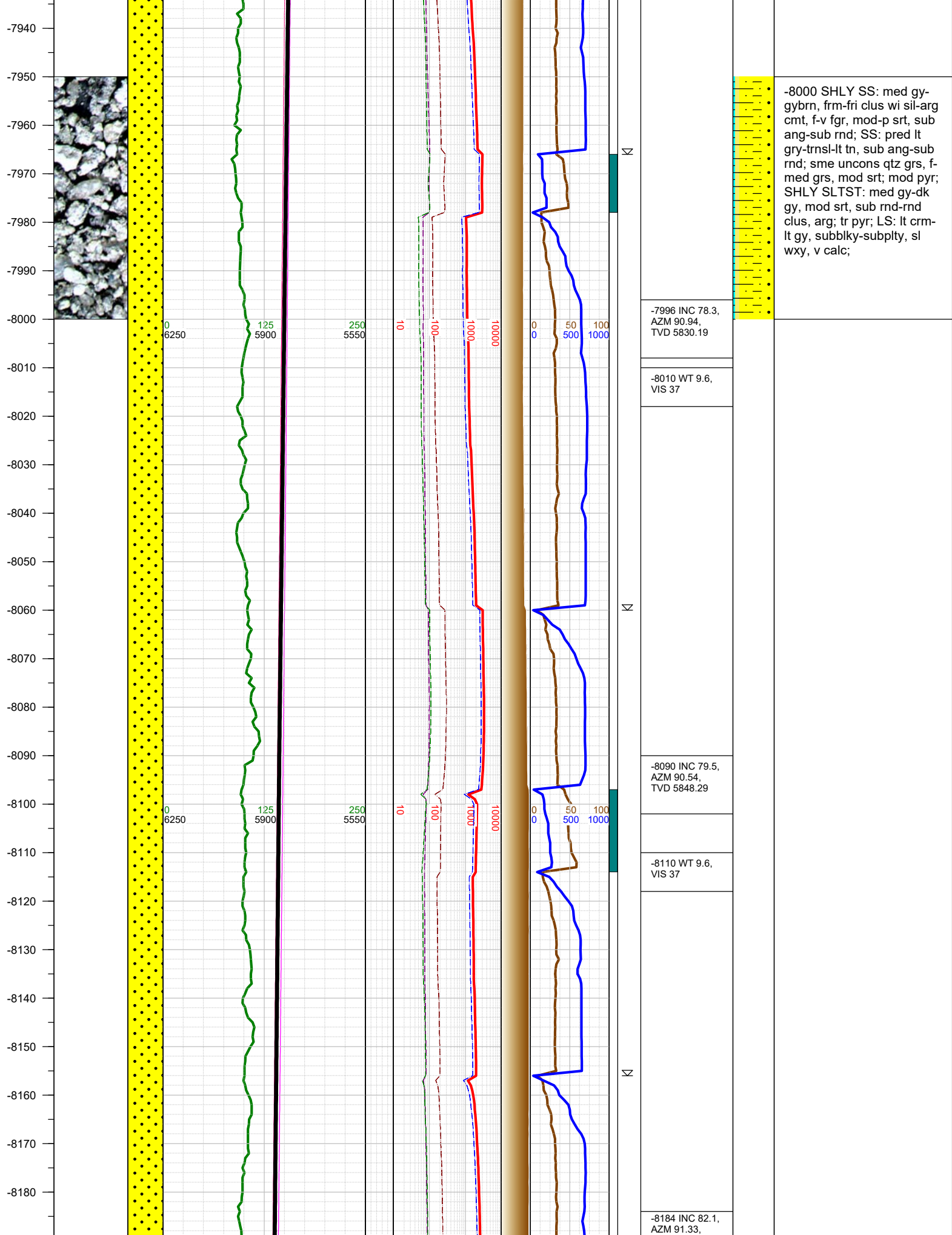


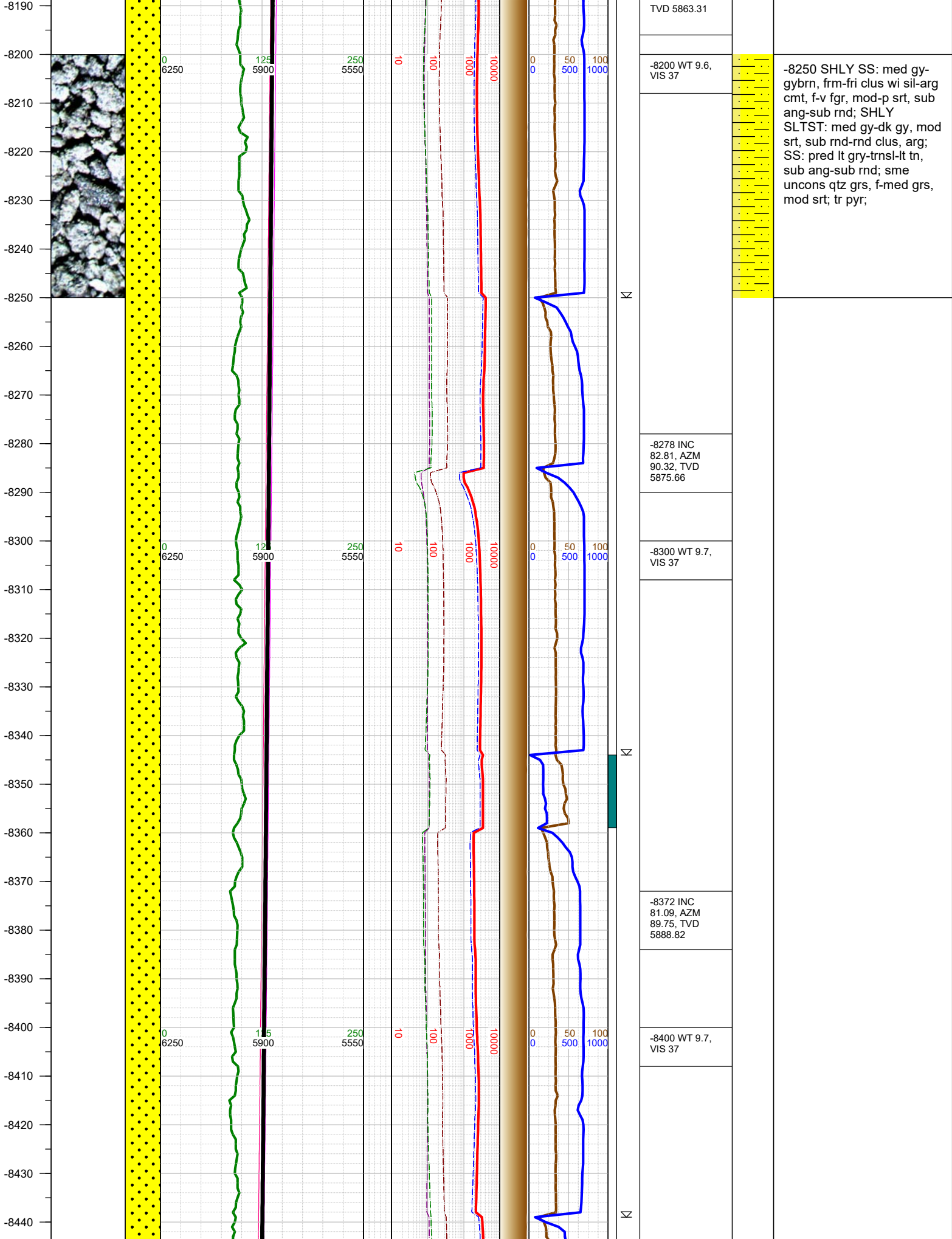
-7000 SHLY SS: med gy-
gybrn, frm-fri clus wi sil-arg
cmt, f-v fgr, mod-p srt, sub
ang-sub rnd; SS: pred lt
gry-trnsl-lt tn, sub ang-sub
rnd; sme uncons qtz grs, f-
med grs, mod srt; tr pyr;
SHLY SLTST: med gy-dk
gy, mod srt, sub rnd-rnd
clus, arg;

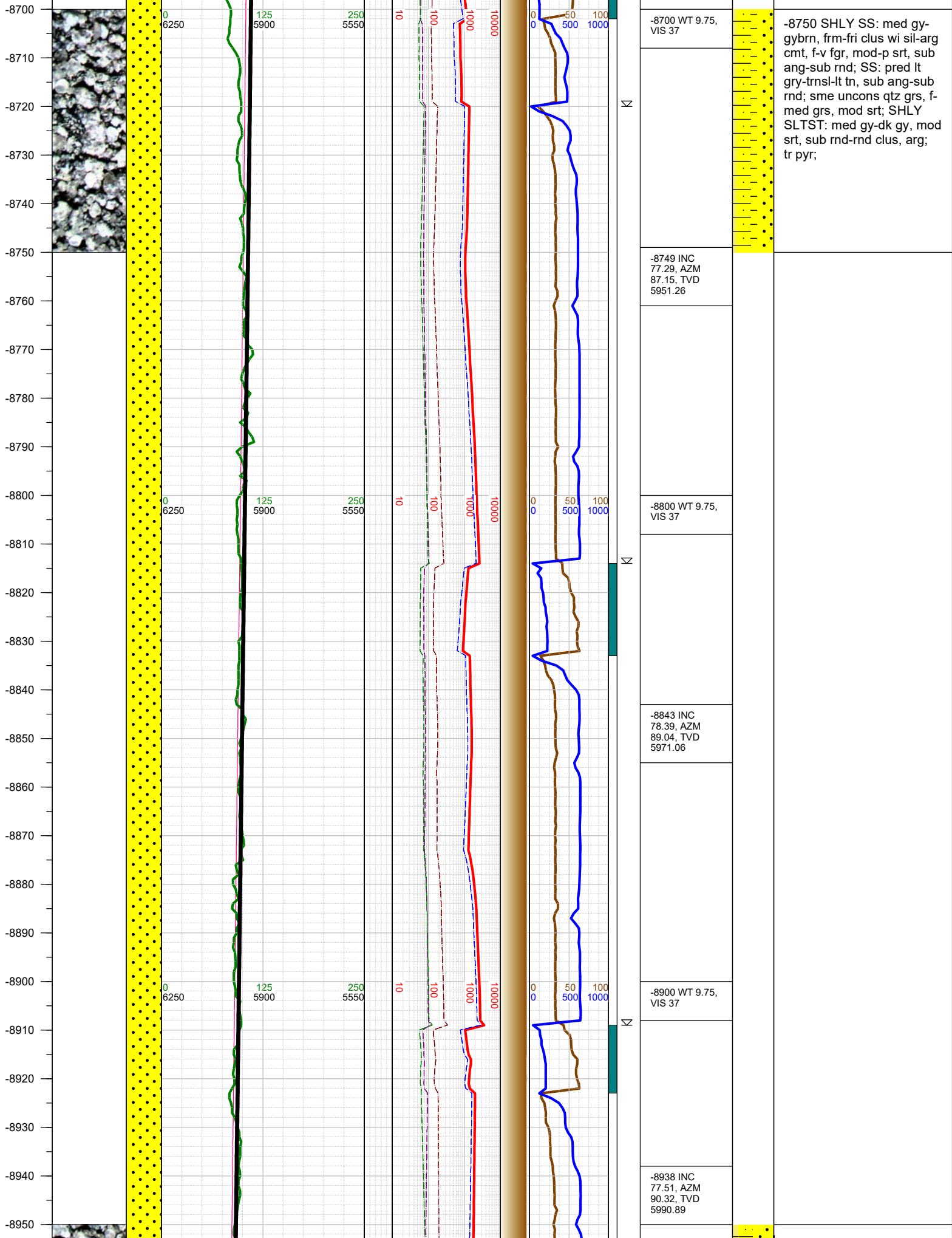


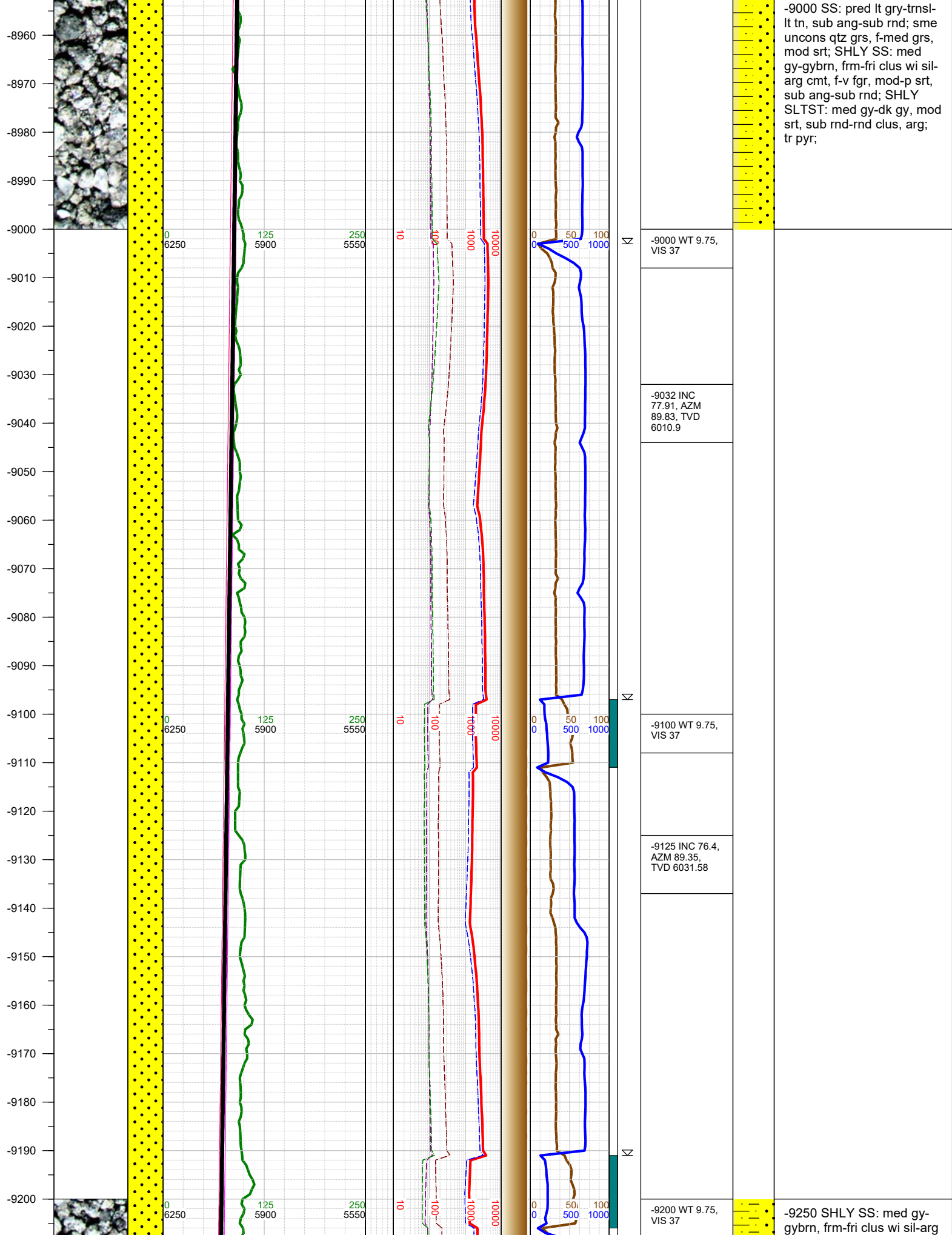


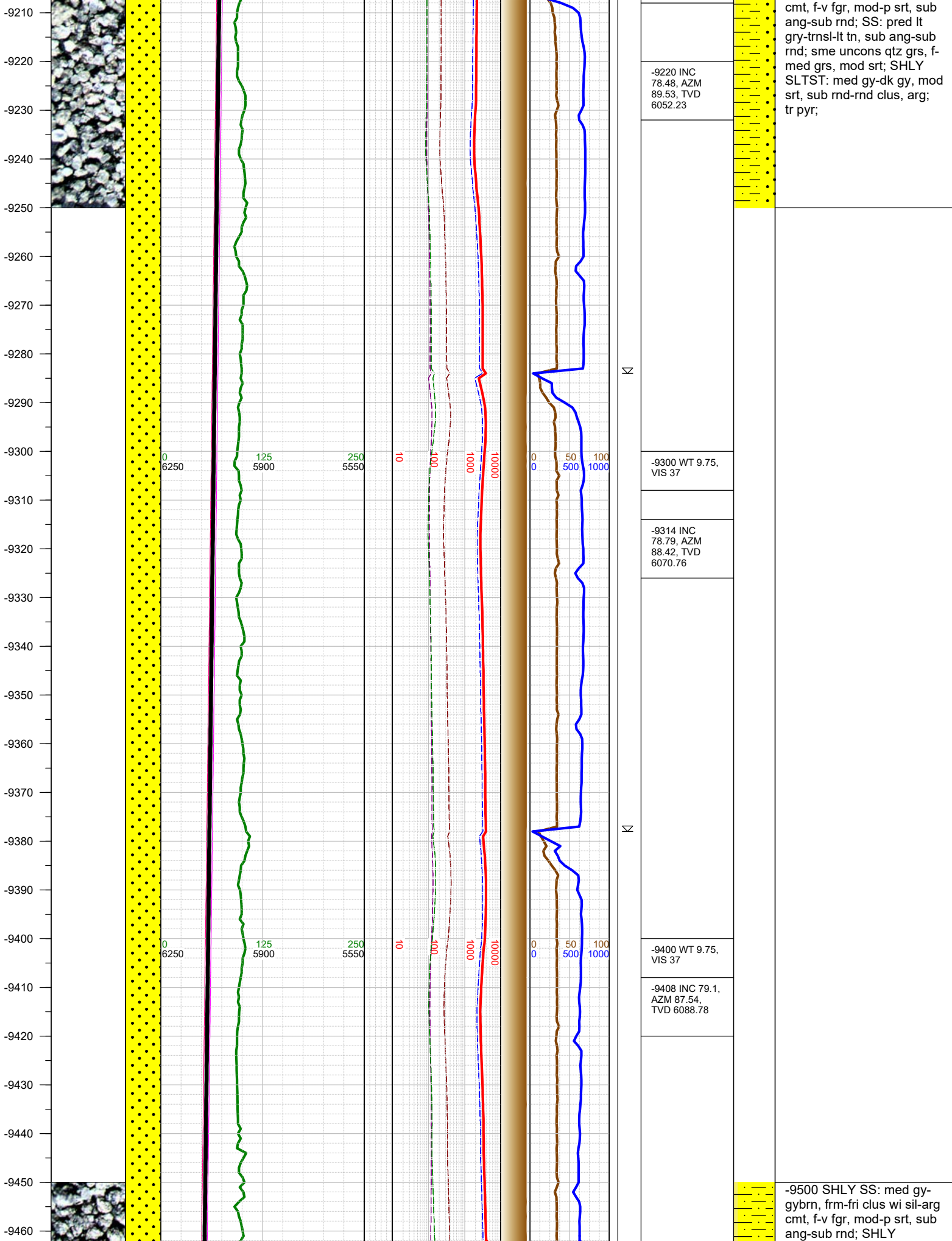






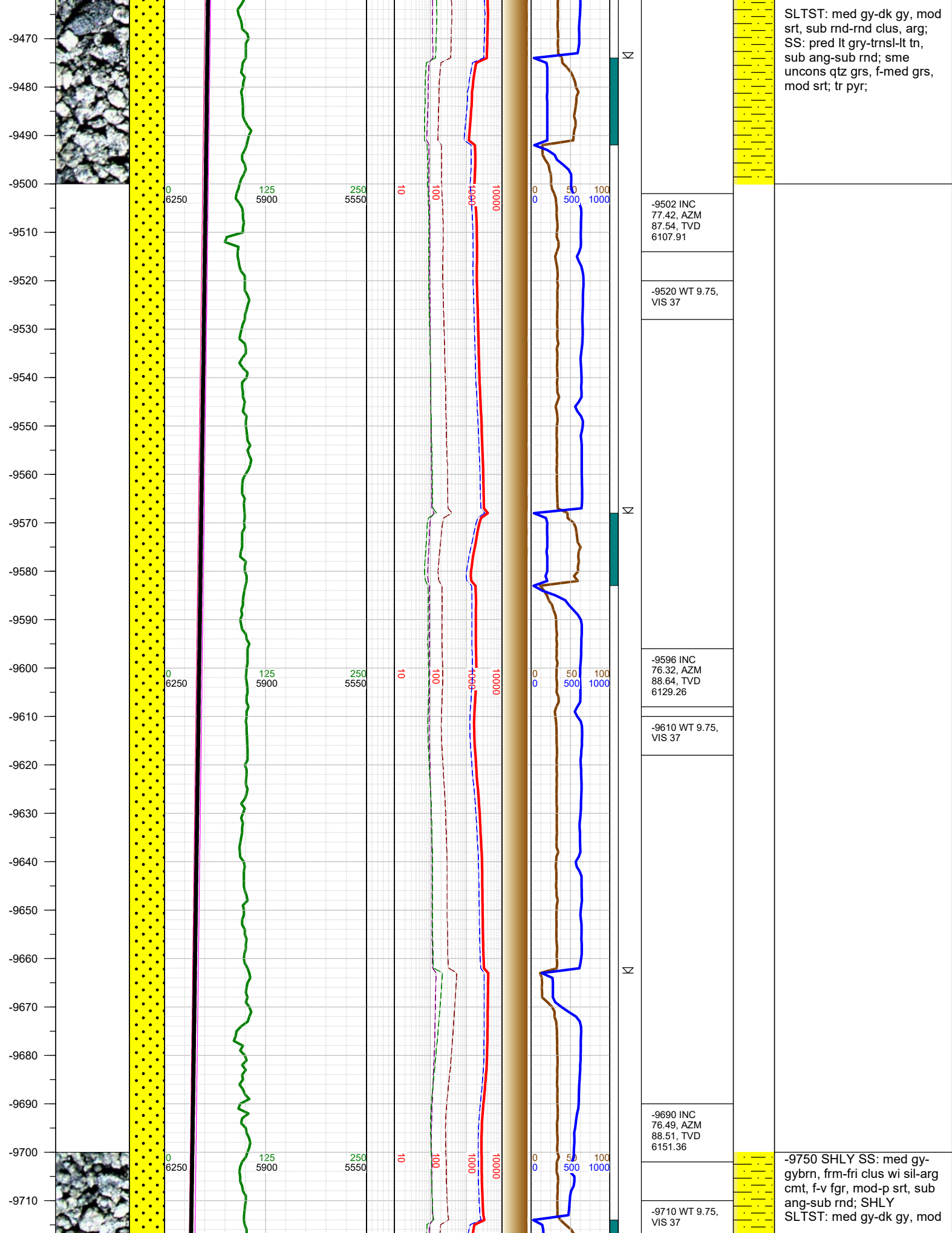


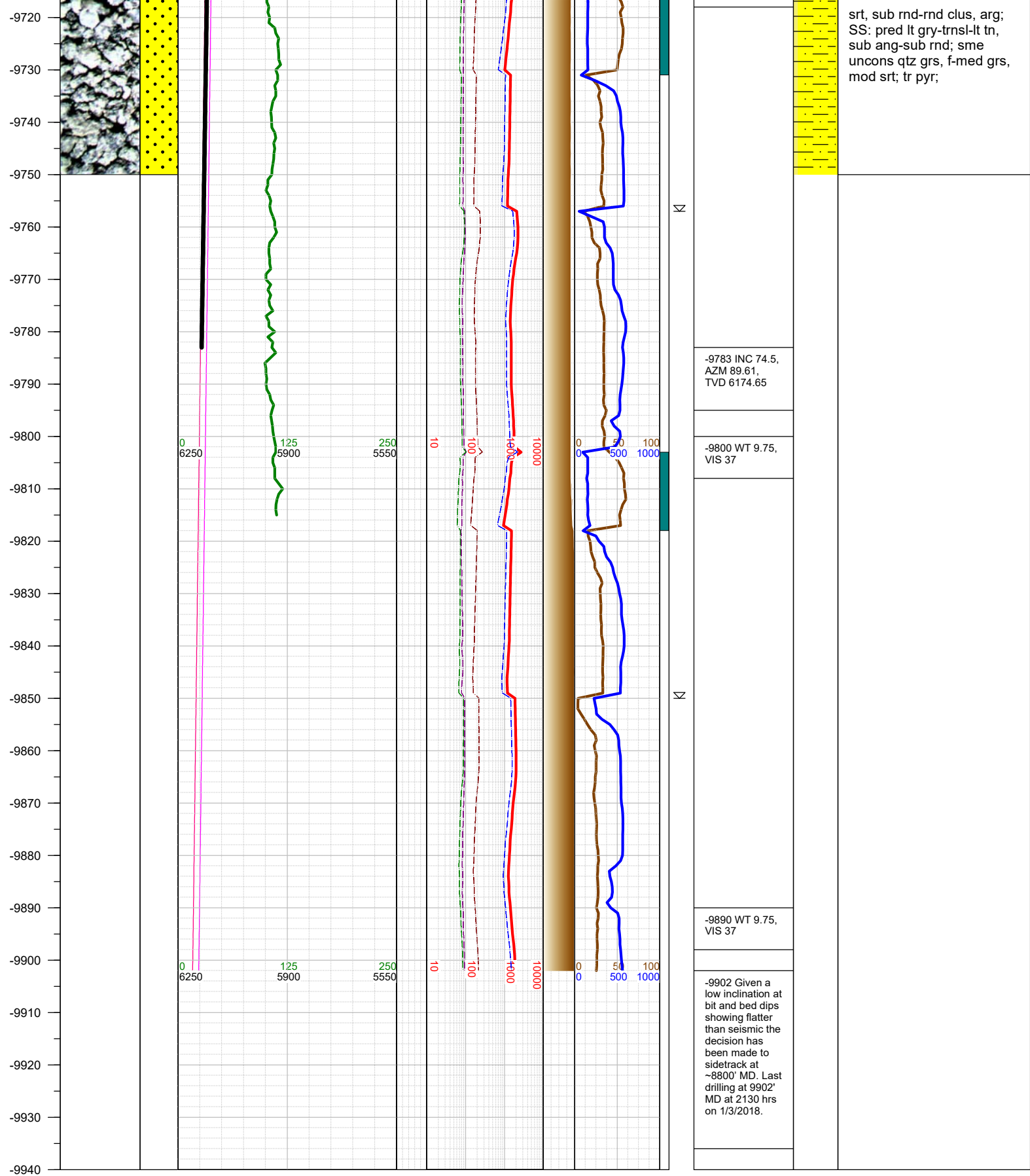




cmt, f-v fgr, mod-p srt, sub ang-sub rnd; SS: pred lt gry-trns-lt tn, sub ang-sub rnd; sme unconsl qtz grs, f-med grs, mod srt; SHLY SLTST: med gy-dk gy, mod srt, sub rnd-rnd clus, arg; tr pyr;

-9500 SHLY SS: med gy-gybrn, frm-fri clus wi sil-arg cmt, f-v fgr, mod-p srt, sub ang-sub rnd; SHLY





TOTAL DEPTH = 9902'

Thank you for using Earth Science Agency